



Overview of Cisco Host Upgrade Utility

This chapter contains the following topics:

- [About the Cisco Host Upgrade Utility](#) , page 1
- [License Agreement](#), page 4
- [Understanding the HUU User Interface](#), page 5

About the Cisco Host Upgrade Utility

The Cisco Host Upgrade Utility (hereafter referred to as HUU) is a tool that you can use to upgrade the firmware on a Cisco UCS C-Series server. HUU includes an option that enables you to download a container for a selected platform on a Windows operating system. You can download the container from the HUU ISO by burning the ISO on a physical media. When you insert the physical media into the server, auto-run launches an Index.html page in your browser. This index.html page provides access to the location from where you can download the container. You also can download the container from the ISO using the standard ISO extraction utilities.

HUU provides a user interface where you can choose the firmware components that need an upgrade. In the previous releases (1.4(x)), HUU provided a text menu from which you could choose the components and initiate the upgrade. From version 1.5(x) onwards, HUU provides a graphical user interface to accomplish this task.

You can upgrade the firmware on the following components using HUU:

- Cisco Integrated Management Controller (CIMC)
- System BIOS
- LAN on motherboard (LOM)
 - Intel Ethernet i350 PCI Server Dual and Quad Port Adapters
 - Intel X540 dual port LOM
 - Broadcom 5709 LOM
 - Broadcom 57711 LOM
 - Broadcom 57712 LOM

- RAID controllers
- Cisco UCS VIC P81E
- Cisco UCS VIC 1225
- Cisco UCS VIC 1225-T
- Cisco UCS VIC 1285
- Broadcom PCI adapters:
 - 5709 Dual and Quad port adapters
 - 57712 Dual port adapter
 - 57711 Dual port adapter
 - 57712 10 GBase-T
 - 57810 Dual port adapter
- Intel PCI adapters:
 - i350 Quad port adapter
 - X520 Dual port adapter
 - X540 Dual port adapter
 - 82576 Quad port
 - X520 10 GbE Dual port Fiber Server Bypass Adapter SR
- QLogic PCI adapters:
 - 2462 dual port adapter
 - 2562 dual port adapter
 - 2672 dual port adapter
 - 8152 dual port adapter
 - 8242 dual port adapter
 - 8362 dual port adapter
- Emulex PCI adapters:
 - LightPulse LPe11002 adapter
 - LightPulse LPe12002 adapter
 - LightPulse LPe16002 adapter
 - OneConnect[®] OCe11102 dual-port adapter
 - OneConnect[®] OCe10102 dual-port adapter
- LSI
 - LSI SAS2008

- LSI 8110-4i
- LSI MegaRAID SAS 9240-8i
- LSI MegaRAID SAS 9220-4i
- LSI MegaRAID SAS 9220-8i
- LSI MegaRAID SAS 9261-8i
- LSI MegaRAID SAS 9266-8i
- LSI MegaRAID SAS 9265-8i
- LSI MegaRAID SAS 9266CV-8i
- LSI MegaRAID SAS 9260-8i
- LSI MegaRAID SAS 9265CV-8i
- LSI MegaRAID SAS 9270CV-8i
- LSI MegaRAID SAS 9271CV-8i
- LSI MegaRAID SAS 9285CV-8e
- LSI MegaRAID SAS 9286CV-8e
- LSI Nytro
- LSI MegaRAID SAS 9361-8i

- Fusion-io
 - Fusion-io ioDrive2 1205M
 - Fusion-io ioDrive2 3000M
 - Fusion-io ioDrive2 365M
 - Fusion-io ioDrive2 785M

- Nvidia
 - Nvidia GRID K1
 - Nvidia GRID K2
 - Nvidia TESLA K10
 - Nvidia TESLA K20
 - Nvidia TESLA K20x
 - Nvidia TESLA K40m

- Hard Disk Drives
 - ST9300653SS
 - ST9146853SS
 - ST1000NM0001

- ST2000NM000
- ST500NM0011
- AL13SEB300
- AL13SEB600
- AL13SEB900

**Note**

- This is the list of all the components supported by various servers. While upgrading firmware for a particular server, HUU discovers and displays only the components supported by that server.
- **Important:** You cannot upgrade the firmware on low level board components such as, FPGA, CPLD, power sequencer and PSUs. For steps to upgrade firmware on these components, see section *Updating Firmware on Server Components* in the *Cisco UCS C-Series Servers Integrated Management Controller CLI Configuration Guide, Release 1.5* at the following location: http://www.cisco.com/en/US/products/ps10739/products_installation_and_configuration_guides_list.html

For updated information on the components supported by various servers, see the *Release Notes for Cisco UCS C-Series Software, Release 1.5(x)* available at the following location:

http://www.cisco.com/en/US/products/ps10739/prod_release_notes_list.html

For information about upgrading the firmware on C-Series servers using non-interactive HUU, see the *Cisco UCS Rack-Mount Servers CIMC XML API Programmer's Guide* available at the following location:

http://www.cisco.com/en/US/docs/unified_computing/ucs/c/sw/api/b_cimc_api_book.html

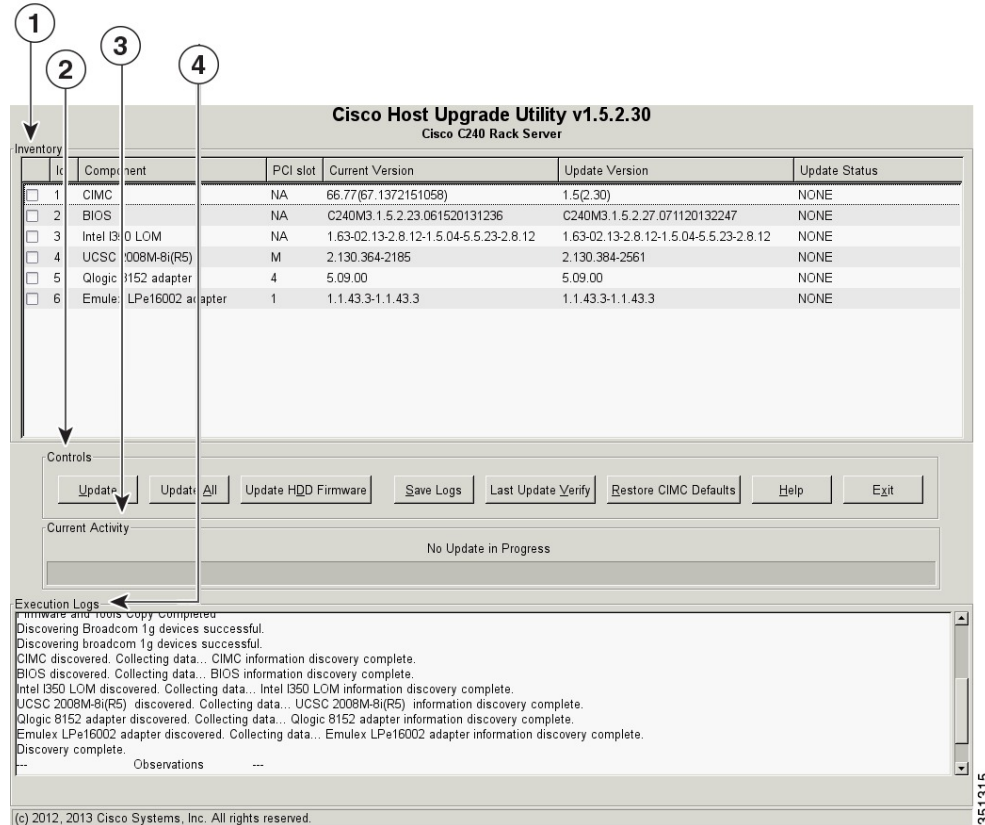
License Agreement

After the HUU boots, the first interface that appears is the End User License Agreement. Choose **I Agree** to agree to this license.

Understanding the HUU User Interface

This section provides a brief introduction to the UI elements in the various sections of the HUU user interface.

Figure 1: HUU User Interface



| UI element | Description |
|-----------------------------|---|
| 1. Inventory section | |
| Id | Displays the serial number of the rows of the components. |
| Component | Displays the list of components of a server. |
| PCI Slot | Display the PCI slot information for the PCI adapter components. |
| Current Version | Displays the current version of the firmware for each of the listed components. |
| Update Version | Displays the version of the firmware that is available for upgrade. |

| UI element | Description |
|---------------------------------------|---|
| Update Status | Displays the status of the update for each element in the list while an update is in progress. |
| 2. Controls section | |
| Update | This button is used to initiate the firmware update for the selected components. |
| Update All | This button is used to initiate the firmware update of all the available components for a server. |
| Update HDD Firmware | This button is used to initiate firmware update on specific hard drives that support new firmware. |
| Save Logs | This button is used to save the log files that contain a detailed status of the update to an external USB device connected to the server physically or through the KVM vMedia. When an error occurs during an update, you are prompted to save the logs. The Save Logs feature is useful for troubleshooting. |
| Last Update Verify | This button is used to compare the previously updated firmware version for each component that was updated using the HUU with the current version of the firmware on the components. |
| Restore CIMC Defaults | This button is used to restore the CIMC settings to factory defaults. |
| 3. Current Activity section | This section indicates the status of an update. |
| 4. Execution Logs section | This section provides a detailed log of the various activities and their status while an update is in progress. |