



Overview

This chapter includes the following sections:

- [Overview of the Cisco UCS C-Series Rack-Mount Servers, page 1](#)
- [Overview of the Server Software, page 2](#)
- [Cisco Integrated Management Controller, page 2](#)
- [Overview of the Cisco IMC User Interface, page 3](#)

Overview of the Cisco UCS C-Series Rack-Mount Servers

The Cisco UCS C-Series rack-mount servers include the following models:

- Cisco UCS C200 Rack-Mount Server
- Cisco UCS C210 Rack-Mount Server
- Cisco UCS C220 Rack-Mount Server
- Cisco UCS C240 Rack-Mount Server
- Cisco UCS C250 Rack-Mount Server
- Cisco UCS C260 Rack-Mount Server
- Cisco UCS C460 Rack-Mount Server
- Cisco UCS C420 Rack-Mount Server



Note

To determine which Cisco UCS C-Series rack-mount servers are supported by this firmware release, see the associated *Release Notes*. The C-Series release notes are available at the following URL: http://www.cisco.com/en/US/products/ps10739/prod_release_notes_list.html

Overview of the Server Software

The Cisco UCS C-Series Rack-Mount Server ships with the Cisco IMC firmware.

Cisco IMC Firmware

Cisco IMC is a separate management module built into the motherboard. A dedicated ARM-based processor, separate from the main server CPU, runs the Cisco IMC firmware. The system ships with a running version of the Cisco IMC firmware. You can update the Cisco IMC firmware, but no initial installation is needed.

Server OS

The Cisco UCS C-Series rack servers support operating systems such as Windows, Linux, Oracle and so on. For more information on supported operating systems, see the *Hardware and Software Interoperability for Standalone C-series servers* at http://www.cisco.com/en/US/products/ps10477/prod_technical_reference_list.html. You can use Cisco IMC to install an OS on the server using the KVM console and vMedia.



Note You can access the available OS installation documentation from the *Cisco UCS C-Series Servers Documentation Roadmap* at <http://www.cisco.com/go/unifiedcomputing/c-series-doc>.

Cisco Integrated Management Controller

The Cisco IMC is the management service for the C-Series servers. Cisco IMC runs within the server.



Note The Cisco IMC management service is used only when the server is operating in Standalone Mode. If your C-Series server is integrated into a UCS system, you must manage it using UCS Manager. For information about using UCS Manager, see the configuration guides listed in the *Cisco UCS B-Series Servers Documentation Roadmap* at <http://www.cisco.com/go/unifiedcomputing/b-series-doc>.

Management Interfaces

You can use a web-based GUI or SSH-based CLI or an XML-based API to access, configure, administer, and monitor the server. Almost all tasks can be performed in either interface, and the results of tasks performed in one interface are displayed in another. However, you cannot do the following:

- Use Cisco IMC GUI to invoke Cisco IMC CLI
- View a command that has been invoked through Cisco IMC CLI in Cisco IMC GUI
- Generate Cisco IMC CLI output from Cisco IMC GUI

Tasks You Can Perform in Cisco IMC

You can use Cisco IMC to perform the following server management tasks:

- Power on, power off, power cycle, reset and shut down the server

- Toggle the locator LED
- Configure the server boot order
- View server properties and sensors
- Manage remote presence
- Create and manage local user accounts, and enable remote user authentication through Active Directory
- Configure network-related settings, including NIC properties, IPv4, VLANs, and network security
- Configure communication services, including HTTP, SSH, and IPMI Over LAN
- Manage certificates
- Configure platform event filters
- Update Cisco IMC firmware
- Monitor faults, alarms, and server status

No Operating System or Application Provisioning or Management

Cisco IMC provisions servers, and as a result, exists below the operating system on a server. Therefore, you cannot use it to provision or manage operating systems or applications on servers. For example, you cannot do the following:

- Deploy an OS, such as Windows or Linux
- Deploy patches for software, such as an OS or an application
- Install base software components, such as anti-virus software, monitoring agents, or backup clients
- Install software applications, such as databases, application server software, or web servers
- Perform operator actions, including restarting an Oracle database, restarting printer queues, or handling non-Cisco IMC user accounts
- Configure or manage external storage on the SAN or NAS storage

Overview of the Cisco IMC User Interface

The Cisco IMC user interface is a web-based management interface for Cisco C-Series servers. You can launch the Cisco IMC user interface and manage the server from any remote host that meets the following minimum requirements:

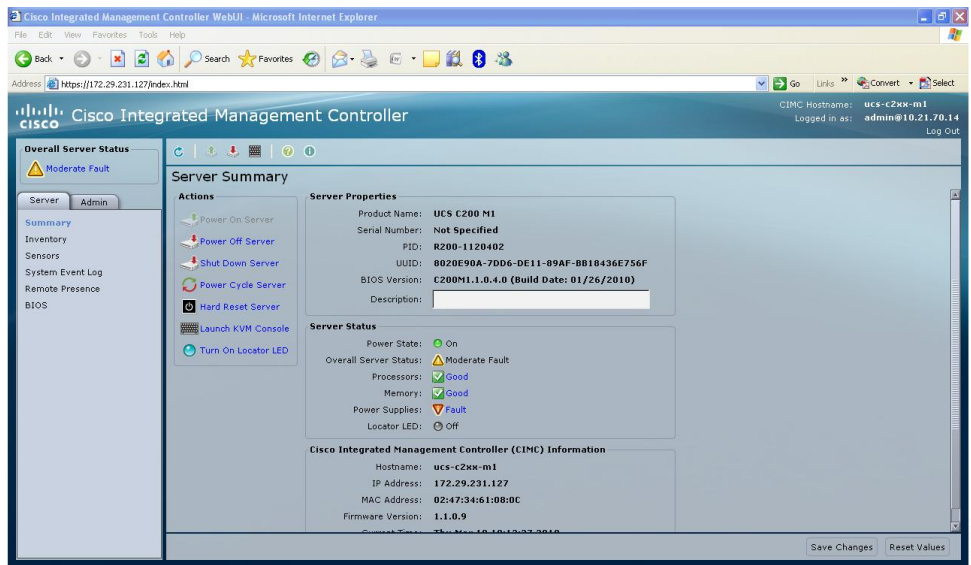
- Java 1.6 or later
- HTTP and HTTPS enabled
- Adobe Flash Player 10 or later

**Note**

In case you lose or forget the password that you use to log in to Cisco IMC, see the password recovery instructions in the Cisco UCS C-Series server installation and service guide for your server. This guide is available from the *Cisco UCS C-Series Servers Documentation Roadmap* at <http://www.cisco.com/go/unifiedcomputing/c-series-doc>.

Cisco IMC Home Page

When you first log into Cisco IMC GUI, the user interface looks similar to the following illustration:



Navigation and Work Panes

The **Navigation** pane displays on the left side of the Cisco IMC GUI. Clicking links on the **Server**, **Admin**, or **Storage** tabs in the **Navigation** pane displays the associated tabs in the **Work** pane on the right.

The **Navigation** pane has the following areas:

- **Overall Server Status** area
- **Server** tab
- **Admin** tab
- **Storage** tab

Overall Server Status Area

The **Overall Server Status** area is above the **Server**, **Admin**, and **Storage** tabs. Click the link in area to refresh the **Server Summary** tab in the **Work** pane.

**Note**

If a different tab is displayed in the **Work** pane, clicking this link redisplay the **Server Summary** tab with updated server information.

Server Tab

Each node in the **Server** tab leads to one or more tabs that display in the **Work** pane. These tabs provides access to the following information:

Server Tab Node Name	Work Pane Tabs Provide Information About...
Summary	Server properties, status, BIOS version, Cisco IMC firmware version, IP address, and MAC address.
Inventory	Installed CPUs, memory cards, power supplies, PCI adapters, Cisco VIC adapters, network adapters, and storage adapters.
Sensors	Power supply, fan, temperature, voltage, current, LEDs, and storage sensor readings.
Remote Presence	KVM, virtual media, and Serial over LAN settings.
BIOS	The installed BIOS firmware version and the server boot order.
Power Policies	Power policy settings.
Faults and Logs	Fault summary, fault history, system event log, Cisco IMC logs, and logging controls.
Troubleshooting	Bootstrap process recording, crash recording, and player.

Admin Tab

Each node in the **Admin** tab leads to one or more tabs that display in the **Work** pane. These tabs provides access to the following information:

Admin Tab Node Name	Work Pane Tabs Provide Information About...
User Management	Locally-defined user accounts, Active Directory settings, and current user session information.
Network	NIC, IPv4, VLAN, and LOM properties, along with network security settings.
Communication Services	HTTP, SSH, XML API, IPMI over LAN, and SNMP settings.
Certificate Management	Security certificate information and management.

Admin Tab Node Name	Work Pane Tabs Provide Information About...
Cisco IMC Log	
Event Management	Platform event filters.
Firmware Management	Cisco IMC and BIOS firmware information and management.
Utilities	Technical support data collection, system configuration import and export options, and restore factory defaults settings.

Storage Tab

Each node in the **Storage** tab corresponds to the LSI MegaRAID controllers or Cisco FlexFlash controllers that are installed in the Cisco UCS C-Series Rack-Mount Servers. Each node leads to one or more tabs that display in the **Work** pane and provide information about the installed controllers.

Storage Tab Node Name	Work Pane Tabs Provide Information About...
Controller Info	General information about the selected MegaRAID controller or Cisco Flexible Flash controller.
Physical Drive Info	General drive information, identification information, and drive status
Virtual Drive Info	General drive information, RAID information, and physical drive information.
Battery Backup Unit	Backup battery information for the selected MegaRAID controller.
Storage Log	Storage messages.

Toolbar

The toolbar displays above the **Work** pane.

Button Name	Description
Refresh	Refreshes the current page.
Power On Server	Powers on the server.
Power Off Server	Powers off the server.
Launch KVM Console	Launches the KVM console.
Ping	Launches the Ping Details pane.

Button Name	Description
Help	Displays the online help for the tab displayed in the Work pane.
Info	Displays Cisco IMC information.

Cisco Integrated Management Controller Online Help Overview

The GUI for the Cisco Integrated Management Controller (Cisco IMC) software is divided into two main sections, a **Navigation** pane on the left and a **Work** pane on the right.

This help system describes the fields on each Cisco IMC GUI page and in each dialog box.

To access the page help, do one of the following:

- In a particular tab in the Cisco IMC GUI, click the **Help** icon in the toolbar above the **Work** pane.
- In a dialog box, click the **Help** button in that dialog box.



Note

For a complete list of all C-Series documentation, see the *Cisco UCS C-Series Servers Documentation Roadmap* available at the following URL: <http://www.cisco.com/go/unifiedcomputing/c-series-doc>.

Logging In to Cisco IMC

Before You Begin

If not installed, install Adobe Flash Player 10 or later on your local machine.

Procedure

-
- Step 1** In your web browser, type or select the web link for Cisco IMC.
- Step 2** If a security dialog box displays, do the following:
- (Optional) Check the check box to accept all content from Cisco.
 - Click **Yes** to accept the certificate and continue.
- Step 3** In the log in window, enter your username and password.
- Tip** When logging in for the first time to an unconfigured system, use **admin** as the username and **password** as the password.
- Step 4** Click **Log In**.
-

Logging Out of Cisco IMC

Procedure

- Step 1** In the upper right of Cisco IMC, click **Log Out**.
Logging out returns you to the Cisco IMC log in page.
- Step 2** (Optional) Log back in or close your web browser.
-