



Overview

This chapter includes the following sections:

- [Overview of the Cisco UCS C-Series Rack-Mount Servers, page 1](#)
- [Overview of the Server Software, page 1](#)
- [Cisco Integrated Management Controller, page 2](#)
- [Overview of the CIMC User Interface, page 3](#)

Overview of the Cisco UCS C-Series Rack-Mount Servers

The Cisco UCS C-Series rack-mount servers include the following models:

- Cisco UCS C200 Rack-Mount Server
- Cisco UCS C210 Rack-Mount Server
- Cisco UCS C220 Rack-Mount Server
- Cisco UCS C240 Rack-Mount Server
- Cisco UCS C250 Rack-Mount Server
- Cisco UCS C260 Rack-Mount Server
- Cisco UCS C460 Rack-Mount Server



Note

To determine which Cisco UCS C-Series rack-mount servers are supported by this firmware release, see the associated *Release Notes*. The C-Series release notes are available at the following URL: http://www.cisco.com/en/US/products/ps10739/prod_release_notes_list.html

Overview of the Server Software

The Cisco UCS C-Series Rack-Mount Server ships with two major software systems installed.

CIMC Firmware

CIMC is a separate management module built into the motherboard. A dedicated ARM-based processor, separate from the main server CPU, runs the CIMC firmware. The system ships with a running version of the CIMC firmware. You can update the CIMC firmware, but no initial installation is needed.

Server OS

The main server CPU runs an OS such as Windows or Linux. The server ships with a pre-installed OS, but you can install a different OS using the DVD drive or over the network. You can use CIMC to install the new OS using the KVM console and vMedia.

**Note**

You can access the available OS installation documentation from the *Cisco UCS C-Series Servers Documentation Roadmap* at <http://www.cisco.com/go/unifiedcomputing/c-series-doc>.

Cisco Integrated Management Controller

The CIMC is the management service for the C-Series servers. CIMC runs within the server.

**Note**

The CIMC management service is used only when the server is operating in Standalone Mode. If your C-Series server is integrated into a UCS system, you must manage it using UCS Manager. For information about using UCS Manager, see the configuration guides listed in the *Cisco UCS B-Series Servers Documentation Roadmap* at <http://www.cisco.com/go/unifiedcomputing/b-series-doc>.

Management Interfaces

You can use a web-based GUI or SSH-based CLI to access, configure, administer, and monitor the server. Almost all tasks can be performed in either interface, and the results of tasks performed in one interface are displayed in another. However, you cannot do the following:

- Use CIMC GUI to invoke CIMC CLI
- View a command that has been invoked through CIMC CLI in CIMC GUI
- Generate CIMC CLI output from CIMC GUI

Tasks You Can Perform in CIMC

You can use CIMC to perform the following server management tasks:

- Power on, power off, power cycle, reset and shut down the server
- Toggle the locator LED
- Configure the server boot order
- View server properties and sensors
- Manage remote presence

- Create and manage local user accounts, and enable remote user authentication through Active Directory
- Configure network-related settings, including NIC properties, IPv4, VLANs, and network security
- Configure communication services, including HTTP, SSH, and IPMI Over LAN
- Manage certificates
- Configure platform event filters
- Update CIMC firmware
- Monitor faults, alarms, and server status

No Operating System or Application Provisioning or Management

CIMC provisions servers, and as a result, exists below the operating system on a server. Therefore, you cannot use it to provision or manage operating systems or applications on servers. For example, you cannot do the following:

- Deploy an OS, such as Windows or Linux
- Deploy patches for software, such as an OS or an application
- Install base software components, such as anti-virus software, monitoring agents, or backup clients
- Install software applications, such as databases, application server software, or web servers
- Perform operator actions, including restarting an Oracle database, restarting printer queues, or handling non-CIMC user accounts
- Configure or manage external storage on the SAN or NAS storage

Overview of the CIMC User Interface

The CIMC user interface is a web-based management interface for Cisco C-Series servers. You can launch the CIMC user interface and manage the server from any remote host that meets the following minimum requirements:

- Java 1.6 or later
- HTTP and HTTPS enabled
- Adobe Flash Player 10 or later

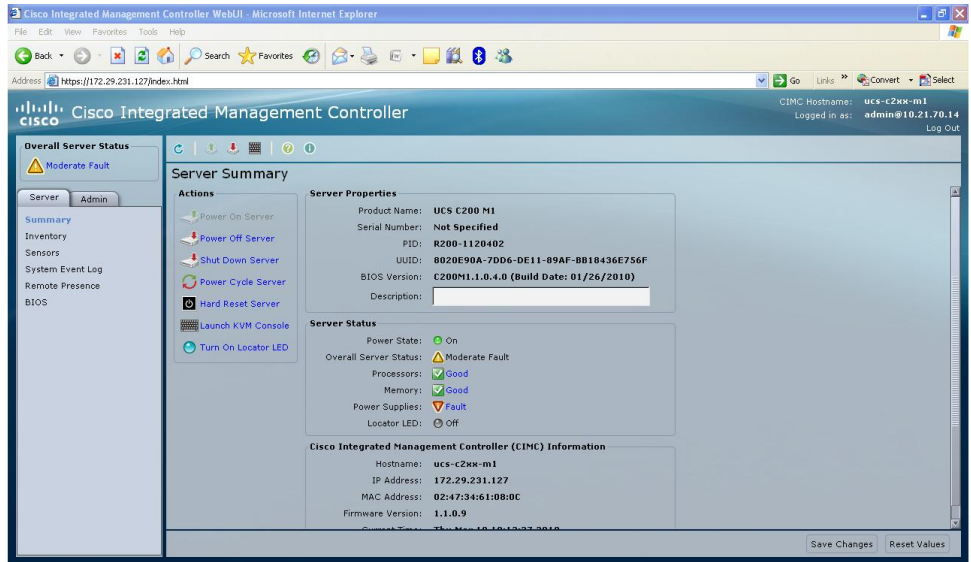


Note

In case you lose or forget the password that you use to log in to CIMC, see the password recovery instructions in the Cisco UCS C-Series server installation and service guide for your server. This guide is available from the *Cisco UCS C-Series Servers Documentation Roadmap* at <http://www.cisco.com/go/unifiedcomputing/c-series-doc>.

CIMC Home Page

When you first log into CIMC GUI, the user interface looks similar to the following illustration:



Navigation and Work Panes

The **Navigation** pane displays on the left side of the CIMC GUI. Clicking links on the **Server** or **Admin** tabs in the **Navigation** pane displays the associated tabs in the **Work** pane on the right.

The **Navigation** pane has the following areas:

- Overall Server Status area
- Server tab
- Admin tab

Overall Server Status Area

The **Overall Server Status** area is above the **Server** and **Admin** tabs. Click the link in area to refresh the **Server Summary** tab in the **Work** pane.



Note

If a different tab is displayed in the **Work** pane, clicking this link redisplay the **Server Summary** tab with updated server information.

Server Tab

Each node in the **Server** tab leads to one or more tabs that display in the **Work** pane. These tabs provides access to the following information:

Server Tab Node Name	Work Pane Tabs Provide Information About...
Summary	Server properties, status, BIOS version, CIMC firmware version, IP address, and MAC address.
Inventory	Installed CPUs, memory cards, power supplies, network adapters, storage cards, and PCI adapters.
Sensors	Power supply, fan, temperature, voltage, current, LEDs, and storage sensor readings.
System Event Log	System event messages.
Remote Presence	KVM, virtual media, and Serial over LAN settings.
BIOS	The installed BIOS firmware version and the server boot order.
Power Policies	Power policy settings.
Fault Summary	Fault sensor readings.

Admin Tab

Each node in the **Admin** tab leads to one or more tabs that display in the **Work** pane. These tabs provides access to the following information:

Admin Tab Node Name	Work Pane Tabs Provide Information About...
User Management	Locally-defined user accounts, Active Directory settings, and current user session information.
Network	NIC, IPv4, VLAN, and LOM properties, along with network security settings.
Communication Services	HTTP, SSH, XML API, IPMI over LAN, and SNMP settings.
Certificate Management	Security certificate information and management.
CIMC Log	CIMC messages.
Event Management	Platform event filters.
Firmware Management	CIMC and BIOS firmware information and management.
Utilities	Technical support data collection, system configuration import and export options, and restore factory defaults settings.

Toolbar

The toolbar displays above the **Work** pane.

Button Name	Description
Refresh	Refreshes the current page.
Power On Server	Powers on the server.
Power Off Server	Powers off the server.
Launch KVM Console	Launches the KVM console.
Help	Displays the online help for the tab displayed in the Work pane.
Info	Displays CIMC information.

Cisco Integrated Management Controller Online Help Overview

The GUI for the Cisco Integrated Management Controller (CIMC) software is divided into two main sections, a **Navigation** pane on the left and a **Work** pane on the right.

This help system describes the fields on each CIMC GUI page and in each dialog box.

To access the page help, do one of the following:

- In a particular tab in the CIMC GUI, click the **Help** icon in the toolbar above the **Work** pane.
- In a dialog box, click the **Help** button in that dialog box.



Note

For a complete list of all C-Series documentation, see the *Cisco UCS C-Series Servers Documentation Roadmap* available at the following URL: <http://www.cisco.com/go/unifiedcomputing/c-series-doc>.

Logging In to CIMC

Before You Begin

If not installed, install Adobe Flash Player 10 or later on your local machine.

Procedure

- Step 1** In your web browser, type or select the web link for CIMC.
- Step 2** If a security dialog box displays, do the following:
- (Optional) Check the check box to accept all content from Cisco.
 - Click **Yes** to accept the certificate and continue.
- Step 3** In the log in window, enter your username and password.
- Tip** When logging in for the first time to an unconfigured system, use **admin** as the username and **password** as the password.
- Step 4** Click **Log In**.
-

Logging Out of CIMC

Procedure

- Step 1** In the upper right of CIMC, click **Log Out**.
Logging out returns you to the CIMC log in page.
- Step 2** (Optional) Log back in or close your web browser.
-

