

CHAPTER 5

Troubleshooting the CTS 500 32"

May, 2011, OL-21845-01

You may want to periodically test system components using the hardware and software tests available in the Cisco TelePresence System (CTS) Administration Troubleshooting window. This chapter contains information about troubleshooting CTS 500 32" hardware and software.

Before You Begin

1. Obtain your IP address from the CTS Cisco Unified IP phone by touching the following softkeys:

Manual > more > Info



Note If you have more options on your phone, touch the **more** softkey until you reach the end of the selections.

2. Make a note of the IP address.
3. Enter the IP address in your laptop's browser window.
4. Click **Yes** to accept all security connection messages.



Note You cannot perform diagnostics during an active Cisco TelePresence system call.

Proceed to the following sections to troubleshoot system components:

- [Adjusting the Camera, page 5-2](#)
- [Testing the Display, page 5-2](#)
- [Verifying Speaker Function, page 5-3](#)
- [Verifying Microphone Function, page 5-4](#)
- [Testing the Light Fixture, page 5-5](#)
- [Testing Digital Media Player Audio, page 5-5](#)
- [Troubleshooting the CTS 500 32", page 5-6](#)
- [Where to Go Next, page 5-7](#)



Note The display used in this product contains mercury. Dispose of according to local, state, and federal laws.

Adjusting the Camera

Refer to the *Cisco TelePresence System 500 32" Assembly, Use & Care, and Field-Replaceable Unit Guide* on Cisco.com for complete camera management information.

Testing the Display

Different light sources and the amount of light in terms of lumens or watts produces different color temperatures. These color temperatures are sometimes expressed using terms such as cool, warm, or daylight, but can be expressed more precisely in kelvins (K) as a numeric value.



Note

Cisco recommends that you use lighting with a color temperature of 4000 to 4100 K.



Tip

In many cases, the color temperature is printed on the light bulb.



Note

If you are unable to determine the type and color temperature of light bulbs in the meeting room, experiment with color temperature settings until the color and images on the display screen look lifelike. Each time you change the setting and click **Apply**, the color temperature in the display changes. You cannot see these changes until you enter loopback mode for the camera. See “[Verifying Speaker Function](#)” section on page 5-3 to enter loopback mode.

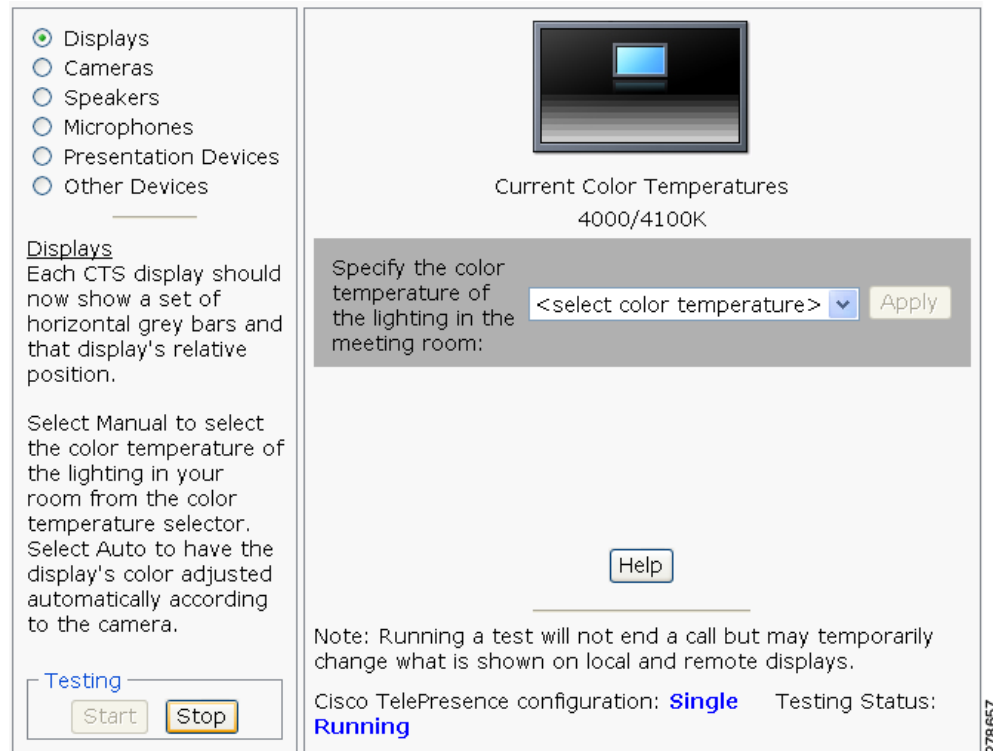
To adjust a display:

- Step 1** Log in to the Cisco TelePresence System.
- Step 2** Choose **Troubleshooting > Hardware Setup**.
- Step 3** Click the **Displays** radio button. A test image appears.
- Step 4** Click **Start** in the Testing box to start the adjustment process. The Current Color Temperature test screen appears, as shown in [Figure 5-1](#).



Note

Each display in the meeting room should be showing a set of horizontal grey bars and that display's relative position. The current color temperature setting is displayed.

Figure 5-1 Color Temperature Test Screen

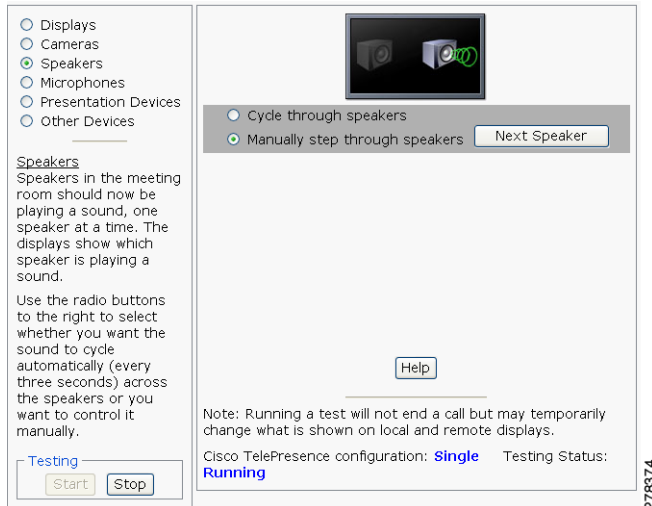
- Step 5** Select the color temperature of the lighting in the meeting room from the drop-down menu. The Apply button is activated.
- Step 6** Click **Apply**.
- Step 7** Click **Stop** to stop the test.

Verifying Speaker Function

To verify that the speakers are working properly and that the left and right speakers are not switched:

- Step 1** Log in to the Cisco TelePresence System.
- Step 2** Navigate to **Troubleshooting > Hardware Setup > Speakers**.
- Step 3** Click **Start** to begin the speaker test. The speaker test screen appears, as shown in [Figure 5-2](#)

Figure 5-2 Speaker Test Screen



- Step 4** Click **Cycle Through Speakers** to have sound cycled automatically for 5 seconds on each speaker.
- Step 5** Listen carefully as the sound moves from the left to the right speaker and watch the speaker icons on the display.
- Step 6** Make sure the sound from the speakers corresponds with the left and right speaker icons on the display.



Note You might have to move close to the display to determine the source of the sound.

- Step 7** Click **Stop** to end testing.

Verifying Microphone Function



Tip During a call, the CTS 500 32" microphone can transmit ambient noise in the surrounding area, such as other people talking in or near the same area. Make every effort to reduce or eliminate background noise before you begin the test call.

To verify that the CTS 500 32" microphone array is working properly:

- Step 1** Log in to the Cisco TelePresence System.
- Step 2** Navigate to **Troubleshooting > Hardware Setup > Microphones**.
- Step 3** Click **Start** to begin the test.
- Step 4** Lightly tap the microphone on the underside of the display and watch the audio meter on the display to make sure that the sound registers.

Step 5 Click **Stop** to end the test.

Testing the Light Fixture

Use the following information to check the LEDs, light fixture, and configure the audio for the digital media player (DMP).

Light

Each CTS 500 32" has a built-in light fixture. This troubleshooting feature lets you see or change the status of the light.

Step 1 Navigate to **Troubleshooting > Hardware Setup > Other Devices**.

Step 2 Click the **Light** tab.

Step 3 Click the **Start** radio button to begin testing the light. If the light feature is enabled, the **Light State On** button is highlighted. If the light feature is disabled, the **Light State Off** button is highlighted. Click the **Light State On or Light State Off** button to change the current state of the light.

Step 4 To end the test, click **Stop**.

When you end the testing, the state of the light reverts to its default setting as specified in Cisco Unified Communications Manager.

Testing Digital Media Player Audio

When you are not in a Cisco TelePresence call, the DMP feature allows you to use the DMP audio as the secondary audio input source. To configure and test the DMP audio:

Step 1 Connect the DMP to the codec and display as follows:

- Connect the DMP HD video cable to the HD Video input marked as "Auxiliary Input (ex. DMP)" on the codec.
- Connect the DMP audio cable to the Auxiliary PC Audio input on the codec.

Step 2 Navigate to **Troubleshooting > Hardware Setup > Other Devices**.

Step 3 Click the **DMP** tab.

Step 4 Click the **Start** button.

Step 5 Select one of the following radio buttons:

- Select the **DMP** radio button if the audio that you connected to the codec is coming from a DMP.
- If you are using a non-DMP source, select the **PC** radio button.

When **Secondary Audio Input Source** is set to **DMP**, audio input is active only when:

- The CTS 500 32" is not in a call
- The time period is during normal business hours



Note Define normal business hours with the Display on Time and Display on Duration fields in Cisco Unified Communications Manager. For information about configuring normal business hours for your CTS 500 32”, see the *Cisco Unified Communications Manager Configuration Guide for the Cisco TelePresence System*.

When **Secondary Audio Input Source** is set to **PC**, the audio input is active while the presentation source is active, both in and out of a call.

- Step 6** To end DMP audio configuration or testing, click **Stop**.
The CTS 500 32” retains the setting that you just set.

Troubleshooting the CTS 500 32”

Table 5-1 Troubleshooting the CTS 500 32”

Problem	Possible Cause	Actions
Phone verification fails during first-time setup.	The DHCP has dynamically allocated a TFTP server address that is different than the actual TFTP address of the Unified Communications Manager server for your system.	To fix this problem, complete the following steps: <ol style="list-style-type: none"> 1. Run the first-time setup wizard until you reach the System Verification Complete Screen. 2. Click the CTS Admin UI button to go to the Cisco TelePresence Administration interface. 3. Enter your username and password. <p>Tip By default, the username is admin and the password is cisco.</p> <ol style="list-style-type: none"> 4. Navigate to Unified CM Settings. 5. Click the Specify radio button, which allows you to change the TFTP server IP address. 6. Change the TFTP server to the valid TFTP server address for your system. 7. Click Apply.
When running the First Time Setup Wizard, the Eye Height check box is not checked.	The check box for the Eye Height Setup checklist on the left side of the first-time setup wizard should be checked. In some cases, however, the box does not get checked.	This does not note a problem with the system. No action is required.
Camera setup or troubleshooting fails.	The room may be too dark.	Add more light to the room and click Try Again to rerun the camera setup procedure.

Note For more system troubleshooting information, see the *Cisco TelePresence System Troubleshooting Guide* on Cisco.com.

Where to Go Next

- For information about system messages that may appear on the Cisco TelePresence system, see the *Cisco TelePresence System Message Guide* on the [Cisco TelePresence Administration Software Error and System Messages](#) home page on Cisco.com.
- See the [First-Time Setup](#) chapter of the *Cisco TelePresence System 500 32" Assembly, Use & Care, and Field-Replaceable Unit Guide* for complete information about the CTS 500 32".

