



# Appendix

---

This chapter contains the following sections:

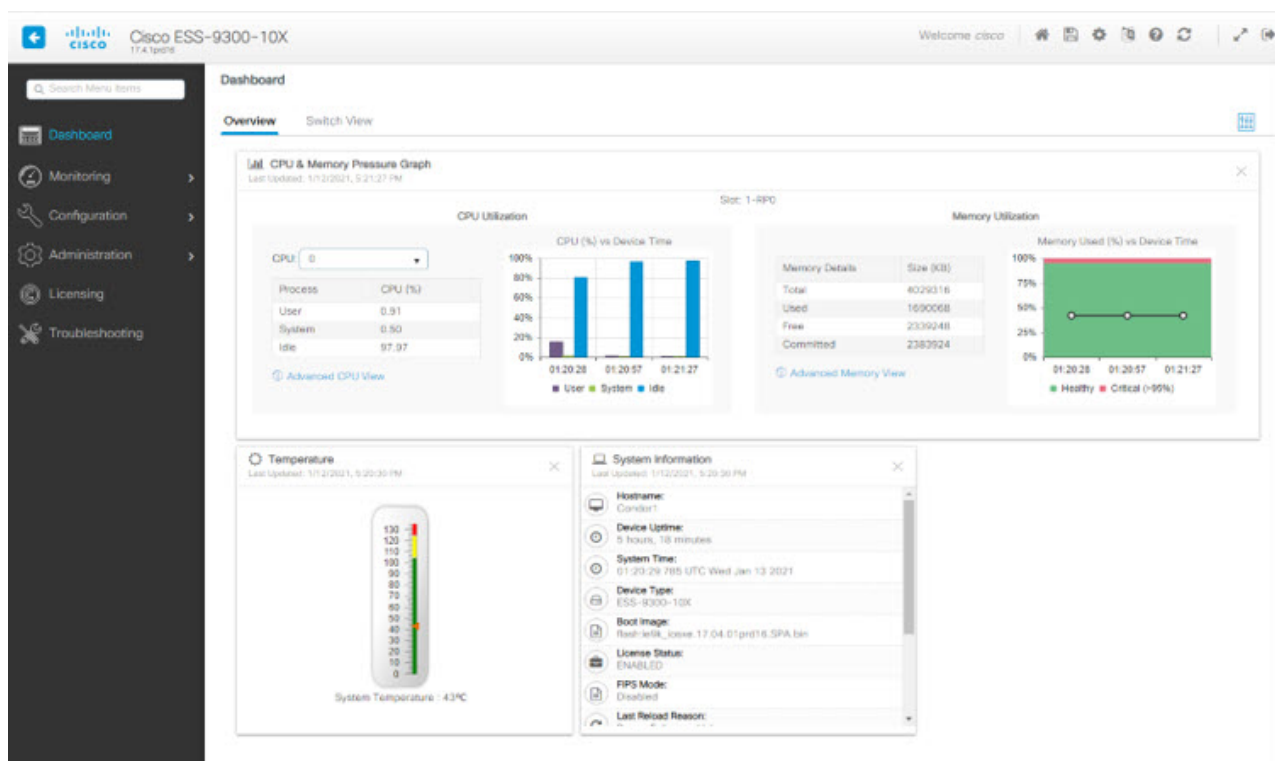
- [Web User Interface, on page 1](#)
- [Compliance and Safety Information, on page 2](#)
- [Restriction of Hazardous Substances \(RoHS\), on page 4](#)
- [Related Documentation, on page 4](#)
- [Communications, services, and additional information, on page 4](#)

## Web User Interface

The Cisco IOS-XE operating system provides a graphical user interface for monitoring and configuration of your device. The WebUI needs to be enabled before it can be used. Use these commands to enable it:

```
username admin privilege 15 password 0 ess9300
ip http server
ip http authentication local
ip http secure-server
```

When launched, the initial display is a dashboard that looks similar to the following example:



## Compliance and Safety Information

The ESS 9300 was installed in a representative chassis, tested, and shown to meet the standards listed in the following tables. Individual results will depend on final implementation. Formal compliance testing must be performed by the system integrator in a fully assembled product.

Specification	Description
Safety	UL 60950-1 Recognized Component (R/C) CSA22.2 No. 60950-1 EN60950-1 IEC60950-1 IEC62368-1 2nd Ed. EN62368-1 UL 62368-1 Recognized Component (R/C) CSA C22.2 No. 62368-1

Specification	Description
Emissions	EN 55022 / CISPR 22 EN 55032 / CISPR 32 FCC Part 15 Subpart B ICES 003 for class A device
Immunity	EN 55024 EN 55035 EN 61000-4-2 EN 61000-4-3 EN 61000-4-4 EN 61000-4-5 EN 61000-4-6 EN 61000-4-11 IEC 61000-4-8 IEC 61000-4-10 IEC 61000-4-16 IEC 61000-4-18
MIL Compliance  <b>Note</b> In Progress	CE101 CE102 CS101 CS109 CS114 CS115 CS116 CS117 CS118 RE101 RE102 RS101 RS103 RS105

# Restriction of Hazardous Substances (RoHS)

RoHS is directive being adopted worldwide that restricts certain limits of the following materials from certain manufactured products:

- Lead (Pb): < 1000 ppm
- Mercury (Hg): < 100 ppm
- Cadmium (Cd): < 100 ppm
- Hexavalent Chromium: (Cr VI) < 1000 ppm
- Polybrominated Biphenyls (PBB): < 1000 ppm
- Polybrominated Diphenyl Ethers (PBDE): < 1000 ppm

Cisco products fall under RoHS Category 3, Computing & Communications Equipment. Cisco products must be RoHS-certified prior to being shipped/imported to the following RoHS countries: Austria, Belgium, Bulgaria, Cyprus, Czech Republic, Denmark, Estonia, Finland, France, Germany, Greece, Hungary, Ireland, Italy, Latvia, Lithuania, Luxembourg, Malta, Netherlands, Poland, Portugal, Romania, Slovakia, Slovenia, Spain, Sweden, United Kingdom

## Related Documentation

- [ESS9300 Software Configuration Guide](#)
- [ESS9300 Documentation Landing Page](#)

## Communications, services, and additional information

- To receive timely, relevant information from Cisco, sign up at [Cisco Profile Manager](#).
- To get the business impact you're looking for with the technologies that matter, visit [Cisco Services](#).
- To submit a service request, visit [Cisco Support](#).
- To discover and browse secure, validated enterprise-class apps, products, solutions, and services, visit [Cisco DevNet](#).
- To obtain general networking, training, and certification titles, visit [Cisco Press](#).
- To find warranty information for a specific product or product family, access [Cisco Warranty Finder](#).

## Cisco Bug Search Tool

[Cisco Bug Search Tool](#) (BST) is a gateway to the Cisco bug-tracking system, which maintains a comprehensive list of defects and vulnerabilities in Cisco products and software. The BST provides you with detailed defect information about your products and software.

## Documentation feedback

To provide feedback about Cisco technical documentation, use the feedback form available in the right pane of every online document.

