



# Configuring IGMP

---

- [Prerequisites for IGMP and IGMP Snooping, on page 1](#)
- [Restrictions for IGMP and IGMP Snooping, on page 2](#)
- [Information about IGMP, on page 3](#)
- [Default IGMP Configuration, on page 13](#)
- [How to Configure IGMP, on page 15](#)
- [How to Configure IGMP Snooping, on page 32](#)
- [Monitoring IGMP, on page 50](#)
- [Configuration Examples for IGMP, on page 53](#)
- [Additional References for IGMP, on page 58](#)
- [Feature History for IGMP, on page 58](#)

## Prerequisites for IGMP and IGMP Snooping

### Prerequisites for IGMP Snooping

Observe these guidelines when configuring the IGMP snooping querier:

- Configure the VLAN in global configuration mode.
- Configure an IP address on the VLAN interface. When enabled, the IGMP snooping querier uses the IP address as the query source address.
- If there is no IP address configured on the VLAN interface, the IGMP snooping querier tries to use the configured global IP address for the IGMP querier. If there is no global IP address specified, the IGMP querier tries to use the VLAN device virtual interface (SVI) IP address (if one exists). If there is no SVI IP address, the device uses the first available IP address configured on the device. The first IP address available appears in the output of the **show ip interface** privileged EXEC command. The IGMP snooping querier does not generate an IGMP general query if it cannot find an available IP address on the device.
- The IGMP snooping querier supports IGMP Versions 1 and 2.
- When administratively enabled, the IGMP snooping querier moves to the nonquerier state if it detects the presence of a multicast router in the network.
- When it is administratively enabled, the IGMP snooping querier moves to the operationally disabled state under these conditions:

- IGMP snooping is disabled in the VLAN.
- PIM is enabled on the SVI of the corresponding VLAN.

## Restrictions for IGMP and IGMP Snooping

### Restrictions for Configuring IGMP

The following are the restrictions for configuring IGMP:

- The device supports IGMP Versions 1, 2, and 3.




---

**Note** For IGMP Version 3, only IGMP Version 3 BISS (Basic IGMPv3 Snooping Support) is supported.

---

- IGMP Version 3 uses new membership report messages that might not be correctly recognized by older IGMP snooping devices.
- IGMPv3 can operate with both ISM and SSM. In ISM, both exclude and include mode reports are applicable. In SSM, only include mode reports are accepted by the last-hop router. Exclude mode reports are ignored.
- Use ACLs to designate a specified port only as a multicast host port and not as a multicast router port. Multicast router control-packets received on this port are dropped.

### Restrictions for IGMP Snooping

The following are the restrictions for IGMP snooping:

- The device supports IGMPv3 snooping based only on the destination multicast IP address. It does not support snooping based on a source IP address or proxy report.
- IGMPv3 join and leave messages are not supported on the devices running IGMP filtering or Multicast VLAN registration (MVR).
- IGMP report suppression is supported only when the multicast query has IGMPv1 and IGMPv2 reports. This feature is not supported when the query includes IGMPv3 reports.
- The IGMP configurable leave time is only supported on hosts running IGMP Version 2. IGMP version 2 is the default version for the device.

The actual leave latency in the network is usually the configured leave time. However, the leave time might vary around the configured time, depending on real-time CPU load conditions, network delays and the amount of traffic sent through the interface.

- The IGMP throttling action restriction can be applied only to Layer 2 ports. You can use **ip igmp max-groups action replace** interface configuration command on a logical EtherChannel interface but cannot use it on ports that belong to an EtherChannel port group.

When the maximum group limitation is set to the default (no maximum), entering the **ip igmp max-groups action {deny | replace}** command has no effect.

If you configure the throttling action and set the maximum group limitation after an interface has added multicast entries to the forwarding table, the forwarding-table entries are either aged out or removed, depending on the throttling action.

## Information about IGMP

### Role of the Internet Group Management Protocol

IGMP is used to dynamically register individual hosts in a multicast group on a particular LAN. Enabling PIM on an interface also enables IGMP. IGMP provides a means to automatically control and limit the flow of multicast traffic throughout your network with the use of special multicast queriers and hosts.

- A querier is a network device, such as a router, that sends query messages to discover which network devices are members of a given multicast group.
- A host is a receiver, including routers, that sends report messages (in response to query messages) to inform the querier of a host membership. Hosts use IGMP messages to join and leave multicast groups.

Hosts identify group memberships by sending IGMP messages to their local multicast device. Under IGMP, devices listen to IGMP messages and periodically send out queries to discover which groups are active or inactive on a particular subnet.

### IGMP Multicast Addresses

IP multicast traffic uses group addresses, which are Class D IP addresses. The high-order four bits of a Class D address are 1110. Therefore, host group addresses can be in the range 224.0.0.0 to 239.255.255.255.

Multicast addresses in the range 224.0.0.0 to 224.0.0.255 are reserved for use by routing protocols and other network control traffic. The address 224.0.0.0 is guaranteed not to be assigned to any group.

IGMP packets are transmitted using IP multicast group addresses as follows:

- IGMP general queries are destined to the address 224.0.0.1 (all systems on a subnet).
- IGMP group-specific queries are destined to the group IP address for which the device is querying.
- IGMP group membership reports are destined to the group IP address for which the device is reporting.
- IGMPv2 leave-group messages are destined to the address 224.0.0.2 (all devices on a subnet).
- IGMPv3 membership reports are destined to the address 224.0.0.22; all IGMPv3-capable multicast devices must listen to this address.

### IGMP Versions

The device supports IGMP version 1, IGMP version 2, and IGMP version 3. These versions are interoperable on the device. For example, if IGMP snooping is enabled and the querier's version is IGMPv2, and the device receives an IGMPv3 report from a host, then the device can forward the IGMPv3 report to the multicast router.

An IGMPv3 device can receive messages from and forward messages to a device running the Source Specific Multicast (SSM) feature.

## IGMP Version 1

IGMP version 1 (IGMPv1) primarily uses a query-response model that enables the multicast router and multilayer device to find which multicast groups are active (have one or more hosts interested in a multicast group) on the local subnet. IGMPv1 has other processes that enable a host to join and leave a multicast group. For more information, see RFC 1112.

## IGMP Version 2

IGMPv2 extends IGMP functionality by providing such features as the IGMP leave process to reduce leave latency, group-specific queries, and an explicit maximum query response time. IGMPv2 also adds the capability for routers to elect the IGMP querier without depending on the multicast protocol to perform this task. For more information, see RFC 2236.



---

**Note** IGMP version 2 is the default version for the device.

---

## IGMP Version 3

The device supports IGMP version 3.

An IGMPv3 device supports Basic IGMPv3 Snooping Support (BISS), which includes support for the snooping features on IGMPv1 and IGMPv2 switches and for IGMPv3 membership report messages. BISS constrains the flooding of multicast traffic when your network includes IGMPv3 hosts. It constrains traffic to approximately the same set of ports as the IGMP snooping feature on IGMPv2 or IGMPv1 hosts.

An IGMPv3 device can receive messages from and forward messages to a device running the Source Specific Multicast (SSM) feature.

## IGMPv3 Host Signaling

IGMPv3 is the third version of the IETF standards track protocol in which hosts signal membership to last-hop devices of multicast groups. IGMPv3 introduces the ability for hosts to signal group membership that allows filtering capabilities with respect to sources. A host can signal either that it wants to receive traffic from all sources sending to a group except for some specific sources (a mode called EXCLUDE) or that it wants to receive traffic only from some specific sources sending to the group (a mode called INCLUDE).

IGMPv3 can operate with both ISM and SSM. In ISM, both EXCLUDE and INCLUDE mode reports are accepted by the last-hop router. In SSM, only INCLUDE mode reports are accepted by the last-hop router.

## IGMP Versions Differences

There are three versions of IGMP, as defined by Request for Comments (RFC) documents of the Internet Engineering Task Force (IETF). IGMPv2 improves over IGMPv1 by adding the ability for a host to signal desire to leave a multicast group and IGMPv3 improves over IGMPv2 mainly by adding the ability to listen to multicast originating from a set of source IP addresses only.

Table 1: IGMP Versions

| IGMP Version | Description  |
|--------------|--|
| IGMPv1       | Provides the basic query-response mechanism that allows the multicast device to determine which multicast groups are active and other processes that enable hosts to join and leave a multicast group. RFC 1112 defines the IGMPv1 host extensions for IP multicasting.  |
| IGMPv2       | Extends IGMP, allowing such capabilities as the IGMP leave process, group-specific queries, and an explicit maximum response time field. IGMPv2 also adds the capability for devices to elect the IGMP querier without dependence on the multicast protocol to perform this task. RFC 2236 defines IGMPv2.   |
| IGMPv3       | Provides for source filtering, which enables a multicast receiver host to signal to a device which groups it wants to receive multicast traffic from, and from which sources this traffic is expected. In addition, IGMPv3 supports the link local address 224.0.0.22, which is the destination IP address for IGMPv3 membership reports; all IGMPv3-capable multicast devices must listen to this address. RFC 3376 defines IGMPv3. |



**Note** By default, enabling a PIM on an interface enables IGMPv2 on that device. IGMPv2 was designed to be as backward compatible with IGMPv1 as possible. To accomplish this backward compatibility, RFC 2236 defined special interoperability rules. If your network contains legacy IGMPv1 hosts, you should be familiar with these operability rules. For more information about IGMPv1 and IGMPv2 interoperability, see RFC 2236, Internet Group Management Protocol, Version 2 .

### Devices That Run IGMPv1

IGMPv1 devices send IGMP queries to the “all-hosts” multicast address of 224.0.0.1 to solicit multicast groups with active multicast receivers. The multicast receivers also can send IGMP reports to the device to notify it that they are interested in receiving a particular multicast stream. Hosts can send the report asynchronously or in response to the IGMP queries sent by the device. If more than one multicast receiver exists for the same multicast group, only one of these hosts sends an IGMP report message; the other hosts suppress their report messages.

In IGMPv1, there is no election of an IGMP querier. If more than one device on the segment exists, all the devices send periodic IGMP queries. IGMPv1 has no special mechanism by which the hosts can leave the group. If the hosts are no longer interested in receiving multicast packets for a particular group, they simply do not reply to the IGMP query packets sent from the device. The device continues sending query packets. If the device does not hear a response in three IGMP queries, the group times out and the device stops sending multicast packets on the segment for the group. If the host later wants to receive multicast packets after the timeout period, the host simply sends a new IGMP join to the device, and the device begins to forward the multicast packet again.

If there are multiple devices on a LAN, a designated router (DR) must be elected to avoid duplicating multicast traffic for connected hosts. PIM devices follow an election process to select a DR. The PIM device with the highest IP address becomes the DR.

The DR is responsible for the following tasks:

- Sending PIM register and PIM Join and Prune messages toward the rendezvous point (RP) to inform it about host group membership.
- Sending IGMP host-query messages.
- Sending host-query messages by default every 60 seconds in order to keep the IGMP overhead on hosts and networks very low.

### Devices That Run IGMPv2

IGMPv2 improves the query messaging capabilities of IGMPv1.

The query and membership report messages in IGMPv2 are identical to the IGMPv1 messages with two exceptions:

- IGMPv2 query messages are broken into two categories: general queries (identical to IGMPv1 queries) and group-specific queries.
- IGMPv1 membership reports and IGMPv2 membership reports have different IGMP type codes.

IGMPv2 also enhances IGMP by providing support for the following capabilities:

- Querier election process--Provides the capability for IGMPv2 devices to elect the IGMP querier without having to rely on the multicast routing protocol to perform the process.
- Maximum Response Time field--A new field in query messages permits the IGMP querier to specify the maximum query-response time. This field permits the tuning of the query-response process to control response burstiness and to fine-tune leave latencies.
- Group-Specific Query messages--Permits the IGMP querier to perform the query operation on a specific group instead of all groups.
- Leave-Group messages--Provides hosts with a method of notifying devices on the network that they wish to leave the group.

Unlike IGMPv1, in which the DR and the IGMP querier are typically the same device, in IGMPv2 the two functions are decoupled. The DR and the IGMP querier are selected based on different criteria and may be different devices on the same subnet. The DR is the device with the highest IP address on the subnet, whereas the IGMP querier is the device with the lowest IP address.

Query messages are used to elect the IGMP querier as follows:

1. When IGMPv2 devices start, they each multicast a general query message to the all-systems group address of 224.0.0.1 with their interface address in the source IP address field of the message.
2. When an IGMPv2 device receives a general query message, the device compares the source IP address in the message with its own interface address. The device with the lowest IP address on the subnet is elected the IGMP querier.
3. All devices (excluding the querier) start the query timer, which is reset whenever a general query message is received from the IGMP querier. If the query timer expires, it is assumed that the IGMP querier has gone down, and the election process is performed again to elect a new IGMP querier.

By default, the timer is two times the query interval.

### Devices Running IGMPv3

IGMPv3 adds support for source filtering, which enables a multicast receiver host to signal to a device which groups it wants to receive multicast traffic from, and from which sources this traffic is expected. This membership information enables the software to forward traffic only from those sources from which receivers requested the traffic.

IGMPv3 supports applications that explicitly signal sources from which they want to receive traffic. With IGMPv3, receivers signal membership to a multicast group in the following two modes:

- **INCLUDE mode**--In this mode, the receiver announces membership to a group and provides a list of IP addresses (the INCLUDE list) from which it wants to receive traffic.
- **EXCLUDE mode**--In this mode, the receiver announces membership to a group and provides a list of IP addresses (the EXCLUDE list) from which it does not want to receive traffic. In other words, the host wants to receive traffic only from sources whose IP addresses are not listed in the EXCLUDE list. To receive traffic from all sources, like in the case of the Internet Standard Multicast (ISM) service model, a host expresses EXCLUDE mode membership with an empty EXCLUDE list.

IGMPv3 is the industry-designated standard protocol for hosts to signal channel subscriptions in an SSM network environment. For SSM to rely on IGMPv3, IGMPv3 must be available in the network stack portion of the operating systems running on the last hop devices and hosts and be used by the applications running on those hosts.

In IGMPv3, hosts send their membership reports to 224.0.0.22; all IGMPv3 devices, therefore, must listen to this address. Hosts, however, do not listen or respond to 224.0.0.22; they only send their reports to that address. In addition, in IGMPv3, there is no membership report suppression because IGMPv3 hosts do not listen to the reports sent by other hosts. Therefore, when a general query is sent out, all hosts on the wire respond.

## IGMP Join and Leave Process

### IGMP Join Process

When a host wants to join a multicast group, the host sends one or more unsolicited membership reports for the multicast group it wants to join. The IGMP join process is the same for IGMPv1 and IGMPv2 hosts.

In IGMPv3, the join process for hosts proceeds as follows:

- When a host wants to join a group, it sends an IGMPv3 membership report to 224.0.0.22 with an empty EXCLUDE list.
- When a host wants to join a specific channel, it sends an IGMPv3 membership report to 224.0.0.22 with the address of the specific source included in the INCLUDE list.
- When a host wants to join a group excluding particular sources, it sends an IGMPv3 membership report to 224.0.0.22 excluding those sources in the EXCLUDE list.



---

**Note** If some IGMPv3 hosts on a LAN wish to exclude a source and others wish to include the source, then the device will send traffic for the source on the LAN (that is, inclusion trumps exclusion in this situation).

---

## IGMP Leave Process

The method that hosts use to leave a group varies depending on the version of IGMP in operation.

### IGMPv1 Leave Process

There is no leave-group message in IGMPv1 to notify the devices on the subnet that a host no longer wants to receive the multicast traffic from a specific group. The host simply stops processing traffic for the multicast group and ceases responding to IGMP queries with IGMP membership reports for the group. As a result, the only way IGMPv1 devices know that there are no longer any active receivers for a particular multicast group on a subnet is when the devices stop receiving membership reports. To facilitate this process, IGMPv1 devices associate a countdown timer with an IGMP group on a subnet. When a membership report is received for the group on the subnet, the timer is reset. For IGMPv1 devices, this timeout interval is typically three times the query interval (3 minutes). This timeout interval means that the device may continue to forward multicast traffic onto the subnet for up to 3 minutes after all hosts have left the multicast group.

### IGMPv2 Leave Process

IGMPv2 incorporates a leave-group message that provides the means for a host to indicate that it wishes to stop receiving multicast traffic for a specific group. When an IGMPv2 host leaves a multicast group, if it was the last host to respond to a query with a membership report for that group, it sends a leave-group message to the all-devices multicast group (224.0.0.2).

### IGMPv3 Leave Process

IGMPv3 enhances the leave process by introducing the capability for a host to stop receiving traffic from a particular group, source, or channel in IGMP by including or excluding sources, groups, or channels in IGMPv3 membership reports.

## IGMP Snooping

Layer 2 can use IGMP snooping to constrain the flooding of multicast traffic by dynamically configuring Layer 2 interfaces so that multicast traffic is forwarded to only those interfaces associated with IP multicast devices. As the name implies, IGMP snooping requires the LAN device to snoop on the IGMP transmissions between the host and the router and to keep track of multicast groups and member ports. When the device receives an IGMP report from a host for a particular multicast group, the device adds the host port number to the forwarding table entry; when it receives an IGMP Leave Group message from a host, it removes the host port from the table entry. It also periodically deletes entries if it does not receive IGMP membership reports from the multicast clients.



---

**Note** For more information on IP multicast and IGMP, see RFC 1112 and RFC 2236.

---

The multicast router set on the active device sends out periodic general queries to all VLANs. All hosts interested in this multicast traffic send join requests and are added to the forwarding table entry. The device creates one entry per VLAN in the IGMP snooping IP multicast forwarding table for each group from which it receives an IGMP join request.

The device supports IP multicast group-based bridging, instead of MAC-addressed based groups. With multicast MAC address-based groups, if an IP address being configured translates (aliases) to a previously

configured MAC address or to any reserved multicast MAC addresses (in the range 224.0.0.xxx), the command fails. Because the device uses IP multicast groups, there are no address aliasing issues.

The IP multicast groups learned through IGMP snooping are dynamic. However, you can statically configure multicast groups by using the **ip igmp snooping vlan *vlan-id* static *ip\_address* interface *interface-id*** global configuration command. If you specify group membership for a multicast group address statically, your setting supersedes any automatic manipulation by IGMP snooping. Multicast group membership lists can consist of both user-defined and IGMP snooping-learned settings.

You can configure an IGMP snooping querier to support IGMP snooping in subnets without multicast interfaces because the multicast traffic does not need to be routed.

If a port spanning-tree, a port group, or a VLAN ID change occurs, the IGMP snooping-learned multicast groups from this port on the VLAN are deleted.

These sections describe IGMP snooping characteristics:

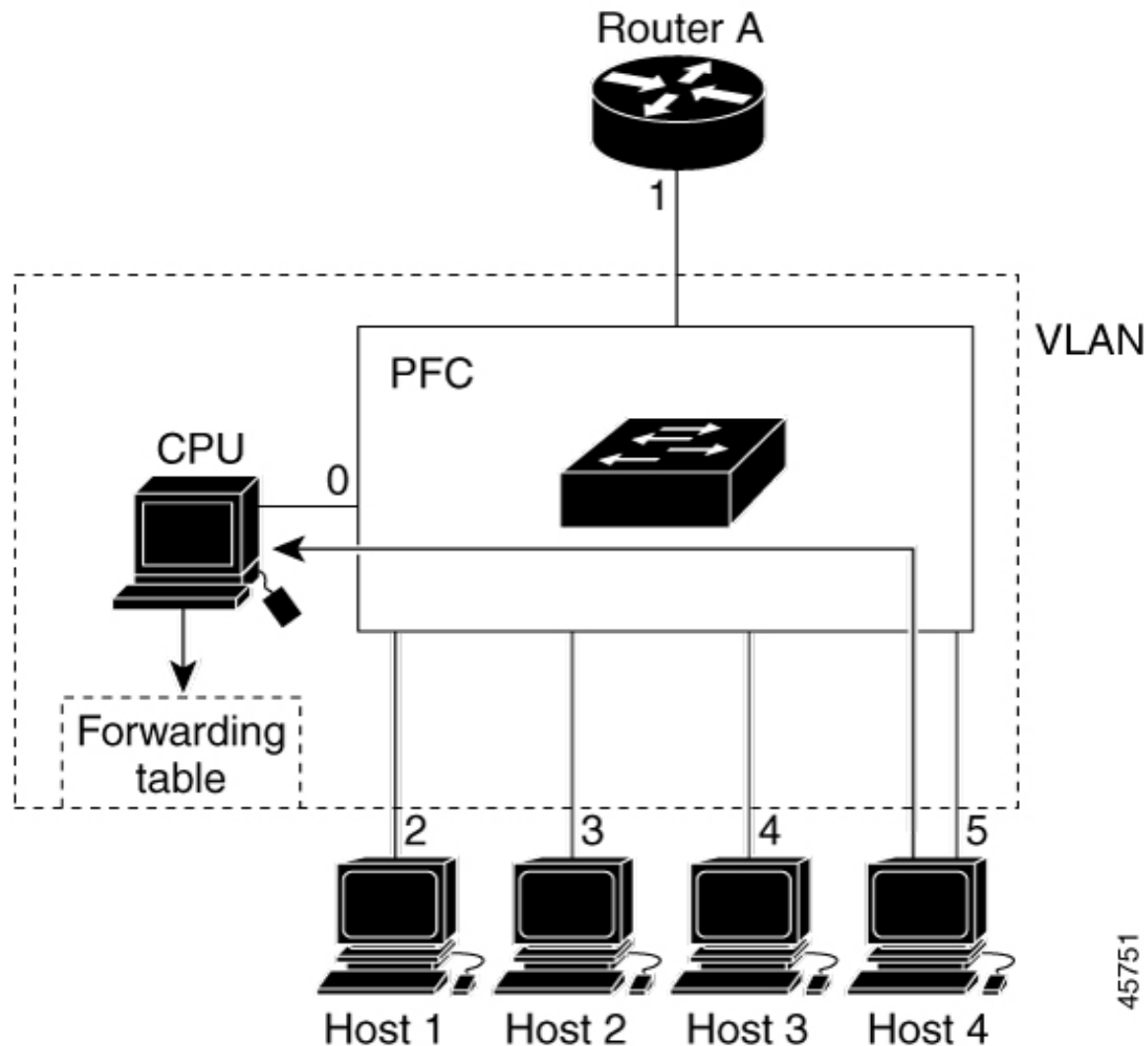
## Joining a Multicast Group

### *Figure 1: Initial IGMP Join Message*

When a host connected to the device wants to join an IP multicast group and it is an IGMP version 2 client, it sends an unsolicited IGMP join message, specifying the IP multicast group to join. Alternatively, when the device receives a general query from the router, it forwards the query to all ports in the VLAN. IGMP version 1 or version 2 hosts wanting to join the multicast group respond by sending a join message to the device. The device CPU creates a multicast forwarding-table entry for the group if it is not already present. The CPU also adds the interface where the join message was received to the forwarding-table entry. The host associated with that interface receives multicast traffic for that multicast group.



known multicast traffic is forwarded to the group and not to the CPU.



45751

Table 3: Updated IGMP Snooping Forwarding Table

| Destination Address | Type of Packet | Ports   |
|---------------------|----------------|---------|
| 224.1.2.3           | IGMP           | 1, 2, 5 |

## Leaving a Multicast Group

The router sends periodic multicast general queries, and the device forwards these queries through all ports in the VLAN. Interested hosts respond to the queries. If at least one host in the VLAN wants to receive multicast traffic, the router continues forwarding the multicast traffic to the VLAN. The device forwards multicast group traffic only to those hosts listed in the forwarding table for that IP multicast group maintained by IGMP snooping.

When hosts want to leave a multicast group, they can silently leave, or they can send a leave message. When the device receives a leave message from a host, it sends a group-specific query to learn if any other devices

connected to that interface are interested in traffic for the specific multicast group. The device then updates the forwarding table for that MAC group so that only those hosts interested in receiving multicast traffic for the group are listed in the forwarding table. If the router receives no reports from a VLAN, it removes the group for the VLAN from its IGMP cache.

## Immediate Leave

The device uses IGMP snooping Immediate Leave to remove from the forwarding table an interface that sends a leave message without the device sending group-specific queries to the interface. The VLAN interface is pruned from the multicast tree for the multicast group specified in the original leave message. Immediate Leave ensures optimal bandwidth management for all hosts on a switched network, even when multiple multicast groups are simultaneously in use.

Immediate Leave is only supported on IGMP version 2 hosts. IGMP version 2 is the default version for the device.




---

**Note** You should use the Immediate Leave feature only on VLANs where a single host is connected to each port. If Immediate Leave is enabled on VLANs where more than one host is connected to a port, some hosts may be dropped inadvertently.

---

## IGMP Configurable-Leave Timer

You can configure the time that the device waits after sending a group-specific query to determine if hosts are still interested in a specific multicast group. The IGMP leave response time can be configured from 100 to 32767 milliseconds.

## IGMP Report Suppression

IGMP report suppression is supported only when the multicast query has IGMPv1 and IGMPv2 reports. This feature is not supported when the query includes IGMPv3 reports.

The device uses IGMP report suppression to forward only one IGMP report per multicast router query to multicast devices. When IGMP report suppression is enabled (the default), the device sends the first IGMP report from all hosts for a group to all the multicast routers. The device does not send the remaining IGMP reports for the group to the multicast routers. This feature prevents duplicate reports from being sent to the multicast devices.

If the multicast router query includes requests only for IGMPv1 and IGMPv2 reports, the device forwards only the first IGMPv1 or IGMPv2 report from all hosts for a group to all the multicast routers.

If the multicast router query also includes requests for IGMPv3 reports, the device forwards all IGMPv1, IGMPv2, and IGMPv3 reports for a group to the multicast devices.

If you disable IGMP report suppression, all IGMP reports are forwarded to the multicast routers.

## IGMP Snooping and Device Stacks

IGMP snooping functions across the device stack; that is, IGMP control information from one device is distributed to all devices in the stack. Regardless of the stack member through which IGMP multicast data enters the stack, the data reaches the hosts that have registered for that group.

If a device in the stack fails or is removed from the stack, only the members of the multicast group that are on that device will not receive the multicast data. All other members of a multicast group on other devices in

the stack continue to receive multicast data streams. However, multicast groups that are common for both Layer 2 and Layer 3 (IP multicast routing) might take longer to converge if the active device is removed.

## IGMP Filtering and Throttling

In some environments, for example, metropolitan or multiple-dwelling unit (MDU) installations, you might want to control the set of multicast groups to which a user on a switch port can belong. You can control the distribution of multicast services, such as IP/TV, based on some type of subscription or service plan. You might also want to limit the number of multicast groups to which a user on a switch port can belong.

With the IGMP filtering feature, you can filter multicast joins on a per-port basis by configuring IP multicast profiles and associating them with individual switch ports. An IGMP profile can contain one or more multicast groups and specifies whether access to the group is permitted or denied. If an IGMP profile denying access to a multicast group is applied to a switch port, the IGMP join report requesting the stream of IP multicast traffic is dropped, and the port is not allowed to receive IP multicast traffic from that group. If the filtering action permits access to the multicast group, the IGMP report from the port is forwarded for normal processing. You can also set the maximum number of IGMP groups that a Layer 2 interface can join.

IGMP filtering controls only group-specific query and membership reports, including join and leave reports. It does not control general IGMP queries. IGMP filtering has no relationship with the function that directs the forwarding of IP multicast traffic. The filtering feature operates in the same manner whether CGMP or MVR is used to forward the multicast traffic.

IGMP filtering applies only to the dynamic learning of IP multicast group addresses, not static configuration.

With the IGMP throttling feature, you can set the maximum number of IGMP groups that a Layer 2 interface can join. If the maximum number of IGMP groups is set, the IGMP snooping forwarding table contains the maximum number of entries, and the interface receives an IGMP join report, you can configure an interface to drop the IGMP report or to replace the randomly selected multicast entry with the received IGMP report.



**Note** IGMPv3 join and leave messages are not supported on a device running IGMP filtering.

## Default IGMP Configuration

This table displays the default IGMP configuration for the device.

*Table 4: Default IGMP Configuration*

| Feature  | Default Setting                         |
|--|---|
| Multilayer device as a member of a multicast group | No group memberships are defined.       |
| Access to multicast groups                         | All groups are allowed on an interface. |
| IGMP version                                       | Version 2 on all interfaces.            |
| IGMP host-query message interval                   | 60 seconds on all interfaces.           |
| IGMP query timeout                                 | 60 seconds on all interfaces.           |
| IGMP maximum query response time                   | 10 seconds on all interfaces.           |

| Feature  | Default Setting |
|--|-----------------|
| Multilayer device as a statically connected member | Disabled.       |

## Default IGMP Snooping Configuration

This table displays the default IGMP snooping configuration for the device.

*Table 5: Default IGMP Snooping Configuration*

| Feature                            | Default Setting               |
|------------------------------------|-------------------------------|
| IGMP snooping                      | Enabled globally and per VLAN |
| Multicast routers                  | None configured               |
| IGMP snooping Immediate Leave      | Disabled                      |
| Static groups                      | None configured               |
| TCN <sup>1</sup> flood query count | 2                             |
| TCN query solicitation             | Disabled                      |
| IGMP snooping querier              | Disabled                      |
| IGMP report suppression            | Enabled                       |

<sup>1</sup> (1) TCN = Topology Change Notification

## Default IGMP Filtering and Throttling Configuration

This table displays the default IGMP filtering and throttling configuration for the device.

*Table 6: Default IGMP Filtering Configuration*

| Feature                            | Default Setting   |
|------------------------------------|---|
| IGMP filters                       | None applied.   |
| IGMP maximum number of IGMP groups | No maximum set.<br><b>Note</b> When the maximum number of groups is in the for table, the default IGMP throttling action is to deny report. |
| IGMP profiles                      | None defined.   |
| IGMP profile action                | Deny the range addresses.   |

# How to Configure IGMP

## Configuring the Device as a Member of a Group

You can configure the device as a member of a multicast group and discover multicast reachability in a network. If all the multicast-capable routers and multilayer devices that you administer are members of a multicast group, pinging that group causes all of these devices to respond. The devices respond to ICMP echo-request packets addressed to a group of which they are members. Another example is the multicast trace-route tools provided in the software.



**Caution** Performing this procedure might impact the CPU performance because the CPU will receive all data traffic for the group address.

This procedure is optional.

### SUMMARY STEPS

1. **enable**
2. **configure terminal**
3. **interface** *interface-id*
4. **ip igmp join-group** *group-address*
5. **end**
6. **show ip igmp interface** [*interface-id*]
7. **copy running-config startup-config**

### DETAILED STEPS

|        | Command or Action   | Purpose   |
|--------|---|---|
| Step 1 | <b>enable</b><br><b>Example:</b><br>Device> <b>enable</b>   | Enabled privileged EXEC mode. <ul style="list-style-type: none"> <li>• Enter your password if prompted.</li> </ul>  |
| Step 2 | <b>configure terminal</b><br><b>Example:</b><br>Device# <b>configure terminal</b>                                 | Enters global configuration mode.   |
| Step 3 | <b>interface</b> <i>interface-id</i><br><b>Example:</b><br>Device(config)# <b>interface</b> GigabitEthernet 1/0/1 | Specifies the Layer 3 interface on which you want to enable multicast routing, and enters interface configuration mode.<br><br>The specified interface must be one of the following: <ul style="list-style-type: none"> <li>• A routed port—A physical port that has been configured as a Layer 3 port by entering the <b>no switchport</b> interface configuration command.</li> </ul> |

|               | Command or Action   | Purpose  |
|---------------|---|--|
|               |   | <ul style="list-style-type: none"> <li>An SVI—A VLAN interface created by using the <b>interface vlan</b> <i>vlan-id</i> global configuration command.</li> </ul> <p>These interfaces must have IP addresses assigned to them.</p> |
| <b>Step 4</b> | <b>ip igmp join-group</b> <i>group-address</i><br><b>Example:</b><br><pre>Device(config-if)# ip igmp join-group 225.2.2.2</pre>             | <p>Configures the device to join a multicast group. By default, no group memberships are defined.</p> <p>For <i>group-address</i>, specify the multicast IP address in dotted decimal notation.</p>                                |
| <b>Step 5</b> | <b>end</b><br><b>Example:</b><br><pre>Device(config-if)# end</pre>  | Returns to privileged EXEC mode.   |
| <b>Step 6</b> | <b>show ip igmp interface</b> [ <i>interface-id</i> ]<br><b>Example:</b><br><pre>Device# show ip igmp interface GigabitEthernet 1/0/1</pre> | Verifies your entries.   |
| <b>Step 7</b> | <b>copy running-config startup-config</b><br><b>Example:</b><br><pre>Device# copy running-config startup-config</pre>                       | (Optional) Saves your entries in the configuration file.   |

## Changing the IGMP Version

By default, the switch uses IGMP Version 2, which provides features such as the IGMP query timeout and the maximum query response time.

All systems on the subnet must support the same version. The switch does not automatically detect Version 1 systems and switch to Version 1. You can mix Version 1 and Version 2 hosts on the subnet because Version 2 routers or switches always work correctly with IGMPv1 hosts.

Configure the switch for Version 1 if your hosts do not support Version 2.

This procedure is optional.

### SUMMARY STEPS

1. **enable**
2. **configure terminal**
3. **interface** *interface-id*
4. **ip igmp version** {1 | 2 | 3 }
5. **end**

6. `show ip igmp interface [interface-id]`
7. `copy running-config startup-config`

### DETAILED STEPS

|        | Command or Action   | Purpose  |
|--------|---|--|
| Step 1 | <b>enable</b><br><b>Example:</b><br>Device> <code>enable</code>   | Enabled privileged EXEC mode.<br><ul style="list-style-type: none"> <li>• Enter your password if prompted.</li> </ul>  |
| Step 2 | <b>configure terminal</b><br><b>Example:</b><br>Device# <code>configure terminal</code>                                 | Enters global configuration mode.  |
| Step 3 | <b>interface interface-id</b><br><b>Example:</b><br>Device(config)# <code>interface gigabitethernet 1/0/1</code>        | Specifies the interface to be configured, and enters the interface configuration mode.   |
| Step 4 | <b>ip igmp version {1   2   3 }</b><br><b>Example:</b><br>Device(config-if)# <code>ip igmp version 2</code>             | Specifies the IGMP version that the switch uses.<br><b>Note</b> If you change to Version 1, you cannot configure the <b>ip igmp query-interval</b> or the <b>ip igmp query-max-response-time</b> interface configuration commands.<br><br>To return to the default setting, use the <b>no ip igmp version</b> interface configuration command. |
| Step 5 | <b>end</b><br><b>Example:</b><br>Device(config-if)# <code>end</code>  | Returns to privileged EXEC mode.   |
| Step 6 | <b>show ip igmp interface [interface-id]</b><br><b>Example:</b><br>Device# <code>show ip igmp interface</code>          | Verifies your entries.   |
| Step 7 | <b>copy running-config startup-config</b><br><b>Example:</b><br>Device# <code>copy running-config startup-config</code> | (Optional) Saves your entries in the configuration file.   |

## Modifying the IGMP Host-Query Message Interval

The device periodically sends IGMP host-query messages to discover which multicast groups are present on attached networks. These messages are sent to the all-hosts multicast group (224.0.0.1) with a time-to-live (TTL) of 1. The device sends host-query messages to refresh its knowledge of memberships present on the network. If, after some number of queries, the software discovers that no local hosts are members of a multicast group, the software stops forwarding multicast packets to the local network from remote origins for that group and sends a prune message upstream toward the source.

The device elects a PIM designated router (DR) for the LAN (subnet). The designated router is responsible for sending IGMP host-query messages to all hosts on the LAN. In sparse mode, the designated router also sends PIM register and PIM join messages toward the RP router. With IGMPv2, the DR is the router or multilayer device with the highest IP address. With IGMPv1, the DR is elected according to the multicast routing protocol that runs on the LAN.

This procedure is optional.

### SUMMARY STEPS

1. **enable**
2. **configure terminal**
3. **interface** *interface-id*
4. **ip igmp query-interval** *seconds*
5. **end**
6. **show ip igmp interface** [*interface-id*]
7. **copy running-config startup-config**

### DETAILED STEPS

|               | Command or Action  | Purpose   |
|---------------|--|---|
| <b>Step 1</b> | <b>enable</b><br><b>Example:</b><br>Device> <b>enable</b>  | Enables privileged EXEC mode. <ul style="list-style-type: none"> <li>• Enter your password if prompted.</li> </ul>  |
| <b>Step 2</b> | <b>configure terminal</b><br><b>Example:</b><br>Device# <b>configure terminal</b>  | Enters global configuration mode.   |
| <b>Step 3</b> | <b>interface</b> <i>interface-id</i><br><b>Example:</b><br>Device(config)# <b>interface</b> <b>gigabitethernet</b> 1/0/1 | Specifies the Layer 3 interface on which you want to enable multicast routing, and enters interface configuration mode.<br><br>The specified interface must be one of the following: <ul style="list-style-type: none"> <li>• A routed port—A physical port that has been configured as a Layer 3 port by entering the <b>no switchport</b> interface configuration command.</li> </ul> |

|               | Command or Action  | Purpose  |
|---------------|--|--|
|               |  | <ul style="list-style-type: none"> <li>An SVI—A VLAN interface created by using the <b>interface vlan <i>vlan-id</i></b> global configuration command.</li> </ul> These interfaces must have IP addresses assigned to them.  |
| <b>Step 4</b> | <b>ip igmp query-interval <i>seconds</i></b><br><b>Example:</b><br>Device(config-if)# <b>ip igmp query-interval 75</b> | Configures the frequency at which the designated router sends IGMP host-query messages.<br>By default, the designated router sends IGMP host-query messages every 60 seconds to keep the IGMP overhead very low on hosts and networks.<br>The range is 1 to 65535. |
| <b>Step 5</b> | <b>end</b><br><b>Example:</b><br>Device(config)# <b>end</b>  | Returns to privileged EXEC mode.   |
| <b>Step 6</b> | <b>show ip igmp interface [<i>interface-id</i>]</b><br><b>Example:</b><br>Device# <b>show ip igmp interface</b>        | Displays   |
| <b>Step 7</b> | <b>copy running-config startup-config</b><br><b>Example:</b><br>Device# <b>copy running-config startup-config</b>      | (Optional) Saves your entries in the configuration file.   |

## Changing the Maximum Query Response Time for IGMPv2

If you are using IGMPv2, you can change the maximum query response time advertised in IGMP queries. The maximum query response time enables the device to quickly detect that there are no more directly connected group members on a LAN. Decreasing the value enables the device to prune groups faster.

This procedure is optional.

### SUMMARY STEPS

1. **enable**
2. **configure terminal**
3. **interface *interface-id***
4. **ip igmp query-max-response-time *seconds***
5. **end**
6. **show ip igmp interface [*interface-id*]**
7. **copy running-config startup-config**

## DETAILED STEPS

|               | Command or Action   | Purpose  |
|---------------|---|--|
| <b>Step 1</b> | <b>enable</b><br><b>Example:</b><br>Device> <b>enable</b>   | Enabled privileged EXEC mode.<br><ul style="list-style-type: none"><li>• Enter your password if prompted.</li></ul>  |
| <b>Step 2</b> | <b>configure terminal</b><br><b>Example:</b><br>Device# <b>configure terminal</b>   | Enters global configuration mode.  |
| <b>Step 3</b> | <b>interface interface-id</b><br><b>Example:</b><br>Device(config)# <b>interface GigabitEthernet 1/0/1</b>                        | Specifies the Layer 3 interface on which you want to enable multicast routing, and enters interface configuration mode.<br><br>The specified interface must be one of the following:<br><ul style="list-style-type: none"><li>• A routed port—A physical port that has been configured as a Layer 3 port by entering the <b>no switchport</b> interface configuration command.</li><li>• An SVI—A VLAN interface created by using the <b>interface vlan vlan-id</b> global configuration command.</li></ul><br>These interfaces must have IP addresses assigned to them. |
| <b>Step 4</b> | <b>ip igmp query-max-response-time seconds</b><br><b>Example:</b><br>Device(config-if)# <b>ip igmp query-max-response-time 15</b> | Changes the maximum query response time advertised in IGMP queries.<br><br>The default is 10 seconds. The range is 1 to 25.  |
| <b>Step 5</b> | <b>end</b><br><b>Example:</b><br>Device(config-if)# <b>end</b>  | Returns to privileged EXEC mode.   |
| <b>Step 6</b> | <b>show ip igmp interface [interface-id]</b><br><b>Example:</b><br>Device# <b>show ip igmp interface</b>                          | Verifies your entries.   |
| <b>Step 7</b> | <b>copy running-config startup-config</b><br><b>Example:</b><br>Device# <b>copy running-config startup-config</b>                 | (Optional) Saves your entries in the configuration file.   |

## Configuring the Device as a Statically Connected Member

At various times, either there is not a group member on a network segment or a host that cannot report its group membership by using IGMP. However, you may want multicast traffic to be sent to that network segment. The following commands are used to pull multicast traffic down to a network segment:

- **ip igmp join-group**—The device accepts the multicast packets in addition to forwarding them. Accepting the multicast packets prevents the device from fast switching.
- **ip igmp static-group**—The device does not accept the packets itself, but only forwards them. This method enables fast switching. The outgoing interface appears in the IGMP cache, but the device itself is not a member, as evidenced by lack of an L (local) flag in the multicast route entry.

This procedure is optional.

### SUMMARY STEPS

1. **enable**
2. **configure terminal**
3. **interface** *interface-id*
4. **ip igmp static-group** *group-address*
5. **end**
6. **show ip igmp interface** [*interface-id*]
7. **copy running-config startup-config**

### DETAILED STEPS

|        | Command or Action   | Purpose  |
|--------|---|--|
| Step 1 | <b>enable</b><br><b>Example:</b><br>Device> <b>enable</b>   | Enabled privileged EXEC mode.<br><br>• Enter your password if prompted.  |
| Step 2 | <b>configure terminal</b><br><b>Example:</b><br>Device# <b>configure terminal</b>                                 | Enters global configuration mode.  |
| Step 3 | <b>interface</b> <i>interface-id</i><br><b>Example:</b><br>Device(config)# <b>interface</b> GigabitEthernet 1/0/1 | Specifies the Layer 3 interface on which you want to enable multicast routing, and enters interface configuration mode.<br><br>The specified interface must be one of the following: <ul style="list-style-type: none"> <li>• A routed port—A physical port that has been configured as a Layer 3 port by entering the <b>no switchport</b> interface configuration command.</li> <li>• An SVI—A VLAN interface created by using the <b>interface vlan</b> <i>vlan-id</i> global configuration command.</li> </ul> These interfaces must have IP addresses assigned to them. |

|               | Command or Action   | Purpose  |
|---------------|---|--|
| <b>Step 4</b> | <b>ip igmp static-group</b> <i>group-address</i><br><b>Example:</b><br><pre>Device(config-if)# ip igmp static-group 239.100.100.101</pre>   | Configures the device as a statically connected member of a group. By default, this feature is disabled. |
| <b>Step 5</b> | <b>end</b><br><b>Example:</b><br><pre>Device(config-if)# end</pre>  | Returns to privileged EXEC mode.   |
| <b>Step 6</b> | <b>show ip igmp interface</b> [ <i>interface-id</i> ]<br><b>Example:</b><br><pre>Device# show ip igmp interface GigabitEthernet 1/0/1</pre> | Verifies your entries.   |
| <b>Step 7</b> | <b>copy running-config startup-config</b><br><b>Example:</b><br><pre>Device# copy running-config startup-config</pre>                       | (Optional) Saves your entries in the configuration file.   |

## Configuring IGMP Profiles

Follow these steps to create an IGMP profile:

This task is optional.

### SUMMARY STEPS

1. **enable**
2. **configure terminal**
3. **ip igmp profile** *profile number*
4. **permit | deny**
5. **range ip** *multicast address*
6. **end**
7. **show ip igmp profile** *profile number*
8. **show running-config**
9. **copy running-config startup-config**

## DETAILED STEPS

|        | Command or Action   | Purpose  |
|--------|---|--|
| Step 1 | <b>enable</b><br><b>Example:</b><br>Device> <b>enable</b>   | Enabled privileged EXEC mode. <ul style="list-style-type: none"> <li>• Enter your password if prompted.</li> </ul>   |
| Step 2 | <b>configure terminal</b><br><b>Example:</b><br>Device# <b>configure terminal</b>                           | Enters global configuration mode.  |
| Step 3 | <b>ip igmp profile profile number</b><br><b>Example:</b><br>Device(config)# <b>ip igmp profile 3</b>        | Assigns a number to the profile you are configuring, and enters IGMP profile configuration mode. The profile number range is 1 to 4294967295. When you are in IGMP profile configuration mode, you can create the profile by using these commands: <ul style="list-style-type: none"> <li>• <b>deny</b>—Specifies that matching addresses are denied; this is the default.</li> <li>• <b>exit</b>—Exits from igmp-profile configuration mode.</li> <li>• <b>no</b>—Negates a command or returns to its defaults.</li> <li>• <b>permit</b>—Specifies that matching addresses are permitted.</li> <li>• <b>range</b>—Specifies a range of IP addresses for the profile. You can enter a single IP address or a range with a start and an end address.</li> </ul> The default for the device is to have no IGMP profiles configured.<br><b>Note</b> To delete a profile, use the <b>no ip igmp profile profile number</b> global configuration command. |
| Step 4 | <b>permit   deny</b><br><b>Example:</b><br>Device(config-igmp-profile)# <b>permit</b>                       | (Optional) Sets the action to permit or deny access to the IP multicast address. If no action is configured, the default for the profile is to deny access.  |
| Step 5 | <b>range ip multicast address</b><br><b>Example:</b><br>Device(config-igmp-profile)# <b>range 229.9.9.0</b> | Enters the IP multicast address or range of IP multicast addresses to which access is being controlled. If entering a range, enter the low IP multicast address, a space, and the high IP multicast address.<br>You can use the <b>range</b> command multiple times to enter multiple addresses or ranges of addresses.  |

|               | Command or Action   | Purpose  |
|---------------|---|--|
|               |   | <b>Note</b> To delete an IP multicast address or range of IP multicast addresses, use the <b>no range ip multicast address</b> IGMP profile configuration command. |
| <b>Step 6</b> | <b>end</b><br><b>Example:</b><br><br>Device(config-if)# <b>end</b>  | Returns to privileged EXEC mode.   |
| <b>Step 7</b> | <b>show ip igmp profile</b> <i>profile number</i><br><b>Example:</b><br><br>Device# <b>show ip igmp profile 3</b>     | Verifies the profile configuration.  |
| <b>Step 8</b> | <b>show running-config</b><br><b>Example:</b><br><br>Device# <b>show running-config</b>                               | Verifies your entries.   |
| <b>Step 9</b> | <b>copy running-config startup-config</b><br><b>Example:</b><br><br>Device# <b>copy running-config startup-config</b> | (Optional) Saves your entries in the configuration file.   |

## Applying IGMP Profiles

To control access as defined in an IGMP profile, you have to apply the profile to the appropriate interfaces. You can apply IGMP profiles only to Layer 2 access ports; you cannot apply IGMP profiles to routed ports or SVIs. You cannot apply profiles to ports that belong to an EtherChannel port group. You can apply a profile to multiple interfaces, but each interface can have only one profile applied to it.

Follow these steps to apply an IGMP profile to a switch port:

### SUMMARY STEPS

1. **enable**
2. **configure terminal**
3. **interface** *interface-id*
4. **ip igmp filter** *profile number*
5. **end**
6. **show running-config**
7. **copy running-config startup-config**

## DETAILED STEPS

|        | Command or Action   | Purpose   |
|--------|---|---|
| Step 1 | <b>enable</b><br><b>Example:</b><br>Device> <b>enable</b>   | Enabled privileged EXEC mode.<br><ul style="list-style-type: none"><li>• Enter your password if prompted.</li></ul>   |
| Step 2 | <b>configure terminal</b><br><b>Example:</b><br>Device# <b>configure terminal</b>                                 | Enters global configuration mode.   |
| Step 3 | <b>interface interface-id</b><br><b>Example:</b><br>Device(config)# <b>interface GigabitEthernet 1/0/1</b>        | Specifies the physical interface, and enters interface configuration mode. The interface must be a Layer 2 port that does not belong to an EtherChannel port group.   |
| Step 4 | <b>ip igmp filter profile number</b><br><b>Example:</b><br>Device(config-if)# <b>ip igmp filter 321</b>           | Applies the specified IGMP profile to the interface. The range is 1 to 4294967295.<br><b>Note</b> To remove a profile from an interface, use the <b>no ip igmp filter profile number</b> interface configuration command. |
| Step 5 | <b>end</b><br><b>Example:</b><br>Device(config-if)# <b>end</b>  | Returns to privileged EXEC mode.  |
| Step 6 | <b>show running-config</b><br><b>Example:</b><br>Device# <b>show running-config</b>                               | Verifies your entries.  |
| Step 7 | <b>copy running-config startup-config</b><br><b>Example:</b><br>Device# <b>copy running-config startup-config</b> | (Optional) Saves your entries in the configuration file.  |

## Setting the Maximum Number of IGMP Groups

Follow these steps to set the maximum number of IGMP groups that a Layer 2 interface can join:

### Before you begin

This restriction can be applied to Layer 2 ports only; you cannot set a maximum number of IGMP groups on routed ports or SVIs. You also can use this command on a logical EtherChannel interface but cannot use it on ports that belong to an EtherChannel port group.

## SUMMARY STEPS

1. **enable**
2. **configure terminal**
3. **interface** *interface-id*
4. **ip igmp max-groups** *number*
5. **end**
6. **show running-config interface** *interface-id*
7. **copy running-config startup-config**

## DETAILED STEPS

|               | Command or Action  | Purpose   |
|---------------|--|---|
| <b>Step 1</b> | <b>enable</b><br><b>Example:</b><br>Device> <b>enable</b>  | Enables privileged EXEC mode. <ul style="list-style-type: none"> <li>• Enter your password if prompted.</li> </ul>  |
| <b>Step 2</b> | <b>configure terminal</b><br><b>Example:</b><br>Device# <b>configure terminal</b>  | Enters global configuration mode.   |
| <b>Step 3</b> | <b>interface</b> <i>interface-id</i><br><b>Example:</b><br>Device(config)# <b>interface</b> <b>gigabitethernet1/0/2</b>                                    | Specifies the interface to be configured, and enters interface configuration mode. The interface can be a Layer 2 port that does not belong to an EtherChannel group or a EtherChannel interface. |
| <b>Step 4</b> | <b>ip igmp max-groups</b> <i>number</i><br><b>Example:</b><br>Device(config-if)# <b>ip igmp max-groups 20</b>  | Sets the maximum number of IGMP groups that the interface can join. The range is 0 to 4294967294. The default is to have no maximum set.  |
| <b>Step 5</b> | <b>end</b><br><b>Example:</b><br>Device(config)# <b>end</b>  | Returns to privileged EXEC mode.  |
| <b>Step 6</b> | <b>show running-config interface</b> <i>interface-id</i><br><b>Example:</b><br>Device# <b>show running-config interface</b><br><b>gigabitethernet1/0/1</b> | Verifies your entries.  |

|        | Command or Action   | Purpose  |
|--------|---|--|
| Step 7 | <b>copy running-config startup-config</b><br><b>Example:</b><br><pre>Device# copy running-config startup-config</pre> | (Optional) Saves your entries in the configuration file. |

## Configuring the IGMP Throttling Action

After you set the maximum number of IGMP groups that a Layer 2 interface can join, you can configure an interface to replace the existing group with the new group for which the IGMP report was received.

Follow these steps to configure the throttling action when the maximum number of entries is in the forwarding table:

### SUMMARY STEPS

1. **enable**
2. **configure terminal**
3. **interface *interface-id***
4. **ip igmp max-groups action {deny | replace}**
5. **end**
6. **show running-config interface *interface-id***
7. **copy running-config startup-config**

### DETAILED STEPS

|        | Command or Action   | Purpose   |
|--------|---|---|
| Step 1 | <b>enable</b><br><b>Example:</b><br><pre>Device&gt; enable</pre>  | Enabled privileged EXEC mode. <ul style="list-style-type: none"> <li>• Enter your password if prompted.</li> </ul>  |
| Step 2 | <b>configure terminal</b><br><b>Example:</b><br><pre>Device# configure terminal</pre>   | Enters global configuration mode.   |
| Step 3 | <b>interface <i>interface-id</i></b><br><b>Example:</b><br><pre>Device(config)# interface gigabitethernet1/0/1</pre>            | Specifies the physical interface to be configured, and enters interface configuration mode. The interface can be a Layer 2 port that does not belong to an EtherChannel group or an EtherChannel interface. The interface cannot be a trunk port.   |
| Step 4 | <b>ip igmp max-groups action {deny   replace}</b><br><b>Example:</b><br><pre>Device(config-if)# ip igmp max-groups action</pre> | When an interface receives an IGMP report and the maximum number of entries is in the forwarding table, specifies the action that the interface takes: <ul style="list-style-type: none"> <li>• <b>deny</b>—Drops the report. If you configure this throttling action, the entries that were previously in the</li> </ul> |

|               | Command or Action  | Purpose  |
|---------------|--|--|
|               | <pre>replace</pre>   | <p>forwarding table are not removed but are aged out. After these entries are aged out and the maximum number of entries is in the forwarding table, the device drops the next IGMP report received on the interface.</p> <ul style="list-style-type: none"> <li>• <b>replace</b>—Replaces the existing group with the new group for which the IGMP report was received. If you configure this throttling action, the entries that were previously in the forwarding table are removed. When the maximum number of entries is in the forwarding table, the device replaces a randomly selected entry with the received IGMP report.</li> </ul> <p>To prevent the device from removing the forwarding-table entries, you can configure the IGMP throttling action before an interface adds entries to the forwarding table.</p> <p><b>Note</b> To return to the default action of dropping the report, use the <b>no ip igmp max-groups action</b> interface configuration command.</p> |
| <b>Step 5</b> | <pre>end</pre> <p><b>Example:</b></p> <pre>Device(config-if)# end</pre>  | Returns to privileged EXEC mode.   |
| <b>Step 6</b> | <pre>show running-config interface interface-id</pre> <p><b>Example:</b></p> <pre>Device# show running-config interface gigabitethernet1/0/1</pre> | Verifies your entries.   |
| <b>Step 7</b> | <pre>copy running-config startup-config</pre> <p><b>Example:</b></p> <pre>Device# copy running-config startup-config</pre>                         | (Optional) Saves your entries in the configuration file.   |

## Configuring the Device to Forward Multicast Traffic in the Absence of Directly Connected IGMP Hosts

Perform this optional task to configure the device to forward multicast traffic in the absence of directly connected IGMP hosts.

### SUMMARY STEPS

1. enable

2. **configure terminal**
3. **interface** *type number*
4. Do one of the following:
  - **ip igmp join-group** *group-address*
  - **ip igmp static-group** *{\* | group-address [source source-address]}*
5. **end**
6. **show ip igmp interface** [*interface-type interface-number*]

## DETAILED STEPS

|               | Command or Action  | Purpose   |
|---------------|--|---|
| <b>Step 1</b> | <b>enable</b><br><b>Example:</b><br>Device> enable   | Enables privileged EXEC mode. <ul style="list-style-type: none"> <li>• Enter your password if prompted.</li> </ul>  |
| <b>Step 2</b> | <b>configure terminal</b><br><b>Example:</b><br>Device# configure terminal   | Enters global configuration mode.   |
| <b>Step 3</b> | <b>interface</b> <i>type number</i><br><b>Example:</b><br>Device(config)# interface gigabitethernet 1/0/1  | Enters interface configuration mode. <ul style="list-style-type: none"> <li>• For the <i>type</i> and <i>number</i> arguments, specify an interface that is connected to hosts.</li> </ul>  |
| <b>Step 4</b> | Do one of the following: <ul style="list-style-type: none"> <li>• <b>ip igmp join-group</b> <i>group-address</i></li> <li>• <b>ip igmp static-group</b> <i>{*   group-address [source source-address]}</i></li> </ul> <b>Example:</b><br>Device(config-if)# ip igmp join-group 225.2.2.2<br><b>Example:</b><br>Device(config-if)# ip igmp static-group 225.2.2.2 | The first sample shows how to configure an interface on the device to join the specified group.<br>With this method, the device accepts the multicast packets in addition to forwarding them. Accepting the multicast packets prevents the device from fast switching.<br>The second example shows how to configure static group membership entries on an interface. With this method, the device does not accept the packets itself, but only forwards them. Hence, this method allows fast switching. The outgoing interface appears in the IGMP cache, but the device itself is not a member, as evidenced by lack of an “L” (local) flag in the multicast route entry |
| <b>Step 5</b> | <b>end</b><br><b>Example:</b><br>Device#(config-if)# end   | Returns to privileged EXEC mode.  |
| <b>Step 6</b> | <b>show ip igmp interface</b> [ <i>interface-type interface-number</i> ]<br><b>Example:</b>  | (Optional) Displays multicast-related information about an interface.   |

|  | Command or Action              | Purpose |
|--|--------------------------------|---------|
|  | Device# show ip igmp interface |         |

## Controlling Access to an SSM Network Using IGMP Extended Access Lists

Perform this optional task to control access to an SSM network by using an IGMP extended access list that filters SSM traffic based on source address, group address, or both.

### SUMMARY STEPS

1. **enable**
2. **configure terminal**
3. **ip multicast-routing [distributed]**
4. **ip pim ssm {default | range access-list}**
5. **ip access-list extended access-list-name**
6. **deny igmp source source-wildcard destination destination-wildcard [igmp-type] [precedence precedence] [tos tos] [log] [time-range time-range-name] [fragments]**
7. **permit igmp source source-wildcard destination destination-wildcard [igmp-type] [precedence precedence] [tos tos] [log] [time-range time-range-name] [fragments]**
8. **exit**
9. interface type number
10. **ip igmp access-group access-list**
11. **ip pim sparse-mode**
12. Repeat Steps 1 through 11 on all interfaces that require access control of SSM channel membership.
13. **ip igmp version 3**
14. Repeat Step 13 on all host-facing interfaces.
15. **end**

### DETAILED STEPS

|               | Command or Action  | Purpose   |
|---------------|--|---|
| <b>Step 1</b> | <b>enable</b><br><b>Example:</b><br>Device> enable   | Enables privileged EXEC mode. <ul style="list-style-type: none"> <li>• Enter your password if prompted.</li> </ul>                                |
| <b>Step 2</b> | <b>configure terminal</b><br><b>Example:</b><br>Device# configure terminal                                       | Enters global configuration mode.   |
| <b>Step 3</b> | <b>ip multicast-routing [distributed]</b><br><b>Example:</b><br>Device(config)# ip multicast-routing distributed | Enables IP multicast routing. <ul style="list-style-type: none"> <li>• The <b>distributed</b> keyword is required for IPv4 multicast..</li> </ul> |

|               | Command or Action  | Purpose  |
|---------------|--|--|
| <b>Step 4</b> | <p><b>ip pim ssm</b> {<b>default</b>   <b>range</b> <i>access-list</i>}</p> <p><b>Example:</b></p> <pre>Device(config)# ip pim ssm default</pre>   | <p>Configures SSM service.</p> <ul style="list-style-type: none"> <li>• The <b>default</b> keyword defines the SSM range access list as 232/8.</li> <li>• The <b>range</b> keyword specifies the standard IP access list number or name that defines the SSM range.</li> </ul>   |
| <b>Step 5</b> | <p><b>ip access-list extended</b> <i>access-list -name</i></p> <p><b>Example:</b></p> <pre>Device(config)# ip access-list extended mygroup</pre>   | <p>Specifies an extended named IP access list.</p>   |
| <b>Step 6</b> | <p><b>deny igmp</b> <i>source source-wildcard destination destination-wildcard [igmp-type] [precedence precedence] [tos tos] [log] [time-range time-range-name] [fragments]</i></p> <p><b>Example:</b></p> <pre>Device(config-ext-nacl)# deny igmp host 10.1.2.3 any</pre> | <p>(Optional) Filters the specified source address or group address from the IGMP report, thereby restricting hosts on a subnet from membership to the (S, G) channel.</p> <ul style="list-style-type: none"> <li>• Repeat this step to restrict hosts on a subnet membership to other (S, G) channels. (These sources should be more specific than a subsequent <b>permit</b> statement because any sources or groups not specifically permitted are denied.)</li> <li>• Remember that the access list ends in an implicit <b>deny</b> statement.</li> <li>• This example shows how to create a deny statement that filters all groups for source 10.1.2.3, which effectively denies the source.</li> </ul> |
| <b>Step 7</b> | <p><b>permit igmp</b> <i>source source-wildcard destination destination-wildcard [igmp-type] [precedence precedence] [tos tos] [log] [time-range time-range-name] [fragments]</i></p> <p><b>Example:</b></p> <pre>Device(config-ext-nacl)# permit igmp any any</pre>       | <p>Allows a source address or group address in an IGMP report to pass the IP access list.</p> <ul style="list-style-type: none"> <li>• You must have at least one <b>permit</b> statement in an access list.</li> <li>• Repeat this step to allow other sources to pass the IP access list.</li> <li>• This example shows how to allow group membership to sources and groups not denied by prior <b>deny</b> statements.</li> </ul>   |
| <b>Step 8</b> | <p><b>exit</b></p> <p><b>Example:</b></p> <pre>Device(config-ext-nacl)# exit</pre>   | <p>Exits the current configuration session and returns to global configuration mode.</p>   |
| <b>Step 9</b> | <p>interface type number</p> <p><b>Example:</b></p>  | <p>Selects an interface that is connected to hosts on which IGMPv3 can be enabled.</p>   |

|                | Command or Action  | Purpose  |
|----------------|--|--|
|                | Device(config)# interface ethernet 0   |  |
| <b>Step 10</b> | <b>ip igmp access-group</b> <i>access-list</i><br><b>Example:</b><br>Device(config-if)# ip igmp access-group mygroup | Applies the specified access list to IGMP reports.   |
| <b>Step 11</b> | <b>ip pim sparse-mode</b><br><b>Example:</b><br>Device(config-if)# ip pim sparse-mode                                | Enables PIM-SM on the interface.<br><b>Note</b> You must use sparse mode.                                      |
| <b>Step 12</b> | Repeat Steps 1 through 11 on all interfaces that require access control of SSM channel membership.                   | --   |
| <b>Step 13</b> | <b>ip igmp version 3</b><br><b>Example:</b><br>Device(config-if)# ip igmp version 3                                  | Enables IGMPv3 on this interface. The default version of IGMP is IGMP version 2. Version 3 is required by SSM. |
| <b>Step 14</b> | Repeat Step 13 on all host-facing interfaces.  | --   |
| <b>Step 15</b> | <b>end</b><br><b>Example:</b><br>Device(config-if)# end  | Returns to privileged EXEC mode.   |

# How to Configure IGMP Snooping

## Enabling IGMP Snooping

### SUMMARY STEPS

1. enable
2. configure terminal
3. ip igmp snooping
4. bridge-domain *bridge-id*
5. ip igmp snooping
6. end

### DETAILED STEPS

|               | Command or Action | Purpose                       |
|---------------|-------------------|-------------------------------|
| <b>Step 1</b> | enable            | Enables privileged EXEC mode. |

|               | Command or Action   | Purpose   |
|---------------|---|---|
|               | <b>Example:</b><br>Device> enable   | <ul style="list-style-type: none"> <li>Enter your password if prompted.</li> </ul>  |
| <b>Step 2</b> | <b>configure terminal</b><br><b>Example:</b><br>Device# configure terminal                    | Enters global configuration mode.   |
| <b>Step 3</b> | <b>ip igmp snooping</b><br><b>Example:</b><br>Device(config)# ip igmp snooping                | Globally enables IGMP snooping after it has been disabled.  |
| <b>Step 4</b> | <b>bridge-domain <i>bridge-id</i></b><br><b>Example:</b><br>Device(config)# bridge-domain 100 | (Optional) Enters bridge domain configuration mode.   |
| <b>Step 5</b> | <b>ip igmp snooping</b><br><b>Example:</b><br>Device(config-bdomain)# ip igmp snooping        | (Optional) Enables IGMP snooping on the bridge domain interface being configured. <ul style="list-style-type: none"> <li>Required only if IGMP snooping was previously explicitly disabled on the specified bridge domain.</li> </ul> |
| <b>Step 6</b> | <b>end</b><br><b>Example:</b><br>Device(config-bdomain)# end                                  | Returns to privileged EXEC mode.  |

## Enabling or Disabling IGMP Snooping on a VLAN Interface

Follow these steps to enable IGMP snooping on a VLAN interface:

### SUMMARY STEPS

1. enable
2. configure terminal
3. ip igmp snooping vlan *vlan-id*
4. end
5. copy running-config startup-config

### DETAILED STEPS

|               | Command or Action                                  | Purpose  |
|---------------|--|--|
| <b>Step 1</b> | <b>enable</b><br><b>Example:</b><br>Device> enable | Enables privileged EXEC mode. <ul style="list-style-type: none"> <li>Enter your password if prompted.</li> </ul> |

|               | Command or Action   | Purpose  |
|---------------|---|--|
| <b>Step 2</b> | <b>configure terminal</b><br><b>Example:</b><br>Device# <code>configure terminal</code>                                 | Enters global configuration mode.  |
| <b>Step 3</b> | <b>ip igmp snooping vlan <i>vlan-id</i></b><br><b>Example:</b><br>Device(config)# <code>ip igmp snooping vlan 7</code>  | Enables IGMP snooping on the VLAN interface. The VLAN ID range is 1 to 1001 and 1006 to 4094.<br><br>IGMP snooping must be globally enabled before you can enable VLAN snooping.<br><br><b>Note</b> To disable IGMP snooping on a VLAN interface, use the <b>no ip igmp snooping vlan <i>vlan-id</i></b> global configuration command for the specified VLAN number. |
| <b>Step 4</b> | <b>end</b><br><b>Example:</b><br>Device(config)# <code>end</code>   | Returns to privileged EXEC mode.   |
| <b>Step 5</b> | <b>copy running-config startup-config</b><br><b>Example:</b><br>Device# <code>copy running-config startup-config</code> | (Optional) Saves your entries in the configuration file.   |

## Setting the Snooping Method

Multicast-capable router ports are added to the forwarding table for every Layer 2 multicast entry. The device learns of the ports through one of these methods:

- Snooping on IGMP queries, Protocol-Independent Multicast (PIM) packets
- Statically connecting to a multicast router port using the **ip igmp snooping mrouter** global configuration command

Beginning in privileged EXEC mode, follow these steps to alter the method in which a VLAN interface accesses a multicast router:

### SUMMARY STEPS

1. **enable**
2. **configure terminal**
3. **ip igmp snooping vlan *vlan-id* mrouter interface {GigabitEthernet | Port-Channel | TenGigabitEthernet}**
4. **end**

5. `show ip igmp snooping`
6. `copy running-config startup-config`

### DETAILED STEPS

|        | Command or Action   | Purpose   |
|--------|---|---|
| Step 1 | <b>enable</b><br><b>Example:</b><br>Device> <code>enable</code>   | Enables privileged EXEC mode. Enter your password, if prompted.                   |
| Step 2 | <b>configure terminal</b><br><b>Example:</b><br>Device# <code>configure terminal</code>   | Enters global configuration mode.   |
| Step 3 | <b>ip igmp snooping vlan <i>vlan-id</i> mrouter interface {GigabitEthernet   Port-Channel   TenGigabitEthernet}</b><br><b>Example:</b><br>Device(config)# <code>ip igmp snooping<br/>vlan 1 mrouter interface GigabitEthernet1/0/3</code> | Enables IGMP snooping on a VLAN. The VLAN ID range is 1 to 1001 and 1006 to 4094. |
| Step 4 | <b>end</b><br><b>Example:</b><br>Device(config)# <code>end</code>   | Returns to privileged EXEC mode.  |
| Step 5 | <b>show ip igmp snooping</b><br><b>Example:</b><br>Device# <code>show ip igmp snooping</code>   | Verifies the configuration.   |
| Step 6 | <b>copy running-config startup-config</b><br><b>Example:</b><br>Device# <code>copy running-config startup-config</code>   | (Optional) Saves your entries in the configuration file.                          |

## Configuring a Multicast Router Port

Perform these steps to add a multicast router port (enable a static connection to a multicast router) on the device.



**Note** Static connections to multicast routers are supported only on device ports.

## SUMMARY STEPS

1. **enable**
2. **configure terminal**
3. **ip igmp snooping vlan *vlan-id* mrouter interface *interface-id***
4. **end**
5. **show ip igmp snooping mrouter [*vlan vlan-id*]**
6. **copy running-config startup-config**

## DETAILED STEPS

|               | Command or Action  | Purpose   |
|---------------|--|---|
| <b>Step 1</b> | <b>enable</b><br><b>Example:</b><br>Device> <b>enable</b>  | Enabled privileged EXEC mode. <ul style="list-style-type: none"> <li>• Enter your password if prompted.</li> </ul>  |
| <b>Step 2</b> | <b>configure terminal</b><br><b>Example:</b><br>Device# <b>configure terminal</b>  | Enters global configuration mode.   |
| <b>Step 3</b> | <b>ip igmp snooping vlan <i>vlan-id</i> mrouter interface <i>interface-id</i></b><br><b>Example:</b><br>Device(config)# <b>ip igmp snooping vlan 5 mrouter interface GigabitEthernet 1/0/1</b> | Specifies the multicast router VLAN ID and the interface to the multicast router. <ul style="list-style-type: none"> <li>• The VLAN ID range is 1 to 1001 and 1006 to 4094.</li> <li>• The interface can be a physical interface or a port channel. The port-channel range is 1 to 128.</li> </ul> <p><b>Note</b> To remove a multicast router port from the VLAN, use the <b>no ip igmp snooping vlan <i>vlan-id</i> mrouter interface <i>interface-id</i></b> global configuration command.</p> |
| <b>Step 4</b> | <b>end</b><br><b>Example:</b><br>Device(config-if)# <b>end</b>   | Returns to privileged EXEC mode.  |
| <b>Step 5</b> | <b>show ip igmp snooping mrouter [<i>vlan vlan-id</i>]</b><br><b>Example:</b><br>Device# <b>show ip igmp snooping mrouter vlan 5</b>   | Verifies that IGMP snooping is enabled on the VLAN interface.   |

|        | Command or Action   | Purpose  |
|--------|---|--|
| Step 6 | <b>copy running-config startup-config</b><br><b>Example:</b><br>Device# <code>copy running-config startup-config</code> | (Optional) Saves your entries in the configuration file. |

## Configuring a Host Statically to Join a Group

Hosts or Layer 2 ports normally join multicast groups dynamically, but you can also statically configure a host on an interface.

Follow these steps to add a Layer 2 port as a member of a multicast group:

### SUMMARY STEPS

1. `enable`
2. `configure terminal`
3. `ip igmp snooping vlan vlan-id static ip_address interface interface-id`
4. `end`
5. `show ip igmp snooping groups`
6. `copy running-config startup-config`

### DETAILED STEPS

|        | Command or Action   | Purpose   |
|--------|---|---|
| Step 1 | <b>enable</b><br><b>Example:</b><br>Device> <code>enable</code>   | Enabled privileged EXEC mode. <ul style="list-style-type: none"> <li>• Enter your password if prompted.</li> </ul>  |
| Step 2 | <b>configure terminal</b><br><b>Example:</b><br>Device# <code>configure terminal</code>   | Enters global configuration mode.   |
| Step 3 | <b>ip igmp snooping vlan <i>vlan-id</i> static <i>ip_address</i> interface <i>interface-id</i></b><br><b>Example:</b><br>Device(config)# <code>ip igmp snooping vlan 105 static 230.0.0.1 interface gigabitethernet1/0/1</code> | Statically configures a Layer 2 port as a member of a multicast group: <ul style="list-style-type: none"> <li>• <i>vlan-id</i> is the multicast group VLAN ID. The range is 1 to 1001 and 1006 to 4094.</li> <li>• <i>ip_address</i> is the group IP address.</li> <li>• <i>interface-id</i> is the member port. It can be a physical interface or a port channel (1 to 128).</li> </ul> <p><b>Note</b> To remove the Layer 2 port from the multicast group, use the <b>no ip igmp snooping vlan <i>vlan-id</i> static <i>mac-address</i> interface <i>interface-id</i></b> global configuration command.</p> |

|               | Command or Action   | Purpose  |
|---------------|---|--|
| <b>Step 4</b> | <b>end</b><br><b>Example:</b><br><br>Device(config-if)# <b>end</b>  | Returns to privileged EXEC mode.                         |
| <b>Step 5</b> | <b>show ip igmp snooping groups</b><br><b>Example:</b><br><br>Device# <b>show ip igmp snooping groups</b>             | Verifies the member port and the IP address.             |
| <b>Step 6</b> | <b>copy running-config startup-config</b><br><b>Example:</b><br><br>Device# <b>copy running-config startup-config</b> | (Optional) Saves your entries in the configuration file. |

## Enabling IGMP Immediate Leave

When you enable IGMP Immediate Leave, the device immediately removes a port when it detects an IGMP Version 2 leave message on that port. You should use the Immediate-Leave feature only when there is a single receiver present on every port in the VLAN.



**Note** Immediate Leave is supported only on IGMP Version 2 hosts. IGMP Version 2 is the default version for the device.

### SUMMARY STEPS

1. **enable**
2. **configure terminal**
3. **ip igmp snooping vlan *vlan-id* immediate-leave**
4. **end**
5. **show ip igmp snooping vlan *vlan-id***
6. **end**

### DETAILED STEPS

|               | Command or Action   | Purpose  |
|---------------|---|--|
| <b>Step 1</b> | <b>enable</b><br><b>Example:</b><br><br>Device> <b>enable</b> | Enables privileged EXEC mode. <ul style="list-style-type: none"> <li>• Enter your password if prompted.</li> </ul> |

|        | Command or Action   | Purpose  |
|--------|---|--|
| Step 2 | <b>configure terminal</b><br><b>Example:</b><br>Device# <code>configure terminal</code>   | Enters global configuration mode.  |
| Step 3 | <b>ip igmp snooping vlan <i>vlan-id</i> immediate-leave</b><br><b>Example:</b><br>Device(config)# <code>ip igmp snooping vlan 21 immediate-leave</code> | Enables IGMP Immediate Leave on the VLAN interface.<br><b>Note</b> To disable IGMP Immediate Leave on a VLAN, use the <b>no ip igmp snooping vlan <i>vlan-id</i> immediate-leave</b> global configuration command. |
| Step 4 | <b>end</b><br><b>Example:</b><br>Device(config)# <code>end</code>   | Returns to privileged EXEC mode.   |
| Step 5 | <b>show ip igmp snooping vlan <i>vlan-id</i></b><br><b>Example:</b><br>Device# <code>show ip igmp snooping vlan 21</code>                               | Verifies that Immediate Leave is enabled on the VLAN interface.  |
| Step 6 | <b>end</b><br><b>Example:</b><br>Device(config)# <code>end</code>   | Returns to privileged EXEC mode.   |

## Configuring the IGMP Leave Timer

You can configure the leave time globally or on a per-VLAN basis. Follow these steps to enable the IGMP configurable-leave timer:

### SUMMARY STEPS

1. `enable`
2. `configure terminal`
3. `ip igmp snooping last-member-query-interval time`
4. `ip igmp snooping vlan vlan-id last-member-query-interval time`
5. `end`
6. `show ip igmp snooping`
7. `copy running-config startup-config`

## DETAILED STEPS

|               | Command or Action   | Purpose  |
|---------------|---|--|
| <b>Step 1</b> | <b>enable</b><br><b>Example:</b><br>Device> <b>enable</b>   | Enabled privileged EXEC mode.<br><ul style="list-style-type: none"><li>• Enter your password if prompted.</li></ul>  |
| <b>Step 2</b> | <b>configure terminal</b><br><b>Example:</b><br>Device# <b>configure terminal</b>   | Enters global configuration mode.  |
| <b>Step 3</b> | <b>ip igmp snooping last-member-query-interval <i>time</i></b><br><b>Example:</b><br>Device(config)# <b>ip igmp snooping last-member-query-interval 1000</b>                              | Configures the IGMP leave timer globally. The range is 100 to 32767 milliseconds.<br><br>The default leave time is 1000 milliseconds.<br><b>Note</b> To globally reset the IGMP leave timer to the default setting, use the <b>no ip igmp snooping last-member-query-interval</b> global configuration command.  |
| <b>Step 4</b> | <b>ip igmp snooping vlan <i>vlan-id</i> last-member-query-interval <i>time</i></b><br><b>Example:</b><br>Device(config)# <b>ip igmp snooping vlan 210 last-member-query-interval 1000</b> | (Optional) Configures the IGMP leave time on the VLAN interface. The range is 100 to 32767 milliseconds.<br><b>Note</b> Configuring the leave time on a VLAN overrides the globally configured timer.<br><br><b>Note</b> To remove the configured IGMP leave-time setting from the specified VLAN, use the <b>no ip igmp snooping vlan <i>vlan-id</i> last-member-query-interval</b> global configuration command. |
| <b>Step 5</b> | <b>end</b><br><b>Example:</b><br>Device(config-if)# <b>end</b>  | Returns to privileged EXEC mode.   |
| <b>Step 6</b> | <b>show ip igmp snooping</b><br><b>Example:</b><br>Device# <b>show ip igmp snooping</b>   | (Optional) Displays the configured IGMP leave time.  |
| <b>Step 7</b> | <b>copy running-config startup-config</b><br><b>Example:</b><br>Device# <b>copy running-config startup-config</b>   | (Optional) Saves your entries in the configuration file.   |

## Configuring the IGMP Robustness-Variable

Use the following procedure to configure the IGMP robustness variable on the device.

The robustness variable is the integer used by IGMP snooping during calculations for IGMP messages. The robustness variable provides fine tuning to allow for expected packet loss.

### SUMMARY STEPS

1. **enable**
2. **configure terminal**
3. **ip igmp snooping robustness-variable** *count*
4. **ip igmp snooping vlan** *vlan-id* **robustness-variable** *count*
5. **end**
6. **show ip igmp snooping**
7. **copy running-config startup-config**

### DETAILED STEPS

|        | Command or Action  | Purpose  |
|--------|--|--|
| Step 1 | <b>enable</b><br><b>Example:</b><br>Device> <b>enable</b>  | Enabled privileged EXEC mode.<br><br>• Enter your password if prompted.  |
| Step 2 | <b>configure terminal</b><br><b>Example:</b><br>Device# <b>configure terminal</b>  | Enters global configuration mode.  |
| Step 3 | <b>ip igmp snooping robustness-variable</b> <i>count</i><br><b>Example:</b><br><br>Device(config)# <b>ip igmp snooping robustness-variable 3</b>                                     | Configures the IGMP robustness variable. The range is 1 to 3 times.<br><br>The recommended value for the robustness variable is 2. Use this command to change the value of the robustness variable for IGMP snooping from the default (2) to a specified value.              |
| Step 4 | <b>ip igmp snooping vlan</b> <i>vlan-id</i> <b>robustness-variable</b> <i>count</i><br><b>Example:</b><br><br>Device(config)# <b>ip igmp snooping vlan 100 robustness-variable 3</b> | (Optional) Configures the IGMP robustness variable on the VLAN interface. The range is 1 to 3 times. The recommended value for the robustness variable is 2.<br><br><b>Note</b> Configuring the robustness variable count on a VLAN overrides the globally configured value. |
| Step 5 | <b>end</b><br><b>Example:</b><br><br>Device(config-if)# <b>end</b>   | Returns to privileged EXEC mode.   |

|               | Command or Action   | Purpose  |
|---------------|---|--|
| <b>Step 6</b> | <b>show ip igmp snooping</b><br><b>Example:</b><br><pre>Device# show ip igmp snooping</pre>                           | (Optional) Displays the configured IGMP robustness variable count. |
| <b>Step 7</b> | <b>copy running-config startup-config</b><br><b>Example:</b><br><pre>Device# copy running-config startup-config</pre> | (Optional) Saves your entries in the configuration file.           |

## Configuring the IGMP Last Member Query Count

To configure the number of times the device sends IGMP group-specific or group-source-specific (with IGMP version 3) query messages in response to receiving a group-specific or group-source-specific leave message, use this command.

### SUMMARY STEPS

1. enable
2. configure terminal
3. ip igmp snooping last-member-query-count *count*
4. ip igmp snooping vlan *vlan-id* last-member-query-count *count*
5. end
6. show ip igmp snooping
7. copy running-config startup-config

### DETAILED STEPS

|               | Command or Action  | Purpose  |
|---------------|--|--|
| <b>Step 1</b> | <b>enable</b><br><b>Example:</b><br><pre>Device&gt; enable</pre>   | Enabled privileged EXEC mode. <ul style="list-style-type: none"> <li>• Enter your password if prompted.</li> </ul> |
| <b>Step 2</b> | <b>configure terminal</b><br><b>Example:</b><br><pre>Device# configure terminal</pre>  | Enters global configuration mode.  |
| <b>Step 3</b> | <b>ip igmp snooping last-member-query-count <i>count</i></b><br><b>Example:</b><br><pre>Device(config)# ip igmp snooping last-member-query-count 3</pre> | Configures the IGMP last member query count. The range is 1 to 7 messages. The default is 2 messages.              |

|        | Command or Action  | Purpose  |
|--------|--|--|
| Step 4 | <p><b>ip igmp snooping vlan <i>vlan-id</i> last-member-query-count <i>count</i></b></p> <p><b>Example:</b></p> <pre>Device(config)#ip igmp snooping vlan 100 last-member-query-count 3</pre> | <p>(Optional) Configures the IGMP last member query count on the VLAN interface. The range is 1 to 7 messages.</p> <p><b>Note</b> Configuring the last member query count on a VLAN overrides the globally configured timer.</p> |
| Step 5 | <p><b>end</b></p> <p><b>Example:</b></p> <pre>Device(config-if)# end</pre>   | Returns to privileged EXEC mode.   |
| Step 6 | <p><b>show ip igmp snooping</b></p> <p><b>Example:</b></p> <pre>Device# show ip igmp snooping</pre>  | (Optional) Displays the configured IGMP last member query count.   |
| Step 7 | <p><b>copy running-config startup-config</b></p> <p><b>Example:</b></p> <pre>Device# copy running-config startup-config</pre>  | (Optional) Saves your entries in the configuration file.   |

## Configuring TCN-Related Commands

### Controlling the Multicast Flooding Time After a TCN Event

You can configure the number of general queries by which multicast data traffic is flooded after a topology change notification (TCN) event. If you set the TCN flood query count to 1 the flooding stops after receiving 1 general query. If you set the count to 7, the flooding continues until 7 general queries are received. Groups are relearned based on the general queries received during the TCN event.

Some examples of TCN events are when the client location is changed and the receiver is on same port that was blocked but is now forwarding, and when a port goes down without sending a leave message.

Follow these steps to configure the TCN flood query count:

#### SUMMARY STEPS

1. **enable**
2. **configure terminal**
3. **ip igmp snooping tcn flood query count *count***
4. **end**
5. **show ip igmp snooping**
6. **copy running-config startup-config**

## DETAILED STEPS

|               | Command or Action   | Purpose  |
|---------------|---|--|
| <b>Step 1</b> | <b>enable</b><br><b>Example:</b><br>Device> <b>enable</b>   | Enabled privileged EXEC mode.<br><ul style="list-style-type: none"><li>• Enter your password if prompted.</li></ul>  |
| <b>Step 2</b> | <b>configure terminal</b><br><b>Example:</b><br>Device# <b>configure terminal</b>   | Enters global configuration mode.  |
| <b>Step 3</b> | <b>ip igmp snooping tcn flood query count count</b><br><b>Example:</b><br>Device(config)# <b>ip igmp snooping tcn flood query count 3</b> | Specifies the number of IGMP general queries for which the multicast traffic is flooded.<br><br>The range is 1 to 10. The default, the flooding query count is 2.<br><br><b>Note</b> To return to the default flooding query count, use the <b>no ip igmp snooping tcn flood query count</b> global configuration command. |
| <b>Step 4</b> | <b>end</b><br><b>Example:</b><br>Device(config-if)# <b>end</b>  | Returns to privileged EXEC mode.   |
| <b>Step 5</b> | <b>show ip igmp snooping</b><br><b>Example:</b><br>Device# <b>show ip igmp snooping</b>   | Verifies the TCN settings.   |
| <b>Step 6</b> | <b>copy running-config startup-config</b><br><b>Example:</b><br>Device# <b>copy running-config startup-config</b>                         | (Optional) Saves your entries in the configuration file.   |

## Recovering from Flood Mode

When a topology change occurs, the spanning-tree root sends a special IGMP leave message (also known as global leave) with the group multicast address 0.0.0.0. However, you can enable the device to send the global leave message whether it is the spanning-tree root or not. When the router receives this special leave, it immediately sends general queries, which expedite the process of recovering from the flood mode during the TCN event. Leaves are always sent if the device is the spanning-tree root regardless of this configuration.

Follow these steps to enable sending of leave messages:

## SUMMARY STEPS

1. enable
2. configure terminal
3. ip igmp snooping tcn query solicit
4. end
5. show ip igmp snooping
6. copy running-config startup-config

## DETAILED STEPS

|        | Command or Action  | Purpose   |
|--------|--|---|
| Step 1 | <b>enable</b><br><b>Example:</b><br>Device> enable   | Enables privileged EXEC mode. <ul style="list-style-type: none"> <li>• Enter your password if prompted.</li> </ul>  |
| Step 2 | <b>configure terminal</b><br><b>Example:</b><br>Device# configure terminal   | Enters global configuration mode.   |
| Step 3 | <b>ip igmp snooping tcn query solicit</b><br><b>Example:</b><br>Device(config)# ip igmp snooping tcn query solicit | Sends an IGMP leave message (global leave) to speed the process of recovering from the flood mode caused during a TCN event. By default, query solicitation is disabled.<br><b>Note</b> To return to the default query solicitation, use the <b>no ip igmp snooping tcn query solicit</b> global configuration command. |
| Step 4 | <b>end</b><br><b>Example:</b><br>Device(config)# end   | Returns to privileged EXEC mode.  |
| Step 5 | <b>show ip igmp snooping</b><br><b>Example:</b><br>Device# show ip igmp snooping                                   | Verifies the TCN settings.  |
| Step 6 | <b>copy running-config startup-config</b><br><b>Example:</b><br>Device# copy running-config startup-config         | (Optional) Saves your entries in the configuration file.  |

## Disabling Multicast Flooding During a TCN Event

When the device receives a TCN, multicast traffic is flooded to all the ports until 2 general queries are received. If the device has many ports with attached hosts that are subscribed to different multicast groups, this flooding might exceed the capacity of the link and cause packet loss. Follow these steps to control TCN flooding:

### SUMMARY STEPS

1. **enable**
2. **configure terminal**
3. **interface *interface-id***
4. **no ip igmp snooping tcn flood**
5. **end**
6. **show ip igmp snooping**
7. **copy running-config startup-config**

### DETAILED STEPS

|        | Command or Action  | Purpose   |
|--------|--|---|
| Step 1 | <b>enable</b><br><b>Example:</b><br>Device> <b>enable</b>  | Enabled privileged EXEC mode.<br><ul style="list-style-type: none"> <li>• Enter your password if prompted.</li> </ul>   |
| Step 2 | <b>configure terminal</b><br><b>Example:</b><br>Device# <b>configure terminal</b>                                  | Enters global configuration mode.   |
| Step 3 | <b>interface <i>interface-id</i></b><br><b>Example:</b><br>Device(config)# <b>interface GigabitEthernet 1/0/1</b>  | Specifies the interface to be configured, and enters interface configuration mode.  |
| Step 4 | <b>no ip igmp snooping tcn flood</b><br><b>Example:</b><br>Device(config-if)# <b>no ip igmp snooping tcn flood</b> | Disables the flooding of multicast traffic during a spanning-tree TCN event.<br>By default, multicast flooding is enabled on an interface.<br><b>Note</b> To re-enable multicast flooding on an interface, use the <b>ip igmp snooping tcn flood</b> interface configuration command. |
| Step 5 | <b>end</b><br><b>Example:</b><br>Device(config-if)# <b>end</b>   | Returns to privileged EXEC mode.  |

|        | Command or Action   | Purpose  |
|--------|---|--|
| Step 6 | <b>show ip igmp snooping</b><br><b>Example:</b><br>Device# <code>show ip igmp snooping</code>                           | Verifies the TCN settings.                               |
| Step 7 | <b>copy running-config startup-config</b><br><b>Example:</b><br>Device# <code>copy running-config startup-config</code> | (Optional) Saves your entries in the configuration file. |

## Configuring the IGMP Snooping Querier

Follow these steps to enable the IGMP snooping querier feature in a VLAN:

### SUMMARY STEPS

1. `enable`
2. `configure terminal`
3. `ip igmp snooping querier`
4. `ip igmp snooping querier address ip_address`
5. `ip igmp snooping querier query-interval interval-count`
6. `ip igmp snooping querier tcn query [count count | interval interval]`
7. `ip igmp snooping querier timer expiry timeout`
8. `ip igmp snooping querier version version`
9. `end`
10. `show ip igmp snooping vlan vlan-id`
11. `copy running-config startup-config`

### DETAILED STEPS

|        | Command or Action   | Purpose  |
|--------|---|--|
| Step 1 | <b>enable</b><br><b>Example:</b><br>Device> <code>enable</code>                         | Enabled privileged EXEC mode. <ul style="list-style-type: none"> <li>• Enter your password if prompted.</li> </ul> |
| Step 2 | <b>configure terminal</b><br><b>Example:</b><br>Device# <code>configure terminal</code> | Enters global configuration mode.  |
| Step 3 | <b>ip igmp snooping querier</b><br><b>Example:</b>                                      | Enables the IGMP snooping querier.   |

|               | Command or Action   | Purpose  |
|---------------|---|--|
|               | Device(config)# <b>ip igmp snooping querier</b>   |  |
| <b>Step 4</b> | <b>ip igmp snooping querier address</b> <i>ip_address</i><br><b>Example:</b><br>Device(config)# <b>ip igmp snooping querier address</b><br><b>172.16.24.1</b>   | (Optional) Specifies an IP address for the IGMP snooping querier. If you do not specify an IP address, the querier tries to use the global IP address configured for the IGMP querier.<br><b>Note</b> The IGMP snooping querier does not generate an IGMP general query if it cannot find an IP address on the device. |
| <b>Step 5</b> | <b>ip igmp snooping querier query-interval</b> <i>interval-count</i><br><b>Example:</b><br>Device(config)# <b>ip igmp snooping querier</b><br><b>query-interval 30</b>  | (Optional) Sets the interval between IGMP queries. The range is 1 to 18000 seconds.  |
| <b>Step 6</b> | <b>ip igmp snooping querier tcn query</b> [ <b>count</b> <i>count</i>   <b>interval</b> <i>interval</i> ]<br><b>Example:</b><br>Device(config)# <b>ip igmp snooping querier tcn query</b><br><b>interval 20</b> | (Optional) Sets the time between Topology Change Notification (TCN) queries. The count range is 1 to 10. The interval range is 1 to 255 seconds.   |
| <b>Step 7</b> | <b>ip igmp snooping querier timer expiry</b> <i>timeout</i><br><b>Example:</b><br>Device(config)# <b>ip igmp snooping querier timer</b><br><b>expiry 180</b>  | (Optional) Sets the length of time until the IGMP querier expires. The range is 60 to 300 seconds.   |
| <b>Step 8</b> | <b>ip igmp snooping querier version</b> <i>version</i><br><b>Example:</b><br>Device(config)# <b>ip igmp snooping querier version</b><br><b>2</b>  | (Optional) Selects the IGMP version number that the querier feature uses. Select 1 or 2.   |
| <b>Step 9</b> | <b>end</b><br><b>Example:</b><br>Device(config-if)# <b>end</b>  | Returns to privileged EXEC mode.   |

|                | Command or Action   | Purpose   |
|----------------|---|---|
| <b>Step 10</b> | <b>show ip igmp snooping vlan <i>vlan-id</i></b><br><b>Example:</b><br>Device# <code>show ip igmp snooping vlan 30</code> | (Optional) Verifies that the IGMP snooping querier is enabled on the VLAN interface. The VLAN ID range is 1 to 1001 and 1006 to 4094. |
| <b>Step 11</b> | <b>copy running-config startup-config</b><br><b>Example:</b><br>Device# <code>copy running-config startup-config</code>   | (Optional) Saves your entries in the configuration file.  |

## Disabling IGMP Report Suppression

Follow these steps to disable IGMP report suppression:

### SUMMARY STEPS

1. `enable`
2. `configure terminal`
3. `no ip igmp snooping report-suppression`
4. `end`
5. `show ip igmp snooping`
6. `copy running-config startup-config`

### DETAILED STEPS

|               | Command or Action   | Purpose  |
|---------------|---|--|
| <b>Step 1</b> | <b>enable</b><br><b>Example:</b><br>Device> <code>enable</code>   | Enabled privileged EXEC mode.<br><ul style="list-style-type: none"> <li>• Enter your password if prompted.</li> </ul>  |
| <b>Step 2</b> | <b>configure terminal</b><br><b>Example:</b><br>Device# <code>configure terminal</code>   | Enters global configuration mode.  |
| <b>Step 3</b> | <b>no ip igmp snooping report-suppression</b><br><b>Example:</b><br>Device(config)# <code>no ip igmp snooping report-suppression</code> | Disables IGMP report suppression. When report suppression is disabled, all IGMP reports are forwarded to the multicast routers.<br>IGMP report suppression is enabled by default.<br>When IGMP report suppression is enabled, the device forwards only one IGMP report per multicast router query. |

|               | Command or Action   | Purpose  |
|---------------|---|--|
|               |   | <b>Note</b> To re-enable IGMP report suppression, use the <b>ip igmp snooping report-suppression</b> global configuration command. |
| <b>Step 4</b> | <b>end</b><br><b>Example:</b><br><br>Device(config-if)# <b>end</b>  | Returns to privileged EXEC mode.   |
| <b>Step 5</b> | <b>show ip igmp snooping</b><br><b>Example:</b><br><br>Device# <b>show ip igmp snooping</b>                           | Verifies that IGMP report suppression is disabled.   |
| <b>Step 6</b> | <b>copy running-config startup-config</b><br><b>Example:</b><br><br>Device# <b>copy running-config startup-config</b> | (Optional) Saves your entries in the configuration file.   |

## Monitoring IGMP

You can display specific statistics, such as the contents of IP routing tables, caches, and databases.



**Note** This release does not support per-route statistics.

You can display information to learn resource usage and solve network problems. You can also display information about node reachability and discover the routing path that packets of your device are taking through the network.

You can use any of the privileged EXEC commands in the following table to display various routing statistics.

*Table 7: Commands for Displaying System and Network Statistics*

| Command  | Purpose   |
|--|---|
| <b>show ip igmp filter</b>   | Displays IGMP filter information.                                 |
| <b>show ip igmp groups</b> [ <i>type-number</i>   <i>detail</i> ]                          | Displays the multicast groups that are directed to the interface. |
| <b>show ip igmp interface</b> [ <i>type number</i> ]                                       | Displays multicast-related information about the interface.       |
| <b>show ip igmp membership</b> [ <i>name/group address</i>   <b>all</b>   <b>tracked</b> ] | Displays IGMP membership information about the interface.         |

| Command   | Purpose   |
|---|---|
| <code>show ip igmp profile [ profile_number ]</code>                      | Displays IGMP profile information.  |
| <code>show ip igmp ssm-mapping [ hostname/IP address ]</code>             | Displays IGMP SSM mapping information.  |
| <code>show ip igmp static-group {class-map [ interface [ type ] ]}</code> | Displays static group information.  |
| <code>show ip igmp vrf</code>   | Displays the selected VPN routing/forwarding information.<br><br><b>Note</b> The <code>show ip igmp vrf vrf-name</code> command displays the snooping information for the specified VRF. Use the <code>show ip igmp groups</code> command to see the group information. |

## Monitoring IGMP Snooping Information

You can display IGMP snooping information for dynamically learned and statically configured router ports and VLAN interfaces. You can also display MAC address multicast entries for a VLAN configured for IGMP snooping.

*Table 8: Commands for Displaying IGMP Snooping Information*

| Command  | Purpose  |
|--|--|
| <code>show ip igmp snooping detail</code>  | Displays the operational state information.  |
| <code>show ip igmp snooping groups [ count [dynamic [count]   user [count]]</code>     | Displays multicast table information.<br><br><ul style="list-style-type: none"> <li>• <b>count</b>—Displays the total number of entries in the table.</li> <li>• <b>dynamic</b>—Displays entries learned dynamically.</li> <li>• <b>user</b>—Displays only the user-configured entries.</li> </ul> |
| <code>show ip igmp snooping groups [ count   [vlan vlan-id [A.B.C.D   count ] ]</code> | Displays multicast table information.<br><br><ul style="list-style-type: none"> <li>• <b>count</b>—Displays the total number of entries in the table.</li> <li>• <b>vlan</b>—Displays group information for the specified VLAN.</li> </ul>   |
| <code>show ip igmp snooping igmpv2-tracking</code>                                     | Displays the IGMP snooping tracking information.<br><br><b>Note</b> This command displays information for wireless LANs and not for wired LANs. Use the <code>show ip igmp snooping igmpv2-tracking</code> command to display the information for wired LANs.                                      |

| Command   | Purpose  |
|---|--|
| <b>show ip igmp snooping groups</b> <i>vlan</i> <i>vlan-id</i> [ <i>ip_address</i>   <b>count</b>   <b>dynamic</b> [ <b>count</b> ]   <b>user</b> [ <b>count</b> ]] | Displays multicast table information for <ul style="list-style-type: none"> <li>• <i>vlan-id</i>—The VLAN ID range is 1 to 4094.</li> <li>• <b>count</b>—Displays the total number of entries and the number of actual entries.</li> <li>• <b>dynamic</b>—Displays entries learned from dynamic sources.</li> <li>• <i>ip_address</i>—Displays characteristics for a specific IP address.</li> <li>• <b>user</b>—Displays only the user-configured entries.</li> </ul> |
| <b>show ip igmp snooping mrouter</b> [ <b>vlan</b> <i>vlan-id</i> ]   | Displays information on dynamically learned multicast routers. <p><b>Note</b> When you enable IGMP snooping on a VLAN, a multicast router is connected to the VLAN.</p> <p>(Optional) Enter <b>vlan</b> <i>vlan-id</i> to display information for a specific VLAN.</p>   |
| <b>show ip igmp snooping querier</b> [ <b>detail</b>   <b>vlan</b> <i>vlan-id</i> ]   | Displays information about the IP address of the querier and the number of query messages in the VLAN. <p>(Optional) Enter <b>detail</b> to display the details of the querier.</p> <p>(Optional) Enter <b>vlan</b> <i>vlan-id</i> to display information for a specific VLAN.</p>   |
| <b>show ip igmp snooping querier</b> [ <b>vlan</b> <i>vlan-id</i> ] <b>detail</b>   | Displays information about the IP address of the querier and the number of query messages in the VLAN and the configuration of the querier in the VLAN.  |
| <b>show ip igmp snooping</b> [ <b>vlan</b> <i>vlan-id</i> [ <b>detail</b> ] ]   | Displays the snooping configuration information for all interfaces on the device. <p>(Optional) Enter <b>vlan</b> <i>vlan-id</i> to display information for a specific VLAN (1001 and 1006 to 4094).</p>   |

## Monitoring IGMP Filtering and Throttling Configuration

You can display IGMP profile characteristics, and you can display the IGMP profile and maximum group configuration for all interfaces on the device or for a specified interface. You can also display the IGMP throttling configuration for all interfaces on the device or for a specified interface.

*Table 9: Commands for Displaying IGMP Filtering and Throttling Configuration*

| Command   | Purpose   |
|---|---|
| <b>show ip igmp profile</b> [ <i>profile number</i> ] | Displays the specified IGMP profile or all the IGMP profiles defined on the device. |

| Command  | Purpose  |
|--|--|
| <code>show running-config [interface <i>interface-id</i>]</code> | Displays the configuration of the specified interface. If no interface is specified, displays the configuration of all interfaces on the device. (If an interface is configured) the maximum number of IGMP groups an interface can belong to and the IGMP profile of the interface. |

## Configuration Examples for IGMP

### Example: Configuring the Device as a Member of a Multicast Group

This example shows how to enable the device to join multicast group 255.2.2.2:

```
Device(config)# interface gigabitEthernet1/0/1
Device(config-if)# ip igmp join-group 255.2.2.2
Device(config-if)#
```

### Example: Controlling Access to Multicast Groups

To limit the number of joins on the interface, configure the port for filter which associates with the IGMP profile.

```
Device# configure terminal
Device(config)# ip igmp profile 10
Device(config-igmp-profile)# ?

IGMP profile configuration commands:
deny matching addresses are denied
exit Exit from igmp profile configuration mode
no Negate a command or set its defaults
permit matching addresses are permitted
range add a range to the set

Device(config-igmp-profile)# range 172.16.5.1
Device(config-igmp-profile)# exit
Device(config)# interface gigabitEthernet 2/0/10
Device(config-if)# ip igmp filter 10
```

### Examples: Configuring IGMP Snooping

This example shows how to enable a static connection to a multicast router:

```
Device# configure terminal
Device(config)# ip igmp snooping vlan 200 mrouter interface gigabitEthernet1/0/2
Device(config)# end
```

This example shows how to statically configure a host on a port:

```
Device# configure terminal
Device(config)# ip igmp snooping vlan 105 static 224.2.4.12 interface gigabitethernet1/0/1
Device(config)# end
```

This example shows how to enable IGMP Immediate Leave on VLAN 130:

```
Device# configure terminal
Device(config)# ip igmp snooping vlan 130 immediate-leave
Device(config)# end
```

This example shows how to set the IGMP snooping querier source address to 10.0.0.64:

```
Device# configure terminal
Device(config)# ip igmp snooping querier 10.0.0.64
Device(config)# end
```

This example shows how to set the IGMP snooping querier maximum response time to 25 seconds:

```
Device# configure terminal
Device(config)# ip igmp snooping querier query-interval 25
Device(config)# end
```

This example shows how to set the IGMP snooping querier timeout to 60 seconds:

```
Device# configure terminal
Device(config)# ip igmp snooping querier timer expiry 60
Device(config)# end
```

This example shows how to set the IGMP snooping querier feature to Version 2:

```
Device# configure terminal
Device(config)# no ip igmp snooping querier version 2
Device(config)# end
```

## Example: Configuring IGMP Profiles

This example shows how to create IGMP profile 4 allowing access to the single IP multicast address and how to verify the configuration. If the action was to deny (the default), it would not appear in the **show ip igmp profile** output display.

```
Device(config)# ip igmp profile 4
Device(config-igmp-profile)# permit
Device(config-igmp-profile)# range 229.9.9.0
Device(config-igmp-profile)# end
Device# show ip igmp profile 4
IGMP Profile 4
  permit
  range 229.9.9.0 229.9.9.0
```

## Example: Applying IGMP Profile

This example shows how to apply IGMP profile 4 to a port:

```
Device(config)# interface gigabitEthernet1/0/2
Device(config-if)# ip igmp filter 4
Device(config-if)# end
```

## Example: Setting the Maximum Number of IGMP Groups

This example shows how to limit to 25 the number of IGMP groups that a port can join:

```
Device(config)# interface GigabitEthernet1/0/2
Device(config-if)# ip igmp max-groups 25
Device(config-if)# end
```

## Example: Interface Configuration as a Routed Port

This example shows how to configure an interface on the device as a routed port. This configuration is required on the interface for several IP multicast routing configuration procedures that require running the **no switchport** command.

```
Device# configure terminal
Device(config)# interface GigabitEthernet1/0/9
Device(config-if)# description interface to be use as routed port
Device(config-if)# no switchport
Device(config-if)# ip address 10.20.20.1 255.255.255.0
Device(config-if)# ip pim sparse-mode
Device(config-if)# ip igmp join-group 224.1.2.3 source 15.15.15.2
Device(config-if)# end
Device# configure terminal
Device# show run interface gigabitEthernet 1/0/9

Current configuration : 166 bytes
!
interface GigabitEthernet1/0/9
 no switchport
 ip address 10.20.20.1 255.255.255.0
 ip pim sparse-mode
 ip igmp static-group 224.1.2.3 source 15.15.15.2
end
```

## Example: Interface Configuration as an SVI

This example shows how to configure an interface on the device as an SVI. This configuration is required on the interface for several IP multicast routing configuration procedures that require running the **no switchport** command.

```
Device(config)# interface vlan 150
Device(config-if)# ip address 10.20.20.1 255.255.255.0
Device(config-if)# ip pim sparse-mode
Device(config-if)# ip igmp join-group 224.1.2.3 source 15.15.15.2
Device(config-if)# end
Device# configure terminal
Device(config)# ip igmp snooping vlan 20 static 224.1.2.3 interface gigabitEthernet 1/0/9
Device# show run interface vlan 150

Current configuration : 137 bytes
!
interface vlan 150
```

```
ip address 10.20.20.1 255.255.255.0
ip pim sparse-mode
ip igmp static-group 224.1.2.3 source 15.15.15.2
end
```

## Example: Configuring the Device to Forward Multicast Traffic in the Absence of Directly Connected IGMP Hosts

The following example shows how to configure a device to forward multicast traffic in the absence of directly connected IGMP hosts using the **ip igmp join-group** command. With this method, the device accepts the multicast packets in addition to forwarding them. Accepting the multicast packets prevents the device from fast switching.

In this example, GigabitEthernet interface 1/0/1 on the device is configured to join the group 225.2.2.2:

```
interface GigabitEthernet1/0/1
ip igmp join-group 225.2.2.2
```

The following example shows how to configure a device to forward multicast traffic in the absence of directly connected IGMP hosts using the **ip igmp static-group** command. With this method, the device does not accept the packets itself, but only forwards them. Hence, this method allows fast switching. The outgoing interface appears in the IGMP cache, but the device itself is not a member, as evidenced by lack of an “L” (local) flag in the multicast route entry.

In this example, static group membership entries for group 225.2.2.2 are configured on Fast Ethernet interface 0/1/0:

```
interface GigabitEthernet1/0/1
ip igmp static-group 225.2.2.2
```

## Controlling Access to an SSM Network Using IGMP Extended Access Lists

This section contains the following configuration examples for controlling access to an SSM network using IGMP extended access lists:




---

**Note** Keep in mind that access lists are very flexible: there are many combinations of permit and deny statements one could use in an access list to filter multicast traffic. The examples in this section simply provide a few examples of how it can be done.

---

### Example: Denying All States for a Group G

The following example shows how to deny all states for a group G. In this example, Fast Ethernet interface 0/0/0 is configured to filter all sources for SSM group 232.2.2.2 in IGMPv3 reports, which effectively denies this group.

```
ip access-list extended test1
deny igmp any host 232.2.2.2
permit igmp any any
!
```

```
interface GigabitEthernet 1/0/1
 ip igmp access-group test1
```

### Example: Denying All States for a Source S

The following example shows how to deny all states for a source S. In this example, Gigabit Ethernet interface 1/1/0 is configured to filter all groups for source 10.2.1.32 in IGMPv3 reports, which effectively denies this source.

```
ip access-list extended test2
 deny igmp host 10.2.1.32 any
 permit igmp any any
 !
interface GigabitEthernet1/0/1
 ip igmp access-group test2
```

### Example: Permitting All States for a Group G

The following example shows how to permit all states for a group G. In this example, Gigabit Ethernet interface 1/2/0 is configured to accept all sources for SSM group 232.1.1.10 in IGMPv3 reports, which effectively accepts this group altogether.

```
ip access-list extended test3
 permit igmp any host 232.1.1.10
 !
interface GigabitEthernet 1/2/0
 ip igmp access-group test3
```

### Example: Permitting All States for a Source S

The following example shows how to permit all states for a source S. In this example, Gigabit Ethernet interface 1/2 is configured to accept all groups for source 10.6.23.32 in IGMPv3 reports, which effectively accepts this source altogether.

```
ip access-list extended test4
 permit igmp host 10.6.23.32 any
 !
interface GigabitEthernet1/2/0
 ip igmp access-group test4
```

### Example: Filtering a Source S for a Group G

The following example shows how to filter a particular source S for a group G. In this example, Gigabit Ethernet interface 0/3/0 is configured to filter source 232.2.2.2 for SSM group 232.2.30.30 in IGMPv3 reports.

```
ip access-list extended test5
 deny igmp host 10.4.4.4 host 232.2.30.30
 permit igmp any any
 !
interface GigabitEthernet0/3/0
 ip igmp access-group test5
```

## Additional References for IGMP

### Related Documents

| Related Topic  | Document Title  |
|--|---|
| For complete syntax and usage information for the commands used in this chapter. | See the IP Multicast Routing Commands section of the <i>Command Reference (Catalyst 9400 Series Switches)</i> |

## Feature History for IGMP

This table provides release and related information for the features explained in this module.

These features are available in all the releases subsequent to the one they were introduced in, unless noted otherwise.

| Release                     | Feature | Feature Information  |
|-----------------------------|---------|--|
| Cisco IOS XE Everest 16.6.1 | IGMP    | IGMP is used to dynamically register individual hosts in a multicast group on a particular LAN. Enabling PIM on an interface also enables IGMP. IGMP provides a means to automatically control and limit the flow of multicast traffic throughout your network with the use of special multicast queriers and hosts. |

Use the Cisco Feature Navigator to find information about platform and software image support. To access Cisco Feature Navigator, go to <http://www.cisco.com/go/cfn>.