



Implementing IPv6 Multicast

- [Information About Implementing IPv6 Multicast Routing, on page 1](#)
- [Implementing IPv6 Multicast, on page 9](#)
- [Additional References, on page 32](#)
- [Feature History for IPv6 Multicast, on page 32](#)

Information About Implementing IPv6 Multicast Routing

This chapter describes how to implement IPv6 multicast routing on the switch.

Traditional IP communication allows a host to send packets to a single host (unicast transmission) or to all hosts (broadcast transmission). IPv6 multicast provides a third scheme, allowing a host to send a single data stream to a subset of all hosts (group transmission) simultaneously.

IPv6 Multicast Overview

An IPv6 multicast group is an arbitrary group of receivers that want to receive a particular data stream. This group has no physical or geographical boundaries--receivers can be located anywhere on the Internet or in any private network. Receivers that are interested in receiving data flowing to a particular group must join the group by signaling their local switch. This signaling is achieved with the MLD protocol.

Switches use the MLD protocol to learn whether members of a group are present on their directly attached subnets. Hosts join multicast groups by sending MLD report messages. The network then delivers data to a potentially unlimited number of receivers, using only one copy of the multicast data on each subnet. IPv6 hosts that wish to receive the traffic are known as group members.

Packets delivered to group members are identified by a single multicast group address. Multicast packets are delivered to a group using best-effort reliability, just like IPv6 unicast packets.

The multicast environment consists of senders and receivers. Any host, regardless of whether it is a member of a group, can send to a group. However, only members of a group can listen to and receive the message.

A multicast address is chosen for the receivers in a multicast group. Senders use that address as the destination address of a datagram to reach all members of the group.



Note As per RFC 4291, the FF0x::/12 (where the T flag is set to 0 in IPv6 destination address) is for permanently assigned (“well-known”) IPv6 multicast address range.

In Cisco Catalyst 9200 Series Switches, the default behavior for packets with this address range is to flood in the ingress VLAN.

Membership in a multicast group is dynamic; hosts can join and leave at any time. There is no restriction on the location or number of members in a multicast group. A host can be a member of more than one multicast group at a time.

How active a multicast group is, its duration, and its membership can vary from group to group and from time to time. A group that has members may have no activity.

IPv6 Multicast Routing Implementation

The Cisco IOS software supports the following protocols to implement IPv6 multicast routing:

- MLD is used by IPv6 switches to discover multicast listeners (nodes that want to receive multicast packets destined for specific multicast addresses) on directly attached links. There are two versions of MLD: MLD version 1 is based on version 2 of the Internet Group Management Protocol (IGMP) for IPv4, and MLD version 2 is based on version 3 of the IGMP for IPv4. IPv6 multicast for Cisco IOS software uses both MLD version 2 and MLD version 1. MLD version 2 is fully backward-compatible with MLD version 1 (described in RFC 2710). Hosts that support only MLD version 1 will interoperate with a switch running MLD version 2. Mixed LANs with both MLD version 1 and MLD version 2 hosts are likewise supported.
- PIM-SM is used between switches so that they can track which multicast packets to forward to each other and to their directly connected LANs.
- PIM in Source Specific Multicast (PIM-SSM) is similar to PIM-SM with the additional ability to report interest in receiving packets from specific source addresses (or from all but the specific source addresses) to an IP multicast address.

IPv6 Multicast Listener Discovery Protocol

To start implementing multicasting in the campus network, users must first define who receives the multicast. The MLD protocol is used by IPv6 switches to discover the presence of multicast listeners (for example, nodes that want to receive multicast packets) on their directly attached links, and to discover specifically which multicast addresses are of interest to those neighboring nodes. It is used for discovering local group and source-specific group membership.

The MLD protocol provides a means to automatically control and limit the flow of multicast traffic throughout your network with the use of special multicast queriers and hosts.

Multicast Queriers and Hosts

A multicast querier is a network device, such as a switch, that sends query messages to discover which network devices are members of a given multicast group.

A multicast host is a receiver, including switches, that send report messages to inform the querier of a host membership.

A set of queriers and hosts that receive multicast data streams from the same source is called a multicast group. Queriers and hosts use MLD reports to join and leave multicast groups and to begin receiving group traffic.

MLD uses the Internet Control Message Protocol (ICMP) to carry its messages. All MLD messages are link-local with a hop limit of 1, and they all have the switch alert option set. The switch alert option implies an implementation of the hop-by-hop option header.

MLD Access Group

The MLD access group provides receiver access control in Cisco IOS IPv6 multicast switches. This feature limits the list of groups a receiver can join, and it allows or denies sources used to join SSM channels.

Explicit Tracking of Receivers

The explicit tracking feature allows a switch to track the behavior of the hosts within its IPv6 network. This feature also enables the fast leave mechanism to be used with MLD version 2 host reports.

Protocol Independent Multicast

Protocol Independent Multicast (PIM) is used between switches so that they can track which multicast packets to forward to each other and to their directly connected LANs. PIM works independently of the unicast routing protocol to perform send or receive multicast route updates like other protocols. Regardless of which unicast routing protocols are being used in the LAN to populate the unicast routing table, Cisco IOS PIM uses the existing unicast table content to perform the Reverse Path Forwarding (RPF) check instead of building and maintaining its own separate routing table.

You can configure IPv6 multicast to use either PIM-SM or PIM-SSM operation, or you can use both PIM-SM and PIM-SSM together in your network.

PIM-Sparse Mode

IPv6 multicast provides support for intradomain multicast routing using PIM-SM. PIM-SM uses unicast routing to provide reverse-path information for multicast tree building, but it is not dependent on any particular unicast routing protocol.

PIM-SM is used in a multicast network when relatively few switches are involved in each multicast and these switches do not forward multicast packets for a group, unless there is an explicit request for the traffic. PIM-SM distributes information about active sources by forwarding data packets on the shared tree. PIM-SM initially uses shared trees, which requires the use of an RP.

Requests are accomplished via PIM joins, which are sent hop by hop toward the root node of the tree. The root node of a tree in PIM-SM is the RP in the case of a shared tree or the first-hop switch that is directly connected to the multicast source in the case of a shortest path tree (SPT). The RP keeps track of multicast groups and the hosts that send multicast packets are registered with the RP by that host's first-hop switch.

As a PIM join travels up the tree, switches along the path set up multicast forwarding state so that the requested multicast traffic will be forwarded back down the tree. When multicast traffic is no longer needed, a switch sends a PIM prune up the tree toward the root node to prune (or remove) the unnecessary traffic. As this PIM prune travels hop by hop up the tree, each switch updates its forwarding state appropriately. Ultimately, the forwarding state associated with a multicast group or source is removed.

A multicast data sender sends data destined for a multicast group. The designated switch (DR) of the sender takes those data packets, unicast-encapsulates them, and sends them directly to the RP. The RP receives these encapsulated data packets, de-encapsulates them, and forwards them onto the shared tree. The packets then

follow the (*, G) multicast tree state in the switches on the RP tree, being replicated wherever the RP tree branches, and eventually reaching all the receivers for that multicast group. The process of encapsulating data packets to the RP is called registering, and the encapsulation packets are called PIM register packets.

IPv6 BSR: Configure RP Mapping

PIM switches in a domain must be able to map each multicast group to the correct RP address. The BSR protocol for PIM-SM provides a dynamic, adaptive mechanism to distribute group-to-RP mapping information rapidly throughout a domain. With the IPv6 BSR feature, if an RP becomes unreachable, it will be detected and the mapping tables will be modified so that the unreachable RP is no longer used, and the new tables will be rapidly distributed throughout the domain.

Every PIM-SM multicast group needs to be associated with the IP or IPv6 address of an RP. When a new multicast sender starts sending, its local DR will encapsulate these data packets in a PIM register message and send them to the RP for that multicast group. When a new multicast receiver joins, its local DR will send a PIM join message to the RP for that multicast group. When any PIM switch sends a (*, G) join message, the PIM switch needs to know which is the next switch toward the RP so that G (Group) can send a message to that switch. Also, when a PIM switch is forwarding data packets using (*, G) state, the PIM switch needs to know which is the correct incoming interface for packets destined for G, because it needs to reject any packets that arrive on other interfaces.

A small set of switches from a domain are configured as candidate bootstrap switches (C-BSRs) and a single BSR is selected for that domain. A set of switches within a domain are also configured as candidate RPs (C-RPs); typically, these switches are the same switches that are configured as C-BSRs. Candidate RPs periodically unicast candidate-RP-advertisement (C-RP-Adv) messages to the BSR of that domain, advertising their willingness to be an RP. A C-RP-Adv message includes the address of the advertising C-RP, and an optional list of group addresses and mask length fields, indicating the group prefixes for which the candidacy is advertised. The BSR then includes a set of these C-RPs, along with their corresponding group prefixes, in bootstrap messages (BSMs) it periodically originates. BSMs are distributed hop-by-hop throughout the domain.

Bidirectional BSR support allows bidirectional RPs to be advertised in C-RP messages and bidirectional ranges in the BSM. All switches in a system must be able to use the bidirectional range in the BSM; otherwise, the bidirectional RP feature will not function.

PIM-Source Specific Multicast

PIM-SSM is the routing protocol that supports the implementation of SSM and is derived from PIM-SM. However, unlike PIM-SM where data from all multicast sources are sent when there is a PIM join, the SSM feature forwards datagram traffic to receivers from only those multicast sources that the receivers have explicitly joined, thus optimizing bandwidth utilization and denying unwanted Internet broadcast traffic. Further, instead of the use of RP and shared trees, SSM uses information found on source addresses for a multicast group. This information is provided by receivers through the source addresses relayed to the last-hop switches by MLD membership reports, resulting in shortest-path trees directly to the sources.

In SSM, delivery of datagrams is based on (S, G) channels. Traffic for one (S, G) channel consists of datagrams with an IPv6 unicast source address S and the multicast group address G as the IPv6 destination address. Systems will receive this traffic by becoming members of the (S, G) channel. Signaling is not required, but receivers must subscribe or unsubscribe to (S, G) channels to receive or not receive traffic from specific sources.

MLD version 2 is required for SSM to operate. MLD allows the host to provide source information. Before SSM can run with MLD, SSM must be supported in the Cisco IOS IPv6 switch, the host where the application is running, and the application itself.

Routable Address Hello Option

When an IPv6 interior gateway protocol is used to build the unicast routing table, the procedure to detect the upstream switch address assumes the address of a PIM neighbor is always same as the address of the next-hop switch, as long as they refer to the same switch. However, it may not be the case when a switch has multiple addresses on a link.

Two typical situations can lead to this situation for IPv6. The first situation can occur when the unicast routing table is not built by an IPv6 interior gateway protocol such as multicast BGP. The second situation occurs when the address of an RP shares a subnet prefix with downstream switches (note that the RP switch address has to be domain-wide and therefore cannot be a link-local address).

The routable address hello option allows the PIM protocol to avoid such situations by adding a PIM hello message option that includes all the addresses on the interface on which the PIM hello message is advertised. When a PIM switch finds an upstream switch for some address, the result of RPF calculation is compared with the addresses in this option, in addition to the PIM neighbor's address itself. Because this option includes all the possible addresses of a PIM switch on that link, it always includes the RPF calculation result if it refers to the PIM switch supporting this option.

Because of size restrictions on PIM messages and the requirement that a routable address hello option fits within a single PIM hello message, a limit of 16 addresses can be configured on the interface.

PIM IPv6 Stub Routing

The PIM stub routing feature reduces resource usage by moving routed traffic closer to the end user.

In a network using PIM stub routing, the only allowable route for IPv6 traffic to the user is through a switch that is configured with PIM stub routing. PIM passive interfaces are connected to Layer 2 access domains, such as VLANs, or to interfaces that are connected to other Layer 2 devices. Only directly connected multicast receivers and sources are allowed in the Layer 2 access domains. The PIM passive interfaces do not send or process any received PIM control packets.

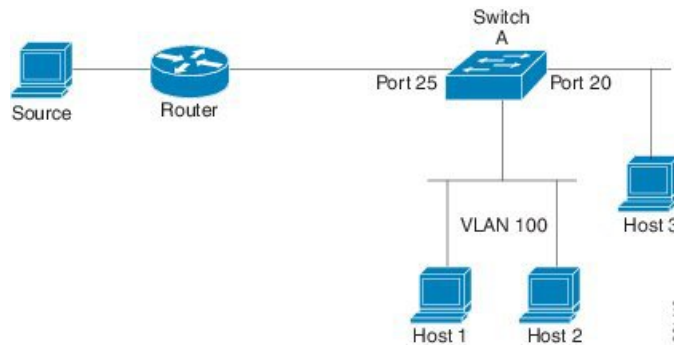
When using PIM stub routing, you should configure the distribution and remote routers to use IPv6 multicast routing and configure only the switch as a PIM stub router. The switch does not route transit traffic between distribution routers. You also need to configure a routed uplink port on the switch. The switch uplink port cannot be used with SVIs.

You must also configure EIGRP stub routing when configuring PIM stub routing on the switch.

The redundant PIM stub router topology is not supported. The redundant topology exists when there is more than one PIM router forwarding multicast traffic to a single access domain. PIM messages are blocked, and the PIM assert and designated router election mechanisms are not supported on the PIM passive interfaces. Only the non-redundant access router topology is supported by the PIM stub feature. By using a non-redundant topology, the PIM passive interface assumes that it is the only interface and designated router on that access domain.

In the figure shown below, Switch A routed uplink port 25 is connected to the router and PIM stub routing is enabled on the VLAN 100 interfaces and on Host 3. This configuration allows the directly connected hosts to receive traffic from multicast source.

Figure 1: PIM Stub Router Configuration



Rendezvous Point

IPv6 PIM provides embedded RP support. Embedded RP support allows the device to learn RP information using the multicast group destination address instead of the statically configured RP. For devices that are the RP, the device must be statically configured as the RP.

The device searches for embedded RP group addresses in MLD reports or PIM messages and data packets. On finding such an address, the device learns the RP for the group from the address itself. It then uses this learned RP for all protocol activity for the group. For devices that are the RP, the device is advertised as an embedded RP must be configured as the RP.

To select a static RP over an embedded RP, the specific embedded RP group range or mask must be configured in the access list of the static RP. When PIM is configured in sparse mode, you must also choose one or more devices to operate as an RP. An RP is a single common root placed at a chosen point of a shared distribution tree and is configured statically in each box.

PIM DRs forward data from directly connected multicast sources to the RP for distribution down the shared tree. Data is forwarded to the RP in one of two ways:

- Data is encapsulated in register packets and unicast directly to the RP by the first-hop device operating as the DR.
- If the RP has itself joined the source tree, it is multicast-forwarded per the RPF forwarding algorithm described in the PIM-Sparse Mode section.

The RP address is used by first-hop devices to send PIM register messages on behalf of a host sending a packet to the group. The RP address is also used by last-hop devices to send PIM join and prune messages to the RP to inform it about group membership. You must configure the RP address on all devices (including the RP device).

A PIM device can be an RP for more than one group. Only one RP address can be used at a time within a PIM domain for a certain group. The conditions specified by the access list determine for which groups the device is an RP.

IPv6 multicast supports the PIM accept register feature, which is the ability to perform PIM-SM register message filtering at the RP. The user can match an access list or compare the AS path for the registered source with the AS path specified in a route map.

Static Mroutes

IPv6 static mroutes behave much in the same way as IPv4 static mroutes used to influence the RPF check. IPv6 static mroutes share the same database as IPv6 static routes and are implemented by extending static route support for RPF checks. Static mroutes support equal-cost multipath mroutes, and they also support unicast-only static routes.

MRIB

The Multicast Routing Information Base (MRIB) is a protocol-independent repository of multicast routing entries instantiated by multicast routing protocols (routing clients). Its main function is to provide independence between routing protocols and the Multicast Forwarding Information Base (MFIB). It also acts as a coordination and communication point among its clients.

Routing clients use the services provided by the MRIB to instantiate routing entries and retrieve changes made to routing entries by other clients. Besides routing clients, MRIB also has forwarding clients (MFIB instances) and special clients such as MLD. MFIB retrieves its forwarding entries from MRIB and notifies the MRIB of any events related to packet reception. These notifications can either be explicitly requested by routing clients or spontaneously generated by the MFIB.

Another important function of the MRIB is to allow for the coordination of multiple routing clients in establishing multicast connectivity within the same multicast session. MRIB also allows for the coordination between MLD and routing protocols.

MFIB

The MFIB is a platform-independent and routing-protocol-independent library for IPv6 software. Its main purpose is to provide a Cisco IOS platform with an interface with which to read the IPv6 multicast forwarding table and notifications when the forwarding table changes. The information provided by the MFIB has clearly defined forwarding semantics and is designed to make it easy for the platform to translate to its specific hardware or software forwarding mechanisms.

When routing or topology changes occur in the network, the IPv6 routing table is updated, and those changes are reflected in the MFIB. The MFIB maintains next-hop address information based on the information in the IPv6 routing table. Because there is a one-to-one correlation between MFIB entries and routing table entries, the MFIB contains all known routes and eliminates the need for route cache maintenance that is associated with switching paths such as fast switching and optimum switching.

MFIB



Note Distributed MFIB has its significance only in a stacked environment where the active switch distributes the MFIB information to the other member switches in the stack. In the following section the line cards are nothing but the member switches in the stack.

MFIB (MFIB) is used to switch multicast IPv6 packets on distributed platforms. MFIB may also contain platform-specific information on replication across line cards. The basic MFIB routines that implement the core of the forwarding logic are common to all forwarding environments.

MFIB implements the following functions:

- Relays data-driven protocol events generated in the line cards to PIM.
- Provides an MFIB platform application program interface (API) to propagate MFIB changes to platform-specific code responsible for programming the hardware acceleration engine. This API also includes entry points to switch a packet in software (necessary if the packet is triggering a data-driven event) and to upload traffic statistics to the software.

The combination of MFIB and MRIB subsystems also allows the switch to have a "customized" copy of the MFIB database in each line card and to transport MFIB-related platform-specific information from the RP to the line cards.

IPv6 Multicast VRF Lite



Note The switch must be running the Network Advantage license to support IPv6 Multicast VRF lite.

The IPv6 Multicast VRF Lite feature provides IPv6 multicast support for multiple virtual routing/forwarding contexts (VRFs). The scope of these VRFs is limited to the device in which the VRFs are defined.

This feature provides separation between routing and forwarding, providing an additional level of security because no communication between devices belonging to different VRFs is allowed unless it is explicitly configured. The IPv6 Multicast VRF Lite feature simplifies the management and troubleshooting of traffic belonging to a specific VRF.

IPv6 Multicast Process Switching and Fast Switching

A unified MFIB is used to provide both fast switching and process switching support for PIM-SM and PIM-SSM in IPv6 multicast. In process switching, the switch must examine, rewrite, and forward each packet. The packet is first received and copied into the system memory. The switch then looks up the Layer 3 network address in the routing table. The Layer 2 frame is then rewritten with the next-hop destination address and sent to the outgoing interface. The switch also computes the cyclic redundancy check (CRC). This switching method is the least scalable method for switching IPv6 packets.

IPv6 multicast fast switching allows switches to provide better packet forwarding performance than process switching. Information conventionally stored in a route cache is stored in several data structures for IPv6 multicast switching. The data structures provide optimized lookup for efficient packet forwarding.

In IPv6 multicast forwarding, the first packet is fast-switched if the PIM protocol logic allows it. In IPv6 multicast fast switching, the MAC encapsulation header is precomputed. IPv6 multicast fast switching uses the MFIB to make IPv6 destination prefix-based switching decisions. In addition to the MFIB, IPv6 multicast fast switching uses adjacency tables to prepend Layer 2 addressing information. The adjacency table maintains Layer 2 next-hop addresses for all MFIB entries.

The adjacency table is populated as adjacencies are discovered. Each time an adjacency entry is created (such as through ARP), a link-layer header for that adjacent node is precomputed and stored in the adjacency table. Once a route is determined, it points to a next hop and corresponding adjacency entry. It is subsequently used for encapsulation during switching of packets.

A route might have several paths to a destination prefix, such as when a switch is configured for simultaneous load balancing and redundancy. For each resolved path, a pointer is added for the adjacency corresponding to the next-hop interface for that path. This mechanism is used for load balancing across several paths.

NSF and SSO Support In IPv6 Multicast

The switch running the Network Advantage license supports Non Stop Forwarding (NSF) and Stateful Switch Over (SSO) in IPv6.

For more information, see *Configuring NSF with SSO* topic in *Stack Manager and High Availability Configuration Guide* section.

NTP in IPv6

The Network Time Protocol (NTP) is a protocol designed to time-synchronize a network of machines. NTP runs over UDP, which in turn runs over IPv4. NTP Version 4 (NTPv4) is an extension of NTP version 3, which supports both IPv4 and IPv6.

For more information, see *Cisco IOS IPv6 Configuration Library* on Cisco.com.

Implementing IPv6 Multicast

Enabling IPv6 Multicast Routing

To enable IPv6 multicast routing, perform this procedure:

Procedure

	Command or Action	Purpose
Step 1	enable Example: Device> enable	Enables privileged EXEC mode. Enter your password if prompted.
Step 2	configure terminal Example: Device# configure terminal	Enter global configuration mode.
Step 3	ipv6 multicast-routing Example: Device(config)# ipv6 multicast-routing	Enables multicast routing on all IPv6-enabled interfaces and enables multicast forwarding for PIM and MLD on all enabled interfaces of the switch.
Step 4	copy running-config startup-config Example: Device(config)# copy running-config startup-config	(Optional) Save your entries in the configuration file.

Customizing and Verifying the MLD Protocol

Customizing and Verifying MLD on an Interface

To customize and verify MLD on an interface, perform this procedure:

Procedure

	Command or Action	Purpose
Step 1	enable Example: Device> enable	Enables privileged EXEC mode. Enter your password if prompted.
Step 2	configure terminal Example: Device# configure terminal	Enters global configuration mode.
Step 3	interface <i>type number</i> Example: Device (config)# interface GigabitEthernet 1/0/1	Specifies an interface type and number, and places the switch in interface configuration mode.
Step 4	ipv6 mld join-group [<i>group-address</i>] [include exclude] { <i>source-address</i> source-list [<i>acl</i>] } Example: Device (config-if)# ipv6 mld join-group FF04::10	Configures MLD reporting for a specified group and source.
Step 5	ipv6 mld access-group <i>access-list-name</i> Example: Device (config-if)# ipv6 access-list acc-grp-1	Allows the user to perform IPv6 multicast receiver access control.
Step 6	ipv6 mld static-group [<i>group-address</i>] [include exclude] { <i>source-address</i> source-list [<i>acl</i>] } Example: Device (config-if)# ipv6 mld static-group ff04::10 include 100::1	Statically forwards traffic for the multicast group onto a specified interface and cause the interface to behave as if a MLD joiner were present on the interface.
Step 7	ipv6 mld query-max-response-time <i>seconds</i> Example:	Configures the timeout value before the switch takes over as the querier for the interface.

	Command or Action	Purpose
	Device(config-if)# ipv6 mld query-timeout 130	
Step 8	exit Example: Device(config-if)# exit	Enter this command twice to exit interface configuration mode and enter privileged EXEC mode.
Step 9	show ipv6 mld groups [link-local] [group-name group-address] [interface-type interface-number] [detail explicit] Example: Device# show ipv6 mld groups GigabitEthernet 1/0/1	Displays the multicast groups that are directly connected to the switch and that were learned through MLD.
Step 10	show ipv6 mld groups summary Example: Device# show ipv6 mld groups summary	Displays the number of (*, G) and (S, G) membership reports present in the MLD cache.
Step 11	show ipv6 mld interface [type number] Example: Device# show ipv6 mld interface GigabitEthernet 1/0/1	Displays multicast-related information about an interface.
Step 12	debug ipv6 mld [group-name group-address interface-type] Example: Device# debug ipv6 mld	Enables debugging on MLD protocol activity.
Step 13	debug ipv6 mld explicit [group-name group-address] Example: Device# debug ipv6 mld explicit	Displays information related to the explicit tracking of hosts.
Step 14	copy running-config startup-config	(Optional) Save your entries in the configuration file.

Implementing MLD Group Limits

Per-interface and global MLD limits operate independently of each other. Both per-interface and global MLD limits can be configured on the same switch. The number of MLD limits, globally or per interface, is not configured by default; the limits must be configured by the user. A membership report that exceeds either the per-interface or the global state limit is ignored.

Implementing MLD Group Limits Globally

To implement MLD group limits globally, perform this procedure:

Procedure

	Command or Action	Purpose
Step 1	enable Example: Device> enable	Enables privileged EXEC mode. Enter your password if prompted.
Step 2	configure terminal Example: Device# configure terminal	Enters global configuration mode.
Step 3	ipv6 mld [<i>vrf vrf-name</i>] state-limit <i>number</i> Example: Device(config)# ipv6 mld state-limit 300	Limits the number of MLD states globally.
Step 4	copy running-config startup-config	(Optional) Save your entries in the configuration file.

Implementing MLD Group Limits per Interface

To implement MLD group limits per interface, perform this procedure:

Procedure

	Command or Action	Purpose
Step 1	enable Example: Device> enable	Enables privileged EXEC mode. Enter your password if prompted.
Step 2	configure terminal Example: Device# configure terminal	Enters global configuration mode.
Step 3	interface type <i>number</i> Example: Device(config)# interface GigabitEthernet 1/0/1	Specifies an interface type and number, and places the switch in interface configuration mode.

	Command or Action	Purpose
Step 4	ipv6 mld limit <i>number</i> [except] <i>access-list</i> Example: Device(config-if)# ipv6 mld limit 100	Limits the number of MLD states on a per-interface basis.
Step 5	copy running-config startup-config	(Optional) Save your entries in the configuration file.

Configuring Explicit Tracking of Receivers to Track Host Behavior

The explicit tracking feature allows a switch to track the behavior of the hosts within its IPv6 network and enables the fast leave mechanism to be used with MLD version 2 host reports.

To configuring explicit tracking of receivers to track host behavior, perform this procedure:

Procedure

	Command or Action	Purpose
Step 1	enable Example: Device> enable	Enables privileged EXEC mode. Enter your password if prompted.
Step 2	configure terminal Example: Device# configure terminal	Enter global configuration mode.
Step 3	interface <i>type number</i> Example: Device(config)# interface GigabitEthernet 1/0/1	Specifies an interface type and number, and places the switch in interface configuration mode.
Step 4	ipv6 mld explicit-tracking <i>access-list-name</i> Example: Device(config-if)# ipv6 mld explicit-tracking list1	Enables explicit tracking of hosts.
Step 5	copy running-config startup-config	(Optional) Save your entries in the configuration file.

Resetting the MLD Traffic Counters

To reset the MLD traffic counters, perform this procedure:

Procedure

	Command or Action	Purpose
Step 1	enable Example: Device> <code>enable</code>	Enables privileged EXEC mode. Enter your password if prompted.
Step 2	configure terminal Example: Device# <code>configure terminal</code>	Enters global configuration mode.
Step 3	clear ipv6 mld traffic Example: Device# <code>clear ipv6 mld traffic</code>	Resets all MLD traffic counters.
Step 4	show ipv6 mld traffic Example: Device# <code>show ipv6 mld traffic</code>	Displays the MLD traffic counters.
Step 5	copy running-config startup-config	(Optional) Save your entries in the configuration file.

Clearing the MLD Interface Counters

To clearing the MLD interface counters, perform this procedure

Procedure

	Command or Action	Purpose
Step 1	enable Example: Device> <code>enable</code>	Enables privileged EXEC mode. Enter your password if prompted.
Step 2	configure terminal Example: Device# <code>configure terminal</code>	Enters global configuration mode.
Step 3	clear ipv6 mld counters <i>interface-type</i> Example:	Clears the MLD interface counters.

	Command or Action	Purpose
	Device# <code>clear ipv6 mld counters Ethernet1/0</code>	
Step 4	copy running-config startup-config	(Optional) Save your entries in the configuration file.

Configuring PIM

This section explains how to configure PIM.

Configuring PIM-SM and Displaying PIM-SM Information for a Group Range

To configuring PIM-SM and view PIM-SM information for a group range, perform this procedure:

Procedure

	Command or Action	Purpose
Step 1	enable Example: Device> <code>enable</code>	Enables privileged EXEC mode. Enter your password if prompted.
Step 2	configure terminal Example: Device# <code>configure terminal</code>	Enters global configuration mode.
Step 3	ipv6 pim rp-address <i>ipv6-address[group-access-list]</i> Example: Device(config)# <code>ipv6 pim rp-address 2001:DB8::01:800:200E:8C6C acc-grp-1</code>	Configures the address of a PIM RP for a particular group range.
Step 4	exit Example: Device(config)# <code>exit</code>	Exits global configuration mode, and returns the switch to privileged EXEC mode.
Step 5	show ipv6 pim interface [state-on] [state-off] [type-number] Example: Device# <code>show ipv6 pim interface</code>	Displays information about interfaces configured for PIM.

	Command or Action	Purpose
Step 6	show ipv6 pim group-map [<i>group-name</i> <i>group-address</i>] [<i>group-range</i> <i>group-mask</i>] [<i>info-source</i> { <i>bsr</i> default embedded-rp static }] Example: Device# show ipv6 pim group-map	Displays an IPv6 multicast group mapping table.
Step 7	show ipv6 pim neighbor [detail] [<i>interface-type</i> <i>interface-number</i> count] Example: Device# show ipv6 pim neighbor	Displays the PIM neighbors discovered by the Cisco IOS software.
Step 8	show ipv6 pim range-list [config] [<i>rp-address</i> <i>rp-name</i>] Example: Device# show ipv6 pim range-list	Displays information about IPv6 multicast range lists.
Step 9	show ipv6 pim tunnel [<i>interface-type</i> <i>interface-number</i>] Example: Device# show ipv6 pim tunnel	Displays information about the PIM register encapsulation and de-encapsulation tunnels on an interface.
Step 10	debug ipv6 pim [<i>group-name</i> <i>group-address</i> interface <i>interface-type</i> bsr group mvpn neighbor] Example: Device# debug ipv6 pim	Enables debugging on PIM protocol activity.
Step 11	copy running-config startup-config	(Optional) Save your entries in the configuration file.

Configuring PIM Options

To configure PIM options, perform this procedure:

Procedure

	Command or Action	Purpose
Step 1	enable Example: Device> enable	Enables privileged EXEC mode. Enter your password if prompted.

	Command or Action	Purpose
Step 2	configure terminal Example: Device# configure terminal	Enters global configuration mode.
Step 3	ipv6 pim spt-threshold infinity [group-list access-list-name] Example: Device(config)# ipv6 pim spt-threshold infinity group-list acc-grp-1	Configures when a PIM leaf switch joins the SPT for the specified groups.
Step 4	ipv6 pim accept-register {list access-list route-map map-name} Example: Device(config)# ipv6 pim accept-register route-map reg-filter	Accepts or rejects registers at the RP.
Step 5	interface type number Example: Device(config)# interface GigabitEthernet 1/0/1	Specifies an interface type and number, and places the switch in interface configuration mode.
Step 6	ipv6 pim dr-priority value Example: Device(config-if)# ipv6 pim dr-priority 3	Configures the DR priority on a PIM switch.
Step 7	ipv6 pim hello-interval seconds Example: Device(config-if)# ipv6 pim hello-interval 45	Configures the frequency of PIM hello messages on an interface.
Step 8	ipv6 pim join-prune-interval seconds Example: Device(config-if)# ipv6 pim join-prune-interval 75	Configures periodic join and prune announcement intervals for a specified interface.
Step 9	exit Example: Device(config-if)# exit	Enter this command twice to exit interface configuration mode and enter privileged EXEC mode.

	Command or Action	Purpose
Step 10	ipv6 pim join-prune statistic [<i>interface-type</i>] Example: Device(config-if)# show ipv6 pim join-prune statistic	Displays the average join-prune aggregation for the most recently aggregated packets for each interface.
Step 11	copy running-config startup-config	(Optional) Save your entries in the configuration file.

Resetting the PIM Traffic Counters

If PIM malfunctions or in order to verify that the expected number of PIM packets are received and sent, the user can clear PIM traffic counters. Once the traffic counters are cleared, the user can enter the `show ipv6 pim traffic` command to verify that PIM is functioning correctly and that PIM packets are being received and sent correctly.

To resetting the PIM traffic counters, perform this procedure:

Procedure

	Command or Action	Purpose
Step 1	enable Example: Device> enable	Enables privileged EXEC mode. Enter your password if prompted.
Step 2	configure terminal Example: Device# configure terminal	Enters global configuration mode.
Step 3	clear ipv6 pim traffic Example: Device# clear ipv6 pim traffic	Resets the PIM traffic counters.
Step 4	show ipv6 pim traffic Example: Device# show ipv6 pim traffic	Displays the PIM traffic counters.
Step 5	copy running-config startup-config	(Optional) Save your entries in the configuration file.

Clearing the PIM Topology Table to Reset the MRIB Connection

No configuration is necessary to use the MRIB. However, users may in certain situations want to clear the PIM topology table in order to reset the MRIB connection and verify MRIB information.

To clear the PIM topology table to reset the MRIB connection, perform this procedure:

Procedure

	Command or Action	Purpose
Step 1	enable Example: Device> enable	Enables privileged EXEC mode. Enter your password if prompted.
Step 2	configure terminal Example: Device# configure terminal	Enters global configuration mode.
Step 3	clear ipv6 pim topology [<i>group-name</i> <i>group-address</i>] Example: Device# clear ipv6 pim topology FF04::10	Clears the PIM topology table.
Step 4	show ipv6 mrib client [<i>filter</i>] [<i>name {client-name client-name : client-id}</i>] Example: Device# show ipv6 mrib client	Displays multicast-related information about an interface.
Step 5	show ipv6 mrib route { <i>link-local</i> <i>summary</i> } [<i>sourceaddress-or-name</i> *] [<i>groupname-or-address</i> [<i>prefix-length</i>]] Example: Device# show ipv6 mrib route	Displays the MRIB route information.
Step 6	show ipv6 pim topology [<i>groupname-or-address</i> [<i>sourceaddress-or-name</i>] <i>link-local</i> <i>route-count</i> [<i>detail</i>]] Example: Device# show ipv6 pim topology	Displays PIM topology table information for a specific group or all groups.

	Command or Action	Purpose
Step 7	debug ipv6 mrib client Example: Device# <code>debug ipv6 mrib client</code>	Enables debugging on MRIB client management activity.
Step 8	debug ipv6 mrib io Example: Device# <code>debug ipv6 mrib io</code>	Enables debugging on MRIB I/O events.
Step 9	debug ipv6 mrib proxy Example: Device# <code>debug ipv6 mrib proxy</code>	Enables debugging on MRIB proxy activity between the switch processor and line cards on distributed switch platforms.
Step 10	debug ipv6 mrib route [<i>group-name</i> <i>group-address</i>] Example: Device# <code>debug ipv6 mrib route</code>	Displays information about MRIB routing entry-related activity.
Step 11	debug ipv6 mrib table Example: Device# <code>debug ipv6 mrib table</code>	Enables debugging on MRIB table management activity.
Step 12	copy running-config startup-config	(Optional) Save your entries in the configuration file.

Configuring PIM IPv6 Stub Routing

The PIM Stub routing feature supports multicast routing between the distribution layer and the access layer. It supports two types of PIM interfaces, uplink PIM interfaces, and PIM passive interfaces. A routed interface configured with the PIM passive mode does not pass or forward PIM control traffic, it only passes and forwards MLD traffic.

PIM IPv6 Stub Routing Configuration Guidelines

- Before configuring PIM stub routing, you must have IPv6 multicast routing configured on both the stub router and the central router. You must also have PIM mode (sparse-mode) configured on the uplink interface of the stub router.
- The PIM stub router does not route the transit traffic between the distribution routers. Unicast (EIGRP) stub routing enforces this behavior. You must configure unicast stub routing to assist the PIM stub router behavior. For more information, see the *EIGRP Stub Routing* section.
- Only directly connected multicast (MLD) receivers and sources are allowed in the Layer 2 access domains. The PIM protocol is not supported in access domains.
- The redundant PIM stub router topology is not supported.

Default IPv6 PIM Routing Configuration

This table displays the default IPv6 PIM routing configuration for the Device.

Table 1: Default Multicast Routing Configuration

Feature	Default Setting
Multicast routing	Disabled on all interfaces.
PIM version	Version 2.
PIM mode	No mode is defined.
PIM stub routing	None configured.
PIM RP address	None configured.
PIM domain border	Disabled.
PIM multicast boundary	None.
Candidate BSRs	Disabled.
Candidate RPs	Disabled.
Shortest-path tree threshold rate	0 kb/s.
PIM router query message interval	30 seconds.

Enabling IPv6 PIM Stub Routing

To enable IPv6 PIM stub routing, perform this procedure:

Before you begin

PIM stub routing is disabled in IPv6 by default.

Procedure

	Command or Action	Purpose
Step 1	enable Example: Device> enable	Enables privileged EXEC mode. Enter your password if prompted.
Step 2	configure terminal Example: Device# configure terminal	Enters global configuration mode.

	Command or Action	Purpose
Step 3	ipv6 multicast pim-passive-enable Example: <pre>Device(config-if)# ipv6 multicast pim-passive-enable</pre>	Enables IPv6 Multicast PIM routing on the switch.
Step 4	interface interface-id Example: <pre>Device(config)# interface gigabitethernet 9/0/6</pre>	<p>Specifies the interface on which you want to enable PIM stub routing, and enters interface configuration mode.</p> <p>The specified interface must be one of the following:</p> <ul style="list-style-type: none"> • A routed port—A physical port that has been configured as a Layer 3 port by entering the no switchport interface configuration command. You will also need to enable IP PIM sparse mode on the interface, and join the interface as a statically connected member to an MLD static group. • An SVI—A VLAN interface created by using the interface vlan vlan-id global configuration command. You will also need to enable IP PIM sparse mode on the VLAN, join the VLAN as a statically connected member to an MLD static group, and then enable MLD snooping on the VLAN, the MLD static group, and physical interface. <p>These interfaces must have IPv6 addresses assigned to them.</p>
Step 5	ipv6 pim Example: <pre>Device(config-if)# ipv6 pim</pre>	Enables the PIM on the interface.
Step 6	ipv6 pim {bsr} {dr-priority value} {hello-interval seconds} {join-prune-interval seconds} {passive} Example: <pre>Device(config-if)# ipv6 pim bsr dr-priority hello-interval join-prune-interval passive</pre>	<p>Configures the various PIM stub features on the interface.</p> <p>Enter bsr to configure BSR on a PIM switch</p> <p>Enter dr-priority to configure the DR priority on a PIM switch.</p> <p>Enter hello-interval to configure the frequency of PIM hello messages on an interface.</p>

	Command or Action	Purpose
		Enter join-prune-interval to configure periodic join and prune announcement intervals for a specified interface. Enter passive to configure the PIM in the passive mode.
Step 7	end Example: Device(config-if) # end	Returns to privileged EXEC mode.

Monitoring IPv6 PIM Stub Routing

Table 2: PIM Stub Configuration show Commands

Command	Purpose
show ipv6 pim interface	Displays the PIM stub that is enabled on each interface.
show ipv6 mld groups	Displays the interested clients that have joined the specific multicast source group.
show ipv6 mroute	Verifies that the multicast stream forwards from the source to the interested clients.

Disabling Embedded RP Support in IPv6 PIM

A user might want to disable embedded RP support on an interface if all of the devices in the domain do not support embedded RP.



Note This task disables PIM completely, not just embedded RP support in IPv6 PIM.

To disabling embedded RP support in IPv6 PIM, perform this procedure:

Procedure

	Command or Action	Purpose
Step 1	enable Example: Device> enable	Enables privileged EXEC mode. Enter your password if prompted.
Step 2	configure terminal Example:	Enters global configuration mode.

	Command or Action	Purpose
	Device# <code>configure terminal</code>	
Step 3	no ipv6 pim [vrf vrf-name] rp embedded Example: Device(config)# <code>no ipv6 pim rp embedded</code>	Disables embedded RP support in IPv6 PIM.
Step 4	interface type number Example: Device(config)# <code>interface FastEthernet 1/0</code>	Specifies an interface type and number, and places the device in interface configuration mode.
Step 5	no ipv6 pim Example: Device(config-if)# <code>no ipv6 pim</code>	Turns off IPv6 PIM on a specified interface.

Configuring a BSR

The tasks included here are described below.

Configuring a BSR and Verifying BSR Information

To configure and verify BSR Information, perform this procedure:

Procedure

	Command or Action	Purpose
Step 1	enable Example: Device> <code>enable</code>	Enables privileged EXEC mode. Enter your password if prompted.
Step 2	configure terminal Example: Device# <code>configure terminal</code>	Enters global configuration mode.
Step 3	ipv6 pim bsr candidate bsr <i>ipv6-address[hash-mask-length] [priority</i> <i>priority-value]</i> Example:	Configures a switch to be a candidate BSR.

	Command or Action	Purpose
	Device(config)# ipv6 pim bsr candidate bsr 2001:DB8:3000:3000::42 124 priority 10	
Step 4	interface <i>type number</i> Example: Device(config)# interface GigabitEthernet 1/0/1	Specifies an interface type and number, and places the switch in interface configuration mode.
Step 5	ipv6 pim bsr border Example: Device(config-if)# ipv6 pim bsr border	Specifies an interface type and number, and places the switch in interface configuration mode.
Step 6	exit Example: Device(config-if)# exit	Enter this command twice to exit interface configuration mode and enter privileged EXEC mode.
Step 7	show ipv6 pim bsr {election rp-cache candidate-rp} Example: Device(config-if)# show ipv6 pim bsr election	Displays information related to PIM BSR protocol processing.
Step 8	copy running-config startup-config	(Optional) Save your entries in the configuration file.

Sending PIM RP Advertisements to the BSR

To sending PIM RP advertisements to the BSR, perform this procedure:

Procedure

	Command or Action	Purpose
Step 1	enable Example: Device> enable	Enables privileged EXEC mode. Enter your password if prompted.
Step 2	configure terminal Example: Device# configure terminal	Enters global configuration mode.

	Command or Action	Purpose
Step 3	ipv6 pim bsr candidate rp <i>ipv6-address</i> [group-list <i>access-list-name</i>] [priority <i>priority-value</i>] [interval seconds] Example: Device(config)# ipv6 pim bsr candidate rp 2001:DB8:3000:3000::42 priority 0	Sends PIM RP advertisements to the BSR.
Step 4	interface <i>type number</i> Example: Device(config)# interface GigabitEthernet 1/0/1	Specifies an interface type and number, and places the switch in interface configuration mode.
Step 5	ipv6 pim bsr border Example: Device(config-if)# ipv6 pim bsr border	Configures a border for all BSMs of any scope on a specified interface.
Step 6	copy running-config startup-config	(Optional) Save your entries in the configuration file.

Configuring BSR for Use Within Scoped Zones

To configure BSR for use within scoped zones, perform this procedure:

Procedure

	Command or Action	Purpose
Step 1	enable Example: Device> enable	Enables privileged EXEC mode. Enter your password if prompted.
Step 2	configure terminal Example: Device# configure terminal	Enters global configuration mode.
Step 3	ipv6 pim bsr candidate rp <i>ipv6-address</i> [<i>hash-mask-length</i>] [priority <i>priority-value</i>] Example: Device(config)# ipv6 pim bsr candidate bsr 2001:DB8:1:1:4	Configures a switch to be a candidate BSR.

	Command or Action	Purpose
Step 4	ipv6 pim bsr candidate rp <i>ipv6-address</i> [group-list <i>access-list-name</i>] [priority <i>priority-value</i>] [interval seconds] Example: Device(config)# ipv6 pim bsr candidate rp 2001:DB8:1:1:1 group-list list scope 6	Configures the candidate RP to send PIM RP advertisements to the BSR.
Step 5	interface <i>type number</i> Example: Device(config-if)# interface GigabitEthernet 1/0/1	Specifies an interface type and number, and places the switch in interface configuration mode.
Step 6	ipv6 multicast boundary scope <i>scope-value</i> Example: Device(config-if)# ipv6 multicast boundary scope 6	Configures a multicast boundary on the interface for a specified scope.
Step 7	copy running-config startup-config	(Optional) Save your entries in the configuration file.

Configuring BSR Switches to Announce Scope-to-RP Mappings

IPv6 BSR switches can be statically configured to announce scope-to-RP mappings directly instead of learning them from candidate-RP messages. A user might want to configure a BSR switch to announce scope-to-RP mappings so that an RP that does not support BSR is imported into the BSR. Enabling this feature also allows an RP positioned outside the enterprise's BSR domain to be learned by the known remote RP on the local candidate BSR switch.

To configure BSR switches to announce Scope-to-RP mappings, perform this procedure:

Procedure

	Command or Action	Purpose
Step 1	enable Example: Device> enable	Enables privileged EXEC mode. Enter your password if prompted.
Step 2	configure terminal Example: Device# configure terminal	Enters global configuration mode.

	Command or Action	Purpose
Step 3	ipv6 pim bsr announced rp <i>ipv6-address</i> [group-list <i>access-list-name</i>] [priority <i>priority-value</i>] Example: <pre>Device(config)# ipv6 pim bsr announced rp 2001:DB8:3000:3000::42 priority 0</pre>	Announces scope-to-RP mappings directly from the BSR for the specified candidate RP.
Step 4	copy running-config startup-config	(Optional) Save your entries in the configuration file.

Configuring SSM Mapping

When the SSM mapping feature is enabled, DNS-based SSM mapping is automatically enabled, which means that the switch will look up the source of a multicast MLD version 1 report from a DNS server.

You can use either DNS-based or static SSM mapping, depending on your switch configuration. If you choose to use static SSM mapping, you can configure multiple static SSM mappings. If multiple static SSM mappings are configured, the source addresses of all matching access lists will be used.



Note To use DNS-based SSM mapping, the switch needs to find at least one correctly configured DNS server, to which the switch may be directly attached.

To configuring SSM mapping, perform this procedure:

Procedure

	Command or Action	Purpose
Step 1	enable Example: <pre>Device> enable</pre>	Enables privileged EXEC mode. Enter your password if prompted.
Step 2	configure terminal Example: <pre>Device# configure terminal</pre>	Enters global configuration mode.
Step 3	ipv6 mld ssm-map enable Example: <pre>Device(config)# ipv6 mld ssm-map enable</pre>	Enables the SSM mapping feature for groups in the configured SSM range.

	Command or Action	Purpose
Step 4	no ipv6 mld ssm-map query dns Example: Device(config)# no ipv6 mld ssm-map query dns	Disables DNS-based SSM mapping.
Step 5	ipv6 mld ssm-map static <i>access-list source-address</i> Example: Device(config-if)# ipv6 mld ssm-map static SSM_MAP_ACL_2 2001:DB8:1::1	Configures static SSM mappings.
Step 6	exit Example: Device(config-if)# exit	Exits global configuration mode, and returns the switch to privileged EXEC mode.
Step 7	show ipv6 mld ssm-map [<i>source-address</i>] Example: Device(config-if)# show ipv6 mld ssm-map	Displays SSM mapping information.
Step 8	copy running-config startup-config	(Optional) Save your entries in the configuration file.

Configuring Static Mroutes

Static multicast routes (mroutes) in IPv6 can be implemented as an extension of IPv6 static routes. You can configure your switch to use a static route for unicast routing only, to use a static multicast route for multicast RPF selection only, or to use a static route for both unicast routing and multicast RPF selection.

To configure static mroutes, perform this procedure:

Procedure

	Command or Action	Purpose
Step 1	enable Example: Device> enable	Enables privileged EXEC mode. Enter your password if prompted.
Step 2	configure terminal Example:	Enters global configuration mode.

	Command or Action	Purpose
	Device# <code>configure terminal</code>	
Step 3	<p><code>ipv6 route {ipv6-prefix / prefix-length ipv6-address interface-type interface-number ipv6-address} [administrative-distance] [administrative-multicast-distance unicast multicast] [tag tag]</code></p> <p>Example:</p> <pre>Device(config)# ipv6 route 2001:DB8::/64 6::6 100</pre>	Establishes static IPv6 routes. The example shows a static route used for both unicast routing and multicast RPF selection.
Step 4	<p><code>exit</code></p> <p>Example:</p> <pre>Device# exit</pre>	Exits global configuration mode, and returns the switch to privileged EXEC mode.
Step 5	<p><code>show ipv6 mroute [link-local [group-name group-address [source-address source-name]] [summary] [count]</code></p> <p>Example:</p> <pre>Device# show ipv6 mroute ff07::1</pre>	Displays the contents of the IPv6 multicast routing table.
Step 6	<p><code>show ipv6 mroute [link-local group-name group-address] active [kbps]</code></p> <p>Example:</p> <pre>Device(config-if)# show ipv6 mroute active</pre>	Displays the active multicast streams on the switch.
Step 7	<p><code>show ipv6 rpf [ipv6-prefix]</code></p> <p>Example:</p> <pre>Device(config-if)# show ipv6 rpf 2001::1:1:2</pre>	Checks RPF information for a given unicast host address and prefix.
Step 8	<code>copy running-config startup-config</code>	(Optional) Save your entries in the configuration file.

Using MFIB in IPv6 Multicast

Multicast forwarding is automatically enabled when IPv6 multicast routing is enabled.

Verifying MFIB Operation in IPv6 Multicast

To verify MFIB operation in IPv6 multicast

Procedure

	Command or Action	Purpose
Step 1	enable Example: Device> enable	Enables privileged EXEC mode. Enter your password if prompted.
Step 2	show ipv6 mfib [verbose <i>group-address-name</i> <i>ipv6-prefix/prefix-length</i> <i>source-address-name</i> count interface status summary] Example: Device# show ipv6 mfib	Displays the forwarding entries and interfaces in the IPv6 MFIB.
Step 3	show ipv6 mfib [all linkscope group-name group-address [source-name source-address]] count Example: Device# show ipv6 mfib ff07::1	Displays the contents of the IPv6 multicast routing table.
Step 4	show ipv6 mfib interface Example: Device# show ipv6 mfib interface	Displays information about IPv6 multicast-enabled interfaces and their forwarding status.
Step 5	show ipv6 mfib status Example: Device# show ipv6 mfib status	Displays general MFIB configuration and operational status.
Step 6	show ipv6 mfib summary Example: Device# show ipv6 mfib summary	Displays summary information about the number of IPv6 MFIB entries and interfaces.
Step 7	debug ipv6 mfib [<i>group-name</i> <i>group-address</i>] [adjacency db fs init interface mrrib [detail] nat pak platform ppr ps signal table] Example: Device# debug ipv6 mfib FF04::10 pak	Enables debugging output on the IPv6 MFIB.

Resetting MFIB Traffic Counters

To reset MFIB traffic counters, perform this procedure:

Procedure

	Command or Action	Purpose
Step 1	enable Example: Device> enable	Enables privileged EXEC mode. Enter your password if prompted.
Step 2	clear ipv6 mfib counters [<i>group-name</i> group-address [<i>source-address</i> <i>source-name</i>]] Example: Device# clear ipv6 mfib counters FF04::10	Resets all active MFIB traffic counters.

Additional References

Standards and RFCs

Standard/RFC	Title
RFC 4292	<i>IP Forwarding Table</i>
RFC 4293	<i>Management Information Base for the Internet Protocol (IP)</i>

Feature History for IPv6 Multicast

This table provides release and related information for the features explained in this module.

These features are available in all the releases subsequent to the one they were introduced in, unless noted otherwise.

Release	Feature	Feature Information
Cisco IOS XE Fuji 16.9.2	IPv6 multicast	IPv6 multicast allows a host to send a single data stream to a subset of all hosts (group transmission) simultaneously

Use the Cisco Feature Navigator to find information about platform and software image support. To access Cisco Feature Navigator, go to <http://www.cisco.com/go/cfn>.