



# Configuring BFD-EIGRP Support

---

- [BFD - EIGRP Support, on page 1](#)

## BFD - EIGRP Support

The BFD-EIGRP Support feature configures the Enhanced Interior Gateway Routing Protocol (EIGRP) with Bidirectional Forwarding Detection (BFD) so that EIGRP registers with BFD and receives all forwarding path detection failure messages from BFD.

## Prerequisites for BFD-EIGRP Support

- Enhanced Interior Gateway Routing Protocol (EIGRP) must be running on all participating routers.
- The baseline parameters for Bidirectional Forwarding Detection (BFD) sessions on the interfaces over which you want to run BFD sessions to BFD neighbors must be configured using the **bfd** command.

## Information About BFD - EIGRP Support

### Overview of BFD-EIGRP Support

The BFD-EIGRP Support feature configures Bidirectional Forwarding Detection (BFD) feature for Enhanced Interior Gateway Routing Protocol (EIGRP) so that EIGRP registers with the BFD sessions on the routing interfaces, and receives forwarding path detection failure messages from BFD.

Use **bfd interval milliseconds min\_rx milliseconds multiplier interval-multiplier** command to enable BFD on any interface. Use the **bfd all-interfaces** command in router configuration mode to enable BFD for all of the interfaces where EIGRP routing is enabled. Use the **bfd interface type number** command in router configuration mode to enable BFD for a subset of the interfaces where EIGRP routing is enabled.

# How to Configure BFD - EIGRP Support

## How to Configure BFD - EIGRP Support

### Configuring BFD - EIGRP Support

#### Procedure

	Command or Action	Purpose
<b>Step 1</b>	<b>enable</b> <b>Example:</b> Device> <b>enable</b>	Enables privileged EXEC mode. <ul style="list-style-type: none"> <li>• Enter your password if prompted.</li> </ul>
<b>Step 2</b>	<b>configure terminal</b> <b>Example:</b> Device# <b>configure terminal</b>	Enters global configuration mode.
<b>Step 3</b>	<b>router eigrp as-number</b> <b>Example:</b> Device(config)# <b>router eigrp 123</b>	Configures the EIGRP routing process and enters router configuration mode.
<b>Step 4</b>	Do one of the following: <ul style="list-style-type: none"> <li>• <b>bfd all-interfaces</b></li> <li>• <b>bfd interface type number</b></li> </ul> <b>Example:</b> Device(config-router)# <b>bfd all-interfaces</b> <b>Example:</b> Device(config-router)# <b>bfd interface FastEthernet 6/0</b>	Enables BFD globally on all interfaces associated with the EIGRP routing process. or Enables BFD on a per-interface basis for one or more interfaces associated with the EIGRP routing process.
<b>Step 5</b>	<b>end</b> <b>Example:</b> Device(config-router)# <b>end</b>	Exits router configuration mode and returns the router to privileged EXEC mode.
<b>Step 6</b>	<b>show bfd neighbors [details]</b> <b>Example:</b> Device# <b>show bfd neighbors details</b>	(Optional) Verifies that the BFD neighbor is active and displays the routing protocols that BFD has registered.

	Command or Action	Purpose
<b>Step 7</b>	<b>show ip eigrp interfaces</b> <i>[type number]</i> <i>[as-number]</i> <i>[detail]</i>  <b>Example:</b>  Device# <code>show ip eigrp interfaces detail</code>	(Optional) Displays the interfaces for which BFD support for EIGRP has been enabled.

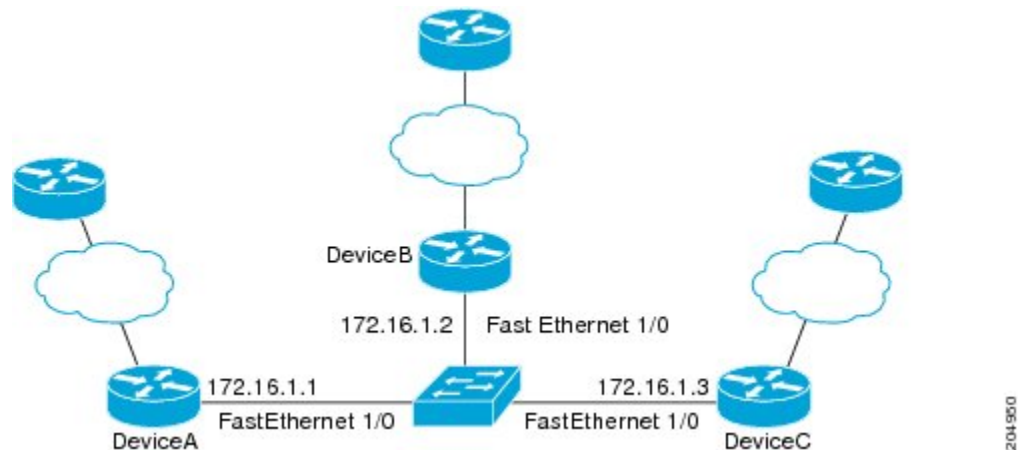
## Configuration Examples for BFD - EIGRP Support

### Example: Configuring BFD in an EIGRP Network with Echo Mode Enabled by Default

In the following example, the EIGRP network contains DeviceA, DeviceB, and DeviceC. Fast Ethernet interface 1/0 on DeviceA is connected to the same network as Fast Ethernet interface 1/0 on Device B. Fast Ethernet interface 1/0 on DeviceB is connected to the same network as Fast Ethernet interface 1/0 on DeviceC.

DeviceA and DeviceB are running BFD Version 1, which supports echo mode, and DeviceC is running BFD Version 0, which does not support echo mode. The BFD sessions between DeviceC and its BFD neighbors are said to be running echo mode with asymmetry because echo mode will run on the forwarding path for DeviceA and DeviceB, and their echo packets will return along the same path for BFD sessions and failure detections, while their BFD neighbor DeviceC runs BFD Version 0 and uses BFD controls packets for BFD sessions and failure detections.

The figure below shows a large EIGRP network with several devices, three of which are BFD neighbors that are running EIGRP as their routing protocol.



The example, starting in global configuration mode, shows the configuration of BFD.

#### Configuration for DeviceA

```
interface Fast Ethernet0/0
no shutdown
ip address 10.4.9.14 255.255.255.0
duplex auto
speed auto
!
interface Fast Ethernet1/0
```

**Example: Configuring BFD in an EIGRP Network with Echo Mode Enabled by Default**

```

ip address 172.16.1.1 255.255.255.0
bfd interval 50 min_rx 50 multiplier 3
no shutdown
duplex auto
speed auto
!
router eigrp 11
network 172.16.0.0
bfd all-interfaces
auto-summary
!
ip default-gateway 10.4.9.1
ip default-network 0.0.0.0
ip route 0.0.0.0 0.0.0.0 10.4.9.1
ip route 172.16.1.129 255.255.255.255 10.4.9.1
!
no ip http server
!
logging alarm informational
!
control-plane
!
line con 0
exec-timeout 30 0
stopbits 1
line aux 0
stopbits 1
line vty 0 4
login
!
!
end

```

**Configuration for DeviceB**

```

!
interface Fast Ethernet0/0
no shutdown
ip address 10.4.9.34 255.255.255.0
duplex auto
speed auto
!
interface Fast Ethernet1/0
ip address 172.16.1.2 255.255.255.0
bfd interval 50 min_rx 50 multiplier 3
no shtdown
duplex auto
speed auto
!
router eigrp 11
network 172.16.0.0
bfd all-interfaces
auto-summary
!
ip default-gateway 10.4.9.1
ip default-network 0.0.0.0
ip route 0.0.0.0 0.0.0.0 10.4.9.1
ip route 172.16.1.129 255.255.255.255 10.4.9.1
!
no ip http server
!
logging alarm informational
!

```

```

control-plane
!
line con 0
exec-timeout 30 0
stopbits 1
line aux 0
stopbits 1
line vty 0 4
login
!
!
end

```

### Configuration for DeviceC

```

!
!
interface Fast Ethernet0/0
no shutdown
ip address 10.4.9.34 255.255.255.0
duplex auto
speed auto
!
interface Fast Ethernet1/0
ip address 172.16.1.2 255.255.255.0
bfd interval 50 min_rx 50 multiplier 3
no shutdown
duplex auto
speed auto
!
router eigrp 11
network 172.16.0.0
bfd all-interfaces
auto-summary
!
ip default-gateway 10.4.9.1
ip default-network 0.0.0.0
ip route 0.0.0.0 0.0.0.0 10.4.9.1
ip route 172.16.1.129 255.255.255.255 10.4.9.1
!
no ip http server
!
logging alarm informational
!
control-plane
!
line con 0
exec-timeout 30 0
stopbits 1
line aux 0
stopbits 1
line vty 0 4
login
!
!
end

```

The output from the **show bfd neighbors details** command from DeviceA verifies that BFD sessions are created among all three devices and that EIGRP is registered for BFD support. The first group of output shows that DeviceC with the IP address 172.16.1.3 runs BFD Version 0 and therefore does not use the echo mode. The second group of output shows that DeviceB with the IP address 172.16.1.2 runs BFD Version 1, and the

50 millisecond BFD interval parameter had been adopted. The relevant command output is shown in bold in the output.

```
DeviceA# show bfd neighbors details
```

```

OurAddr
  NeighAddr
    LD/RD  RH/RS  Holdown(mult)  State  Int
172.16.1.1  172.16.1.3
    5/3    1(RH)    150 (3 )           Up    Fa1/0
Session state is UP and not using echo function.
Local Diag: 0, Demand mode: 0, Poll bit: 0
MinTxInt: 50000, MinRxInt: 50000, Multiplier: 3
Received MinRxInt: 50000, Received Multiplier: 3
Holdown (hits): 150(0), Hello (hits): 50(1364284)
Rx Count: 1351813, Rx Interval (ms) min/max/avg: 28/64/49 last: 4 ms ago
Tx Count: 1364289, Tx Interval (ms) min/max/avg: 40/68/49 last: 32 ms ago
Registered protocols: EIGRP
Uptime: 18:42:45
Last packet: Version: 0
  - Diagnostic: 0
    I Hear You bit: 1      - Demand bit: 0
    Poll bit: 0           - Final bit: 0
    Multiplier: 3         - Length: 24
    My Discr.: 3          - Your Discr.: 5
    Min tx interval: 50000 - Min rx interval: 50000
    Min Echo interval: 0

OurAddr      NeighAddr
  LD/RD  RH/RS  Holdown(mult)  State  Int
172.16.1.1  172.16.1.2

    6/1    Up      0    (3 )  Up      Fa1/0
Session state is UP and using echo function with 50 ms interval.
Local Diag: 0, Demand mode: 0, Poll bit: 0
MinTxInt: 1000000, MinRxInt: 1000000, Multiplier: 3
Received MinRxInt: 1000000, Received Multiplier: 3
Holdown (hits): 3000(0), Hello (hits): 1000(317)
Rx Count: 305, Rx Interval (ms) min/max/avg: 1/1016/887 last: 448 ms ago
Tx Count: 319, Tx Interval (ms) min/max/avg: 1/1008/880 last: 532 ms ago
Registered protocols: EIGRP
Uptime: 00:04:30
Last packet: Version: 1
  - Diagnostic: 0
    State bit: Up          - Demand bit: 0
    Poll bit: 0           - Final bit: 0
    Multiplier: 3         - Length: 24
    My Discr.: 1          - Your Discr.: 6
    Min tx interval: 1000000 - Min rx interval: 1000000
    Min Echo interval: 50000

```

The output from the **show bfd neighbors details** command on Device B verifies that BFD sessions have been created and that EIGRP is registered for BFD support. As previously noted, DeviceA runs BFD Version 1, therefore echo mode is running, and DeviceC runs BFD Version 0, so echo mode does not run. The relevant command output is shown in bold in the output.

```
DeviceB# show bfd neighbors details
```

```

OurAddr      NeighAddr

```

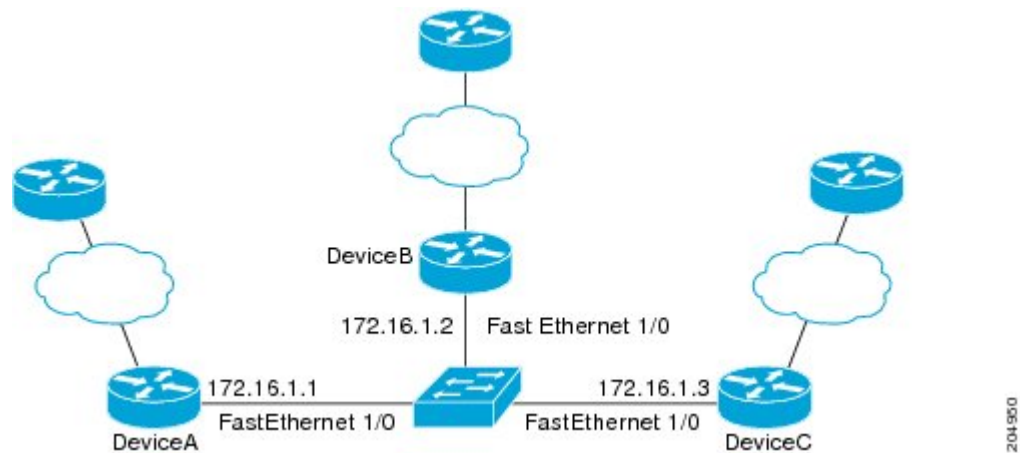
```

      LD/RD  RH/RS  Holdown(mult)  State  Int
172.16.1.2  172.16.1.1
      1/6    Up      0      (3 )  Up      Fa1/0
Session state is UP and using echo function with 50 ms interval.
Local Diag: 0, Demand mode: 0, Poll bit: 0
MinTxInt: 1000000, MinRxInt: 1000000, Multiplier: 3
Received MinRxInt: 1000000, Received Multiplier: 3
Holdown (hits): 3000(0), Hello (hits): 1000(337)
Rx Count: 341, Rx Interval (ms) min/max/avg: 1/1008/882 last: 364 ms ago
Tx Count: 339, Tx Interval (ms) min/max/avg: 1/1016/886 last: 632 ms ago
Registered protocols: EIGRP
Uptime: 00:05:00
Last packet: Version: 1
      - Diagnostic: 0
      State bit: Up           - Demand bit: 0
      Poll bit: 0           - Final bit: 0
      Multiplier: 3        - Length: 24
      My Discr.: 6         - Your Discr.: 1
      Min tx interval: 1000000 - Min rx interval: 1000000
      Min Echo interval: 50000
OurAddr      NeighAddr

      LD/RD  RH/RS  Holdown(mult)  State  Int
172.16.1.2  172.16.1.3
      3/6    1(RH)  118      (3 )  Up      Fa1/0
Session state is UP and not using echo function.
Local Diag: 0, Demand mode: 0, Poll bit: 0
MinTxInt: 50000, MinRxInt: 50000, Multiplier: 3
Received MinRxInt: 50000, Received Multiplier: 3
Holdown (hits): 150(0), Hello (hits): 50(5735)
Rx Count: 5731, Rx Interval (ms) min/max/avg: 32/72/49 last: 32 ms ago
Tx Count: 5740, Tx Interval (ms) min/max/avg: 40/64/50 last: 44 ms ago
Registered protocols: EIGRP
Uptime: 00:04:45
Last packet: Version: 0
      - Diagnostic: 0
      I Hear You bit: 1     - Demand bit: 0
      Poll bit: 0           - Final bit: 0
      Multiplier: 3        - Length: 24
      My Discr.: 6         - Your Discr.: 3
      Min tx interval: 50000 - Min rx interval: 50000
      Min Echo interval: 0

```

The figure below shows that Fast Ethernet interface 1/0 on DeviceB has failed. When Fast Ethernet interface 1/0 on DeviceB is shut down, the BFD statistics of the corresponding BFD sessions on DeviceA and DeviceB are reduced.



When Fast Ethernet interface 1/0 on DeviceB fails, BFD will no longer detect Device B as a BFD neighbor for DeviceA or for DeviceC. In this example, Fast Ethernet interface 1/0 has been administratively shut down on DeviceB.

The following output from the **show bfd neighbors** command on DeviceA now shows only one BFD neighbor for DeviceA in the EIGRP network. The relevant command output is shown in bold in the output.

```
DeviceA# show bfd neighbors
OurAddr      NeighAddr

  LD/RD  RH/RS  Holdown(mult)  State  Int
172.16.1.1  172.16.1.3

  5/3    1(RH)   134 (3 )  Up    Fa1/0
```

The following output from the **show bfd neighbors** command on DeviceC also now shows only one BFD neighbor for DeviceC in the EIGRP network. The relevant command output is shown in bold in the output.

```
DeviceC# show bfd neighbors

OurAddr      NeighAddr

  LD/RD  RH  Holdown(mult)  State  Int
172.16.1.3  172.16.1.1

  3/5    1   114 (3 )  Up    Fa1/0
```

## Additional References for BFD-EIGRP Support

### Related Documents

Related Topic	Document Title
For complete syntax and usage information for the commands used in this chapter.	See the <i>Command Reference (Catalyst 9200 Series Switches)</i>



## Feature Information for BFD-EIGRP Support

The following table provides release information about the feature or features described in this module. This table lists only the software release that introduced support for a given feature in a given software release train. Unless noted otherwise, subsequent releases of that software release train also support that feature.

*Table 1: Feature Information for BFD-EIGRP Support*

Feature Name	Releases	Feature Information
BFD-EIGRP Support	Cisco IOS XE Everest 16.6.2	<p>The BFD-EIGRP Support feature configures the Enhanced Interior Gateway Routing Protocol (EIGRP) with Bidirectional Forwarding Detection (BFD) so that EIGRP registers with BFD and receives all forwarding path detection failure messages from BFD.</p> <p>In Cisco IOS XE Everest 16.6.2, this feature was implemented on Cisco Catalyst 9400 Series Switches.</p>

