



# Configuring ERSPAN

---

- [Configuring ERSPAN, on page 1](#)

## Configuring ERSPAN

This module describes how to configure Encapsulated Remote Switched Port Analyzer (ERSPAN). The Cisco ERSPAN feature allows you to monitor traffic on ports or VLANs and send the monitored traffic to destination ports.

## Prerequisites for Configuring ERSPAN

- The ERSPAN feature requires IP routing to be enabled in the Global Configuration Mode.
- Only IPv4 delivery/transport header is supported.
- Access control list (ACL) filter is applied before sending the monitored traffic on to the tunnel.
- Only supports Type-II ERSPAN header.

## Restrictions for Configuring ERSPAN

The following restrictions apply for this feature:

- Destination sessions are not supported.
- A device supports up to 66 sessions. A maximum of 8 source sessions can be configured and the remaining sessions can be configured as RSPAN destinations sessions. A source session can be a local SPAN source session or an RSPAN source session or an ERSPAN source session.
- You can configure either a list of ports or a list of VLANs as a source, but cannot configure both for a given session.
- When a session is configured through the ERSPAN CLI, the session ID and the session type cannot be changed. To change them, you must use the no form of the configuration commands to remove the session and then reconfigure the session.
- ERSPAN source sessions do not copy locally-sourced Remote SPAN (RSPAN) VLAN traffic from source trunk ports that carry RSPAN VLANs.

- ERSPAN source sessions do not copy locally-sourced ERSPAN GRE-encapsulated traffic from source ports.

## Information for Configuring ERSPAN

### ERSPAN Overview

The Cisco ERSPAN feature allows you to monitor traffic on ports or VLANs, and send the monitored traffic to destination ports. ERSPAN sends traffic to a network analyzer, such as a Switch Probe device or a Remote Monitoring (RMON) probe. ERSPAN supports source ports, source VLANs, and destination ports on different devices, which helps remote monitoring of multiple devices across a network.

ERSPAN supports encapsulated packets of up to 9180 bytes. ERSPAN consists of an ERSPAN source session, routable ERSPAN GRE-encapsulated traffic, and an ERSPAN destination session.

ERSPAN consists of an ERSPAN source session, routable ERSPAN GRE-encapsulated traffic, and an ERSPAN destination session. You can configure an ERSPAN source session, an ERSPAN destination session, or both on a device. A device on which only an ERSPAN source session is configured is called an ERSPAN source device, and a device on which only an ERSPAN destination session is configured is called an ERSPAN termination device. A device can act as both; an ERSPAN source device and a termination device.

For a source port or a source VLAN, the ERSPAN can monitor the ingress, egress, or both ingress and egress traffic. By default, ERSPAN monitors all traffic, including multicast, and Bridge Protocol Data Unit (BPDU) frames.

An ERSPAN source session is defined by the following parameters:

- A session ID
- List of source ports or source VLANs to be monitored by the session
- The destination and origin IP addresses, which are used as the destination and source IP addresses of the generic routing encapsulation (GRE) envelope for the captured traffic, respectively
- ERSPAN flow ID
- Optional attributes, such as, IP Time to Live (TTL), related to the GRE envelope



---

**Note** ERSPAN source sessions do not copy ERSPAN GRE-encapsulated traffic from source ports. Each ERSPAN source session can have either ports or VLANs as sources, but not both.

---

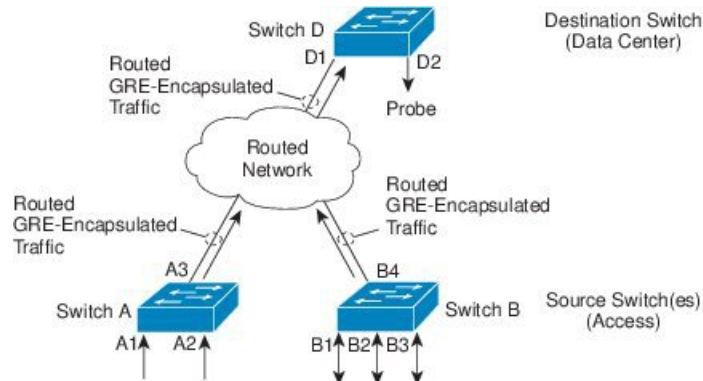


---

**Note** Because encapsulation is performed in the hardware, the CPU performance is not impacted.

---

Figure 1: ERSPAN Configuration



## ERSPAN Sources

The Cisco ERSPAN feature supports the following sources:

- Source ports—A source port that is monitored for traffic analysis. Source ports in any VLAN can be configured and trunk ports can be configured as source ports along with nontrunk source ports.
- Source VLANs—A VLAN that is monitored for traffic analysis.

The following interfaces are supported as source ports:

- GigabitEthernet
- PortChannel
- TenGigabitEthernet

## How to Configure ERSPAN

### Configuring an ERSPAN Source Session

The ERSPAN source session defines the session configuration parameters and the ports or VLANs to be monitored.

#### SUMMARY STEPS

1. **enable**
2. **configure terminal**
3. **monitor session** *span-session-number* **type erspan-source**
4. **description** *description*
5. **source** {**interface** *type number* | **vlan** *vlan-ID*} [, | -] **both** | **rx** | **tx**
6. **filter** {**ip access-group** {*standard-access-list* | *expanded-access-list* | *acl-name* } | **ipv6 access-group** *acl-name* | **mac access-group** *acl-name* | **vlan** *vlan-ID* [, -]}
7. **no shutdown**
8. **destination**
9. **ip address** *ip-address*

10. **erspan-id** *erspan-ID*
11. **origin** *ip-address*
12. **ip ttl** *ttl-value*
13. **end**

## DETAILED STEPS

	Command or Action	Purpose
<b>Step 1</b>	<b>enable</b> <b>Example:</b> Switch> enable	Enables privileged EXEC mode. <ul style="list-style-type: none"><li>• Enter your password if prompted.</li></ul>
<b>Step 2</b>	<b>configure terminal</b> <b>Example:</b> Switch# configure terminal	Enters global configuration mode.
<b>Step 3</b>	<b>monitor session</b> <i>span-session-number</i> <b>type erspan-source</b> <b>Example:</b> Switch(config)# monitor session span-session-number type erspan-source	Defines an ERSPAN source session using the session ID and the session type, and enters ERSPAN monitor source session configuration mode. <ul style="list-style-type: none"><li>• Session IDs for source sessions or destination sessions are in the same global ID space, so each session ID is globally unique for both session types.</li><li>• The <i>span-session-number</i> and the session type (configured by the <b>erspan-source</b> keyword) cannot be changed once configured. Use the no form of this command to remove the session and then re-create the session with a new session ID or a new session type.</li></ul>
<b>Step 4</b>	<b>description</b> <i>description</i> <b>Example:</b> Switch(config-mon-erspan-src)# description source1	Describes the ERSPAN source session.
<b>Step 5</b>	<b>source</b> { <b>interface</b> <i>type number</i>   <b>vlan</b> <i>vlan-ID</i> } [,   -] <b>both</b>   <b>rx</b>   <b>tx</b> <b>Example:</b> Switch(config-mon-erspan-src)# source interface fastethernet 0/1 rx	Configures the source interface or the VLAN, and the traffic direction to be monitored.
<b>Step 6</b>	<b>filter</b> { <b>ip access-group</b> { <i>standard-access-list</i>   <i>expanded-access-list</i>   <i>acl-name</i> }   <b>ipv6 access-group</b> <i>acl-name</i>   <b>mac access-group</b> <i>acl-name</i>   <b>vlan</b> <i>vlan-ID</i> [, -]} <b>Example:</b> Switch(config-mon-erspan-src)# filter vlan 3	(Optional) Configures source VLAN filtering when the ERSPAN source is a trunk port. <ul style="list-style-type: none"><li>• <b>Note</b> You cannot include source VLANs and filter VLANs in the same session.</li></ul>

	Command or Action	Purpose
Step 7	<b>no shutdown</b> <b>Example:</b> Switch(config-mon-erspan-src)# no shutdown	Disables the shutting down of the configured session.
Step 8	<b>destination</b> <b>Example:</b> Switch(config-mon-erspan-src)# destination	Defines an ERSPAN destination session and enters ERSPAN monitor destination session configuration mode.
Step 9	<b>ip address ip-address</b> <b>Example:</b> Switch(config-mon-erspan-src-dst)# ip address 192.0.2.9	Configures an IP address for the ERSPAN destination session.
Step 10	<b>erspan-id erspan-ID</b> <b>Example:</b> Switch(config-mon-erspan-src-dst)# erspan-id 2	Configures the ID used by the destination session to identify the ERSPAN traffic.
Step 11	<b>origin ip-address</b> <b>Example:</b> Switch(config-mon-erspan-src-dst)# origin ip-address 203.0.113.2	Configures the IP address used as the destination for the ERSPAN traffic.
Step 12	<b>ip ttl ttl-value</b> <b>Example:</b> Switch(config-mon-erspan-src-dst)# erspan ttl 32	Configures Time to Live (TTL) values for packets in the ERSPAN traffic.
Step 13	<b>end</b> <b>Example:</b> Switch(config-mon-erspan-src-dst)# end	Exits ERSPAN monitor destination session configuration mode and returns to privileged EXEC mode.

## Configuration Examples for ERSPAN

### Example: Configuring an ERSPAN Source Session

```
Switch> enable
Switch# configure terminal
Switch(config)# monitor session 1 type erspan-source
Switch(config-mon-erspan-src)# description source1
Switch(config-mon-erspan-src)# source interface fastethernet 0/1 rx
Switch(config-mon-erspan-src)# filter vlan 3
Switch(config-mon-erspan-src)# no shutdown
Switch(config-mon-erspan-src)# destination
Switch(config-mon-erspan-src-dst)# ip address 192.0.2.9
Switch(config-mon-erspan-src-dst)# erspan-id 2
Switch(config-mon-erspan-src-dst)# origin ip-address 203.0.113.2
Switch(config-mon-erspan-src-dst)# ip ttl 32
```

```
Switch(config-mon-erspan-src-dst)# end
```

## Verifying ERSPAN

To verify the ERSPAN configuration, use the following commands:

The following is sample output from the **show monitor session erspan-source** command:

```
Switch# show monitor session erspan-source session
```

```
Type : ERSPAN Source Session
Status : Admin Enabled
Source Ports :
RX Only : Gi1/4/33
Destination IP Address : 192.0.2.1
Destination ERSPAN ID : 110
Origin IP Address : 10.10.10.216
IPv6 Flow Label : None
```

The following is sample output from the **show monitor session erspan-source detail** command:

```
Switch# show monitor session erspan-source detail
```

```
Type : ERSPAN Source Session
Status : Admin Enabled
Description : -
Source Ports :
RX Only : Gi1/4/33
TX Only : None
Both : None
Source VLANs :
RX Only : None
TX Only : None
Both : None
Source RSPAN VLAN : None
Destination Ports : None
Filter VLANs : None
Filter Addr Type :
RX Only : None
TX Only : None
Both : None
Filter Pkt Type :
RX Only : None
Dest RSPAN VLAN : None
IP Access-group : None
IPv6 Access-group : None
Destination IP Address : 192.0.2.1
Destination IPv6 Address : None
Destination IP VRF : None
Destination ERSPAN ID : 110
Origin IP Address : 10.10.10.216
IP QOS PREC : 0
IP TTL : 255
```

The following output from the **show capability feature monitor erspan-source** command displays information about the configured ERSPAN source sessions:

```
Switch# show capability feature monitor erspan-source
```

```

ERSPAN Source Session Supported: true
No of Rx ERSPAN source session: 8
No of Tx ERSPAN source session: 8
ERSPAN Header Type supported: II
ACL filter Supported: true
Fragmentation Supported: true
Truncation Supported: false
Sequence number Supported: false
QOS Supported: true

```

The following output from the **show capability feature monitor erspan-destination** command displays all the configured global built-in templates:

```

Switch# show capability feature monitor erspan-destination

ERSPAN Destination Session Supported: false

```

## Additional References

### RFCs

Standard/RFC	Title
RFC 2784	Generic Routing Encapsulation (GRE)

### Technical Assistance

Description	Link
<p>The Cisco Support website provides extensive online resources, including documentation and tools for troubleshooting and resolving technical issues with Cisco products and technologies.</p> <p>To receive security and technical information about your products, you can subscribe to various services, such as the Product Alert Tool (accessed from Field Notices), the Cisco Technical Services Newsletter, and Really Simple Syndication (RSS) Feeds.</p> <p>Access to most tools on the Cisco Support website requires a Cisco.com user ID and password.</p>	<a href="http://www.cisco.com/support">http://www.cisco.com/support</a>

## Feature Information for Configuring ERSPAN

The following table provides release information about the feature or features described in this module. This table lists only the software release that introduced support for a given feature in a given software release train. Unless noted otherwise, subsequent releases of that software release train also support that feature.

Use Cisco Feature Navigator to find information about platform support and Cisco software image support. To access Cisco Feature Navigator, go to [www.cisco.com/go/cfn](http://www.cisco.com/go/cfn). An account on Cisco.com is not required.

Table 1: Feature Information for Configuring ERSPAN

Feature Name	Releases	Feature Information
ERSPAN	Cisco IOS XE Denali 16.3.1	<p>This module describes how to configure Encapsulated Remote Switched Port Analyzer (ERSPAN). The Cisco ERSPAN feature allows you to monitor traffic on ports or VLANs and send the monitored traffic to destination ports over a generic routing encapsulation (GRE) tunnel in any VRF.</p> <p>In Cisco IOS XE Denali 16.3.1, this feature was introduced on Cisco Catalyst 3650 Series Switches and Cisco Catalyst 3850 Series Switches.</p> <p>The following commands were introduced or modified: <code>destination (ERSPAN)</code>, <code>erspan</code>, <code>filter (ERSPAN)</code>, and <code>show capability feature monitor</code>.</p> <p>The following commands were introduced or modified: <b><code>destination (ERSPAN)</code></b>, <b><code>filter (ERSPAN)</code></b>, and <b><code>show capability feature monitor</code></b>.</p>