



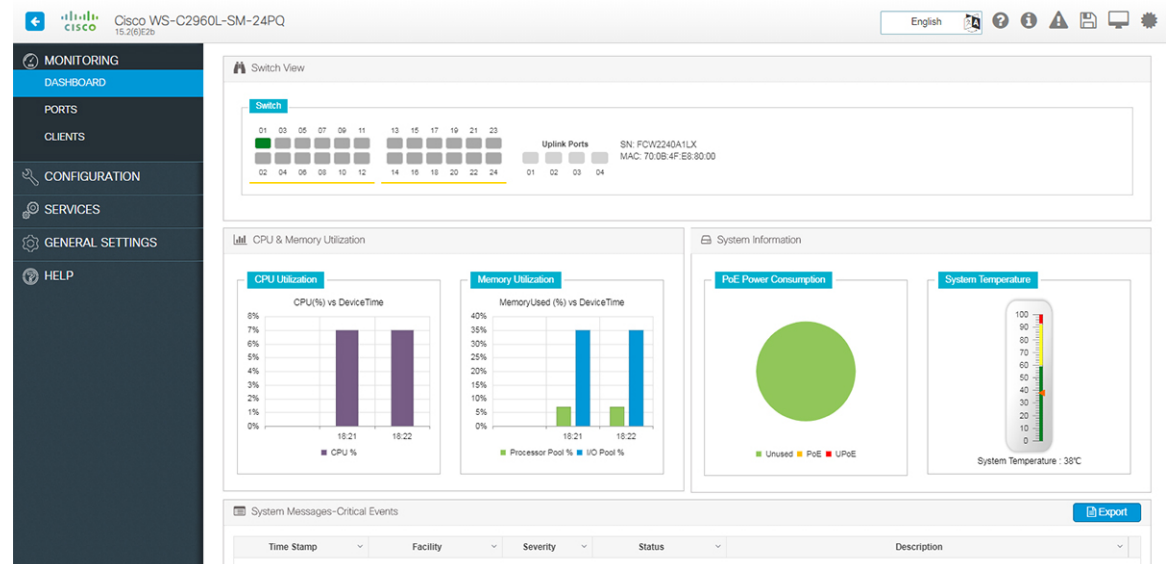
# Monitoring the Device

- [Understanding the Dashboard, on page 1](#)
- [Monitoring Ports, on page 2](#)
- [Monitoring Clients, on page 3](#)

## Understanding the Dashboard

The **Monitoring > Dashboard** page displays a snapshot of the overall status and statistics for your device.

**Figure 1: Dashboard**



- **Switch View** - Displays a snapshot of the ports on the device.
- **CPU and Memory Utilization** - Displays CPU usage on the processors on each core, every 5 minutes, every 1 minute and every 5 seconds. The Memory Utilization section displays a chart of the device memory usage. Hover over the graph to view the processor pool and the I/O pool percentage.
- **System Information** - The **PoE Power Consumption** section displays a pie-chart showing the total Power over Ethernet (PoE), Universal Power over Ethernet (UPoE) on the device, the power used by the

device and the current power available. The **System Temperature** section displays the temperature of the device. If the temperature is yellow or red, your device needs attention.

- **System Messages-Critical Events** - Displays high severity, critical alerts that require your attention. Displays the system messages or any critical events regarding the switch in a tabular format that can also be downloaded using the **Export** button.

## Monitoring Ports

The **Monitoring > Ports > Port Monitoring** page enables you to track and monitor the port parameters (interface details) like type of interface, description, port status, port type of the switch. The logical representation of the ports at the top provides an easy-to-understand snapshot of all ports on the device.

**Figure 2: Port Monitoring**

The screenshot displays the Cisco Port Monitoring interface for a Cisco WS-C2960L-SM-24PQ switch. The interface includes a navigation sidebar on the left with options like MONITORING, PORTS, CLIENTS, CONFIGURATION, SERVICES, GENERAL SETTINGS, and HELP. The main content area is titled 'PORT MONITORING' and features a 'Switch' section with a logical view of ports (01-24) and their status. Below this is a table with columns for SwitchPort, Description, Status, PortType, VLANID, Duplex, Power, Speed, TxBytes, RxBytes, PktsDrop, and SwitchType. The table lists ports 0/0-10, all of which are 'not connected'. Below the table are summary statistics for 'Packets' (Total, Sent, Received) and 'Other Status' (Uni-Directional Links, Buffer Overflow, Queue Drops, Optics Inserted, Loopback Enabled). At the bottom, there is a 'PORT CHANNEL SUMMARY' section with filters for Group, Port-channel, Protocol, Ports, and SwitchType, currently showing 'No items to display'.

You can get additional details associated with the port by clicking on the port in the logical view at the top or in the table.

Parameter	Description
Switch Port	The type of interface. <ul style="list-style-type: none"> <li>• Gigabit Ethernet—Displays the Gigabit Ethernet for 10/100/1000 Mb/s Ethernet ports.</li> <li>• 10 Gigabit Ethernet—Displays the 10-Gigabit Ethernet for 10,000 Mb/s Ethernet ports.</li> <li>• SFP—Displays the small form-factor pluggable (SFP) module Gigabit Ethernet interfaces.</li> <li>• Unknown—Displays unknown when no interface is configured.</li> <li>• SVI port</li> <li>• Port-channel</li> </ul>
Description	The description associated with the port.
Status	The connection status of the port.
Port Type	The type of port—Access, Trunk, Routed.
VLAN/IP	The VLAN connection link associated with the port. Values are as follows: <ul style="list-style-type: none"> <li>• Trunk Mode—Displays the VLAN ID of the VLAN associated with this port.</li> <li>• Access Mode—Displays the VLAN ID of the VLAN associated with this port.</li> </ul>
Duplex	The duplex mode of the interface.
Power	The power (in Watts) of the interface.
Speed	The speed of the interface.
PktDrop	Number of dropped packets.
SwitchType	Displays the type of Switch—Standalone.

## Monitoring Clients

The **Monitor > Clients** page lists the information about the clients connected to the device. Click the client in the table to view properties and statistics for each client.

Parameter	Description
MAC	The MAC address of the client.
Switch Port	The interface used for communication between the client and the switch.
Client Name	Name of the client.
OS	Software version of the client.

<b>Parameter</b>	<b>Description</b>
Manufacturer	Client manufacturer details.
IP	IP address of the client.
VLAN	The VLAN on which the client resides.
POE Drawn	Determines power drawn(wattage) by this client.
Images	An icon to help you identify the device.