



CHAPTER 11

Working with Inventory

This chapter describes how to use the Inventory feature in Cisco Data Center Network Manager (DCNM).

This chapter has the following sections:

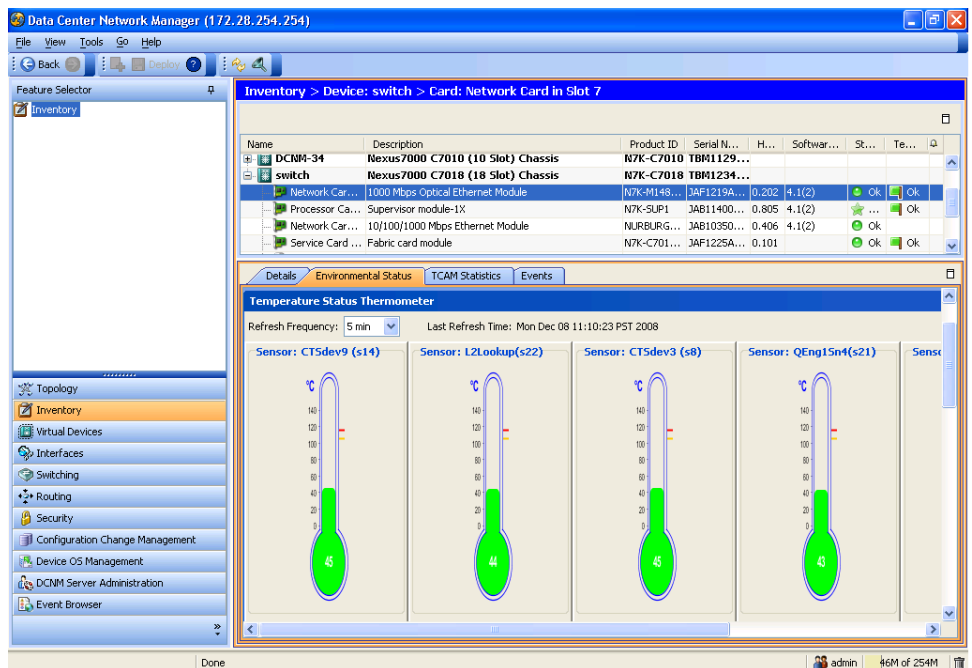
- [Information About Inventory, page 11-1](#)
- [Displaying the Chassis Information, page 11-2](#)
- [Displaying the Module Information, page 11-6](#)
- [Displaying the Power Supply Information, page 11-8](#)
- [Displaying the Fan Tray Information, page 11-10](#)
- [Feature History for Inventory, page 11-11](#)

Information About Inventory

The Inventory feature, shown in [Figure 11-1](#), displays information about the chassis, modules, fan trays, and power supplies for managed devices. The DCNM client can display summary and detailed information for these device components.

Send document comments to nexus7k-docfeedback@cisco.com

Figure 11-1 Inventory Contents Pane



Displaying the Chassis Information

DCNM displays summary, detail, environmental, and event information for the chassis.

This section includes the following topics:

- [Displaying the Chassis Summary Information, page 11-2](#)
- [Displaying the Chassis Detail information, page 11-3](#)
- [Displaying the Chassis Environmental Status, page 11-3](#)
- [Displaying the Chassis CPU Utilization, page 11-3](#)
- [Displaying the Chassis Memory Utilization, page 11-4](#)
- [Displaying the Chassis Events, page 11-5](#)

Displaying the Chassis Summary Information

DCNM displays the chassis summary information for each device it manages when you choose **Inventory** in the Feature Selector pane. The summary information includes the chassis description, product ID, serial number, hardware version, software version, status, temperature, and events.

DETAILED STEPS

To display the summary information for a chassis, from the Feature Selector pane, choose **Inventory**. The summary pane displays summary information for each managed device.

Send document comments to nexus7k-docfeedback@cisco.com

Displaying the Chassis Detail information

DCNM displays the chassis detail information for the device that you choose in the Summary pane. This detail information includes hardware and software information. The hardware information includes the switch name, product ID, IP address, serial number, chassis description.

DETAILED STEPS

-
- Step 1** From the Feature Selector pane, choose **Inventory**.
Summary chassis information for each managed device appears in the Summary pane.
- Step 2** From the Summary pane, click the device.
Tabs appear in the Details pane. The Details tab shows the hardware and software information.
-

Displaying the Chassis Environmental Status

DCNM displays the chassis environmental status information for the device that you choose in the Summary pane. The environmental information includes power usage information and information about supervisor and power supply redundancy.

DETAILED STEPS

To display the environmental status for a chassis, follow these steps:

-
- Step 1** From the Feature Selector pane, choose **Inventory**.
Summary information for each managed device appears in the Summary pane.
- Step 2** From the Summary pane, click the device.
Tabs appear in the Details pane.
- Step 3** From the Details pane, click the **Environmental Status** tab.
Power usage and redundancy information appears in the Details pane.
-

Displaying the Chassis CPU Utilization

DCNM displays the percentage of CPU utilization over time for the device that you choose in the Summary pane. You can customize the reporting of this utilization for types of utilization (user, kernel, or idle), specific thresholds, and time intervals.

Send document comments to nexus7k-docfeedback@cisco.com

DETAILED STEPS

To display the CPU utilization, follow these steps:

-
- Step 1** From the Feature Selector pane, choose **Inventory**.
Summary information for each managed device appears in the Summary pane.
- Step 2** From the summary pane, click the device.
Tabs appear in the Details pane.
- Step 3** From the Details pane, click the **CPU Utilization** tab.
The CPU utilization table appears.
- Step 4** (Optional) To display the percentage of utilization devoted to user or kernel functions, follow these steps:
- Click **Select Parameters**.
A list of utilization types (user, kernel, and idle) appears.
 - Choose the utilization types that you need to see reported.
- Step 5** (Optional) To display utilization within specific thresholds, follow these steps:
- Click the **Turn Thresholds On/Off** tool.
The Adjust Threshold Limits slider tool appears on the toolbar next to the Turn Thresholds On/Off tool.
 - To set a minimum CPU utilization threshold, move the left slider to the desired utilization.
 - To set a maximum CPU utilization threshold, move the right slider to the desired utilization.
- Step 6** (Optional) To change the monitoring frequency, follow these steps:
- Click in the Select Frequency tool drop-down list.
Time intervals appear for you to choose.
 - Choose the appropriate time interval.
- Step 7** Click the **Start Monitoring** tool to begin monitoring CPU utilization.
- Step 8** (Optional) To stop monitoring the CPU utilization, click the **Stop Monitoring** tool.
- Step 9** (Optional) To display how the CPU utilization compares over days or months, follow these steps:
- Click **Show Overview Chart**.
 - (Optional) To see the latest or real-time utilization data, click **RT**.
 - (Optional) To compare utilization data over days or months, click the appropriate button for the amount of time desired (**1d** shows one day, **2d** shows two days, and so on).
-

Displaying the Chassis Memory Utilization

DCNM displays the percentage of memory utilization over time for the device that you choose in the Summary pane. You can customize the reporting of this utilization for specific thresholds and time intervals.

Send document comments to nexus7k-docfeedback@cisco.com

DETAILED STEPS

To display the memory utilization, follow these steps:

-
- Step 1** From the Feature Selector pane, choose **Inventory**.
Summary information for each managed device appears in the Summary pane.
- Step 2** From the Summary pane, click the device.
Tabs appear in the Details pane.
- Step 3** From the Details pane, click the **Memory Utilization** tab.
The Memory Utilization table appears.
- Step 4** (Optional) To display utilization within specific thresholds, follow these steps:
- Click the **Turn Thresholds On/Off** tool.
The Adjust Threshold Limits slider tool appears on the toolbar next to the Turn Thresholds On/Off tool.
 - To set a minimum utilization threshold, move the left slider to the desired utilization.
 - To set a maximum utilization threshold, move the right slider to the desired utilization.
- Step 5** (Optional) To change the monitoring frequency, follow these steps:
- Click in the Select Frequency tool drop-down list.
Time intervals appear for you to choose.
 - Choose the appropriate time interval.
- Step 6** Click the **Start Monitoring** tool to begin monitoring utilization.
- Step 7** (Optional) To stop monitoring the utilization, click the **Stop Monitoring** tool.
- Step 8** (Optional) To display how the utilization compares over days or months, follow these steps:
- Click **Show Overview Chart**.
 - (Optional) To see the latest or real-time utilization data, click **RT**.
 - (Optional) To compare utilization data over days or months, click the appropriate button for the amount of time desired (**1d** shows one day, **2d** shows two days, and so on).
-

Displaying the Chassis Events

DCNM displays the chassis events, which includes the source, time, severity, message, and status of the event. You can display additional details for an event.

DETAILED STEPS

To display the chassis events, follow these steps:

-
- Step 1** From the Feature Selector pane, choose **Inventory**.
Summary information for each managed device appears in the Summary pane.

Send document comments to nexus7k-docfeedback@cisco.com

- Step 2** From the Summary pane, click the device.
Tabs appear in the Details pane.
- Step 3** From the Details pane, click the **Memory Utilization** tab.
The Memory Utilization table appears.
- Step 4** (Optional) To see details for the event, select the event in the Details pane and click the up arrow at the bottom of the details pane.
-

Displaying the Module Information

DCNM displays summary, detail, environmental, and event information for the supervisor modules, I/O modules, and fabric modules.

This section includes the following topics:

- [Displaying the Module Summary Information, page 11-6](#)
- [Displaying the Module Detail Information, page 11-6](#)
- [Displaying the Module Environmental Status, page 11-7](#)
- [Displaying the Module Events, page 11-8](#)

Displaying the Module Summary Information

DCNM displays the module summary information for each device it manages when you expand the device listing in the Summary pane. The summary information includes the module description, product ID, serial number, hardware version, software version, status, temperature, and events.

DETAILED STEPS

To display the summary information for a module, follow these steps:

-
- Step 1** From the Feature Selector pane, choose **Inventory**.
Chassis summary information for the device appears in the Summary pane.
- Step 2** From the Summary pane, expand the device with the modules that you are interested in viewing.
A list of modules, power supplies, and fan trays appears under the device in the Summary pane. Each line includes summary information for the component.
-

Displaying the Module Detail Information

DCNM displays the module detail information for the device that you choose in the Summary pane. This detail information includes general identification information and special information that applies to the the module type.

Send document comments to nexus7k-docfeedback@cisco.com

DETAILED STEPS

To display module detail information, follow these steps:

-
- Step 1** From the Feature Selector pane, choose **Inventory**.
Summary chassis information for each managed device appears in the Summary pane.
 - Step 2** From the Summary pane, click the device.
 - Step 3** Expand the device.
The device listing expands to include a summary of each module, power supply, and fan tray in the chassis.
 - Step 4** Click the module.
Tabs appear in the Details pane. General details appear in the Details tab.
-

Displaying the Module Environmental Status

DCNM displays the module environmental status information for the supervisor module, I/O module, or fabric module that you choose in the Summary pane. The environmental information includes power usage and temperature information.

DETAILED STEPS

To display the environmental status for a module, follow these steps:

-
- Step 1** From the Feature Selector pane, choose **Inventory**.
Summary chassis information for each managed device appears in the Summary pane.
 - Step 2** From the Summary pane, click the device.
 - Step 3** Expand the device.
The device listing expands to include a summary of each module, power supply, and fan tray in the chassis.
 - Step 4** Click the module.
 - Step 5** From the Details pane, click the **Environmental Status** tab.
Power supply and temperature sections appear in the Details pane. The Power Supply section is expanded and the two temperature sections are not expanded
 - Step 6** (Optional) To see textual temperature information, expand the **Temperature Status Table** section.
 - Step 7** (Optional) To see graphical temperature information, expand the **Temperature Status Thermometer** section.
-

Send document comments to nexus7k-docfeedback@cisco.com

Displaying the Module Events

DCNM displays the module event information for the supervisor module, I/O module, or fabric module that you choose in the Summary pane. The events information includes source, time, severity, message, and status information for the event. You can display details for each event.

DETAILED STEPS

To display the events for a module, follow these steps:

-
- Step 1** From the Feature Selector pane, choose **Inventory**.
Summary chassis information for each managed device appears in the Summary pane.
- Step 2** From the Summary pane, click the device.
- Step 3** Expand the device.
The device listing expands to include a summary listing of each module, power supply, and fan tray in the chassis.
- Step 4** Click the module.
- Step 5** From the Details pane, click the **Events** tab.
An events listing appears in the Details pane.
- Step 6** (Optional) To see details for an event, click on the event and click the up arrow button at the bottom of the pane.
-

Displaying the Power Supply Information

DCNM displays summary information, general details, and events for power supplies.

This section includes the following topics:

- [Displaying the Power Supply Summary Information, page 11-8](#)
- [Displaying the Power Supply Detail Information, page 11-9](#)
- [Displaying the Power Supply Events, page 11-9](#)

Displaying the Power Supply Summary Information

DCNM displays the power supply summary information for each device it manages when you expand the device listing in the Summary pane. The summary information includes the module description, product ID, serial number, hardware version, software version, status, temperature, and events.

DETAILED STEPS

To display the summary information for a power supply, follow these steps:

-
- Step 1** From the Feature Selector pane, choose **Inventory**.
Chassis summary information for the device appears in the Summary pane.

Send document comments to nexus7k-docfeedback@cisco.com

- Step 2** From the Summary pane, click the device.
- Step 3** Expand the device with the modules that you are interested in viewing.
- A list of modules, power supplies, and fan trays appears under the device in the Summary pane. Each line includes summary information for the component.
-

Displaying the Power Supply Detail Information

DCNM displays the power supply detail information for the device that you choose in the Summary pane. This detail information includes general identification information, power (watts), and current (Amps).

DETAILED STEPS

-
- Step 1** From the Feature Selector pane, choose **Inventory**.
- Summary chassis information for each managed device appears in the Summary pane.
- Step 2** From the Summary pane, click the device.
- Step 3** Expand the device.
- The device listing expands to include a summary of each module, power supply, and fan tray in the chassis.
- Step 4** Click the power supply.
- Tabs appear in the Details pane. General details appear in the Details tab.
-

Displaying the Power Supply Events

DCNM displays the event information for the power supply that you choose in the Summary pane. The events information includes source, time, severity, message, and status information for the events. You can display details for each event.

DETAILED STEPS

To display the events for a power supply, follow these steps:

-
- Step 1** From the Feature Selector pane, choose **Inventory**.
- Summary chassis information for each managed device appears in the Summary pane.
- Step 2** From the Summary pane, click the device.
- Step 3** Expand the device.
- The device listing expands to include a summary listing of each module, power supply, and fan tray in the chassis.
- Step 4** Click the power supply.
- Step 5** From the Details pane, click the **Events** tab.

Send document comments to nexus7k-docfeedback@cisco.com

An events listing appears in the Details pane.

- Step 6** (Optional) To see details for an event, click on the event and click the up arrow button at the bottom of the pane.

A field opens to display detailed event information.

Displaying the Fan Tray Information

DCNM displays summary information, general details, and events for fan trays.

This section includes the following topics:

- [Displaying the Fan Tray Summary Information, page 11-10](#)
- [Displaying the Fan Tray Detail Information, page 11-10](#)
- [Displaying the Fan Tray Events, page 11-11](#)

Displaying the Fan Tray Summary Information

DCNM displays the fan tray summary information for each device it manages when you expand the device listing in the Summary pane. The summary information includes the fan identification and status information.

DETAILED STEPS

To display the summary information for a fan tray, follow these steps:

- Step 1** From the Feature Selector pane, choose **Inventory**.
- Chassis summary information for the device appears in the Summary pane.
- Step 2** From the Summary pane, click the device.
- Step 3** Expand the device with the fan tray that you are interested in viewing.
- A list of modules, power supplies, and fan trays appears under the device in the Summary pane. Each line includes summary information for the component.
-

Displaying the Fan Tray Detail Information

DCNM displays the fan tray detail information for the device that you choose in the Summary pane. This detail information includes descriptive information and status for the fan tray.

DETAILED STEPS

-
- Step 1** From the Feature Selector pane, choose **Inventory**.
- Summary chassis information for each managed device appears in the Summary pane.

Send document comments to nexus7k-docfeedback@cisco.com

- Step 2** From the Summary pane, click the device.
- Step 3** Expand the device.
The device listing expands to include a summary of each module, power supply, and fan tray in the chassis.
- Step 4** Click the fan tray.
Tabs appear in the Details pane. General details appear in the Details tab.
-

Displaying the Fan Tray Events

DCNM displays the event information for the fan tray that you choose in the Summary pane. The events information includes source, time, severity, message, and status information for the event. You can display details for each event.

DETAILED STEPS

To display the events for a fan tray, follow these steps:

- Step 1** From the Feature Selector pane, choose **Inventory**.
Summary chassis information for each managed device appears in the Summary pane.
- Step 2** From the Summary pane, click the device.
- Step 3** Expand the device.
The device listing expands to include a summary listing of each module, power supply, and fan tray in the chassis.
- Step 4** Click the fan tray.
- Step 5** From the Details pane, click the **Events** tab.
An events listing appears in the Details pane.
- Step 6** (Optional) To see details for an event, click on the event and click the up arrow button at the bottom of the pane.
-

Feature History for Inventory

Table 11-1 lists the release history for this feature.

Table 11-1 Feature History for Inventory

Feature Name	Releases	Feature Information
Inventory	4.1(2)	No change from Release 4.0

Send document comments to nexus7k-docfeedback@cisco.com