



Configuring the Underlay

This chapter contains the following sections:

- [IP Fabric Underlay, on page 1](#)

IP Fabric Underlay

Underlay Considerations

Unicast Underlay:

The primary purpose of the underlay in the VXLAN EVPN fabric is to advertise the reachability of Virtual Tunnel End Points (VTEPs) and BGP peering addresses. The primary criterion for choosing an underlay protocol is fast convergence in the event of node failures. Other criteria are:

- Simplicity of configuration.
- Ability to delay the introduction of a node into the network on boot up.

This document details the two primary protocols supported and tested by Cisco, IS-IS and OSPF. It will also illustrate the use of the eBGP protocol as an underlay for the VXLAN EVPN fabric.

From an underlay/overlay perspective, the packet flow from a server to another over the Virtual Extensible LAN (VXLAN) fabric as mentioned below:

1. The server sends traffic to the source VXLAN tunnel endpoint (VTEP). The VTEP performs Layer-2 or Layer-3 communication based on the destination MAC and derives the nexthop (destination VTEP).



Note When a packet is bridged, the target end host's MAC address is stamped in the DMAC field of the inner frame. When a packet is routed, the default gateway's MAC address is stamped in the DMAC field of the inner frame.

2. The VTEP encapsulates the traffic (frames) into VXLAN packets (overlay function – see Figure 1) and signals the underlay IP network.
3. Based on the underlay routing protocol, the packet is sent from the source VTEP to destination VTEP through the IP network (underlay function – see *Underlay Overview* figure).

- The destination VTEP removes the VXLAN encapsulation (overlay function) and sends traffic to the intended server.

The VTEPs are a part of the underlay network as well since VTEPs need to be reachable to each other to send VXLAN encapsulated traffic across the IP underlay network.

The *Overlay Overview* and *Underlay Overview* images (below) depict the broad difference between an overlay and underlay. Since the focus is on the VTEPs, the spine switches are only depicted in the background.

Figure 1: Overlay Overview

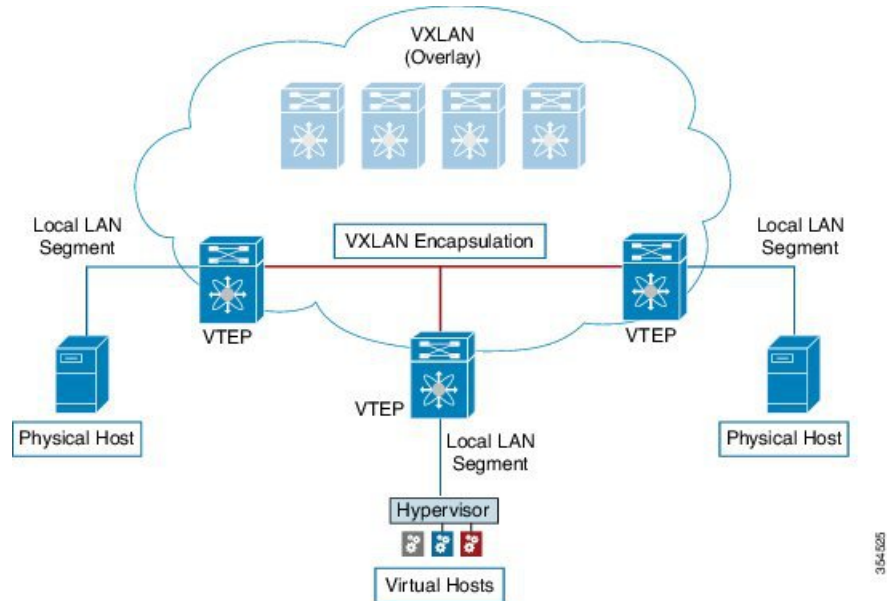
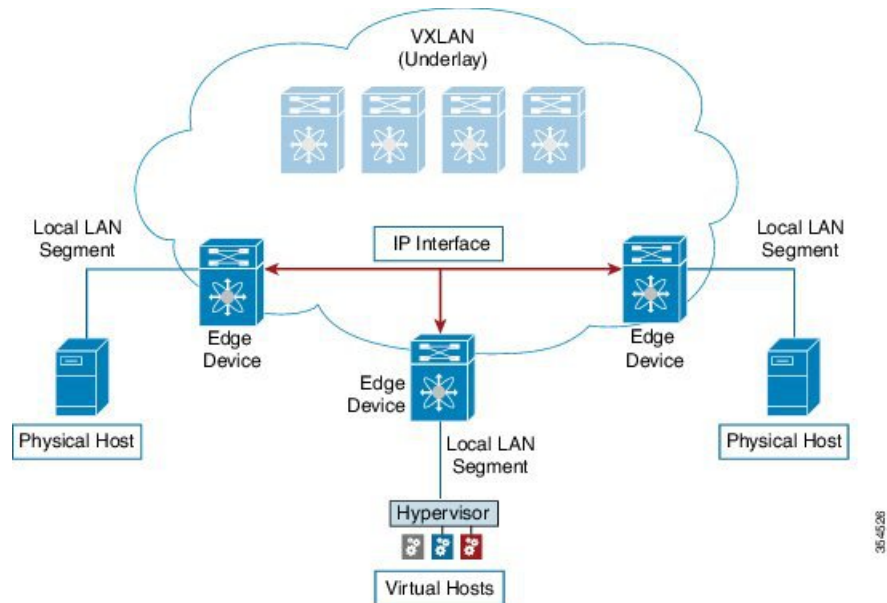


Figure 2: Underlay Overview



Deployment considerations for an underlay IP network in a VXLAN EVPN Programmable Fabric

The deployment considerations for an underlay IP network in a VXLAN EVPN Programmable Fabric are given below:

- Maximum transmission unit (MTU) – Due to VXLAN encapsulation, the MTU requirement is larger and we must avoid potential fragmentation.
 - An MTU of 9216 bytes on each interface on the path between the VTEPs accommodates maximum server MTU + VXLAN overhead. Most data center server NICs support up to 9000 bytes. So, no fragmentation is needed for VXLAN traffic.
 - The VXLAN IP fabric underlay supports the IPv4 address family.
- Unicast routing - Any unicast routing protocol can be used for the VXLAN IP underlay. You can implement OSPF, IS-IS, or eBGP to route between the VTEPs.



Note As a best practice, use a simple IGP (OSPF or IS-IS) for underlay reachability between VTEPs with iBGP for overlay information exchange.

- IP addressing – Point-to-point (P2P) or IP unnumbered links. For each point-to-point link, as example between the leaf switch nodes and spine switch nodes, typically a /30 IP mask should be assigned. Optionally a /31 mask or IP unnumbered links can be assigned. The IP unnumbered approach is leaner from an addressing perspective and consumes fewer IP addresses. The IP unnumbered option for the OSPF or IS-IS protocol underlay will minimize the use of IP addresses.

/31 network - An OSPF or IS-IS point-to-point numbered network is only between two switch (interfaces), and there is no need for a broadcast or network address. So, a /31 network suffices for this network. Neighbors on this network establish adjacency and there is no designated router (DR) for the network.



Note IP Unnumbered for VXLAN underlay is supported starting with Cisco NX-OS Release 7.0(3)I7(2). Only a single unnumbered link between the same devices (for example, spine - leaf) is supported. If multiple physical links are connecting the same leaf and spine, you must use the single L3 port-channel with unnumbered link.

- Multicast protocol for multi-destination (BUM) traffic – Though VXLAN has the BGP EVPN control plane, the VXLAN fabric still requires a technology for Broadcast/Unknown unicast/Multicast (BUM) traffic to be forwarded.
- PIM Bidir is supported on Cisco Nexus 9300-EX/FX/FX2 platform switches.
- vPC configuration — This is documented in **Configuring vPCs** of *Cisco Nexus 9000 Series NX-OS Interfaces Configuration Guide*.

Unicast routing and IP addressing options

Each unicast routing protocol option (OSPF, IS-IS, and eBGP) and sample configurations are given below. Use an option to suit your setup's requirements.



Important All routing configuration samples are from an IP underlay perspective and are not comprehensive. For complete configuration information including routing process, authentication, Bidirectional Forwarding Detection (BFD) information, and so on, see *Cisco Nexus 9000 Series NX-OS Unicast Routing Configuration Guide*.

OSPF Underlay IP Network

Some considerations are given below:

- For IP addressing, use P2P links. Since only two switches are directly connected, you can avoid a Designated Router/Backup Designated Router (DR/BDR) election.
- Use the *point-to-point* network type option. It is ideal for routed interfaces or ports, and is optimal from a Link State Advertisements (LSA) perspective.
- Do not use the broadcast type network. It is suboptimal from an LSA database perspective (LSA type 1 – Router LSA and LSA type 2 – Network LSA) and necessitates a DR/BDR election, thereby creating an additional election and database overhead.



Note You can divide OSPF networks into areas when the size of the routing domain contains a high number of routers and/or IP prefixes. The same general well known OSPF best practice rules in regards of scale and configuration are applicable for the VXLAN underlay too. For example, LSA type 1 and type 2 are never flooded outside of an area. With multiple areas, the size of the OSPF LSA databases can be reduced to optimize CPU and memory consumption.

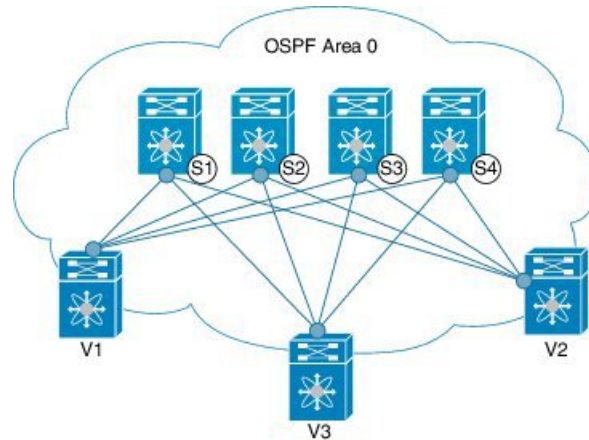


Note

- For ease of use, the configuration mode from which you need to start configuring a task is mentioned at the beginning of each configuration.
- Configuration tasks and corresponding show command output are displayed for a part of the topology in the image. For example, if the sample configuration is shown for a leaf switch and connected spine switch, the show command output for the configuration displays corresponding configuration.

OSPF configuration sample – P2P and IP unnumbered network scenarios

Figure 3: OSPF as the underlay routing protocol



OSPF – P2P link scenario with /31 mask

In the above image, the leaf switches (V1, V2, and V3) are at the bottom of the image. They are connected to the 4 spine switches (S1, S2, S3, and S4) that are depicted at the top of the image. For P2P connections between a leaf switch (also having VTEP function) and each spine, leaf switches V1, V2, and V3 should each be connected to each spine switch.

For V1, we should configure a P2P interface to connect to each spine switch.

A sample P2P configuration between a leaf switch (V1) interface and a spine switch (S1) interface is given below:

OSPF global configuration on leaf switch V1

(config) #

```
feature ospf
router ospf UNDERLAY
router-id 10.1.1.54
```

OSPF leaf switch V1 P2P interface configuration

(config) #

```
interface Ethernet 1/41
description Link to Spine S1
no switchport
ip address 198.51.100.1/31
mtu 9192
ip router ospf UNDERLAY area 0.0.0.0
ip ospf network point-to-point
```

The **ip ospf network point-to-point** command configures the OSPF network as a point-to-point network

The OSPF instance is tagged as UNDERLAY for better recall.

OSPF loopback interface configuration (leaf switch V1)

Configure a loopback interface so that it can be used as the OSPF router ID of leaf switch V1.

(config) #

```
interface loopback 0
 ip address 10.1.1.54/32
 ip router ospf UNDERLAY area 0.0.0.0
```

The interface will be associated with the OSPF instance UNDERLAY and OSPF area 0.0.0.0

OSPF global configuration on spine switch S1

(config) #

```
feature ospf
router ospf UNDERLAY
 router-id 10.1.1.53
```

(Corresponding) OSPF spine switch S1 P2P interface configuration

(config) #

```
interface Ethernet 1/41
 description Link to VTEP V1
 ip address 198.51.100.2/31
 mtu 9192
 ip router ospf UNDERLAY area 0.0.0.0
 ip ospf network point-to-point
 no shutdown
```



Note MTU size of both ends of the link should be configured identically.

OSPF loopback Interface Configuration (spine switch S1)

Configure a loopback interface so that it can be used as the OSPF router ID of spine switch S1.

(config) #

```
interface loopback 0
 ip address 10.1.1.53/32
 ip router ospf UNDERLAY area 0.0.0.0
```

The interface will be associated with the OSPF instance UNDERLAY and OSPF area 0.0.0.0

.
.

To complete OSPF topology configuration for the 'OSPF as the underlay routing protocol' image, configure the following

- 3 more V1 interfaces (or 3 more P2P links) to the remaining 3 spine switches.
- Repeat the procedure to connect P2P links between V2, V3 and V4 and the spine switches.

OSPF - IP unnumbered scenario

A sample OSPF IP unnumbered configuration is given below:

OSPF leaf switch V1 configuration

OSPF global configuration on leaf switch V1

```
(config) #
```

```
feature ospf
router ospf UNDERLAY
  router-id 10.1.1.54
```

The OSPF instance is tagged as UNDERLAY for better recall.

OSPF leaf switch V1 P2P interface configuration

```
(config) #
```

```
interface Ethernet1/41
  description Link to Spine S1
  mtu 9192
  ip ospf network point-to-point
  ip unnumbered loopback0
  ip router ospf UNDERLAY area 0.0.0.0
```

The **ip ospf network point-to-point** command configures the OSPF network as a point-to-point network.

OSPF loopback interface configuration

Configure a loopback interface so that it can be used as the OSPF router ID of leaf switch V1.

```
(config) #
```

```
interface loopback0
  ip address 10.1.1.54/32
  ip router ospf UNDERLAY area 0.0.0.0
```

The interface will be associated with the OSPF instance UNDERLAY and OSPF area 0.0.0.0

OSPF spine switch S1 configuration:

OSPF global configuration on spine switch S1

```
(config) #
```

```
feature ospf
router ospf UNDERLAY
  router-id 10.1.1.53
```

(Corresponding) OSPF spine switch S1 P2P interface configuration

```
(config) #
```

```
interface Ethernet1/41
  description Link to VTEP V1
  mtu 9192
  ip ospf network point-to-point
  ip unnumbered loopback0
  ip router ospf UNDERLAY area 0.0.0.0
```

OSPF loopback interface configuration (spine switch S1)

Configure a loopback interface so that it can be used as the OSPF router ID of spine switch S1.

```
(config) #
```

```
interface loopback0
 ip address 10.1.1.53/32
 ip router ospf UNDERLAY area 0.0.0.0
```

The interface will be associated with the OSPF instance UNDERLAY and OSPF area 0.0.0.0

.

.

To complete OSPF topology configuration for the ‘OSPF as the underlay routing protocol’ image, configure the following:

- *3 more VTEP V1 interfaces (or 3 more IP unnumbered links) to the remaining 3 spine switches.*
- *Repeat the procedure to connect IP unnumbered links between VTEPs V2,V3 and V4 and the spine switches.*

OSPF Verification

Use the following commands for verifying OSPF configuration:

```
Leaf-Switch-V1# show ip ospf

Routing Process UNDERLAY with ID 10.1.1.54 VRF default
Routing Process Instance Number 1
Stateful High Availability enabled
Graceful-restart is configured
  Grace period: 60 state: Inactive
  Last graceful restart exit status: None
Supports only single TOS(TOS0) routes
Supports opaque LSA
Administrative distance 110
Reference Bandwidth is 40000 Mbps
SPF throttling delay time of 200.000 msecs,
  SPF throttling hold time of 1000.000 msecs,
  SPF throttling maximum wait time of 5000.000 msecs
LSA throttling start time of 0.000 msecs,
  LSA throttling hold interval of 5000.000 msecs,
  LSA throttling maximum wait time of 5000.000 msecs
Minimum LSA arrival 1000.000 msec
LSA group pacing timer 10 secs
Maximum paths to destination 8
Number of external LSAs 0, checksum sum 0
Number of opaque AS LSAs 0, checksum sum 0
Number of areas is 1, 1 normal, 0 stub, 0 nssa
Number of active areas is 1, 1 normal, 0 stub, 0 nssa
Install discard route for summarized external routes.
Install discard route for summarized internal routes.
  Area BACKBONE(0.0.0.0)
    Area has existed for 03:12:54
    Interfaces in this area: 2 Active interfaces: 2
    Passive interfaces: 0 Loopback interfaces: 1
    No authentication available
    SPF calculation has run 5 times
    Last SPF ran for 0.000195s
    Area ranges are
    Number of LSAs: 3, checksum sum 0x196c2

Leaf-Switch-V1# show ip ospf interface

loopback0 is up, line protocol is up
  IP address 10.1.1.54/32
  Process ID UNDERLAY VRF default, area 0.0.0.0
```



```

Enabled by interface configuration
State LOOPBACK, Network type LOOPBACK, cost 1
Index 1
Ethernet1/41 is up, line protocol is up
Unnumbered interface using IP address of loopback0 (10.1.1.54)
Process ID UNDERLAY VRF default, area 0.0.0.0
Enabled by interface configuration
State P2P, Network type P2P, cost 4
Index 2, Transmit delay 1 sec
1 Neighbors, flooding to 1, adjacent with 1
Timer intervals: Hello 10, Dead 40, Wait 40, Retransmit 5
Hello timer due in 00:00:07
No authentication
Number of opaque link LSAs: 0, checksum sum 0

```

```
Leaf-Switch-V1# show ip ospf neighbors
```

```

OSPF Process ID UNDERLAY VRF default
Total number of neighbors: 1
Neighbor ID      Pri State           Up Time  Address           Interface
10.1.1.53        1 FULL/ -           06:18:32 10.1.1.53         Eth1/41

```

For a detailed list of commands, refer to the Configuration and Command Reference guides.

IS-IS Underlay IP Network

Some considerations are given below:

- Because IS-IS uses Connectionless Network Service (CLNS) and is independent of the IP, full SPF calculation is avoided when a link changes.
- **Net ID** - Each IS-IS instance has an associated network entity title (NET) ID that uniquely identifies the IS-IS instance in the area. The NET ID is comprised of the IS-IS system ID, which uniquely identifies this IS-IS instance in the area, and the area ID. For example, if the NET ID is 49.0001.0010.0100.1074.00, the system ID is 0010.0100.1074 and the area ID is 49.0001.



Important

Level 1 IS-IS in the Fabric—Cisco has validated the use of IS-IS Level 1 only and IS-IS Level 2 only configuration on all nodes in the programmable fabric. The fabric is considered a stub network where every node needs an optimal path to every other node in the fabric. Cisco NX-OS IS-IS implementation scales well to support a number of nodes in a fabric. Hence, there is no anticipation of having to break up the fabric into multiple IS-IS domains.

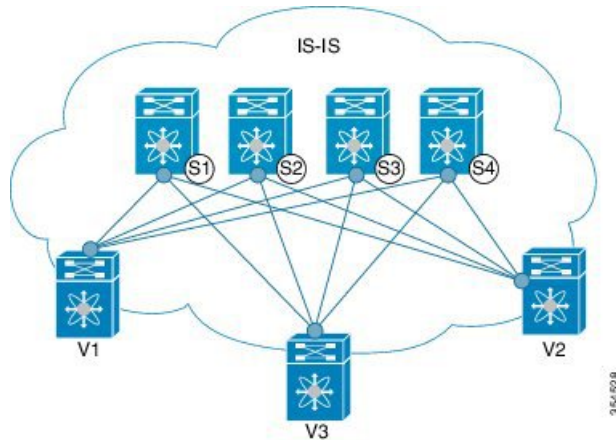


Note

- For ease of use, the configuration mode from which you need to start configuring a task is mentioned at the beginning of each configuration.
- Configuration tasks and corresponding show command output are displayed for a part of the topology in the image. For example, if the sample configuration is shown for a leaf switch and connected spine switch, the show command output for the configuration displays corresponding configuration.

IS-IS configuration sample - P2P and IP unnumbered network scenarios

Figure 4: IS-IS as the underlay routing protocol



In the above image, the leaf switches (V1, V2, and V3, having the VTEP function) are at the bottom of the image. They are connected to the 4 spine switches (S1, S2, S3, and S4) that are depicted at the top of the image.

IS-IS – P2P link scenario with /31 mask

A sample P2P configuration between V1 and spine switch S1 is given below:

For P2P connections between a leaf switch and each spine switch, V1, V2, and V3 should each be connected to each spine switch.

For V1, we must configure a loopback interface and a P2P interface configuration to connect to S1. A sample P2P configuration between a leaf switch (V1) interface and a spine switch (S1) interface is given below:

IS-IS configuration on leaf switch V1

IS-IS global configuration

(config) #

```
feature isis
router isis UNDERLAY
 net 49.0001.0010.0100.1074.00
 is-type level-1
 set-overload-bit on-startup 60
```

Setting the overload bit - You can configure a Cisco Nexus switch to signal other devices not to use the switch as an intermediate hop in their shortest path first (SPF) calculations. You can optionally configure the overload bit temporarily on startup. In the above example, the **set-overload-bit** command is used to set the overload bit on startup to 60 seconds.

IS-IS P2P interface configuration (leaf switch V1)

(config) #

```
interface Ethernet 1/41
 description Link to Spine S1
 mtu 9192
 ip address 209.165.201.1/31
```

```
ip router isis UNDERLAY
```

IS-IS loopback interface configuration (leaf switch V1)

Configure a loopback interface so that it can be used as the IS-IS router ID of leaf switch V1.

(config) #

```
interface loopback 0
  ip address 10.1.1.74/32
  ip router isis UNDERLAY
```

The IS-IS instance is tagged as UNDERLAY for better recall.

(Corresponding) IS-IS spine switch S1 configuration

IS-IS global configuration

(config) #

```
feature isis
router isis UNDERLAY
  net 49.0001.0010.0100.1053.00
  is-type level-1
  set-overload-bit on-startup 60
```

IS-IS P2P interface configuration (spine switch S1)

(config) #

```
interface Ethernet 1/1
  description Link to VTEP V1
  ip address 209.165.201.2/31
  mtu 9192
  ip router isis UNDERLAY
```

IS-IS loopback interface configuration (spine switch S1)

(config) #

```
interface loopback 0
  ip address 10.1.1.53/32
  ip router isis UNDERLAY
```

.

To complete IS-IS topology configuration for the above image, configure the following:

- 3 more leaf switch V1's interfaces (or 3 more P2P links) to the remaining 3 spine switches.
- Repeat the procedure to connect P2P links between leaf switches V2, V3 and V4 and the spine switches.

IS-IS - IP unnumbered scenario

IS-IS configuration on leaf switch V1

IS-IS global configuration

```
(config)#
```

```
feature isis
router isis UNDERLAY
  net 49.0001.0010.0100.1074.00
  is-type level-1
  set-overload-bit on-startup 60
```

IS-IS interface configuration (leaf switch V1)

```
(config) #
```

```
interface Ethernet1/41
  description Link to Spine S1
  mtu 9192
  medium p2p
  ip unnumbered loopback0
  ip router isis UNDERLAY
```

IS-IS loopback interface configuration (leaf switch V1)

```
(config)
```

```
interface loopback0
  ip address 10.1.1.74/32
  ip router isis UNDERLAY
```

IS-IS configuration on the spine switch S1

IS-IS global configuration

```
(config)#
```

```
feature isis
router isis UNDERLAY
  net 49.0001.0010.0100.1053.00
  is-type level-1
  set-overload-bit on-startup 60
```

IS-IS interface configuration (spine switch S1)

```
(config)#
```

```
interface Ethernet1/41
  description Link to V1
  mtu 9192
  medium p2p
  ip unnumbered loopback0
  ip router isis UNDERLAY
```

IS-IS loopback interface configuration (spine switch S1)

```
(config)#
```

```
interface loopback0
  ip address 10.1.1.53/32
  ip router isis UNDERLAY
```

IS-IS Verification

Use the following commands for verifying IS-IS configuration on leaf switch V1:

```
Leaf-Switch-V1# show isis
```

```
ISIS process : UNDERLAY
 Instance number : 1
  UUID: 1090519320
  Process ID 20258
VRF: default
  System ID : 0010.0100.1074 IS-Type : L1
  SAP : 412 Queue Handle : 15
  Maximum LSP MTU: 1492
  Stateful HA enabled
  Graceful Restart enabled. State: Inactive
  Last graceful restart status : none
  Start-Mode Complete
  BFD IPv4 is globally disabled for ISIS process: UNDERLAY
  BFD IPv6 is globally disabled for ISIS process: UNDERLAY
  Topology-mode is base
  Metric-style : advertise(wide), accept(narrow, wide)
  Area address(es) :
    49.0001
Process is up and running
VRF ID: 1
  Stale routes during non-graceful controlled restart
  Interfaces supported by IS-IS :
    loopback0
    loopback1
    Ethernet1/41
Topology : 0
  Address family IPv4 unicast :
    Number of interface : 2
    Distance : 115
  Address family IPv6 unicast :
    Number of interface : 0
    Distance : 115
Topology : 2
  Address family IPv4 unicast :
    Number of interface : 0
    Distance : 115
  Address family IPv6 unicast :
    Number of interface : 0
    Distance : 115
  Level1
  No auth type and keychain
  Auth check set
  Level2
  No auth type and keychain
  Auth check set
  L1 Next SPF: Inactive
  L2 Next SPF: Inactive
```

```
Leaf-Switch-V1# show isis interface
```

```
IS-IS process: UNDERLAY VRF: default
loopback0, Interface status: protocol-up/link-up/admin-up IP address: 10.1.1.74, IP subnet:
 10.1.1.74/32
IPv6 routing is disabled Level1
No auth type and keychain Auth check set
Level2
No auth type and keychain Auth check set
Index: 0x0001, Local Circuit ID: 0x01, Circuit Type: L1 BFD IPv4 is locally disabled for
Interface loopback0 BFD IPv6 is locally disabled for Interface loopback0 MTR is disabled
```

```

Level Metric 1 1
2 1
Topologies enabled:
  L MT Metric MetricCfg Fwdng IPV4-MT IPV4Cfg IPV6-MT IPV6Cfg
  1 0 1 no UP UP yes DN no
  2 0 1 no DN DN no DN no

loopback1, Interface status: protocol-up/link-up/admin-up
IP address: 10.1.2.74, IP subnet: 10.1.2.74/32
IPv6 routing is disabled
Level1
  No auth type and keychain
  Auth check set
Level2
  No auth type and keychain
  Auth check set
Index: 0x0002, Local Circuit ID: 0x01, Circuit Type: L1
BFD IPv4 is locally disabled for Interface loopback1
BFD IPv6 is locally disabled for Interface loopback1
MTR is disabled
Passive level: level-2
Level Metric
1 1
2 1
Topologies enabled:
  L MT Metric MetricCfg Fwdng IPV4-MT IPV4Cfg IPV6-MT IPV6Cfg
  1 0 1 no UP UP yes DN no
  2 0 1 no DN DN no DN no

Ethernet1/41, Interface status: protocol-up/link-up/admin-up
IP unnumbered interface (loopback0)
IPv6 routing is disabled
  No auth type and keychain
  Auth check set
Index: 0x0002, Local Circuit ID: 0x01, Circuit Type: L1
BFD IPv4 is locally disabled for Interface Ethernet1/41
BFD IPv6 is locally disabled for Interface Ethernet1/41
MTR is disabled
Extended Local Circuit ID: 0x1A028000, P2P Circuit ID: 0000.0000.0000.00
Retx interval: 5, Retx throttle interval: 66 ms
LSP interval: 33 ms, MTU: 9192
P2P Adjs: 1, AdjsUp: 1, Priority 64
Hello Interval: 10, Multi: 3, Next IIH: 00:00:01
MT Adjs AdjsUp Metric CSNP Next CSNP Last LSP ID
1 1 1 4 60 00:00:35 ffff.ffff.ffff.ff-ff
2 0 0 4 60 Inactive ffff.ffff.ffff.ff-ff
Topologies enabled:
  L MT Metric MetricCfg Fwdng IPV4-MT IPV4Cfg IPV6-MT IPV6Cfg
  1 0 4 no UP UP yes DN no
  2 0 4 no UP DN no DN no

Leaf-Switch-V1# show isis adjacency

IS-IS process: UNDERLAY VRF: default
IS-IS adjacency database:
Legend: '!': No AF level connectivity in given topology
System ID SNPA Level State Hold Time Interface
Spine-Switch-S1 N/A 1 UP 00:00:23 Ethernet1/41

```

For a detailed list of commands, refer to the Configuration and Command Reference guides.

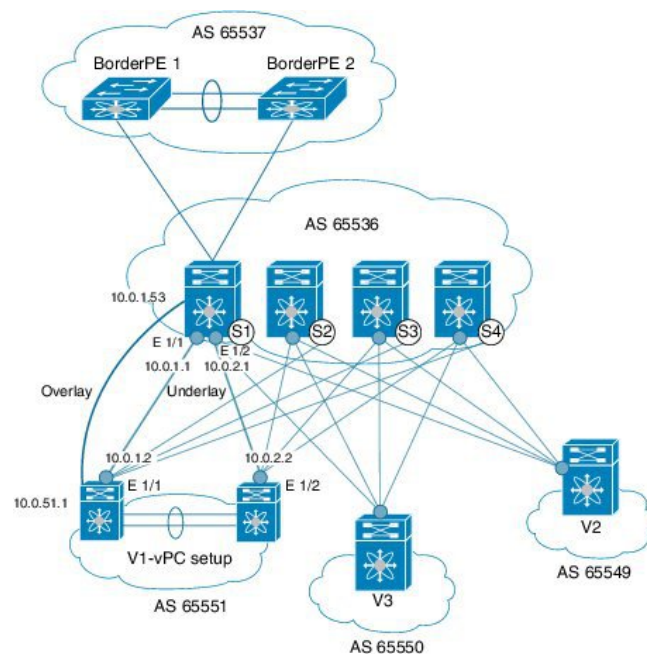
eBGP Underlay IP Network

Some customers would like to have the same protocol in the underlay and overlay in order to contain the number of protocols that need support in their network.

There are various ways to configure the eBGP based underlay. The configurations given in this section have been validated for function and convergence. The IP underlay based on eBGP can be built with these configurations detailed below. (For reference, see image below)

- The design below is following the multi AS model.
- eBGP underlay requires numbered interfaces between leaf and spine nodes. Numbered interfaces are used for the underlay BGP sessions as there is no other protocol to distribute peer reachability.
- The overlay sessions are configured on loopback addresses. This is to increase the resiliency in presence of link or node failures.
- BGP speakers on spine layer configure all leaf node eBGP neighbors individually. This is different from IBGP based peering which can be covered by dynamic BGP.
- Pointers for Multiple AS numbers in a fabric are given below:
 - All spine nodes configured as BGP speakers are in one AS.
 - All leaf nodes will have a unique AS number that is different than the BGP speakers in spine layer.
 - A pair of vPC leaf switch nodes, have the same AS number.
 - If a globally unique AS number is required to represent the fabric, then that can be configured on the border leaf or borderPE switches. All other nodes can use the private AS number range.
 - BGP Confederation has not been leveraged.

Figure 5: eBGP as underlay



354-637

eBGP configuration sample

Sample configurations for a spine switch and leaf switch are given below. The complete configuration is given for providing context, and the configurations added specifically for eBGP underlay are highlighted and further explained.

There is one BGP session per neighbor to set up the underlay. This is done within the global IPv4 address family. The session is used to distribute the loopback addresses for VTEP, Rendezvous Point (RP) and the eBGP peer address for the overlay eBGP session.

Spine switch S1 configuration—On the spine switch (S1 in this example), all leaf nodes are configured as eBGP neighbors.

(config) #

```
router bgp 65536
  router-id 10.1.1.53
  address-family ipv4 unicast
  redistribute direct route-map DIRECT-ROUTES-MAP
```

The **redistribute direct** command is used to advertise the loopback addresses for BGP and VTEP peering. It can be used to advertise any other direct routes in the global address space. The route map can filter the advertisement to include only eBGP peering and VTEP loopback addresses.

```
maximum-paths 2
address-family l2vpn evpn
  retain route-target all
```

Spine switch BGP speakers don't have any VRF configuration. Hence, the **retain route-target all** command is needed to retain the routes and send them to leaf switch VTEPs. The **maximum-paths** command is used for ECMP path in the underlay.

Underlay session towards leaf switch V1 (vPC set up)—As mentioned above, the underlay sessions are configured on the numbered interfaces between spine and leaf switch nodes.

(config) #

```
neighbor 10.0.1.2 remote-as 65551
  address-family ipv4 unicast
  disable-peer-as-check
  send-community both
```

The vPC pair of switches has the same AS number. The **disable-peer-as-check** command is added to allow route propagation between the vPC switches as they are configured with the same AS, for example, for route type 5 routes. If the vPC switches have different AS numbers, this command is not required.

Underlay session towards the border leaf switch—The underlay configurations towards leaf and border leaf switches are the same, barring the changes in IP address and AS values.

Overlay session on the spine switch S1 towards the leaf switch V1

(config) #

```
route-map UNCHANGED permit 10
```



```
set ip next-hop unchanged
```



Note The route-map UNCHANGED is user defined whereas the keyword **unchanged** is an option within the **set ip next-hop** command. In eBGP, the next hop is changed to self when sending a route from one eBGP neighbor to another. The route map UNCHANGED is added to make sure that, for overlay routes, the originating leaf switch is set as next hop and not the spine switch. This ensures that VTEPs are next hops, and not spine switch nodes. The **unchanged** keyword ensures that the next-hop attribute in the BGP update to the eBGP peer is unmodified.

The overlay sessions are configured on loopback addresses.

(config) #

```
neighbor 10.0.51.1 remote-as 65551
update-source loopback0
ebgp-multihop 2
address-family l2vpn evpn
  rewrite-evpn-rt-asn
  disable-peer-as-check
send-community both
route-map UNCHANGED out
```

The spine switch configuration concludes here. The *Route Target auto* feature configuration is given below for reference purposes:

(config) #

```
vrf context coke
vni 50000
rd auto
address-family ipv4 unicast
  route-target both auto
  route-target both auto evpn
address-family ipv6 unicast
  route-target both auto
  route-target both auto evpn
```

The **rewrite-evpn-rt-asn** command is required if the *Route Target auto* feature is being used to configure EVPN RTs.

Route target auto is derived from the Local AS number configured on the switch and the Layer-3 VNID of the VRF i.e. Local AS:VNID. In Multi-AS topology, as illustrated in this guide, each leaf node is represented as a different local AS, and the route target generated for the same VRF will be different on every switch. The command **rewrite-evpn-rt-asn** replaces the ASN portion of the route target in the BGP update message with the local AS number. For example, if VTEP V1 has a Local AS 65551, VTEP V2 has a Local AS 65549, and spine switch S1 has a Local AS 65536, then the route targets for V1, V2 and S1 are as follows:

- V1—65551:50000
- V2—65549:50000
- S1—65536:50000

In this scenario, V2 advertises the route with RT 65549:50000, the spine switch S1 replaces it with RT 65536:50000, and finally when V1 gets the update, it replaces the route target in the update with 65551:50000. This matches the locally configured RT on V1. This command requires that it be configured on all BGP speakers in the fabric.

If the *Route Target auto* feature is not being used, i.e., matching RTs are required to be manually configured on all switches, then this command is not necessary.

Leaf switch VTEP V1 configuration—In the sample configuration below, VTEP V1's interfaces are designated as BGP neighbors. All leaf switch VTEPs including border leaf switch nodes have the following configurations towards spine switch neighbor nodes:

```
(config) #

router bgp 65551
  router-id 10.1.1.54
  address-family ipv4 unicast
    maximum-paths 2
  address-family l2vpn evpn
```

The **maximum-paths** command is used for ECMP path in the underlay.

Underlay session on leaf switch VTEP V1 towards spine switch S1

```
(config) #

neighbor 10.0.1.1 remote-as 65536
  address-family ipv4 unicast
    allows-in
  send-community both
```

The **allows-in** command is needed if leaf switch nodes have the same AS. In particular, the Cisco validated topology had a vPC pair of switches share an AS number.

Overlay session towards spine switch S1

```
(config) #

neighbor 10.1.1.53 remote-as 65536
  update-source loopback0
  ebgp-multihop 2
  address-family l2vpn evpn
  rewrite-evpn-rt-asn
  allows-in
  send-community both
```

The **ebgp-multihop 2** command is needed as the peering for the overlay is on the loopback address. NX-OS considers that as multi hop even if the neighbor is one hop away.

vPC backup session

```
(config) #

route-map SET-PEER-AS-NEXTHOP permit 10
  set ip next-hop peer-address
```

```
neighbor 192.168.0.1 remote-as 65551
update-source Vlan3801
address-family ipv4 unicast
send-community both
route-map SET-PEER-AS-NEXTHOP out
```



Note This session is configured on the backup SVI between the vPC leaf switch nodes.

To complete configurations for the above image, configure the following:

- VI as a BGP neighbor to other spine switches.
- Repeat the procedure for other leaf switches.

BGP Verification

Use the following commands for verifying BGP configuration:

```
show bgp all
show bgp ipv4 unicast neighbors
show ip route bgp
```

For a detailed list of commands, refer to the Configuration and Command Reference guides.

Multicast Routing in the VXLAN Underlay

The VXLAN EVPN Programmable Fabric supports multicast routing for transporting BUM (broadcast, unknown unicast and multicast) traffic.

Refer the table below to know the multicast protocol(s) your Cisco Nexus switches support:

Cisco Nexus Series Switch(es) Combination	Multicast Routing Option
Cisco Nexus 7000/7700 Series switches with Cisco Nexus 9000 Series switches	PIM ASM (Sparse Mode)
Cisco Nexus 9000 Series	PIM ASM (Sparse Mode) <i>or</i> PIM BiDir Note PIM BiDir is supported on Cisco Nexus 9300-EX and 9300-FX/FX2 platform switches.

You can transport BUM traffic without multicast, through *ingress replication*. Ingress replication is currently available on Cisco Nexus 9000 Series switches.

PIM ASM and PIM Bidir Underlay IP Network

Some multicast topology design pointers are given below:

- Use spine/aggregation switches as Rendezvous-Point locations.

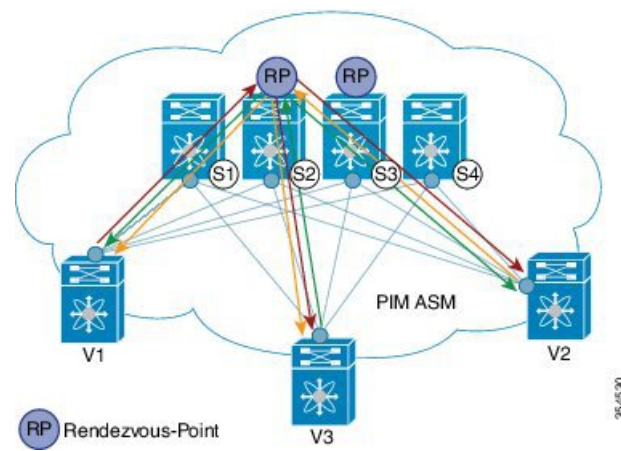
- Reserve a range of multicast groups (destination groups/DGroups) to service the overlay and optimize for diverse VNIs.
- In a spine-leaf topology with a lean spine,
 - Use multiple Rendezvous-Points across multiple spine switches.
 - Use redundant Rendezvous-Points.
 - Map different VNIs to different multicast groups, which are mapped to different Rendezvous-Points for load balancing.



Important The following configuration samples are from an IP underlay perspective and are not comprehensive. Functions such as PIM authentication, BFD for PIM, etc, are not shown here. Refer to the respective Cisco Nexus Series switch multicast configuration guide for complete information.

PIM Sparse-Mode (Any-Source Multicast [ASM])

Figure 6: PIM ASM as the IP multicast routing protocol



PIM ASM is supported on the Cisco Nexus 9000 series as the underlay multicast protocol.

In the above image, the leaf switches (V1, V2, and V3 having VTEP configuration) are at the bottom of the image. They are connected to the 4 spine switches (S1, S2, S3, and S4) that are depicted at the top of the image.

Two multicast Rendezvous-Points (S2 and S3) are configured. The second Rendezvous-Point is added for load sharing and redundancy purposes. *Anycast RP is represented in the PIM ASM topology image.* Anycast RP ensures redundancy and load sharing between the two Rendezvous-Points. To use Anycast RP, multiple spines serving as RPs will share the same IP address (the Anycast RP address). Meanwhile, each RP has its unique IP address added in the RP set for RPs to sync information with respect to sources between all spines which act as RPs.

The shared multicast tree is unidirectional, and uses the Rendezvous-Point for forwarding packets.

PIM ASM at a glance - 1 source tree per multicast group per leaf switch.

Programmable Fabric specific pointers are:

- All VTEPs that serve a VNI join a shared multicast tree. VTEPs V1, V2, and V3 have hosts attached from a single tenant (say x) and these VTEPs form a separate multicast (source, group) tree.
- A VTEP (say V1) might have hosts belonging to other tenants too. Each tenant may have different multicast groups associated with. A source tree is created for each tenant residing on the VTEP, if the tenants do not share a multicast group.

PIM ASM Configuration



Note For ease of use, the configuration mode from which you need to start configuring a task is mentioned at the beginning of each configuration.

Configuration tasks and corresponding show command output are displayed for a part of the topology in the image. For example, if the sample configuration is shown for a leaf switch and connected spine switch, the show command output for the configuration only displays corresponding configuration.

Leaf switch V1 Configuration — Configure RP reachability on the leaf switch.

PIM Anycast Rendezvous-Point association on leaf switch V1

(config) #

```
feature pim
ip pim rp-address 198.51.100.220 group-list 224.1.1.1
```

198.51.100.220 is the Anycast Rendezvous-Point IP address.

Loopback interface PIM configuration on leaf switch V1

(config) #

```
interface loopback 0
 ip address 209.165.201.20/32
 ip pim sparse-mode
```

Point-2-Point (P2P) interface PIM configuration for leaf switch V1 to spine switch S2 connectivity

(config) #

```
interface Ethernet 1/1
 no switchport
 ip address 209.165.201.14/31
 mtu 9216
 ip pim sparse-mode
.
```

Repeat the above configuration for a P2P link between V1 and the spine switch (S3) acting as the redundant Anycast Rendezvous-Point.

The VTEP also needs to be connected with spine switches (S1 and S4) that are not rendezvous points. A sample configuration is given below:

Point-2-Point (P2P) interface configuration for leaf switch V1 to non- rendezvous point spine switch (S1) connectivity

(config) #

```
interface Ethernet 2/2
  no switchport
  ip address 209.165.201.10/31
  mtu 9216
  ip pim sparse-mode
```

Repeat the above configuration for all P2P links between V1 and non- rendezvous point spine switches.

Repeat the complete procedure given above to configure all other leaf switches.

Rendezvous Point Configuration on the spine switches

PIM configuration on spine switch S2

(config) #

```
feature pim
```

Loopback Interface Configuration (RP)

(config) #

```
interface loopback 0
  ip address 10.10.100.100/32
  ip pim sparse-mode
```

Loopback interface configuration (Anycast RP)

(config) #

```
interface loopback 1
  ip address 198.51.100.220/32
  ip pim sparse-mode
```

Anycast-RP configuration on spine switch S2

Configure a spine switch as a Rendezvous Point and associate it with the loopback IP addresses of switches S2 and S3 for redundancy.

(config) #

```
feature pim
ip pim rp-address 198.51.100.220 group-list 224.1.1.1
ip pim anycast-rp 198.51.100.220 10.10.100.100
ip pim anycast-rp 198.51.100.220 10.10.20.100
```



Note The above configurations should also be implemented on the other spine switch (S3) performing the role of RP.

Non-RP Spine Switch Configuration

You also need to configure PIM ASM on spine switches that are not designated as rendezvous points, namely S1 and S4.

Earlier, leaf switch (VTEP) V1 has been configured for a P2P link to a non RP spine switch. A sample configuration on the non RP spine switch is given below.

PIM ASM global configuration on spine switch S1 (non RP)

(config) #

```
feature pim
ip pim rp-address 198.51.100.220 group-list 224.1.1.1
```

Loopback interface configuration (non RP)

(config) #

```
interface loopback 0
 ip address 10.10.100.103/32
 ip pim sparse-mode
```

Point-2-Point (P2P) interface configuration for spine switch S1 to leaf switch V1 connectivity

(config) #

```
interface Ethernet 2/2
 no switchport
 ip address 209.165.201.15/31
 mtu 9216
 ip pim sparse-mode
.
.
```

Repeat the above configuration for all P2P links between the non- rendezvous point spine switches and other leaf switches (VTEPs).

PIM ASM Verification

Use the following commands for verifying PIM ASM configuration:

```
Leaf-Switch-V1# show ip mroute 224.1.1.1

IP Multicast Routing Table for VRF "default"
```

```
(*, 224.1.1.1/32), uptime: 02:21:20, nve ip pim
  Incoming interface: Ethernet1/1, RPF nbr: 10.10.100.100
  Outgoing interface list: (count: 1)
    nve1, uptime: 02:21:20, nve

(10.1.1.54/32, 224.1.1.1/32), uptime: 00:08:33, ip mrib pim
  Incoming interface: Ethernet1/2, RPF nbr: 209.165.201.12
  Outgoing interface list: (count: 1)
    nve1, uptime: 00:08:33, mrib

(10.1.1.74/32, 224.1.1.1/32), uptime: 02:21:20, nve mrib ip pim
  Incoming interface: loopback0, RPF nbr: 10.1.1.74
  Outgoing interface list: (count: 1)
    Ethernet1/6, uptime: 00:29:19, pim
```

```
Leaf-Switch-V1# show ip pim rp
```

```
PIM RP Status Information for VRF "default"
BSR disabled
Auto-RP disabled
BSR RP Candidate policy: None
BSR RP policy: None
Auto-RP Announce policy: None
Auto-RP Discovery policy: None

RP: 198.51.100.220, (0), uptime: 03:17:43, expires: never,
  priority: 0, RP-source: (local), group ranges:
    224.0.0.0/9
```

```
Leaf-Switch-V1# show ip pim interface
```

```
PIM Interface Status for VRF "default"
Ethernet1/1, Interface status: protocol-up/link-up/admin-up
  IP address: 209.165.201.14, IP subnet: 209.165.201.14/31
  PIM DR: 209.165.201.12, DR's priority: 1
  PIM neighbor count: 1
  PIM hello interval: 30 secs, next hello sent in: 00:00:11
  PIM neighbor holdtime: 105 secs
  PIM configured DR priority: 1
  PIM configured DR delay: 3 secs
  PIM border interface: no
  PIM GenID sent in Hellos: 0x33d53dc1
  PIM Hello MD5-AH Authentication: disabled
  PIM Neighbor policy: none configured
  PIM Join-Prune inbound policy: none configured
  PIM Join-Prune outbound policy: none configured
  PIM Join-Prune interval: 1 minutes
  PIM Join-Prune next sending: 1 minutes
  PIM BFD enabled: no
  PIM passive interface: no
  PIM VPC SVI: no
  PIM Auto Enabled: no
  PIM Interface Statistics, last reset: never
  General (sent/received):
    Hellos: 423/425 (early: 0), JPs: 37/32, Asserts: 0/0
    Grafts: 0/0, Graft-Acks: 0/0
    DF-Offers: 4/6, DF-Winners: 0/197, DF-Backoffs: 0/0, DF-Passes: 0/0
  Errors:
    Checksum errors: 0, Invalid packet types/DF subtypes: 0/0
    Authentication failed: 0
    Packet length errors: 0, Bad version packets: 0, Packets from self: 0
    Packets from non-neighbors: 0
      Packets received on passiveinterface: 0
    JPs received on RPF-interface: 0
    (*,G) Joins received with no/wrong RP: 0/0
```



```

      (*,G)/(S,G) JPs received for SSM/Bidir groups: 0/0
      JPs filtered by inbound policy: 0
      JPs filtered by outbound policy: 0
loopback0, Interface status: protocol-up/link-up/admin-up
  IP address: 209.165.201.20, IP subnet: 209.165.201.20/32
  PIM DR: 209.165.201.20, DR's priority: 1
  PIM neighbor count: 0
  PIM hello interval: 30 secs, next hello sent in: 00:00:07
  PIM neighbor holdtime: 105 secs
  PIM configured DR priority: 1
  PIM configured DR delay: 3 secs
  PIM border interface: no
  PIM GenID sent in Hellos: 0x1be2bd41
  PIM Hello MD5-AH Authentication: disabled
  PIM Neighbor policy: none configured
  PIM Join-Prune inbound policy: none configured
  PIM Join-Prune outbound policy: none configured
  PIM Join-Prune interval: 1 minutes
  PIM Join-Prune next sending: 1 minutes
  PIM BFD enabled: no
  PIM passive interface: no
  PIM VPC SVI: no
  PIM Auto Enabled: no
  PIM Interface Statistics, last reset: never
  General (sent/received):
    Hellos: 419/0 (early: 0), JPs: 2/0, Asserts: 0/0
    Grafts: 0/0, Graft-Acks: 0/0
    DF-Offers: 3/0, DF-Winners: 0/0, DF-Backoffs: 0/0, DF-Passes: 0/0
  Errors:
    Checksum errors: 0, Invalid packet types/DF subtypes: 0/0
    Authentication failed: 0
    Packet length errors: 0, Bad version packets: 0, Packets from self: 0
    Packets from non-neighbors: 0
      Packets received on passiveinterface: 0
      JPs received on RPF-interface: 0
      (*,G) Joins received with no/wrong RP: 0/0
      (*,G)/(S,G) JPs received for SSM/Bidir groups: 0/0
      JPs filtered by inbound policy: 0
      JPs filtered by outbound policy: 0

```

```
Leaf-Switch-V1# show ip pim neighbor
```

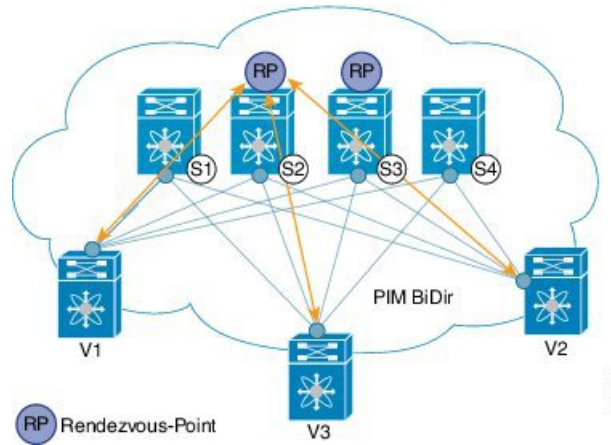
```
PIM Neighbor Status for VRF "default"
```

Neighbor	Interface	Uptime	Expires	DR Priority	Bidir- Capable	BFD State
10.10.100.100	Ethernet1/1	1w1d	00:01:33	1	yes	n/a

For a detailed list of commands, refer to the Configuration and Command Reference guides.

PIM Bidirectional (BiDir)

Figure 7: PIM BiDir as the IP multicast routing protocol



VXLAN BiDir underlay is supported on Cisco Nexus 9300-EX and 9300-FX/FX2 platform switches.

In the above image, the leaf switches (V1, V2, and V3) are at the bottom of the image. They are connected to the 4 spine switches (S1, S2, S3, and S4) that are depicted at the top of the image. The two PIM Rendezvous-Points using phantom RP mechanism are used for load sharing and redundancy purposes.



Note Load sharing happens only via different multicast groups, for the respective, different VNI.

With bidirectional PIM, one bidirectional, shared tree rooted at the RP is built for each multicast group. Source specific state are not maintained within the fabric which provides a more scalable solution.

Programmable Fabric specific pointers are:

- The 3 VTEPs share the same VNI and multicast group mapping to form a single multicast group tree.

PIM BiDir at a glance — *One shared tree per multicast group.*

PIM BiDir Configuration

The following is a configuration example of having two spine switches S2 and S3 serving as RPs using phantom RP for redundancy and loadsharing. Here S2 is the primary RP for group-list 227.2.2.0/26 and secondary for group-list 227.2.2.64/26. S3 is the primary RP for group-list 227.2.2.64/26 and secondary RP for group-list 227.2.2.0/26.



Note Phantom RP is used in a PIM BiDir environment where RP redundancy is designed using loopback networks with different mask lengths in the primary and secondary routers. These loopback interfaces are in the same subnet as the RP address, but with different IP addresses from the RP address. (Since the IP address advertised as RP address is not defined on any routers, the term phantom is used). The subnet of the loopback is advertised in the Interior Gateway Protocol (IGP). To maintain RP reachability, it is only necessary to ensure that a route to the RP exists.

Unicast routing longest match algorithms are used to pick the primary over the secondary router.

The primary router announces a longest match route (say, a /30 route for the RP address) and is preferred over the less specific route announced by the secondary router (a /29 route for the same RP address). The primary router advertises the /30 route of the RP, while the secondary router advertises the /29 route. The latter is only chosen when the primary router goes offline. We will be able to switch from the primary to the secondary RP at the speed of convergence of the routing protocol.

For ease of use, the configuration mode from which you need to start configuring a task is mentioned at the beginning of each configuration.

Configuration tasks and corresponding show command output are displayed for a part of the topology in the image. For example, if the sample configuration is shown for a leaf switch and connected spine switch, the show command output for the configuration only displays corresponding configuration.

Leaf switch V1 configuration

Phantom Rendezvous-Point association on leaf switch V1

(config) #

```
feature pim
ip pim rp-address 10.254.254.1 group-list 227.2.2.0/26 bidir
ip pim rp-address 10.254.254.65 group-list 227.2.2.64/26 bidir
```

Loopback interface PIM configuration on leaf switch V1

(config) #

```
interface loopback 0
 ip address 10.1.1.54/32
 ip pim sparse-mode
```

IP unnumbered P2P interface configuration on leaf switch V1

(config) #

```
interface Ethernet 1/1
 no switchport
 mtu 9192
 medium p2p
 ip unnumbered loopback 0
 ip pim sparse-mode
```

```
interface Ethernet 2/2
  no switchport
  mtu 9192
  medium p2p
  ip unnumbered loopback 0
  ip pim sparse-mode
```

Rendezvous Point configuration (on the two spine switches S2 and S3 acting as RPs)

Using phantom RP on spine switch S2

(config) #

```
feature pim
ip pim rp-address 10.254.254.1 group-list 227.2.2.0/26 bidir
ip pim rp-address 10.254.254.65 group-list 227.2.2.64/26 bidir
```

Loopback interface PIM configuration (RP) on spine switch S2/RP1

(config) #

```
interface loopback 0
  ip address 10.1.1.53/32
  ip pim sparse-mode
```

IP unnumbered P2P interface configuration on spine switch S2/RP1 to leaf switch V1

(config) #

```
interface Ethernet 1/1
  no switchport
  mtu 9192
  medium p2p
  ip unnumbered loopback 0
  ip pim sparse-mode
```

Loopback interface PIM configuration (for phantom RP) on spine switch S2/RP1

(config) #

```
interface loopback 1
  ip address 10.254.254.2/30
  ip pim sparse-mode
```

(config) #

```
interface loopback 2
  ip address 10.254.254.66/29
  ip pim sparse-mode
```

Using phantom RP on spine switch S3

(config) #

```
feature pim
ip pim rp-address 10.254.254.1 group-list 227.2.2.0/26 bidir
ip pim rp-address 10.254.254.65 group-list 227.2.2.64/26 bidir
```

Loopback interface PIM configuration (RP) on spine switch S3/RP2

(config) #

```
interface loopback 0
 ip address 10.10.50.100/32
 ip pim sparse-mode
```

IP unnumbered P2P interface configuration on spine switch S3/RP2 to leaf switch V1

(config) #

```
interface Ethernet 2/2
 no switchport
 mtu 9192
 medium p2p
 ip unnumbered loopback 0
 ip pim sparse-mode
```

Loopback interface PIM configuration (for phantom RP) on spine switch S3/RP2

(config) #

```
interface loopback 1
 ip address 10.254.254.66/30
 ip pim sparse-mode
```

```
interface loopback 2
 ip address 10.254.254.2/29
 ip pim sparse-mode
```

PIM BiDir Verification

Use the following commands for verifying PIM BiDir configuration:

```
Leaf-Switch-V1# show ip mroute
```

```
IP Multicast Routing Table for VRF "default"
```

```
(* , 227.2.2.0/26), bidir, uptime: 4d08h, pim ip
  Incoming interface: Ethernet1/1, RPF nbr: 10.1.1.53
  Outgoing interface list: (count: 1)
    Ethernet1/1, uptime: 4d08h, pim, (RPF)

(* , 227.2.2.0/32), bidir, uptime: 4d08h, nve ip pim
  Incoming interface: Ethernet1/1, RPF nbr: 10.1.1.53
  Outgoing interface list: (count: 2)
    Ethernet1/1, uptime: 4d08h, pim, (RPF)
    nve1, uptime: 4d08h, nve

(* , 227.2.2.64/26), bidir, uptime: 4d08h, pim ip
```

```

Incoming interface: Ethernet1/5, RPF nbr: 10.10.50.100/32
Outgoing interface list: (count: 1)
    Ethernet1/5, uptime: 4d08h, pim, (RPF)

(*, 232.0.0.0/8), uptime: 4d08h, pim ip
Incoming interface: Null, RPF nbr: 0.0.0.0
Outgoing interface list: (count: 0)

```

```
Leaf-Switch-V1# show ip pim rp
```

```

PIM RP Status Information for VRF "default"
BSR disabled
Auto-RP disabled
BSR RP Candidate policy: None
BSR RP policy: None
Auto-RP Announce policy: None
Auto-RP Discovery policy: None

```

```

RP: 10.254.254.1, (1),
    uptime: 4d08h  priority: 0,
    RP-source: (local),
    group ranges:
    227.2.2.0/26 (bidir)
RP: 10.254.254.65, (2),
    uptime: 4d08h  priority: 0,
    RP-source: (local),
    group ranges:
    227.2.2.64/26 (bidir)

```

```
Leaf-Switch-V1# show ip pim interface
```

```

PIM Interface Status for VRF "default"
loopback0, Interface status: protocol-up/link-up/admin-up
IP address: 10.1.1.54, IP subnet: 10.1.1.54/32
PIM DR: 10.1.1.54, DR's priority: 1
PIM neighbor count: 0
PIM hello interval: 30 secs, next hello sent in: 00:00:23
PIM neighbor holdtime: 105 secs
PIM configured DR priority: 1
PIM configured DR delay: 3 secs
PIM border interface: no
PIM GenID sent in Hellos: 0x12650908
PIM Hello MD5-AH Authentication: disabled
PIM Neighbor policy: none configured
PIM Join-Prune inbound policy: none configured
PIM Join-Prune outbound policy: none configured
PIM Join-Prune interval: 1 minutes
PIM Join-Prune next sending: 1 minutes
PIM BFD enabled: no
PIM passive interface: no
PIM VPC SVI: no
PIM Auto Enabled: no
PIM Interface Statistics, last reset: never
  General (sent/received):
    Hellos: 13158/0 (early: 0), JPs: 0/0, Asserts: 0/0
    Grafts: 0/0, Graft-Acks: 0/0
    DF-Offers: 0/0, DF-Winners: 0/0, DF-Backoffs: 0/0, DF-Passes: 0/0
  Errors:
    Checksum errors: 0, Invalid packet types/DF subtypes: 0/0
    Authentication failed: 0
    Packet length errors: 0, Bad version packets: 0, Packets from self: 0
    Packets from non-neighbors: 0
    Packets received on passiveinterface: 0

```

```

JPs received on RPF-interface: 0
(*,G) Joins received with no/wrong RP: 0/0
(*,G)/(S,G) JPs received for SSM/Bidir groups: 0/0
JPs filtered by inbound policy: 0
JPs filtered by outbound policy: 0

```

```

Ethernet1/1, Interface status: protocol-up/link-up/admin-up
  IP unnumbered interface (loopback0)
  PIM DR: 10.1.1.54, DR's priority: 1
  PIM neighbor count: 1
  PIM hello interval: 30 secs, next hello sent in: 00:00:04
  PIM neighbor holdtime: 105 secs
  PIM configured DR priority: 1
  PIM configured DR delay: 3 secs
  PIM border interface: no
  PIM GenID sent in Hellos: 0x2534269b
  PIM Hello MD5-AH Authentication: disabled
  PIM Neighbor policy: none configured
  PIM Join-Prune inbound policy: none configured
  PIM Join-Prune outbound policy: none configured
  PIM Join-Prune interval: 1 minutes
  PIM Join-Prune next sending: 1 minutes
  PIM BFD enabled: no
  PIM passive interface: no
  PIM VPC SVI: no
  PIM Auto Enabled: no
  PIM Interface Statistics, last reset: never
  General (sent/received):
    Hellos: 13152/13162 (early: 0), JPs: 2/0, Asserts: 0/0
    Grafts: 0/0, Graft-Acks: 0/0
    DF-Offers: 9/5, DF-Winners: 6249/6254, DF-Backoffs: 0/1, DF-Passes: 0/1
  Errors:
    Checksum errors: 0, Invalid packet types/DF subtypes: 0/0
    Authentication failed: 0
    Packet length errors: 0, Bad version packets: 0, Packets from self: 0
    Packets from non-neighbors: 0
      Packets received on passiveinterface: 0
    JPs received on RPF-interface: 0
    (*,G) Joins received with no/wrong RP: 0/0
    (*,G)/(S,G) JPs received for SSM/Bidir groups: 0/0
    JPs filtered by inbound policy: 0
    JPs filtered by outbound policy: 0

```

```
Leaf-Switch-V1# show ip pim neighbor
```

```
PIM Neighbor Status for VRF "default"
```

Neighbor	Interface	Uptime	Expires	DR Priority	Bidir- Capable	BFD State
10.1.1.53	Ethernet1/1	1w1d	00:01:33	1	yes	n/a
10.10.50.100	Ethernet2/2	1w1d	00:01:33	1	yes	n/a

For a detailed list of commands, refer to the Configuration and Command Reference guides.

Underlay deployment without multicast (Ingress replication)

Ingress replication is supported on Cisco Nexus 9000 Series switches.

