



# Configuring Authentication, Authorization, and Accounting

---

This chapter describes how to configure authentication, authorization, and accounting (AAA) on Cisco Nexus 5000 Series switches. It contains the following sections:

- [Information About AAA, page 1](#)
- [Prerequisites for Remote AAA, page 5](#)
- [Information about AAA Guidelines and Limitations, page 6](#)
- [Configuring AAA, page 6](#)
- [Displaying and Clearing the Local AAA Accounting Log , page 15](#)
- [Verifying AAA Configuration, page 15](#)
- [Example AAA Configuration, page 16](#)
- [Default AAA Settings, page 16](#)

## Information About AAA

### AAA Security Services

The authentication, authorization, and accounting (AAA) features allows you to verify the identity of, grant access to, and track the actions of users managing Cisco Nexus 5000 Series switches. The Cisco Nexus 5000 Series switches support Remote Access Dial-In User Service (RADIUS) or Terminal Access Controller Access Control device Plus (TACACS+) protocols.

Based on the user ID and password combination that you provide, the Cisco Nexus 5000 Series switches perform local authentication or authorization using the local database or remote authentication or authorization using one or more AAA servers. A preshared secret key provides security for communication between the switch and AAA servers. You can configure a common secret key for all AAA servers or for only a specific AAA server.

AAA security provides the following services:

- **Authentication**—Identifies users, including login and password dialog, challenge and response, messaging support, and, encryption depending on the security protocol that you select.

Authentication is the process of verifying the identity of the person or device accessing the Cisco Nexus 5000 Series switches. This process is based on the user ID and password combination provided by the entity trying to access the switch. The Cisco Nexus 5000 Series switches allow you to perform local authentication (using the local lookup database) or remote authentication (using one or more RADIUS or TACACS+ servers).

- **Authorization**—Provides access control.

AAA authorization is the process of assembling a set of attributes that describe what the user is authorized to perform. Authorization in Cisco Nexus 5000 Series switches is provided by attributes that are downloaded from AAA servers. Remote security servers, such as RADIUS and TACACS+, authorize users for specific rights by associating attribute-value (AV) pairs, which define those rights with the appropriate user.

- **Accounting**—Provides the method for collecting information, logging the information locally, and sending the information to the AAA server for billing, auditing, and reporting.

The accounting feature tracks and maintains a log of every management session used to access the Cisco Nexus 5000 Series switches. You can use this information to generate reports for troubleshooting and auditing purposes. You can store accounting logs locally or send them to remote AAA servers.

**Note**

---

The Cisco NX-OS software supports authentication, authorization, and accounting independently. For example, you can configure authentication and authorization without configuring accounting.

---

## Benefits of Using AAA

AAA provides the following benefits:

- Increased flexibility and control of access configuration
- Scalability
- Standardized authentication methods, such as RADIUS and TACACS+
- Multiple backup devices

## Remote AAA Services

Remote AAA services provided through RADIUS and TACACS+ protocols have the following advantages over local AAA services:

- User password lists for each Cisco Nexus 5000 Series switch in the fabric are easier to manage.
- AAA servers are already deployed widely across enterprises and can be easily used for AAA services.
- The accounting log for all switches in the fabric can be centrally managed.
- User attributes for each switch in the fabric than using the local databases on the switches are easier to manage.

## AAA Server Groups

You can specify remote AAA servers for authentication, authorization, and accounting using server groups. A server group is a set of remote AAA servers that implement the same AAA protocol. The purpose of a server group is to provide for failover servers in case a remote AAA server fails to respond. If the first remote server in the group fails to respond, the next remote server in the group is tried until one of the servers sends a response. If all the AAA servers in the server group fail to respond, then that server group option is considered a failure. If required, you can specify multiple server groups. If a Cisco Nexus 5000 Series switch encounters errors from the servers in the first group, it tries the servers in the next server group.

## AAA Service Configuration Options

On Cisco Nexus 5000 Series switches, you can have separate AAA configurations for the following services:

- User Telnet or Secure Shell (SSH) login authentication
- Console login authentication
- User management session accounting

The following table lists the CLI commands for each AAA service configuration option.

**Table 1: AAA Service Configuration Commands**

AAA Service Configuration Option	Related Command
Telnet or SSH login	<b>aaa authentication login default</b>
Console login	<b>aaa authentication login console</b>
User session accounting	<b>aaa accounting default</b>

You can specify the following authentication methods for the AAA services:

- RADIUS server groups—Uses the global pool of RADIUS servers for authentication.
- Specified server groups—Uses specified RADIUS or TACACS+ server groups for authentication.
- Local—Uses the local username or password database for authentication.
- None—Uses only the user name.



### Note

If the method is for all RADIUS servers, instead of a specific server group, the Nexus 5000 Series switches choose the RADIUS server from the global pool of configured RADIUS servers in the order of configuration. Servers from this global pool are the servers that can be selectively configured in a RADIUS server group on the Nexus 5000 Series switches.

The following table describes the AAA authentication methods that you can configure for the AAA services.

**Table 2: AAA Authentication Methods for AAA Services**

AAA Service	AAA Methods
Console login authentication	Server groups, local, and none
User login authentication	Server groups, local, and none
User management session accounting	Server groups and local

**Note**

For console login authentication, user login authentication, and user management session accounting, the Cisco Nexus 5000 Series switches try each option in the order specified. The local option is the default method when other configured options fail.

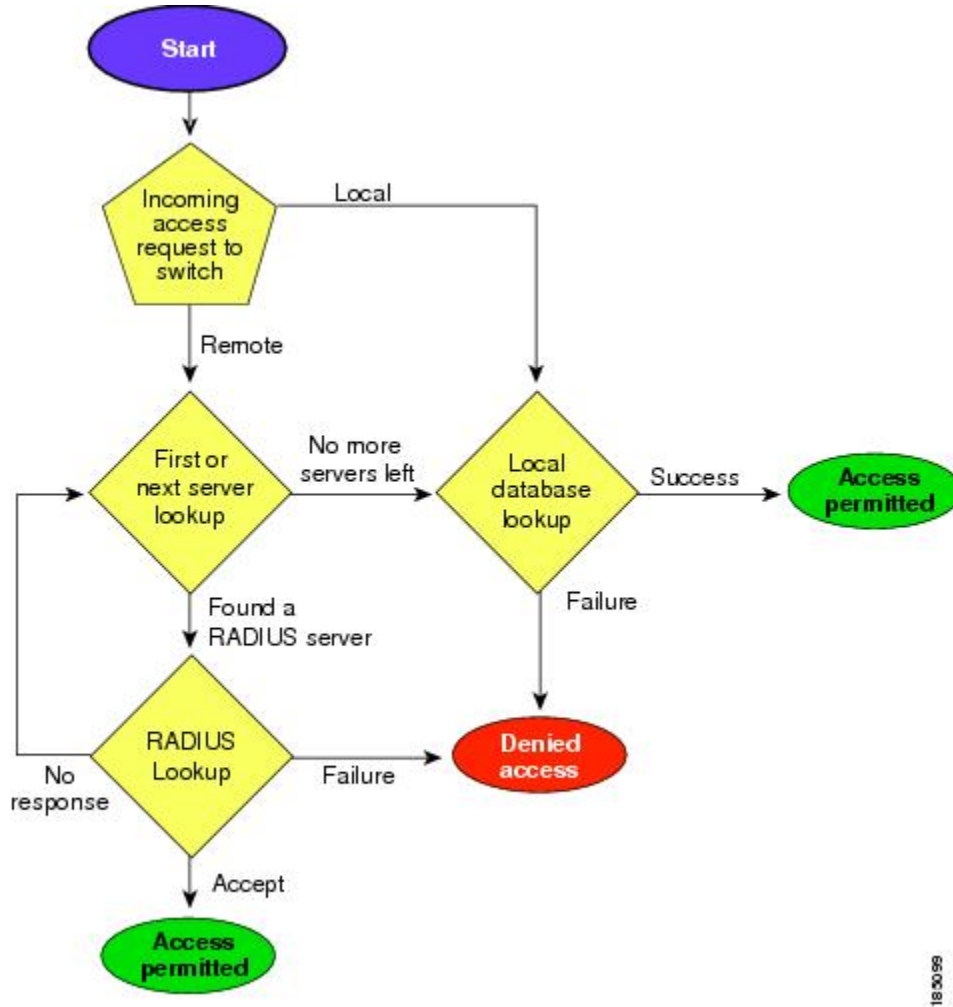
## Authentication and Authorization Process for User Login

The figure below shows a flowchart of the authentication and authorization process for user login. The following process occurs:

- When you log in to the required Cisco Nexus 5000 Series switch, you can use the Telnet, SSH, Fabric Manager or Device Manager, or console login options.
- When you have configured the AAA server groups using the server group authentication method, the Cisco Nexus 5000 Series switch sends an authentication request to the first AAA server in the group as follows:
  - If the AAA server fails to respond, then the next AAA server is tried and so on until the remote server responds to the authentication request.
  - If all AAA servers in the server group fail to respond, then the servers in the next server group are tried.
  - If all configured methods fail, then the local database is used for authentication.
- If the Cisco Nexus 5000 Series switches successfully authenticate you through a remote AAA server, then the following possibilities apply:
  - If the AAA server protocol is RADIUS, then user roles specified in the cisco-av-pair attribute are downloaded with an authentication response.
  - If the AAA server protocol is TACACS+, then another request is sent to the same server to get the user roles specified as custom attributes for the shell.

- If your username and password are successfully authenticated locally, the Cisco Nexus 5000 Series switch logs you in and assigns you the roles configured in the local database.

Figure 1: Authorization and Authentication Flow for User Login



**Note**

"No more server groups left" means that there is no response from any server in all server groups.  
 "No more servers left" means that there is no response from any server within this server group.

## Prerequisites for Remote AAA

Remote AAA servers have the following prerequisites:

- At least one RADIUS or TACACS+ server must be IP reachable.
- The Cisco Nexus 5000 Series switch is configured as a client of the AAA servers.

- The preshared secret key is configured on the Cisco Nexus 5000 Series switch and on the remote AAA servers.
- The remote server responds to AAA requests from the Cisco Nexus 5000 Series switch.

#### Related Topics

- [Configuring RADIUS Server Hosts](#)
- [Configuring TACACS+ Server Hosts](#)
- [Manually Monitoring RADIUS Servers or Groups](#)
- [Manually Monitoring TACACS+ Servers or Groups](#)

## Information about AAA Guidelines and Limitations

The Cisco Nexus 5000 Series switches do not support all numeric usernames, whether created with TACACS+ or RADIUS, or created locally. If an all numeric username exists on an AAA server and is entered during login, the Cisco Nexus 5000 Series switch will still log in the user.



#### Caution

You should not create user accounts with usernames that are all numeric.

## Configuring AAA

### Configuring Console Login Authentication Methods

This section describes how to configure the authentication methods for the console login.

The authentication methods include the following:

- Global pool of RADIUS servers
- Named subset of RADIUS or TACACS+ servers
- Local database on the Nexus 5000 Series switch
- Username only ( **none** )

The default method is local.



#### Note

The **group radius** and **group *server-name*** forms of the **aaa authentication** command are used for a set of previously defined RADIUS servers. Use the **radius server-host** command to configure the host servers. Use the **aaa group server radius** command to create a named group of servers.

Before you configure console login authentication methods, configure RADIUS or TACACS+ server groups as needed. To configure console login authentication methods, perform this task:

## SUMMARY STEPS

1. switch# **configure terminal**
2. switch(config)# **aaa authentication login console {group group-list [none] | local | none}**
3. switch(config)# **exit**
4. (Optional) switch# **show aaa authentication**
5. (Optional) switch# **copy running-config startup-config**

## DETAILED STEPS

	Command or Action	Purpose
<b>Step 1</b>	switch# <b>configure terminal</b>	Enters configuration mode.
<b>Step 2</b>	switch(config)# <b>aaa authentication login console {group group-list [none]   local   none}</b>	<p>Configures login authentication methods for the console.</p> <p>The <i>group-list</i> argument consists of a space-delimited list of group names. The group names are the following:</p> <ul style="list-style-type: none"> <li>• <b>radius</b> —Uses the global pool of RADIUS servers for authentication.</li> <li>• <i>named-group</i> —Uses a named subset of TACACS+ or RADIUS servers for authentication.</li> </ul> <p>The <b>local</b> method uses the local database for authentication. The <b>none</b> method uses the username only.</p> <p>The default console login method is <b>local</b>, which is used when no methods are configured or when all of the configured methods fail to respond.</p>
<b>Step 3</b>	switch(config)# <b>exit</b>	Exits configuration mode.
<b>Step 4</b>	switch# <b>show aaa authentication</b>	(Optional) Displays the configuration of the console login authentication methods.
<b>Step 5</b>	switch# <b>copy running-config startup-config</b>	(Optional) Copies the running configuration to the startup configuration.

The following example shows how to configure authentication methods for the console login:

```
switch# configure terminal
switch(config)# aaa authentication login console group radius
switch(config)# exit
switch# show aaa authentication
switch# copy running-config startup-config
```

## Configuring Default Login Authentication Methods

The authentication methods include the following:

- Global pool of RADIUS servers
- Named subset of RADIUS or TACACS+ servers

- Local database on the Nexus 5000 Series switch
- Username only

The default method is local.

Before you configure default login authentication methods, configure RADIUS or TACACS+ server groups as needed. To configure default login authentication methods, perform this task:

## SUMMARY STEPS

1. switch# **configure terminal**
2. switch(config)# **aaa authentication login default {group *group-list* [none] | local | none}**
3. switch(config)# **exit**
4. (Optional) switch# **show aaa authentication**
5. (Optional) switch# **copy running-config startup-config**

## DETAILED STEPS

	Command or Action	Purpose
<b>Step 1</b>	switch# <b>configure terminal</b>	Enters configuration mode.
<b>Step 2</b>	switch(config)# <b>aaa authentication login default {group <i>group-list</i> [none]   local   none}</b>	<p>Configures the default authentication methods.</p> <p>The <i>group-list</i> argument consists of a space-delimited list of group names. The group names are the following:</p> <ul style="list-style-type: none"> <li>• <b>radius</b> —Uses the global pool of RADIUS servers for authentication.</li> <li>• <b>named-group</b> —Uses a named subset of TACACS+ or RADIUS servers for authentication.</li> </ul> <p>The <b>local</b> method uses the local database for authentication. The <b>none</b> method uses the username only.</p> <p>The default login method is <b>local</b>, which is used when no methods are configured or when all of the configured methods do not respond.</p>
<b>Step 3</b>	switch(config)# <b>exit</b>	Exits configuration mode.
<b>Step 4</b>	switch# <b>show aaa authentication</b>	(Optional) Displays the configuration of the default login authentication methods.
<b>Step 5</b>	switch# <b>copy running-config startup-config</b>	(Optional) Copies the running configuration to the startup configuration.



## Enabling Login Authentication Failure Messages

When you log in, the login is processed by the local user database if the remote AAA servers do not respond. If you have enabled the displaying of login failure messages, the following message is displayed :

```
Remote AAA servers unreachable; local authentication done.
Remote AAA servers unreachable; local authentication failed.
```

To enable login authentication failure messages, perform this task:

### SUMMARY STEPS

1. switch# **configure terminal**
2. switch(config)# **aaa authentication login error-enable**
3. switch(config)# **exit**
4. (Optional) switch# **show aaa authentication**
5. (Optional) switch# **copy running-config startup-config**

### DETAILED STEPS

	Command or Action	Purpose
<b>Step 1</b>	switch# <b>configure terminal</b>	Enters configuration mode.
<b>Step 2</b>	switch(config)# <b>aaa authentication login error-enable</b>	Enables login authentication failure messages. The default is disabled.
<b>Step 3</b>	switch(config)# <b>exit</b>	Exits configuration mode.
<b>Step 4</b>	switch# <b>show aaa authentication</b>	(Optional) Displays the login failure message configuration.
<b>Step 5</b>	switch# <b>copy running-config startup-config</b>	(Optional) Copies the running configuration to the startup configuration.

## Configuring AAA Command Authorization

When a TACACS+ server authorization method is configured, you can authorize every command that a user executes with the TACACS+ server which includes all EXEC mode commands and all configuration mode commands.

The authorization methods include the following:

- Group—TACACS+ server group
- Local—Local role-based authorization
- None—No authorization is performed

The default method is Local.

**Note**

There is no authorization on the console session.

**Before You Begin**

You must enable TACACS+ before configuring AAA command authorization.

**SUMMARY STEPS**

1. **configure terminal**
2. **aaa authorization {commands | config-commands} {default} {[group group-name] | [local]} | {[group group-name] | none}}**

**DETAILED STEPS**

	Command or Action	Purpose
<b>Step 1</b>	<b>configure terminal</b>  <b>Example:</b> <pre>switch# configure terminal switch(config)#</pre>	Enters global configuration mode.
<b>Step 2</b>	<b>aaa authorization {commands   config-commands} {default} {[group group-name]   [local]}   {[group group-name]   none}}</b>  <b>Example:</b> <pre>switch(config)# aaa authorization config-commands default group tac1</pre> <b>Example:</b> <pre>switch# aaa authorization commands default group tac1</pre>	Configures authorization parameters.  Use the <b>commands</b> keyword to authorize EXEC mode commandes.  Use the <b>config-commands</b> keyword to authorize configuration mode commands.  Use the <b>group</b> , <b>local</b> , or <b>none</b> keywords to identify the authorization method.

The following shows EXEC and configuration mode examples.

This example shows how to authorize EXEC mode commands with TACACS+ server group *tac1*

```
switch# aaa authorization commands default group tac1
```

This example shows how to authorize configuration mode commands with TACACS+ server group *tac1*

```
switch(config)# aaa authorization config-commands default group tac1
```

This example shows how to authorize configuration mode commands with TACACS+ server group *tac1*

- If the server is reachable, the command is allowed or not allowed based on the server response.
- If there is an error reaching the server, the command is authorized based on the user's *local* role.

```
switch(config)# aaa authorization config-commands default group tac1 local
```

This example shows how to authorize configuration mode commands with TACACS+ server group *tacl*

- If the server is reachable, the command is allowed or not allowed based on the server response.
- If there is an error reaching the server, allow the command regardless of the local role.

```
switch# aaa authorization commands default group tacl none
```

This example shows how to authorize EXEC mode commands regardless of the local role

```
switch# aaa authorization commands default none
```

This example shows how to authorize EXEC mode commands using the local role for authorization.

```
switch# aaa authorization commands default local
```

**Table 3: Related Commands**

Command	Descriptions
aaa server group	Configures AAA server groups.
feature tacacs+	Enables TACACS+.
tacacs-server host	Configures a TACACS+ server.

## Enabling MSCHAP Authentication

Microsoft Challenge Handshake Authentication Protocol (MSCHAP) is the Microsoft version of CHAP. You can use MSCHAP for user logins to a Cisco Nexus 5000 Series switch through a remote authentication server (RADIUS or TACACS+).

By default, the Cisco Nexus 5000 Series switch uses Password Authentication Protocol (PAP) authentication between the switch and the remote server. If you enable MSCHAP, you need to configure your RADIUS server to recognize the MSCHAP vendor-specific attributes (VSAs).

The following table describes the RADIUS VSAs required for MSCHAP.

**Table 4: MSCHAP RADIUS VSAs**

Vendor-ID Number	Vendor-Type Number	VSA	Description
311	11	MSCHAP-Challenge	Contains the challenge sent by an AAA server to an MSCHAP user. It can be used in both Access-Request and Access-Challenge packets.
211	11	MSCHAP-Response	Contains the response value provided by an MSCHAP user in response to the challenge.

Vendor-ID Number	Vendor-Type Number	VSA	Description
			It is only used in Access-Request packets.

To enable MSCHAP authentication, perform this task:

## SUMMARY STEPS

1. switch# **configure terminal**
2. switch(config)# **aaa authentication login mschap enable**
3. switch(config)# **exit**
4. (Optional) switch# **show aaa authentication login mschap**
5. (Optional) switch# **copy running-config startup-config**

## DETAILED STEPS

	Command or Action	Purpose
<b>Step 1</b>	switch# <b>configure terminal</b>	Enters configuration mode.
<b>Step 2</b>	switch(config)# <b>aaa authentication login mschap enable</b>	Enables MS-CHAP authentication. The default is disabled.
<b>Step 3</b>	switch(config)# <b>exit</b>	Exits configuration mode.
<b>Step 4</b>	switch# <b>show aaa authentication login mschap</b>	(Optional) Displays the MS-CHAP configuration.
<b>Step 5</b>	switch# <b>copy running-config startup-config</b>	(Optional) Copies the running configuration to the startup configuration.

### Related Topics

- [About VSAs, page 14](#)

## Configuring AAA Accounting Default Methods

The Cisco Nexus 5000 Series switch supports TACACS+ and RADIUS methods for accounting. The switches report user activity to TACACS+ or RADIUS security servers in the form of accounting records. Each accounting record contains accounting attribute-value (AV) pairs and is stored on the AAA server.

When you activate AAA accounting, the Cisco Nexus 5000 Series switch reports these attributes as accounting records, which are then stored in an accounting log on the security server.

You can create default method lists defining specific accounting methods, which include the following:

- RADIUS server group—Uses the global pool of RADIUS servers for accounting.
- Specified server group—Uses a specified RADIUS or TACACS+ server group for accounting.

- Local—Uses the local username or password database for accounting.



**Note** If you have configured server groups and the server groups do not respond, by default the local database is used for authentication.

Before you configure AAA accounting default methods, configure RADIUS or TACACS+ server groups as needed.

To configure AAA accounting default methods, perform this task:

## SUMMARY STEPS

1. switch# **configure terminal**
2. switch(config)# **aaa accounting default {group group-list | local}**
3. switch(config)# **exit**
4. (Optional) switch# **show aaa accounting**
5. (Optional) switch# **copy running-config startup-config**

## DETAILED STEPS

	Command or Action	Purpose
<b>Step 1</b>	switch# <b>configure terminal</b>	Enters configuration mode.
<b>Step 2</b>	switch(config)# <b>aaa accounting default {group group-list   local}</b>	Configures default accounting method. One or more server group names can be specified in a space separated list.  The <i>group-list</i> argument consists of a space-delimited list of group names. The group names are of the following: <ul style="list-style-type: none"> <li>• <b>radius</b> —Uses the global pool of RADIUS servers for accounting.</li> <li>• <b>named-group</b> —Uses a named subset of TACACS+ or RADIUS servers for accounting.</li> </ul> The <b>local</b> method uses the local database for accounting.  The default method is <b>local</b> , which is used when no server groups are configured or when all the configured server group do not respond.
<b>Step 3</b>	switch(config)# <b>exit</b>	Exits configuration mode.
<b>Step 4</b>	switch# <b>show aaa accounting</b>	(Optional) Displays the configuration AAA accounting default methods.
<b>Step 5</b>	switch# <b>copy running-config startup-config</b>	(Optional) Copies the running configuration to the startup configuration.

## Using AAA Server VSAs

### About VSAs

You can use vendor-specific attributes (VSAs) to specify the Cisco Nexus 5000 Series user roles and SNMPv3 parameters on AAA servers.

The Internet Engineering Task Force (IETF) draft standard specifies a method for communicating VSAs between the network access server and the RADIUS server. The IETF uses attribute 26. VSAs allow vendors to support their own extended attributes that are not suitable for general use. The Cisco RADIUS implementation supports one vendor-specific option using the format recommended in the specification. The Cisco vendor ID is 9, and the supported option is vendor type 1, which is named `cisco-av-pair`. The value is a string with the following format:

```
protocol : attribute separator value *
```

The protocol is a Cisco attribute for a particular type of authorization, separator is an equal sign (=) for mandatory attributes, and an asterisk (\*) indicates optional attributes.

When you use RADIUS servers for authentication on a Nexus 5000 Series switch, the RADIUS protocol directs the RADIUS server to return user attributes, such as authorization information, along with authentication results. This authorization information is specified through VSAs.

### VSA Format

The following VSA protocol options are supported by the Cisco Nexus 5000 Series switches:

- Shell—Used in access-accept packets to provide user profile information.
- Accounting—Used in accounting-request packets. If a value contains any white spaces, put it within double quotation marks.

The following attributes are supported by the Cisco Nexus 5000 Series switches:

- roles—Lists all the roles assigned to the user. The value field is a string that stores the list of group names delimited by white space.
- accountinginfo—Stores additional accounting information in addition to the attributes covered by a standard RADIUS accounting protocol. This attribute is sent only in the VSA portion of the Account-Request frames from the RADIUS client on the switch, and it can only be used with the accounting protocol-related PDUs.

## Specifying Switch User Roles and SNMPv3 Parameters on AAA Servers

You can use the VSA `cisco-av-pair` on AAA servers to specify user role mapping for the Cisco Nexus 5000 Series switch using this format:

```
shell:roles="roleA roleB ..."
```

If you do not specify the role option in the `cisco-av-pair` attribute, the default user role is `network-operator`.

You can also specify your SNMPv3 authentication and privacy protocol attributes as follows:

```
shell:roles="roleA roleB..." snmpv3:auth=SHA priv=AES-128
```

The SNMPv3 authentication protocol options are SHA and MD5. The privacy protocol options are AES-128 and DES. If you do not specify these options in the `cisco-av-pair` attribute, MD5 and DES are the default authentication protocols.

For additional information, see the Configuring User Accounts and RBAC chapter in the *Cisco Nexus 5000 Series NX-OS System Management Configuration Guide*.

## Displaying and Clearing the Local AAA Accounting Log

The Cisco Nexus 5000 Series switch maintains a local log for the AAA accounting activity. To display this log and clear it, perform this task:

### SUMMARY STEPS

1. `switch# show accounting log [size] [start-time year month day hh : mm : ss]`
2. (Optional) `switch# clear accounting log`

### DETAILED STEPS

	Command or Action	Purpose
Step 1	<code>switch# show accounting log [size] [start-time year month day hh : mm : ss]</code>	Displays the accounting log contents. By default, the command output contains up to 250,000 bytes of the accounting log. You can use the size argument to limit command output. The range is from 0 to 250000 bytes. You can also specify a start time for the log output.
Step 2	<code>switch# clear accounting log</code>	(Optional) Clears the accounting log contents.

## Verifying AAA Configuration

To display AAA configuration information, perform one of the following tasks:

### SUMMARY STEPS

1. `show aaa accounting`
2. `show aaa authentication [login {error-enable | mschap}]`
3. `show aaa authorization`
4. `show aaa groups`
5. `show running-config aaa [all]`
6. `show startup-config aaa`

## DETAILED STEPS

	Command or Action	Purpose
Step 1	<code>show aaa accounting</code>	Displays AAA accounting configuration.
Step 2	<code>show aaa authentication [login {error-enable   mschap}]</code>	Displays AAA authentication information.
Step 3	<code>show aaa authorization</code>	Displays AAA authorization information.
Step 4	<code>show aaa groups</code>	Displays the AAA server group configuration.
Step 5	<code>show running-config aaa [all]</code>	Displays the AAA configuration in the running configuration.
Step 6	<code>show startup-config aaa</code>	Displays the AAA configuration in the startup configuration.

## Example AAA Configuration

The following example shows how to configure AAA:

```
switch(config)# aaa authentication login default group radius
switch(config)# aaa authentication login console group radius
switch(config)# aaa accounting default group radius
```

## Default AAA Settings

The following table lists the default settings for AAA parameters.

**Table 5: Default AAA Parameters**

Parameters	Default
Console authentication method	local
Default authentication method	local
Login authentication failure messages	Disabled
MSCHAP authentication	Disabled
Default accounting method	local
Accounting log display length	250 KB