



Configuring Authentication, Authorization, and Accounting

This chapter contains the following sections:

- [Information About AAA, page 1](#)
- [Prerequisites for Remote AAA, page 5](#)
- [Guidelines and Limitations for AAA, page 6](#)
- [Configuring AAA, page 6](#)
- [Monitoring and Clearing the Local AAA Accounting Log , page 13](#)
- [Verifying the AAA Configuration, page 14](#)
- [Configuration Examples for AAA, page 14](#)
- [Default AAA Settings, page 15](#)

Information About AAA

AAA Security Services

The authentication, authorization, and accounting (AAA) features allows you to verify the identity of, grant access to, and track the actions of users who manage Cisco Nexus devices. The Cisco Nexus device supports Remote Access Dial-In User Service (RADIUS) or Terminal Access Controller Access Control device Plus (TACACS+) protocols.

Based on the user ID and password that you provide, the switches perform local authentication or authorization using the local database or remote authentication or authorization using one or more AAA servers. A preshared secret key provides security for communication between the switch and AAA servers. You can configure a common secret key for all AAA servers or for only a specific AAA server.

AAA security provides the following services:

- **Authentication**—Identifies users, including login and password dialog, challenge and response, messaging support, and, encryption depending on the security protocol that you select.

- Authorization—Provides access control.

Authorization to access a Cisco Nexus device is provided by attributes that are downloaded from AAA servers. Remote security servers, such as RADIUS and TACACS+, authorize users for specific rights by associating attribute-value (AV) pairs, which define those rights with the appropriate user.

- Accounting—Provides the method for collecting information, logging the information locally, and sending the information to the AAA server for billing, auditing, and reporting.

**Note**

The Cisco NX-OS software supports authentication, authorization, and accounting independently. For example, you can configure authentication and authorization without configuring accounting.

Benefits of Using AAA

AAA provides the following benefits:

- Increased flexibility and control of access configuration
- Scalability
- Standardized authentication methods, such as RADIUS and TACACS+
- Multiple backup devices

Remote AAA Services

Remote AAA services provided through RADIUS and TACACS+ protocols have the following advantages over local AAA services:

- User password lists for each switch in the fabric are easier to manage.
- AAA servers are already deployed widely across enterprises and can be easily used for AAA services.
- The accounting log for all switches in the fabric can be centrally managed.
- User attributes for each switch in the fabric are easier to manage than using the local databases on the switches.

AAA Server Groups

You can specify remote AAA servers for authentication, authorization, and accounting using server groups. A server group is a set of remote AAA servers that implement the same AAA protocol. A server group provides for failover servers if a remote AAA server fails to respond. If the first remote server in the group fails to respond, the next remote server in the group is tried until one of the servers sends a response. If all the AAA servers in the server group fail to respond, that server group option is considered a failure. If required, you can specify multiple server groups. If a switch encounters errors from the servers in the first group, it tries the servers in the next server group.

AAA Service Configuration Options

On Cisco Nexus devices, you can have separate AAA configurations for the following services:

- User Telnet or Secure Shell (SSH) login authentication
- Console login authentication
- User management session accounting

The following table lists the CLI commands for each AAA service configuration option.

Table 1: AAA Service Configuration Commands

AAA Service Configuration Option	Related Command
Telnet or SSH login	aaa authentication login default
Console login	aaa authentication login console
User session accounting	aaa accounting default

You can specify the following authentication methods for the AAA services:

- RADIUS server groups—Uses the global pool of RADIUS servers for authentication.
- Specified server groups—Uses specified RADIUS or TACACS+ server groups for authentication.
- Local—Uses the local username or password database for authentication.
- None—Uses only the username.



Note

If the method is for all RADIUS servers, instead of a specific server group, the Cisco Nexus devices choose the RADIUS server from the global pool of configured RADIUS servers in the order of configuration. Servers from this global pool are the servers that can be selectively configured in a RADIUS server group on the Cisco Nexus devices.

The following table describes the AAA authentication methods that you can configure for the AAA services.

Table 2: AAA Authentication Methods for AAA Services

AAA Service	AAA Methods
Console login authentication	Server groups, local, and none
User login authentication	Server groups, local, and none
User management session accounting	Server groups and local

**Note**

For console login authentication, user login authentication, and user management session accounting, the Cisco Nexus devices try each option in the order specified. The local option is the default method when other configured options fail.

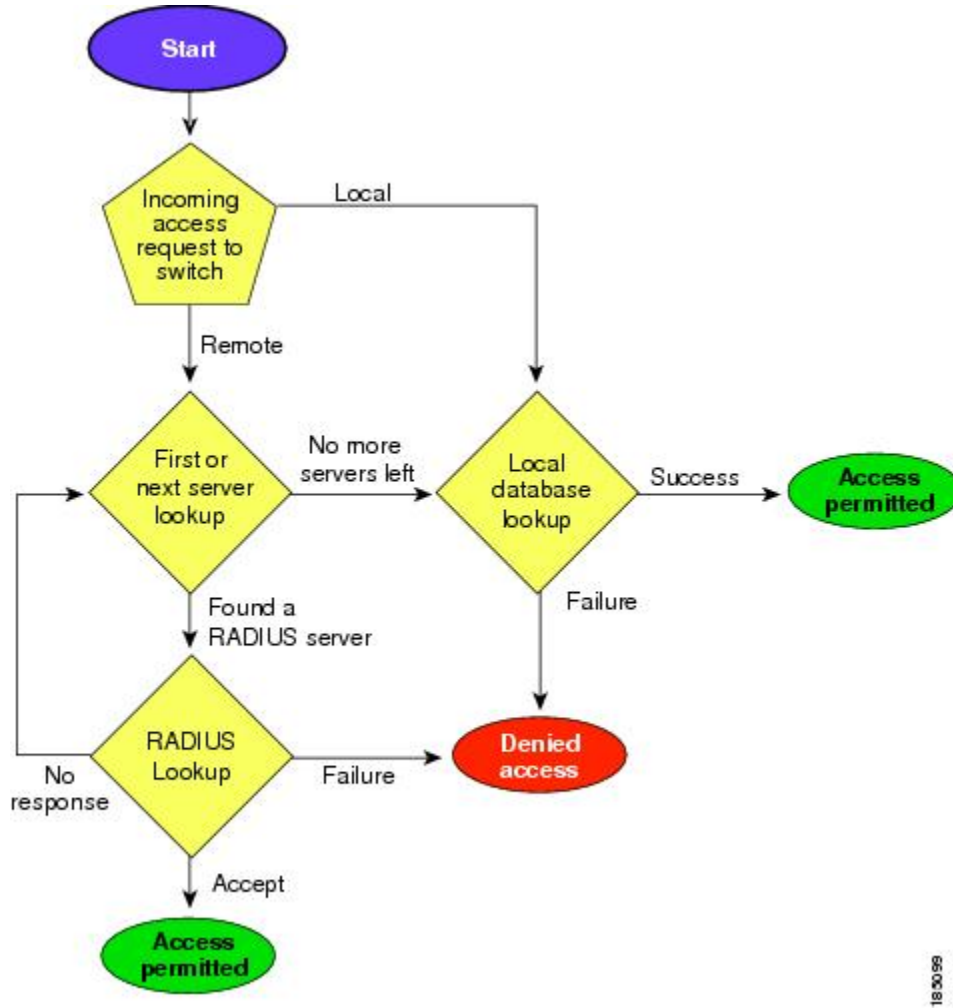
Authentication and Authorization Process for User Logins

The authentication and authorization process for user login is as occurs:

- When you log in to the required Cisco Nexus device, you can use the Telnet, SSH, Fabric Manager or Device Manager, or console login options.
- When you have configured the AAA server groups using the server group authentication method, the Cisco Nexus device sends an authentication request to the first AAA server in the group as follows:
If the AAA server fails to respond, then the next AAA server is tried and so on until the remote server responds to the authentication request.
If all AAA servers in the server group fail to respond, the servers in the next server group are tried.
If all configured methods fail, the local database is used for authentication.
- If a Cisco Nexus device successfully authenticates you through a remote AAA server, the following conditions apply:
If the AAA server protocol is RADIUS, user roles specified in the cisco-av-pair attribute are downloaded with an authentication response.
If the AAA server protocol is TACACS+, another request is sent to the same server to get the user roles specified as custom attributes for the shell.
- If your username and password are successfully authenticated locally, the Cisco Nexus device logs you in and assigns you the roles configured in the local database.

The following figure shows a flowchart of the authentication and authorization process.

Figure 1: Authentication and Authorization Flow for User Login



Note "No more server groups left" means that there is no response from any server in all server groups.
 "No more servers left" means that there is no response from any server within this server group.

Prerequisites for Remote AAA

Remote AAA servers have the following prerequisites:

- At least one RADIUS or TACACS+ server must be IP reachable.
- The Cisco Nexus device is configured as a client of the AAA servers.

- The preshared secret key is configured on the Cisco Nexus device and on the remote AAA servers.
- The remote server responds to AAA requests from the Cisco Nexus device.

Guidelines and Limitations for AAA

The Cisco Nexus devices do not support all numeric usernames, whether created with TACACS+ or RADIUS, or created locally. If an all numeric username exists on an AAA server and is entered during a login, the Cisco Nexus device still logs in the user.



Caution

You should not create user accounts with usernames that are all numeric.

Configuring AAA

Configuring Console Login Authentication Methods

The authentication methods include the following:

- Global pool of RADIUS servers
- Named subset of RADIUS or TACACS+ servers
- Local database on the Cisco Nexus device.
- Username only (**none**)

The default method is local.



Note

The **group radius** and **group *server-name*** forms of the **aaa authentication** command are used for a set of previously defined RADIUS servers. Use the **radius server-host** command to configure the host servers. Use the **aaa group server radius** command to create a named group of servers.

Before you configure console login authentication methods, configure RADIUS or TACACS+ server groups as needed.

Procedure

	Command or Action	Purpose
Step 1	switch# configure terminal	Enters configuration mode.
Step 2	switch(config)# aaa authentication login console { group <i>group-list</i> [none] local none }	Configures login authentication methods for the console. The <i>group-list</i> argument consists of a space-delimited list of group names. The group names are the following:

	Command or Action	Purpose
		<ul style="list-style-type: none"> • radius —Uses the global pool of RADIUS servers for authentication. • named-group —Uses a named subset of TACACS+ or RADIUS servers for authentication. <p>The local method uses the local database for authentication. The none method uses the username only.</p> <p>The default console login method is local, which is used when no methods are configured or when all of the configured methods fail to respond.</p>
Step 3	switch(config)# exit	Exits configuration mode.
Step 4	switch# show aaa authentication	(Optional) Displays the configuration of the console login authentication methods.
Step 5	switch# copy running-config startup-config	(Optional) Copies the running configuration to the startup configuration.

The following example shows how to configure authentication methods for the console login:

```
switch# configure terminal
switch(config)# aaa authentication login console group radius
switch(config)# exit
switch# show aaa authentication
switch# copy running-config startup-config
```

Configuring Default Login Authentication Methods

The default method is local.

Before you configure default login authentication methods, configure RADIUS or TACACS+ server groups as needed. To configure default login authentication methods, perform this task:

Procedure

	Command or Action	Purpose
Step 1	switch# configure terminal	Enters configuration mode.
Step 2	switch(config)# aaa authentication login default {group group-list [none] local none}	<p>Configures the default authentication methods.</p> <p>The <i>group-list</i> argument consists of a space-delimited list of group names. The group names are the following:</p> <ul style="list-style-type: none"> • radius —Uses the global pool of RADIUS servers for authentication.

	Command or Action	Purpose
		<ul style="list-style-type: none"> <i>named-group</i> —Uses a named subset of TACACS+ or RADIUS servers for authentication. <p>The local method uses the local database for authentication. The none method uses the username only.</p> <p>The default login method is local, which is used when no methods are configured or when all of the configured methods do not respond.</p>
Step 3	switch(config)# exit	Exits configuration mode.
Step 4	switch# show aaa authentication	(Optional) Displays the configuration of the default login authentication methods.
Step 5	switch# copy running-config startup-config	(Optional) Copies the running configuration to the startup configuration.

Enabling Login Authentication Failure Messages

When you log in, the login is processed by the local user database if the remote AAA servers do not respond. If you have enabled the displaying of login failure messages, the following message is displayed:

```
Remote AAA servers unreachable; local authentication done.
Remote AAA servers unreachable; local authentication failed.
```

Procedure

	Command or Action	Purpose
Step 1	switch# configure terminal	Enters configuration mode.
Step 2	switch(config)# aaa authentication login error-enable	Enables login authentication failure messages. The default is disabled.
Step 3	switch(config)# exit	Exits configuration mode.
Step 4	switch# show aaa authentication	(Optional) Displays the login failure message configuration.
Step 5	switch# copy running-config startup-config	(Optional) Copies the running configuration to the startup configuration.

Configuring AAA Command Authorization

When a TACACS+ server authorization method is configured, you can authorize every command that a user executes with the TACACS+ server which includes all EXEC mode commands and all configuration mode commands.

The authorization methods include the following:

- Group—TACACS+ server group
- Local—Local role-based authorization
- None—No authorization is performed

The default method is Local.



Note

There is no authorization on the console session.

Before You Begin

You must enable TACACS+ before configuring AAA command authorization.

Procedure

	Command or Action	Purpose
Step 1	configure terminal Example: switch# configure terminal switch(config)#	Enters global configuration mode.
Step 2	aaa authorization {commands config-commands} {default} {[group group-name] [local]} {[group group-name] [none]} Example: switch(config)# aaa authorization config-commands default group tac1 Example: switch# aaa authorization commands default group tac1	Configures authorization parameters. Use the commands keyword to authorize EXEC mode commands. Use the config-commands keyword to authorize configuration mode commands. Use the group , local , or none keywords to identify the authorization method.

The following example shows how to authorize EXEC mode commands with TACACS+ server group *tac1*:

```
switch# aaa authorization commands default group tac1
```

The following example shows how to authorize configuration mode commands with TACACS+ server group *tac1*:

```
switch(config)# aaa authorization config-commands default group tac1
```

The following example shows how to authorize configuration mode commands with TACACS+ server group *tac1*:

- If the server is reachable, the command is allowed or not allowed based on the server response.
- If there is an error reaching the server, the command is authorized based on the user's *local* role.

```
switch(config)# aaa authorization config-commands default group tac1 local
```

The following example shows how to authorize configuration mode commands with TACACS+ server group *tac1*:

- If the server is reachable, the command is allowed or not allowed based on the server response.
- If there is an error reaching the server, allow the command regardless of the local role.

```
switch# aaa authorization commands default group tac1 none
```

The following example shows how to authorize EXEC mode commands regardless of the local role:

```
switch# aaa authorization commands default none
```

The following example shows how to authorize EXEC mode commands using the local role for authorization:

```
switch# aaa authorization commands default local
```

Enabling MSCHAP Authentication

Microsoft Challenge Handshake Authentication Protocol (MSCHAP) is the Microsoft version of CHAP. You can use MSCHAP for user logins to a Cisco Nexus device through a remote authentication server (RADIUS or TACACS+).

By default, the Cisco Nexus device uses Password Authentication Protocol (PAP) authentication between the switch and the remote server. If you enable MSCHAP, you must configure your RADIUS server to recognize the MSCHAP vendor-specific attributes (VSAs).

The following table describes the RADIUS VSAs required for MSCHAP.

Table 3: MSCHAP RADIUS VSAs

Vendor-ID Number	Vendor-Type Number	VSA	Description
311	11	MSCHAP-Challenge	Contains the challenge sent by an AAA server to an MSCHAP user. It can be used in both Access-Request and Access-Challenge packets.

Vendor-ID Number	Vendor-Type Number	VSA	Description
211	11	MSCHAP-Response	Contains the response value provided by an MSCHAP user in response to the challenge. It is only used in Access-Request packets.

Procedure

	Command or Action	Purpose
Step 1	switch# configure terminal	Enters configuration mode.
Step 2	switch(config)# aaa authentication login mschap enable	Enables MS-CHAP authentication. The default is disabled.
Step 3	switch(config)# exit	Exits configuration mode.
Step 4	switch# show aaa authentication login mschap	(Optional) Displays the MS-CHAP configuration.
Step 5	switch# copy running-config startup-config	(Optional) Copies the running configuration to the startup configuration.

Configuring AAA Accounting Default Methods

The Cisco Nexus device supports TACACS+ and RADIUS methods for accounting. The switches report user activity to TACACS+ or RADIUS security servers in the form of accounting records. Each accounting record contains accounting attribute-value (AV) pairs and is stored on the AAA server.

When you activate AAA accounting, the Cisco Nexus device reports these attributes as accounting records, which are then stored in an accounting log on the security server.

You can create default method lists defining specific accounting methods, which include the following:

- RADIUS server group—Uses the global pool of RADIUS servers for accounting.
- Specified server group—Uses a specified RADIUS or TACACS+ server group for accounting.
- Local—Uses the local username or password database for accounting.



Note

If you have configured server groups and the server groups do not respond, by default, the local database is used for authentication.

Before You Begin

Before you configure AAA accounting default methods, configure RADIUS or TACACS+ server groups as needed.

Procedure

	Command or Action	Purpose
Step 1	switch# configure terminal	Enters configuration mode.
Step 2	switch(config)# aaa accounting default {group <i>group-list</i> local}	<p>Configures the default accounting method. One or more server group names can be specified in a space-separated list.</p> <p>The <i>group-list</i> argument consists of a space-delimited list of group names. The group names are the following:</p> <ul style="list-style-type: none"> • radius —Uses the global pool of RADIUS servers for accounting. • named-group —Uses a named subset of TACACS+ or RADIUS servers for accounting. <p>The local method uses the local database for accounting.</p> <p>The default method is local, which is used when no server groups are configured or when all the configured server group do not respond.</p>
Step 3	switch(config)# exit	Exits configuration mode.
Step 4	switch# show aaa accounting	(Optional) Displays the configuration AAA accounting default methods.
Step 5	switch# copy running-config startup-config	(Optional) Copies the running configuration to the startup configuration.

Using AAA Server VSAs

VSAs

You can use vendor-specific attributes (VSAs) to specify the Cisco Nexus device user roles and SNMPv3 parameters on AAA servers.

The Internet Engineering Task Force (IETF) draft standard specifies a method for communicating VSAs between the network access server and the RADIUS server. The IETF uses attribute 26. VSAs allow vendors to support their own extended attributes that are not suitable for general use. The Cisco RADIUS implementation supports one vendor-specific option using the format recommended in the specification. The Cisco vendor ID is 9, and the supported option is vendor type 1, which is named `cisco-av-pair`. The value is a string with the following format:

```
protocol : attribute separator value *
```

The protocol is a Cisco attribute for a particular type of authorization, separator is an equal sign (=) for mandatory attributes, and an asterisk (*) indicates optional attributes.

When you use RADIUS servers for authentication on a Cisco Nexus device, the RADIUS protocol directs the RADIUS server to return user attributes, such as authorization information, with authentication results. This authorization information is specified through VSAs.

VSA Format

The following VSA protocol options are supported by the Cisco Nexus device:

- Shell—Used in access-accept packets to provide user profile information.
- Accounting—Used in accounting-request packets. If a value contains any white spaces, put it within double quotation marks.

The following attributes are supported by the Cisco Nexus device:

- roles—Lists all the roles assigned to the user. The value field is a string that stores the list of group names delimited by white space.
- accountinginfo—Stores additional accounting information in addition to the attributes covered by a standard RADIUS accounting protocol. This attribute is sent only in the VSA portion of the Account-Request frames from the RADIUS client on the switch, and it can only be used with the accounting protocol-related PDUs.

Specifying Switch User Roles and SNMPv3 Parameters on AAA Servers

You can use the VSA `cisco-av-pair` on AAA servers to specify user role mapping for the Cisco Nexus device using this format:

```
shell:roles="roleA roleB ..."
```

If you do not specify the role option in the `cisco-av-pair` attribute, the default user role is `network-operator`.



Note

For information on Cisco Unified Wireless Network TACACS+ configurations and to change the user roles, see [Cisco Unified Wireless Network TACACS+ Configuration](#).

You can also specify your SNMPv3 authentication and privacy protocol attributes as follows:

```
shell:roles="roleA roleB..." snmpv3:auth=SHA priv=AES-128
```

The SNMPv3 authentication protocol options are SHA and MD5. The privacy protocol options are AES-128 and DES. If you do not specify these options in the `cisco-av-pair` attribute, MD5 and DES are the default authentication protocols.

For additional information, see the Configuring User Accounts and RBAC chapter in the System Management Configuration Guide for your Cisco Nexus device.

Monitoring and Clearing the Local AAA Accounting Log

The Cisco Nexus device maintains a local log for the AAA accounting activity.

Procedure

	Command or Action	Purpose
Step 1	switch# show accounting log [<i>size</i>] [<i>start-time year month day hh : mm : ss</i>]	Displays the accounting log contents. By default, the command output contains up to 250,000 bytes of the accounting log. You can use the size argument to limit command output. The range is from 0 to 250000 bytes. You can also specify a start time for the log output.
Step 2	switch# clear accounting log	(Optional) Clears the accounting log contents.

Verifying the AAA Configuration

To display AAA configuration information, perform one of the following tasks:

Procedure

	Command or Action	Purpose
Step 1	show aaa accounting	Displays AAA accounting configuration.
Step 2	show aaa authentication [login { <i>error-enable</i> <i>mschap</i> }]	Displays AAA authentication information.
Step 3	show aaa authorization	Displays AAA authorization information.
Step 4	show aaa groups	Displays the AAA server group configuration.
Step 5	show running-config aaa [<i>all</i>]	Displays the AAA configuration in the running configuration.
Step 6	show startup-config aaa	Displays the AAA configuration in the startup configuration.

Configuration Examples for AAA

The following example shows how to configure AAA:

```
switch(config)# aaa authentication login default group radius
switch(config)# aaa authentication login console group radius
switch(config)# aaa accounting default group radius
```

Default AAA Settings

The following table lists the default settings for AAA parameters.

Table 4: Default AAA Parameters

Parameters	Default
Console authentication method	local
Default authentication method	local
Login authentication failure messages	Disabled
MSCHAP authentication	Disabled
Default accounting method	local
Accounting log display length	250 KB

