



Using PowerOn Auto Provisioning

This chapter contains the following sections:

- [Information About PowerOn Auto Provisioning](#), on page 1
- [Guidelines and Limitations for POAP](#), on page 7
- [Setting Up the Network Environment To Use POAP](#), on page 8
- [Configuring a Switch Using POAP](#), on page 9
- [Verifying the Device Configuration](#), on page 9
- [Related Documents for POAP](#), on page 10

Information About PowerOn Auto Provisioning

PowerOn Auto Provisioning (POAP) automates the process of upgrading software images and installing configuration files on Cisco Nexus switches that are being deployed in the network for the first time.

When a Cisco Nexus Series switch with the POAP feature boots and does not find the startup configuration, the switch enters POAP mode and checks for a USB device containing the configuration script file. If it finds one, it checks that device to see if it also contains the software image files and the switch configuration file.

If the switch does not find a USB device, or if the USB device does not contain the needed image files or switch configuration file, the switch also locates a DHCP server and bootstraps itself with its interface IP address, gateway, and DNS server IP addresses. The switch then obtains the IP address of a TFTP server or the URL of an HTTP server from which it downloads the necessary configuration files.



Note

The DHCP information is used only during the POAP process if any configuration files are unavailable on the USB device.

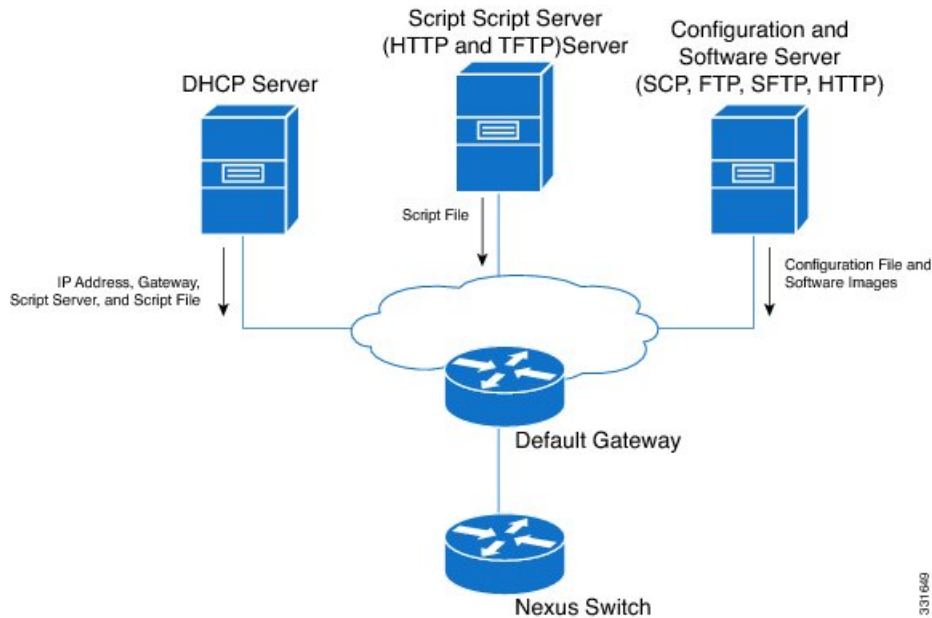
Network Requirements for POAP

POAP requires the following network infrastructure:

- A DHCP server to bootstrap the interface IP address, gateway address, DNS server, and log server
- A TFTP or HTTP server containing the configuration script used to automate the software image installation and configuration process

- One or more servers containing the desired software images and configuration files

Figure 1: POAP Network Infrastructure



Disabling POAP

POAP is enabled when there is no configuration in the system. It runs as a part of bootup. However, you can bypass POAP enablement during initial setup. If you want to disable POAP permanently (even when there is no configuration in the system), you can use the 'system no poap' command. This command ensures that POAP is not started during the next boot (even if there is no configuration). To enable POAP, use the 'system poap' command or the 'write erase poap' command. The 'write erase poap' command erases the POAP flag and enables POAP.

- Example: Disabling POAP

```
switch# system no poap
switch# sh boot
Current Boot Variables:
  sup-1
NXOS variable = bootflash:/nxos.9.2.1.125.bin
Boot POAP Disabled

POAP permanently disabled using 'system no poap'

Boot Variables on next reload:

sup-1
NXOS variable = bootflash:/nxos.9.2.1.125.bin
Boot POAP Disabled

POAP permanently disabled using 'system no poap'
```

```
switch# sh system poap
System-wide POAP is disabled using exec command 'system no poap'
POAP will be bypassed on write-erase reload.
(Perpetual POAP cannot be enabled when system-wide POAP is disabled)
```

- Example: Enabling POAP

```
switch# system poap

switch# sh system poap

System-wide POAP is enabled
```

- Example: Erase POAP

```
switch# write erase poap
This command will erase the system wide POAP disable flag only if it is set.
Do you wish to proceed anyway? (y/n) [n] y
System wide POAP disable flag erased.

switch# sh system poap
System-wide POAP is enabled
```

POAP Configuration Script

The reference script supplied by Cisco supports the following functionality:

- Downloads the software image (system and kickstart images) if the files do not already exist on the switch. The software image is installed on the switch and is used at the next reboot.
- Schedules the downloaded configuration to be applied at the next switch reboot.
- Stores the configuration as the startup-configuration.

We provide sample configuration scripts that were developed using the Python programming language and Tool Command Language (Tcl). You can customize one of these scripts to meet the requirements of your network environment.

For information about customizing this script using Python, see the *Cisco NX-OS Python API Reference Guide* for your platform.

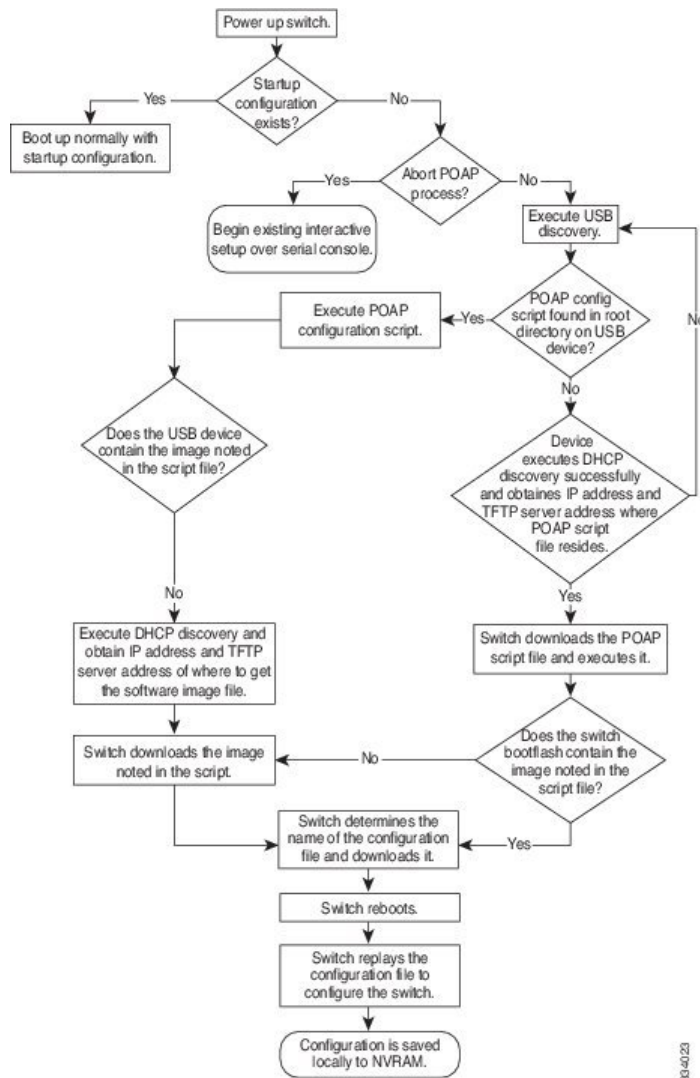
POAP Process

The POAP process has the following phases:

1. Power up
2. USB discovery
3. DHCP discovery
4. Script execution
5. Post-installation reload

Within these phases, other process and decision points occur. The following illustration shows a flow diagram of the POAP process.

Figure 2: POAP Process



33-4023

Power-Up Phase

When you power-up a switch for the first time, it loads the software image installed at manufacturing and tries to find a configuration file to apply after the switch boots. When no configuration file is found, POAP mode starts.

During startup, a prompt appears asking if you want to abort POAP and continue with normal setup. You can choose to exit or continue with POAP.



Note No user intervention is required for POAP to continue. The prompt that asks if you want to abort POAP remains available until the POAP process is complete.

If you exit POAP mode, you enter the normal interactive setup script. If you continue in POAP mode, all the front-panel interfaces are set up in Layer 2 mode, which ensures that the device does not participate in any Layer 2 forwarding.

USB Discovery Phase

When POAP starts, the process searches the root directory of all accessible USB devices for the POAP configuration script file (either the Python script file, `poap_script.py`, or the Tcl script file, `poap_script.tcl`), configuration files, and system and kickstart images.

If the configuration script file is found on a USB device, POAP begins running the configuration script. If the configuration script file is not found on the USB device, POAP executes DHCP discovery. (When failures occur, the POAP process alternates between USB discovery and DHCP discovery, until POAP succeeds or you manually abort the POAP process.)

If the software image and switch configuration files specified in the configuration script are present, POAP uses those files to install the software and configure the switch. If the software image and switch configuration files are not on the USB device, POAP does some cleanup and starts DHCP phase from the beginning.

DHCP Discovery Phase

The switch sends out DHCP discover messages on all of the active interfaces (including the mgmt interface) soliciting DHCP offers from the DHCP server or servers. The DHCP client on the Cisco Nexus switch uses the switch serial number or its MAC address in the client-identifier option to identify itself to the DHCP server. The DHCP server can use this identifier to send information, such as the IP address and script file name, back to the DHCP client.

POAP requires a minimum DHCP lease period of 3600 seconds (1 hour). POAP checks the DHCP lease period. If the DHCP lease period is set to less than 3600 seconds (1 hour), POAP does not complete DHCP negotiation.

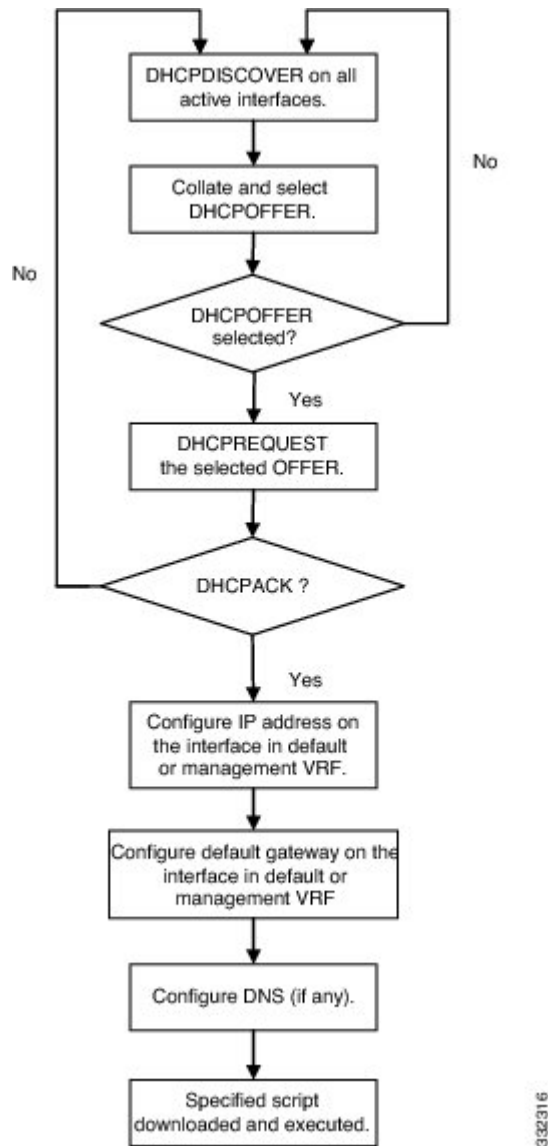
The DHCP discover message also mandates some of the options and solicits these options from the DHCP server after receiving the DHCP OFFER from the DHCP server.

- Option 66 (TFTP server name) or Option 150 (TFTP server address)—The DHCP server relays the TFTP server name or TFTP server address to the DHCP client. The DHCP client uses this information to contact the TFTP server to obtain the script file.
- IP address
- Default gateway
- Option 67 (Bootfile name)—The DHCP server relays the bootfile name to the DHCP client. The bootfile name includes the complete path to the bootfile on the TFTP server. The DHCP client uses this information to download the script file.

When multiple DHCP offers that meet the requirement are received, an offer is randomly chosen. The device completes the DHCP negotiation (request and acknowledgment) with the selected DHCP server, and the DHCP server assigns an IP address to the switch. If there is a failure in any of the subsequent steps in the POAP process, the IP address is released back to the DHCP server.

If no DHCP offers meet the requirements, the switch does not complete the DHCP negotiation (request and acknowledgment) and an IP address is not assigned. The POAP process is reinitiated until it succeeds or you manually abort the POAP process.

Figure 3: DHCP Discovery Phase



Script Execution Phase

Once the device has bootstrapped itself using the information in the DHCP acknowledgement, the switch downloads the script file from the TFTP server or the HTTP server.

The switch runs the configuration script, which downloads and installs the software image and downloads a switch-specific configuration file.

However, the configuration file is not applied to the switch at this point, because the software image currently running on the switch might not support all of the commands in the configuration file. After the switch reboots, it begins running the new software image, if one was installed. At that point, the configuration is applied to the switch.



Note If the switch loses connectivity, the script stops, and the switch reloads its original software images and bootup variables.

Post-Installation Reload Phase

The switch restarts and applies (replays) the configuration on the upgraded software image. Afterward, the switch copies the running configuration to the startup configuration.

Guidelines and Limitations for POAP

- The Cisco Nexus switch software image must support POAP for this feature to function.
- POAP can be triggered even when the startup-config is present using the **boot poap enable** command.
- Starting from Cisco NX-OS Release 7.0(3)I7(8) you can use `skip_multi_level` option in POAP and perform a `single_image` upgrade.
- If a LACP Layer 3 port-channel is configured on an uplink device connected to the Cisco Nexus device that is being bootstrapped using POAP, the port-channel is not active because all the member links are in a suspended state. Therefore, the Cisco Nexus device that is being bootstrapped using POAP cannot reach the DHCP server or any other infrastructure device needed for POAP. To work around this issue, configure a static L3 port-channel on the uplink device connected to the Cisco Nexus device that is being bootstrapped using POAP.
- If you use POAP to bootstrap a Cisco Nexus device that is a part of a vPC pair using static port-channels on the VPC links, the Cisco Nexus device activates all of its links upon POAP startup. The dually connected device at the end of the VPC links might start sending some or all of its traffic to the port-channel member links connected to the Cisco Nexus device, and the traffic would be lost.

To work around this issue, you can configure LACP on the vPC links so that the links do not incorrectly start forwarding traffic to the Cisco Nexus device that is being bootstrapped using POAP.

- Important POAP updates are logged in the syslog and are available from the serial console.
- Critical POAP errors are logged to the bootflash. The filename format is `date-time_poap_PID_[init,1,2].log`, where *date-time* is in the YYYYMMDD_hhmmss format and *PID* is the process ID.
- Script logs are saved in the bootflash directory. The filename format is `date-time_poap_PID_script.log`, where *date-time* is in the YYYYMMDD_hhmmss format and *PID* is the process ID.
- The Scheduler configuration cannot be replayed using POAP. The reason that the Scheduler configuration cannot be replayed is that it is associated with the user (for example "admin") that was logged in when the Scheduler configuration was created. Because the configuration replay using POAP is not associated with any specific user, the scheduler configuration cannot be replayed and fails.

Instead of configuring the Scheduler, configure the Embedded Event Manager (EEM). An EEM configuration can be downloaded and replayed using POAP.

- DHCP for NX-OS will be successful, if the DHCP response is set to IP address 255.255.255.255. Since not all the DHCP server including IOS DHCP server sends the DHCP responses to 255.255.255.255, NX-OS is unable to get an IP address as a result POAP does not succeed.
- Beginning with NX-OS 7.0(3)I7(4), RFC 3004 (User Class Option for DHCP) supports POAP over IPv6 on Nexus 3000 Series switches. However, POAP over IPv6 is not supported on Nexus 3500 switches.
- For secure POAP, ensure that DHCP snooping is enabled.
- To support POAP, set firewall rules to block unintended or malicious DHCP servers.
- To maintain system security and make POAP more secure, configure the following:
 - Enable DHCP snooping.
 - Set firewall rules to block unintended or malicious DHCP servers.
- POAP is supported on both MGMT ports and in-band ports.

Setting Up the Network Environment To Use POAP

SUMMARY STEPS

1. Modify the basic configuration script provided by Cisco or create your own script.
2. (Optional) Put the POAP configuration script and any other desired software image and switch configuration files on a USB device accessible to the switch.
3. Deploy a DHCP server and configure it with the interface, gateway, and TFTP server IP addresses and a bootfile with the path and name of the configuration script file. (This information is provided to the switch when it first boots.)
4. Deploy a TFTP or HTTP server to host the configuration script.
5. Deploy one or more servers to host the software images and configuration files.

DETAILED STEPS

-
- | | |
|---------------|---|
| Step 1 | Modify the basic configuration script provided by Cisco or create your own script. |
| Step 2 | (Optional) Put the POAP configuration script and any other desired software image and switch configuration files on a USB device accessible to the switch. |
| Step 3 | <p>Deploy a DHCP server and configure it with the interface, gateway, and TFTP server IP addresses and a bootfile with the path and name of the configuration script file. (This information is provided to the switch when it first boots.)</p> <p>You do not need to deploy a DHCP server if all software image and switch configuration files are on the USB device.</p> |
| Step 4 | Deploy a TFTP or HTTP server to host the configuration script. |
| Step 5 | Deploy one or more servers to host the software images and configuration files. |
-

Configuring a Switch Using POAP

Before you begin

Make sure that the network environment is set up to use POAP. For more information, refer to the "Setting up the Network Environment to use POAP" section immediately preceding this section.

SUMMARY STEPS

1. Install the switch in the network.
2. Power on the switch.
3. (Optional) If you want to exit POAP mode and enter the normal interactive setup script, enter **y** (yes).

DETAILED STEPS

Step 1 Install the switch in the network.

Step 2 Power on the switch.

If no configuration file is found, the switch boots in POAP mode and displays a prompt that asks if you want to abort POAP and continue with a normal setup.

No entry is required to continue to boot in POAP mode.

Step 3 (Optional) If you want to exit POAP mode and enter the normal interactive setup script, enter **y** (yes).

The switch boots, and the POAP process begins. For more information, see the "POAP Process" section.

What to do next

Verify the configuration.

Verifying the Device Configuration

To verify the configuration, use one of the following commands:

Command	Purpose
show running-config	Displays the running configuration.
show startup-config	Displays the startup configuration.
show time-stamp running-config last-changed	Displays the timestamp when the running configuration was last changed.

For detailed information about the fields in the output from these commands, see the Cisco Nexus command reference for your device.

Related Documents for POAP

Related Topic	Document Title
Configuration Script	<i>Cisco Nexus 3000 Series NX-OS Python API Reference Guide</i>
DHCP Options and BOOTP Vendor Extensions	RFC2132— http://tools.ietf.org/html/rfc2132
TFTP Server Address Option for DHCPv4	RFC5859— http://tools.ietf.org/html/rfc5859