



# Configuring RADIUS

---

This chapter contains the following sections:

- [Configuring RADIUS, page 1](#)

## Configuring RADIUS

### Information About RADIUS

The Remote Access Dial-In User Service (RADIUS) distributed client/server system allows you to secure networks against unauthorized access. In the Cisco implementation, RADIUS clients run on Cisco Nexus 3000 Series switches and send authentication and accounting requests to a central RADIUS server that contains all user authentication and network service access information.

### RADIUS Network Environments

RADIUS can be implemented in a variety of network environments that require high levels of security while maintaining network access for remote users.

You can use RADIUS in the following network environments that require access security:

- Networks with multiple-vendor network devices, each supporting RADIUS.

For example, network devices from several vendors can use a single RADIUS server-based security database.

- Networks already using RADIUS.

You can add a Cisco Nexus 3000 Series switch with RADIUS to the network. This action might be the first step when you make a transition to a AAA server.

- Networks that require resource accounting.

You can use RADIUS accounting independent of RADIUS authentication or authorization. The RADIUS accounting functions allow data to be sent at the start and end of services, indicating the amount of resources (such as time, packets, bytes, and so on) used during the session. An Internet service provider (ISP) might use a freeware-based version of the RADIUS access control and accounting software to meet special security and billing needs.

- Networks that support authentication profiles.

Using the RADIUS server in your network, you can configure AAA authentication and set up per-user profiles. Per-user profiles enable the Nexus 5000 Series switch to better manage ports using their existing RADIUS solutions and to efficiently manage shared resources to offer different service-level agreements.

## RADIUS Operations

When a user attempts to log in and authenticate to a Cisco Nexus 3000 Series switch using RADIUS, the following process occurs:

- 1 The user is prompted for and enters a username and password.
- 2 The username and encrypted password are sent over the network to the RADIUS server.
- 3 The user receives one of the following responses from the RADIUS server:
  - ACCEPT—The user is authenticated.
  - REJECT—The user is not authenticated and is prompted to reenter the username and password, or access is denied.
  - CHALLENGE—A challenge is issued by the RADIUS server. The challenge collects additional data from the user.
  - CHANGE PASSWORD—A request is issued by the RADIUS server, asking the user to select a new password.

The ACCEPT or REJECT response is bundled with additional data that is used for EXEC or network authorization. You must first complete RADIUS authentication before using RADIUS authorization. The additional data included with the ACCEPT or REJECT packets consists of the following:

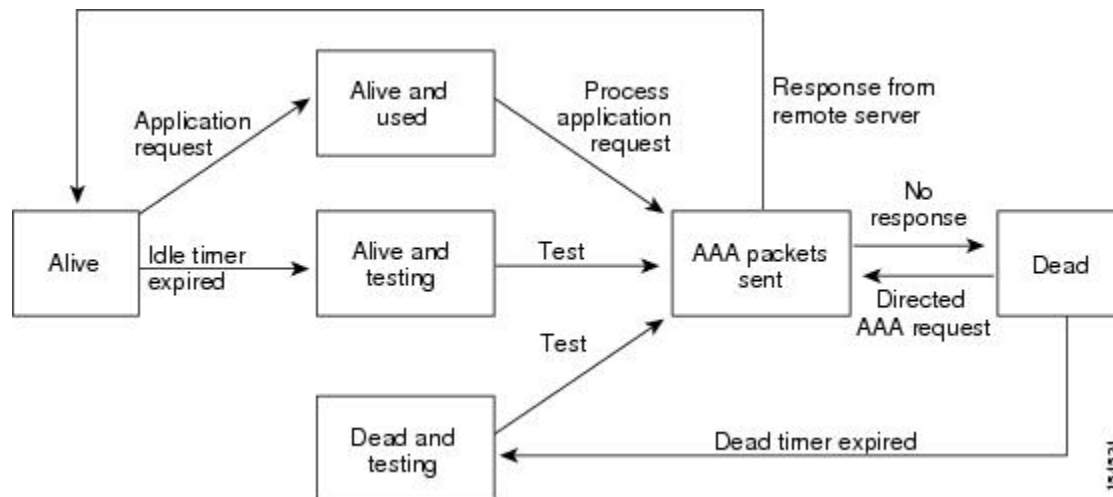
- Services that the user can access, including Telnet, rlogin, or local-area transport (LAT) connections, and Point-to-Point Protocol (PPP), Serial Line Internet Protocol (SLIP), or EXEC services.
- Connection parameters, including the host or client IPv4 address, access list, and user timeouts.

## RADIUS Server Monitoring

An unresponsive RADIUS server can cause delay in processing of AAA requests. You can configure the Cisco Nexus 3000 Series switch to periodically monitor a RADIUS server to check whether it is responding (or alive) to save time in processing AAA requests. The Cisco Nexus 3000 Series switch marks unresponsive RADIUS servers as dead and does not send AAA requests to any dead RADIUS servers. The switch periodically monitors the dead RADIUS servers and brings them to the alive state once they respond. This monitoring process verifies that a RADIUS server is in a working state before real AAA requests are sent its way. Whenever

a RADIUS server changes to the dead or alive state, a Simple Network Management Protocol (SNMP) trap is generated and the Cisco Nexus 3000 Series switch displays an error message that a failure is taking place.

**Figure 1: RADIUS Server States**



**Note**

The monitoring interval for alive servers and dead servers are different and can be configured by the user. The RADIUS server monitoring is performed by sending a test authentication request to the RADIUS server.

## Vendor-Specific Attributes

The Internet Engineering Task Force (IETF) draft standard specifies a method for communicating vendor-specific attributes (VSAs) between the network access server and the RADIUS server. The IETF uses attribute 26. VSAs allow vendors to support their own extended attributes that are not suitable for general use. The Cisco RADIUS implementation supports one vendor-specific option using the format recommended in the specification. The Cisco vendor ID is 9, and the supported option is vendor type 1, which is named `cisco-av-pair`. The value is a string with the following format:

```
protocol : attribute separator value *
```

The protocol is a Cisco attribute for a particular type of authorization, the separator is an equal sign (=) for mandatory attributes, and an asterisk (\*) indicates optional attributes.

When you use RADIUS servers for authentication on a Cisco Nexus 3000 Series switch, the RADIUS protocol directs the RADIUS server to return user attributes, such as authorization information, along with authentication results. This authorization information is specified through VSAs.

The following VSA protocol options are supported by the Cisco Nexus 3000 Series switch:

- Shell— Used in access-accept packets to provide user profile information.
- Accounting— Used in accounting-request packets. If a value contains any white spaces, you should enclose the value within double quotation marks.

Cisco Nexus 3000 Series switches support the following attributes:

- **roles**—Lists all the roles to which the user belongs. The value field is a string that lists the role names delimited by white space.
- **accountinginfo**—Stores accounting information in addition to the attributes covered by a standard RADIUS accounting protocol. This attribute is sent only in the VSA portion of the Account-Request frames from the RADIUS client on the switch. It can be used only with the accounting protocol data units (PDUs).

## Prerequisites for RADIUS

RADIUS has the following prerequisites:

- Obtain IPv4 addresses or host names for the RADIUS servers.
- Obtain preshared keys from the RADIUS servers.
- Ensure that the Cisco Nexus 3000 Series switch is configured as a RADIUS client of the AAA servers.

## Guidelines and Limitations for RADIUS

RADIUS has the following guidelines and limitations:

- You can configure a maximum of 64 RADIUS servers on the Cisco Nexus 3000 Series switch.

## Configuring RADIUS Servers

To configure RADIUS servers, perform this task:

### SUMMARY STEPS

1. Establish the RADIUS server connections to the Cisco Nexus 3000 Series switch.
2. Configure the preshared secret keys for the RADIUS servers.
3. If needed, configure RADIUS server groups with subsets of the RADIUS servers for AAA authentication methods.
4. If needed, configure any of the following optional parameters:
5. If needed, configure periodic RADIUS server monitoring.

### DETAILED STEPS

- 
- |               |   |
|---------------|---|
| <b>Step 1</b> | Establish the RADIUS server connections to the Cisco Nexus 3000 Series switch.  |
| <b>Step 2</b> | Configure the preshared secret keys for the RADIUS servers.   |
| <b>Step 3</b> | If needed, configure RADIUS server groups with subsets of the RADIUS servers for AAA authentication methods.  |
| <b>Step 4</b> | If needed, configure any of the following optional parameters: <ul style="list-style-type: none"><li>• Dead-time interval.</li><li>• Allow specification of a RADIUS server at login.</li></ul> |

- Transmission retry count and timeout interval.
- Accounting and authentication attributes.

**Step 5** If needed, configure periodic RADIUS server monitoring.

## Configuring RADIUS Server Hosts

You must configure the IPv4 address or the host name for each RADIUS server that you want to use for authentication. All RADIUS server hosts are added to the default RADIUS server group. You can configure up to 64 RADIUS servers.

### SUMMARY STEPS

1. **configure terminal**
2. **radius-server host** *{ipv4-address | host-name}*
3. **exit**
4. (Optional) **show radius-server**
5. (Optional) **copy running-config startup-config**

### DETAILED STEPS

	Command or Action	Purpose
<b>Step 1</b>	<b>configure terminal</b>  <b>Example:</b> switch# configure terminal switch(config) #	Enters global configuration mode.
<b>Step 2</b>	<b>radius-server host</b> <i>{ipv4-address   host-name}</i>  <b>Example:</b> switch(config) # radius-server host 10.10.1.1	Specifies the IPv4 address or hostname for a RADIUS server.
<b>Step 3</b>	<b>exit</b>  <b>Example:</b> switch(config) # exit	Exits configuration mode.
<b>Step 4</b>	<b>show radius-server</b>  <b>Example:</b> switch# show radius-server	(Optional) Displays the RADIUS server configuration.

	Command or Action	Purpose
<b>Step 5</b>	<b>copy running-config startup-config</b>  <b>Example:</b> <pre>switch(config) # copy running-config-startup-config switch(config) #</pre>	(Optional) Saves the change persistently through reboots and restarts by copying the running configuration to the startup configuration.

## Configuring RADIUS Global Preshared Keys

You can configure preshared keys at the global level for all servers used by the Cisco Nexus 3000 Series switch. A preshared key is a shared secret text string between the switch and the RADIUS server hosts.

### Before You Begin

Obtain the preshared key values for the remote RADIUS servers

### SUMMARY STEPS

1. **configure terminal**
2. **radius-server key [0 | 7] key-value**
3. **exit**
4. (Optional) **show radius-server**
5. (Optional) **copy running-config startup-config**

### DETAILED STEPS

	Command or Action	Purpose
<b>Step 1</b>	<b>configure terminal</b>  <b>Example:</b> <pre>switch# configure terminal switch(config) #</pre>	Enters global configuration mode.
<b>Step 2</b>	<b>radius-server key [0   7] key-value</b>  <b>Example:</b> <pre>switch(config)# radius-server key 0 QsEfThUkO</pre>	Specifies a preshared key for all RADIUS servers. You can specify a clear text ( <b>0</b> ) or encrypted ( <b>7</b> ) preshared key. The default format is clear text.  The maximum length is 63 characters.  By default, no preshared key is configured.
<b>Step 3</b>	<b>exit</b>  <b>Example:</b> <pre>switch(config)# exit</pre>	Exits configuration mode.

	Command or Action	Purpose
<b>Step 4</b>	<b>show radius-server</b>  <b>Example:</b> <pre>switch# show radius-server</pre>	(Optional) Displays the RADIUS server configuration.  <b>Note</b> The preshared keys are saved in encrypted form in the running configuration. Use the <b>show running-config</b> command to display the encrypted preshared keys.
<b>Step 5</b>	<b>copy running-config startup-config</b>  <b>Example:</b> <pre>switch(config) # copy running-config-startup-config switch(config) #</pre>	(Optional) Saves the change persistently through reboots and restarts by copying the running configuration to the startup configuration.

## Configuring RADIUS Server Preshared Keys

A preshared key is a shared secret text string between the Cisco Nexus 3000 Series switch and the RADIUS server host.

### Before You Begin

Obtain the preshared key values for the remote RADIUS servers.

### SUMMARY STEPS

1. **configure terminal**
2. **radius-server host** {*ipv4-address* | *host-name*} **key** [0 | 7] *key-value*
3. **exit**
4. (Optional) **show radius-server**
5. (Optional) **copy running-config startup-config**

### DETAILED STEPS

	Command or Action	Purpose
<b>Step 1</b>	<b>configure terminal</b>  <b>Example:</b> <pre>switch# configure terminal switch(config) #</pre>	Enters global configuration mode.
<b>Step 2</b>	<b>radius-server host</b> { <i>ipv4-address</i>   <i>host-name</i> } <b>key</b> [0   7] <i>key-value</i>  <b>Example:</b> <pre>switch(config) # radius-server host 10.10.1.1 key 0 PlIjUhYg</pre>	Specifies a preshared key for a specific RADIUS server. You can specify a clear text ( 0 ) or encrypted ( 7 ) preshared key. The default format is clear text.  The maximum length is 63 characters.  This preshared key is used instead of the global preshared key.

	Command or Action	Purpose
<b>Step 3</b>	<b>exit</b>  <b>Example:</b> switch(config)# exit	Exits configuration mode.
<b>Step 4</b>	<b>show radius-server</b>  <b>Example:</b> switch# show radius-server	(Optional) Displays the RADIUS server configuration.  <b>Note</b> The preshared keys are saved in encrypted form in the running configuration. Use the <b>show running-config</b> command to display the encrypted preshared keys.
<b>Step 5</b>	<b>copy running-config startup-config</b>  <b>Example:</b> switch(config) # copy running-config-startup-config switch(config) #	(Optional) Saves the change persistently through reboots and restarts by copying the running configuration to the startup configuration.

## Configuring RADIUS Server Groups

You can specify one or more remote AAA servers for authentication using server groups. All members of a group must belong to the RADIUS protocol. The servers are tried in the same order in which you configure them.

You can configure these server groups at any time but they only take effect when you apply them to an AAA service.

### SUMMARY STEPS

1. **configure terminal**
2. **aaa group server radius** *group-name*
3. **server** {*ipv4-address* | *server-name*}
4. (Optional) **deadtime** *minutes*
5. (Optional) switch(config-radius)# **source-interface** *interface*
6. **exit**
7. (Optional) **show radius-server group** [*group-name*]
8. (Optional) **copy running-config startup-config**



## DETAILED STEPS

	Command or Action	Purpose
Step 1	<b>configure terminal</b>  <b>Example:</b> switch# configure terminal switch(config) #	Enters global configuration mode.
Step 2	<b>aaa group server radius <i>group-name</i></b>  <b>Example:</b> switch(config)# aaa group server radius RadServer	Creates a RADIUS server group and enters the RADIUS server group configuration submode for that group.  The <i>group-name</i> argument is a case-sensitive alphanumeric string with a maximum length of 127 characters.
Step 3	<b>server {<i>ipv4-address</i>   <i>server-name</i>}</b>  <b>Example:</b> switch(config-radius) # 10.10.1.1	Configures the RADIUS server as a member of the RADIUS server group.  If the specified RADIUS server is not found, configure it using the <b>radius-server host</b> command and retry this command.
Step 4	<b>deadtime <i>minutes</i></b>  <b>Example:</b> switch(config-radius) # deadtime 30	(Optional) Configures the monitoring dead time. The default is 0 minutes. The range is from 1 through 1440.  <b>Note</b> If the dead-time interval for a RADIUS server group is greater than zero (0), that value takes precedence over the global dead-time value. See the example that shows how to configure periodic RADIUS server monitoring.
Step 5	switch(config-radius)# <b>source-interface <i>interface</i></b>  <b>Example:</b> switch(config-radius) # source-interface mgmt 0	(Optional) Assigns a source interface for a specific RADIUS server group.  The supported interface types are management and VLAN.  <b>Note</b> Use the <b>source-interface</b> command to override the global source interface assigned by the <b>ip radius source-interface</b> command.
Step 6	<b>exit</b>  <b>Example:</b> switch(config-radius) # exit	Exits configuration mode.
Step 7	<b>show radius-server group [<i>group-name</i>]</b>  <b>Example:</b> switch(config) # show radius-server group	(Optional) Displays the RADIUS server group configuration.
Step 8	<b>copy running-config startup-config</b>  <b>Example:</b> switch(config) # copy running-config-startup-config switch(config) #	(Optional) Saves the change persistently through reboots and restarts by copying the running configuration to the startup configuration.

**What to Do Next**

Apply them to an AAA service

**Configuring the Global Source Interface for RADIUS Server Groups**

You can configure a global source interface for RADIUS server groups to use when accessing RADIUS servers. You can also configure a different source interface for a specific RADIUS server group. Refer to the Related Commands for additional information.

**SUMMARY STEPS**

1. **configure terminal**
2. **ip radius source-interface *interface***
3. **exit**
4. (Optional) **show radius-server**
5. (Optional) **copy running-config startup config**

**DETAILED STEPS**

	<b>Command or Action</b>	<b>Purpose</b>
<b>Step 1</b>	<b>configure terminal</b>  <b>Example:</b> switch# configure terminal switch(config)	Enters global configuration mode.
<b>Step 2</b>	<b>ip radius source-interface <i>interface</i></b>  <b>Example:</b> switch(config)# ip radius source-interface mgmt 0	Configures the global source interface for all RADIUS server groups configured on the device. The source interface can be the management or the VLAN interface.
<b>Step 3</b>	<b>exit</b>  <b>Example:</b> switch(config)# exit switch#	Exits configuration mode.
<b>Step 4</b>	<b>show radius-server</b>  <b>Example:</b> switch# show radius-server	(Optional) Displays the RADIUS server configuration information.
<b>Step 5</b>	<b>copy running-config startup config</b>  <b>Example:</b> switch# copy running-config startup-config	(Optional) Copies the running configuration to the startup configuration.

**Related Commands**

Command	Description
<b>aaa group server radius group-name</b>	Creates a RADIUS server group and enters the RADIUS server group configuration submode for that group. The group-name argument is a case-sensitive alphanumeric string with a maximum length of 127 characters.

## Allowing Users to Specify a RADIUS Server at Login

To allow users to specify a RADIUS server at login, perform this task:

### SUMMARY STEPS

1. switch# **configure terminal**
2. switch(config)# **radius-server directed-request**
3. switch(config)# **exit**
4. (Optional) switch# **show radius-server directed-request**
5. (Optional) switch# **copy running-config startup-config**

### DETAILED STEPS

	Command or Action	Purpose
<b>Step 1</b>	switch# <b>configure terminal</b>	Enters configuration mode.
<b>Step 2</b>	switch(config)# <b>radius-server directed-request</b>	Allows users to specify a RADIUS server to send the authentication request when logging in. The default is disabled.
<b>Step 3</b>	switch(config)# <b>exit</b>	Exits configuration mode.
<b>Step 4</b>	switch# <b>show radius-server directed-request</b>	(Optional) Displays the directed request configuration.
<b>Step 5</b>	switch# <b>copy running-config startup-config</b>	(Optional) Copies the running configuration to the startup configuration.

## Configuring the Global RADIUS Transmission Retry Count and Timeout Interval

You can configure a global retransmission retry count and timeout interval for all RADIUS servers. By default, a switch retries transmission to a RADIUS server only once before reverting to local authentication. You can increase this number up to a maximum of five retries per server. The timeout interval determines how long the Cisco Nexus 3000 Series switch waits for responses from RADIUS servers before declaring a timeout failure.

To configure the global RADIUS transmission retry count and timeout interval, perform this task:

## SUMMARY STEPS

1. **switch# configure terminal**
2. **switch(config)# radius-server retransmit *count***
3. **switch(config)# radius-server timeout *seconds***
4. **switch(config)# exit**
5. (Optional) **switch# show radius-server**
6. (Optional) **switch# copy running-config startup-config**

## DETAILED STEPS

	Command or Action	Purpose
<b>Step 1</b>	<b>switch# configure terminal</b>	Enters configuration mode.
<b>Step 2</b>	<b>switch(config)# radius-server retransmit <i>count</i></b>	Specifies the retransmission count for all RADIUS servers. The default retransmission count is 1 and the range is from 0 to 5.
<b>Step 3</b>	<b>switch(config)# radius-server timeout <i>seconds</i></b>	Specifies the transmission timeout interval for RADIUS servers. The default timeout interval is 5 seconds and the range is from 1 to 60 seconds.
<b>Step 4</b>	<b>switch(config)# exit</b>	Exits configuration mode.
<b>Step 5</b>	<b>switch# show radius-server</b>	(Optional) Displays the RADIUS server configuration.
<b>Step 6</b>	<b>switch# copy running-config startup-config</b>	(Optional) Copies the running configuration to the startup configuration.

## Configuring the RADIUS Transmission Retry Count and Timeout Interval for a Server

By default, a Cisco Nexus 3000 Series switch retries transmission to a RADIUS server only once before reverting to local authentication. You can increase this number up to a maximum of five retries per server. You can also set a timeout interval that the switch waits for responses from RADIUS servers before declaring a timeout failure.

## SUMMARY STEPS

1. **configure terminal**
2. **radius-server host {*ipv4-address* | *host-name*} retransmit *count***
3. **radius-server host {*ipv4-address* | *host-name*} timeout *seconds***
4. **exit**
5. (Optional) **switch# show radius-server**
6. (Optional) **copy running-config startup-config**

## DETAILED STEPS

	Command or Action	Purpose
Step 1	<b>configure terminal</b>  <b>Example:</b> <pre>switch# configure terminal switch(config) #</pre>	Enters global configuration mode.
Step 2	<b>radius-server host</b> { <i>ipv4-address</i>   <i>host-name</i> } <b>retransmit</b> <i>count</i>  <b>Example:</b> <pre>#switch(config)# radius-server host server1 retransmit 3</pre>	Specifies the retransmission count for a specific server. The default is the global value.  <b>Note</b> The retransmission count value specified for a RADIUS server overrides the count specified for all RADIUS servers.
Step 3	<b>radius-server host</b> { <i>ipv4-address</i>   <i>host-name</i> } <b>timeout</b> <i>seconds</i>  <b>Example:</b> <pre>switch(config) # radius-server host server1 timeout 10</pre>	Specifies the transmission timeout interval for a specific server. The default is the global value.  <b>Note</b> The timeout interval value specified for a RADIUS server overrides the interval value specified for all RADIUS servers.
Step 4	<b>exit</b>  <b>Example:</b> <pre>switch(config) # exit</pre>	Exits configuration mode.
Step 5	<b>switch# show radius-server</b>  <b>Example:</b> <pre>switch# show radius-server</pre>	(Optional) Displays the RADIUS server configuration.
Step 6	<b>copy running-config startup-config</b>  <b>Example:</b> <pre>switch(config) # copy running-config-startup-config switch(config) #</pre>	(Optional) Saves the change persistently through reboots and restarts by copying the running configuration to the startup configuration.

## Configuring Accounting and Authentication Attributes for RADIUS Servers

You can specify that a RADIUS server is to be used only for accounting purposes or only for authentication purposes. By default, RADIUS servers are used for both accounting and authentication. You can also specify the destination UDP port numbers where RADIUS accounting and authentication messages should be sent.

## SUMMARY STEPS

1. **configure terminal**
2. (Optional) **radius-server host** {*ipv4-address* | *host-name*} **acct-port** *udp-port*
3. (Optional) **radius-server host** {*ipv4-address* | *host-name*} **accounting**
4. (Optional) **radius-server host** {*ipv4-address* | *host-name*} **auth-port** *udp-port*
5. (Optional) **radius-server host** {*ipv4-address* | *host-name*} **authentication**
6. **exit**
7. (Optional) **show radius-server**
8. (Optional) **copy running-config startup-config**

## DETAILED STEPS

	Command or Action	Purpose
<b>Step 1</b>	<b>configure terminal</b>  <b>Example:</b> switch# configure terminal switch(config) #	Enters global configuration mode.
<b>Step 2</b>	<b>radius-server host</b> { <i>ipv4-address</i>   <i>host-name</i> } <b>acct-port</b> <i>udp-port</i>  <b>Example:</b> switch(config)# radius-server host 10.10.1.1 acct-port 2004	(Optional) Specifies a UDP port to use for RADIUS accounting messages. The default UDP port is 1812.  The range is from 0 to 65535.
<b>Step 3</b>	<b>radius-server host</b> { <i>ipv4-address</i>   <i>host-name</i> } <b>accounting</b>  <b>Example:</b> switch(config)# radius-server host 10.10.1.1 accounting	(Optional) Specifies that the specified RADIUS server it to be used only for accounting purposes. The default is both accounting and authentication.
<b>Step 4</b>	<b>radius-server host</b> { <i>ipv4-address</i>   <i>host-name</i> } <b>auth-port</b> <i>udp-port</i>  <b>Example:</b> switch(config)# radius-server host 10.10.2.2 auth-port 2005	(Optional) Specifies a UDP port to use for RADIUS authentication messages. The default UDP port is 1812.  The range is from 0 to 65535.
<b>Step 5</b>	<b>radius-server host</b> { <i>ipv4-address</i>   <i>host-name</i> } <b>authentication</b>  <b>Example:</b> switch(config)# radius-server host 10.10.2.2 authentication	(Optional) Specifies that the specified RADIUS server only be used for authentication purposes. The default is both accounting and authentication.

	Command or Action	Purpose
Step 6	<b>exit</b>  <b>Example:</b> switch(config)# <b>exit</b>	Exits configuration mode.
Step 7	<b>show radius-server</b>  <b>Example:</b> switch# <b>show radius-server</b>	(Optional) Displays the RADIUS server configuration.
Step 8	<b>copy running-config startup-config</b>  <b>Example:</b> switch(config) # <b>copy</b> <b>running-config-startup-config</b> switch(config) #	(Optional) Saves the change persistently through reboots and restarts by copying the running configuration to the startup configuration.

## Configuring Periodic RADIUS Server Monitoring

You can monitor the availability of RADIUS servers. These parameters include the username and password to use for the server and an idle timer. The idle timer specifies the interval during which a RADIUS server receives no requests before the switch sends out a test packet. You can configure this option to test servers periodically.



**Note** For security reasons, we recommend that you do not configure a test username that is the same as an existing user in the RADIUS database.

The test idle timer specifies the interval during which a RADIUS server receives no requests before the switch sends out a test packet.

The default idle timer value is 0 minutes. When the idle time interval is 0 minutes, the switch does not perform periodic RADIUS server monitoring.

### SUMMARY STEPS

1. **configure terminal**
2. **radius-server host** {*ipv4-address* | *host-name*} **test** {*idle-time minutes* | **password** *password* [*idle-time minutes*] | **username** *name* [**password** *password* [*idle-time minutes*]]}
3. **radius-server deadtime** *minutes*
4. **exit**
5. (Optional) **show radius-server**
6. (Optional) **copy running-config startup-config**

## DETAILED STEPS

	Command or Action	Purpose
Step 1	<b>configure terminal</b>  <b>Example:</b> <pre>switch# configure terminal switch(config) #</pre>	Enters global configuration mode.
Step 2	<b>radius-server host</b> { <i>ipv4-address</i>   <i>host-name</i> } <b>test</b> { <b>idle-time</b> <i>minutes</i>   <b>password</b> <i>password</i> [ <b>idle-time</b> <i>minutes</i> ]   <b>username</b> <i>name</i> [ <b>password</b> <i>password</i> [ <b>idle-time</b> <i>minutes</i> ]]}  <b>Example:</b> <pre>switch(config) # radius-server host 10.10.1.1 test username user1 password Ur2Gd2BH idle-time 3</pre>	<p>Specifies parameters for server monitoring. The default username is test and the default password is test.</p> <p>The default value for the idle timer is 0 minutes.</p> <p>The valid range is 0 to 1440 minutes.</p> <p><b>Note</b> For periodic RADIUS server monitoring, you must set the idle timer to a value greater than 0.</p>
Step 3	<b>radius-server deadtime</b> <i>minutes</i>  <b>Example:</b> <pre>switch(config) # radius-server deadtime 5</pre>	<p>Specifies the number of minutes before the switch checks a RADIUS server that was previously unresponsive.</p> <p>The default value is 0 minutes.</p> <p>The valid range is 1 to 1440 minutes.</p>
Step 4	<b>exit</b>  <b>Example:</b> <pre>switch(config) # exit</pre>	Exits configuration mode.
Step 5	<b>show radius-server</b>  <b>Example:</b> <pre>switch# show radius-server</pre>	<p>(Optional)</p> <p>Displays the RADIUS server configuration.</p>
Step 6	<b>copy running-config startup-config</b>  <b>Example:</b> <pre>switch(config) # copy running-config-startup-config switch(config) #</pre>	<p>(Optional)</p> <p>Saves the change persistently through reboots and restarts by copying the running configuration to the startup configuration.</p>

## Configuring the Dead-Time Interval

You can configure the dead-time interval for all RADIUS servers. The dead-time interval specifies the time that the Cisco Nexus 3000 Series switch waits after declaring a RADIUS server is dead, before sending out a test packet to determine if the server is now alive. The default value is 0 minutes.



**Note**

When the dead-time interval is 0 minutes, RADIUS servers are not marked as dead even if they are not responding. You can configure the dead-time interval for a RADIUS server group.

To configure dead time interval, perform this task:

**SUMMARY STEPS**

1. switch# **configure terminal**
2. #switch(config)# **radius-server deadtime**
3. switch(config)# **exit**
4. (Optional) switch# **show radius-server**
5. (Optional) switch# **copy running-config startup-config**

**DETAILED STEPS**

	Command or Action	Purpose
<b>Step 1</b>	switch# <b>configure terminal</b>	Enters configuration mode.
<b>Step 2</b>	#switch(config)# <b>radius-server deadtime</b>	Configures the dead-time interval. The default value is 0 minutes. The range is from 1 to 1440 minutes.
<b>Step 3</b>	switch(config)# <b>exit</b>	Exits configuration mode.
<b>Step 4</b>	switch# <b>show radius-server</b>	(Optional) Displays the RADIUS server configuration.
<b>Step 5</b>	switch# <b>copy running-config startup-config</b>	(Optional) Copies the running configuration to the startup configuration.

**Manually Monitoring RADIUS Servers or Groups****SUMMARY STEPS**

1. **test aaa server radius** *{ipv4-address | server-name} [vrf vrf-name] username password*
2. **test aaa group** *group-name username password*

## DETAILED STEPS

	Command or Action	Purpose
<b>Step 1</b>	<b>test aaa server radius</b> { <i>ipv4-address</i>   <i>server-name</i> } [ <b>vrf</b> <i>vrf-name</i> ] <i>username password</i>  <b>Example:</b> switch# <b>test aaa server radius</b> 10.10.1.1 user1 Ur2Gd2BH	Sends a test message to a RADIUS server to confirm availability.
<b>Step 2</b>	<b>test aaa group</b> <i>group-name username password</i>  <b>Example:</b> switch# <b>test aaa group</b> RadGroup user2 As3He3CI	Sends a test message to a RADIUS server group to confirm availability.

## Verifying RADIUS Configuration

To display RADIUS configuration information, perform one of the following tasks:

## SUMMARY STEPS

1. **show running-config radius** [**all**]
2. **show startup-config radius**
3. **show radius-server** [*server-name* | *ipv4-address*] [**directed-request** | **groups** | **sorted** | **statistics**]

## DETAILED STEPS

	Command or Action	Purpose
<b>Step 1</b>	<b>show running-config radius</b> [ <b>all</b> ]  <b>Example:</b> switch# <b>show running-config radius</b>	Displays the RADIUS configuration in the running configuration.
<b>Step 2</b>	<b>show startup-config radius</b>  <b>Example:</b> switch# <b>show startup-config radius</b>	Displays the RADIUS configuration in the startup configuration.
<b>Step 3</b>	<b>show radius-server</b> [ <i>server-name</i>   <i>ipv4-address</i> ] [ <b>directed-request</b>   <b>groups</b>   <b>sorted</b>   <b>statistics</b> ]  <b>Example:</b> switch# <b>show radius-server</b> radServer1	Displays all configured RADIUS server parameters.

## Displaying RADIUS Server Statistics

### SUMMARY STEPS

1. `show radius-server statistics {hostname | ipv4-address}`

### DETAILED STEPS

	Command or Action	Purpose
Step 1	<code>show radius-server statistics {hostname   ipv4-address}</code>  <b>Example:</b> <code>switch# show radius-server statistics 10.10.1.1</code>	Displays the RADIUS statistics.

## Example RADIUS Configuration

The following example shows how to configure RADIUS:

```
switch# configure terminal
switch(config)# radius-server key 7 "ToIkLhPpG"
switch(config)# radius-server host 10.10.1.1 key 7 "ShMoMhTl" authentication accounting
switch(config)# aaa group server radius RadServer
switch(config-radius)# server 10.10.1.1
switch(config-radius)# exit
switch(config-radius)# use-vrf management
```

## Default RADIUS Settings

The following table lists the default settings for RADIUS parameters.

**Table 1: Default RADIUS Parameters**

Parameters	Default
Server roles	Authentication and accounting
Dead timer interval	0 minutes
Retransmission count	1
Retransmission timer interval	5 seconds
Idle timer interval	0 minutes
Periodic server monitoring username	test

Parameters	Default
Periodic server monitoring password	test