



Dashboard-Cisco Nexus 1000V

This chapter contains the following sections:

- [Information About the Dashboard–Cisco Nexus 1000V, page 1](#)
- [Using the Dashboard-Cisco Nexus 1000V, page 2](#)
- [Feature History For Dashboard–Cisco Nexus 1000V, page 3](#)

Information About the Dashboard–Cisco Nexus 1000V

The dashboard in Cisco Virtual Switch Update Manager displays the health of the Cisco Nexus 1000V switch and the hosts and the virtual machines that it manages in your datacenter. The dashboard enables you to detect errors and warnings and fix any potential issues in your datacenter.

Cisco Virtual Switch Update Manager supports the dashboard functionality from Release 4.2(1)SV2(1.1a) and later releases..

In the Dashboard–Cisco Nexus 1000V, the following conditions are classified as warnings:

- When the Cisco Nexus 1000V switch reaches 90 percent of its Virtual Ethernet module (VEM) limit.
- When the Cisco Nexus 1000V switch reaches 90 percent of its VNIC limit.
- When the secondary Virtual Supervisor module (VSM) is not operational.
- If the number of Cisco Nexus 1000V licenses available is less than 5.
- When 90 percent of the VNIC limit is used in the host.
- If the license is going to expire in 10 days.

In the Dashboard–Cisco Nexus 1000V, the following conditions are classified as errors:

- When the Cisco Nexus 1000V reaches its VEM limit.
- When the Cisco Nexus 1000V reaches its module limit.
- If the switch is not managed by Cisco Virtual Switch Update Manager
- If the version of the switch is not supported.
- If the switch is not connected to vCenter Server.

- If the switch is not reachable.
- If the number of licenses is available is zero.
- If the licenses have expired.
- If the host is not connected as a module to the VSM.
- If the VNIC limit is used on the host.
- If one or more uplinks are not connected on the host.
- If the VM kernel NICs are not connected on the host.
- If the VNICs are not connected on the host.

Using the Dashboard-Cisco Nexus 1000V

The **Dashboard–Cisco Nexus 1000V** pane enables you to view the inventory of the components in your datacenter which are managed by the Cisco Virtual Switch Update Manager, the status of your datacenter, and a detailed summary of the errors and warnings associated with the components in your datacenter.

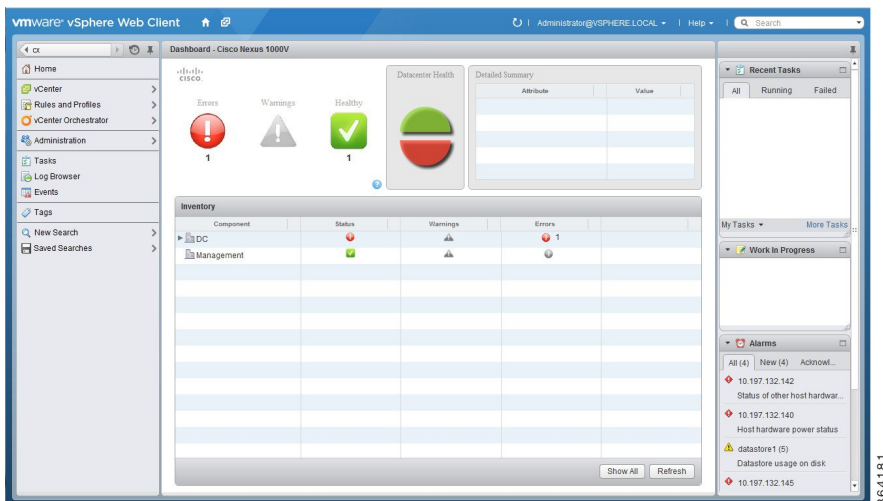
Before You Begin

- You have already installed the Cisco Virtual Switch Update Manager.
- The Cisco Nexus 1000V switch is managed by Cisco Virtual Switch Update Manager.

Step 1 Log in to the VMware vSphere Web Client .

Step 2 Choose **Home > Cisco Virtual Switch Update Manager > Dashboard – Cisco Nexus 1000V**. The Dashboard - Cisco Nexus 1000V pane appears.

Figure 1: Dashboard–Cisco Nexus 1000V



Step 3 From the **Component** column, in the **Inventory** table, choose the data center.
You can view the following status of your datacenter in the **Status** column:

- A green icon indicates that the datacenter is healthy.
- A yellow icon indicates that there are errors associated with the components in the datacenter.
- A red icon indicates that there are warnings associated with the components in the datacenter.

See [Information About the Dashboard–Cisco Nexus 1000V, on page 1](#) for information about the conditions that are classified as errors or warnings.

Step 4 From the **Component** drop-down list, choose the component in your datacenter.
In the **Detailed Summary** window, you can view the summary of the component such as the component type, component state, errors, or warnings that are associated with the component.

Step 5 Click **Refresh** to refresh the data.

Feature History For Dashboard–Cisco Nexus 1000V

This table includes only the updates for those releases that have resulted in additions or changes to the feature.

Feature Name	Releases	Feature Information
Dashboard–Cisco Nexus 1000V	Release 1.0	This feature was introduced.

