



CHAPTER 11

Configuring NetFlow

Use this chapter to configure NetFlow to characterize IP traffic based on its source, destination, timing, and application information, to assess network availability and performance.

This chapter includes the following sections:

- [Information About NetFlow, page 11-1](#)
- [Prerequisites for NetFlow, page 11-8](#)
- [Configuration Guidelines and Limitations, page 11-9](#)
- [Default Settings, page 11-9](#)
- [Enabling the NetFlow Feature, page 11-10](#)
- [Configuring NetFlow, page 11-11](#)
- [Verifying the NetFlow Configuration, page 11-21](#)
- [Configuration Example for NetFlow, page 11-25](#)
- [Additional References, page 11-26](#)
- [Feature History for NetFlow, page 11-27](#)

Information About NetFlow

NetFlow lets you evaluate IP traffic and understand how and where it flows. NetFlow gathers data that can be used in accounting, network monitoring, and network planning.

This section includes the following topics:

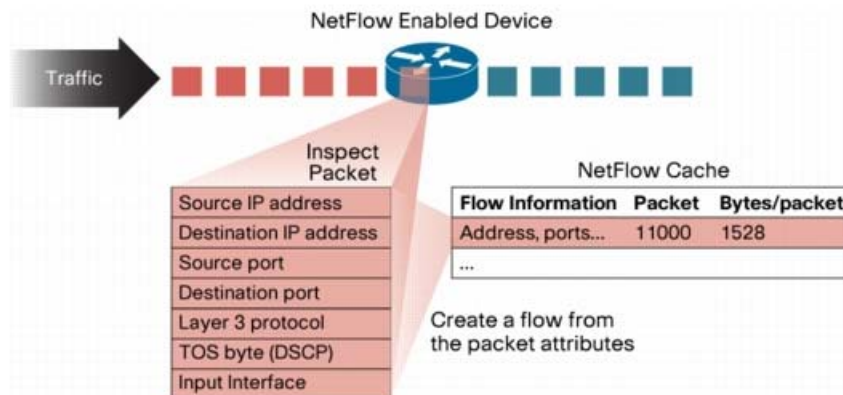
- [What is a Flow, page 11-2](#)
- [Flow Record Definition, page 11-2](#)
- [Accessing NetFlow Data, page 11-5](#)
- [Exporting Flows to the NetFlow Collector Server, page 11-7](#)
- [What NetFlow Data Looks Like, page 11-8](#)
- [High Availability, page 11-8](#)

Send document comments to nexus1k-docfeedback@cisco.com.

What is a Flow

A flow is a one-directional stream of packets that arrives on a source interface (or subinterface), matching a set of criteria. All packets with the same source/destination IP address, source/destination ports, protocol interface and class of service are grouped into a flow and then packets and bytes are tallied. This condenses a large amount of network information into a database called the NetFlow cache.

Figure 11-1 Creating a Flow in the NetFlow Cache



You create a flow by defining the criteria it gathers. Flows are stored in the NetFlow cache.

Flow information tells you the following:

- Source address tells you who is originating the traffic.
- Destination address tells who is receiving the traffic.
- Ports characterize the application using the traffic.
- Class of service examines the priority of the traffic.
- The device interface tells how traffic is being used by the network device.
- Tallied packets and bytes show the amount of traffic.

Flow Record Definition

A flow record defines the information that NetFlow gathers, such as packets in the flow and the types of counters gathered per flow. You can define new flow records or use the pre-defined Cisco Nexus 1000V flow record.

To create a record, see the [“Defining a Flow Record” procedure on page 11-11](#).

Send document comments to nexus1k-docfeedback@cisco.com.

The following table describes the criteria defined in a flow record.

Flow record criteria	Description
Match	<p>Defines what information is matched for collection in the flow record.</p> <ul style="list-style-type: none"> • ip: Data collected in the flow record matches one of the following IP options: <ul style="list-style-type: none"> – protocol – tos (type of service) • ipv4: Data collected in the flow record matches one of the following ipv4 address options: <ul style="list-style-type: none"> – source address – destination address • transport: Data collected in the flow record matches one of the following transport options: <ul style="list-style-type: none"> – destination port – source port
Collect	<p>Defines how the flow record collects information.</p> <ul style="list-style-type: none"> • counter: Collects Flow Record information in one of the following formats: <ul style="list-style-type: none"> – bytes: collected in 32-bit counters unless the long 64-bit counter is specified. – packets: collected in 32-bit counters unless the long 64-bit counter is specified. • timestamp sys-uptime: Collects the system up time for the first or last packet in the flow. • transport tcp flags: Collects the TCP transport layer flags for the packets in the flow.

Predefined Flow Records

Cisco Nexus 1000V includes the following pre-defined flow records.

- [Example 11-1 Cisco Nexus 1000V Predefined Flow Record: Netflow-Original, page 11-3](#)
- [Example 11-2 Cisco Nexus 1000V Predefined Flow Record: Netflow IPv4 Original-Input, page 11-4](#)
- [Example 11-3 Cisco Nexus 1000V Predefined Flow Record: Netflow IPv4 Original-Output, page 11-4](#)
- [Example 11-4 Cisco Nexus 1000V Predefined Flow Record: Netflow Protocol-Port, page 11-5](#)

Example 11-1 Cisco Nexus 1000V Predefined Flow Record: Netflow-Original

```
n1000v# show flow record netflow-original
Flow record netflow-original:
  Description: Traditional IPv4 input NetFlow with origin ASs
  No. of users: 0
  Template ID: 0
```

Send document comments to nexus1k-docfeedback@cisco.com.

```

Fields:
  match ipv4 source address
  match ipv4 destination address
  match ip protocol
  match ip tos
  match transport source-port
  match transport destination-port
  match interface input
  match interface output
  match flow direction
  collect routing source as
  collect routing destination as
  collect routing next-hop address ipv4
  collect transport tcp flags
  collect counter bytes
  collect counter packets
  collect timestamp sys-uptime first
  collect timestamp sys-uptime last
n1000v#

```



Note

Although the following lines appear in the output of the **show flow record** command, the commands they are based on are not currently supported in Cisco Nexus 1000V. The use of these commands has no affect on the configuration.

```

collect routing source as
collect routing destination as
collect routing next-hop address ipv4

```

Example 11-2 Cisco Nexus 1000V Predefined Flow Record: Netflow IPv4 Original-Input

```

n1000v# show flow record netflow ipv4 original-input
Flow record ipv4 original-input:
  Description: Traditional IPv4 input NetFlow
  No. of users: 0
  Template ID: 0
  Fields:
    match ipv4 source address
    match ipv4 destination address
    match ip protocol
    match ip tos
    match transport source-port
    match transport destination-port
    match interface input
    match interface output
    match flow direction
    collect routing source as
    collect routing destination as
    collect routing next-hop address ipv4
    collect transport tcp flags
    collect counter bytes
    collect counter packets
    collect timestamp sys-uptime first
    collect timestamp sys-uptime last
n1000v#

```

Example 11-3 Cisco Nexus 1000V Predefined Flow Record: Netflow IPv4 Original-Output

```

switch# show flow record netflow ipv4 original-output

```

Send document comments to nexus1k-docfeedback@cisco.com.

```
Flow record ipv4 original-output:
  Description: Traditional IPv4 output NetFlow
  No. of users: 0
  Template ID: 0
  Fields:
    match ipv4 source address
    match ipv4 destination address
    match ip protocol
    match ip tos
    match transport source-port
    match transport destination-port
    match interface input
    match interface output
    match flow direction
    collect routing source as
    collect routing destination as
    collect routing next-hop address ipv4
    collect transport tcp flags
    collect counter bytes
    collect counter packets
    collect timestamp sys-uptime first
    collect timestamp sys-uptime last
switch#
```

Example 11-4 Cisco Nexus 1000V Predefined Flow Record: Netflow Protocol-Port

```
switch# show flow record netflow protocol-port
Flow record ipv4 protocol-port:
  Description: Protocol and Ports aggregation scheme
  No. of users: 0
  Template ID: 0
  Fields:
    match ip protocol
    match transport source-port
    match transport destination-port
    match interface input
    match interface output
    match flow direction
    collect counter bytes
    collect counter packets
    collect timestamp sys-uptime first
    collect timestamp sys-uptime last
switch#
```

Accessing NetFlow Data

There are two primary methods used to access NetFlow data:

- [Command Line Interface \(CLI\), page 11-5](#)
- [NetFlow Collector, page 11-6](#)

Command Line Interface (CLI)

To view what is happening in your network now, use the CLI. To see a list of available show commands, see the [“Verifying the NetFlow Configuration” section on page 11-21](#).

Send document comments to nexus1k-docfeedback@cisco.com.

The CLI uses the following tools to capture and export flow records to the Netflow Collector:

- [Flow Monitor, page 11-6](#)
- [Flow Exporter, page 11-6](#)

Flow Monitor

A flow monitor creates an association between the following NetFlow components:

- a flow record—consisting of matching and collection criteria
- a flow exporter—consisting of the export criteria

This flow monitor association enables a set, consisting of a record and an exporter, to be defined once and re-used many times. Multiple flow monitors can be created for different needs. A flow monitor is applied to a specific interface in a specific direction.

See the “[Defining a Flow Monitor](#)” procedure on page 11-16, and “[Assigning a Flow Monitor to an Interface](#)” procedure on page 11-19.

Flow Exporter

Use the flow exporter to define where and when the flow records are sent from the cache to the reporting server, called the NetFlow Collector.

An exporter definition includes the following.

- Destination IP address
- Source interface
- UDP port number (where the collector is listening)
- Export format

**Note**

NetFlow export packets use the IP address assigned to the source interface. If the source interface does not have an IP address assigned to it, the exporter will be inactive.

See the “[Defining a Flow Exporter](#)” procedure on page 11-14.

Export Formats

**Note**

Cisco Nexus 1000V supports the NetFlow Version 9 export format.

Cisco Nexus 1000V supports UDP as the transport protocol for exporting data to up to two exporters per monitor.

NetFlow Collector

You can export NetFlow from the Cisco Nexus 1000V NetFlow cache to a reporting server called the NetFlow Collector. The NetFlow Collector assembles the exported flows and combines them to produce reports used for traffic and security analysis. NetFlow export, unlike SNMP polling, pushes information periodically to the NetFlow reporting collector. The NetFlow cache is constantly filling with flows.

Send document comments to nexus1k-docfeedback@cisco.com.

Cisco Nexus 1000V searches the cache for flows that have terminated or expired and exports them to the NetFlow collector server. Flows are terminated when the network communication has ended, that is, when a packet contains the TCP FIN flag.

The following steps implement NetFlow data reporting:

- NetFlow records are configured to define the information that NetFlow gathers.
- Netflow monitor is configured to capture flow records to the NetFlow cache.
- NetFlow export is configured to send flows to the collector.
- Cisco Nexus 1000V searches the NetFlow cache for flows that have terminated and exports them to the NetFlow collector server.
- Flows are bundled together based on space availability in the UDP export packet or based on export timer.
- The NetFlow collector software creates real-time or historical reports from the data.

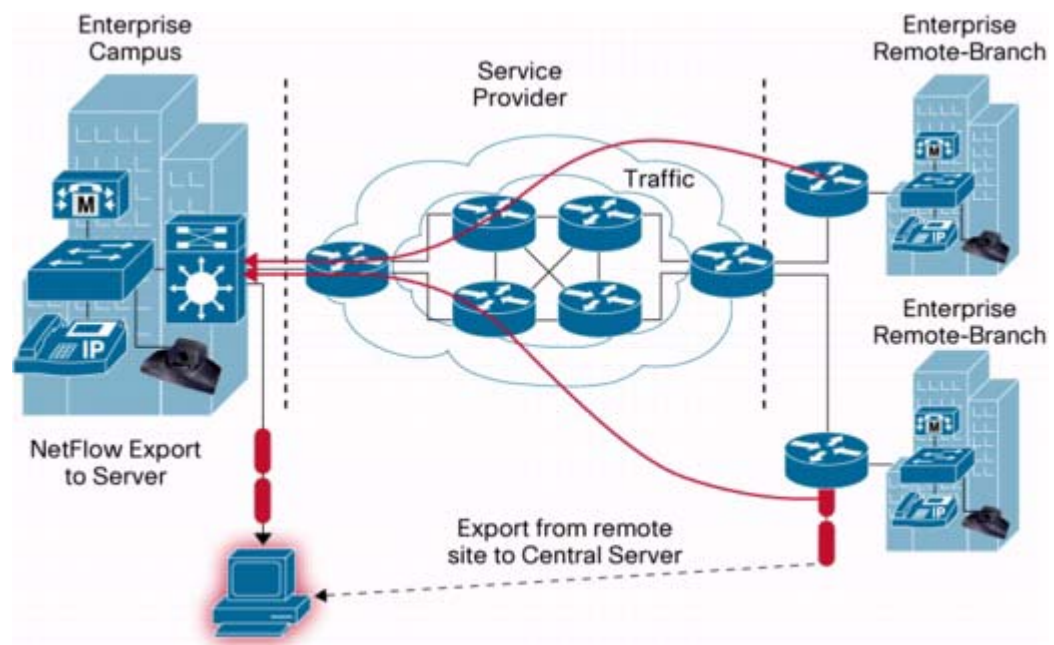
Exporting Flows to the NetFlow Collector Server

Timers determine when a flow is exported to the NetFlow Collector Server.

A flow is ready for export when one of the following occurs:

- The flow is inactive for a certain time during which no new packets are received for the flow.
- The flow has lived longer than the active timer, for example, a long FTP download.
- A TCP flag indicates the flow is terminated. That is, a FIN or RST flag is present.
- The flow cache is full and some flows must be aged out to make room for new flows.

Figure 11-2 *Exporting Flows to the NetFlow Collector Server*

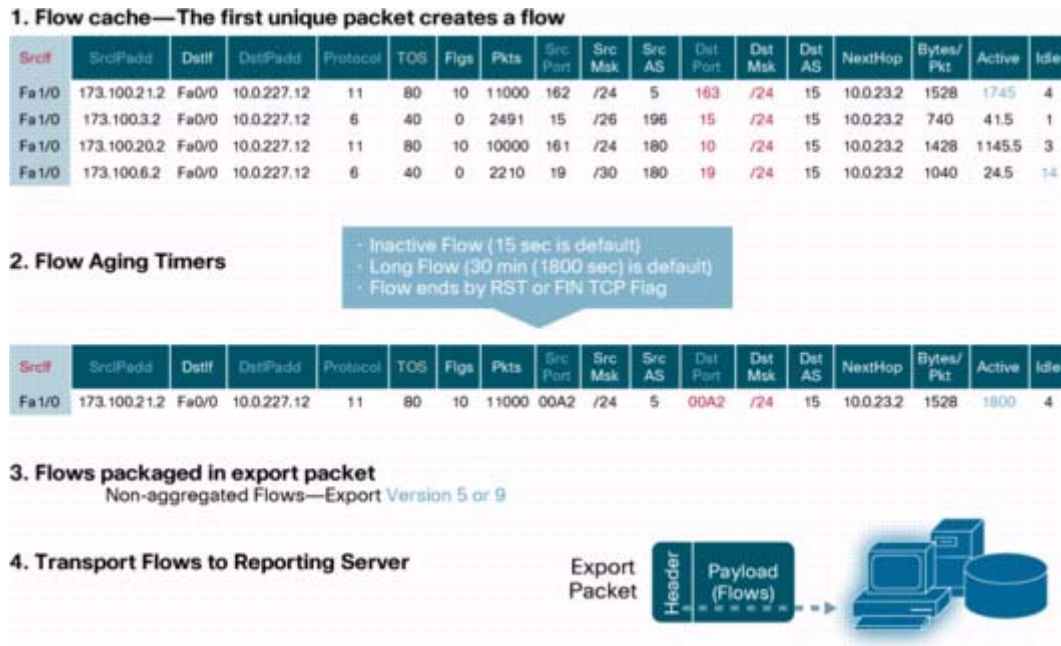


[Send document comments to nexus1k-docfeedback@cisco.com.](mailto:nexus1k-docfeedback@cisco.com)

What NetFlow Data Looks Like

The following figure shows an example of NetFlow data.

Figure 11-3 NetFlow Cache Example



Network Analysis Module

You can also use the Cisco Network Analysis Module (NAM) to monitor NetFlow data sources. NAM enables traffic analysis views and reports such as hosts, applications, conversations, VLAN, and QoS.

To use NAM for monitoring the Cisco Nexus 1000V NetFlow data sources see the *Cisco Nexus 1010 Network Analysis Module Installation and Configuration Note, 4.2*.

High Availability

Cisco Nexus 1000V supports stateful restarts for NetFlow. After a reboot or supervisor switchover, Cisco Nexus 1000V applies the running configuration.

Prerequisites for NetFlow

- You must be aware of resource requirements since NetFlow consumes additional memory and CPU resources.
- Memory and CPU resources are provided by the VEM hosting the flow monitor interface. Resources are limited by the number of CPU cores present on the VEM.

Send document comments to nexus1k-docfeedback@cisco.com.

Configuration Guidelines and Limitations

NetFlow has the following configuration guidelines and limitations:

- If a source interface is not configured, the NetFlow exporter will remain disabled.
- In Cisco Nexus 1000V, Mgmt0 interface is configured by default as the source interface for an exporter. You can change the source interface if needed.
- Cisco Nexus 1000V includes the following predefined flow records that can be used instead of configuring a new one. For more information, see the “[Flow Record Definition](#)” section on page 11-2:

- netflow-original
Cisco Nexus 1000V predefined traditional IPv4 input NetFlow with origin ASs



Note The routing-related fields in this predefined flow record are ignored.

- netflow ipv4 original-input
Cisco Nexus 1000V predefined traditional IPv4 input NetFlow
- netflow ipv4 original-output
Cisco Nexus 1000V predefined traditional IPv4 output NetFlow
- netflow protocol-port
Cisco Nexus 1000V predefined protocol and ports aggregation scheme
- Up to 256 NetFlow interfaces are allowed per DVS.
- Up to 32 NetFlow interfaces are allowed per host
- A maximum of one flow monitor per interface per direction is allowed.
- Up to 8 flow monitors are allowed per VEM.
- Up to 2 flow exporters are permitted per monitor.
- Up to 32 NetFlow Policies are allowed per DVS.
- Up to 8 NetFlow Policies are allowed per host.
- NetFlow is not supported on port channels.

Default Settings

Table 11-1 lists the default settings for NetFlow parameters.

Table 11-1 *Default NetFlow Parameters*

Parameters	Default
NetFlow version	9
source interface	mgmt0
match	direction and interface (incoming/outgoing)
flow monitor active timeout	1800
flow monitor inactive timeout	15

Send document comments to nexus1k-docfeedback@cisco.com.

Table 11-1 Default NetFlow Parameters (continued)

Parameters	Default
flow monitor cache size	4096
flow exporter UDP port transport udp command	9995
DSCP	default/best-effort (0)
VRF	default

Enabling the NetFlow Feature

Use this procedure to enable the NetFlow feature.

BEFORE YOU BEGIN

Before beginning this procedure, you must know or do the following:

- You are logged in to the CLI in EXEC mode.

SUMMARY STEPS

- config t**
- feature netflow**
- show feature**
- copy running-config startup-config**

DETAILED STEPS

	Command	Purpose
Step 1	config t Example: n1000v# config t n1000v(config)#	Enters global configuration mode.
Step 2	feature netflow Example: n1000v(config)# feature netflow n1000v(config)#	Enables the NetFlow feature.
Step 3	show feature Example: n1000v(config)# show feature	(Optional) Displays the available features and whether or not they are enabled.
Step 4	copy running-config startup-config Example: n1000v(config-flow-exporter)# copy running-config startup-config	(Optional) Saves the running configuration persistently through reboots and restarts by copying it to the startup configuration.

Send document comments to nexus1k-docfeedback@cisco.com.

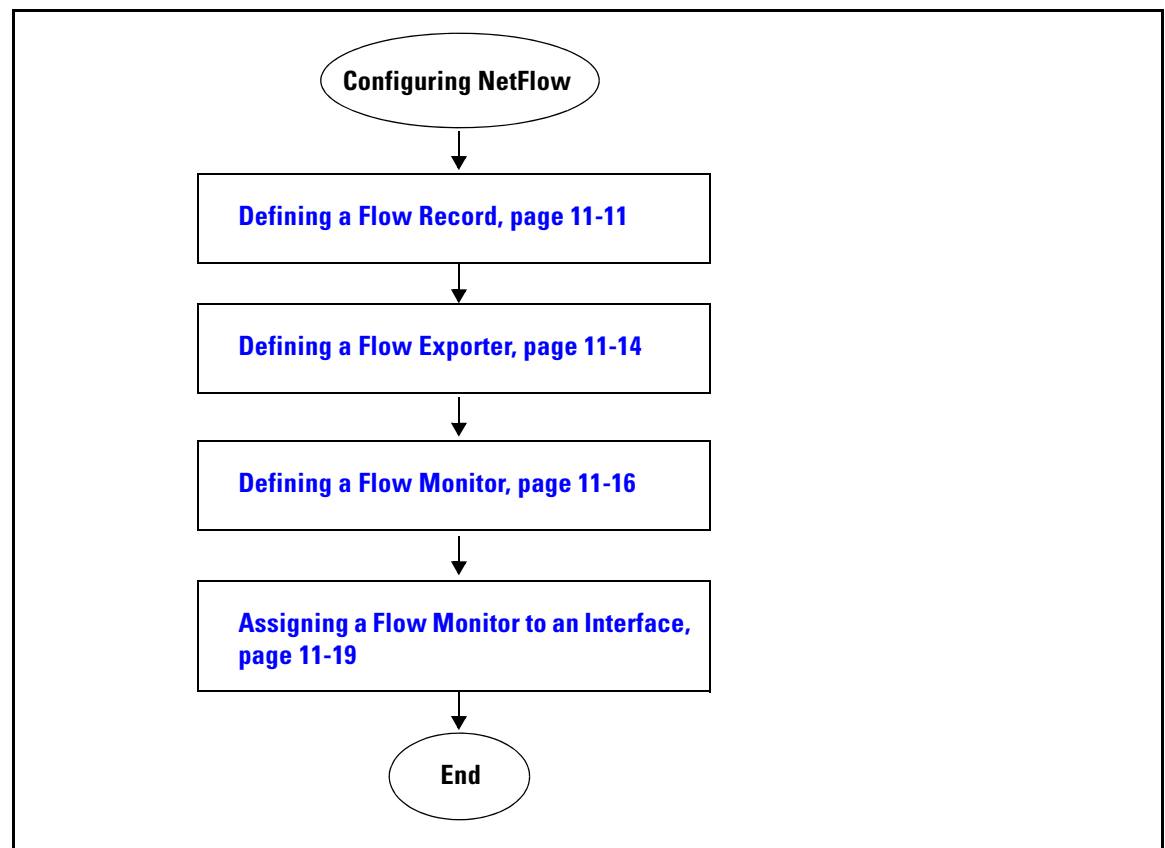
The following is an example for enabling the NetFlow feature:

```
n1000v# config t  
n1000v(config)# feature netflow
```

Configuring NetFlow

The following flow chart is designed to guide you through the netflow configuration process. After completing each procedure, return to the flow chart to make sure you complete all required procedures in the correct sequence.

Flow Chart: Configuring NetFlow



Defining a Flow Record

Use this procedure to create a flow record.



Note

Optionally, you can use the Cisco Nexus 1000V pre-defined record shown in the “[Flow Record Definition](#)” section on page 11-2. See the “[Defining a Flow Monitor](#)” section on page 11-16 to apply a pre-defined record to a flow monitor.

Send document comments to nexus1k-docfeedback@cisco.com.

BEFORE YOU BEGIN

Before beginning this procedure, you must know or do the following:

- You know which of the options you want this flow record to match.
- You know which options you want this flow record to collect.

For more information, see the “[Flow Record Definition](#)” section on page 11-2 .



Note

Although the following lines appear in the output of the **show flow record** command, the commands they are based on are not currently supported in Cisco Nexus 1000V. The use of these commands has no affect on the configuration.

```
collect routing source as
collect routing destination as
collect routing next-hop address ipv4
```

SUMMARY STEPS

1. **config t**
2. **flow record *name***
3. **description *string***
4. **match {ip {protocol | tos} | ipv4 {destination address | source address} | transport {destination-port | source-port}}**
5. **collect {counter {bytes [long] | packets [long]} | timestamp sys-uptime | transport tcp flags}**
6. **show flow record [*name*]**
7. **copy running-config startup-config**

DETAILED STEPS

	Command	Purpose
Step 1	<i>config t</i> Example: n1000v# config t n1000v(config)#	Places you into CLI Global Configuration mode.
Step 2	flow record <i>name</i> Example: n1000v(config)# flow record RecordTest n1000v(config-flow-record)#	Creates a Flow Record by name, and places you in the CLI Flow Record Configuration mode for that specific record.
Step 3	description <i>string</i> Example: n1000v(config-flow-record)# description Ipv4Flow	(Optional) Adds a description of up to 63 characters to this Flow Record and saves it in the running configuration.

Send document comments to nexus1k-docfeedback@cisco.com.

	Command	Purpose
Step 4	<p>match {ip{protocol tos} ipv4{destination address source address} transport {destination-port source-port}}</p> <p>Example: n1000v(config-flow-record)# match ipv4 destination address</p>	<p>Defines the Flow Record to match one of the following and saves it in the running configuration.</p> <ul style="list-style-type: none"> • ip: Matches one of the following IP options: <ul style="list-style-type: none"> – protocol – tos (type of service) • ipv4: Matches one of the following ipv4 address options: <ul style="list-style-type: none"> – source address – destination address • transport: Matches one of the following transport options: <ul style="list-style-type: none"> – destination port – source port
Step 5	<p>collect {counter {bytes [long] packets [long]} timestamp sys-uptime transport tcp flags}</p> <p>Example: n1000v(config-flow-record)# collect counter packets</p>	<p>Specifies a collection option to define the information to collect in the Flow Record and saves it in the running configuration.</p> <ul style="list-style-type: none"> • counter: Collects Flow Record information in one of the following formats: <ul style="list-style-type: none"> – bytes: collected in 32-bit counters unless the long 64-bit counter is specified. – packets: collected in 32-bit counters unless the long 64-bit counter is specified. • timestamp sys-uptime: Collects the system up time for the first or last packet in the flow. • transport tcp flags: Collects the TCP transport layer flags for the packets in the flow.
Step 6	<p>show flow record [name]</p> <p>Example: n1000v(config-flow-exporter)# show flow record RecordTest</p>	<p>(Optional) Displays information about Flow Records.</p>
Step 7	<p>copy running-config startup-config</p> <p>Example: n1000v(config-flow-exporter)# copy running-config startup-config</p>	<p>(Optional) Saves the running configuration persistently through reboots and restarts by copying it to the startup configuration.</p>

The following is an example for creating a flow record:

```
n1000v# config t
n1000v(config)# flow record RecordTest
n1000v(config-flow-record)# description Ipv4flow
n1000v(config-flow-record)# match ipv4 destination address
n1000v(config-flow-record)# collect counter packets
n1000v(config-flow-record)# show flow record RecordTest
Flow record RecordTest:
  Description: Ipv4flow
  No. of users: 0
```

Send document comments to nexus1k-docfeedback@cisco.com.

```

Template ID: 0
Fields:
    match ipv4 destination address
    match interface input
    match interface output
    match flow direction
    collect counter packets
n1000v(config-flow-record)#

```

Defining a Flow Exporter

Use this procedure to create a Flow Exporter defining where and how Flow Records are exported to the NetFlow Collector Server.

BEFORE YOU BEGIN

Before beginning this procedure, you must know or do the following:

- A maximum of two flow exporters per monitor are permitted.
- You know destination IP address of the NetFlow Collector Server.
- You know the source interface that Flow Records are sent from.
- You know the transport UDP that the Collector is listening on.
- Export format version 9 is the version supported.

SUMMARY STEPS

1. **config t**
2. **flow exporter** *name*
3. **description** *string*
4. **destination** {*ipv4-address* | *ipv6-address*}
5. **dscp** *value*
6. **source mgmt** *interface_number*
7. **transport udp** *port-number*
8. **version** 9
9. **option** {**exporter-stats** | **interface-table**} **timeout** *seconds*
10. **template data** **timeout** *seconds*
11. **show flow exporter** [*name*]
12. **copy running-config startup-config**

Send document comments to nexus1k-docfeedback@cisco.com.

DETAILED STEPS

	Command	Purpose
Step 1	config t Example: n1000v# config t n1000v(config)#	Places you in CLI Global Configuration mode.
Step 2	flow exporter name Example: n1000v(config)# flow exporter ExportTest n1000v(config-flow-exporter)#	Creates a Flow Exporter, saves it in the running configuration, and then places you in CLI Flow Exporter Configuration mode.
Step 3	description string Example: n1000v(config-flow-exporter)# description ExportV9	Adds a description of up to 63 characters to this Flow Exporter and saves it in the running configuration.
Step 4	destination {ipv4-address ipv6-address} Example: n1000v(config-flow-exporter)# destination 192.0.2.1	Specifies the IP address of the destination interface for this Flow Exporter and saves it in the running configuration.
Step 5	dscp value Example: n1000v(config-flow-exporter)# dscp 0	Specifies the differentiated services codepoint value for this Flow Exporter, between 0 and 63, and saves it in the running configuration.
Step 6	source mgmt interface_number Example: n1000v(config-flow-exporter)# source mgmt 0	Specifies the interface and its number, from which the Flow Records are sent to the NetFlow Collector Server, and saves it in the running configuration.
Step 7	transport udp port-number Example: n1000v(config-flow-exporter)# transport udp 200	Specifies the destination UDP port, between 0 and 65535, used to reach the NetFlow collector, and saves it in the running configuration.
Step 8	version {9} Example: n1000v(config-flow-exporter)# version 9 n1000v(config-flow-exporter-version-9)#	Specifies NetFlow export version 9, saves it in the running configuration, and places you into the export version 9 configuration mode.
Step 9	option {exporter-stats interface-table sampler-table} timeout value Example: n1000v(config-flow-exporter-version-9)# option exporter-stats timeout 1200	Specifies one of the following version 9 exporter resend timers and its value, between 1 and 86400 seconds, and saves it in the running configuration. <ul style="list-style-type: none"> • exporter-stats • interface-table • sampler-table
Step 10	template data timeout seconds Example: n1000v(config-flow-exporter-version-9)# template data timeout 1200	Sets the template data resend timer and its value, between 1 and 86400 seconds, and saves it in the running configuration.

Send document comments to nexus1k-docfeedback@cisco.com.

	Command	Purpose
Step 11	show flow exporter [name] Example: n1000v(config-flow-exporter)# show flow exporter	(Optional) Displays information about the Flow Exporter.
Step 12	copy running-config startup-config Example: n1000v(config-flow-exporter)# copy running-config startup-config	(Optional) Saves the running configuration persistently through reboots and restarts by copying it to the startup configuration.

The following is an example of creating a flow exporter:

```
n1000v(config)# flow exporter ExportTest
n1000v(config-flow-exporter)# description ExportHamilton
n1000v(config-flow-exporter)# destination 192.0.2.1
n1000v(config-flow-exporter)# dscp 2
n1000v(config-flow-exporter)# source mgmt 0
n1000v(config-flow-exporter)# transport udp 200
n1000v(config-flow-exporter)# version 9
n1000v(config-flow-exporter-version-9)# option exporter-stats timeout 1200
n1000v(config-flow-exporter-version-9)# template data timeout 1200
n1000v(config-flow-exporter-version-9)# show flow exporter ExportTest
Flow exporter ExportTest:
  Description: ExportHamilton
  Destination: 192.0.2.1
  VRF: default (1)
  Destination UDP Port 200
  Source Interface Mgmt0
  DSCP 2
  Export Version 9
    Exporter-stats timeout 1200 seconds
    Data template timeout 1200 seconds
  Exporter Statistics
    Number of Flow Records Exported 0
    Number of Templates Exported 0
    Number of Export Packets Sent 0
    Number of Export Bytes Sent 0
    Number of Destination Unreachable Events 0
    Number of No Buffer Events 0
    Number of Packets Dropped (No Route to Host) 0
    Number of Packets Dropped (other) 0
    Number of Packets Dropped (LC to RP Error) 0
    Number of Packets Dropped (Output Drops) 1
    Time statistics were last cleared: Never
n1000v(config-flow-exporter-version-9)#
```

Defining a Flow Monitor

Use this procedure to create a Flow Monitor and associate a Flow Record and a Flow Exporter to it.

BEFORE YOU BEGIN

- A maximum of one flow monitor per interface per direction is permitted.
- You know the name of an existing Flow Exporter to associate with this flow monitor.

Send document comments to nexus1k-docfeedback@cisco.com.

- You know the name of an existing Flow Record to associate with this flow monitor. You can use either a flow record you previously created, or one of the following Cisco Nexus 1000V predefined flow records:
 - netflow-original
 - netflow ipv4 original-input
 - netflow ipv4 original-output
 - netflow protocol-port

For more information about Flow Records, see the “Flow Record Definition” section on page 11-2

SUMMARY STEPS

1. **config t**
2. **flow monitor** *name*
3. **description** *string*
4. **exporter** *name*
5. **record** *name*
6. **timeout** {**active** *value* | **inactive** *value*}
7. **cache** {**size** *value*}
8. **show flow monitor** [*name*]
9. **copy running-config startup-config**

DETAILED STEPS

	Command	Purpose
Step 1	config t Example: n1000v# config t n1000v(config)#	Places you in the CLI Global Configuration mode.
Step 2	flow monitor <i>name</i> Example: n1000v(config)# flow monitor MonitorTest n1000v(config-flow-monitor)#	Creates a flow monitor, by name, saves it in the running configuration, and then places you in the CLI Flow Monitor Configuration mode,
Step 3	description <i>string</i> Example: n1000v(config-flow-monitor)# description Ipv4Monitor	(Optional) For the specified flow monitor, adds a descriptive string, of up to 63 alphanumeric characters, and saves it in the running configuration.
Step 4	exporter <i>name</i> Example: n1000v(config-flow-monitor)# exporter Exportv9	For the specified flow monitor, adds an existing flow exporter and saves it in the running configuration.

Send document comments to nexus1k-docfeedback@cisco.com.

	Command	Purpose
Step 5	record { <i>name</i> netflow { <i>ipv4</i> }} Example using Cisco Nexus 1000V pre-defined record: n1000v(config-flow-monitor)# record netflow-original Example using user-defined record: n1000v(config-flow-monitor)# record RecordTest	For the specified flow monitor, adds an existing flow record and saves it in the running configuration. <ul style="list-style-type: none"> name: The name of a flow record you have previously created, or the name of a Cisco provided pre-defined flow record. netflow: Traditional NetFlow collection schemes <ul style="list-style-type: none"> ipv4: Traditional IPv4 NetFlow collection schemes
Step 6	timeout { <i>active value</i> <i>inactive value</i> } Example: n1000v(config-flow-monitor)# timeout inactive 600	(Optional) For the specified flow monitor, specifies an aging timer and its value for aging entries from the cache, and saves them in the running configuration. <ul style="list-style-type: none"> active: Active, or long, timeout. Allowable values are from 60 to 4092 seconds. Default is 1800. inactive: Inactive or normal timeout. Allowable values are from 15 to 4092 seconds. Default is 15.
Step 7	cache { <i>size value</i> } Example: n1000v(config-flow-monitor)# cache size 15000	(Optional) For the specified flow monitor, specifies the cache size, from 256 to 16384, entries, and saves it in the running configuration. Default is 4096. Note This option is used to limit the impact of the monitor cache on memory and performance.
Step 8	show flow monitor [<i>name</i>] Example: n1000v(config-flow-monitor)# show flow monitor Monitor Test	(Optional) Displays information about existing flow monitors.
Step 9	copy running-config startup-config Example: n1000v(config-flow-monitor)# copy running-config startup-config	(Optional) Saves the running configuration persistently through reboots and restarts by copying it to the startup configuration.

The following is an example of creating a flow exporter:

```
n1000v(config)# flow monitor MonitorTest
n1000v(config-flow-monitor)# description Ipv4Monitor
n1000v(config-flow-monitor)# exporter ExportTest
n1000v(config-flow-monitor)# record RecordTest
n1000v(config-flow-monitor)# cache size 15000
n1000v(config-flow-monitor)# timeout inactive 600
n1000v(config-flow-monitor)# show flow monitor MonitorTest
Flow Monitor monitorTest:
  Use count: 0
  Inactive timeout: 600
  Active timeout: 1800
  Cache Size: 15000
n1000v(config-flow-monitor)#
```

Send document comments to nexus1k-docfeedback@cisco.com.

Assigning a Flow Monitor to an Interface

Use this procedure to assign a flow monitor to an interface.

BEFORE YOU BEGIN

- You know the name of the flow monitor you want to use for the interface.
- You know the interface type and its number.

SUMMARY STEPS

1. **config t**
2. **interface** *interface-type interface-number*
3. **ip flow monitor** *name* {input | output}
4. **show flow** *interface-type interface-number*
5. **copy running-config startup-config**

DETAILED STEPS

	Command	Purpose
Step 1	config t Example: n1000v# config t n1000v(config)#	Places you in the CLI Global Configuration mode.
Step 2	interface <i>interface-type interface-number</i> Example: n1000v(config)# interface veth 2 n1000v(config-if)#	Places you in the CLI Interface Configuration mode for the specified interface.
Step 3	ip flow monitor <i>name</i> {input output} Example: n1000v(config-if)# ip flow monitor MonitorTest output	For the specified interface, assigns a flow monitor for input or output packets and saves it in the running configuration.
Step 4	show flow <i>interface-type interface-number</i> Example: n1000v(config-if)# show flow interface veth 2	(Optional) For the specified interface, displays the NetFlow configuration.
Step 5	copy running-config startup-config Example: n1000v(config-if)# copy running-config startup-config	(Optional) Saves the running configuration persistently through reboots and restarts by copying it to the startup configuration.

The following is an example showing how to assign a flow monitor to an interface:

```
n1000v(config)# interface veth 2
n1000v(config-if)# ip flow monitor MonitorTest output
n1000v(config-if)# show flow interface veth 2
Interface veth 2:
  Monitor: MonitorTest
  Direction: Output
```

[Send document comments to nexus1k-docfeedback@cisco.com.](mailto:nexus1k-docfeedback@cisco.com)

```
n1000v(config-if)#
```

Adding a Flow Monitor to a Port Profile

You can use this procedure to add a flow monitor to a port profile.

BEFORE YOU BEGIN

Before beginning this procedure, you must know or do the following:

- You are logged in to the CLI in EXEC mode.
- You have already created the flow monitor using the “[Defining a Flow Monitor](#)” procedure on [page 11-16](#).
- If using an existing port profile, you have already created the port profile and you know its name.
- If creating a new port profile, you know the type of interface (Ethernet or vEthernet), and you know the name you want to give it.
- For more information about port profiles, see the *Cisco Nexus 1000V Port Profile Configuration Guide, Release 4.2(1)SV1(4)*.

SUMMARY STEPS

1. **config t**
2. **port-profile** [type {**ethernet** | **vethernet**}] *name*
3. **ip flow monitor** *name* {**input** | **output**}
4. **show port-profile** [**brief** | **expand-interface** | **usage**] [**name** *profile-name*]
5. **copy running-config startup-config**

DETAILED STEPS

	Command	Description
Step 1	config t Example: n1000v# config t n1000v(config)#	Enters global configuration mode.
Step 2	port-profile [type { ethernet vethernet }] <i>name</i> Example: n1000v(config)# port-profile AccessProf n1000v(config-port-prof)#	Enters port profile configuration mode for the named port profile.
Step 3	ip flow monitor <i>name</i> { input output }	Applies a named flow monitor to the port profile for either incoming (input) or outgoing (output) traffic.
	Example: n1000v(config-port-prof)# ip flow monitor allaccess4 output n1000v(config-port-prof)#	

Send document comments to nexus1k-docfeedback@cisco.com.

	Command	Description
Step 4	<pre>show port-profile [brief expand-interface usage] [name profile-name]</pre> <p>Example: n1000v(config-port-prof)# show port-profile name AccessProf</p>	(Optional) Displays the configuration for verification.
Step 5	<pre>copy running-config startup-config</pre> <p>Example: n1000v(config-port-prof)# copy running-config startup-config</p>	(Optional) Saves the running configuration persistently through reboots and restarts by copying it to the startup configuration.

EXAMPLES

This example shows how to add a flow monitor to a port profile:

```
n1000v# config t
n1000v(config)# port-profile AccessProf
n1000v(config-port-prof)# ip flow monitor allaccess4 output
n1000v(config-port-prof)# show port-profile name AccessProf
port-profile AccessProf
  type: vethernet
  status: disabled
  capability l3control: no
  pinning control-vlan: -
  pinning packet-vlan: -
  system vlans: none
  port-group:
  max ports: 32
  inherit:
  config attributes:
    ip flow monitor allaccess4 output
  evaluated config attributes:
    ip flow monitor allaccess4 output
  assigned interfaces:n1000v(config-port-prof)#
```

Verifying the NetFlow Configuration

To verify the NetFlow configuration, use the commands in [Table 11-2](#):

Table 11-2 Verifying the NetFlow Configuration

Command	Purpose
<code>show flow exporter [name]</code>	Displays information about NetFlow flow exporter maps. See Example 11-5 on page 11-22 .
<code>show flow interface [interface-type number]</code>	Displays information about NetFlow interfaces. See Example 11-6 on page 11-23 .

Send document comments to nexus1k-docfeedback@cisco.com.

Table 11-2 Verifying the NetFlow Configuration (continued)

Command	Purpose
show flow monitor [<i>name</i> [cache module number statistics module number]]	<p>Displays information about NetFlow flow monitors.</p> <p>Note The show flow monitor cache command differs from the show flow monitor statistics command in that the cache command also displays cache entries . Since each processor has its own cache, all output of these commands is based on the number of processors on the server (also called module or host). When more than one processor is involved in processing packets for a single flow, then the same flow appears for each processor.</p> <p>See the following examples:</p> <ul style="list-style-type: none"> • Example 11-7 Show flow monitor, page 11-23 • Example 11-8 Show flow monitor cache module, page 11-23 • Example 11-9 Show flow monitor statistics module, page 11-24
show flow record [<i>name</i>]	Displays information about NetFlow flow records.

Example 11-5 Show flow exporter

```
n1000v(config-flow-exporter-version-9)# show flow exporter ExportTest
Flow exporter ExportTest:
  Description: ExportHamilton
  Destination: 192.0.2.1
  VRF: default (1)
  Destination UDP Port 200
  Source Interface 2
  DSCP 2
  Export Version 9
    Exporter-stats timeout 1200 seconds
    Data template timeout 1200 seconds
  Exporter Statistics
    Number of Flow Records Exported 0
    Number of Templates Exported 0
    Number of Export Packets Sent 0
    Number of Export Bytes Sent 0
    Number of Destination Unreachable Events 0
    Number of No Buffer Events 0
    Number of Packets Dropped (No Route to Host) 0
    Number of Packets Dropped (other) 0
    Number of Packets Dropped (LC to RP Error) 0
    Number of Packets Dropped (Output Drops) 1
    Time statistics were last cleared: Never
n1000v(config-flow-exporter-version-9)#
```

Send document comments to nexus1k-docfeedback@cisco.com.

Example 11-6 Show flow interface

```
n1000v(config-if)# show flow interface VEth2
Interface veth2:
  Monitor: MonitorTest
  Direction: Output
n1000v(config-if)#
```

Example 11-7 Show flow monitor

```
n1000v(config)# show flow monitor
Flow Monitor MonitorTest:
  Description: Ipv4Monitor
  Use count: 1
  Flow Record: test
  Flow Exporter: ExportTest
  Inactive timeout: 15
  Active timeout: 1800
  Cache Size: 15000
Flow Monitor MonitorIpv4:
  Description: exit
  Use count: 70
  Flow Record: RecordTest
  Flow Exporter: ExportIpv4
  Inactive timeout: 15
  Active timeout: 1800
  Cache Size: 4096
n1000v(config)#
```

Example 11-8 Show flow monitor cache module

```
n1000v# show flow monitor test_mon cache module 5
Cache type: Normal
Cache size (per-processor): 4096
High Watermark: 2
Flows added: 102
Flows aged: 099
- Active timeout 0
- Inactive timeout 099
- Event aged 0
- Watermark aged 0
- Emergency aged 0
- Permanent 0
- Immediate aged 0
- Fast aged 0

Cache entries on Processor0
- Active Flows: 2
- Free Flows: 4094

      IPV4 SRC ADDR   IPV4 DST ADDR  IP PROT  INTF INPUT  INTF OUTPUT  FLOW DIRN
=====
      0.0.0.0 255.255.255.255 17          Veth1          Input
      7.192.192.10 7.192.192.2 1          Veth1          Eth5/2      Input

Cache entries on Processor1
- Active Flows: 0
- Free Flows: 4096

Cache entries on Processor2
- Active Flows: 1
```

Send document comments to nexus1k-docfeedback@cisco.com.

- Free Flows: 4095

IPV4 SRC ADDR	IPV4 DST ADDR	IP PROT	INTF INPUT	INTF OUTPUT	FLOW DIRN
7.192.192.10	7.192.192.1	1	Veth1	Eth5/2	Input

Cache entries on Processor3

- Active Flows: 0
- Free Flows: 4096

Cache entries on Processor4

- Active Flows: 0
- Free Flows: 4096

Cache entries on Processor5

- Active Flows: 0
- Free Flows: 4096

Cache entries on Processor6

- Active Flows: 0
- Free Flows: 4096

Cache entries on Processor7

- Active Flows: 0
- Free Flows: 4096

Example 11-9 Show flow monitor statistics module

```
NX-1000v# show flow monitor test_mon statistics module 5
Cache type: Normal
Cache size (per-processor): 4096
High Watermark: 2
Flows added: 105
Flows aged: 103
  - Active timeout 0
  - Inactive timeout 103
  - Event aged 0
  - Watermark aged 0
  - Emergency aged 0
  - Permanent 0
  - Immediate aged 0
  - Fast aged 0

Cache entries on Processor0
  - Active Flows: 0
  - Free Flows: 4096

Cache entries on Processor1
  - Active Flows: 1
  - Free Flows: 4095

Cache entries on Processor2
  - Active Flows: 1
  - Free Flows: 4095

Cache entries on Processor3
  - Active Flows: 0
  - Free Flows: 4096

Cache entries on Processor4
  - Active Flows: 0
  - Free Flows: 4096
```


Send document comments to nexus1k-docfeedback@cisco.com.

```
Cache entries on Processor5
- Active Flows:          0
- Free Flows:           4096

Cache entries on Processor6
- Active Flows:          0
- Free Flows:           4096

Cache entries on Processor7
- Active Flows:          0
- Free Flows:           4096
```

Example 11-10 Show flow record

```
n1000v(config-flow-record)# show flow record RecordTest
Flow record RecordTest:
  Description: Ipv4flow
  No. of users: 0
  Template ID: 0
  Fields:
    match ipv4 destination address
    match interface input
    match interface output
    match flow direction
    collect counter packets
n1000v(config-flow-record)#
```

Configuration Example for NetFlow

The following example shows how to configure a flow monitor using a new flow record and applying it to an interface.

```
n1000v# config t
n1000v(config)# flow record RecordTest
n1000v(config-flow-record)# description Ipv4flow
n1000v(config-flow-record)# match ipv4 destination address
n1000v(config-flow-record)# collect counter packets
n1000v(config-flow-record)# exit
n1000v(config)# flow exporter ExportTest
n1000v(config-flow-exporter)# description ExportHamilton
n1000v(config-flow-exporter)# destination 192.0.2.1
n1000v(config-flow-exporter)# dscp 2
n1000v(config-flow-exporter)# source mgmt 0
n1000v(config-flow-exporter)# transport udp 200
n1000v(config-flow-exporter)# version 9
n1000v(config-flow-exporter-version-9)# option exporter-stats timeout 1200
n1000v(config-flow-exporter-version-9)# template data timeout 1200
n1000v(config-flow-exporter-version-9)# exit
n1000v(config-flow-exporter)# exit
n1000v(config)# flow monitor MonitorTest
n1000v(config-flow-monitor)# description Ipv4Monitor
n1000v(config-flow-monitor)# exporter ExportTest
n1000v(config-flow-monitor)# record RecordTest
n1000v(config-flow-monitor)# exit
n1000v(config)# interface veth 2/1
n1000v(config-if)# ip flow monitor MonitorTest output
n1000v(config-if)# show flow interface veth 2
Interface veth 2:
  Monitor: MonitorTest
```

Send document comments to nexus1k-docfeedback@cisco.com.

```
Direction: Output
n1000v(config-if)#
```

The following example shows how to configure flow monitor using a pre-defined record and applying it to an interface.

```
n1000v# config t
n1000v(config)# flow exporter ExportTest
n1000v(config-flow-exporter)# description ExportHamilton
n1000v(config-flow-exporter)# destination 192.0.2.1
n1000v(config-flow-exporter)# dscp 2
n1000v(config-flow-exporter)# source mgmt 0
n1000v(config-flow-exporter)# transport udp 200
n1000v(config-flow-exporter)# version 9
n1000v(config-flow-exporter-version-9)# option exporter-stats timeout 1200
n1000v(config-flow-exporter-version-9)# template data timeout 1200
n1000v(config-flow-exporter-version-9)# exit
n1000v(config-flow-exporter)# exit
n1000v(config)# flow monitor MonitorTest
n1000v(config-flow-monitor)# description Ipv4Monitor
n1000v(config-flow-monitor)# exporter ExportTest
n1000v(config-flow-monitor)# record netflow-original
n1000v(config-flow-monitor)# exit
n1000v(config)# interface veth 2/1
n1000v(config-if)# ip flow monitor MonitorTest output
n1000v(config-if)# show flow interface veth 2
Interface veth 2:
  Monitor: MonitorTest
  Direction: Output
n1000v(config-if)#
```

Additional References

For additional information related to implementing NetFlow, see the following sections:

- [Related Documents, page 11-26](#)
- [Standards, page 11-27](#)

Related Documents

Related Topic	Document Title
Cisco NetFlow Overview	http://cisco.com/en/US/products/ps6601/products_ios_protocol_group_home.html
Port profiles	<i>Cisco Nexus 1000V Port Profile Configuration Guide, Release 4.2(1)SV1(4)</i>
Complete command syntax, command mode, command history, defaults, usage guidelines, and examples for Cisco Nexus 1000V commands.	<i>Cisco Nexus 1000V Command Reference, Release 4.2(1)SV1(4)</i>

Send document comments to nexus1k-docfeedback@cisco.com.

Standards

Standards	Title
No new or modified standards are supported by this feature, and support for existing standards has not been modified by this feature.	—

Feature History for NetFlow

This section provides the NetFlow feature release history.

Feature Name	Releases	Feature Information
NAM support for NetFlow data sources	4.0(4)SV1(3)	NAM support for NetFlow data sources was added.
NetFlow	4.0(4)SV1(1)	NetFlow was introduced.

Send document comments to nexus1k-docfeedback@cisco.com.