



# CHAPTER 1

## Overview

---

This chapter describes the Cisco Nexus 1010 and Cisco Nexus 1010-X appliance and includes the following sections:

- [Information About Cisco Nexus 1010 Product Family, page 1-1](#)
- [Cisco Integrated Management Controller, page 1-1](#)
- [Software Included, page 1-2](#)
- [Flow Chart: Installing and Configuring the Cisco Nexus 1010 Product Family, page 1-2](#)
- [Additional References, page 1-5](#)

## Information About Cisco Nexus 1010 Product Family

The Cisco Nexus 1010 product family includes Cisco Nexus 1010 and Cisco Nexus 1010-X. The Cisco Nexus 1010 product family are networking appliances that can hosts up to six Cisco Nexus 1000V virtual service blades (VSBs) on Cisco Nexus 1010 and up to 10 VSBs on Cisco Nexus 1010-X.

Cisco Nexus 1010 product family supports VSBs like Cisco Nexus 1000V Virtual Supervisor Module (VSM), Network Analysis Module (NAM), Virtual Security Gateway (VSG), and Data Center Network Management Module (DCNM). The Cisco Nexus 1010 and Cisco Nexus 1010-X provides dedicated hardware for the VSM. VSMs that were hosted on VMware virtual machines can now be hosted on a Cisco Nexus 1010 or Cisco Nexus 1010-X appliance. This allows you to install and manage the VSM like a standard Cisco switch. The services (VSM, VSG,DCNM, or NAM) managed by the Cisco Nexus 1010 product family are called virtual service blades (VSBs).

See *Cisco Nexus 1010 Software Configuration Guide, Release 4.2(1)SP1(4)* for more information.

## Cisco Integrated Management Controller

The Cisco Integrated Management Controller (CIMC) is a software interface included with the Cisco Nexus 1010 product family. CIMC allows you to configure serial over LAN (SoL) access and set up remote management in the event the device becomes unreachable. For more information about remote management, see the *Cisco Nexus 1010 Software Configuration Guide, Release 4.2(1)SP1(4)*.

When installing the Cisco Nexus 1010 product family, you have the option to configure the CIMC interface. To configure the CIMC software while installing the Cisco Nexus 1010 product family, see the *Cisco Nexus 1010 Virtual Services Appliance Hardware Installation Guide*.

**[Send document comments to nexus1k-docfeedback@cisco.com.](mailto:nexus1k-docfeedback@cisco.com)**

## Software Included

The Cisco Nexus 1010 product family is shipped with the following software.

| Software   | Description  | ISO filename in bootflash repository       |
|--|--|--|
| Cisco Nexus 1010 or Cisco Nexus 1010-X ISO image | Image for the Cisco Nexus 1010 or Cisco Nexus 1010-X Manager virtual machine which manages the shelf and redundancy group configuration. | nexus-1010.4.2.1.SP1.4.iso <sup>1</sup>    |
| Cisco Nexus 1000V VSM                            | Used to create a VSB for the Cisco Nexus 1000V VSM on the Cisco Nexus 1010 product family  | nexus-1000v.4.2.1.SV1.5.1.iso <sup>2</sup> |
| Cisco NAM VSB                                    | Used to create a VSB for Cisco NAM on the Cisco Nexus 1010 product family  | nam-app-x86_64.5-1-2.iso <sup>2</sup>      |
| Cisco VSG VSB                                    | Used to create a VSB for Cisco VSG on the Cisco Nexus 1010 product family.   | nexus-1000v.VSG1.3.1.iso                   |
| Cisco DCMN VSB                                   | Used to create a VSB for Cisco DCNM on the Cisco Nexus 1010 product family.  | dcnm-installer-k9.5.2.2a.iso               |
| Cisco Integrated Management Controller (CIMC)    | A software interface that allows you to manage the Cisco Nexus 1010 should it become unreachable.  | N/A  |

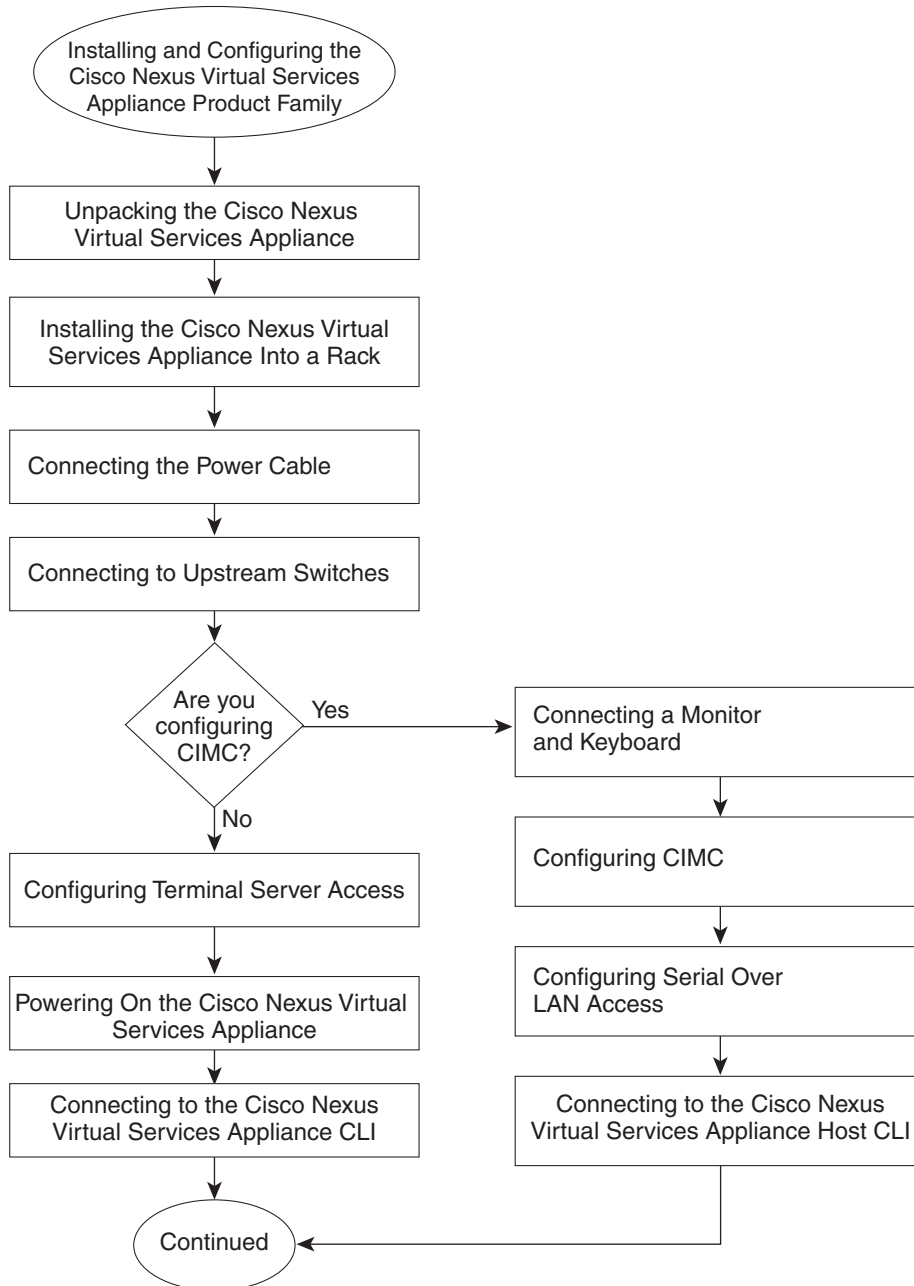
1. In the event of disk corruption on the Cisco Nexus 1010, the system can be brought up by copying the ISO image from a CD.
2. If it is necessary to update a VSB ISO file in bootflash, use the scp command to copy the new file version into the repository folder.

## Flow Chart: Installing and Configuring the Cisco Nexus 1010 Product Family

[Figure 1-1](#) and [Figure 1-2](#) show the basic steps for installing and configuring a Cisco Nexus 1010 or Cisco Nexus 1010-X. To install the Cisco Nexus 1010 or Cisco Nexus 1010-X hardware see the *Cisco Nexus 1010 Virtual Services Appliance Hardware Installation Guide*. To configure the Cisco Nexus 1010 product family see the *Cisco Nexus 1010 Software Configuration Guide, Release 4.2(1)SP1(4)*

***Send document comments to [nexus1k-docfeedback@cisco.com](mailto:nexus1k-docfeedback@cisco.com).***

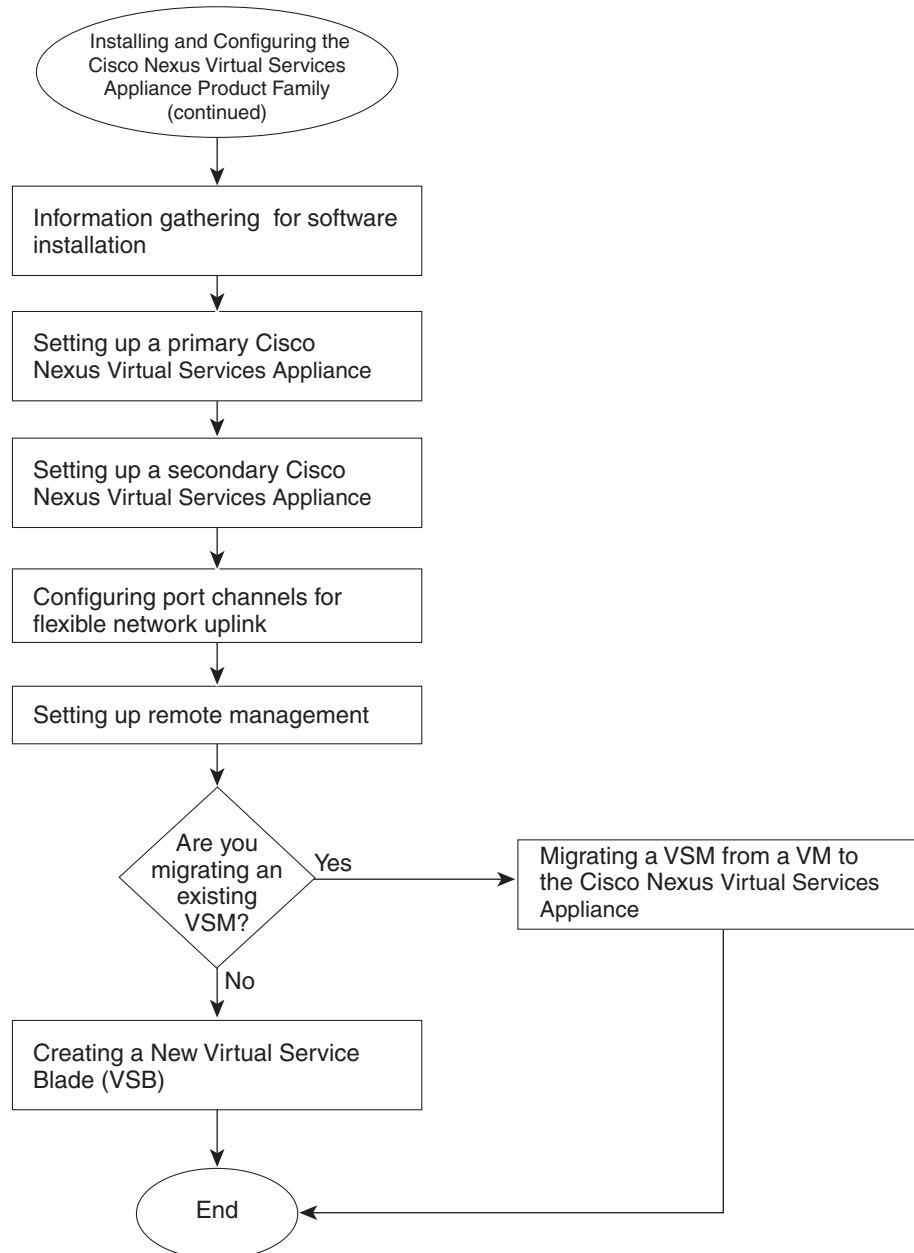
**Figure 1-1** Flow Chart: Installing and Configuring the Cisco Nexus 1010 Product Family



282579

**Send document comments to [nexus1k-docfeedback@cisco.com](mailto:nexus1k-docfeedback@cisco.com).**

**Figure 1-2 Flow Chart: Installing and Configuring the Cisco Nexus 1010 (continued)**



262580

***Send document comments to [nexus1k-docfeedback@cisco.com](mailto:nexus1k-docfeedback@cisco.com).***

## Additional References

| Related Topic                           | Document Title   |
|---|--|
| Hardware installation                   | <i>Cisco Nexus 1010 Virtual Services Appliance Hardware Installation Guide</i> |
| Cisco Nexus 1010 software configuration | <i>Cisco Nexus 1010 Software Configuration Guide, Release 4.2(1)SP1(4)</i>     |
| Cisco Nexus 1010 commands               | <i>Cisco Nexus 1010 Command Reference, Release 4.2(1)SP1(4)</i>                |
| CIMC management                         | <a href="#"><i>CIMC Firmware Management on UCS C-Series Servers</i></a>        |
| Deployment                              | <i>Cisco Nexus 1010 Virtual Services Appliance Deployment Guide</i>            |

***Send document comments to [nexus1k-docfeedback@cisco.com](mailto:nexus1k-docfeedback@cisco.com).***