



## CHAPTER 3

# Configuring Ethernet Interfaces

---

Fabric Manager and Device Manager display configuration settings and status information about the physical Ethernet interfaces on Cisco Nexus 5000 Series switches. However, you cannot change the configuration for physical Ethernet interfaces using Fabric Manager or Device Manager.

This chapter includes the following sections:

- [About Ethernet Interfaces, page 3-1](#)
- [Displaying Interface Information, page 3-1](#)
- [Default Settings, page 3-3](#)

## About Ethernet Interfaces

The Ethernet ports can operate as standard Ethernet interfaces connected to servers or to a LAN. The Ethernet interfaces also support Fibre Channel over Ethernet (FCoE). FCoE allows the physical Ethernet link to carry both Ethernet and Fibre Channel traffic.

On a Cisco Nexus 5000 Series switch, the Ethernet interfaces are enabled by default.

## Displaying Interface Information

Fabric Manager and Device Manager display configuration settings and status information about the physical Ethernet interfaces on Cisco Nexus 5000 Series switches.

This section describes how to display the Ethernet interface status and includes the following topics:

- [Displaying Interface Information Using Fabric Manager, page 3-1](#)
- [Displaying Interface Information Using Device Manager, page 3-2](#)

## Displaying Interface Information Using Fabric Manager

To display Ethernet interfaces using Fabric Manager, follow these steps:

- 
- Step 1** In the Physical Attributes pane, expand **Switches > Interfaces > Ethernet**, and then choose **Layer2**. You see the Ethernet interface information pane shown in [Figure 3-1](#). The General tab displays the description, speed, MAC address, and status for each Ethernet interface.

*Send documentation comments to [fm-docfeedback@cisco.com](mailto:fm-docfeedback@cisco.com)*

**Figure 3-1** Ethernet Information Pane

The screenshot shows the Cisco Fabric Manager 4.2(0.215) interface. The main pane displays a table of interface information for the Fabric\_nms-mds-02 switch. The table has columns for Switch, Interface, Description, Speed, PhysAddress, Admin, Oper, LastChange, and CDP. Below the table is a network diagram showing the topology of the Fabric\_nms-mds-02 switch, including connections to other switches like nms-eugene-03, nms-eugene-02, nms-eugene-04, nms-bend-01, and nms-mds-01.

Switch	Interface	Description	Speed	PhysAddress	Admin	Oper	LastChange	CDP
nms-bend-01	eth1/1		10 Gb	00:0d:ec:6d:cb:48	up	down	n/a	<input checked="" type="checkbox"/>
nms-eugene-04	eth1/1		10 Gb	00:0d:ec:a3:80:c8	up	down	n/a	<input checked="" type="checkbox"/>
nms-eugene-03	eth1/1		10 Gb	00:0d:ec:a3:71:88	up	down	n/a	<input checked="" type="checkbox"/>
nms-eugene-02	eth1/1		10 Gb	00:0d:ec:6d:81:08	up	down	n/a	<input checked="" type="checkbox"/>
nms-bend-01	eth1/2		10 Gb	00:0d:ec:6d:cb:49	up	down	n/a	<input checked="" type="checkbox"/>
nms-eugene-04	eth1/2		10 Gb	00:0d:ec:a3:80:c9	up	down	n/a	<input checked="" type="checkbox"/>
nms-eugene-03	eth1/2		10 Gb	00:0d:ec:a3:71:89	up	down	n/a	<input checked="" type="checkbox"/>

- Step 2** Click the **VLAN** tab to display the VLAN assigned to each interface.
- Step 3** Click the **CDP Neighbors** tab to display the CDP neighbor assigned to each interface.

## Displaying Interface Information Using Device Manager

To display Ethernet interfaces using Device Manager, follow these steps:

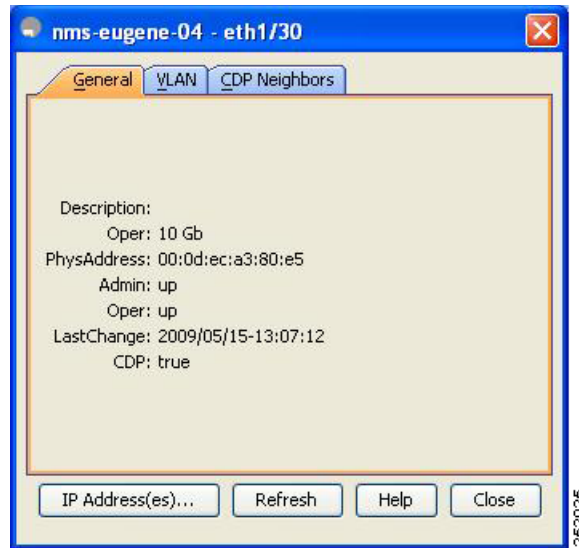
- Step 1** Launch Device Manager from the Cisco Nexus 5000 Series switch.
- Step 2** Choose **Interface > Ethernet**.

You see the Ethernet Interfaces dialog box shown in [Figure 3-2](#).

The General tab displays the description, speed, MAC address, and status for each interface.

**Send documentation comments to [fm-docfeedback@cisco.com](mailto:fm-docfeedback@cisco.com)**

**Figure 3-2 Ethernet Interfaces Dialog Box**



- Step 3** Click the **VLAN** tab to display the VLAN assigned to each interface.
- Step 4** Click the **CDP Neighbors** tab to display the CDP neighbor assigned to each interface.

## Default Settings

Table 3-1 lists the default settings for all physical Ethernet interfaces.

**Table 3-1 Default Ethernet Interface Parameters**

Parameters	Default
Oper Speed	10 GB
Admin Status	Up
CDP	True
VLAN Type	Static
VLAN List	1

***Send documentation comments to [fm-docfeedback@cisco.com](mailto:fm-docfeedback@cisco.com)***