



## CHAPTER 5

# Configuring SAN Device Virtualization

---

This chapter describes how to configure virtual devices to represent physical end devices for switches running Cisco MDS SAN-OS Release 3.1(2) and later, or NX-OS Release 4.1(1a) and later.

Cisco SAN device virtualization (SDV) is a licensed feature included in the Cisco MDS 9000 Family Enterprise package (ENTERPRISE\_PKG). Refer to the *Cisco NX-OS Family Licensing Guide* for details about acquiring licenses.

This chapter includes the following topics:

- [Information About SDV, page 5-1](#)
- [Licensing Requirements for SAN Device Virtualization, page 5-5](#)
- [Guidelines and Limitations, page 5-5](#)
- [Default Settings, page 5-7](#)
- [Configuring SDV, page 5-8](#)
- [Verifying SDV Configuration, page 5-17](#)
- [Configuration Example for SDV, page 5-18](#)
- [Verifying SDV Configuration, page 5-17](#)
- [Additional References, page 5-20](#)

## Information About SDV

As of Cisco SAN-OS Release 3.1(2) and later, you can use Cisco SAN device virtualization to create virtual devices that represent physical end-devices. Virtualization of SAN devices accelerates swayout or failover to a replacement disk array, and it also minimizes downtime when replacing host bus adapters (HBAs) or when rehosting an application on a different server.

SAN device virtualization enables you to:

- Reduce the amount of time it takes for data migration, and ultimately the overall amount of downtime.
- Improve ease-of-use and reduce the possibility of user-introduced errors during the failover by performing the operation in a single step.
- Easily scale to larger numbers of targets.

SAN devices that are virtualized can be either initiators or targets. You can virtualize targets to create a *virtual target* and also virtualize initiators to create a *virtual initiator*. SAN device configurations do not distinguish between virtual initiators and virtual targets (see [Figure 5-1](#) and [Figure 5-2](#)).

Send documentation comments to [dcnm-san-docfeedback@cisco.com](mailto:dcnm-san-docfeedback@cisco.com)

Figure 5-1 Target Virtualization

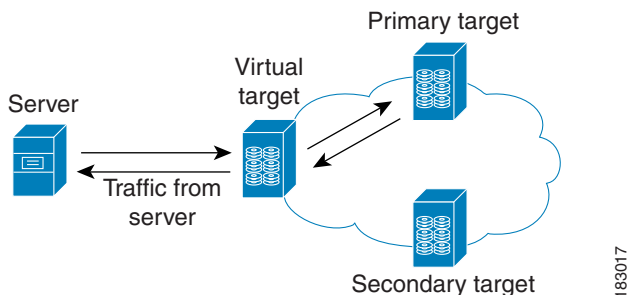
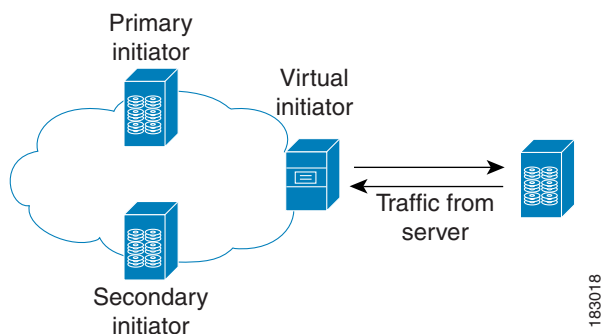


Figure 5-2 Initiator Virtualization

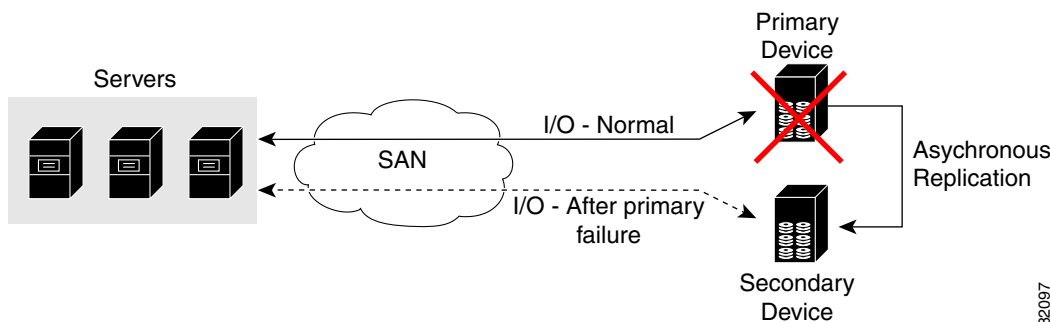


**Note**

While most of the examples in this chapter describe target virtualization, the initiator virtualization functions similarly.

Typically, today's deployments for handling device failures are designed for high availability (HA), with redundancy being a key part of this design. Consider the situation where a target is designed to be redundant. Two arrays are deployed—a primary and secondary in this situation. Enterprises often use some type of consistency technology (such as EMF SRDF) between the primary and secondary arrays to ensure that the secondary is a mirrored copy of the production LUN. However, if the primary array fails, it must be replaced by the secondary because all I/O must occur on the secondary array. Problems can occur because the time required to bring the secondary array up and have it working often takes longer than most can afford (Figure 5-3 illustrates this dilemma).

Figure 5-3 Typical Deployment for Handling Device Failures Before SDV



**Send documentation comments to [dcnm-san-docfeedback@cisco.com](mailto:dcnm-san-docfeedback@cisco.com)**

If a storage array is replaced *without* using Cisco SDV, then it may require the following actions:

- Taking down a server to modify zoning and account for the new array.
- Changing the Cisco NX-OS configuration to accommodate Fibre Channel IDs (FC IDs) and pWWNs of the new array.
- Changing a server configuration to accommodate the new FC IDs and pWWNs.

More specifically, without SDV you might experience the following conditions:

- It can take a considerable amount of time to configure a secondary device for a typical production environment.
- In the zoning configuration, all the initiators must be rezoned with the secondary device, and certain initiators must also be reconfigured. For example, the WWN and FC ID of the secondary device are different, so driver files must be changed and the server must be rebooted.
- Clustering (multiple initiators) compounds the problem, and the failover procedure must be repeated for each server of the cluster. Think of a server cluster as a set of HBAs—any storage array FC ID changes must be performed for each HBA.

SDV enables you to achieve the following performance targets:

- Reduce the amount of time it takes for data migration, and ultimately the overall amount of downtime.
- Easily scale to larger numbers of devices.

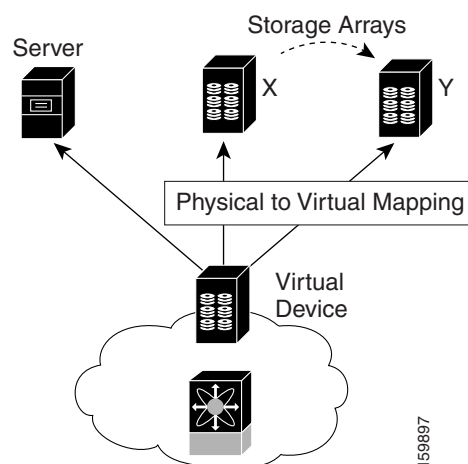
Figure 5-4 illustrates the benefits of SDV. In this configuration, disk array Y replaces disk array X. When disk array X was deployed, the user created virtual devices for all the Fibre Channel interfaces using SDV. After data replication from disk array X was completed, the user briefly pauses activity on the application server and relinked disk array Y to the virtual devices used by the server, completing the swapout of disk array X. No zoning changes or host operating system configuration changes were required during the time-critical period when the swap was performed; this significantly minimized application downtime.



**Note**

The array administrator will likely have to perform actions on array Y for it to become a primary device and accept server logins before linking the virtual device to the array Y pWWN.

**Figure 5-4 SDV Example**



***Send documentation comments to [dcnm-san-docfeedback@cisco.com](mailto:dcnm-san-docfeedback@cisco.com)***

This section includes the following topics:

- [Key Concepts, page 5-4](#)
- [Automatic Failover and Fallback, page 5-4](#)
- [Resolving Fabric Merge Conflicts, page 5-4](#)

## Key Concepts

The following terms are used throughout this chapter:

- **Virtual device**—The virtualized or proxy representation of the real device, which is registered with the name server and has a pWWN and FC ID. A virtual device exists as long as its real (physical) counterpart is online. The virtual device pWWN and FC ID must be unique and cannot clash with any real device pWWNs and FC IDs.
- **Virtual domain**—Reserved by SDV to assign FC IDs to virtual devices. If the switch that reserved the domain goes down, another switch takes over its role using the same domain.
- **Primary device**—The device that is configured as primary. By default, the primary device becomes the active device if it is online.
- **Secondary device**—The additional device that is configured. By default, the secondary device is standby.
- **Active device**—The device that is currently virtualized is called the active device. By default, the primary device becomes the active device if it is online. The active device is indicated by a (\*) symbol.

## Automatic Failover and Fallback

As of Cisco MDS NX-OS Release 4.1(1a), SAN device virtualization supports automatic failover and fallback configurations for the virtual devices. In all of the earlier releases, when there was a failure, you needed to manually configure the device as primary to make it active. With the introduction of automatic failover and fallback configurations, the active device is distinguished from the primary device indicated by a (\*) symbol.

- **Auto failover**—When there is a failure, the failover auto attribute automatically shuts down the primary device and brings up the secondary device to active state. When the primary device comes back online, it requires user intervention to switchover.
- **Auto failover with fallback**—In addition to automatic failover, when the primary device comes back online after a failover, the primary device is brought to active state and the secondary device moved to standby state.

To configure automatic failover, use the **attribute failover auto** command in SAN device virtualization configuration mode. To configure automatic failover and fallback, use the **attribute failover auto fallback** command. To identify the active device, use the **show sdv database** command.

## Resolving Fabric Merge Conflicts

Whenever two fabrics merge, SDV merges its database. A merge conflict can occur when there is a run-time information conflict or configuration mismatch. Run-time conflicts can occur due to:

- Identical pWWNs have been assigned to different virtual devices.

**[Send documentation comments to dcnm-san-docfeedback@cisco.com](mailto:dcnm-san-docfeedback@cisco.com)**

- The same virtual devices are assigned different pWWNs.
- The virtual device and virtual FC ID are mismatched.

A *blank commit* is a commit operation that does not contain configuration changes, and enforces the SDV configuration of the committing switch fabric-wide. A blank commit operation resolves merge conflicts by pushing the configuration from the committing switch throughout the fabric, which reinitializes the conflicting virtual devices. Exercise caution while performing this operation, as it can easily take some virtual devices offline.

Merge failures resulting from a pWWN conflict can cause a failure with the device alias as well. A blank commit operation on a merge-failed VSAN within SDV should resolve the merge failure in the device alias.

You can avoid merge conflicts due to configuration mismatch by ensuring that:

- The pWWN and device alias entries for a virtual device are identical (in terms of primary and secondary).
- There are no virtual device name conflicts across VSANs in fabrics.

## Licensing Requirements for SAN Device Virtualization

The following table shows the licensing requirements for this feature:

License	License Description
ENTERPRISE_PKG	The enterprise license is required for SAN device virtualization. For a complete explanation of the licensing scheme, see the <i>Cisco MDS 9000 Family NX-OS Licensing Guide</i> .

## Guidelines and Limitations

As of MDS NX-OS Release 4.1(1a), the following conditions must be considered when configuring the virtual device failover attributes:

- The attribute configuration is supported only with MDS NX-OS Release 4.1(1a) and later. In a mixed mode fabric where earlier releases are combined, the attribute configuration will fail.
- When the failover attribute is configured, if the primary device is offline then the secondary device becomes active.
- When the failover attribute is deleted after the primary device failover to the secondary device, then the primary becomes active if the primary device is online. If the primary device is not online, then the SDV virtual device is shut down.



### Note

The SDV attributes configuration is supported in Cisco DCNM for SAN Release 4.1(2) and later.

This section includes the guidelines and limitations for this feature:

- [SDV Requirements and Guidelines, page 5-6](#)
- [Guidelines for Downgrading SDV, page 5-6](#)
- [Downgrading with Attributes Configured, page 5-7](#)
- [Downgrading with Virtual Initiators Configured, page 5-7](#)
- [Downgrading with SDV LUN Zoning Configured, page 5-7](#)

[Send documentation comments to dcnm-san-docfeedback@cisco.com](mailto:dcnm-san-docfeedback@cisco.com)

## SDV Requirements and Guidelines

Be aware of the following requirements and guidelines as you plan and configure SDV:

- SDV should be enabled on switches where devices that are part of SDV zones are connected.
- SDV does not work for devices connected to non-MDS switches.
- Broadcast zoning is not supported for a zone with a virtual device.
- IVR and SDV cannot be used for the same device. A SDV-virtualized device cannot be part of an IVR zone or zoneset.
- Virtual device names should be unique across VSANs because they are registered with the device alias server, which is unaware of VSANs. For example, if you have enabled SDV and have registered a name, vt1 in both VSAN 1 and VSAN 2, then the device alias server cannot store both entries because they have the same name.
- You cannot specify the same primary device for different virtual devices.
- SDV does not work with soft zoning (*Soft zoning* means that zoning restrictions are applied only during interaction between the name server and the end device). If an end device somehow knows the FC ID of a device outside its zone, it can access that device; it does not work with the **zone default-zone permit vsan** operation (which would otherwise permit or deny traffic to members in the default zone).
- If devices are not already zoned with the initiators, then you can configure SDV virtual device zones with no negative impact. If they are already zoned, then zoning changes are required.
- The real device-virtual device zone cannot coexist with the real device-real device zone. If the real devices are not already zoned together, then you can configure the real device-virtual device zone with no negative impact. If these devices are already zoned, then adding the real device-virtual device zone may cause the zone activation to fail. If this occurs, then you must delete one of the zones before activation.

For example, a user attempts to create a configuration with zone A, which consists of I, the initiator, and T, the target (I,T), and zone B, which consists of a virtual initiator, VI, and real target, T (zone VI, T). Such a configuration would fail. Likewise, an attempt to configure zone C, which consists of an initiator, I, and target T, with zone D, which consists of an initiator, I, and virtual target, VT (zone I, VT), would also fail.



### Caution

There must be at least one SDV-enabled switch that is *not* a Cisco MDS 9124 Switch between the server and the device that are being virtualized. SDV does not work when initiators and primary devices are connected to the same Cisco MDS 9124 Switch.

## Guidelines for Downgrading SDV

As of MDS NX-OS Release 4.1(1a), SDV supports failover and fallback attribute configuration. Downgrading to an earlier release requires you to remove the attribute configurations before downgrading.

As of SAN-OS Release 3.1(3), SDV supports virtual initiators and LUN zoning. Consequently, in SAN-OS Releases 3.1(3) and later, if virtual initiators are configured or SDV devices are configured as LUN-based members of a zone, a configuration check will indicate that downgrading to SAN-OS Release 3.1(2) may be disruptive and is therefore not recommended.

[Send documentation comments to dcnm-san-docfeedback@cisco.com](mailto:dcnm-san-docfeedback@cisco.com)

## Downgrading with Attributes Configured

As of MDS NX-OS Release 4.1(1a), SDV supports failover and fallback attribute configuration. To successfully downgrade to an earlier release, you must remove the attribute configurations before downgrading.

## Downgrading with Virtual Initiators Configured

If SDV virtual initiators are configured, you will be unable to downgrade to SAN-OS Release 3.1(2).

This incompatibility only warns before a downgrade. We recommend that you remove the virtual initiator configuration or shut down the initiator port so that there are no inconsistencies in the downgraded version.



### Note

We also recommend that you trigger a manual discovery on all the switches before configuring the virtual initiators; in fact, you can trigger the discovery before proceeding to the downgrade by entering the following commands:

```
switch# discover scsi-target local os all
discovery started
switch# discover scsi-target remote os all
discovery started
switch#
```

## Downgrading with SDV LUN Zoning Configured

The following are downgrade scenarios when SDV LUN zoning is configured:

- Real initiator and SDV virtual target with LUN
- SDV virtual initiator and real target with LUN
- SDV virtual initiator and SDV virtual target with LUN

In each of these cases, a configuration check is registered to prevent users from downgrading to SAN-OS Release 3.1(2). This incompatibility will be disruptive if you proceed with the downgrade.

To avoid the configuration check, delete all the LUN zone members from SDV zones, and then activate the zone set before the downgrade.

## Default Settings

Table 5-1 lists the default settings for SDV parameters.

**Table 5-1** Default SDV Configuration Parameters

Parameters	Default
enable	disabled

[Send documentation comments to dcnm-san-docfeedback@cisco.com](mailto:dcnm-san-docfeedback@cisco.com)

## Configuring SDV

SDV is a distributed service and uses Cisco Fabric Services (CFS) distribution to synchronize the databases. When you configure SDV, it starts a CFS session and locks the fabric. When a fabric is locked, Cisco NX-OS software does not allow any configuration changes from a switch other than the switch holding the lock and issues a message to inform users about the locked status. Configuration changes are held in a pending database for the application. You must perform a commit operation to make the configuration active and to release the lock for all switches. You can discard or stop changes from being distributed by entering the **abort** or **clear** command.

Refer to the *Cisco MDS 9000 Family NX-OS System Management Configuration Guide* for more details about CFS.

**Note**

---

When you enable SDV, CFS distribution is also enabled; CFS distribution cannot be disabled for SDV.

---

This section includes the following topics:

- [Configuring a Virtual Device, page 5-8](#)
- [Configuring a Zone for a Virtual Device, page 5-11](#)
- [Configuring a Virtual Device with a Static FC ID, page 5-13](#)
- [Linking a Virtual Device with a Physical Device, page 5-13](#)
- [Configuring LUN Zone Members for SDV Devices, page 5-15](#)
- [Discarding Changes, page 5-16](#)
- [Clearing SDV Changes, page 5-16](#)

## Configuring a Virtual Device

A virtual device is identified by an alphanumeric name of up to 32 characters and defines all the real devices (one primary and one or more secondary) that it represents. Upon the successful creation of a virtual device, the virtual device name is internally registered as the device alias name with the device alias database; the pWWN is automatically assigned by the system using Cisco Organizational Unique Identifier (OUI). A virtual device appears as a real, physical device. You can enumerate up to 128 devices for a virtual device. There is a limit of 4095 on the number of virtual devices that you can create in a single VSAN.

**Note**

---

As of Cisco MDS SAN-OS Release 3.1(2) and NX-OS Release 4.1(1a), SDV supports up to 1024 virtual devices per VSAN.

---



**Send documentation comments to [dcnm-san-docfeedback@cisco.com](mailto:dcnm-san-docfeedback@cisco.com)**

## Detailed Steps

To configure a virtual device and commit it to the fabric configuration, follow these steps:

	Command	Purpose
Step 1	switch# <b>config t</b> switch(config)#	Enters configuration mode.
Step 2	switch(config)# <b>feature sdv</b>	Enables the SDV feature.  <b>Note</b> If you do not have the Cisco MDS 9000 Family Enterprise package license (ENTERPRISE_PKG) installed, this command will fail.
Step 3	switch(config)# <b>sdv virtual-device name</b> <b>vdev1 vsan 2</b>	Configures a virtual device alias name (vdev1). Enters SDV manager configuration submenu.
Step 4	switch(config-sdv-virt-dev) # <b>pwwn</b> <b>21:00:00:04:cf:cf:45:40 primary</b>  switch(config-sdv-virt-dev) # <b>pwwn</b> <b>21:00:00:04:cf:cf:38:d6</b>	Maps primary virtual device to the pWWN of real devices.  Maps secondary virtual device to pWWN of a real device.
Step 5	switch(config-sdv-virt-dev) # <b>attribute</b> <b>failover auto</b>  switch(config-sdv-virt-dev) # <b>attribute</b> <b>failover auto fallback</b>	(Optional) Automatically fails over from primary device to the secondary device.  (Optional) Automatically fails over, and then falls back to the primary device when the primary device comes online.
Step 6	switch(config-sdv-virt-dev) # <b>exit</b>	Exits SDV manager configuration submenu.
Step 7	switch(config)# <b>sdv commit vsan 2</b>	Commits the VSAN configuration to the fabric.
Step 8	switch(config) # <b>exit</b> switch# <b>show device-alias database</b>	Verifies that the virtualized device is registered in the device alias database.
Step 9	switch# <b>show fcns database vsan vsan 2</b>	If the primary device is online, verifies that the virtual device appears in the name server database and has the correct FC4 type (Fibre Channel Layer 4).

To configure a virtual target and commit it to the fabric configuration, follow these steps:

- Step 1** Expand SAN in the Logical Domains pane, and then expand the fabric in which your VSAN resides.
- Step 2** Expand the VSAN in which you want to create the virtual target and select SDV. You see the switches in the VSAN that you selected listed in the Information pane.
- Step 3** In the **Control** tab, select **enable** from the drop-down menu in the Command column to enable SAN device virtualization for a particular switch in the VSAN.
- Step 4** Click the **Apply Changes** icon to commit the configuration change.
- Step 5** Click the **CFS** tab. Confirm that the SAN device virtualization feature is enabled for the switch.
- Step 6** Click the **Virtual Devices** tab and then click the **Create Row** icon.  
You see the Create Virtual Devices dialog box.
- Step 7** Select the Virtual Device ID from the drop-down list (ranges from 1 to 4096).

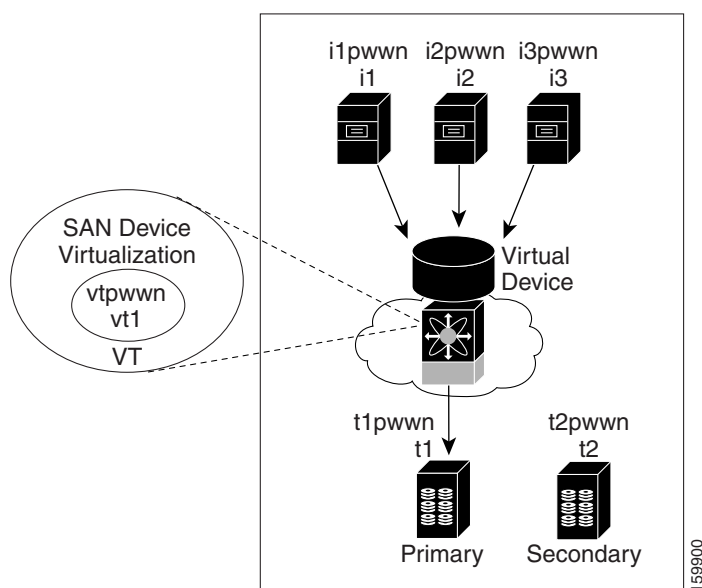
**Send documentation comments to [dcnm-san-docfeedback@cisco.com](mailto:dcnm-san-docfeedback@cisco.com)**

- Step 8** Enter a Name for the Virtual Device. Select the Virtual Domain and enter a Virtual FC ID for the virtual target.
- Step 9** Check only the **autoFailover** check box or check the **autoFailover** and **primFallback** check boxes. For more information, see the “[Automatic Failover and Fallback](#)” section on page 5-4. You can also change the option in the Option column of the Virtual Devices tab.
- Step 10** Click **Create** to create the virtual target.
- Step 11** Click the **CFS** icon to commit and distribute the configuration changes.

## Examples

Figure 5-5 shows a configuration that includes a new virtual device, vt1.

**Figure 5-5** *Creating a Virtual Device*



The pWWN of the virtual target does not appear in the zoning end devices database in DCNM-SAN. If you want to zone the virtual device with a pWWN, you must enter it in the Add Member to Zone dialog box when creating a zone. However, if the device alias is in enhanced mode, the virtual device names appear in the device alias database in the DCNM-SAN zoning window. In this case, users can choose to select either the device alias name or enter the pWWN in the Add Member to Zone dialog box.

For more information, see the “[Adding Zone Members](#)” section on page 7-18.

This example shows the virtual device status without automatic failover configurations:

```
switch# show sdv database
sdv virtual-device name vdev1 vsan 1s
[ WWN:50:00:53:04:48:3c:01 FCID:0x42000c Real-FCID:0xeb0001 ]
  * device-alias dev1 primary
    device-alias dev2
```

This example shows the virtual device status with automatic failover configuration, after the failover:

```
switch# show sdv database
```

[Send documentation comments to dcnm-san-docfeedback@cisco.com](mailto:dcnm-san-docfeedback@cisco.com)

```
sdv virtual-device name vdev1 vsan 1
[ WWN:50:00:53:04:48:3c:01 FCID:0x42000c Real-FCID:0xeb0001 ]
  device-alias dev1 primary
  * device-alias dev2
  attribute failover auto
```

This example shows the virtual device status with automatic failover and fallback configurations, after fallback:

```
switch# show sdv database
sdv virtual-device name vdev1 vsan 1
[ WWN:50:00:53:04:48:3c:01 FCID:0x42000c Real-FCID:0xeb0001 ]
  * device-alias dev1 primary
  device-alias dev2
  attribute failover auto fallback
```

## Configuring a Zone for a Virtual Device

After configuring a virtual device, you must create a zone that includes all the other real devices and the virtual device as members, and add this zone to a zone set, which you can activate. You can add the virtual device to the zone using the configured name and member type as the device alias.



### Note

This configuration process does not support interoperability. If you are working in interop-VSANs, we recommend that you configure the zone directly using the system-assigned pWWN of the virtual device.

### Detailed Steps

To add the virtual device to a zone as a zone member, follow these steps:

	Command	Purpose
Step 1	switch# <b>config t</b>	Enters configuration mode.
Step 2	switch(config)# <b>zoneset name zs1 vsan 1</b>	Groups zones under one zone set named zs1 in the VSAN, vsan 1. Enters zone set submode.
Step 3	switch(config-zoneset)# <b>zone name zone1</b>	Creates the zone zone1.
Step 4	switch(config-zoneset-zone)# <b>member device-alias vdev1</b> or switch (config-zoneset-zone)# <b>member pwwn 50:00:53:00:01:fa:70:09</b>	Adds a virtual device (vdev1) as device-alias type zone member to the zone. Alternatively, adds a virtual device as pWWN type zone member to the zone.
Step 5	switch(config-zoneset-zone)# <b>member pwwn 21:22:5:d8:15:11:8:8</b>	Adds the real device to the zone.
Step 6	switch(config-zoneset-zone)# <b>end</b>	Exits all modes.
Step 7	switch# <b>show zoneset</b>	Displays the zone sets configured for the VSAN, vsan 1, in step 4, as well as the primary and secondary pWWNs.
Step 8	switch# <b>config t</b>	Enters configuration mode.
Step 9	switch(config)# <b>zoneset activate name zs1 vsan 1</b>	Activates the new zone, zs1 for the VSAN, vsan1.

**Send documentation comments to [dcnm-san-docfeedback@cisco.com](mailto:dcnm-san-docfeedback@cisco.com)**

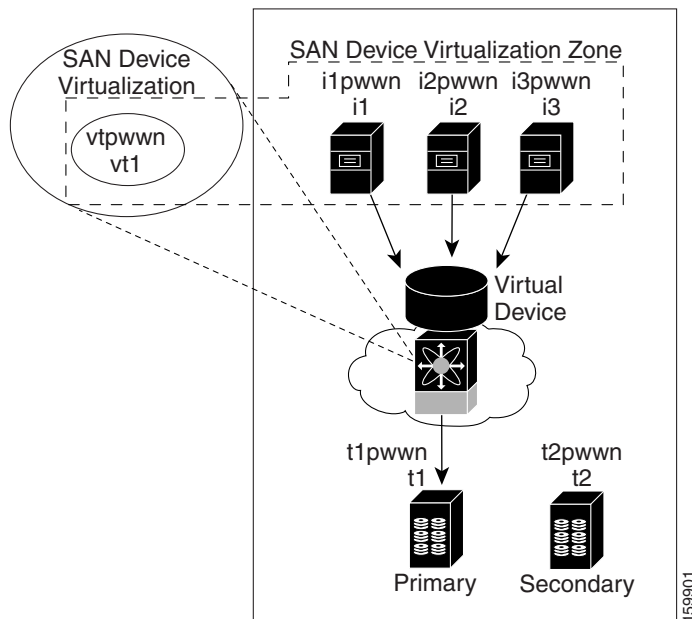
<b>Step 10</b>	<code>switch(config)# end</code>	Exits all modes.
<b>Step 11</b>	<code>switch# show zoneset active vsan 1</code>	Displays the active zone for the VSAN, vsan1. Confirms the zone set and zone names.

Set the device alias mode to enhanced when using SDV (because the pWWN of a virtual device could change).

## Examples

Figure 5-6 shows a virtual device-name device alias (vt1) zoned with the real devices activated; the primary device is online.

**Figure 5-6 Zoning the Virtual Device with Real Devices**



SDV is enabled on a switch and a virtual device is defined. SDV assigns a pWWN for the virtual device, and it is zoned based on the pWWN in a zone. If you later disable SDV, this configuration is lost. If you reenable SDV and create the virtual device using the same name, there is no guarantee that it will get the same pWWN again. You would have to rezone the pWWN-based zone. However, if you perform zoning based on the device-alias name, there are no configuration changes required if or when the pWWN changes.

Be sure you understand how device alias modes work before enabling them. Refer to [Chapter 8, “Distributing Device Alias Services”](#) for details and requirements about device alias modes.

[Send documentation comments to dcnm-san-docfeedback@cisco.com](mailto:dcnm-san-docfeedback@cisco.com)

## Configuring a Virtual Device with a Static FC ID

Typically, the FC ID for the virtual device is assigned by the system. There is a virtual domain reserved and advertised for SDV devices and it is used when allocating the FC ID. The FC ID is registered with the name server and has the same FC4 properties as the primary device it represents.

When a fabric containing a virtual device configuration reboots, the virtual device's domain or FC ID may change; there is no guarantee that the virtual device FC ID will remain the same because it is not a part of the configuration. You can define the FC ID for a virtual device to be static. Configuring a device to have a static FC ID ensures that the same FC ID is used for the virtual device configuration across NX-OS reboots, and it also provides the following benefits:

- Makes it easier for SAN administrators to plan and design the SAN (for example, administrators can assign virtual domains and FC IDs to be used by virtual devices).
- Improves monitoring and troubleshooting because the same FC ID is assigned to a virtual device on every instance.



### Note

This procedure is optional, but we recommend it. You can also configure a static domain ID. Only the domain part of the FC ID is static; other values are system-assigned.

If you are using SDV to virtualize devices for either AIX or HP-UX platforms, we recommend you create a static FC ID.

### Detailed Steps

To configure a static FC ID when creating a virtual device, follow these steps:

	Command	Purpose
Step 1	switch# <b>config t</b> switch(config)#	Enters configuration mode.
Step 2	switch(config)# <b>sdv virtual-device name</b> <b>vdev1 vsan 2</b>	Configures a virtual device alias name (vdev1) and defines its primary device (vsan 2). Enters SDV manager configuration submode.
Step 3	switch(config-sdv-virt-dev) # <b>virtual-fcid</b> <b>0x960001</b> switch(config-sdv-virt-dev) # <b>exit</b>	Assigns the FC ID 0x960001 to the virtual device. Exits SDV manager configuration submode.
Step 4	switch(config)# <b>sdv commit vsan 2</b>	Commits the VSAN configuration to the fabric.

## Linking a Virtual Device with a Physical Device

After creating a virtual device and configuring it as part of a zone, you can define the primary device for it using the **link** command, which is also used to fail over to the secondary device.



### Note

When a link operation fails over to the secondary device, the virtual device is taken offline, and then brought online.

**Send documentation comments to [dcnm-san-docfeedback@cisco.com](mailto:dcnm-san-docfeedback@cisco.com)**

## Prerequisites

As of MDS NX-OS Release 4.1(1a), the following conditions must be considered before linking a device:

- If you link to the secondary device which is currently active because of failover, the primary tag is moved to the secondary device and the secondary device becomes the primary device.

This example shows the status of the SDV database after the link operation:

```
switch# show sdv database
sdv virtual-device name vdev1 vsan 1
[ WWN:50:00:53:04:48:3c:01 FCID:0x42000c Real-FCID:0xeb0001 ]
  device-alias dev1
  * device-alias dev2 primary
  attribute failover auto
```

- When the secondary device is active, if you link to a third device, and if the fallback attribute was not configured, the third device becomes the primary device but the secondary device continues to be the active device.

This example shows the status of the SDV database after the link operation:

```
switch# show sdv database
sdv virtual-device name vdev1 vsan 1
[ WWN:50:00:53:04:48:3c:01 FCID:0x42000c Real-FCID:0xeb0001 ]
  device-alias dev1
  * device-alias dev2
  device-alias dev3 primary
  attribute failover auto
```

- When the secondary device is active, if you link to a third device, and if the fallback attribute was configured, then the third device becomes the primary device as well as the active device.

This example shows the status of the SDV database after the link operation:

```
switch# show sdv database
sdv virtual-device name vdev1 vsan 1
[ WWN:50:00:53:04:48:3c:01 FCID:0x42000c Real-FCID:0xeb0001 ]
  device-alias dev1
  device-alias dev2
  * device-alias dev3 primary
  attribute failover auto fallback
```

## Detailed Steps

To link a virtual target with a physical target, follow these steps:

	Command	Purpose
Step 1	switch# <b>config t</b> switch(config)#	Enters configuration mode.
Step 2	switch(config)# <b>sdv virtual-device name vdev1 vsan 2</b>	Configures a virtual target alias name (vdev1) and defines its primary target (vsan 2).  Enters SAN device virtualization manager configuration submode.

**Send documentation comments to [dcnm-san-docfeedback@cisco.com](mailto:dcnm-san-docfeedback@cisco.com)**

	Command	Purpose
<b>Step 3</b>	<code>switch(config-sdv-virt-dev)# link pwwn 21:00:00:04:cf:cf:45:40 vsan 2</code>	Links the virtual target pWWN to a physical target.
	<code>switch(config-sdv-virt-dev)# exit</code>	Exits SAN device virtualization manager submenu.
<b>Step 4</b>	<code>switch(config)# sdv commit vsan 2</code>	Commits the VSAN configuration to the fabric.

To link a virtual target with a physical target, follow these steps:

- 
- Step 1** Click the **Real Devices** tab and then click the **Create Row** icon.
  - Step 2** Select the Virtual Device ID from the pull-down list or enter an existing ID for the virtual target that you are linking with a physical target.
  - Step 3** Select the Real Device ID of the physical target that you are linking with the virtual target.
  - Step 4** Click either the **pWWN** or **deviceAlias** radio button, and select the appropriate pWWN or device alias from the pull-down menu. The Name field is automatically populated when you select the pWWN or device alias.
  - Step 5** Click either the **primary** or **secondary** radio button for the Map Type.
  - Step 6** Click the **CFS** icon to save and distribute these changes, or click **Close** to discard any unsaved changes.
- 

## Configuring LUN Zone Members for SDV Devices

You can configure LUN zone members for SDV devices. Following are the types of SDV LUN zone configurations for existing real devices and configured SDV devices:

- Real initiator (I1)
- Real target (T1) supporting LUNs from 0 to 12
- Virtual target (VT1) virtualizing the real target (T1)
- Virtual initiator (VI1) virtualizing real initiator (I1)

### Real Initiator and SDV Virtual Target with LUN

In [Example 5-1](#) a real initiator is zoned with an SDV virtual target (including the LUN).

**Example 5-1 Real Initiator and SDV Virtual Target with LUN**

```
zoneset name zs1 vsan 2
  zone name z1 vsan 2
    member device-alias I1
    member device-alias VT1 lun 0
    member device-alias VT2 lun 1
```

### SDV Virtual Initiator and Real Target with LUN

In [Example 5-2](#) an SDV virtual initiator is zoned with a real target (including the LUN).

**Send documentation comments to [dcnm-san-docfeedback@cisco.com](mailto:dcnm-san-docfeedback@cisco.com)**

**Example 5-2 SDV Virtual Initiator and Real Target with LUN**

```
zoneset name zs2 vsan 1
  zone name z2 vsan 1
    member device-alias VI1
    member device-alias T1 lun 0
    member device-alias T2 lun 1
```

## SDV Virtual Initiator and SDV Virtual Target with LUN

In [Example 5-3](#) an SDV virtual initiator is zoned with an SDV virtual target (including the LUN).

**Example 5-3**

```
zoneset name zs3 vsan 1
  zone name z3 vsan 1
    member device-alias VI1
    member device-alias VT1 lun 0
    member device-alias VT2 lun
```

## Discarding Changes

At any time, you can discard the uncommitted changes to the running configuration and release the fabric lock (prior to entering the **sdv commit** command). If you discard the pending changes, the configuration remains unaffected and the lock is released.

### Detailed Steps

To discard uncommitted SDV configuration changes and release the lock, follow these steps:

	Command	Purpose
Step 1	switch# <b>config t</b> switch(config)#	Enters configuration mode.
Step 2	switch(config)# <b>sdv abort vsan 10</b>	Discards the pending configuration changes.

## Clearing SDV Changes

If you have performed a SDV task and have forgotten to release the lock by either committing or discarding the changes, an administrator can release the lock from any switch in the fabric. If the administrator performs this task, your changes to the pending database are discarded and the fabric lock is released.



**Tip**

The pending database is only available in the volatile directory and is subject to being discarded if the switch is restarted.

### Detailed Steps

To use administrative privileges and release a locked SDV session, use the **clear sdv session** command in EXEC mode.

```
switch# clear sdv session vsan 2
```



[Send documentation comments to dcnm-san-docfeedback@cisco.com](mailto:dcnm-san-docfeedback@cisco.com)

## Verifying SDV Configuration

To display the SDV configuration information, perform one of the following tasks:

Command	Purpose
show sdv session status vsan 1	Display the results of the last commit to the SDV database
show sdv merge status vsan 1	Display the results of the last CFS SDV fabric merge for a VSAN
show sdv database vsan 2	Display details about the SDV database
show sdv statistics vsan 1	Display statistics about SDV for a VSAN

For detailed information about the fields in the output from these commands, refer to the *Cisco MDS 9000 Family Command Reference*.

This section has the following topics:

- [Displaying SDV Information, page 5-17](#)

## Displaying SDV Information

To display the results of the last commit to the SDV database, enter this command:

```
switch# show sdv session status vsan 1
Session Parameters for VSAN: 1
-----
Last Action Time Stamp      : Fri Feb  2 10:17:20 2007
Last Action                 : Commit
Last Action Result         : Success
Last Action Failure Reason : none
```

To display the results of the last CFS SDV fabric merge for a VSAN, enter this command:

```
switch# show sdv merge status vsan 1
Merge Status for VSAN      : 1
-----
Last Merge Time Stamp     : None
Last Merge State          : None
Last Merge Result         : SUCCESS
Last Merge Failure Reason : None [cfs_status: 0]
```

To display details about the SDV database, enter this command:

```
switch# show sdv database vsan 2
sdv virtual-device name vdev1 vsan 2
[ WWN:50:00:53:00:00:d2:e0:01 FCID:0x960001 Real-FCID:0x9f0201 ]
  virtual-fcid 0x960001
* pwwn 21:00:00:04:cf:cf:45:40 primary
  pwwn 21:00:00:04:cf:cf:38:d6
```

To display statistics about SDV for a VSAN, enter this command:

```
switch# show sdv statistics vsan 1
VSAN ELS-CMD   Requests  Accepts  Rejects  Drops
-----
1     ELS_PLOGI   54       54       0         0
```

[Send documentation comments to dcnm-san-docfeedback@cisco.com](mailto:dcnm-san-docfeedback@cisco.com)

```
1   ELS_RRQ      2           2           0           0
1   ELS_PRLI    54          54          0           0
```

## Configuration Example for SDV

The following example shows all tasks (required and optional) associated with configuring SDV:

### Step 1 Enter configuration mode.

```
switch# config t
Enter configuration commands, one per line. End with CNTL/Z.
```

### Step 2 Enable SDV.

```
switch(config)# feature sdv
```

### Step 3 Locate the pWWNs of the devices in the VSAN (vsan 2). Record the pWWNs, as you will need them in the next step when you create a virtual device.

```
switch(config)# do show fcns database vsan 2
VSAN 2:
-----
FCID          TYPE  PWWN                               (VENDOR)          FC4-TYPE:FEATURE
-----
0x9f0201      NL    21:00:00:04:cf:cf:45:40 (Seagate)         scsi-fcp
0x9f0423      NL    21:00:00:04:cf:cf:38:d6 (Seagate)         scsi-fcp

Total number of entries = 2
```

### Step 4 Create a virtual device (vdev1) for the VSAN and specify both the primary and secondary pWWNs.

```
switch(config)# sdv virtual-device name vdev1 vsan 2
switch(config-sdv-virt-dev)# pwwn 21:00:00:04:cf:cf:45:40 primary
switch(config-sdv-virt-dev)# pwwn 21:00:00:04:cf:cf:38:d6
```

### Step 5 Configure automatic failover and fallback attributes.

```
switch(config-sdv-virt-dev)# attribute failover auto
switch(config-sdv-virt-dev)# attribute failover auto fallback
```

### Step 6 Create a static FC ID for the target device.

```
switch(config-sdv-virt-dev)# virtual-fcid 0x960001
switch(config-sdv-virt-dev)# exit
```

### Step 7 Commit the new virtual device configuration to the fabric.

```
switch(config)# sdv commit vsan 2
switch(config)# exit
```

### Step 8 Enter the **show sdv database** command, which displays the primary and secondary virtual devices created when you configured the virtual device in the VSAN (vsan 2). Ensure that the virtual device name, pWWNs, and FC ID are correct.

```
switch# show sdv database vsan 2
sdv virtual-device name vdev1 vsan 2
[ WWN:50:00:53:00:00:d2:e0:01 FCID:0x960001 Real-FCID:0x9f0201 ]
  virtual-fcid 0x960001
* pwwn 21:00:00:04:cf:cf:45:40 primary
  pwwn 21:00:00:04:cf:cf:38:d6
```

**Send documentation comments to [dcnm-san-docfeedback@cisco.com](mailto:dcnm-san-docfeedback@cisco.com)**

- Step 9** Enter the **show device-alias database** command, which displays the contents of the device alias database. Ensure that the new virtual device name appears and that the name is correct.

```
switch# show device-alias database

device-alias name vdev1 pwwn 50:00:53:00:01:c9:70:01

Total number of entries = 1
```

- Step 10** Create a zone member under one zone set named zs1 in the VSAN (vsan 2) and add the virtual target device to the new zone using the device alias member type. Before activating the new zone, display the zoneset information to ensure that the zoneset name, zone name, and pWWNs are correct.

```
switch# config t
Enter configuration commands, one per line. End with CNTL/Z.
switch(config)# zoneset name zs1 vsan 2
switch(config-zoneset)# zone name zzz1
switch(config-zoneset-zone)# member device-alias vdev1
switch(config-zoneset-zone)# member pwwn 21:00:03:04:55:cf:d6:40
switch(config-zoneset-zone)# end
switch# show zoneset
zoneset name zs1 vsan 2
  zone name zzz1 vsan 2
    pwwn 50:00:53:00:01:c9:70:01 [vdev1]
    pwwn 21:00:03:04:55:cf:d6:40
```

- Step 11** Activate the new zone configuration.

```
switch(config)# zoneset activate name zs1 vsan 2
Zoneset activation initiated. check zone status
switch(config)# exit
```

- Step 12** Display the active zoneset to ensure the data in the new zone configuration is correct. Also confirm that the pWWNs are correct.

```
switch# show zoneset active vsan 2
zoneset name zs1 vsan 2
  zone name zzz1 vsan 2
    * fcid 0x211324 [pwwn 50:00:53:00:01:c9:70:01] [vdev1]
    pwwn 21:00:03:04:55:cf:d6:40

switch# show sdv database vsan 2
sdv virtual-device name vdev1 vsan 2
[ WWN:50:00:53:00:00:d2:e0:01 FCID:0x960001 Real-FCID:0x9f0201 ]
  virtual-fcid 0x960001
  * pwwn 21:00:00:04:cf:cf:45:40 primary
  pwwn 21:00:00:04:cf:cf:38:d6
```

- Step 13** Enter the SDV manager configuration submode and display the pWWNs for the virtual devices in vsan 2. After making a note of the pWWNs, migrate the primary virtual device to the secondary device, link this new primary device to a physical device, and then commit this configuration to the fabric. Confirm that the secondary virtual device is now the primary.

```
switch# conf t

switch(config-sdv-virt-dev)# link pwwn 21:00:00:04:cf:cf:38:d6
switch(config-sdv-virt-dev)# exit
switch(config)# sdv commit vsan 2
switch(config)# do show sdv database vsan 2
sdv virtual-device name vdev1 vsan 2
[ WWN:50:00:53:00:00:d2:e0:01 FCID:0x960001 Real-FCID:0x9f0423 ]
  virtual-fcid 0x960001
  pwwn 21:00:00:04:cf:cf:45:40
  * pwwn 21:00:00:04:cf:cf:38:d6 primary
```

**Send documentation comments to [dcnm-san-docfeedback@cisco.com](mailto:dcnm-san-docfeedback@cisco.com)**

```
virtual-device name vdev2 vsan 2
[ WWN:50:00:53:00:00:0b:50:01 ]
```

## Field Descriptions for SDV

This section displays the field descriptions for this feature.

### SDV Virtual Devices

Field	Description
Name	Represents the name of this virtual device.
Virtual Domain	The user preference for a persistent Domain ID for this virtual device to indicate a specific partition (domain) of the fabric that this virtual device should belong to.
Virtual FCID	The user preference for a persistent FCID for this virtual device.
Port WWN	The assigned pWWN for this virtual device. The agent assigns this value when the configuration is committed.
Node WWN	The assigned nWWN for this virtual device. The agent assigns this value when the configuration is committed.
Assigned FCID	The assigned FCID of this virtual device. The agent assigns this value when the configuration is committed and the real device that this virtual device virtualizes is online.
Real Device Map List	The set of real device(s) that this virtual device virtualizes in this VSAN.

### SDV Real Devices

Field	Description
Type	The type of real device identifier represented by the value of the corresponding instance of cFcSdvVirtRealDeviceId that this virtual device virtualizes to.
Name	Represents a real device(s) identifier that this virtual device virtualizes.
Map Type	The mapping association type of the real device(s) (initiator/target).

## Additional References

For additional information related to implementing VSANs, see the following section:

- [Related Document, page 5-21](#)

***Send documentation comments to [dcnm-san-docfeedback@cisco.com](mailto:dcnm-san-docfeedback@cisco.com)***

- [Standards, page 5-21](#)
- [RFCs, page 5-21](#)
- [MIBs, page 5-21](#)

## Related Document

Related Topic	Document Title
Cisco MDS 9000 Family Command Reference	<i>Cisco MDS 9000 Family Command Reference</i>

## Standards

Standard	Title
No new or modified standards are supported by this feature, and support for existing standards has not been modified by this feature.	–

## RFCs

RFC	Title
No new or modified RFCs are supported by this feature, and support for existing RFCs has not been modified.	–

## MIBs

MIBs	MIBs Link
<ul style="list-style-type: none"> <li>• CISCO-FC-SDV-MIB</li> </ul>	To locate and download MIBs, go to the following URL: <a href="http://www.cisco.com/en/US/products/ps5989/prod_technical_reference_list.html">http://www.cisco.com/en/US/products/ps5989/prod_technical_reference_list.html</a>

***Send documentation comments to [dcnm-san-docfeedback@cisco.com](mailto:dcnm-san-docfeedback@cisco.com)***