



# Fabric Initialization and Switch Discovery

---

This chapter contains the following sections:

- [Initializing the Fabric, on page 1](#)
- [Switch Discovery, on page 4](#)
- [Graceful Insertion and Removal \(GIR\) Mode, on page 12](#)

## Initializing the Fabric

### About Fabric Initialization

You can build a fabric by adding switches to be managed by the APIC and then validating the steps using the GUI, the CLI, or the API.



---

**Note** Before you can build a fabric, you must have already created an APIC cluster over the out-of-band network.

---

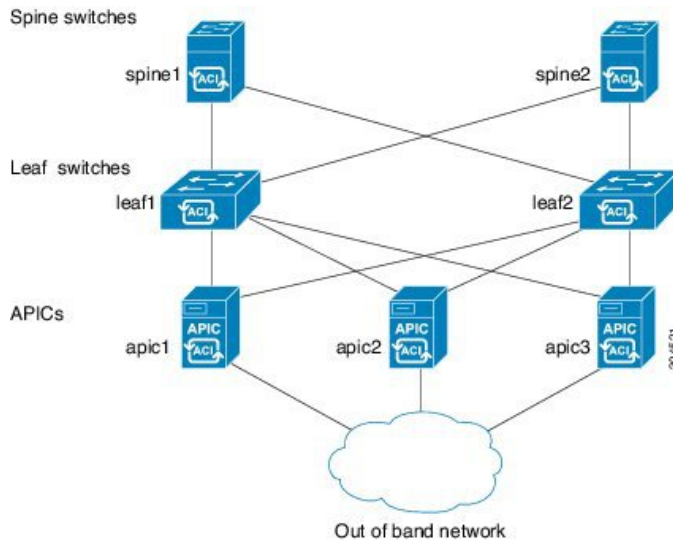
### Fabric Topology (Example)

An example of a fabric topology is as follows:

- Two spine switches (spine1, spine2)
- Two leaf switches (leaf1, leaf2)
- Three instances of APIC (apic1, apic2, apic3)

The following figure shows an example of a fabric topology.

Figure 1: Fabric Topology Example



### Connections: Fabric Topology

An example of the connection details for the fabric topology is as follows:

| Name   | Connection Details   |
|--------|--|
| leaf1  | eth1/1 = apic1 (eth2/1)<br>eth1/2 = apic2 (eth2/1)<br>eth1/3 = apic3 (eth2/1)<br>eth1/49 = spine1 (eth5/1)<br>eth1/50 = spine2 (eth5/2)    |
| leaf2  | eth1/1 = apic1 (eth 2/2)<br>eth1/2 = apic2 (eth 2/2)<br>eth1/3 = apic3 (eth 2/2)<br>eth1/49 = spine2 (eth5/1)<br>eth1/50 = spine1 (eth5/2) |
| spine1 | eth5/1 = leaf1 (eth1/49)<br>eth5/2 = leaf2 (eth1/50)   |
| spine2 | eth5/1 = leaf2 (eth1/49)<br>eth5/2 = leaf1 (eth1/50)   |

### Multi-Tier Fabric Topology (Example)

3-tier Core-Aggregation-Access architectures are common in data center network topologies. As of the Cisco APIC Release 4.1(1), you can create a multi-tier ACI fabric topology that corresponds to the

Core-Aggregation-Access architecture, thus mitigating the need to upgrade costly components such as rack space or cabling. The addition of a tier-2 leaf layer makes this topology possible. The tier-2 leaf layer supports connectivity to hosts or servers on the downlink ports and connectivity to the leaf layer (aggregation) on the uplink ports.

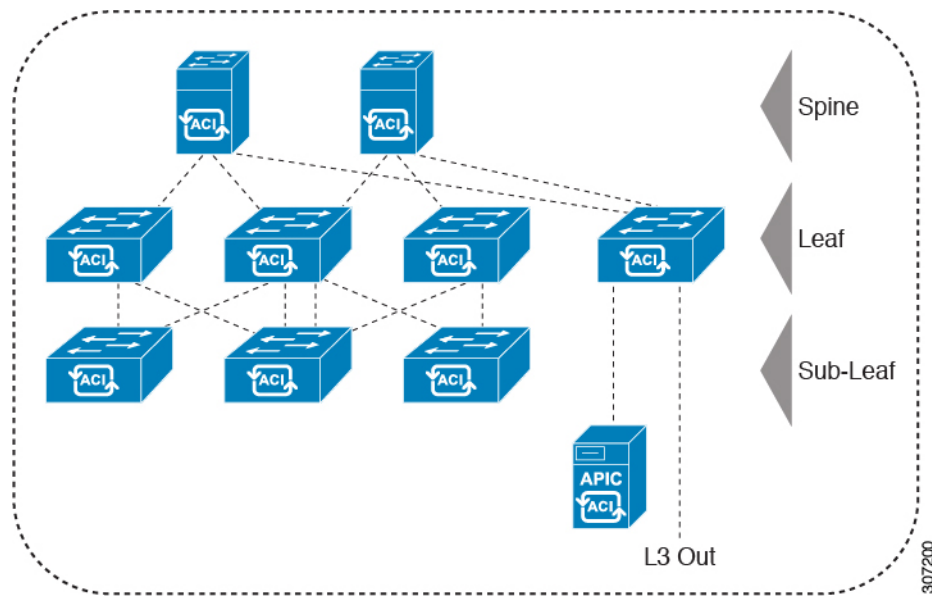
In the multi-tier topology, the leaf switches initially have uplink connectivity to the spine switches and downlink connectivity to the tier-2 leaf switches. To make the entire topology an ACI fabric, all ports on the leaf switches connecting to tier-2 leaf fabric ports must be configured as fabric ports (if not already using the default fabric ports). After APIC discovers the tier-2 leaf switch, you can change the downlink port on the tier-2 leaf to a fabric port and connect to an uplink port on the middle layer leaf.



**Note** If you are not using the default fabric ports to connect leaf switches to tier-2 leaf, you must convert the leaf ports from downlink to uplink (leaf switch reload required). For more information about changing port connectivity, see the Access Interfaces chapter of the *Cisco APIC Layer 2 Networking Configuration Guide*.

The following figure shows an example of a multi-tier fabric topology.

**Figure 2: Multi-Tier Fabric Topology Example**



While the topology in the above image shows the Cisco APIC and L3Out/EPG connected to the leaf aggregation layer, the tier-2 leaf access layer also supports connectivity to APICs and L3Out/EPGs.



**Note** Only Cisco Nexus 9000 Series switches with model numbers that end in EX, and later are supported as tier-2 leaf switches and as leaf switches, if there are tier-2 leaf switches attached to them. See the table below. Tier-2 leaf switches attached to remote leaf switches are not supported.

Table 1: Supported Switches and Port Speeds for Multi-Tier Architecture

| Switch                          | Maximum supported downlink port <sup>1</sup> (as tier-2 leaf) | Maximum supported fabric ports (as tier-2 leaf) | Maximum supported fabric ports (as tier-1 leaf) |
|---------------------------------|---|---|---|
| Nexus 93180YC-EX                | 48x1/10/25-Gbps<br>4x40/100-Gbps                              | 48 x 10/25-Gbps<br>6 x 40/100-Gbps              | 48 x 10/25-Gbps<br>6 x 40/100-Gbps              |
| Nexus 93108TC-EX                | 48x100M/1/10G BASE-T<br>4x40/100-Gbps                         | 6 x 40/100-Gbps                                 | 6 x 40/100-Gbps                                 |
| N9K-9348GC-FXP <sup>**</sup>    | 48 x 100M/1G BASE-T   | 4 x 10/25-Gbps<br>2 x 40/100-Gbps               | 4 x 10/25-Gbps<br>2 x 40/100-Gbps               |
| N9K-93180YC-FX                  | 48 x 1/10/25-Gbps<br>4x40/100-Gbps                            | 48 x 10/25-Gbps<br>6 x 40/100-Gbps              | 48 x 10/25-Gbps<br>6 x 40/100-Gbps              |
| N9K-93108TC-FX                  | 48 x 100M/1/10G BASE-T<br>4x40/100-Gbps                       | 6 x 40/100-Gbps                                 | 6 x 40/100-Gbps                                 |
| N9K-93240YC-FX2                 | 48x1/10/25-Gbps<br>10x40/100-Gbps                             | 48x1/10/25-Gbps<br>12x40/100-Gbps               | 48x10/25-Gbps fiber ports<br>12x40/100-Gbps     |
| N9K-C9336C-FX2                  | 34 x 40/100-Gbps  | 36 x 40/100-Gbps                                | 36 x 40/100-Gbps                                |
| N9K-C93216TC-FX2 <sup>***</sup> | 96 x 10G BASE-T<br>10 x 40/100-Gbps                           | 12 x 40/100-Gbps                                | 12 x 40/100-Gbps                                |
| N9K-C93360YC-FX2 <sup>***</sup> | 96 x 10/25-Gbps<br>10 x 40/100-Gbps                           | 52 x 10/25Gbps<br>12 x 40/100Gbps               | 52 x 10/25Gbps<br>12 x 40/100Gbps               |
| N9K-C9364C-GX                   | 62 x 40/100-Gbps  | 62 x 40/100-Gbps                                | 62 x 40/100-Gbps                                |

\* Last 2 original fabric ports cannot be used as downlink ports.

\*\* If tier-2 leaf does not require much bandwidth, it can be used as tier-1 though it has fewer fiber ports. Copper port cannot be used as a fabric port.

\*\*\* Supported beginning with Cisco APIC Release 4.1(2).

## Switch Discovery

### About Switch Discovery with the APIC

The APIC is a central point of automated provisioning and management for all the switches that are part of the ACI fabric. A single data center might include multiple ACI fabrics; each data center might have its own

APIC cluster and Cisco Nexus 9000 Series switches that are part of the fabric. To ensure that a switch is managed only by a single APIC cluster, each switch must be registered with that specific APIC cluster that manages the fabric.

The APIC discovers new switches that are directly connected to any switch it currently manages. Each APIC instance in the cluster first discovers only the leaf switch to which it is directly connected. After the leaf switch is registered with the APIC, the APIC discovers all spine switches that are directly connected to the leaf switch. As each spine switch is registered, that APIC discovers all the leaf switches that are connected to that spine switch. This cascaded discovery allows the APIC to discover the entire fabric topology in a few simple steps.

## Switch Registration with the APIC Cluster

After a switch is registered with the Cisco Application Policy Infrastructure Controller (APIC), the switch is part of the Cisco APIC-managed fabric inventory. With the Cisco Application Centric Infrastructure (ACI) fabric, the Cisco APIC is the single point of provisioning, management, and monitoring for switches in the infrastructure.

The following guidelines and limitations apply:

- Before you begin registering a switch, make sure that all switches in the fabric are physically connected and booted in the desired configuration. For information about the installation of the chassis, see <http://www.cisco.com/c/en/us/support/cloud-systems-management/application-policy-infrastructure-controller-apic/products-installation-guides-list.html>.
- The infrastructure IP address range must not overlap with other IP addresses used in the ACI fabric for in-band and out-of-band networks.
- When a switch is power cycled or upgraded, downlink interfaces will be in the admin-down state until the switch can download the configurations again from the Cisco APICs to prevent external devices from sending traffic to the switch that is not yet ready. Fabric links and down links for Cisco APIC connectivity are exempt from being changed to the admin-down state. To achieve this exemption, the leaf switch remembers the downlink interface that was connected to the Cisco APICs prior to the power cycle or upgrade. Because of this, you must not change the Cisco APIC connectivity until the switches are fully operational again after the power cycle or upgrade.

## Registering an Unregistered Switch Using the GUI



---

**Note** The infrastructure IP address range must not overlap with other IP addresses used in the ACI fabric for in-band and out-of-band networks.

---

### Before you begin

Make sure that all switches in the fabric are physically connected and booted.

### Procedure

- 
- Step 1** On the menu bar, navigate to **Fabric > Inventory > Fabric Membership**.
- Step 2** In the **Fabric Membership** work pane, click the **Nodes Pending Registration** tab.

Switches in the **Nodes Pending Registration** tab table can have the following conditions:

- A newly discovered but unregistered node has a node ID of 0 and has no IP address.
- A manually entered (in APIC) but unregistered switch has an original status of **Undiscovered** until it is physically connected to the network. Once connected, the status changes to **Discovered**.

**Step 3** In the **Nodes Pending Registration** table, locate a switch with an ID of 0 or a newly connected switch with the serial number you want to register.

**Step 4** Right-click the leaf switch row, select **Register**, and perform the following actions:

- Verify the displayed Serial Number to determine which switch is being added.
- Configure or edit the following settings:

| Field              | Setting   |
|--------------------|---|
| <b>Pod ID</b>      | Identifier of the pod where the node is located.  |
| <b>Node ID</b>     | <p>A number greater than 100. The first 100 IDs are reserved for APIC appliance nodes.</p> <p><b>Note</b> We recommend that leaf nodes and spine nodes be numbered differently. For example, number spines in the 100 range (such as 101, 102) and number leaves in the 200 range (such as 201, 202).</p> <p><b>Note</b> After the node ID is assigned, it cannot be updated. After the node has been added to the <b>Registered Nodes</b> tab table, you can update the node name by right-clicking the table row and choosing <b>Edit Node and Rack Name</b>.</p> |
| <b>RL TEP Pool</b> | Tunnel endpoint (TEP) pool identifier for the node.   |
| <b>Role</b>        | <p>The assigned node role. The options are:</p> <ul style="list-style-type: none"> <li>• tier-2 leaf</li> <li>• leaf</li> <li>• remote leaf</li> <li>• spine</li> <li>• unspecified</li> </ul>  |
| <b>Node Name</b>   | The node name, such as leaf1 or spine3.   |
| <b>Rack Name</b>   | The name of the rack in which the node is installed. Select Default or select <b>Create Rack</b> to add a name and description.   |

- Click **Register**.

APIC assigns an IP address to the node and the node is added to the **Registered Nodes** tab table. Next and if applicable, other nodes that are connected to this node are discovered and appear in the **Nodes Pending Registration** tab table.

- Step 5** Continue to monitor the **Nodes Pending Registration** tab table. As more nodes appear, repeat these steps to register each new node until all installed nodes are registered.

## Adding a Switch Before Discovery Using the GUI

You can add a switch description before the switch is physically connected to the network by following these steps:

### Before you begin

Make sure that you know the serial number of the switch.

### Procedure

- Step 1** On the menu bar, choose **Fabric > Inventory**.
- Step 2** In the Navigation pane, choose **Fabric Membership**.
- Step 3** On the **Registered Nodes** or **Nodes Pending Registration** work pane, click the Actions icon, then click **Create Fabric Node Member**.

The **Create Fabric Node Member** dialog appears.

- Step 4** Configure the following settings:

| Field                | Setting  |
|----------------------|--|
| <b>Pod ID</b>        | Identify the pod where the node is located.  |
| <b>Serial Number</b> | Required: Enter the serial number of the switch.   |
| <b>Node ID</b>       | <p>Required: Enter a number greater than 100. The first 100 IDs are reserved for Cisco Application Policy Infrastructure Controller (APIC) appliance nodes.</p> <p><b>Note</b> We recommend that you number leaf nodes and spine nodes differently. For example, number leaf nodes in the 100 range (such as 101, 102) and number spine nodes in the 200 range (such as 201, 202).</p> <p>After the node ID is assigned, it cannot be updated. After the node has been added to the <b>Registered Nodes</b> tab table, you can update the node name by right-clicking the table row and choosing <b>Edit Node and Rack Name</b>.</p> |
| <b>Switch Name</b>   | The node name, such as leaf1 or spine3.  |

| Field                | Setting   |
|----------------------|---|
| <b>Node Type</b>     | <p>Choose the type (role) for the node. The options are:</p> <ul style="list-style-type: none"> <li>• <b>leaf</b></li> </ul> <p>Put a check in one of the following boxes if applicable:</p> <ul style="list-style-type: none"> <li>• <b>Is Remote:</b> Specifies that the node is a remote leaf switch.</li> <li>• <b>Is Virtual:</b> Specifies that the node is virtual.</li> <li>• <b>Is Tier-2 Leaf:</b> The fabric node member (leaf switch) being created will take on the characteristics of a tier-2 leaf switch in a multi-tier architecture.</li> </ul> <ul style="list-style-type: none"> <li>• <b>spine</b></li> </ul> <p>Put a check in the following box if applicable:</p> <ul style="list-style-type: none"> <li>• <b>Is Virtual:</b> Specifies that the node is virtual.</li> </ul> <ul style="list-style-type: none"> <li>• <b>unknown</b></li> </ul> |
| <b>VPC Pair</b>      | Optional. If the node is part of a vPC pair, choose the ID of the node with which to pair this node.  |
| <b>VPC Domain ID</b> | Enter the vPC domain ID for the vPC pair. The range is from 1 to 1000. This field only appears if you entered a value for <b>VPC Pair</b> , and is required in that case.   |

The Cisco APIC adds the new node to the **Nodes Pending Registration** tab table.

### What to do next

Connect the physical switch to the network. Once connected, the Cisco APIC matches the serial number of the physical switch to the new entry. Monitor the **Nodes Pending Registration** tab table until the **Status** for the new switch changes from **Undiscovered** to **Discovered**. Follow the steps in the [Registering an Unregistered Switch Using the GUI, on page 5](#) section to complete the fabric initialization and discovery process for the new switch.

## Switch Discovery Validation and Switch Management from the APIC

After the switches are registered with the APIC, the APIC performs fabric topology discovery automatically to gain a view of the entire network and to manage all the switches in the fabric topology.

Each switch can be configured, monitored, and upgraded from the APIC without having to access the individual switches.



## Validating the Registered Switches Using the GUI

### Procedure

---

- Step 1** On the menu bar, navigate to **Fabric > Inventory > Fabric Membership**.
- Step 2** In the **Fabric Membership** work pane, click the **Registered Nodes** tab.  
The switches in the fabric are displayed in the **Registered Nodes** tab table with their node IDs. In the table, all the registered switches are displayed with the IP addresses that are assigned to them.
- 


## Validating the Fabric Topology

After all the switches are registered with the APIC cluster, the APIC automatically discovers all the links and connectivity in the fabric and discovers the entire topology as a result.

## Validating the Fabric Topology Using the GUI

### Procedure

---

- Step 1** On the menu bar, navigate to **Fabric > Inventory > Pod *number***.
- Step 2** In the **Work** pane, click the **Topology** tab.  
The displayed diagram shows all attached switches, APIC instances, and links.
- Step 3** (Optional) Hover over any component to view its health, status, and inventory information.
- Step 4** (Optional) To view the port-level connectivity of a leaf switch or spine switch, double-click its icon in the topology diagram.
- Step 5** (Optional) To refresh the topology diagram, click the  icon in the upper right corner of the **Work** pane.
- 

## Unmanaged Switch Connectivity in VM Management

The hosts that are managed by the VM controller (for example, a vCenter), can be connected to the leaf port through a Layer 2 switch. The only prerequisite required is that the Layer 2 switch must be configured with a management address, and this management address must be advertised by Link Layer Discovery Protocol (LLDP) on the ports that are connected to the switches. Layer 2 switches are automatically discovered by the APIC, and they are identified by the management address. To view the unmanaged switches in APIC, navigate to **Fabric > Inventory > Fabric Membership** and click the **Unmanaged Fabric Nodes** tab.

## Troubleshooting Switch Discovery Issues

The ACI-mode switch software includes a comprehensive leaf and spine switch discovery validation program. The validation program is launched with a switch CLI command when a switch is stuck in the discovery mode.

The validation program performs the following tests:

1. System state—Checks the state of the `topSystem` managed object (MO).
  - a. If the state is "out-of-service," checks for any scheduled upgrades.
  - b. If the state is "downloading bootscript," a failure has occurred in the downloading bootscript. The failure is reported. If the switch is an L3out spine, the program additionally checks the bootstrap download state and reports any failure.
2. DHCP status—Checks for DHCP status and information, such as the TEP IP, node Id, and name assigned from the `dhcpResp` MO.
3. AV details—Checks whether the APICs are registered and whether they have valid IP addresses.
4. IP reachability—Uses the **iping** command to verify IP reachability to the address assigner APIC. To retest this condition, use the **show discoveryissues apic ipaddress** command.
5. infra VLAN received—Checks for the presence of the infra VLAN details in the `lldpInst` MO. If this switch belongs to a pod that has no APIC, no infra VLAN details are present, and this section of the test result can be ignored.
6. LLDP adjacency—Checks for the presence of LLDP adjacencies and for any wiring mismatch issues. LLDP issues can generate fault reports such as infra VLAN mismatch, chassis ID mismatch, or no connection to the front end ports.
7. Switch version—Reports the running firmware version of the switch. Also reports the version of the APIC, if available.
8. FPGA/BIOS—Checks for any FPGA/BIOS version mismatch on the switch.
9. SSL validation—Checks for validity of the SSL certificate details using the **acidiag verifyssl -s serialNumber** command.
10. Policy downloads—Checks the `pconsBootStrap` MO to see whether registration to APIC (PM shards) is complete and whether all policies were downloaded successfully.
11. Time—Reports the current time on the switch.
12. Hardware status—Checks the module, power, and fan status from the `eqptCh`, `eqptFan`, `eqptPsu`, `eqptFt` and `eqptLC` MOs.

### Running the Test Manually

To run the switch discovery validation program, log in to the spine or leaf switch CLI console and execute the following command:

```
show discoveryissues [apic ipaddress]
```

### Example of a Successful Test

The following example shows the switch discovery validation program output for a successful test.

```
spine1# show discoveryissues

Checking the platform type.....SPINE!
Check01 - System state - in-service [ok]
```

```

Check02 - DHCP status [ok]
        TEP IP: 10.0.40.65 Node Id: 106 Name: spine1
Check03 - AV details check [ok]
Check04 - IP reachability to apic [ok]
        Ping from switch to 10.0.0.1 passed
Check05 - infra VLAN received [ok]
        infra vLAN:1093
Check06 - LLDP Adjacency [ok]
        Found adjacency with LEAF
Check07 - Switch version [ok]
        version: n9000-14.2(0.167) and apic version: 5.0(0.25)
Check08 - FPGA/BIOS out of sync test [ok]
Check09 - SSL check [check]
        SSL certificate details are valid
Check10 - Downloading policies [ok]
Check11 - Checking time [ok]
        2019-08-21 17:15:45
Check12 - Checking modules, power and fans [ok]

```

### Example of a Failed Test

The following example shows the switch discovery validation program output for a switch with discovery issues.

```

spine1# show discoveryissues

Checking the platform type.....SPINE!
Check01 - System state - out-of-service [FAIL]
        Upgrade status is notscheduled
        Node upgrade is notscheduled state
Check02 - DHCP status [FAIL]
        ERROR: discover not being sent by switch
        Ignore this, if the IP is already known by switch
        ERROR: node Id not configured
        ERROR: Ip not assigned by dhcp server
        ERROR: Address assigner's IP not populated
        TEP IP: unknown Node Id: unknown Name: unknown
Check03 - AV details check [ok]
Check04 - IP reachability to apic [FAIL]
        please rerun the CLI with argument apic Ip
        (show discoveryissues apic <ip>) to check its reachability from switch
Check05 - infra VLAN received [FAIL]
        Please ignore if this switch is part of a pod with no apic
Check06 - LLDP Adjacency [FAIL]
        Error: spine not connected to any leaf
Check07 - Switch version [ok]
        version: n9000-14.2(0.146) and apic version: unknown
Check08 - FPGA/BIOS out of sync test [ok]
Check09 - SSL check [ok]
        SSL certificate details are valid
Check10 - Downloading policies [FAIL]
        Registration to all PM shards is not complete
        Policy download is not complete
        Pcons bootstrap is in triggered state
Check11 - Checking time [ok]
        2019-07-17 19:26:29
Check12 - Checking modules, power and fans [FAIL]
        Line card state is testing

```

## Finding Your Switch Inventory Using the GUI

This section explains how to find your switch model and serial numbers using the Cisco APIC GUI.

### Before you begin

You must have access to the Cisco APIC GUI

### Procedure

---

- Step 1** On the menu bar, choose **Fabric > Inventory**.
  - Step 2** In the navigation pane, click a **Pod** icon.  
Your switch icons appear in the navigation pane.
  - Step 3** In the navigation pane, click on a switch icon.  
A list of tabs appears at the top of the work pane.
  - Step 4** Click the **General** tab.  
Your switch information appears in the work pane.
- 

## Graceful Insertion and Removal (GIR) Mode

### Maintenance Mode

Following are terms that are helpful to understand when using maintenance mode:

- **Maintenance mode**: Used to isolate a switch from user traffic for debugging purposes. You can put a switch in **maintenance mode** by enabling the **Maintenance (GIR)** field in the **Fabric Membership** page in the APIC GUI, located at **Fabric > Inventory > Fabric Membership** (right-click on a switch and choose **Maintenance (GIR)**).

If you put a switch in **maintenance mode**, that switch is not considered as a part of the operational ACI fabric infra and it will not accept regular APIC communications.

You can use maintenance mode to gracefully remove a switch and isolate it from the network in order to perform debugging operations. The switch is removed from the regular forwarding path with minimal traffic disruption.

In graceful removal, all external protocols are gracefully brought down except the fabric protocol (IS-IS) and the switch is isolated from the network. During maintenance mode, the maximum metric is advertised in IS-IS within the Cisco Application Centric Infrastructure (Cisco ACI) fabric and therefore the leaf switch in maintenance mode does not attract traffic from the spine switches. In addition, all front-panel interfaces on the switch are shutdown except for the fabric interfaces. To return the switch to its fully operational (normal) mode after the debugging operations, you must recommission the switch. This operation will trigger a stateless reload of the switch.

In graceful insertion, the switch is automatically decommissioned, rebooted, and recommissioned. When recommissioning is completed, all external protocols are restored and maximum metric in IS-IS is reset after 10 minutes.

The following protocols are supported:

- Border Gateway Protocol (BGP)
- Enhanced Interior Gateway Routing Protocol (EIGRP)
- Intermediate System-to-Intermediate System (IS-IS)
- Open Shortest Path First (OSPF)
- Link Aggregation Control Protocol (LACP)

Protocol Independent Multicast (PIM) is not supported.

### Important Notes

- If a border leaf switch has a static route and is placed in maintenance mode, the route from the border leaf switch might not be removed from the routing table of switches in the ACI fabric, which causes routing issues.

To work around this issue, either:

- Configure the same static route with the same administrative distance on the other border leaf switch, or
  - Use IP SLA or BFD for track reachability to the next hop of the static route
- While the switch is in maintenance mode, the Ethernet port module stops propagating the interface related notifications. As a result, if the remote switch is rebooted or the fabric link is flapped during this time, the fabric link will not come up afterward unless the switch is manually rebooted (using the **acdiag touch clean** command), decommissioned, and recommissioned.
  - While the switch is in maintenance mode, CLI 'show' commands on the switch show the front panel ports as being in the up state and the BGP protocol as up and running. The interfaces are actually shut and all other adjacencies for BGP are brought down, but the displayed active states allow for debugging.
  - For multi-pod / multi-site, **IS-IS metric for redistributed routes** should be set to less than 63 to minimize the traffic disruption when bringing the node back into the fabric. To set the **IS-IS metric for redistributed routes**, choose **Fabric > Fabric Policies > Pod Policies > IS-IS Policy**.
  - Existing GIR supports all Layer 3 traffic diversion. With LACP, all the Layer 2 traffic is also diverted to the redundant node. Once a node goes into maintenance mode, LACP running on the node immediately informs neighbors that it can no longer be aggregated as part of port-channel. All traffic is then diverted to the vPC peer node.
  - The following operations are not allowed in maintenance mode:
    - **Upgrade**: Upgrading the network to a newer version
    - **Stateful Reload**: Restarting the GIR node or its connected peers
    - **Stateless Reload**: Restarting with a clean configuration or power-cycle of the GIR node or its connected peers
    - **Link Operations**: Shut / no-shut or optics OIR on the GIR node or its peer node
    - **Configuration Change**: Any configuration change (such as clean configuration, import, or snapshot rollback)

- **Hardware Change:** Any hardware change (such as adding, swapping, removing FRU's or RMA)

## Removing a Switch to Maintenance Mode Using the GUI

Use this procedure to remove a switch to maintenance mode using the GUI. During the removal of a switch to maintenance mode, the out-of-band management interfaces will remain up and accessible.

### Procedure

---

- Step 1** On the menu bar, choose **Fabric > Inventory**.
- Step 2** In the navigation pane, click **Fabric Membership**.
- Step 3** In the **Registered Nodes** table in the work pane, right-click the row of the switch to be removed to maintenance mode and select **Maintenance (GIR)**.
- Step 4** Click **OK**.
- The gracefully removed switch displays **Maintenance** in the **Status** column.
- 

## Inserting a Switch to Operational Mode Using the GUI

Use this procedure to insert a switch to operational mode using the GUI.

### Procedure

---

- Step 1** On the menu bar, choose **Fabric > Inventory**.
- Step 2** In the navigation pane, click **Fabric Membership**.
- Step 3** In the **Registered Nodes** table in the work pane, right-click the row of the switch to be inserted to operational mode and select **Commision**.
- Step 4** Click **Yes**.
-