



## **Cisco ACI Multi-Site Hardware Requirements Guide, Release 2.1(x)**

[New and Changed Information](#) 2

Revised: November 21, 2019,

## New and Changed Information

The following table provides an overview of the significant changes up to this current release.

**Table 1: New and Changed Information in the Cisco ACI Multi-Site Hardware Requirements Guide**

Cisco ACI Multi-Site Release Version	Description
Release 2.1(1)	Added support for the N9K-X9736Q-FX line card for Cisco Nexus 95xx spine switches.

## Hardware Requirements

### Spine Switch Requirements

Cisco ACI Multi-Site requires the following ACI-mode spine switches:

- Cisco Nexus 9500 platform switches with -EX or -FX line cards and -E or -E2 fabric modules  
Cisco Nexus 9500 platform switches with non -EX/-FX line cards or using non -E/-E2 fabric modules are not supported with Cisco ACI Multi-Site
- Cisco Nexus 9332C and 9364C switches
- Cisco Nexus 9336PQ switches for leaf-to-spine connectivity within a site only  
These switches are not supported for inter-site connectivity with Cisco ACI Multi-Site

For the list of specific switch models supported by Cisco ACI Multi-Site, see [Hardware Compatibility, on page 4](#).

### Leaf Switch Requirements

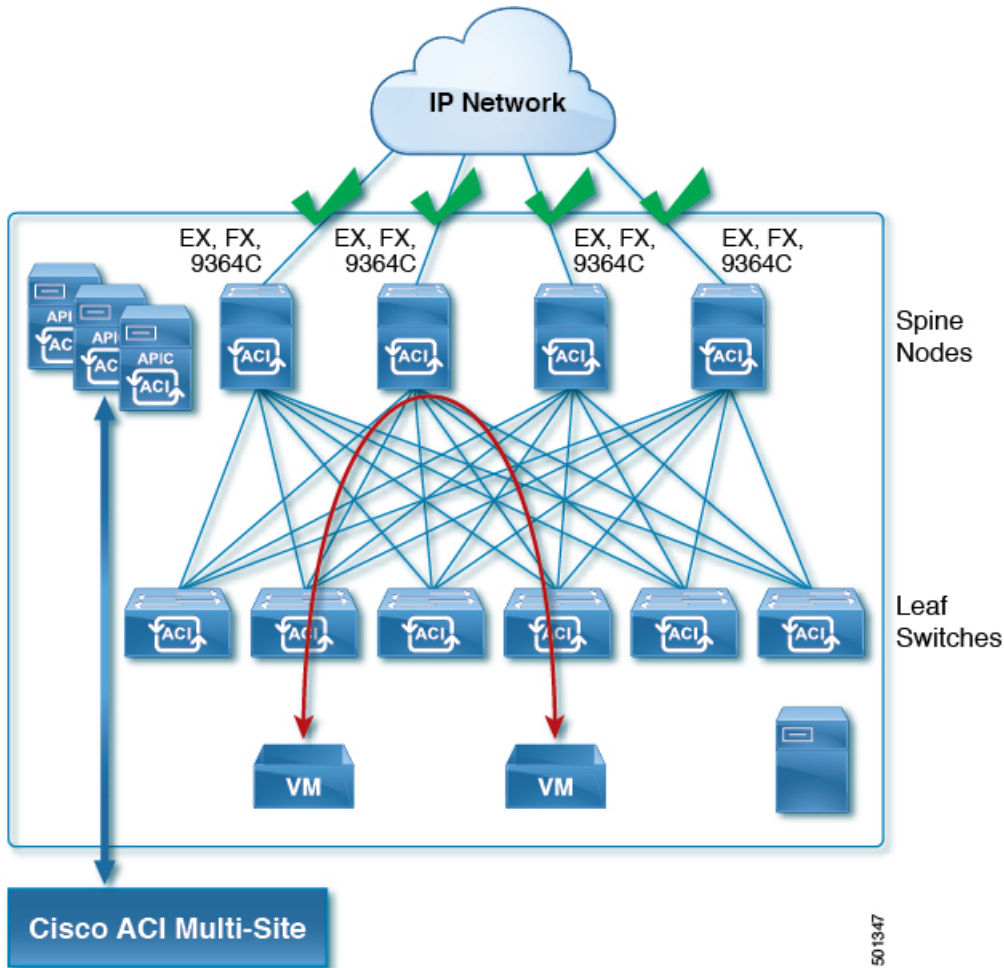
Cisco ACI Multi-Site requires the following ACI-mode leaf switches:

- Cisco Nexus 93120TX switches
- Cisco Nexus 93128TX switches
- Cisco Nexus 9332PQ switches
- Cisco Nexus 9372 platform switches
- Cisco Nexus 9396 platform switches
- Cisco Nexus 9300-EX platform switches
- Cisco Nexus 9300-FX and -FXP platform switches

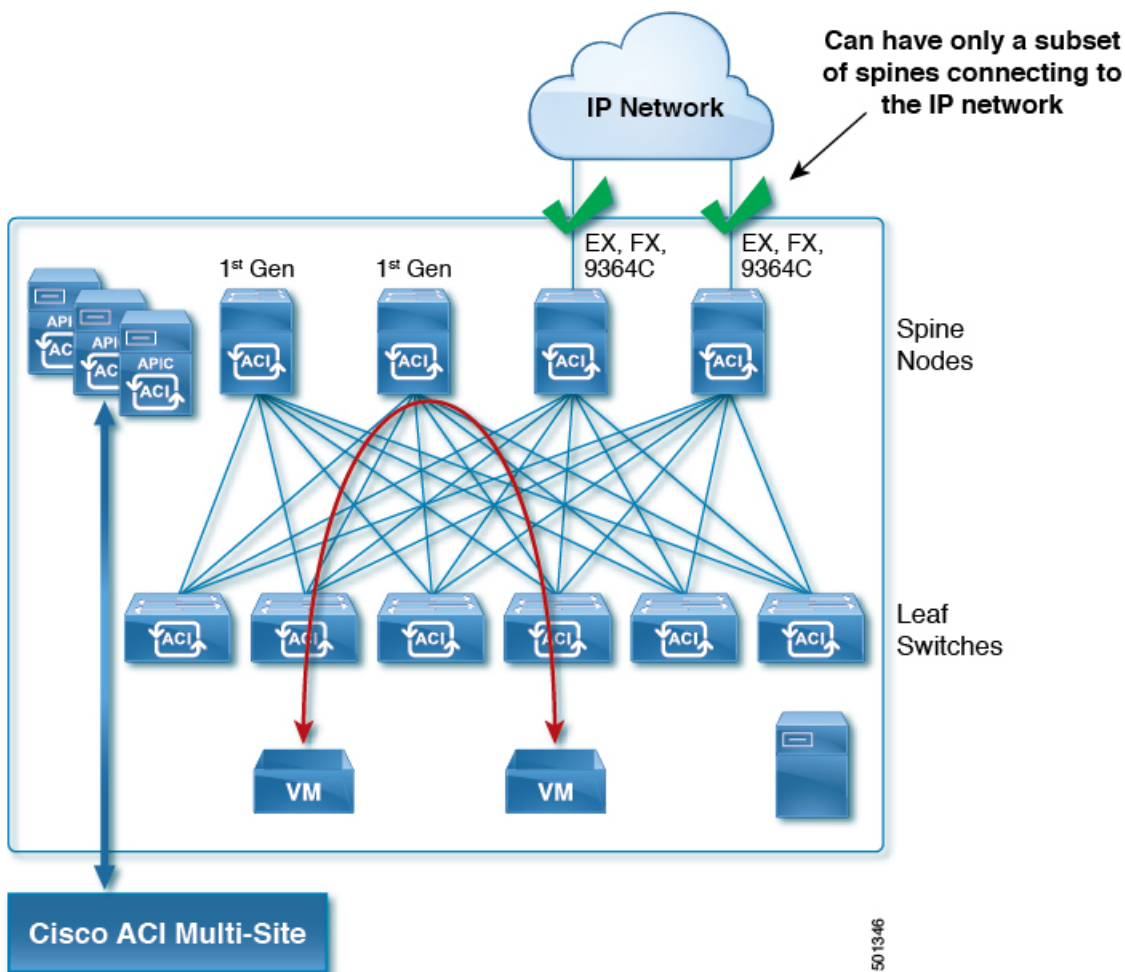
For the list of specific switch models supported by Cisco ACI Multi-Site, see [Hardware Compatibility, on page 4](#).

### IPN Connectivity Across Sites

The following figure shows how spine nodes with Cisco ACI Multi-Site supporting -EX line cards and -E fabric modules are connected to the intersite network.



Cisco ACI Multi-Site supporting spine nodes with -EX line cards can be mixed with non supporting spine nodes in the same APIC fabric but only the Cisco ACI Multi-Site supporting spine nodes can connect to the IP network as shown in the following figure.



## Hardware Compatibility

The following table lists the APIC leaf switches compatible with Cisco ACI Multi-Site.

Cisco Nexus 9000 Series Leaf Switches	PID
Cisco Nexus 93240YC-FX2	N9K-C93240YC-FX2
Cisco Nexus 93108TC-EX	N9K-C93108TC-EX
Cisco Nexus 93108TC-FX	N9K-C93108TC-FX
Cisco Nexus 93120TX	N9K-C93120TX
Cisco Nexus 93128TX	N9K-C93128TX
Cisco Nexus 93180LC-EX	N9K-C93180LC-EX
Cisco Nexus 93180YC-EX	N9K-C93180YC-EX
Cisco Nexus 93180YC-FX	N9K-C93180YC-FX

<b>Cisco Nexus 9000 Series Leaf Switches</b>	<b>PID</b>
Cisco Nexus 9332PQ	N9K-C9332PQ
Cisco Nexus 9336C-FX2	N9K-C9336C-FX2
Cisco Nexus 9348GC-FXP	N9K-C9348GC-FXP
Cisco Nexus 9372PX	N9K-C9372PX
Cisco Nexus 9372PX-E	N9K-C9372PX-E
Cisco Nexus 9372TX	N9K-C9372TX-E
Cisco Nexus 9372TX-E	N9K-C9372TX-E
Cisco Nexus 9396PX	N9K-C9396PX
Cisco Nexus 9396TX	N9K-C9396TX

The following table lists the APIC spine switches, modules, and line cards compatible with Cisco ACI Multi-Site.

<b>Cisco Nexus 9000 Series Spine Switches</b>	<b>PID</b>	<b>Line Cards</b>	<b>Fabric Modules</b>
Cisco Nexus 9332C	N9K-C9332C	N.A.	N.A.
Cisco Nexus 9364C	N9K-C9364C	N.A.	N.A.
Cisco Nexus 9504	N9K-C9504	N9K-X9732C-EX N9K-X9736C-FX N9K-X9736Q-FX	N9K-C9504-FM-E
Cisco Nexus 9508	N9K-C9508	N9K-X9732C-EX N9K-X9736C-FX N9K-X9736Q-FX	N9K-C9508-FM-E N9K-C9508-FM-E2
Cisco Nexus 9516	N9K-C9516	N9K-X9732C-EX N9K-X9736C-FX N9K-X9736Q-FX	N9K-C9516-FM-E2





**Americas Headquarters**  
Cisco Systems, Inc.  
San Jose, CA 95134-1706  
USA

**Asia Pacific Headquarters**  
CiscoSystems(USA)Pte.Ltd.  
Singapore

**Europe Headquarters**  
CiscoSystemsInternationalBV  
Amsterdam,TheNetherlands

Cisco has more than 200 offices worldwide. Addresses, phone numbers, and fax numbers are listed on the Cisco Website at [www.cisco.com/go/offices](http://www.cisco.com/go/offices).