



## Set Up Branch Sites

---

After specifying the settings in previous sections [Configure Hub Site and Settings, page 4-1](#), select “Set up Branch Sites” to provision the branch sites.

The Provisioning Site window appears.

- [Bootstrap, page 5-1](#)
- [Sites, page 5-1](#)
- [Devices, page 5-1](#)

### Bootstrap

Select a bootstrap file to download. You can use this bootstrap file on each branch router for the MPLS interface WAN. Also see “PnP Bootstrapping” in the Release Notes for IWAN on APIC-EM (See Related Documentation).

### Sites

The site host names determine the nearest city to the router and uses this as the basis for the name as well as additional information such as the router model and a suffix number. For example, “San Jose\_4431\_1”. To change the site name, see [Edit site name and location, page 5-3](#).

### Devices

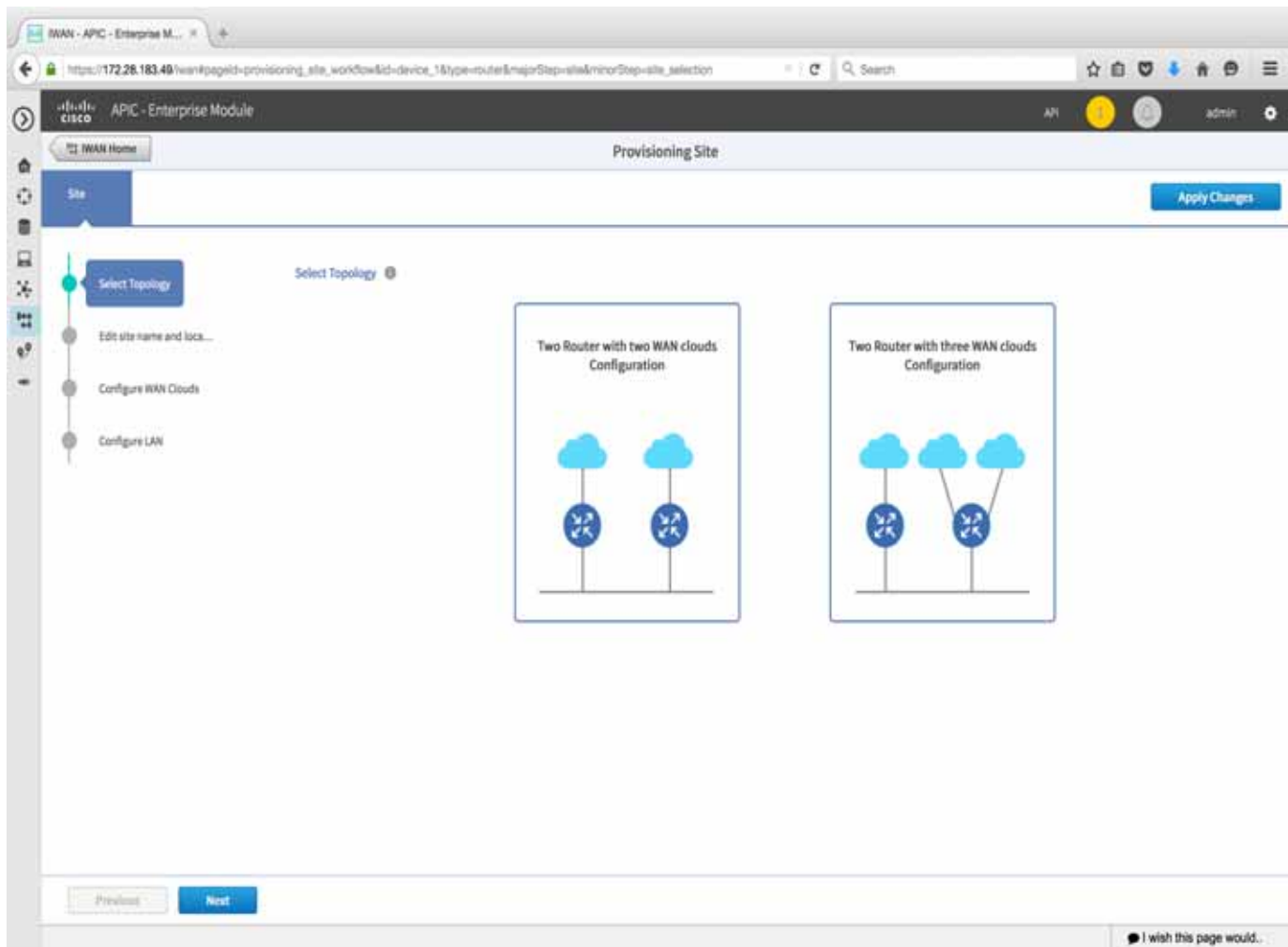
1. Select **Devices** to show a list of devices with serial number, type (e.g Cisco ISR 4451), site name (e.g San Jose).
2. Select devices that you want to provision for a site. (these could include the unclaimed devices )  
**Note** If two devices are selected, they must be from the same site.
3. Click **Provision Site**.

Next, to provision the site, follow the tasks shown on the left side of the window, starting with “Select Topology” and ending with “Site Summary”.

- [Select Topology, page 5-2](#)
- [Edit site name and location, page 5-3](#)

- [Configure WAN Clouds, page 5-3](#)
- [Configure LAN, page 5-5](#)
- [Site Summary, page 5-6](#)

## Select Topology



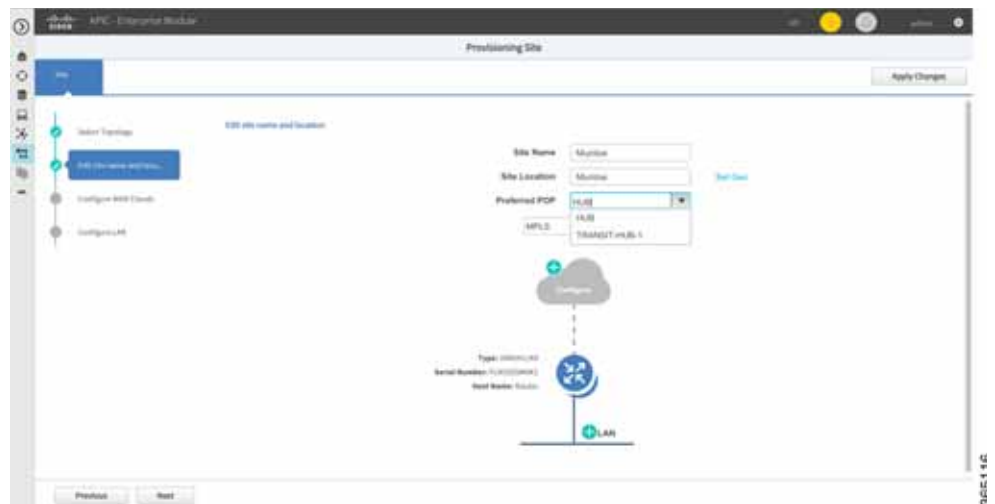
Select one of the WAN topologies that are shown in the window.



### Note

The Two Router Configuration option only appears if two devices were selected previously—see [Devices, page 5-1](#) above.

## Edit site name and location



Field	Description
Site Name	Preset site name. Change the name if required.
Site Location	Preset location. Click <b>Set Geo</b> to specify the site location on a map.
Preferred POP	Select the preferred datacenter specified in the <b>IWAN Aggregation Site</b> .

Click “+” next to the WAN cloud of a router and select the WAN links defined for provisioning the hub.

Click **Next** or “Configure WAN Clouds” tab.

See [Configure WAN Clouds, page 5-3](#).

## Configure WAN Clouds

To configure the settings of a WAN network, click “+” of a router next to a cloud.

Configure each WAN cloud shown in the topology diagram.

1. In the text box on the left hand side, select either “inet”(Internet) or “mpls”.
2. Click “+” adjacent to the WAN cloud.

The Configure WAN Cloud dialog box appears. The fields in the dialog box are different depending on whether the WAN uses an internet or MPLS link.

- [Configure Internet WAN Cloud, page 5-4](#)
- [Configure MPLS WAN Cloud, page 5-4](#)

After entering fields for either Internet or MPLS WAN cloud, click **Next** or “Configure Lan” tab.

See [Configure LAN, page 5-5](#).

## Configure Internet WAN Cloud

For an Internet WAN cloud, a dialog box opens with the following fields.

The values for WAN Label and WAN Type fields are populated as specified in **Service Provider** tab when configuring the hub.

Field	Description
WAN Type	“Public” or “Private” appears depending on the option selected while configuring Service Providers in the <a href="#">Service Providers, page 4-9</a> task.
Interface Type	Type of interface. Values: T1, E1 or Ethernet.
Interface	Select an interface from the drop-down menu. Example: FastEthernet0/0/0
Connect to WAN	Connection method.
Upload (Mbps)	Upload bandwidth (in Mbps). Example: 25.
Download (Mbps)	Select a download bandwidth (in Mbps) from the drop-down menu. Example: 300.

## Configure MPLS WAN Cloud

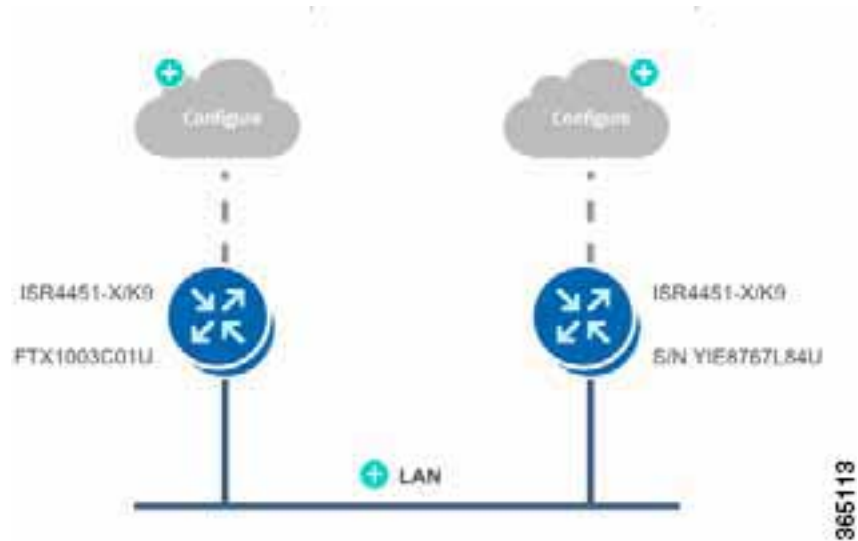
For an MPLS WAN cloud, a dialog box opens with the following fields.

The values for WAN Label and WAN Type fields are populated as specified in **Service Provider** tab when configuring the hub.

Field	Description
WAN Type	“Public” or “Private” appears depending on the option selected while configuring Service Providers in the <a href="#">Service Providers, page 4-9</a> task.
Interface Type	Type of interface. Values: T1, E1 or Ethernet.
Interface	Select an interface from the drop-down menu. The information in this field is autopopulated from the interface selected while configuring the hub. Example: FastEthernet0/0/0
Connect to WAN	Connection method.
CE IP Address	Customer Edge Server IP Address. The value for this field is autopopulated with IP if you specified static IP addresses while configuring the hub.  <b>Note</b> You may need to specify additional IP addresses for the CE devices, depending on the number of links that you created when setting up the hub sites in the <a href="#">IWAN Aggregation Site, page 4-11</a> task.
PE IP Address	Provider Edge Server IP Address. The value for this field is autopopulated with IP if you specified static IP addresses while configuring the hub.

Download and Upload (Mbps)	Select a bandwidth for upload and download (in Mbps) from the drop-down menu. Example: 100.
Service Provider	Select a Service Provider Model or QoS Model from the drop-down menu. Example: Default 6-Class Model

## Configure LAN



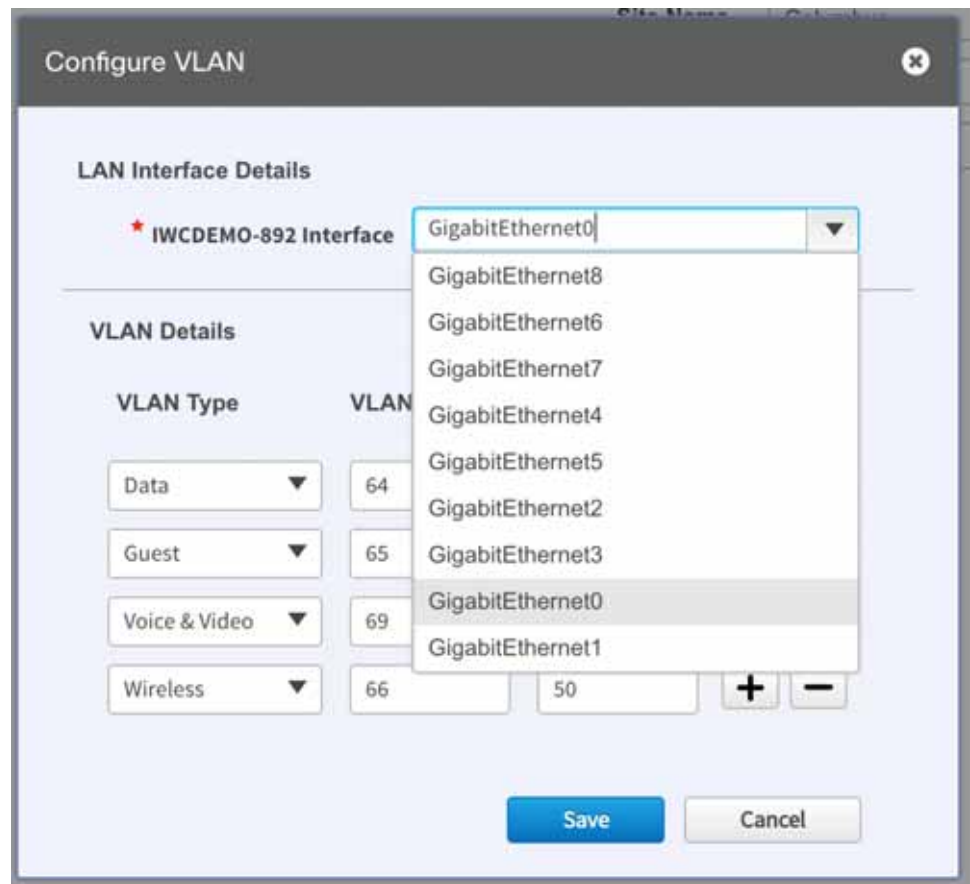
Next to the LAN, under the router, click “+” to specify the LAN attributes. If site specific IP pools are configured for this site, the **Configure VLAN** dialog displays the predefined VLANs for confirmation purposes only. You cannot edit or modify the fields in the dialog.

Cisco IWAN App provides the flexibility to bring up the IWAN on available interfaces thereby adapting to existing customer networks without any changes. You can choose any interface available on the spoke devices as the LAN interface. The available interfaces are fetched from the device and autopopulated in **Configure LAN** dialog and you can select a LAN interface when configuring the branches. You can choose any kind of interface available on your network.



### Note

If a switchport interface is chosen as a LAN interface, the interface will be configured as trunk and VLANs and interface VLANs will be created.

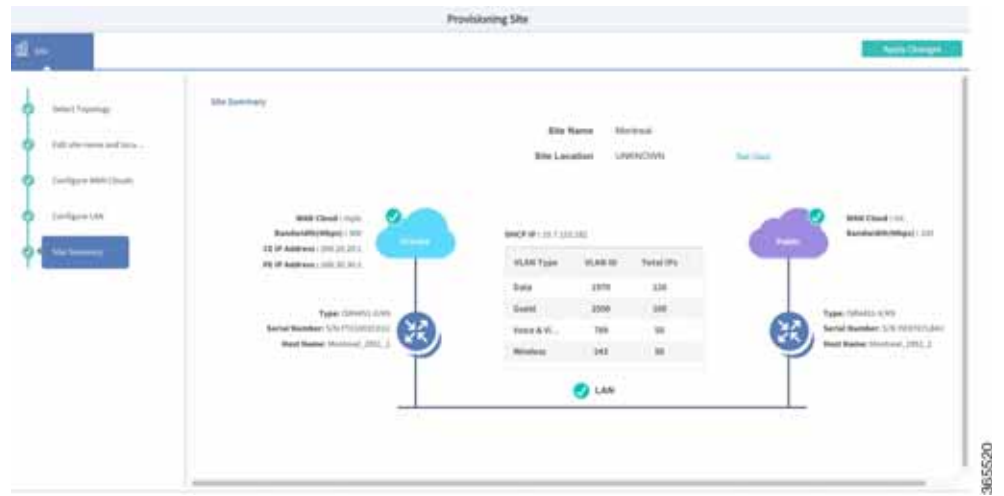


Field	Description
VLAN Type	Enter a VLAN type or select a VLAN type from the dropdown menu. Values: Data, Guest, Voice and Video, Wireless.
VLAN ID	Range of values: 1–4094. Example: 2811.
Total IPs	Number of chosen IP addresses for hosts in this VLAN. Example: 120.

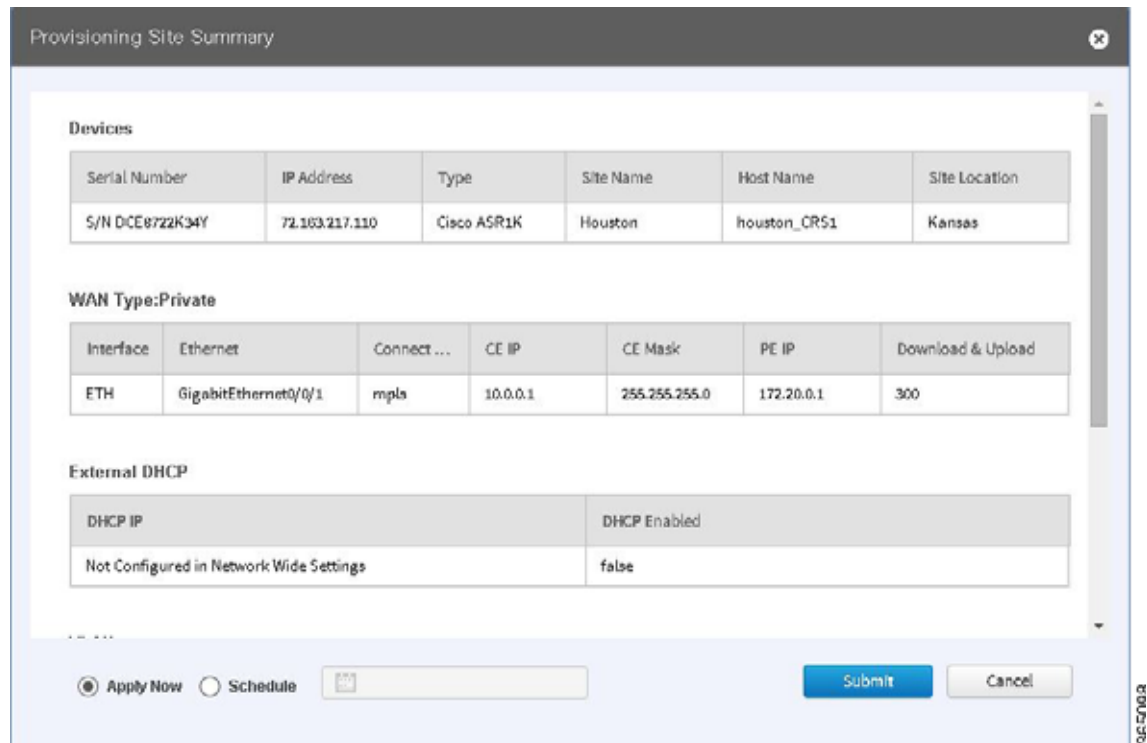
Click “+” of the lowest VLAN to add another VLAN entry in the list. After all VLANs are configured, click **Save**.

## Site Summary

A site summary such as the one shown in the following example, appears.



Click **Apply Changes** to complete provisioning of the site. The Provisioning Site Summary dialog appears.



You can either select **Apply Now** or **Schedule** to specify a date and time to apply the site provisioning by clicking **Submit**.



**Note**

The **Apply Now** option does not check for validations in conflict with future scheduled workflows. Please reevaluate scheduled jobs based on these changes and update scheduled jobs as required. If there is a conflict when the scheduled job is activated, it may fail at that time.

