



## CIMC Configuration

---

The Cisco Integrated Management Controller (CIMC) Configuration is the user interface used to manage the server. This appendix includes the following information about using the CIMC Utility to set up remote server management:

- [Using CIMC Configuration Utility, on page 1](#)

## Using CIMC Configuration Utility

After booting the server, the Cisco screen is displayed, which allows you to enter the Cisco Integrated Management Controller (CIMC) Configuration Utility. The CIMC interface can be used for remote server management.

A monitor and keyboard must be attached directly to the Secure Malware Analytics Appliance to use this utility.



---

**Note** CIMC is not supported on Secure Malware Analytics M5 Appliance servers.

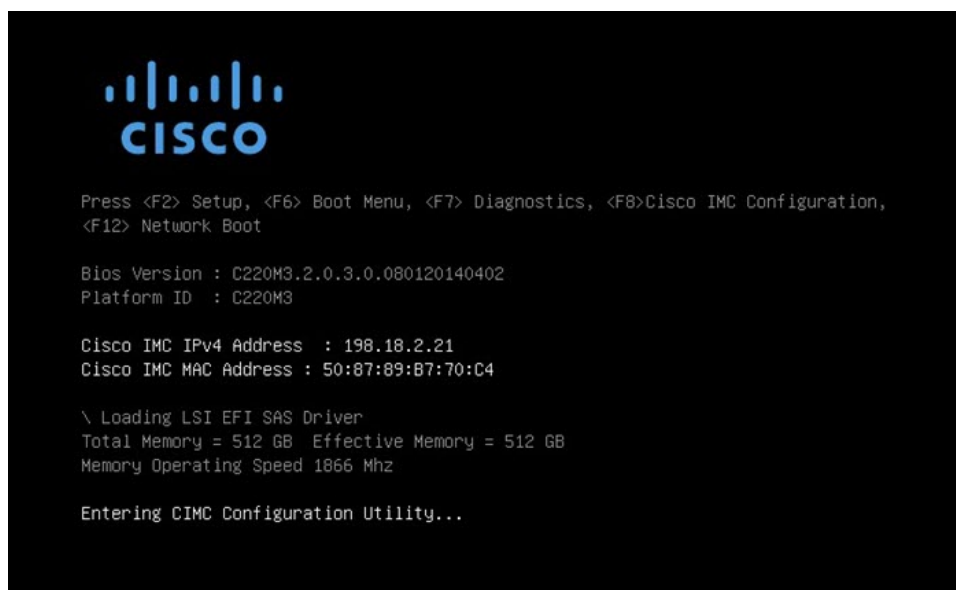
---

### Procedure

---

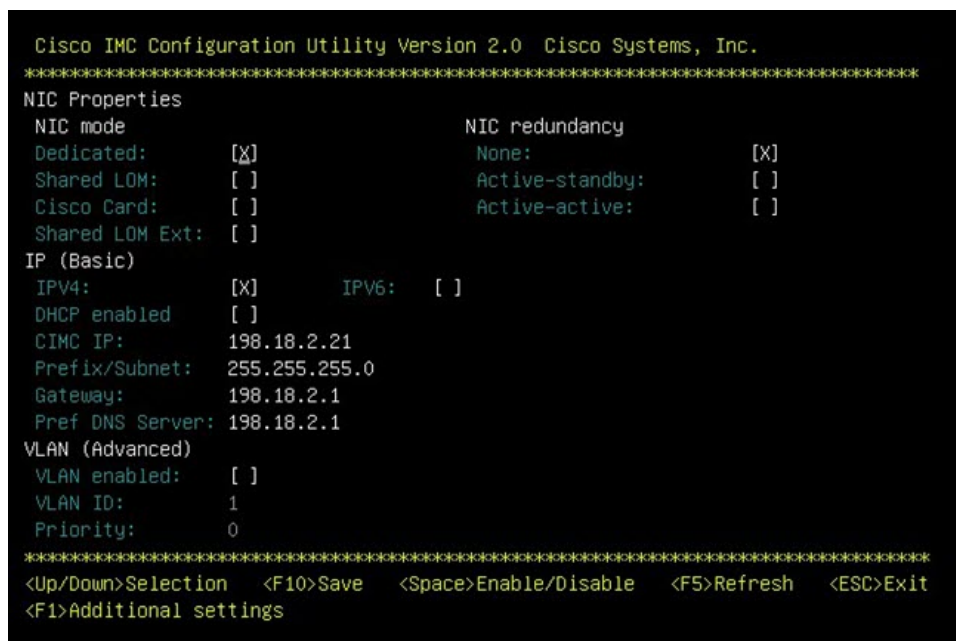
**Step 1** Power on the server.

Figure 1: Cisco Screen



**Step 2** After the memory check is completed, press **F8** to enter the CIMC Configuration Utility.

Figure 2: CIMC Configuration Utility



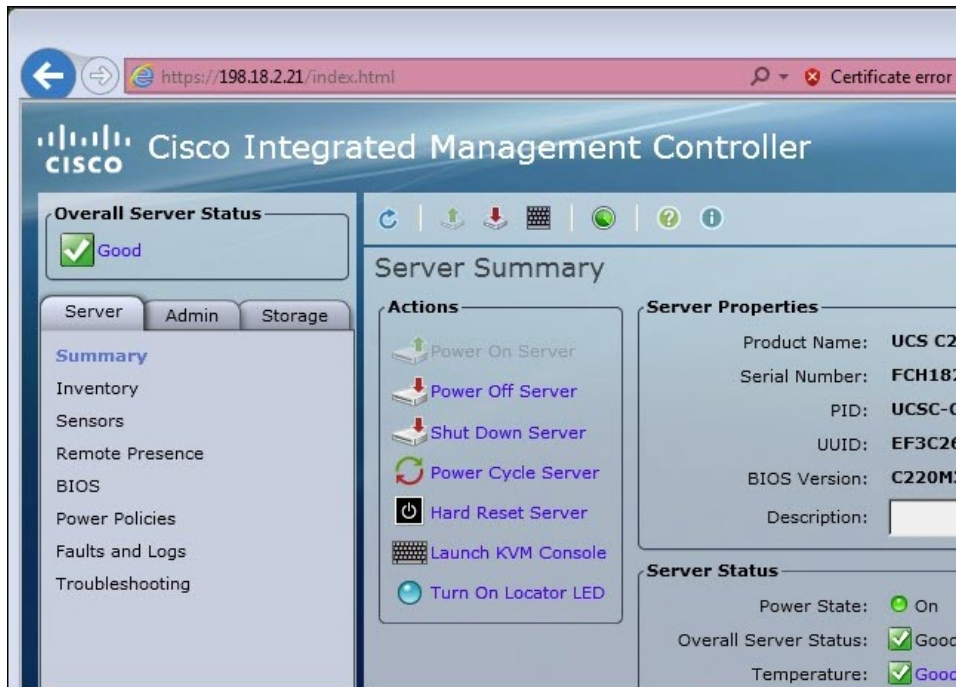
**Step 3** In the CIMC configuration utility, set up an IP address that can be used for remote server management.

**Step 4** Save the configuration and exit the utility.

**Step 5** In a web browser, enter **https://<CIMC-IP address>/** to open the CIMC interface.

**Step 6** Enter the initial **User Name** (admin) and **Password** (password).

Figure 3: Cisco Integrated Management Controller (CIMC) Interface



The CIMC interface can now be used to view the server health and open a KVM to complete the remaining setup steps remotely.

