



Updating Firmware with FirmwareUp

This topic describes how to update the firmware with the **FirmwareUp** option available in the **Boot** menu.

- [About Updating Firmware, on page 1](#)
- [Updating Firmware Procedure, on page 1](#)

About Updating Firmware

Firmware updates are essential for maintaining the optimal performance, security, and compatibility of your Secure Malware Analytics Appliance. These updates often introduce new features, bug fixes, and security enhancements to ensure your device is operating at its best.

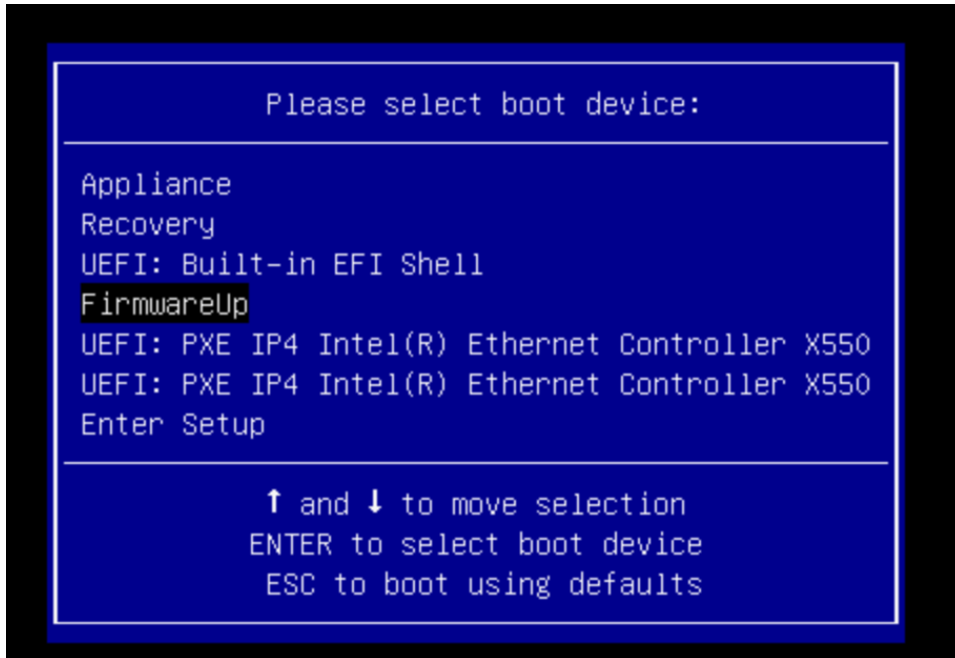
Updating Firmware Procedure

Before you begin

Make sure your Secure Malware Analytics Appliance version is 2.19.4 or newer.

Procedure

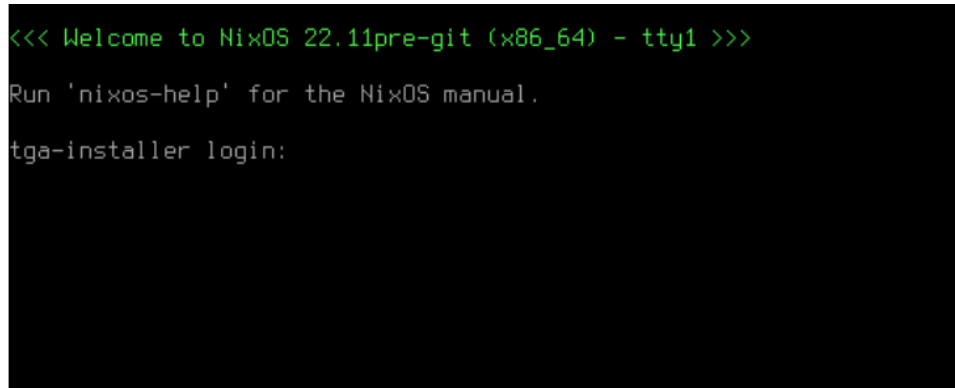
- | | |
|---------------|---|
| Step 1 | Power on or reboot the Secure Malware Analytics Appliance. To reboot click the Operations tab and choose Power , and then click the Reboot button. The appliance reboots, and opens the BIOS window. |
| Step 2 | Press F6 repeatedly during the boot process to enter the UEFI (Unified Extensible Firmware Interface) boot menu. |
| Step 3 | Use the arrow keys to navigate to the FirmwareUp option and press Enter . |

Figure 1: FirmwareUp

The update process will begin automatically.

Note

When the following login screen appears, you can safely ignore it and the update process will continue without any issues.



Once the firmware update is complete, the appliance will reboot. The appliance's regular software will then load as usual.