



CHAPTER 15

Configuring Video Monitoring

This chapter describes how to view live and recorded video streams from the Cisco Video Surveillance Manager (Cisco VSM), including how to view video associated with events and alarms. The inventory of VSM cameras and archived video is available to Cisco PAM users in real-time over the Access Control IP network. Cameras created, updated, or deleted in Cisco VSM are automatically updated in Cisco PAM.

Contents

- [Enabling Video Monitoring, page 15-2](#)
 - [Configuring the Camera Driver, page 15-2](#)
 - [Associating Cameras with Devices for Event Video Viewing, page 15-4](#)
 - [Viewing Live Video Using the Camera Manager, page 15-6](#)
- [Viewing Video, page 15-6](#)
 - [Viewing Live Video Using the Camera Manager, page 15-6](#)
 - [Viewing Video Events, page 15-7](#)
- [Synchronizing Cisco PAM with the Cisco VSM Camera Database, page 15-8](#)

Enabling Video Monitoring

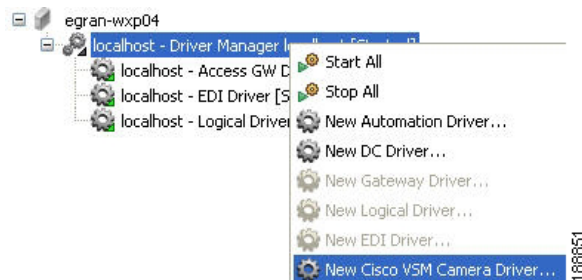
To enable video monitoring and playback in Cisco PAM, complete the following instructions:

- [Configuring the Camera Driver, page 15-2](#)
- [Associating Cameras with Devices for Event Video Viewing, page 15-4](#)
- [Installing the Cisco ReView Player Desktop Application, page 15-5](#)

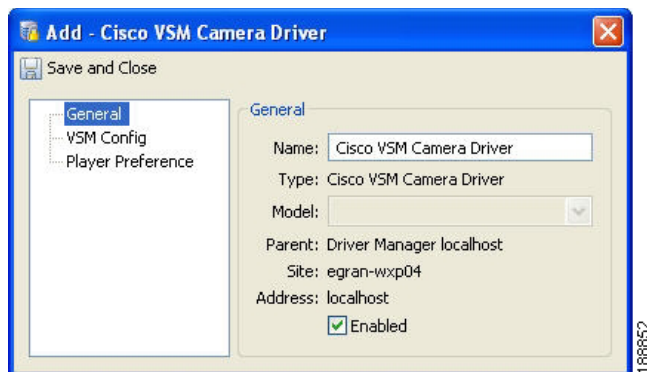
Configuring the Camera Driver

To enable video monitoring, add the VSM Camera Driver in the Hardware module:

- Step 1** Select **Hardware** from the **Doors** menu (you can also select **Hardware** from the **Events & Alarms** menu, in the **Video** sub-menu).
- Step 2** Right-click the **Driver Manager** and select **New Cisco VSM Camera Driver**.



- Step 3** Enter the driver name in the properties window. For example: `Cisco VSM Camera Driver`.



Step 4 Enter the camera **Player Preferences**:



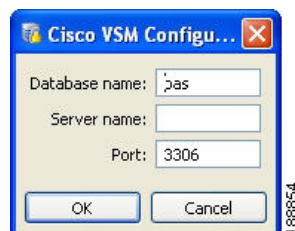
- a. Enter the **Player width**: the width of the video player in pixels.
- b. Enter the **Player height**: the height of the video player in pixels.
- c. Enter the **Maximum player instances**: limits the number of simultaneous video players that can be open on the desktop at a time. Enter a number from 1 to 4.
- d. Enter the **Position**: the position on the screen where the video player appears. If the position is set to **Center**, the video player opens in the center of the screen each time it is launched.
- e. Click **Save and Close** to close the window.

Step 5 Right-click the **VSM Camera Driver** and select **Start** to enable the Cisco PAM video features.

Step 6 Verify that the driver status reads *Started*.

Step 7 Enter the Cisco VSM server settings:

- a. Right-click the **Cisco VSM Camera Driver** and select **Setup Cisco VSM**.



- b. Enter the **Database name**: the Cisco VSM database name. The default is `bas`.
- c. Enter the **Server name**: the name or IP Address of the Cisco VSM database server.
- d. Enter the **Port number**: the port number for the Cisco VSM database server.
- e. Click **OK** to save the changes and close the window.

Associating Cameras with Devices for Event Video Viewing

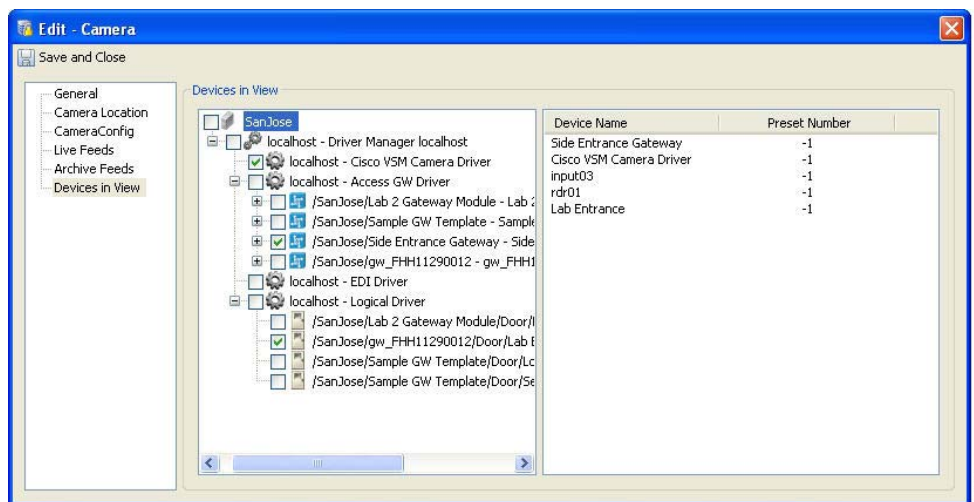
To view video clips for alarms or events in Cisco PAM, associate a camera with a device or door configuration. When an event occurs for that device or door, a video clip is saved for later viewing.

For example, if you assign a camera to the door configuration `Lab 1`, you can right-click on the events for that door to view video clips from the event. If multiple cameras are associated a device, you can the video streams from all cameras in a matrix grid arrangement.

To associate a camera with a device, do the following:

- Step 1** Complete the instructions in [Configuring the Camera Driver](#), page 15-2.
- Step 2** Open the **Hardware** window from the **Doors** menu. (You can also open the **Hardware** menu from the **Events & Alarms** menu, in the **Video** sub-menu.)
- Step 3** Right-click on a camera and select **Edit**.
- Step 4** Select the sub-menu **Devices in View**, as shown in [Figure 15-1](#).

Figure 15-1 Cisco VSM Camera Properties: Devices In View



Tip You can also access the screen in [Figure 15-1](#) by right-clicking the camera in Camera Manager. See [Viewing Live Video Using the Camera Manager](#), page 15-6 for more information.

- Step 5** Select the device or door configuration that is in view of the camera. Door configurations are listed under the Logical Driver. When an event or alarm occurs for that Gateway or door, video captured by the associated camera at that time can be viewed by right-clicking the event entry.



Note For more information about configuring Cisco VSM cameras, including the options shown in [Figure 15-1](#), see the Cisco Video Surveillance Manager documentation.

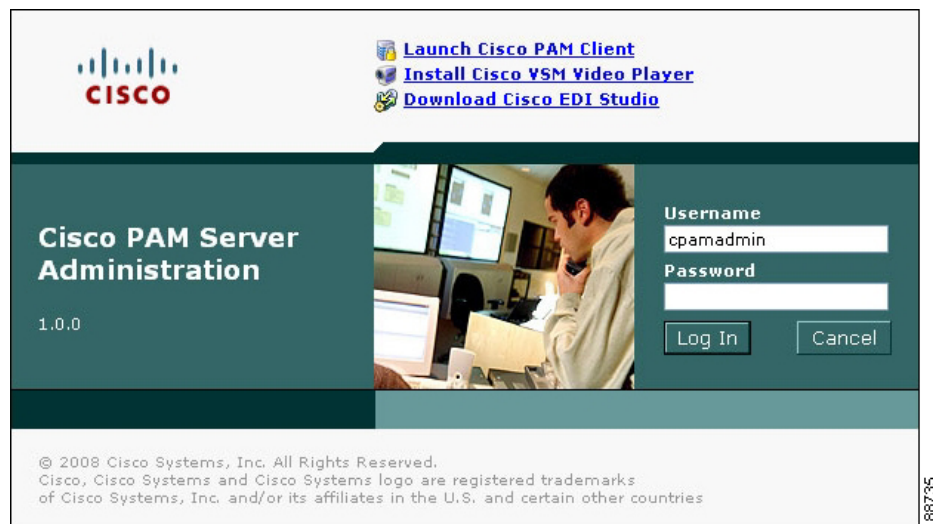
Installing the *Cisco ReView Player* Desktop Application

Install the Cisco ReView Player desktop application to enable the Live and Event video players within Cisco PAM events and alarms. This installation includes the ActiveX controls required for Event video viewing (see [Viewing Video Events](#), page 15-7 for more information).

To download the *Cisco ReView Player* application from the Cisco PAM server and install it on your PC, do the following:

-
- Step 1** Open a Web browser and enter the IP address for Cisco PAM Server Administration utility connections.
- Step 2** Click **Install Cisco VSM Video Player** on the Login page, as shown in [Figure 15-2](#). You do not need to log on to the utility to download the software.

Figure 15-2 Download Link for the Cisco VSM Video Player



Tip You can also log in to the Cisco PAM Server Administration utility and select **Install/Launch Cisco VSM Video Player** from the **Downloads** menu. See [Performing Additional Configuration, Administration, and Monitoring Tasks](#), page 4-11.

- Step 3** Save the installation file to your local drive.
- Step 4** Double-click the installer file on your local drive to download and launch the application.
- Step 5** Follow the on-screen prompts to install the **Cisco VSM Video Player** on your PC.
-

Viewing Video

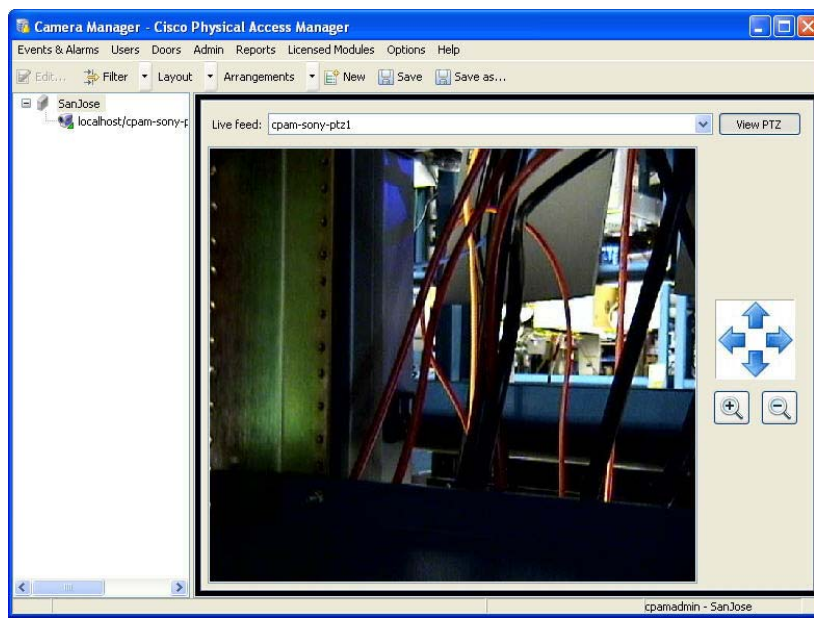
- [Viewing Live Video Using the Camera Manager, page 15-6](#)
- [Viewing Video Events, page 15-7](#)

Viewing Live Video Using the Camera Manager

The Camera Manager displays live video streams from any camera in the Cisco VSM camera inventory. You can view video from a single camera (as shown in [Figure 15-3](#)), or from multiple cameras in a matrix.

-
- Step 1** Select **Camera Manager** from the **Events & Alarms** menu, in the **Video** sub-menu.
- Step 2** Expand the hardware tree to locate a camera.
- Step 3** Drag a camera onto the viewing screen to view live video from that camera.
- Step 4** Use the following additional controls, as needed:
- **Live Feed:** Selects the video feed from the selected camera.
 - **View PTZ:** Shows or hides the pan, zoom and tilt controls to the right of the video.
 - **Layout:** Selects a layout to display the video stream from a single camera, or from multiple cameras in a grid.
 - **Arrangement:** Selects a saved Arrangement of views and cameras.
 - **Save:** Saves the Arrangement.
 - **Save As:** Saves the Arrangement under a different name.

Figure 15-3 Camera Manager





Tip

You can also view live video from the Hardware module. Under the VSM Camera Driver, right click a camera and then select **View Live Video**.

Viewing Video Events

To view video associated with a Cisco PAM event or alarm, associate one or more cameras with a device or door configuration. When an event occurs, video can be accessed by right-clicking on the event or alarm entry.

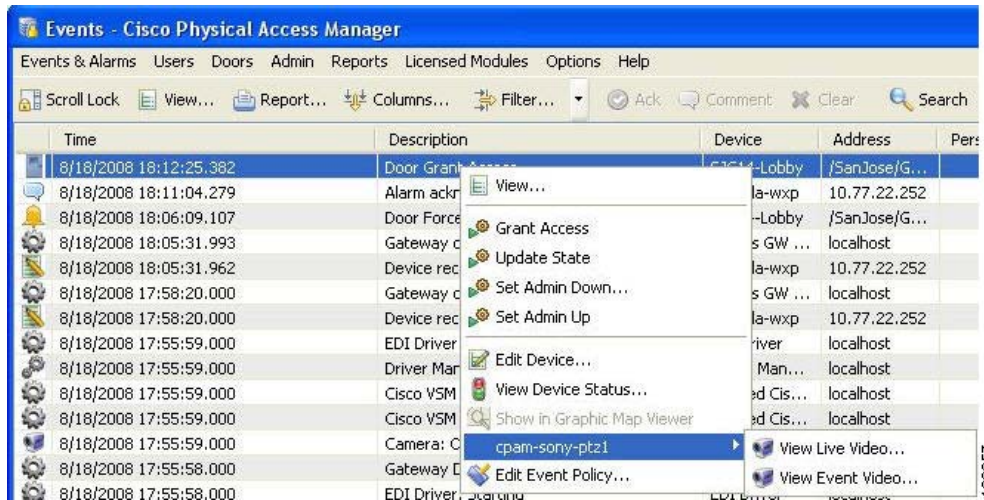
For example, if Door_d1 is associated with the camera C1, you can view video from that camera when door events occur, such as Door Access Denied, Door Held Open, or Door Access granted.

To view event video, do the following:

- Step 1** Complete the instructions in [Associating Cameras with Devices for Event Video Viewing](#), page 15-4.
- Step 2** Open **Events & Alarms** to view events.
- Step 3** Right-click an event or alarm entry.
- Step 4** Select a camera name from the menu, and then select **View Live Video** or **View Event Video**.

Figure 15-5.

Figure 15-4 Cisco VSM Camera Inventory



Note

Cameras appear only if video is available for that event.

Synchronizing Cisco PAM with the Cisco VSM Camera Database

Use the **Synchronize with Cisco VSM** command to synchronize Cisco PAM with the Cisco VSM camera inventory. This command is only necessary if the Cisco VSM camera inventory is not reflected in the **Cisco VSM Camera Driver**.

Right-click the **Cisco VSM Camera Driver** and select **Synchronize with Cisco VSM** to add all available Cisco VSM cameras to the driver. The cameras are listed as children of the driver, as shown in [Figure 15-5](#).

Figure 15-5 Cisco VSM Camera Inventory

