



Additional Installation Information

- [SNS Appliance Reference](#), on page 1
- [VMware Virtual Machine](#), on page 3
- [Linux KVM](#), on page 16
- [Microsoft Hyper-V](#), on page 19

SNS Appliance Reference

Create a Bootable USB Device to Install Cisco ISE

Use the Fedora Media Writer (formerly Fedora Live USB Creator) tool to create a bootable USB device from the Cisco ISE installation ISO file.

Before you begin

- Download Fedora Media Writer to the local system from the following location: <https://github.com/lmacken/liveusb-creator/releases/tag/3.12.0>



Note Other USB tools might work, but we recommend that you use Fedora Media Writer 3.12.0 as it has been tested with Cisco ISE.

- Download the Cisco ISE installation ISO file to the local system.
- Use an 8-GB (or higher) USB device.

-
- Step 1** Reformat the USB device using FAT16 or FAT32 to free up all the space.
- Step 2** Plug in the USB device to the local system and launch **Fedora Media Writer**.
- Step 3** Click **Browse** from the **Use existing Live CD** area and choose the Cisco ISE ISO file.
- Step 4** Choose the USB device from the **Target Device** drop-down list.
- If there is only one USB device connected to the local system, it is selected automatically.
- Step 5** Click **Create Live USB**.

The progress bar indicates the progress of the bootable USB creation. After this process is complete, the content of the USB drive is available in the local system that you used to run the USB tool. There are two text files that you must manually update before you can install Cisco ISE.

Step 6 From the USB drive, open the following text files in a text editor:

- `isolinux/isolinux.cfg`
- `EFI/BOOT/grub.cfg`

Step 7 Replace the term "**cdrom**" in both the files.

- If you have a SNS 3515, 3595, 3615, 3655, or 3695 appliance, replace the term "**cdrom**" with "**hd:sdb1**" in both the files.

Specifically, replace all instances of the "**cdrom**" string. For example, replace

ks=cdrom/ks.cfg

with

ks=hd:sdb1:/ks.cfg

Step 8 Save the files and exit.

Step 9 Safely remove the USB device from the local system.

Step 10 Plug in the bootable USB device to the Cisco ISE appliance, restart the appliance, and boot from the USB drive to install Cisco ISE.

Reimage the Cisco SNS 3500/3600 Series Appliance

The Cisco SNS 3500/3600 series appliances do not have built-in DVD drives. Therefore, to reimage a Cisco ISE hardware appliance with Cisco ISE software, you can do one of the following:



Note The SNS 3500 and 3600 series appliances support the Unified Extensible Firmware Interface (UEFI) secure boot feature. This feature ensures that only a Cisco-signed ISE image can be installed on the SNS 3500 and 3600 series appliances, and prevents installation of any unsigned operating system even with physical access to the device. For example, generic operating systems, such as Red Hat Enterprise Linux or Microsoft Windows cannot boot on this appliance.

The SNS 3515 and SNS 3595 appliances support only Cisco ISE 2.0.1 or later releases. You cannot install a release earlier than 2.0.1 on the SNS 3515 or SNS 3595 appliance.

- Use the Cisco Integrated Management Controller (CIMC) interface to map the installation .iso file to the virtual DVD device. See [Install Cisco ISE Using CIMC](#) for more information.
- Create an install DVD with the installation .iso file and plug in an USB external DVD drive and boot the appliance from the DVD drive.
- Create a bootable USB device using the installation .iso file and boot the appliance from the USB drive. See [Create a Bootable USB Device to Install Cisco ISE, on page 1](#) and [Install Cisco ISE Using CIMC](#) for more information.

VMware Virtual Machine



Note The VMware form factor instructions provided in this document are applicable for ISE installed on Cisco Hyperflex as well.

Virtual Machine Resource and Performance Checks

Before installing Cisco ISE on a virtual machine, the installer performs hardware integrity checks by comparing the available hardware resources on the virtual machine with the recommended specifications.

During a VM resource check, the installer checks for the hard disk space, number of CPU cores allocated to the VM, CPU clock speed, and RAM allocated to the VM. If the VM resources do not meet the basic evaluation specifications, the installation aborts. This resource check is applicable only for ISO-based installations.

When you run the Setup program, a VM performance check is done, where the installer checks for disk I/O performance. If the disk I/O performance does not meet the recommended specifications, a warning appears on screen, but it allows you to continue with the installation.

The VM performance check is done periodically (every hour) and the results are averaged for a day. If the disk I/O performance does not meet the recommended specification, an alarm is generated.

The VM performance check can also be done on demand from the Cisco ISE CLI using the **show tech-support** command.

The VM resource and performance checks can be run independent of Cisco ISE installation. You can perform this test from the Cisco ISE boot menu.

Install Cisco ISE on VMware Virtual Machine Using the ISO File

This section describes how to install Cisco ISE on a VMware virtual machine using the ISO file.

Prerequisites for Configuring a VMware ESXi Server

Review the following configuration prerequisites listed in this section before you attempt to configure a VMWare ESXi server:

- Remember to log in to the ESXi server as a user with administrative privileges (root user).
- Cisco ISE is a 64-bit system. Before you install a 64-bit system, ensure that Virtualization Technology (VT) is enabled on the ESXi server. Ensure that your Guest Operating System is set to Red Hat Enterprise Linux (RHEL) 7 (64-bit) or Red Hat Enterprise Linux (RHEL) 6 (64-bit).
- For Red Hat Enterprise Linux 7, the default NIC type is VMXNET3 Adapter. You can add up to six NICs for your Cisco ISE virtual machine, but ensure that you choose the same Adapter for all the NICs. Cisco ISE supports the E1000 Adapter.



Note If you choose the default network driver (VMXNET3) as the Network Adapter, check the physical adapter mappings. Ensure that you map the Cisco ISE GigabitEthernet 0 interface to the 4th interface (NIC 4) in ESXi server as listed in the following table.

ADE-OS	Cisco ISE	E1000	VMXNET3
eth0	GE0	1	4
eth1	GE1	2	1
eth2	GE2	3	2
eth3	GE3	4	3
eth4	GE4	5	5
eth5	GE5	6	6

If you choose the E1000 Adapter, by default, the ESXi adapters and Cisco ISE adapters are mapped correctly.

- Ensure that you allocate the recommended amount of disk space on the VMware virtual machine. See the [Disk Space Requirements](#) section for more information.
- If you have not created a VMware virtual machine file system (VMFS), you must create one to support the Cisco ISE virtual appliance. The VMFS is set for each of the storage volumes configured on the VMware host. For VMFS5, the 1-MB block size supports up to 1.999 TB virtual disk size.

Virtualization Technology Check

If you have an ESXi server installed already, you can check if VT is enabled on it without rebooting the machine. To do this, use the **esxcfg-info** command. Here is an example:

```
~ # esxcfg-info |grep "HV Support"
|----HV Support.....3
|----World Command Line.....grep HV Support
```

If HV Support has a value of 3, then VT is enabled on the ESXi server and you can proceed with the installation.

If HV Support has a value of 2, then VT is supported, but not enabled on the ESXi server. You must edit the BIOS settings and enable VT on the server.

Enable Virtualization Technology on an ESXi Server

You can reuse the same hardware that you used for hosting a previous version of Cisco ISE virtual machine. However, before you install the latest release, you must enable Virtualization Technology (VT) on the ESXi server.

Step 1 Reboot the appliance.

Step 2 Press **F2** to enter setup.

Step 3 Choose **Advanced** > **Processor Configuration**.

Step 4 Select **Intel(R) VT** and enable it.

Step 5 Press **F10** to save your changes and exit.

Configure VMware Server Interfaces for the Cisco ISE Profiler Service

Configure VMware server interfaces to support the collection of Switch Port Analyzer (SPAN) or mirrored traffic to a dedicated probe interface for the Cisco ISE Profiler Service.

Step 1 Choose **Configuration** > **Networking** > **Properties** > **VMNetwork** (the name of your VMware server instance) **VMswitch0** (one of your VMware ESXi server interfaces) **Properties** **Security**.

Step 2 In the Policy Exceptions pane on the **Security** tab, check the **Promiscuous Mode** check box.

Step 3 In the Promiscuous Mode drop-down list, choose **Accept** and click **OK**.

Repeat the same steps on the other VMware ESXi server interface used for profiler data collection of SPAN or mirrored traffic.

Connect to the VMware Server Using the Serial Console

Step 1 Power down the particular VMware server (for example ISE-120).

Step 2 Right-click the VMware server and choose **Edit**.

Step 3 Click **Add** on the Hardware tab.

Step 4 Choose **Serial Port** and click **Next**.

Step 5 In the Serial Port Output area, click the **Use physical serial port on the host** or the **Connect via Network** radio button and click **Next**.

- If you choose the Connect via Network option, you must open the firewall ports over the ESXi server.
- If you select the Use physical serial port on the host, choose the port. You may choose one of the following two options:
 - **/dev/ttyS0** (In the DOS or Windows operating system, this will appear as COM1).
 - **/dev/ttyS1** (In the DOS or Windows operating system, this will appear as COM2).

Step 6 Click **Next**.

Step 7 In the Device Status area, check the appropriate check box. The default is Connected.

Step 8 Click **OK** to connect to the VMware server.

Configure a VMware Server

Before you begin

Ensure that you have read the details in the [Prerequisites for Configuring a VMware ESXi Server](#), on page 3 section.

-
- Step 1** Log in to the ESXi server.
- Step 2** In the VMware vSphere Client, in the left pane, right-click your host container and choose **New Virtual Machine**.
- Step 3** In the Configuration dialog box, choose **Custom** for the VMware configuration and click **Next**.
- Step 4** Enter a name for the VMware system and click **Next**.

Tip Tip Use the hostname that you want to use for your VMware host.

- Step 5** Choose a datastore that has the recommended amount of space available and click **Next**.
- Step 6** (Optional) If your VM host or cluster supports more than one VMware virtual machine version, choose a Virtual Machine version such as Virtual Machine Version 7, and click **Next**.
- Step 7** Choose **Linux** and select the supported Red Hat Enterprise Linux version from the **Version** drop-down list.
- Step 8** Choose a value from the Number of virtual sockets and the Number of cores per virtual socket drop-down list. Total number of cores should be:

SNS 3600 Series Appliance:

- Small—16
- Medium—24
- Large—24

The number of cores is twice of that present in equivalent of the Cisco Secure Network Server 3600 series, due to hyperthreading. For example, in case of Small network deployment, you must allocate 16 vCPU cores to meet the CPU specification of SNS 3615, which has 8 CPU Cores or 16 Threads.

Note We strongly recommend that you reserve CPU and memory resources to match the resource allocation. Failure to do so may significantly impact ISE performance and stability.

- Step 9** Choose the amount of memory and click **Next**.
- Step 10** Choose the **E1000** NIC driver from the Adapter drop-down list and click **Next**.
- Note** We recommend that you select E1000 to ensure correct adapter order by default. If you choose VMXNET3, you might have to remap the ESXi adapter to synchronize it with the ISE adapter order.

- Step 11** Choose **Paravirtual** as the SCSI controller and click **Next**.
- Step 12** Choose **Create a new virtual disk** and click **Next**.
- Step 13** In the Disk Provisioning dialog box, click **Thick Provision** radio button, and click **Next** to continue.
- Cisco ISE supports both thick and thin provisioning. However, we recommend that you choose thick provisioning for better performance, especially for Monitoring nodes. If you choose thin provisioning, operations such as upgrade, backup and restore, and debug logging that require more disk space might be impacted during initial disk expansion.

- Step 14** Uncheck the **Support clustering features such as Fault Tolerance** check box.

- Step 15** Choose the advanced options, and click **Next**.
- Step 16** Verify the configuration details, such as Name, Guest OS, CPUs, Memory, and Disk Size of the newly created VMware system.
- Step 17** Click **Finish**.
- The VMware system is now installed.
-

What to do next

To activate the newly created VMware system, right-click VM in the left pane of your VMware client user interface and choose **Power > Power On**.

Increase Virtual Machine Power-On Boot Delay Configuration

On a VMware virtual machine, the boot delay by default is set to 0. You can change this boot delay to help you choose the boot options (while resetting the Administrator password, for example).

- Step 1** From the VSphere client, right click the VM and choose **Edit Settings**.
- Step 2** Click the **Options** tab.
- Step 3** Choose **Advanced > Boot Options**.
- Step 4** From the **Power on Boot Delay** area, select the time in milliseconds to delay the boot operation.
- Step 5** Check the check box in the **Force BIOS Setup** area to enter into the BIOS setup screen when the VM boots the next time.
- Step 6** Click **OK** to save your changes.
-

Install Cisco ISE Software on a VMware System

Before you begin

- After installation, if you do not install a permanent license, Cisco ISE automatically installs a 90-day evaluation license that supports a maximum of 100 endpoints.
 - Download the Cisco ISE software from the Cisco Software Download Site at <http://www.cisco.com/en/US/products/ps11640/index.html> and burn it on a DVD. You will be required to provide your Cisco.com credentials.
 - (Optional; applicable only if you are installing Cisco ISE on VMware Cloud) Virtual machine can be hosted on software-defined data center (SDDC) provided by VMware Cloud. The process of installing Cisco ISE on VMware Cloud is exactly the same as that of installing Cisco ISE on VMware virtual machine. Ensure that appropriate security group policies are configured on VMware Cloud (under **Networking & Security > Security > Gateway Firewall Settings**) to enable reachability to on-premises deployment, required devices and services.
-

- Step 1** Log in to the VMware client.
- Step 2** For the virtual machine to enter the BIOS setup mode, right click the VM and click **Edit Settings**.

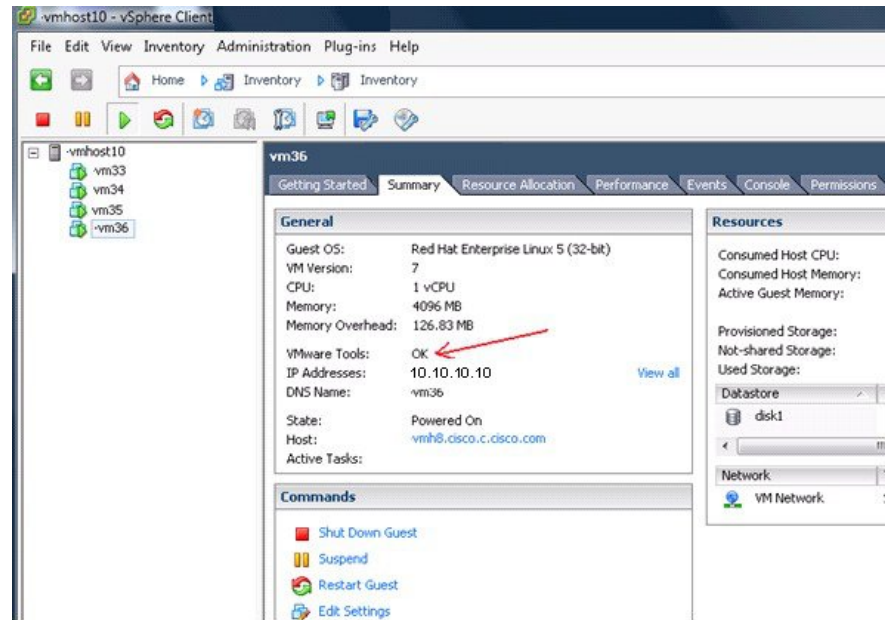
- Step 3** Click the **Options** tab.
- Step 4** Select **Boot Options** and configure the following option:
- In the **Force BIOS Setup** area, check the check box to enter the BIOS setup screen when the virtual machine boots.
- Note** You must change the firmware from **BIOS** to **EFI** in the boot mode of VM settings to boot GPT partition with 2 TB or above.
- Step 5** Click **OK**.
- Step 6** Ensure that the Coordinated Universal Time (UTC) and the correct boot order is set in BIOS:
- If the virtual machine is turned on, turn the system off.
 - Turn on the virtual machine.
- The system enters the BIOS setup mode.
- In the Main BIOS menu, using the arrow keys, navigate to the Date and Time field and press **Enter**.
 - Enter the UTC/Greenwich Mean Time (GMT) time zone.
- This time zone setting ensures that the reports, logs, and posture-agent log files from the various nodes in your deployment are always synchronized with regard to the time stamps.
- Using the arrow keys, navigate to the Boot menu and press **Enter**.
 - Using the arrow keys, select CD-ROM Drive and press + to move the CD-ROM drive up the order.
 - Using the arrow keys, navigate to the Exit menu and choose **Exit Saving Changes**.
 - Choose **Yes** to save the changes and exit.
- Step 7** Insert the Cisco ISE software DVD into the VMware ESXi host CD/DVD drive and turn on the virtual machine.
- When the DVD boots, the console displays:
- ```
Cisco ISE Installation (Serial Console)
Cisco ISE Installation (Keyboard/Monitor)
System Utilities (Serial Console)
System Utilities (Keyboard/Monitor)
```
- Step 8** Use the arrow keys to select **Cisco ISE Installation (Serial Console)** or **Cisco ISE Installation (Keyboard/Monitor)** and press **Enter**. If you choose the serial console option, you should have a serial console set up on your virtual machine. See the [VMware vSphere Documentation](#) for information on how to create a console.
- The installer starts the installation of the Cisco ISE software on the VMware system. Allow 20 minutes for the installation process to complete. When the installation process finishes, the virtual machine reboots automatically. When the VM reboots, the console displays:
- ```
Type 'setup' to configure your appliance
localhost:
```
- Step 9** At the system prompt, type **setup** and press **Enter**. The Setup Wizard appears and guides you through the initial configuration.

VMware Tools Installation Verification

Verify VMWare Tools Installation Using the Summary Tab in the vSphere Client

Go to the Summary tab of the specified VMware host in the vSphere Client. The value in the VMware Tools field should be OK.

Figure 1: Verifying VMware Tools in the vSphere Client



300631

Verify VMWare Tools Installation Using the CLI

You can also verify if the VMware tools are installed using the **show inventory** command. This command lists the NIC driver information. On a virtual machine with VMware tools installed, VMware Virtual Ethernet driver will be listed in the Driver Descr field.

```

NAME: "ISE-VM-K9 chassis", DESCR: "ISE-VM-K9 chassis"
PID: ISE-VM-K9      , VID: A0  , SN: FCH184X9XXX
Total RAM Memory: 65700380 kB
CPU Core Count: 16
CPU 0: Model Info: Intel(R) Xeon(R) CPU E5-2640 v3 @ 2.60GHz
CPU 1: Model Info: Intel(R) Xeon(R) CPU E5-2640 v3 @ 2.60GHz
CPU 2: Model Info: Intel(R) Xeon(R) CPU E5-2640 v3 @ 2.60GHz
CPU 3: Model Info: Intel(R) Xeon(R) CPU E5-2640 v3 @ 2.60GHz
CPU 4: Model Info: Intel(R) Xeon(R) CPU E5-2640 v3 @ 2.60GHz
CPU 5: Model Info: Intel(R) Xeon(R) CPU E5-2640 v3 @ 2.60GHz
CPU 6: Model Info: Intel(R) Xeon(R) CPU E5-2640 v3 @ 2.60GHz
CPU 7: Model Info: Intel(R) Xeon(R) CPU E5-2640 v3 @ 2.60GHz
CPU 8: Model Info: Intel(R) Xeon(R) CPU E5-2640 v3 @ 2.60GHz
CPU 9: Model Info: Intel(R) Xeon(R) CPU E5-2640 v3 @ 2.60GHz
CPU 10: Model Info: Intel(R) Xeon(R) CPU E5-2640 v3 @ 2.60GHz
CPU 11: Model Info: Intel(R) Xeon(R) CPU E5-2640 v3 @ 2.60GHz
CPU 12: Model Info: Intel(R) Xeon(R) CPU E5-2640 v3 @ 2.60GHz
CPU 13: Model Info: Intel(R) Xeon(R) CPU E5-2640 v3 @ 2.60GHz
CPU 14: Model Info: Intel(R) Xeon(R) CPU E5-2640 v3 @ 2.60GHz
CPU 15: Model Info: Intel(R) Xeon(R) CPU E5-2640 v3 @ 2.60GHz
Hard Disk Count(*): 1
Disk 0: Device Name: /xxx/abc
Disk 0: Capacity: 1198.00 GB
NIC Count: 6
NIC 0: Device Name: eth0:
NIC 0: HW Address: xx:xx:xx:xx:xx:xx
NIC 0: Driver Descr: Intel(R) Gigabit Ethernet Network Driver
NIC 1: Device Name: eth1:
NIC 1: HW Address: xx:xx:xx:xx:xx:xx

```

```

NIC 1: Driver Descr: Intel(R) Gigabit Ethernet Network Driver
NIC 2: Device Name: eth2:
NIC 2: HW Address: xx:xx:xx:xx:xx:xx
NIC 2: Driver Descr: Intel(R) Gigabit Ethernet Network Driver
NIC 3: Device Name: eth3:
NIC 3: HW Address: xx:xx:xx:xx:xx:xx
NIC 3: Driver Descr: Intel(R) Gigabit Ethernet Network Driver
NIC 4: Device Name: eth4:
NIC 4: HW Address: xx:xx:xx:xx:xx:xx
NIC 4: Driver Descr: Intel(R) Gigabit Ethernet Network Driver
NIC 5: Device Name: eth5:
NIC 5: HW Address: xx:xx:xx:xx:xx:xx
NIC 5: Driver Descr: Intel(R) Gigabit Ethernet Network Driver

```

(*) Hard Disk Count may be Logical.

Support for Upgrading VMware Tools

The Cisco ISE ISO image (regular, upgrade, or patch) contains the supported VMware tools. Upgrading VMware tools through the VMware client user interface is not supported with Cisco ISE. If you want to upgrade any VMware tools to a higher version, support is provided through a newer version of Cisco ISE (regular, upgrade, or patch release).

Clone a Cisco ISE Virtual Machine

You can clone a Cisco ISE VMware virtual machine (VM) to create an exact replica of a Cisco ISE node. For example, in a distributed deployment with multiple Policy Service nodes (PSNs), VM cloning helps you deploy the PSNs quickly and effectively. You do not have to install and configure the PSNs individually.

You can also clone a Cisco ISE VM using a template.



Note For cloning, you need VMware vCenter. Cloning must be done before you run the Setup program.

Before you begin

- Ensure that you shut down the Cisco ISE VM that you are going to clone. In the vSphere client, right-click the Cisco ISE VM that you are about to clone and choose **Power** > **Shut Down Guest**.
- Ensure that you change the IP Address and Hostname of the cloned machine before you power it on and connect it to the network.

Step 1 Log in to the ESXi server as a user with administrative privileges (root user).

VMware vCenter is required to perform this step.

Step 2 Right-click the Cisco ISE VM you want to clone, and click **Clone**.

Step 3 Enter a name for the new machine that you are creating in the Name and Location dialog box and click **Next**.

This is not the hostname of the new Cisco ISE VM that you are creating, but a descriptive name for your reference.

Step 4 Select a Host or Cluster on which you want to run the new Cisco ISE VM and click **Next**.

Step 5 Select a datastore for the new Cisco ISE VM that you are creating and click **Next**.

This datastore could be the local datastore on the ESXi server or a remote storage. Ensure that the datastore has enough disk space.

- Step 6** Click the **Same format as source** radio button in the Disk Format dialog box and click **Next**.
This option copies the same format that is used in the Cisco ISE VM that you are cloning this new machine from.
- Step 7** Click the **Do not customize** radio button in the Guest Customization dialog box and click **Next**.
- Step 8** Click **Finish**.

What to do next

- [Change the IP Address and Hostname of a Cloned Virtual Machine](#)
- [Connect a Cloned Cisco Virtual Machine to the Network](#)

Clone a Cisco ISE Virtual Machine Using a Template

If you are using vCenter, then you can use a VMware template to clone a Cisco ISE virtual machine (VM). You can clone the Cisco ISE node to a template and use that template to create multiple new Cisco ISE nodes. Cloning a virtual machine using a template is a two-step process:

Before you begin



Note For cloning, you need VMware vCenter. Cloning must be done before you run the Setup program.

- Step 1** [Create a Virtual Machine Template, on page 11](#)
- Step 2** [Deploy a Virtual Machine Template, on page 12](#)
-

Create a Virtual Machine Template

Before you begin

- Ensure that you shut down the Cisco ISE VM that you are going to clone. In the vSphere client, right-click the Cisco ISE VM that you are about to clone and choose **Power > Shut Down Guest**.
- We recommend that you create a template from a Cisco ISE VM that you have just installed and not run the setup program on. You can then run the setup program on each of the individual Cisco ISE nodes that you have created and configure IP address and hostnames individually.

-
- Step 1** Log in to the ESXi server as a user with administrative privileges (root user).
VMware vCenter is required to perform this step.
- Step 2** Right-click the Cisco ISE VM that you want to clone and choose **Clone > Clone to Template**.

- Step 3** Enter a name for the template, choose a location to save the template in the Name and Location dialog box, and click **Next**.
- Step 4** Choose the ESXi host that you want to store the template on and click **Next**.
- Step 5** Choose the datastore that you want to use to store the template and click **Next**.
Ensure that this datastore has the required amount of disk space.
- Step 6** Click the **Same format as source** radio button in the Disk Format dialog box and click **Next**.
The Ready to Complete dialog box appears.
- Step 7** Click **Finish**.
-

Deploy a Virtual Machine Template

After you create a virtual machine template, you can deploy it on other virtual machines (VMs).

- Step 1** Right-click the Cisco ISE VM template that you have created and choose **Deploy Virtual Machine from this template**.
- Step 2** Enter a name for the new Cisco ISE node, choose a location for the node in the Name and Location dialog box, and click **Next**.
- Step 3** Choose the ESXi host where you want to store the new Cisco ISE node and click **Next**.
- Step 4** Choose the datastore that you want to use for the new Cisco ISE node and click **Next**.
Ensure that this datastore has the required amount of disk space.
- Step 5** Click the **Same format as source** radio button in the Disk Format dialog box and click **Next**.
- Step 6** Click the **Do not customize** radio button in the Guest Customization dialog box.
The Ready to Complete dialog box appears.
- Step 7** Check the **Edit Virtual Hardware** check box and click **Continue**.
The Virtual Machine Properties page appears.
- Step 8** Choose **Network adapter**, uncheck the **Connected** and **Connect at power on** check boxes, and click **OK**.
- Step 9** Click **Finish**.
You can now power on this Cisco ISE node, configure the IP address and hostname, and connect it to the network.
-

What to do next

- [Change the IP Address and Hostname of a Cloned Virtual Machine](#)
- [Connect a Cloned Cisco Virtual Machine to the Network](#)

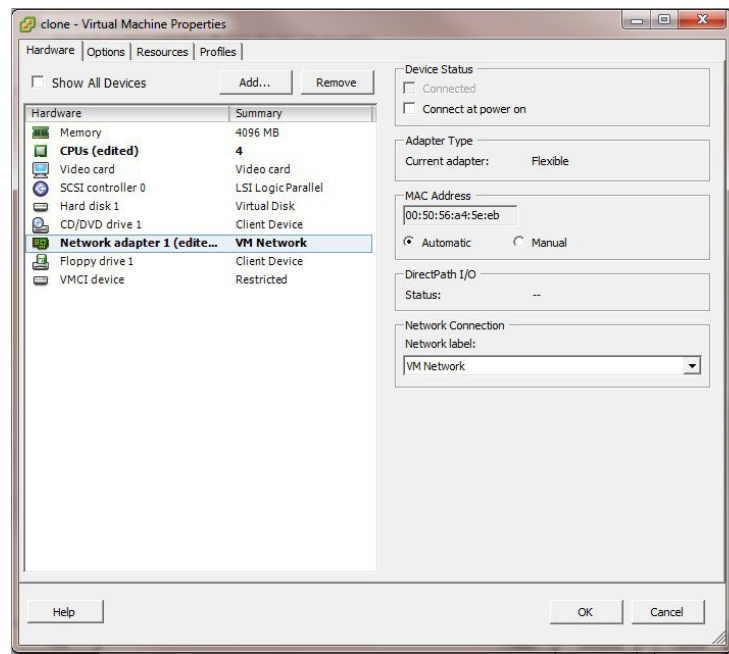
Change the IP Address and Hostname of a Cloned Virtual Machine

After you clone a Cisco ISE virtual machine (VM), you have to power it on and change the IP address and hostname.

Before you begin

- Ensure that the Cisco ISE node is in the standalone state.
- Ensure that the network adapter on the newly cloned Cisco ISE VM is not connected when you power on the machine. Uncheck the **Connected** and **Connect at power on** check boxes. Otherwise, if this node comes up, it will have the same IP address as the source machine from which it was cloned.

Figure 2: Disconnecting the Network Adapter



- Ensure that you have the IP address and hostname that you are going to configure for the newly cloned VM as soon as you power on the machine. This IP address and hostname entry should be in the DNS server. You cannot use "localhost" as the hostname for a node.
- Ensure that you have certificates for the Cisco ISE nodes based on the new IP address or hostname.

Procedure

Step 1 Right-click the newly cloned Cisco ISE VM and choose **Power > Power On**.

Step 2 Select the newly cloned Cisco ISE VM and click the **Console** tab.

Step 3 Enter the following commands on the Cisco ISE CLI:

```
configure terminal
hostname hostname
```

The hostname is the new hostname that you are going to configure. The Cisco ISE services are restarted.

Step 4 Enter the following commands:

```
interface gigabit 0
ip address ip_address netmask
```

The `ip_address` is the address that corresponds to the hostname that you entered in step 3 and `netmask` is the subnet mask of the `ip_address`. The system will prompt you to restart the Cisco ISE services. See the *Cisco Identity Services Engine CLI Reference Guide*, for the `ip` address and `hostname` commands.

Step 5 Enter **Y** to restart Cisco ISE services.

Connect a Cloned Cisco Virtual Machine to the Network

After you power on and change the `ip` address and `hostname`, you must connect the Cisco ISE node to the network.

- Step 1** Right-click the newly cloned Cisco ISE virtual machine (VM) and click **Edit Settings**.
- Step 2** Click **Network adapter** in the Virtual Machine Properties dialog box.
- Step 3** In the Device Status area, check the **Connected** and **Connect at power on** check boxes.
- Step 4** Click **OK**.
-

Migrate Cisco ISE VM from Evaluation to Production

After evaluating the Cisco ISE release, you can migrate the from an evaluation system to a fully licensed production system.

Before you begin

- When you move the VMware server to a production environment that supports a larger number of users, be sure to reconfigure the Cisco ISE installation to the recommended minimum disk size or higher (up to the allowed maximum of 2.4 TB).
 - Please note that you cannot migrate data to a production VM from a VM created with less than 200 GB of disk space. You can only migrate data from VMs created with 200 GB or more disk space to a production environment.
-

- Step 1** Back up the configuration of the evaluation version.
- Step 2** Ensure that your production VM has the required amount of disk space.
- Step 3** Install a production deployment license.
- Step 4** Restore the configuration to the production system.
-

On-Demand Virtual Machine Performance Check Using the `show tech-support` Command

You can run the `show tech-support` command from the CLI to check the VM performance at any point of time. The output of this command will be similar to the following:

```
ise-vm123/admin# show tech | begin "disk IO perf"
Measuring disk IO performance
*****
Average I/O bandwidth writing to disk device: 48 MB/second
Average I/O bandwidth reading from disk device: 193 MB/second
WARNING: VM I/O PERFORMANCE TESTS FAILED!
WARNING: The bandwidth writing to disk must be at least 50 MB/second,
WARNING: and bandwidth reading from disk must be at least 300 MB/second.
WARNING: This VM should not be used for production use until disk
WARNING: performance issue is addressed.
Disk I/O bandwidth filesystem test, writing 300 MB to /opt:
314572800 bytes (315 MB) copied, 7.81502 s, 40.3 MB/s
Disk I/O bandwidth filesystem read test, reading 300 MB from /opt:
314572800 bytes (315 MB) copied, 0.416897 s, 755 MB/s
```

Virtual Machine Resource Check from the Cisco ISE Boot Menu

You can check for virtual machine resources independent of Cisco ISE installation from the boot menu.

The CLI transcript appears as follows:

```
Cisco ISE Installation (Serial Console)
Cisco ISE Installation (Keyboard/Monitor)
System Utilities (Serial Console)
System Utilities (Keyboard/Monitor)
```

Use the arrow keys to select **System Utilities (Serial Console)** or **System Utilities (Keyboard/Monitor)** and press **Enter**. The following screen appears:

Available System Utilities:

```
[1] Recover administrator password
[2] Virtual Machine Resource Check
[3] Perform System Erase
[q] Quit and reload
```

Enter option [1 - 3] q to Quit

Enter **2** to check for VM resources. The output will be similar to the following:

```
*****
***** Virtual Machine host detected..
***** Hard disk(s) total size detected: 600 Gigabyte
***** Physical RAM size detected: 16267516 Kbytes
***** Number of network interfaces detected: 6
***** Number of CPU cores: 12
***** CPU Mhz: 2300.00
***** Verifying CPU requirement..
***** Verifying RAM requirement..
***** Writing disk partition table..
```

Linux KVM

KVM Virtualization Check

KVM virtualization requires virtualization support from the host processor; Intel VT-x for Intel processors and AMD-V for AMD processors. Open a terminal window on the host and enter the `cat /proc/cpuinfo` command. You must see either the `vmx` or the `svm` flag.

- For Intel VT-x:

```
# cat /proc/cpuinfo
flags: fpu vme de pse tsc msr pae mce cx8 apic sep mtrr pge mca cmov pat pse36 clflush
      dts acpi mmx fxsr sse sse2 ss ht tm pbe syscall nx
      pdpe1gb rdtscp lm constant_tsc arch_perfmon pebs bts rep_good nopl xtopology nonstop_tsc
      aperfmperf eagerfpu pni pclmulqdq dtes64 monitor
      ds_cpl vmx smx est tm2 ssse3 cx16 xtpr pdcm pcid dca sse4_1 sse4_2 x2apic popcnt
      tsc_deadline_timer aes xsave avx lahf_lm arat epb xsaveopt
      pln pts dtherm tpr_shadow vnmi flexpriority ept vpid
```

- For AMD-V:

```
# cat /proc/cpuinfo
flags: fpu tsc msr pae mce cx8 apic mtrr mca cmov pat pse36 clflush mmx fxsr sse sse2
      ht syscall nx mmxext fxsr_opt rdtscp lm 3dnowext 3dnow
      pni cx16 lahf_lm cmp_legacy svm cr8_legacy
```

Install Cisco ISE on KVM

This procedure explains how to create a KVM on RHEL and install Cisco ISE on it using the Virtual Machine Manager (virt-manager).

If you choose to install Cisco ISE through the CLI, enter a command similar to the following one:

```
#virt-install --name=kvm-ise1 --arch=x86_64 --cpu=host --vcpus=2 --ram=4096
--os-type=linux --os-variant=rhel6 --hvm --virt-type=kvm
--cdrom=/home/admin/Desktop/ise-3.0.0.x.SPA.x86_64.iso
--disk=/home/libvirt-images/kvm-ise1.img,size=100
--network type=direct,model=virtio,source=eth2,source_mode=bridge
```

where `ise-3.0.0.x.SPA.x86_64.iso` is the name of the Cisco ISE ISO image.

Before you begin

Download the Cisco ISE ISO image to your local system.

Step 1 From the virt-manager, click **New**.

The Create a new virtual machine window appears.

Step 2 Click **Local install media (ISO media or CDROM)**, and then click **Forward**.

Step 3 Click the **Use ISO image** radio button, click **Browse**, and select the ISO image from your local system.

- a) Uncheck the **Automatically detect operating system based on install media** check box, choose Linux as the OS type, choose supported Red Hat Enterprise Linux version, and click **Forward**.

Supported KVM on QEMU 1.5.3-160

Step 4 Choose the RAM and CPU settings and click **Forward**.

Step 5 Check the **Enable storage for this virtual machine** check box and choose the storage settings.

- a) Click the **Select managed or other existing storage** radio button.
- b) Click **Browse**.
- c) From the Storage Pools navigation pane on the left, click **disk FileSystem Directory**.
- d) Click **New Volume**.

A Create storage volume window appears.

- e) Enter a name for the storage volume.
- f) Choose **raw** from the **Format** drop-down list.
- g) Enter the Maximum Capacity.
- h) Click **Finish**.
- i) Choose the volume that you created and click **Choose Volume**.
- j) Click **Forward**.

The Ready to begin the installation screen appears.

Step 6 Check the **Customize configuration before install** check box.

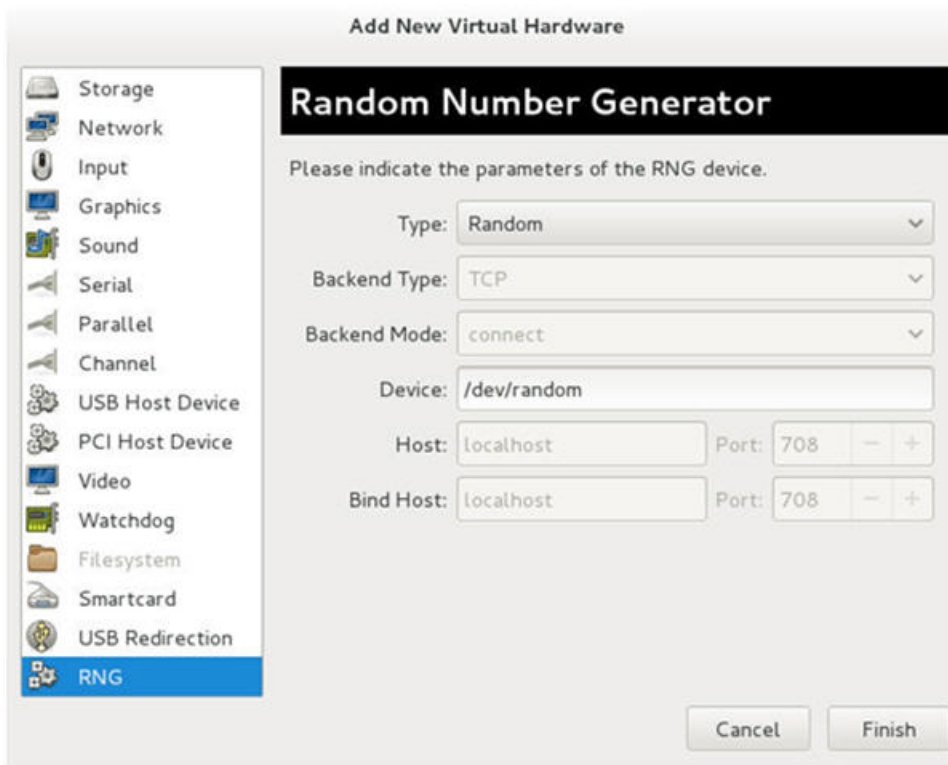
Step 7 Under Advanced options, choose the macvtap as the source for the interface, choose Bridge in the Source mode drop-down list, and click **Finish**.

- a) (Optional) Click **Add Hardware** to add additional NICs.

Choose macvtap as the Network source and virtio as the Device model.

- b) To support RHEL 7, the KVM virtual manager has to support Random Number Generator (RNG) hardware. See the following image for RNG configuration.

Figure 3: New Virtual Hardware



If you are using the CLI to create a new VM, be sure to include the following setting:

```
<rng model='virtio'
  <backend model='random'>/dev/random</backend>
  <address type='pci' domain='0x0000' bus='0x00' slot='0x08' function='0x0' />
</rng>
```

c) Click **Finish**.

Step 8 In the Virtual Machine screen, choose the disk device and under Advanced and Performance Options, choose the following options, and click **Apply**.

Field	Value
Disk bus	VirtIO
Cache mode	none
IO mode	native

Step 9 Click **Begin Installation** to install Cisco ISE on KVM. The Cisco ISE installation boot menu appears.

Step 10 At the system prompt, enter **1** to choose a monitor and keyboard port, or **2** to choose a console port, and press **Enter**.

The installer starts the installation of the Cisco ISE software on the VM. When the installation process finishes, the console displays:

```
Type 'setup' to configure your appliance
localhost:
```

- Step 11** At the system prompt, type **setup** and press **Enter**.
The Setup Wizard appears and guides you through the initial configuration.
-

Microsoft Hyper-V

Create a Cisco ISE Virtual Machine on Hyper-V

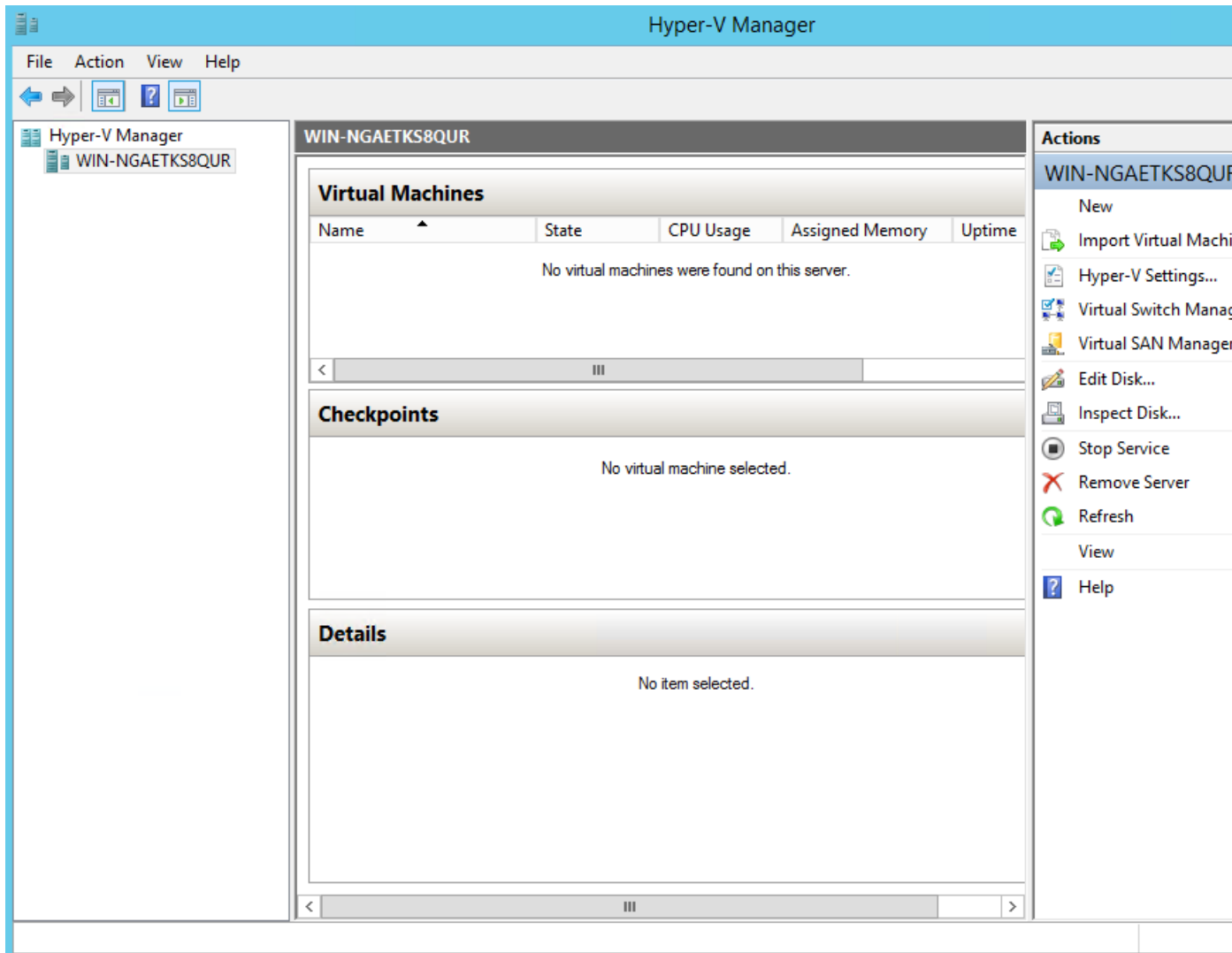
This section describes how to create a new virtual machine, map the ISO image from the local disk to the virtual CD/DVD drive, edit the CPU settings, and install Cisco ISE on Hyper-V.

Before you begin

Download the Cisco ISE ISO image from Cisco.com to your local system.

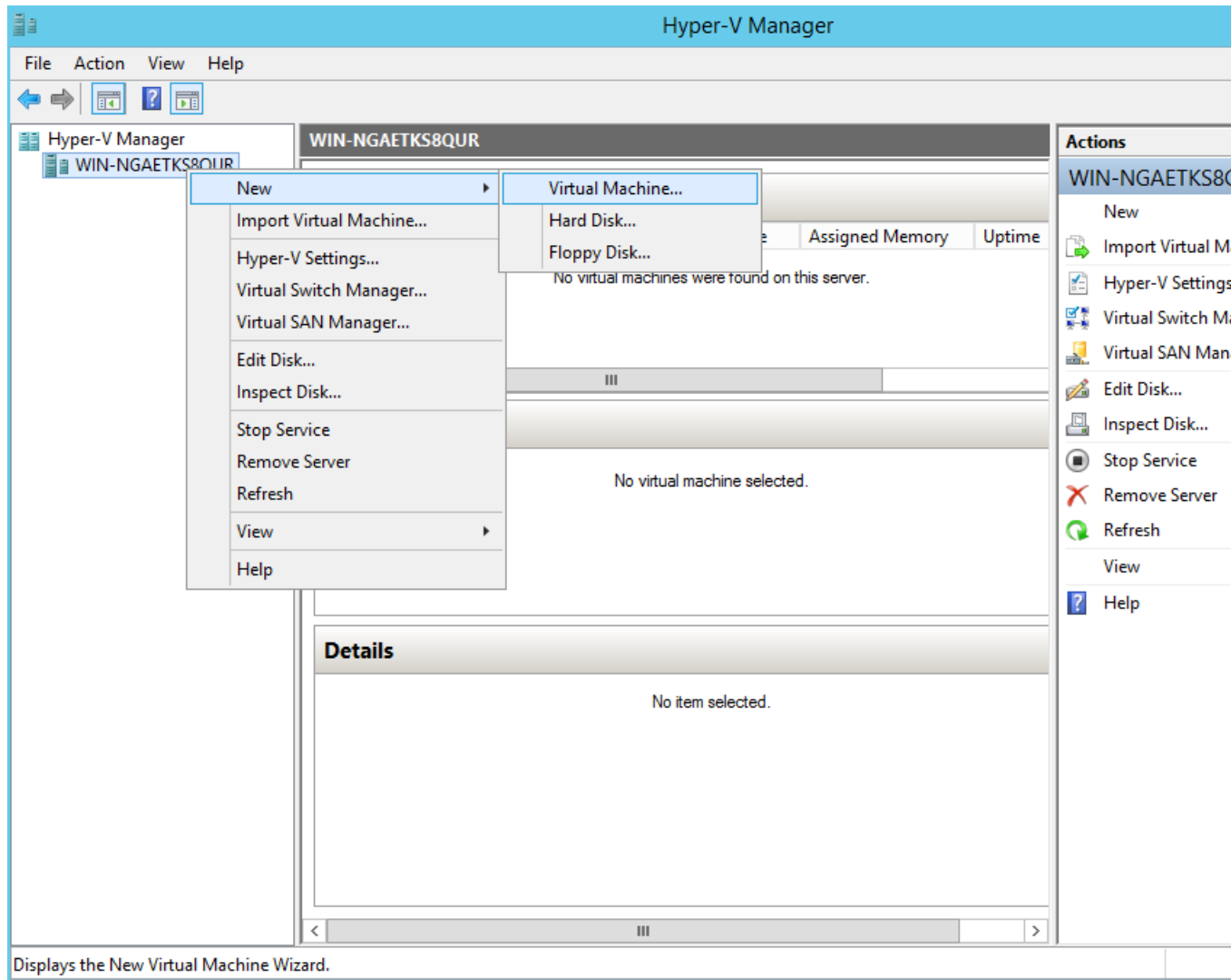
- Step 1** Launch Hyper-V Manager on a supported Windows server.

Figure 4: Hyper-V Manager Console



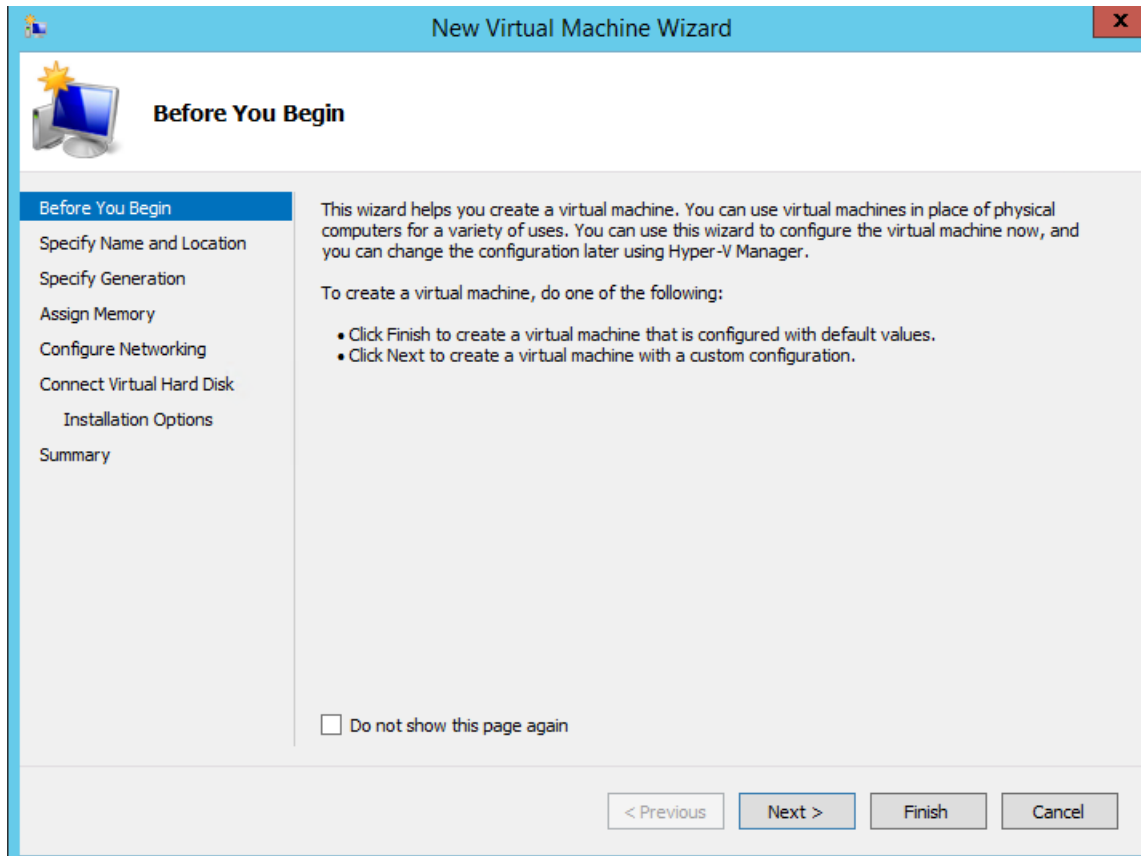
Step 2 Right-click the VM host and click **New > Virtual Machine**.

Figure 5: Create New Virtual Machine



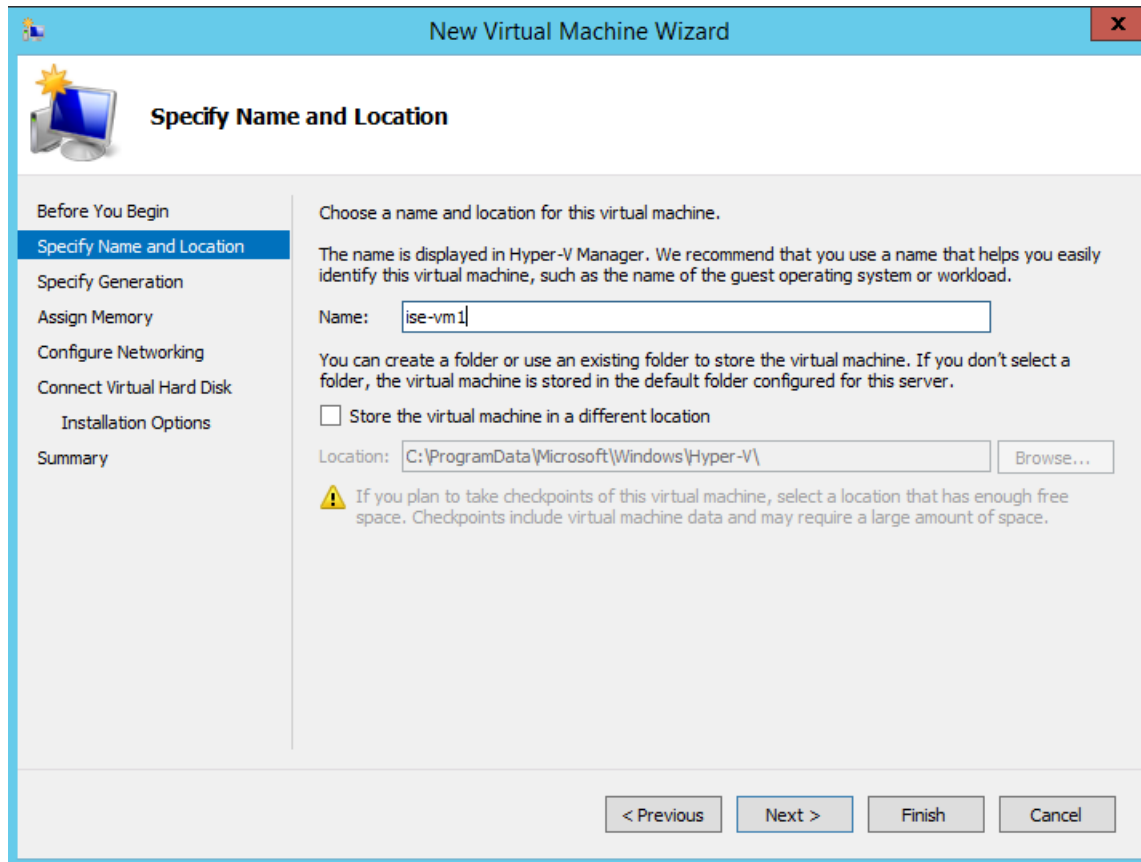
Step 3 Click **Next** to customize the VM configuration.

Figure 6: New Virtual Machine Wizard



Step 4 Enter a name for the VM and (optionally) choose a different path to store the VM, and click **Next**.

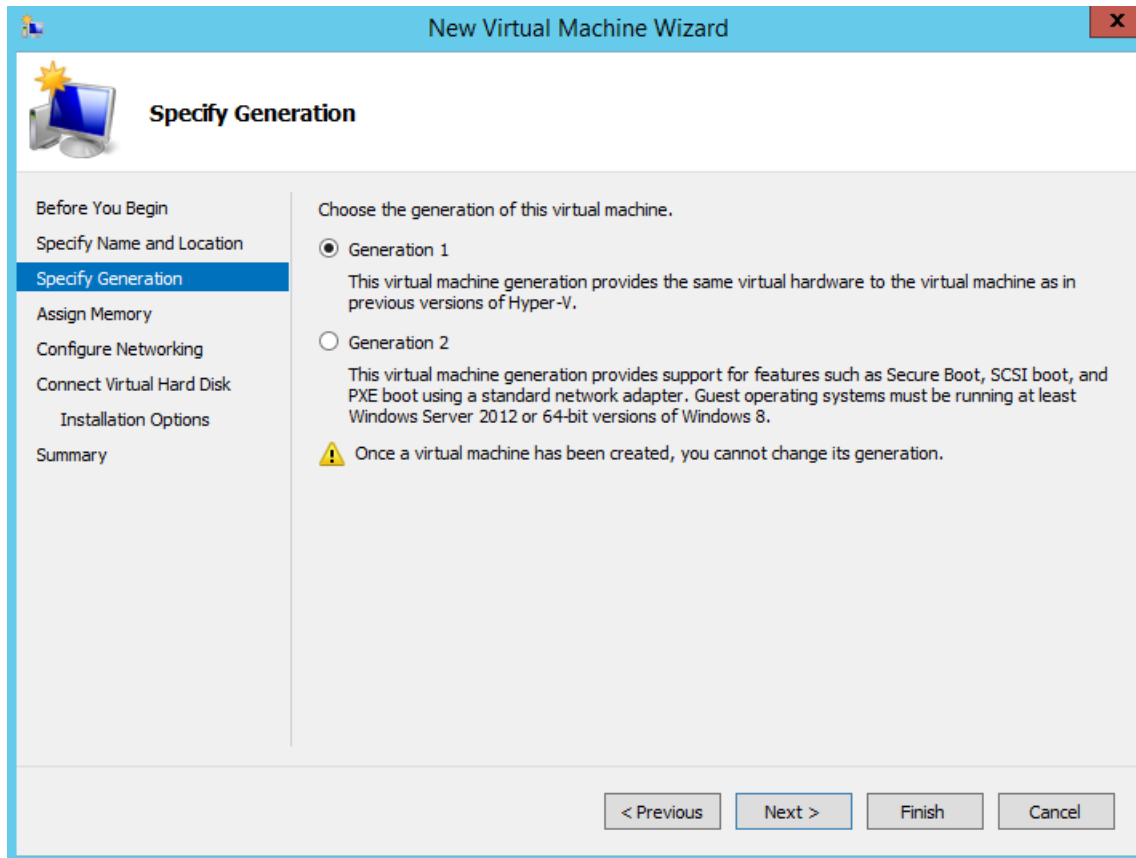
Figure 7: Specify Name and Location



Step 5 Click the **Generation 1** radio button and click **Next**.

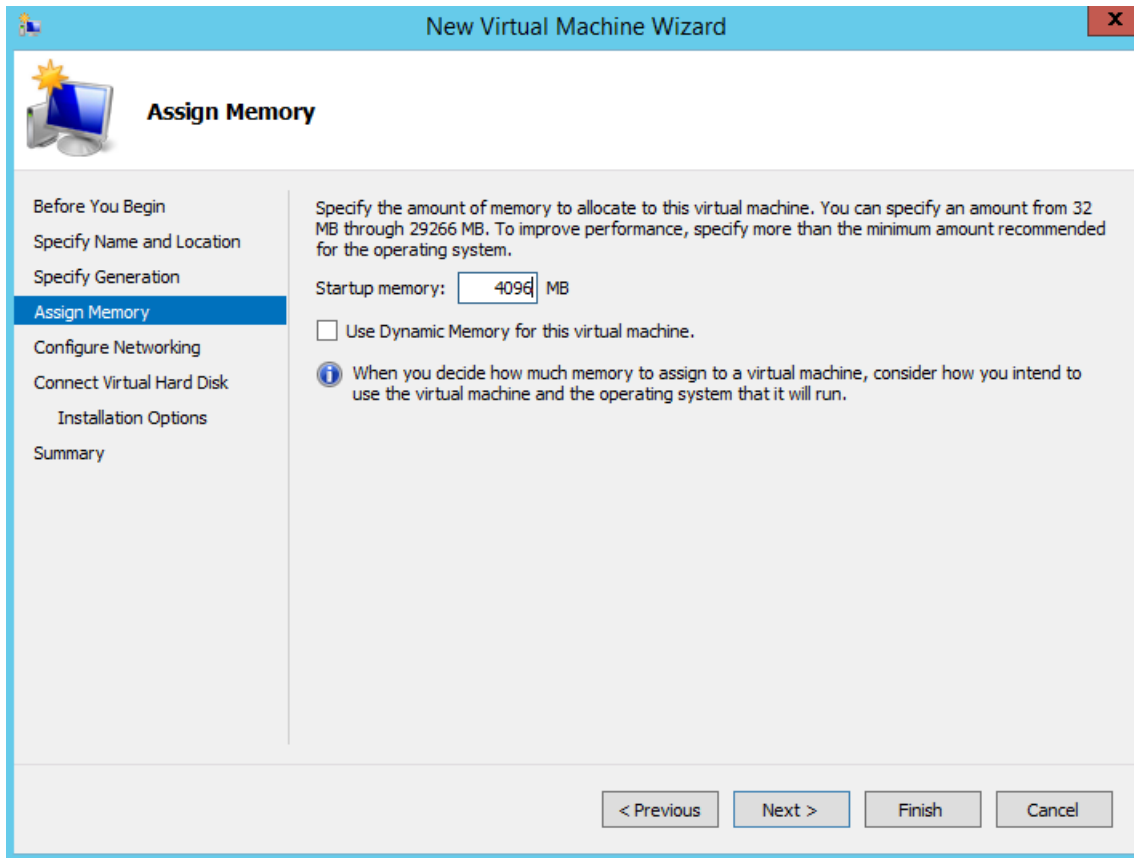
If you choose to create a Generation 2 ISE VM, ensure that you disable the **Secure Boot** option in the VM settings.

Figure 8: Specify Generation



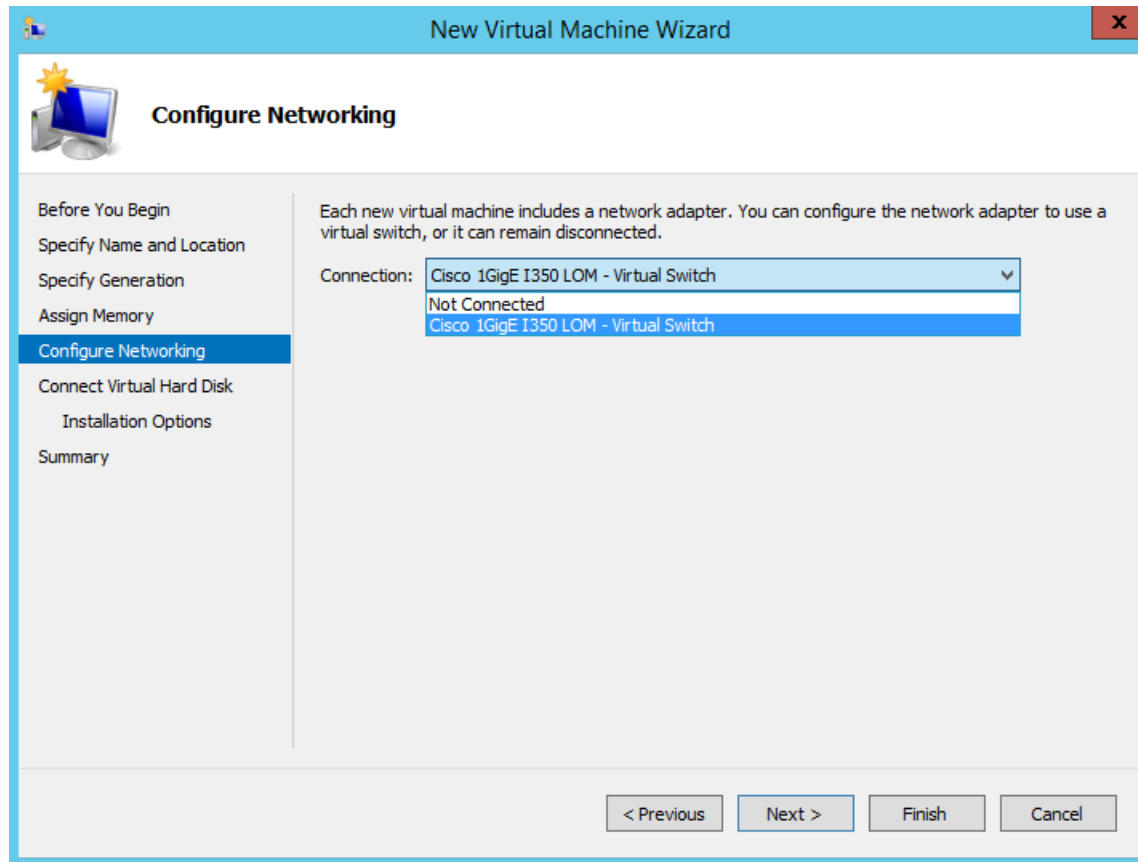
Step 6 Specify the amount of memory to allocate to this VM, for example, 16000 MB, and click **Next**.

Figure 9: Assign Memory



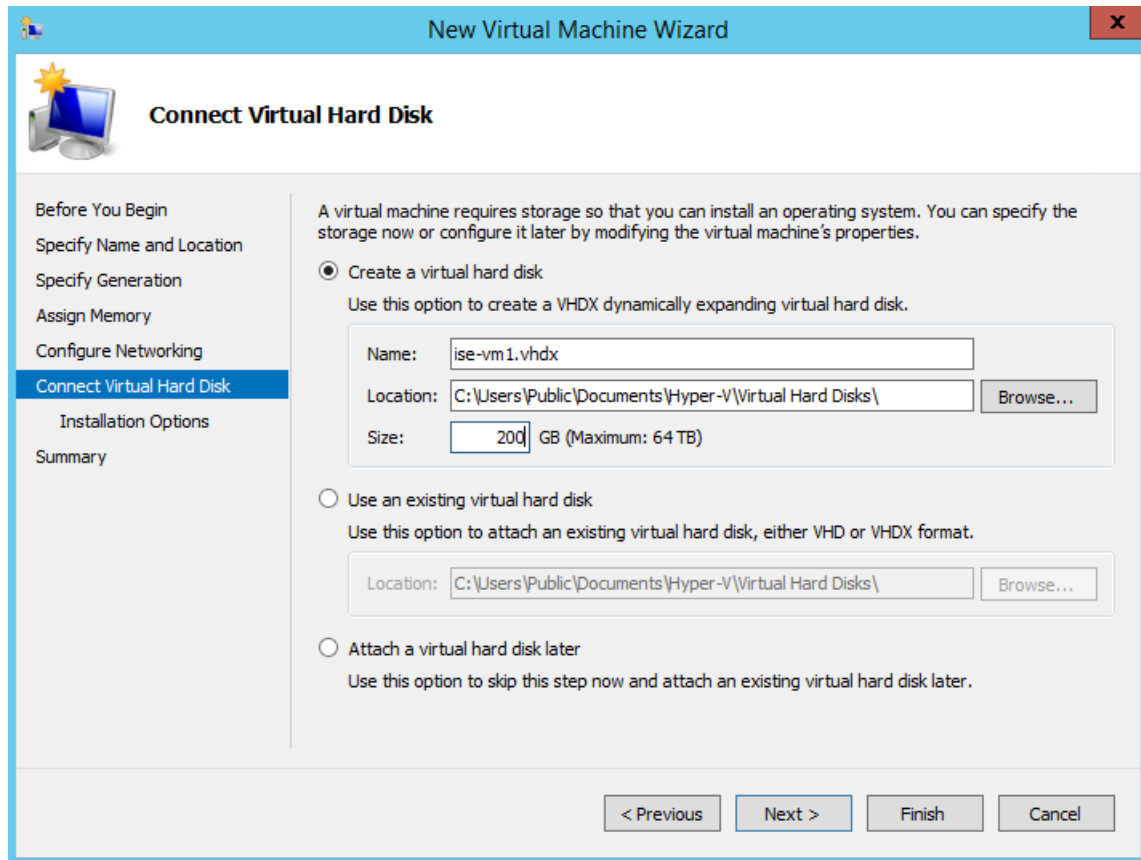
Step 7 Select the network adapter and click **Next**.

Figure 10: Configure Networking



Step 8 Click the **Create a virtual hard disk** radio button and click **Next**.

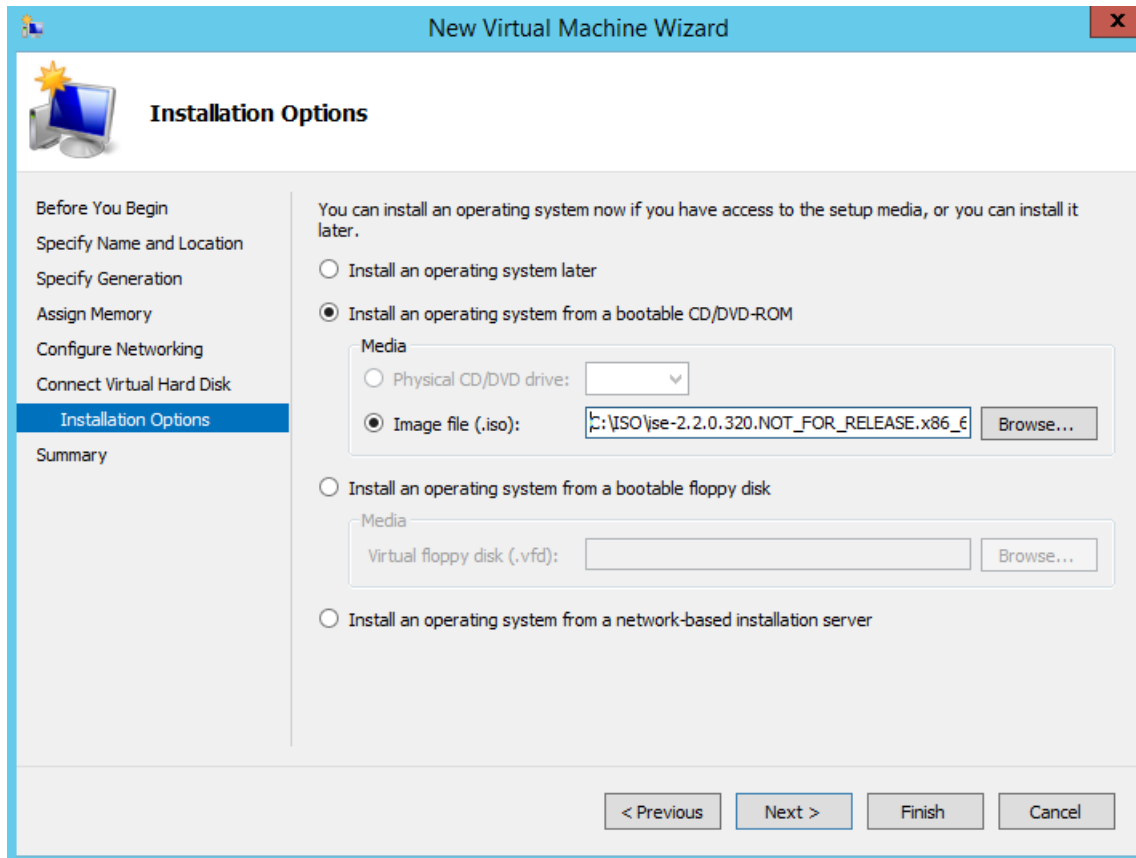
Figure 11: Connect Virtual Hard Disk

**Step 9**

Click the **Install an operating system from a bootable CD/DVD-ROM** radio button.

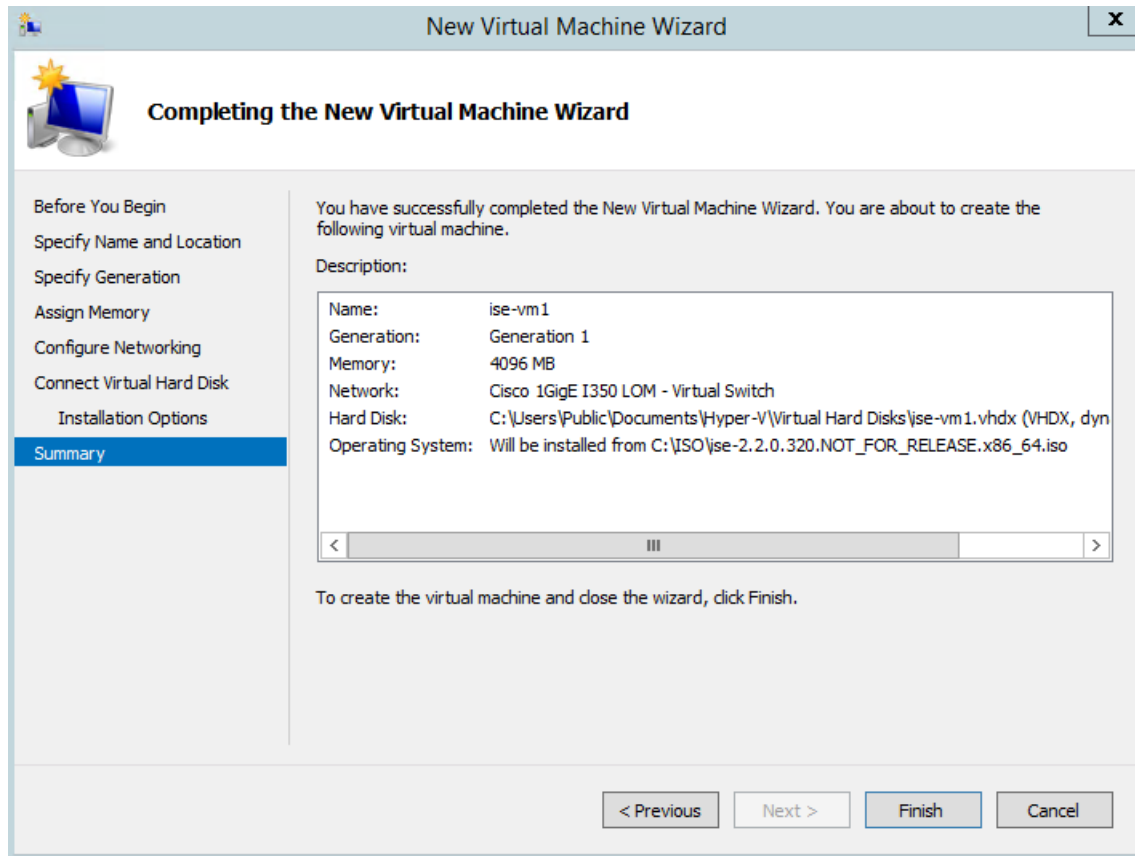
- a) From the Media area, click the **Image file (.iso)** radio button.
- b) Click **Browse** to select the ISE ISO image from the local system and click **Next**.

Figure 12: Installation Options



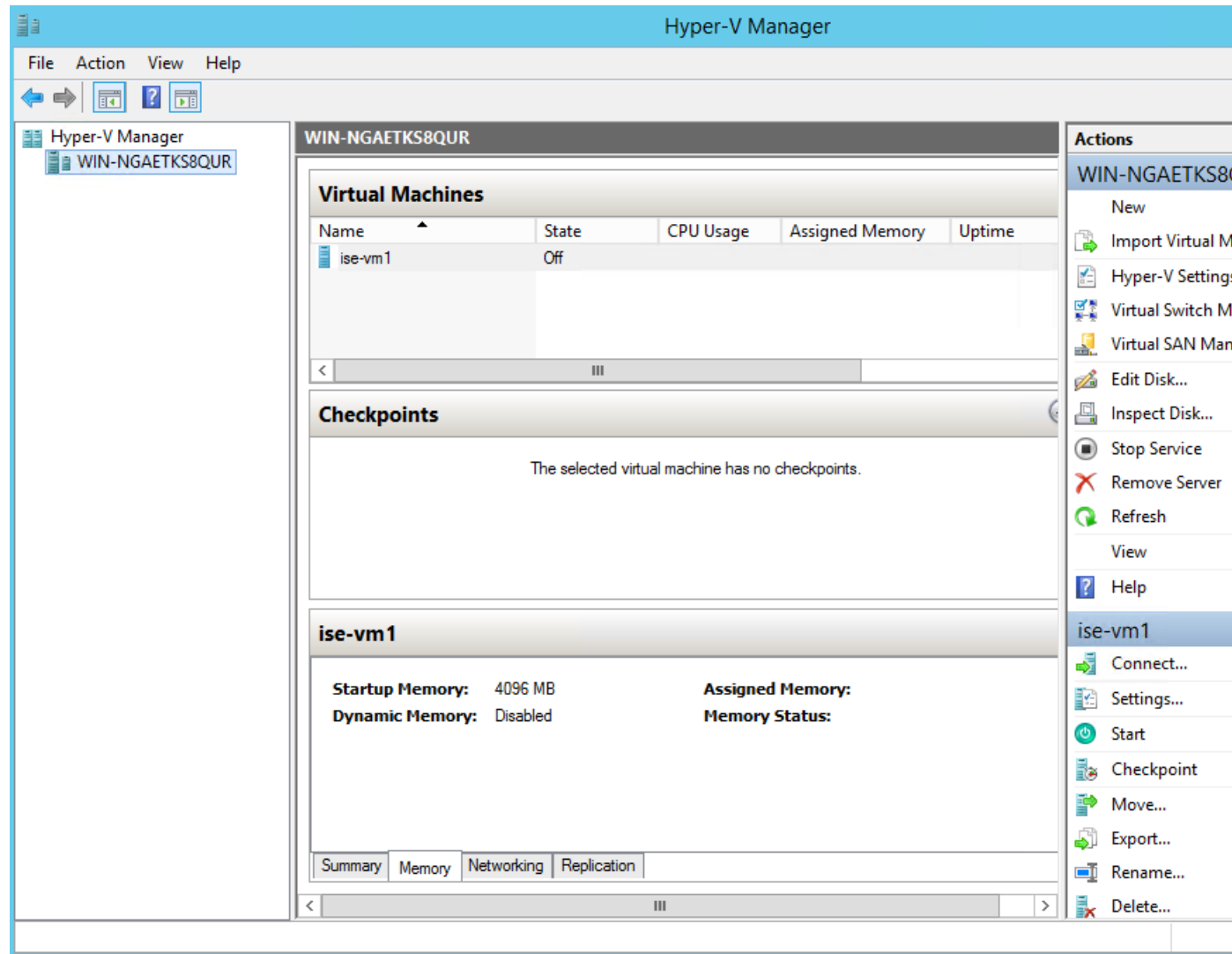
Step 10 Click **Finish**.

Figure 13: Complete the New Virtual Machine Wizard



The Cisco ISE VM is created on Hyper-V.

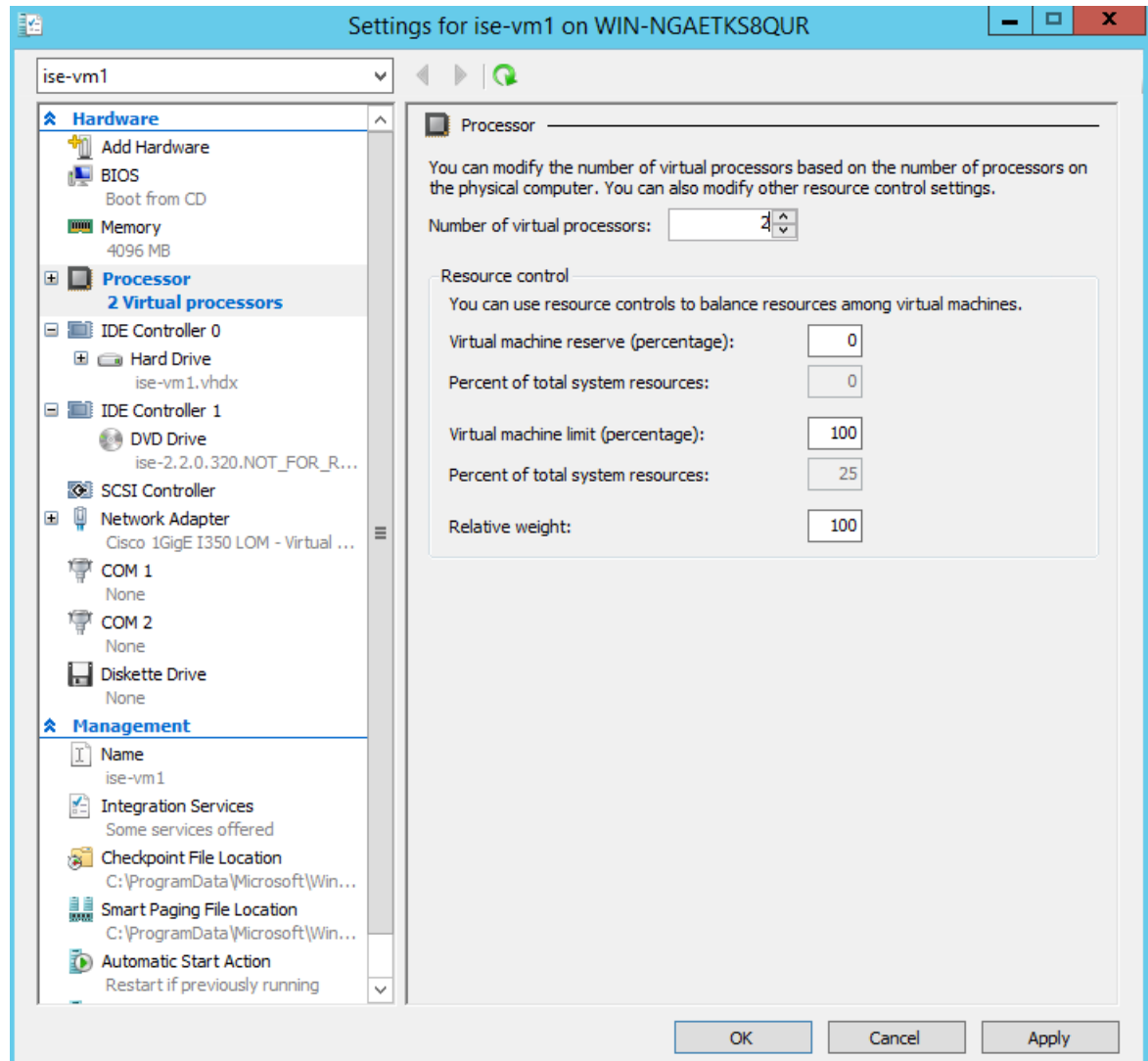
Figure 14: New Virtual Machine created

**Step 11**

Select the VM and edit the VM settings.

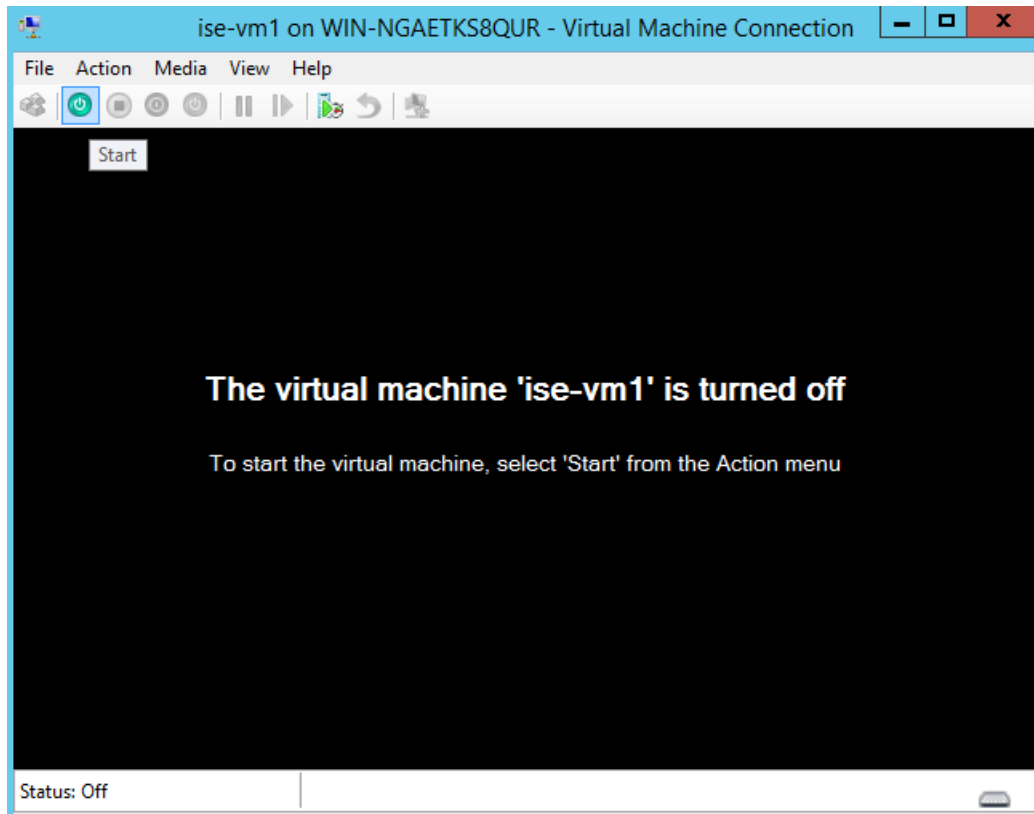
- a) Select **Processor**. Enter the number of virtual processors, for example, 6, and click **OK**.

Figure 15: Edit VM Settings



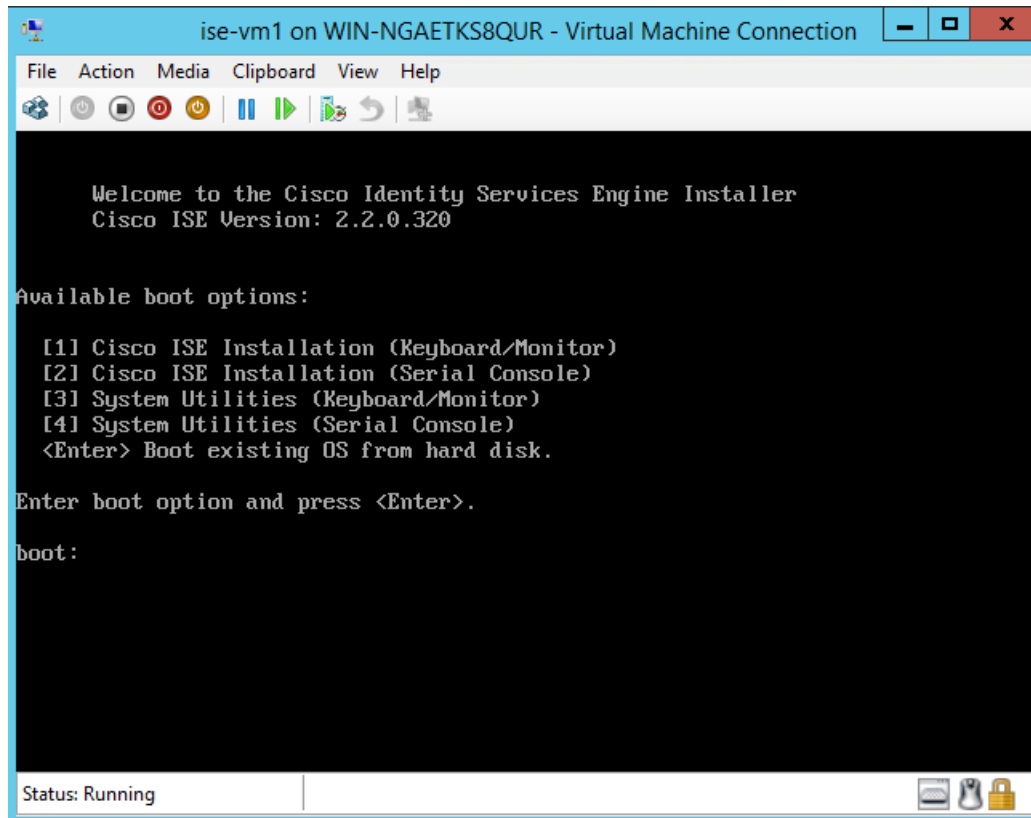
Step 12 Select the VM and click **Connect** to launch the VM console. Click the start button to turn on the Cisco ISE VM.

Figure 16: Start the Cisco ISE VM



The Cisco ISE installation menu appears.

Figure 17: Cisco ISE installation menu



Step 13 Enter 1 to install Cisco ISE using a keyboard and monitor.
