



## Intelligent Application Bypass (IAB)

---

The following topics describe how to configure access control policies to use Intelligent Application Bypass:

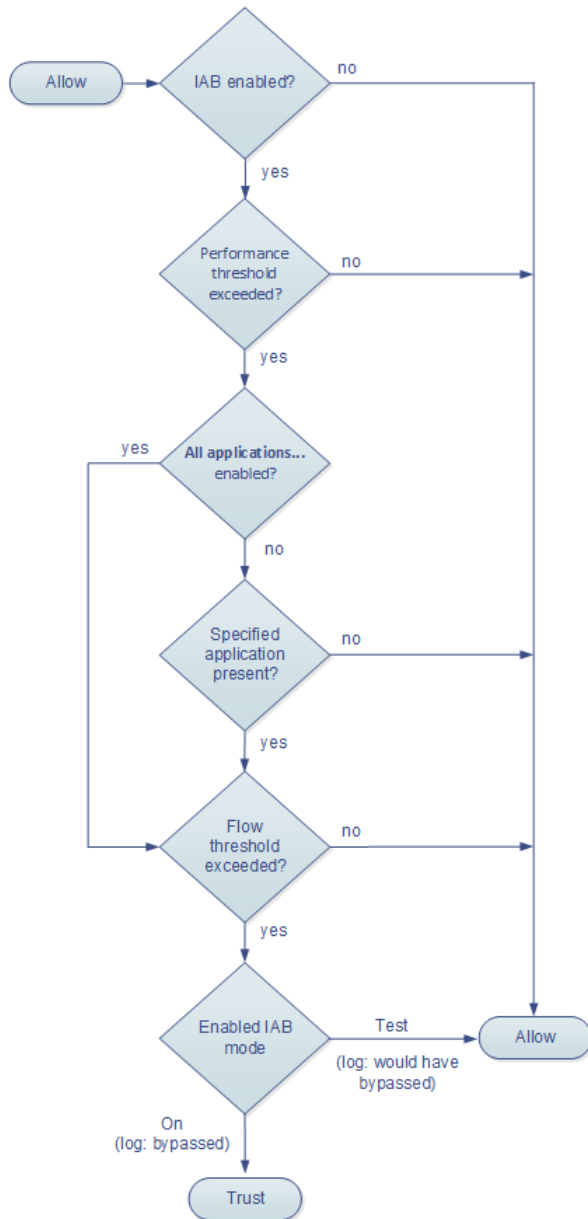
- [Introduction to IAB, page 11-1](#)
- [IAB Options, page 11-2](#)
- [Configuring IAB, page 11-4](#)
- [IAB Logging and Analysis, page 11-5](#)

### Introduction to IAB

*Intelligent Application Bypass (IAB)* identifies applications that you trust to traverse your network without further inspection if performance and flow thresholds are exceeded. For example, if a nightly backup significantly impacts system performance, you can configure thresholds that, if exceeded, trust traffic generated by your backup application. Optionally, you can configure IAB so that, when an inspection performance threshold is exceeded, IAB trusts all traffic that exceeds any flow bypass threshold, regardless of the application type; this option requires a Version 6.0.1.4 or subsequent 6.0.1.x patch.

The system implements IAB on traffic allowed by access control rules or the access control policy's default action, before the traffic is subject to deep inspection. A test mode allows you to determine whether thresholds are exceeded and, if so, to identify the application flows that would have been bypassed if you had actually enabled IAB (called *bypass mode*).

The following graphic illustrates the IAB decision-making process:



418691

## IAB Options

### State

Enables or disables IAB.

### Performance Sample Interval

Specifies the time in seconds between IAB performance sampling scans, during which the system collects system performance metrics for comparison to IAB performance thresholds. A value of 0 disables IAB.

### Bypassable Applications and Filters

This feature provides two mutually exclusive options:

#### Applications/Filters

Provides an editor where you can specify bypassable applications and sets of applications (filters) in essentially the same ways you specify application conditions in access control rules. See [Controlling Application Traffic, page 8-2](#) for more information.

#### All applications including unidentified application

When an inspection performance threshold is exceeded, trusts all traffic that exceeds any flow bypass threshold, regardless of the application type. This option requires a Version 6.0.1.4 or subsequent 6.0.1.x patch.

### Inspection Performance Thresholds

Inspection performance thresholds provide intrusion inspection performance limits that, if exceeded, trigger inspection of flow thresholds. IAB does not use inspection performance thresholds set to 0.



#### Note

---

Inspection performance and flow bypass thresholds are disabled by default. You must enable at least one of each, and one of each must be exceeded for IAB to trust traffic. If you enable more than one inspection performance or flow bypass threshold, only one of each must be exceeded for IAB to trust traffic.

---

#### Drop Percentage

Average packets dropped as a percentage of total packets, when packets are dropped because of performance overloads caused by expensive intrusion rules, file policies, decompression, and so on. This does not refer to packets dropped by normal configurations such as intrusion rules. Note that specifying an integer greater than 1 activates IAB when the specified percentage of packets is dropped. When you specify 1, any percentage from 0 through 1 activates IAB. This allows a small number of packets to activate IAB.

#### Processor Utilization Percentage

Average percentage of processor resources used.

#### Package Latency

Average packet latency in microseconds.

#### Flow Rate

The rate at which the system processes flows, measured as the number of flows per second. Note that this option configures IAB to measure flow *rate*, not flow *count*.

### Flow Bypass Thresholds

Flow bypass thresholds provide flow limits that, if exceeded, trigger IAB to trust bypassable application traffic in bypass mode or allow application traffic subject to further inspection in test mode. IAB does not use flow bypass thresholds set to 0.



#### Note

---

Inspection performance and flow bypass thresholds are disabled by default. You must enable at least one of each, and one of each must be exceeded for IAB to trust traffic. If you enable more than one inspection performance or flow bypass threshold, only one of each must be exceeded for IAB to trust traffic.

---

#### Bytes per Flow

The maximum number of kilobytes a flow can include.

**Packets per Flow**

The maximum number of packets a flow can include.

**Flow Duration**

The maximum number of seconds a flow can remain open.

**Flow Velocity**

The maximum transfer rate in kilobytes per second.

## Configuring IAB

**Caution**

Not all deployments require IAB, and those that do might use it in a limited fashion. Do not enable IAB unless you have expert knowledge of your network traffic, especially application traffic, and system performance, including the causes of predictable performance issues. Before you run IAB in bypass mode, make sure that trusting the specified traffic does not expose you to risk.

---

**To identify applications that you trust to traverse your network when thresholds are exceeded:**


---

**Step 1** In the access control policy editor, click the **Advanced** tab, then click the edit icon (✎) next to **Intelligent Application Bypass Settings**.

If a view icon (👁) appears instead, settings are inherited from an ancestor policy, or you do not have permission to modify the settings. If the configuration is unlocked, uncheck **Inherit from base policy** to enable editing.

**Step 2** Configure IAB options:

- State—Turn IAB **Off** or **On**, or enable IAB in **Test** mode.
- Performance Sample Interval—Enter the time in seconds between IAB performance-sampling scans. If you enable IAB, even in test mode, enter a non-zero value. Entering 0 disables IAB.
- Bypassable Applications and Filters—Choose from:
  - Click the number of bypassed applications and filters and specify the applications whose traffic you want to bypass; specify in essentially the same ways you specify application conditions in access control rules. See [Controlling Application Traffic, page 8-2](#) for more information.
  - Click **All applications including unidentified applications** so that, when an inspection performance threshold is exceeded, IAB trusts all traffic that exceeds any flow bypass threshold, regardless of the application type. This option requires a Version 6.0.1.4 or subsequent 6.0.1.x patch.
- Inspection Performance Thresholds—Click **Configure** and enter at least one threshold value.
- Flow Bypass Thresholds—Click **Configure** and enter at least one threshold value.

You must specify at least one inspection performance threshold and one flow bypass threshold; both must be exceeded for IAB to trust traffic. If you enter more than one threshold of each type, only one of each type must be exceeded. For detailed information, see [IAB Options, page 11-2](#).

**Step 3** Click **OK** to save IAB settings.

**Step 4** Click **Save** to save the policy.

**What to Do Next**

- Deploy configuration changes; see [Deploying Configuration Changes, page 4-11](#).

## IAB Logging and Analysis

IAB forces an end-of-connection event that logs bypassed flows and flows that would have been bypassed, regardless of whether you have enabled connection logging. Connection events indicate flows that are bypassed in bypass mode or that would have been bypassed in test mode. Custom dashboard widgets and reports based on connection events can display long-term statistics for bypassed and would-have-bypassed flows.

**IAB Connection Events****Action**

When **Reason** includes `Intelligent App Bypass`:

**Allow**—indicates that the applied IAB configuration was in test mode and traffic for the application specified by **Application Protocol** remains available for inspection.

**Trust** - indicates that the applied IAB configuration was in bypass mode and traffic for the application specified by **Application Protocol** has been trusted to traverse the network without further inspection.

**Reason**

`Intelligent App Bypass` indicates that IAB triggered the event in bypass or test mode.

**Application Protocol**

This field displays the application protocol that triggered the event.

**Example**

In the following truncated graphic, some fields are omitted. The graphic shows the **Action**, **Reason**, and **Application Protocol** fields for two connection events resulting from different IAB settings in two separate access control policies.

For the first event, the `Trust` action indicates that IAB was enabled in bypass mode and Bonjour protocol traffic was trusted to pass without further inspection.

For the second event, the `Allow` action indicates that IAB was enabled in test mode, so Ubuntu Update Manager traffic was subject to further inspection but would have been bypassed if IAB had been in bypass mode.

Action ×	Reason ×	Application × Protocol
<code>Trust</code>	<code>Intelligent App Bypass</code>	<code>Bonjour</code>
<code>Allow</code>	<code>Intelligent App Bypass</code>	<code>Ubuntu Update Manager</code>

**Example**

In the following truncated graphic, some fields are omitted. The flow in the second event was both bypassed (**Action**: `Trust`; **Reason**: `Intelligent App Bypass`) and inspected by an intrusion rule (**Reason**: `Intrusion Monitor`). The `Intrusion Monitor` reason indicates that an intrusion rule set

to **Generate Events** detected but did not block an exploit during the connection. In the example, this happened before the application was detected. After the application was detected, IAB recognized the application as bypassable and trusted the flow.

Last Packet ×	Action ×	Reason ×	Application × Protocol
2015-06-12 10:53:09	Trust	Intelligent App Bypass	<input type="checkbox"/> Skype Probe
2015-06-12 10:53:08	Trust	Intelligent App Bypass, Intrusion Monitor	<input type="checkbox"/> HTTP

404434

### IAB Custom Dashboard Widgets

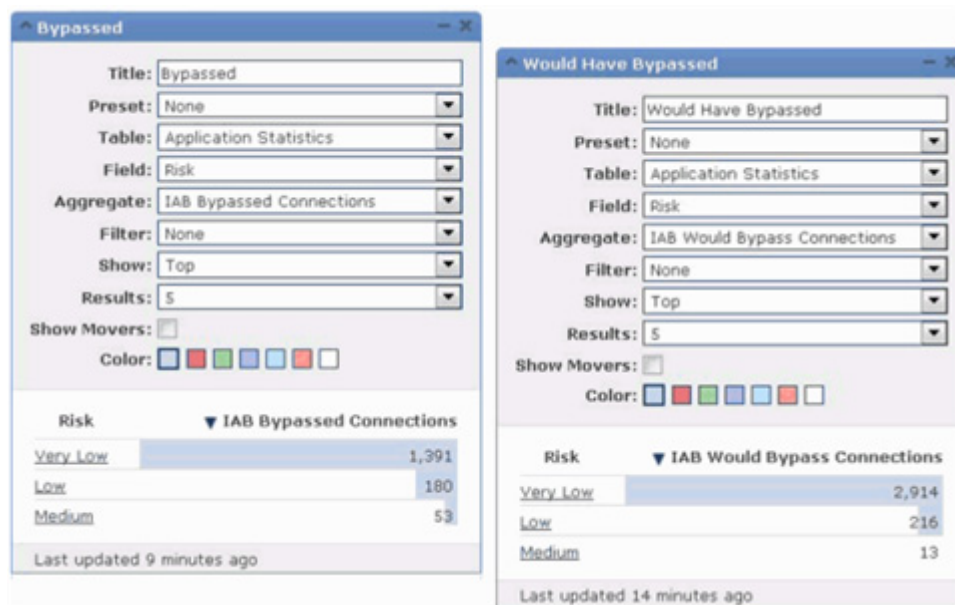
You can create a Custom Analysis dashboard widget to display long-term IAB statistics based on connection events. Specify the following when creating the widget:

- **Preset:** None
- **Table:** Application Statistics
- **Field:** any
- **Aggregate:** either of:
  - IAB Bypassed Connections
  - IAB Would Bypass Connections
- **Filter:** any

### Examples

In the following Custom Analysis dashboard widget examples:

- The *Bypassed* example shows statistics for application traffic bypassed because the applications were specified as bypassable and IAB was enabled in bypass mode in the deployed access control policy.
- The *Would Have Bypassed* example shows statistics for application traffic that would have been bypassed because the applications were specified as bypassable and IAB was enabled in test mode in the deployed access control policy.



404434

### IAB Custom Reports

You can create a custom report to display long-term IAB statistics based on connection events. Specify the following when creating the report:

- **Table:** Application Statistics
- **Preset:** None
- **Filter:** any
- **X-Axis:** any
- **Y-Axis:** either of:
  - IAB Bypassed Connections
  - IAB Would Bypass Connections

### Examples

The following graphic shows two abbreviated report examples:

- The *Bypassed* example shows statistics for application traffic bypassed because the applications were specified as bypassable and IAB was enabled in bypass mode in the deployed access control policy. The *Would Have Bypassed* example shows statistics for application traffic that would have been bypassed because the applications were specified as bypassable and IAB was enabled in test mode in the deployed access control policy.



