



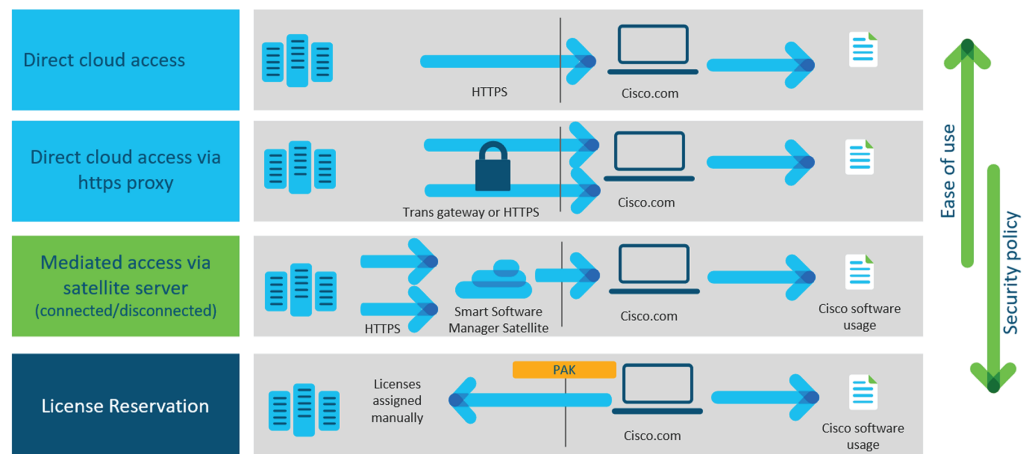
# Introduction

- [Introduction, on page 1](#)

## Introduction

When you install Cisco Cyber Vision for the first time you get a 90-day trial. Once the trial expires, a connection to the cloud is required so components can be counted and billed in order to continue using Cisco Cyber Vision. Different options exist to get a license depending on the network configuration, its network policy, and whether there is a third-party service provider involved.

An online environment can benefit from a direct connection to the cloud, possibly through a proxy, whereas an offline environment will require an additional license reservation. Industrial networks with many Cisco Cyber Vision Centers to manage may be equipped with a local satellite and use Cisco Smart Software Manager Satellite On-Prem as licensing service. Likewise, customers dealing with a third-party service provider must use a local On-Prem satellite, but under the Managed Service License Agreement.



### Smart Licensing Services:

- Cisco Smart Software Manager (CSSM): licensing service located in the cloud.
- Cisco Smart Software Manager Satellite On-Prem (CSSM On-Prem): a local service, also named satellite, which connects to the cloud for license requests.

**Online registration:** flexible security policy, ease of use. A number of Cisco Cyber Vision credits is purchased through a Smart Account and any Center from the package can use these credits. To retrieve a license and ensure credit management, the Cisco Cyber Vision Center sends usage information to the cloud directly over the internet or via a https proxy. No additional components are required for this connection mode. Access: CSSM or CSSM On-Prem.

**Offline registration:** strong security policy. As opposed to online registration, the association credits-Center is done manually by the user. Getting a license requires the License Reservation feature to be enabled and information to be copied and pasted between Cisco Cyber Vision and cisco.com. The procedure to get a license is described in the [Offline licensing](#) section. Access: CSSM or CSSM On-Prem.

**Managed Service License Agreement:** MSLA is a buying program used whenever there is a third-party service provider involved (i.e. the environment can be whether online or offline). This mode requires the use of Cisco Smart Software Manager Satellite On-Prem, which is an on-site license server through which the license request is done to cisco.com. The procedure to retrieve a license is very similar to the online one and are described under the same section. Access: CSSM On-Prem.

**On-Prem registration:** On-Prem registration is also available without MSLA, especially useful in industrial networks with numerous Centers to manage. Each Cisco Cyber Vision Center sends usage information to a locally installed appliance named satellite. Information with cisco.com is sent periodically to keep the satellite in synchronization. This synchronization can occur automatically in connected environments or manually in disconnected environments. Access: CSSM On-Prem.

License registration mode	Transport modes
Online	Direct to cisco.com
	Direct to cisco.com via proxy
	On-Prem (satellite)
Offline	Direct to cisco.com with License Reservation
	On-Prem (satellite)
MSLA (online/offline)	On-Prem (satellite)




---

**Important**

As the installation procedure for online licensing, MSLA and On-Prem (satellite) are very close, they are grouped under the same section. Refer to the [Online licensing/MSLA/On-Prem](#) section.

---

