



# Home

- [Home, on page 1](#)

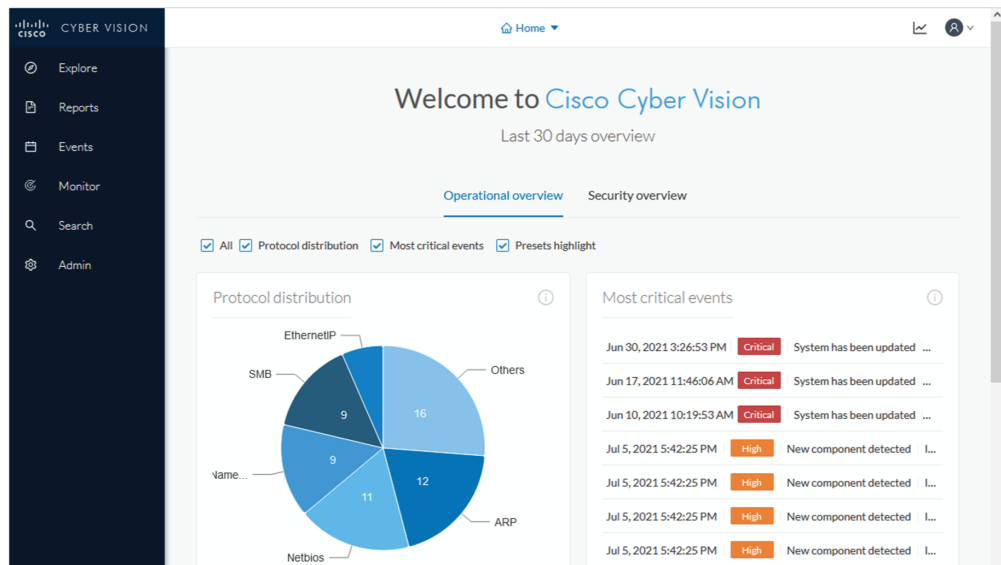
## Home

This page is where you'll land as logging in Cisco Cyber Vision.

The home page displays an operational and a security overview of the industrial network over the last month.

You can edit which information is displayed by ticking/unticking the different boxes available.

In the operational overview, you will find a pie chart with the protocol distribution and a list of the most critical events.



Below, a preset highlight you can edit to display your favorite presets.

Presets highlights

[☆ Edit favorite presets](#)

Preset	Risk score	Last precomputation	Devices	Vulnerabilities	Events
<a href="#">All Controllers</a>	45	Jul 8, 2021 11:32:22 AM	5	42	12
<a href="#">Broadcast traffic only</a>	45	Jul 8, 2021 11:31:58 AM	7	31	0
<a href="#">IT Activities</a>	45	Jul 8, 2021 11:31:51 AM	8	52	16
<a href="#">IT Devices</a>	45	Jul 8, 2021 11:32:01 AM	6	0	16
<a href="#">Internet Activities</a>	Unknown	Jul 8, 2021 11:31:58 AM	0	0	0
<a href="#">OT Devices</a>	45	Jul 8, 2021 11:31:57 AM	4	20	1
<a href="#">Risky devices</a>	63	Jul 8, 2021 10:59:37 AM	3	42	2

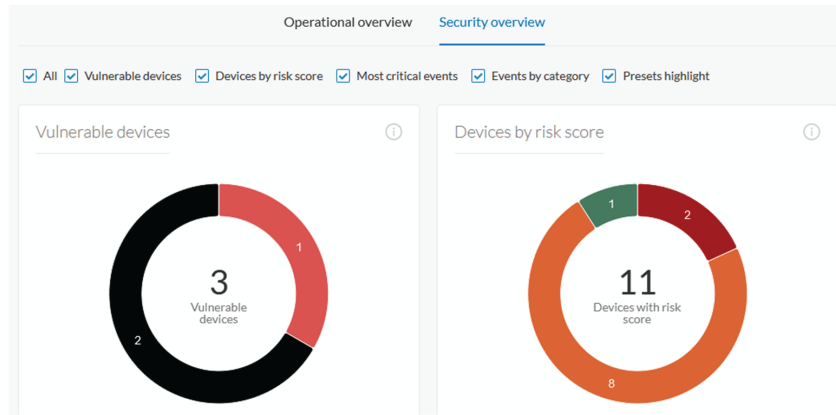
EDIT FAVORITE PRESETS

Select favorite presets

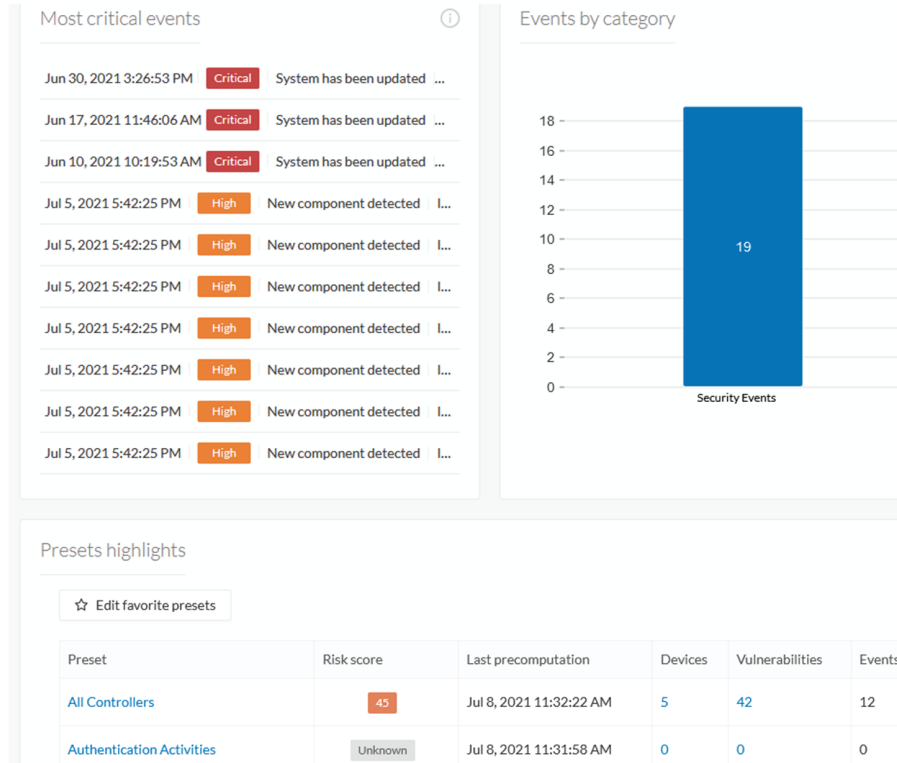
- Presets
- + My preset
- + Basics
- Asset management
- OT Devices
- IT Devices
- IT Infrastructure Devices
- All Microsoft Windows systems
- All Controllers
- + Control Systems Management
- + IT Communication Management
- + Security
- + Network Management

[Save](#) [Cancel](#)

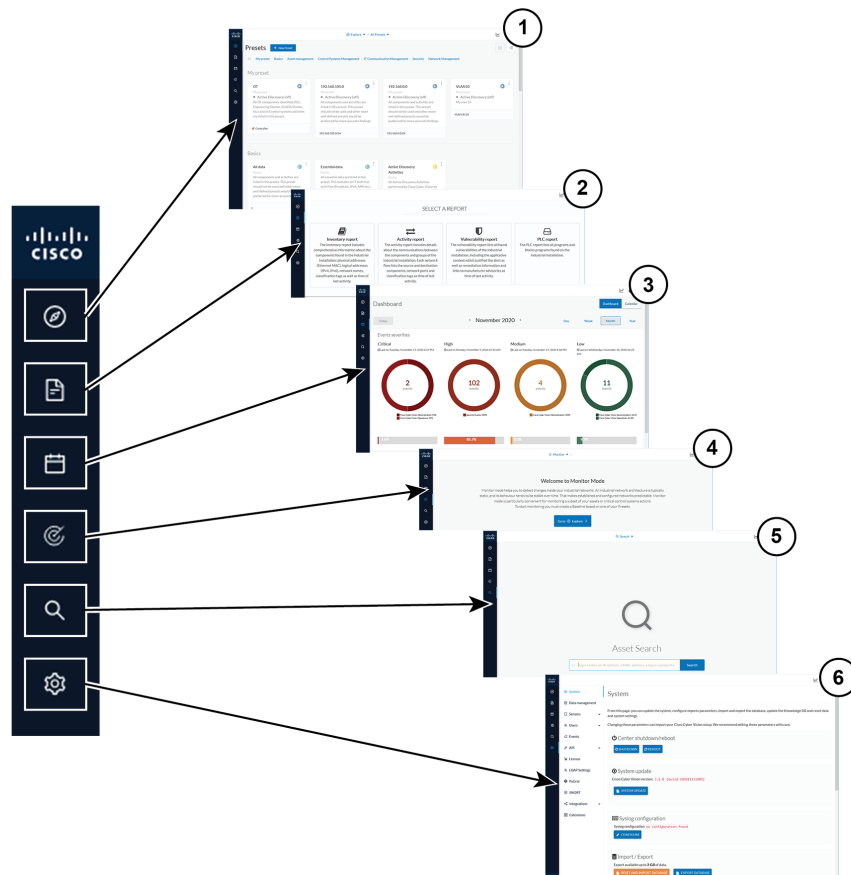
In the security overview, you will find a pie chart representing the vulnerable devices per severities, and a pie chart representing the devices per risk score.



Below, a list of the most critical events, and events classified per category, as well as a preset highlight that you can edit.



The navigation bar on the left gives access to all other main pages of Cisco Cyber Vision:



- Explore (1): This button leads to the overview of [all presets](#) by defaults or configured.
- Reports (2): This button leads to the [Reports page](#) to export valuable information about the industrial network.
- Events (3): This button leads to the [Events page](#) which contains graphics and a calendar of all events generated by Cisco Cyber Vision.
- Monitor (4): This button leads to the [Monitor mode](#) to perform and automatize data comparisons of the industrial network.
- Search (5): This button leads to the [searching area](#) to look for precise data in the industrial network.