



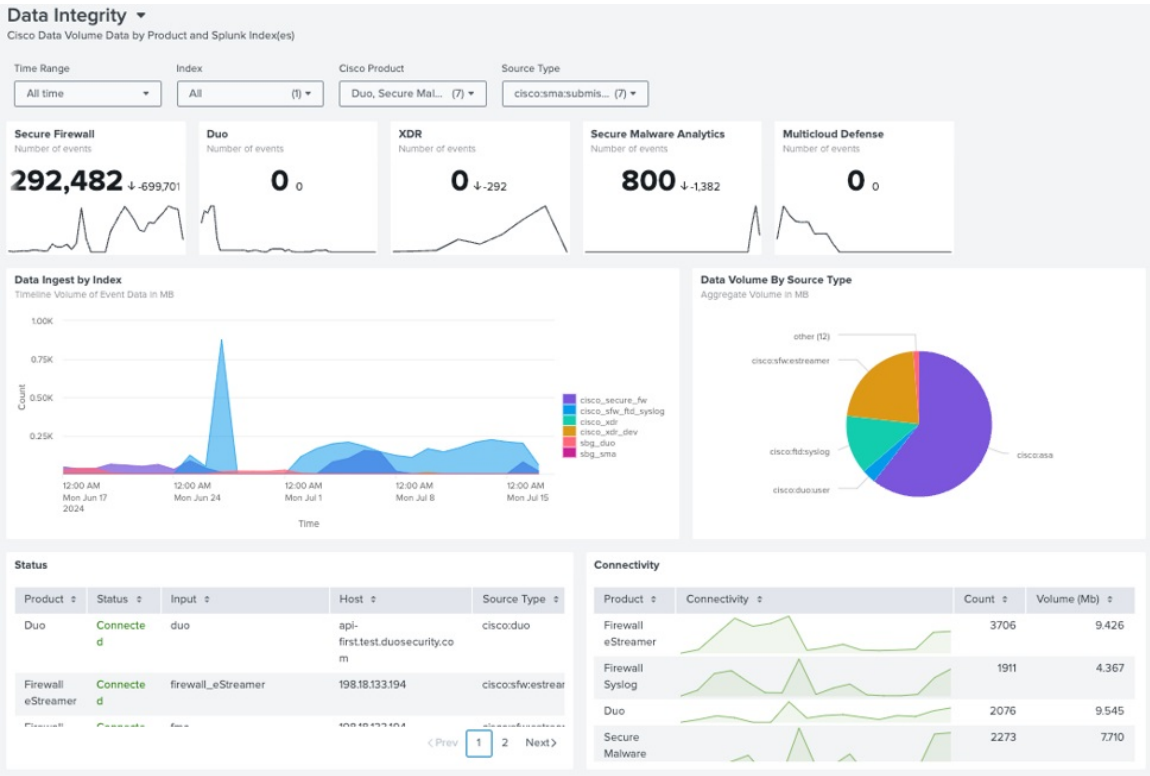
Monitor Dashboards

- [Data Integrity Dashboard](#), on page 1
- [Resource Utilization Dashboard](#), on page 2

Data Integrity Dashboard

The Data Integrity dashboard serves as a centralized hub for monitoring the health and flow of data from the inputs that you have created. The dashboard provides you with a comprehensive view of the statistics and status of each application's data, ensuring that you have the insights that are needed to maintain the integrity and reliability of your security environment.

Figure 1: Data Integrity Dashboard



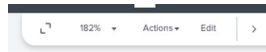
Data Integrity Dashboard Specifics

- You can filter data using the **Time Range**, **Index**, **Cisco Product**, or **Source Type** filters:
 - Time Range:** defines the time for which you would like to see data. Works with all tiles on the dashboard.
 - Index:** indexes that you've used while creating inputs on the Configuration Application pages. The filter works only with the Event count cards located at the top of the page. It shows "0" on all other cards.
 - Cisco Product:** allows to filter data by Product Name. Works with all tiles on the dashboard, except Event count cards.
 - Source Type:** source types that were used while creating inputs on the Configuration Application pages. Works with all tiles on the dashboard, except Event count cards.
- The **Data Integrity** dashboard is XML-based.

To edit the dashboard, click the **Edit** button.



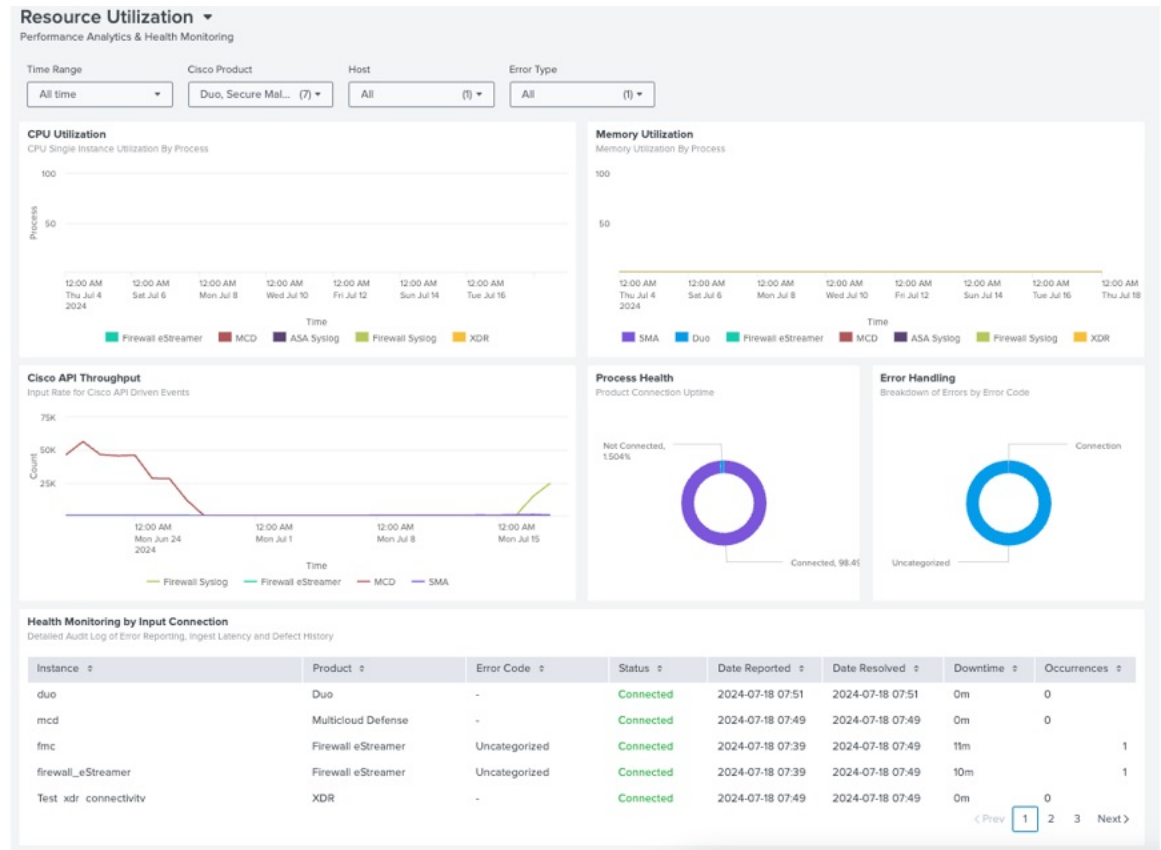
Note This action will only affect the existing user.



Resource Utilization Dashboard

The **Resource Utilization** dashboard is a vital component of Security Cloud App. It provides a detailed account of the performance and monitors the health of the inputs that you have created. **Resource Utilization** dashboard is instrumental in ensuring that your security infrastructure is running optimally and that resources are being used effectively.

Figure 2: Resource Utilization Dashboard



Resource Utilization dashboard Specifics

- You can filter data using the **Time Range**, **Index**, **Cisco Product**, or **Source Type** filters:
 - Time Range**: defines the time for which you would like to see data.
 - Cisco Product**: allows to filter data by Product Name.
 - Host**: allows to filter data by Host.
 - Error type**: allows to filter data by the type of error.
- The **Resource Utilization** dashboard is XML-based.

To edit the dashboard, click the **Edit** button.



Note

This action will only affect the existing user.

