



# Cisco Secure Dynamic Attributes Connector

The following topics discuss how to configure and use the Cisco Secure Dynamic Attributes Connector.

- [About the Cisco Secure Dynamic Attributes Connector](#) , on page 1
- [About the Dashboard](#), on page 4
- [Create a Connector](#), on page 10
- [Create an Adapter](#), on page 29
- [Create Dynamic Attributes Filters](#), on page 32
- [Use Dynamic Objects in Access Control Policies](#), on page 34
- [Troubleshoot the Cisco Secure Dynamic Attributes Connector](#), on page 36

## About the Cisco Secure Dynamic Attributes Connector

The dynamic attributes connector enables your access control policy to adapt in real time to the changes in public and private cloud workloads and business-critical software-as-a-service (SaaS) applications. It simplifies policy management by keeping rules up to date without tedious manual updates and policy deployment. Customers require policy rules to be defined based on non-network constructs such as VM name or security group, so that firewall policy is persistent even when the IP address or VLAN changes.

### Supported connectors

We currently support:

**Table 1: List of supported connectors by Cisco Secure Dynamic Attributes Connector version and platform**

CSDAC version/platform	AWS	AWS security groups	AWS service tags	Azure	Azure Service Tags	Cisco Cyber Vision	Cisco Multicloud Defense	Generic text	GitHub	Google Cloud	Microsoft Office 365	vCenter	Webex	Zoom
Version 1.1 (on-premises)	Yes	No	No	Yes	Yes	No	No	No	No	No	Yes	Yes	No	No
Version 2.0 (on-premises)	Yes	No	No	Yes	Yes	No	No	No	No	Yes	Yes	Yes	No	No
Version 2.2 (on-premises)	Yes	No	No	Yes	Yes	No	No	No	Yes	Yes	Yes	Yes	No	No
Version 2.3 (on-premises)	Yes	No	No	Yes	Yes	No	No	No	Yes	Yes	Yes	Yes	Yes	Yes

CSDAC version/platform	AWS	AWS security groups	AWS service tags	Azure	Azure Service Tags	Cisco Cyber Vision	Cisco Multicloud Defense	Generic text	GitHub	Google Cloud	Microsoft Office 365	vCenter	Webex	Zoom
Version 3.0 (on-premises)	Yes	Yes	Yes	Yes	Yes	Yes	No	Yes	Yes	Yes	Yes	Yes	Yes	Yes
Cloud-delivered (Security Cloud Control)	Yes	Yes	Yes	Yes	Yes	Yes	Yes	Yes	Yes	Yes	Yes	No	Yes	Yes

More information about connectors:

- Amazon Web Services (AWS)

For more information, see a resource like [Tagging AWS resources on the Amazon documentation site](#).

See [Amazon Web Services Connector—About User Permissions and Imported Data](#)

- Cisco Cyber Vision

See [Create a Cisco Cyber Vision Connector, on page 21](#).

- Cisco Multicloud Defense

See [Create a Multicloud Defense Connector, on page 20](#).

- Generic text list of IP addresses you specify

For more information, see [Create a Generic Text Connector, on page 22](#).

- GitHub

For more information, see [Create a GitHub Connector, on page 23](#).

- Google Cloud

For more information, see [Setting Up Your Environment](#) in the Google Cloud documentation.

See [Google Cloud Connector—About User Permissions and Imported Data, on page 24](#).

- Microsoft Azure

For more information, see [this page](#) on the Azure documentation site.

See [Azure Connector—About User Permissions and Imported Data](#).

- Microsoft Azure service tags

For more information, see a resource like [Virtual network service tags on Microsoft TechNet](#).

See [Create an Azure Service Tags Connector, on page 19](#)

- Office 365 IP addresses

For more information, see [Office 365 URLs and IP address ranges](#) on docs.microsoft.com.

- VMware categories and tags managed by vCenter and NSX-T

For more information, see a resource like [vSphere Tags and Attributes in the VMware documentation site](#).

- Webex IP addresses

For more information, see [Create a Webex Connector, on page 28](#).

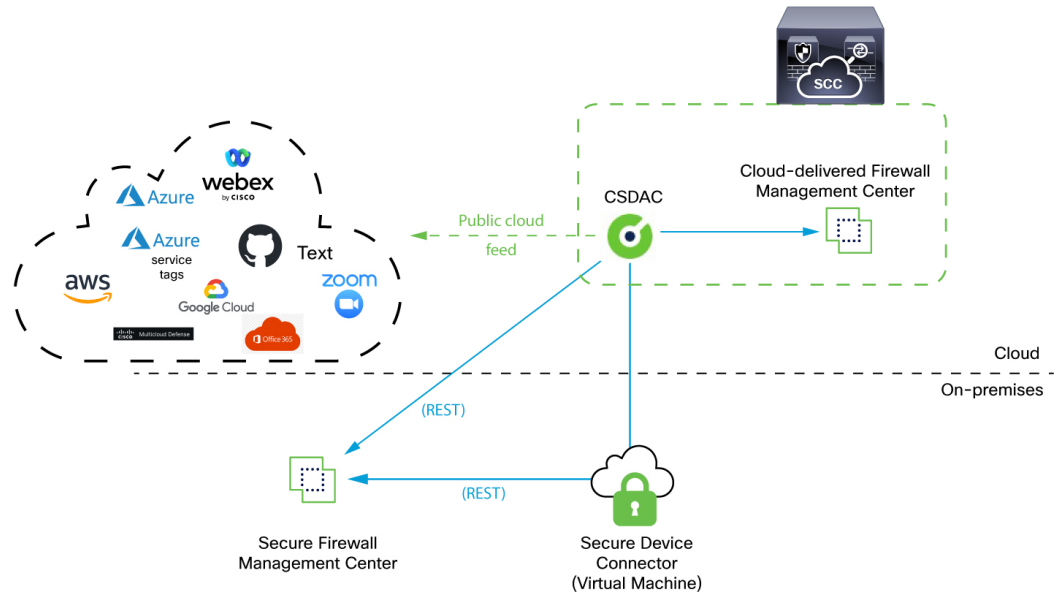
- Zoom IP addresses

For more information, see [Create a Zoom Connector, on page 29](#).

## How It Works

This topic discusses the architecture of the Cisco Secure Dynamic Attributes Connector.

The following figure shows how the system functions at a high level.



- The system supports certain public cloud providers.

This topic discusses supported *connectors* (which are the connections to those providers).

- The dynamic attributes connector is provided with Security Cloud Control; it includes a Cloud-Delivered Firewall Management Center adapter and you can connect to an On-Prem Firewall Management Center using the Secure Device Connector.

For more information about the Secure Device Connector, see [Secure Device Connector \(SDC\)](#).

- The *adapter* defined by the dynamic attributes connector receives those dynamic attributes filters as *dynamic objects* and enables you to use them in access control rules.

You can create the following types of adapters:

- *On-Prem Firewall Management Center* for an on-premises device.

This type of device might be managed by Security Cloud Control or it might be a standalone.

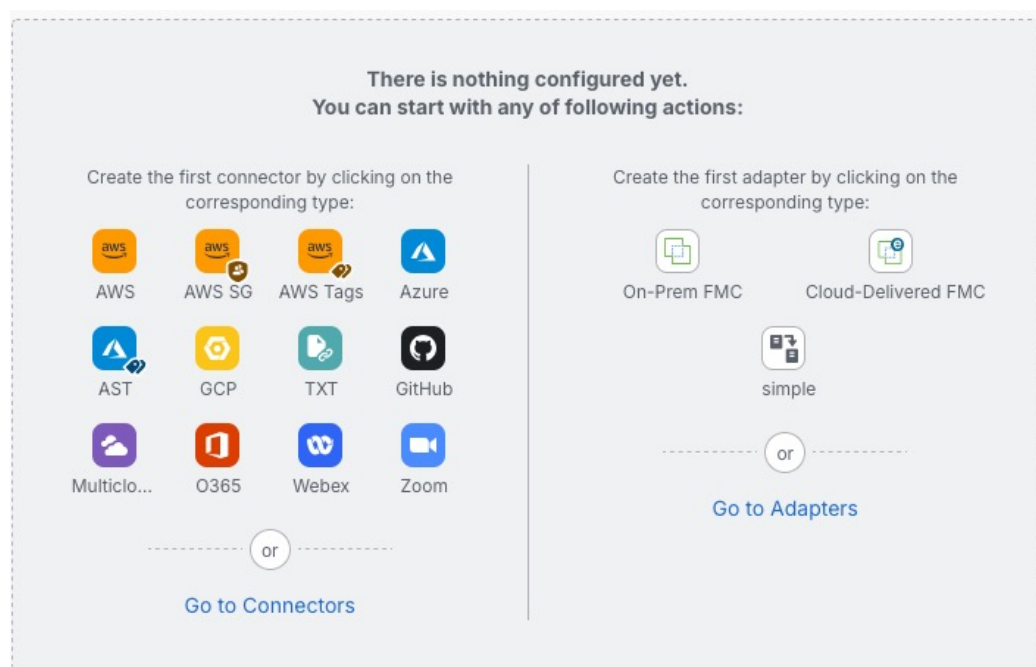
- *Cloud-Delivered Firewall Management Center* for devices managed by Security Cloud Control.

## About the Dashboard

To access the Cisco Secure Dynamic Attributes Connector Dashboard, log in to Security Cloud Control and click **Administration > Dynamic Attributes Connector** at the top of the page.

We also have the Cisco Identity Controller, which currently enables you to create dynamic attributes filters for the pxGrid cloud identity source only. For more information, see [About the Cisco Identity Controller Dashboard](#).

The Cisco Secure Dynamic Attributes Connector Dashboard page displays the status of your connectors, adapters, and filters at a glance. Following is an example of the Dashboard of an unconfigured system:



Among the things you can do with the Dashboard are:

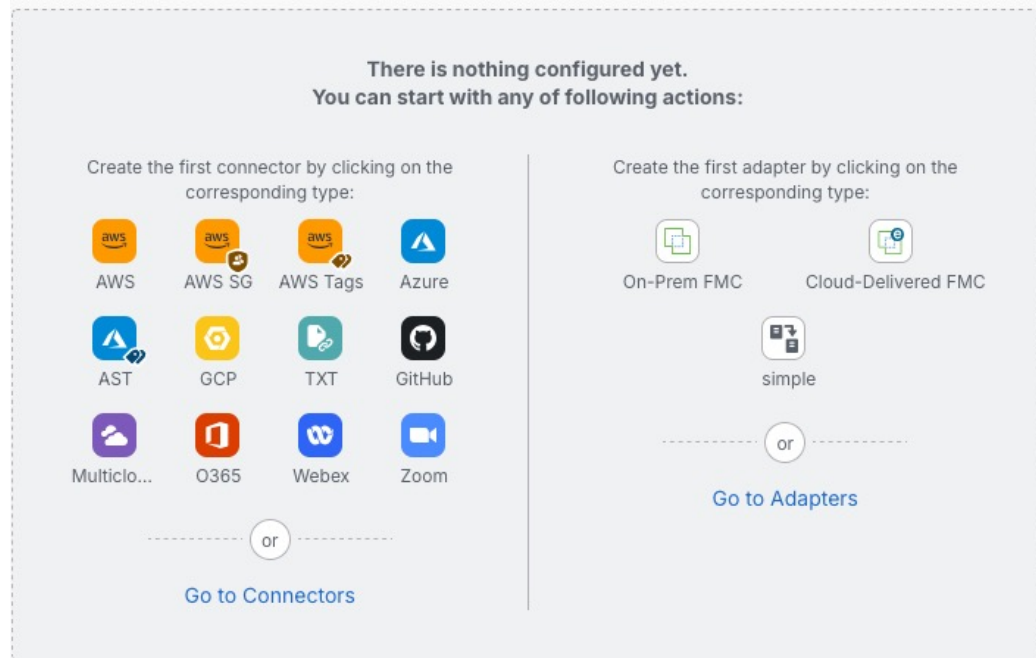
- Add, edit, and delete connectors and dynamic attributes filters.
- See how connectors and dynamic attributes filters are related to each other.
- View warnings and errors.

### Related Topics

- [Dashboard of an Unconfigured System, on page 5](#)
- [Dashboard of a Configured System, on page 5](#)
- [Add, Edit, or Delete Connectors, on page 7](#)
- [Add, Edit, or Delete Dynamic Attributes Filters, on page 8](#)

## Dashboard of an Unconfigured System

Sample Cisco Secure Dynamic Attributes Connector Dashboard page of an unconfigured system:



The Dashboard initially displays all the types of connectors you can configure for your system. You can do any of the following:



- Hover the mouse pointer over a connector and click [Add "Google Cloud" connector](#) to create a new one.
- Click **Go to Connectors** to add, edit, or delete connectors (good for creating, editing, or deleting multiple connectors at the same time).

For more information, see [Create a Connector, on page 10](#).

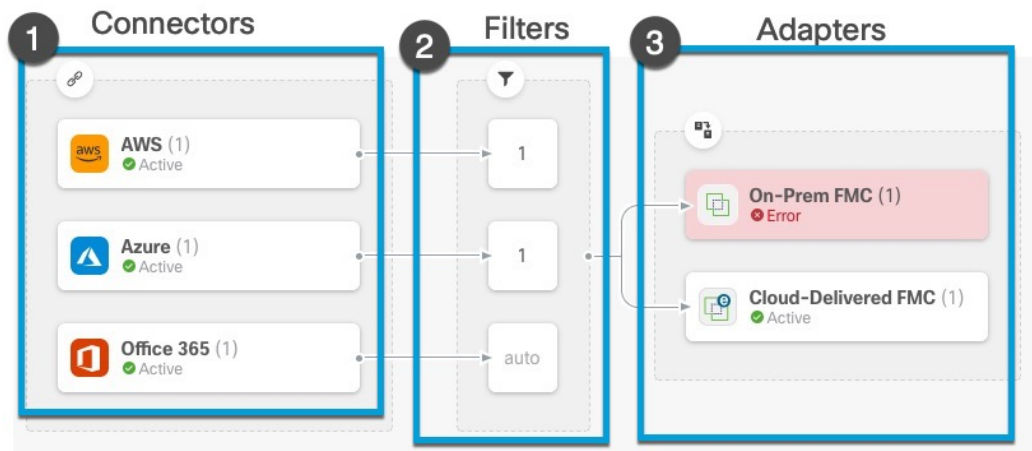
### Related Topics:

- [Dashboard of a Configured System, on page 5](#)
- [Add, Edit, or Delete Connectors, on page 7](#)
- [Add, Edit, or Delete Dynamic Attributes Filters, on page 8](#)

## Dashboard of a Configured System




Sample Cisco Secure Dynamic Attributes Connector Dashboard page of a configured system:

Click an area in the figure to learn more about it or click one of the links following the figure.





- 1 Create a Connector, on page 10
- 2 Create Dynamic Attributes Filters, on page 32
- 3 Create an Adapter, on page 29

The Dashboard shows the following (from left to right):

Connectors column	Filters column	Adapters column
<p>List of connectors with a number indicating how many of each type are configured. Connectors collect dynamic attributes that could be sent to the configured adapter. Dynamic attributes filters specify what data is sent.</p> <p>Click  to view more information about all configured connectors. You can also click the name of a connector to add, edit, or delete connectors; or to view detailed information about them. For more information, see <a href="#">Add, Edit, or Delete Connectors, on page 7</a>.</p>	<p>List of dynamic attributes filters associated with each connector with a number indicating how many of each filter are associated with a connector.</p> <p>Click  to view more information about all configured filters. You can also click the name of a filter to add, edit, or delete filters; or to view detailed information about them. For more information, see <a href="#">Add, Edit, or Delete Dynamic Attributes Filters, on page 8</a>.</p>	<p>List of adapters. Adapters receive dynamic objects from configured connectors using configured dynamic attributes filters; these dynamic objects can be used in access control policies without the need to deploy them.</p> <p>Click  to view more information about all configured adapters. You can also click the name of an adapter to add, edit, or delete adapters; or to view detailed information about them. For more information, see <a href="#">Create an Adapter, on page 29</a>.</p>



**Note** Some connectors, such as Outlook 365 and Azure Service tags, automatically pull available dynamic objects without the need for a dynamic attributes filters. Those connectors display **Auto** in the  column.


The Dashboard indicates whether or not an object is available. The Dashboard page is refreshed every 15 seconds but you can click **Refresh** () at the top of the page at any time to refresh immediately. If issues persist, check your network connection.

**Related Topics:**


- [Add, Edit, or Delete Connectors, on page 7](#)
- [Add, Edit, or Delete Dynamic Attributes Filters, on page 8](#)
- [Create an Adapter, on page 29](#)

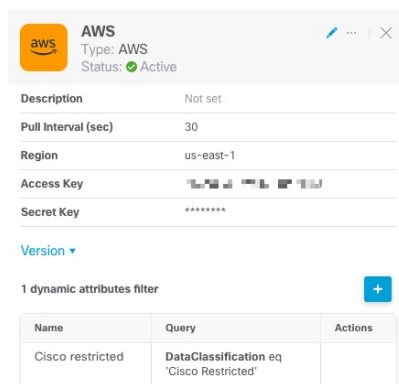
## Add, Edit, or Delete Connectors

The Dashboard enables you to view or edit connectors. You can click the name of a connector to view all

instances of that connector or you can click  for the following additional options:




- **Go to Connectors** to view all connectors at the same time; you can add, edit, and delete connectors from there.
- **Add Connector** > *type* to add a connector of the indicated type.

Click any connector in the connectors column (  ) to display more information about it; an example follows:





Name	Query	Actions
Cisco restricted	DataClassification eq 'Cisco Restricted'	


You have the following options:

- Click the Edit icon (  ) to edit this connector.
- Click the More icon (  ) for additional options.
- Click  to close the panel.
- Click **Version** to display the version of the . You can optionally copy the version to the clipboard if necessary for [Cisco TAC](#).

The table at the bottom of the panel enables you to add dynamic attributes filters; or to edit or dynamic attributes connector delete connectors. A sample follows:

1 dynamic attributes filter


Name	Query	Actions
Cisco restricted	DataClassification eq 'Cisco Restricted'	 

Click the Add icon () to add a dynamic attributes filter for this connector. For more information, see [Create Dynamic Attributes Filters, on page 32](#).

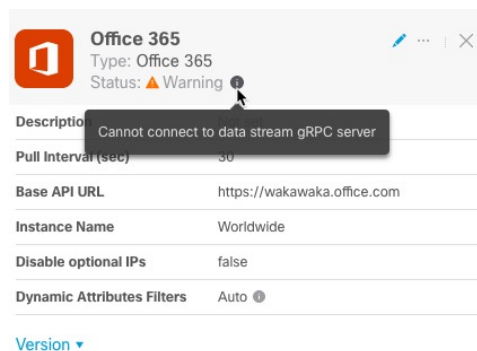
Hover the mouse pointer over the Actions column to either edit or delete the indicated connector.

### View error information

To view error information for a connector:

1. On the Dashboard, click the name of the connector that is displaying the error.
2. In the right pane, click **Information** ()


An example follows.



3. To resolve this issue, edit the connector settings as discussed in [Create an Office 365 Connector, on page 27](#).
4. If you cannot resolve the issue, click **Version** and copy the version to a text file.
5. Get your Security Cloud Control tenant ID as discussed in [Get Your Tenant ID, on page 37](#)
6. Provide all of this information to [Cisco TAC](#).

## Add, Edit, or Delete Dynamic Attributes Filters

The Dashboard enables you to add, edit, or delete dynamic attributes filters. You can click the name of a filter

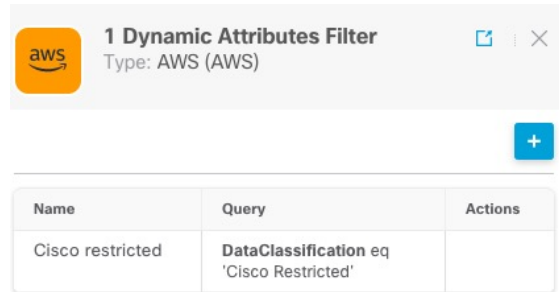
to view all instances of that filter or you can click  for the following additional options:

- **Go to Dynamic Attributes Filters** to view all configured dynamic attributes filters. You can add, edit, or delete dynamic attributes filters from there.
- **Add Dynamic Attributes Filters** to add a filter.




For more information about adding dynamic attributes filters, see [Create Dynamic Attributes Filters, on page 32](#).

An example follows:







Name	Query	Actions
Cisco restricted	DataClassification eq 'Cisco Restricted'	

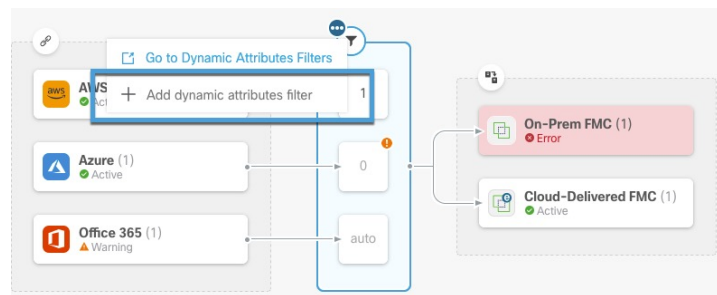




**Note** Some connectors, such as Outlook 365 and Azure Service tags, automatically pull available dynamic objects without the need for a dynamic attributes filters. Those connectors display **Auto** in the  column.

You have the following options:

- Click a filter instance to view summary information about dynamic attributes filters associated with a connector.
- Click the Add icon (  ) to add a new dynamic attributes filter.  
For more information, see [Create Dynamic Attributes Filters, on page 32](#).
- Click  in the filters column (  ) indicates the indicated connector has no associated dynamic attributes filters. Without associated filters, the connector can send nothing to Firewall Management Center.

One way to resolve the issue is to click  in the filters column and click **Add Dynamic Attributes Filter**. A sample follows.



- Click  to add, edit, or delete filters.
- Click  to close the panel.

# Create a Connector

A *connector* is an interface with a cloud service. The connector retrieves network information from the cloud service so the network information can be used in policies on the Security Cloud Control.

We support the following:

**Table 2: List of supported connectors by Cisco Secure Dynamic Attributes Connector version and platform**

CSDAC version/platform	AWS	AWS security groups	AWS service tags	Azure	Azure Service Tags	Cisco Cyber Vision	Cisco Multicloud Defense	Generic text	GitHub	Google Cloud	Microsoft Office 365	vCenter	Webex	Zoom
Version 1.1 (on-premises)	Yes	No	No	Yes	Yes	No	No	No	No	No	Yes	Yes	No	No
Version 2.0 (on-premises)	Yes	No	No	Yes	Yes	No	No	No	No	Yes	Yes	Yes	No	No
Version 2.2 (on-premises)	Yes	No	No	Yes	Yes	No	No	No	Yes	Yes	Yes	Yes	No	No
Version 2.3 (on-premises)	Yes	No	No	Yes	Yes	No	No	No	Yes	Yes	Yes	Yes	Yes	Yes
Version 3.0 (on-premises)	Yes	Yes	Yes	Yes	Yes	Yes	No	Yes	Yes	Yes	Yes	Yes	Yes	Yes
Cloud-delivered (Security Cloud Control)	Yes	Yes	Yes	Yes	Yes	Yes	Yes	Yes	Yes	Yes	Yes	No	Yes	Yes

## Amazon Web Services Connector—About User Permissions and Imported Data

The Cisco Secure Dynamic Attributes Connector imports dynamic attributes from AWS to Security Cloud Control for use in policies.

### Dynamic attributes imported

We import the following dynamic attributes from AWS:

- *Tags*, user-defined key-value pairs you can use to organize your AWS EC2 resources.

For more information, see [Tag your EC2 Resources](#) in the AWS documentation

- *IP addresses* of virtual machines in AWS.

### Minimum permissions required

The Cisco Secure Dynamic Attributes Connector requires a user at minimum with a policy that permits `ec2:DescribeTags`, `ec2:DescribeVpcs`, and `ec2:DescribeInstances` to be able to import dynamic attributes.

## Create an AWS User with Minimal Permissions for the Cisco Secure Dynamic Attributes Connector

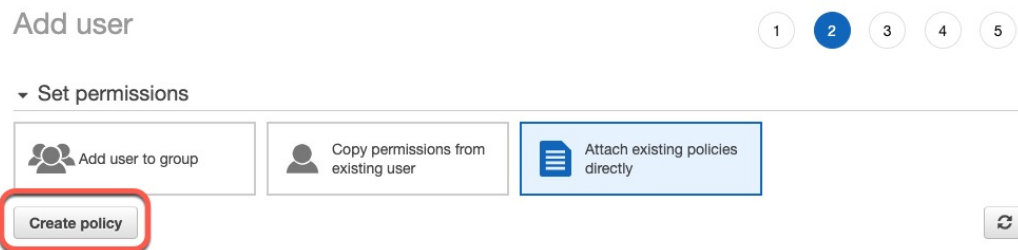
This task discusses how to set up a service account with minimum permissions to send dynamic attributes to Security Cloud Control. For a list of these attributes, see [Amazon Web Services Connector—About User Permissions and Imported Data, on page 10](#).

### Before you begin

You must already have set up your Amazon Web Services (AWS) account. For more information about doing that, see [this article](#) in the AWS documentation.

### Procedure

- Step 1** Log in to the AWS console as a user with the admin role.
  - Step 2** From the Dashboard, click **Security, Identity & Compliance > IAM**.
  - Step 3** Click **Access Management > Users**.
  - Step 4** Click **Add Users**.
  - Step 5** In the **User Name** field, enter a name to identify the user.
  - Step 6** Click **Access Key - Programmatic Access**.
  - Step 7** At the Set permissions page, click **Next** without granting the user access to anything. You can grant user access later.
  - Step 8** Add tags to the user if desired.
  - Step 9** Click **Create User**.
  - Step 10** Click **Download .csv** to download the user's key to your computer.
- Note**  
This is the only opportunity you have to retrieve the user's key.
- Step 11** Click **Close**.
  - Step 12** At the Identity and Access Management (IAM) page in the left column, click **Access Management > Policies**.
  - Step 13** Click **Create Policy**.
  - Step 14** On the Create Policy page, click **JSON**.



- Step 15** Enter the following policy in the field:

```
{
  "Version": "2012-10-17",
  "Statement": [
    {
      "Effect": "Allow",
```

```

    "Action": [
      "ec2:DescribeTags",
      "ec2:DescribeInstances",
      "ec2:DescribeVpcs"
    ],
    "Resource": "*"
  }
}

```

- Step 16** Click **Next**.
- Step 17** Click **Review**.
- Step 18** On the Review Policy page, enter the requested information and click **Create Policy**.
- Step 19** On the Policies page, enter all or part of the policy name in the search field and press Enter.
- Step 20** Click the policy you just created.
- Step 21** Click **Actions > Attach**.
- Step 22** If necessary, enter all or part of the user name in the search field and press Enter.
- Step 23** Click **Attach Policy**.

---

### What to do next

[Create an AWS Connector, on page 12.](#)

## Create an AWS Connector




This task discusses how to configure a connector that sends data from AWS to the Security Cloud Control for use in policies.

### Before you begin

Create a user with at least the privileges discussed in [Create an AWS User with Minimal Permissions for the Cisco Secure Dynamic Attributes Connector, on page 11.](#)

### Procedure

---

- Step 1** Log in to Security Cloud Control.
- Step 2** Click **Firewall**.
- Step 3** Click **Administration > Dynamic Attributes Connector > Connectors**.
- Step 4** Do any of the following:
- Add a new connector: click Add icon (  ), then click the name of the connector.
  - Edit a connector: click Edit icon (  Edit ).
  - Delete a connector: click Delete icon (  Delete ).
- Step 5** Enter the following information.

Value	Description
Name	(Required.) Enter a name to uniquely identify this connector.
Description	Optional description.
Pull Interval	(Default 30 seconds.) Interval at which IP mappings are retrieved from AWS.
Region	(Required.) Enter your AWS region code.
Access Key	(Required.) Enter your access key.
Secret Key	(Required.) Enter your secret key.

**Step 6** Click **Test** and make sure the test succeeds before you save the connector.

**Step 7** Click **Save**.

**Step 8** Make sure **Ok** is displayed in the Status column.

## Amazon Web Services Security Groups Connector—About User Permissions and Imported Data

The Cisco Secure Dynamic Attributes Connector imports dynamic attributes from AWS to Security Cloud Control for use in policies.

### Minimum permissions required

The Cisco Secure Dynamic Attributes Connector requires a user at minimum with a policy that permits `ec2:DescribeTags`, `ec2:DescribeVpcs`, and `ec2:DescribeInstances` to be able to import dynamic attributes.

## Create an AWS Security Groups Connector

This task discusses how to configure a connector that sends [AWS security groups](#) data to the Security Cloud Control for use in policies.

### Before you begin

Do all of the following:

- Create AWS security groups as discussed in [Work with security groups](#) on the AWS documentation site.
- Create a user with at least the privileges discussed in [Create an AWS User with Minimal Permissions for the Cisco Secure Dynamic Attributes Connector](#), on page 11.

### Procedure

**Step 1** Log in to Security Cloud Control.

**Step 2** Click **Firewall**.

**Step 3** Click **Administration > Dynamic Attributes Connector > Connectors**.

**Step 4** Do any of the following:

- Add a new connector: click Add icon (  ), then click the name of the connector.
- Edit a connector: click Edit icon (  Edit ).
- Delete a connector: click Delete icon (  Delete ).

**Step 5** Enter the following information.

Value	Description
<b>Name</b>	(Required.) Enter a name to uniquely identify this connector.
<b>Description</b>	Optional description.
<b>Pull Interval</b>	(Default 30 seconds.) Interval at which IP mappings are retrieved from AWS.  The minimum value for <b>Pull Interval</b> is 1 second. You can set the maximum to any value you want. We recommend against setting the minimum to a low value because it can generate a lot of traffic, and, when applicable, can result in your being billed for the traffic.
<b>Region</b>	(Required.) Enter your AWS region code.
<b>AWS Access Key</b>	(Required.) Enter your access key.
<b>AWS Secret Key</b>	(Required.) Enter your secret key.

**Step 6** Click **Test** and make sure the test succeeds before you save the connector.

**Step 7** Click **Save**.

**Step 8** Make sure **Ok** is displayed in the Status column.

## Create an AWS Service Tags Connector

This topic discusses how to create a connector for Amazon Web Services (AWS) service tags to the Security Cloud Control for use in policies.

For more information, see resources like the following on the AWS documentation site:

- [What are tags?](#)
- [AWS IP address ranges](#)
- [Tagging your AWS resources](#)
- [Guidance for Tagging on AWS](#)
- [AWS service points](#)

## Procedure

**Step 1** Log in to Security Cloud Control.

**Step 2** Click **Firewall**.

**Step 3** Click **Administration** > **Dynamic Attributes Connector** > **Connectors**.

**Step 4** Do any of the following:

- Add a new connector: click Add icon (  ), then click the name of the connector.
- Edit a connector: click Edit icon (  **Edit** ).
- Delete a connector: click Delete icon (  **Delete** ).

**Step 5** Enter the following information.

Value	Description
<b>Name</b>	(Required.) Enter a name to uniquely identify this connector.
<b>Description</b>	Optional description.
<b>URL</b>	(Required.) Do not change the URL unless advised to do so.

**Step 6** Click **Test** and make sure **Test connection succeeded** is displayed before you save the connector.

**Step 7** Click **Save**.

**Step 8** Make sure **Ok** is displayed in the Status column.

## Azure Connector—About User Permissions and Imported Data

The Cisco Secure Dynamic Attributes Connector imports dynamic attributes from Azure to Security Cloud Control for use in policies.

### Dynamic attributes imported

We import the following dynamic attributes from Azure:

- *Tags*, key-value pairs associated with resources, resource groups, and subscriptions.  
For more information, see [this page](#) in the Microsoft documentation.
- *IP addresses* of virtual machines in Azure.

### Minimum permissions required

The Cisco Secure Dynamic Attributes Connector requires a user at minimum with the **Reader** permission to be able to import dynamic attributes.

## Create an Azure User with Minimal Permissions for the Cisco Secure Dynamic Attributes Connector

This task discusses how to set up a service account with minimum permissions to send dynamic attributes to Security Cloud Control. For a list of these attributes, see [Azure Connector—About User Permissions and Imported Data, on page 15](#).

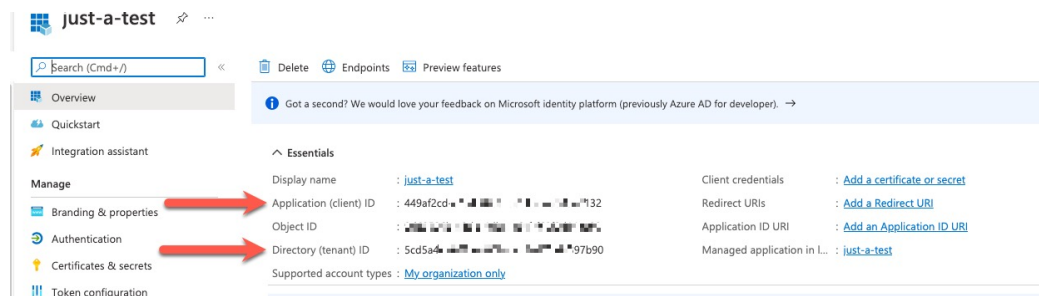
### Before you begin

You must already have a Microsoft Azure account. To set one up, see [this page](#) on the Azure documentation site.

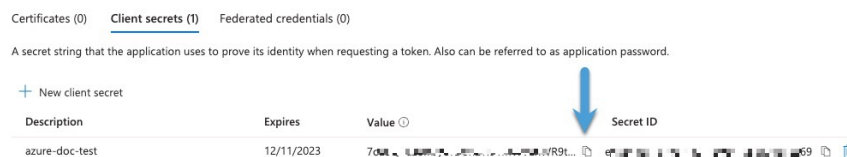
### Procedure

- Step 1** Log in to the [Azure Portal](#) as the owner of the subscription.
- Step 2** Click **Azure Active Directory**.
- Step 3** Find the instance of Azure Active Directory for the application you want to set up.
- Step 4** Click **Add > App registration**.
- Step 5** In the **Name** field, enter a name to identify this application.
- Step 6** Enter other information on this page as required by your organization.
- Step 7** Click **Register**.
- Step 8** On the next page, write down or copy the Client ID (also referred to as *application ID*) and the tenant ID (also referred to as the *directory ID*).

A sample follows.



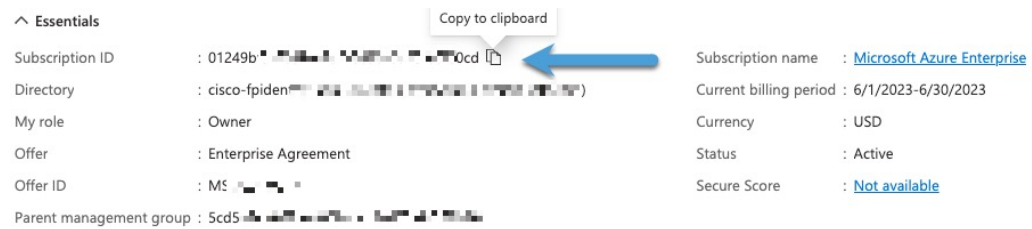
- Step 9** Next to Client Credentials, click **Add a certificate or secret**.
- Step 10** Click **New Client Secret**.
- Step 11** Enter the requested information and click **Add**.
- Step 12** Copy the value of the **Value** field to the clipboard. This value, *and not the Secret ID*, is the client secret.



- Step 13** Go back to the main Azure Portal page and click **Subscriptions**.
- Step 14** Click the name of your subscription.



**Step 15** Copy the subscription ID to the clipboard.



Essentials

Subscription ID	: 01249b-...0cd	Subscription name	: <a href="#">Microsoft Azure Enterprise</a>
Directory	: cisco-fpiden-...	Current billing period	: 6/1/2023-6/30/2023
My role	: Owner	Currency	: USD
Offer	: Enterprise Agreement	Status	: Active
Offer ID	: MS-...	Secure Score	: <a href="#">Not available</a>
Parent management group	: 5cd5-...		

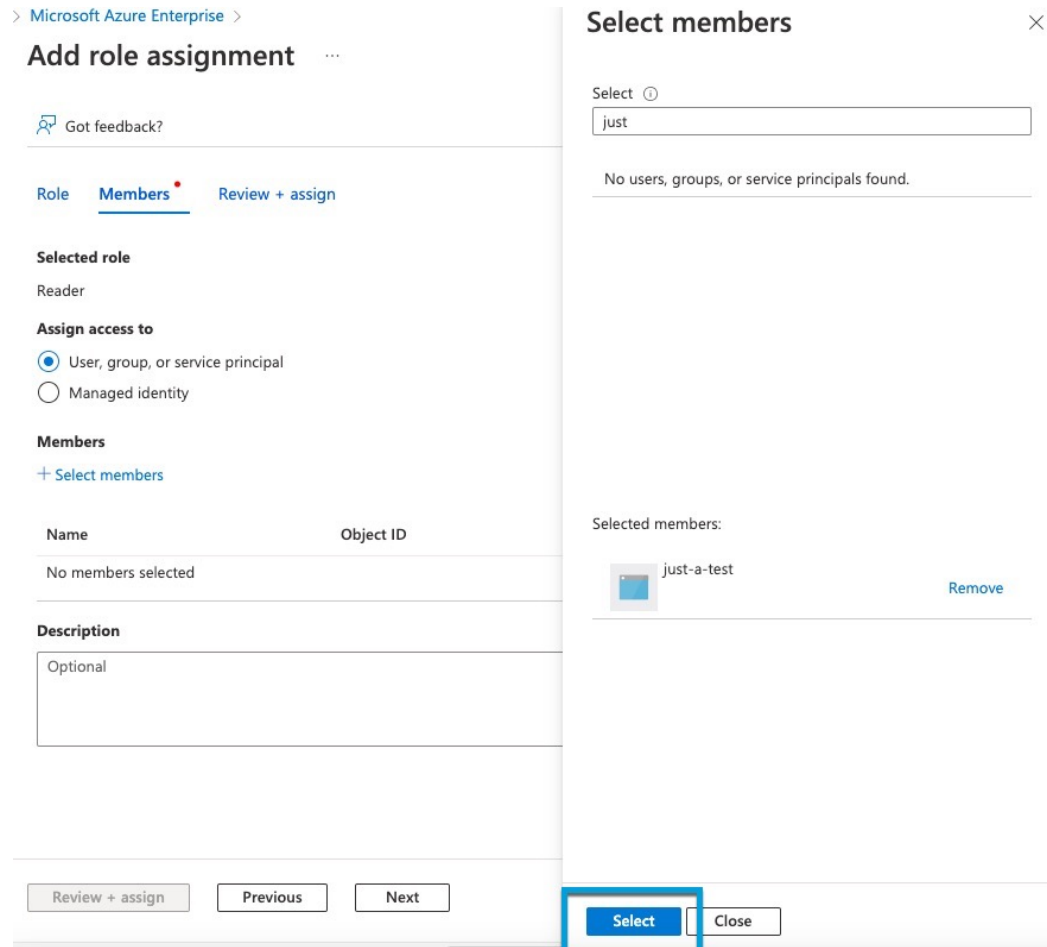
**Step 16** Click **Access Control (IAM)**.

**Step 17** Click **Add > Add role assignment**.

**Step 18** Click **Reader** and click **Next**.

**Step 19** Click **Select Members**.

**Step 20** On the right side of the page, click the name of the app you registered and click **Select**.



> [Microsoft Azure Enterprise](#) >

### Add role assignment

[Got feedback?](#)

Role **Members** [Review + assign](#)

**Selected role**  
Reader

**Assign access to**  
☒ User, group, or service principal  
☐ Managed identity

**Members**  
[+ Select members](#)

Name	Object ID
No members selected	

**Description**  
Optional


[Review + assign](#) [Previous](#) [Next](#) **Select** [Close](#)

### Select members

Select [?](#)  
just

No users, groups, or service principals found.

**Selected members:**

 just-a-test	<a href="#">Remove</a>
--	------------------------

**Step 21** Click **Review + Assign** and follow the prompts to complete the action.

**What to do next**

See [Create an Azure Connector, on page 18](#).

**Create an Azure Connector**

This task discusses how to create a connector to send data from Azure to Security Cloud Control for use in policies.

**Before you begin**

Create an Azure user with at least the privileges discussed in [Create an Azure User with Minimal Permissions for the Cisco Secure Dynamic Attributes Connector, on page 16](#).

**Procedure**

- 
- Step 1** Log in to Security Cloud Control.
- Step 2** Click **Firewall**.
- Step 3** Click **Administration > Dynamic Attributes Connector > Connectors**.
- Step 4** Do any of the following:

- Add a new connector: click Add icon (  ), then click the name of the connector.
- Edit a connector: click Edit icon (  ).
- Delete a connector: click Delete icon (  ).

- Step 5** Enter the following information.

Value	Description
<b>Name</b>	(Required.) Enter a name to uniquely identify this connector.
<b>Description</b>	Optional description.
<b>Pull Interval</b>	(Default 30 seconds.) Interval at which IP mappings are retrieved from Azure.  The minimum value for <b>Pull Interval</b> is 1 second. You can set the maximum to any value you want. We recommend against setting the minimum to a low value because it can generate a lot of traffic, and, when applicable, can result in your being billed for the traffic.
<b>Subscription Id</b>	(Required.) Enter your Azure subscription ID.
<b>Tenant Id</b>	(Required.) Enter your tenant ID.
<b>Client Id</b>	(Required.) Enter your client ID.
<b>Client Secret</b>	(Required.) Enter your client secret.

- Step 6** Click **Test** and make sure **Test connection succeeded** is displayed before you save the connector.




- Step 7** Click **Save**.
- Step 8** Make sure **Ok** is displayed in the Status column.

## Create an Azure Service Tags Connector

This topic discusses how to create a connector for Azure service tags to the Security Cloud Control for use in policies. The IP addresses associated with these tags are updated every week by Microsoft.

For more information, see [Virtual network service tags on Microsoft TechNet](#).

### Procedure

- Step 1** Log in to Security Cloud Control.
- Step 2** Click **Firewall**.
- Step 3** Click **Administration > Dynamic Attributes Connector > Connectors**.
- Step 4** Do any of the following:
- Add a new connector: click Add icon (  ), then click the name of the connector.
  - Edit a connector: click Edit icon (  ).
  - Delete a connector: click Delete icon (  ).
- Step 5** Enter the following information.

Value	Description
<b>Name</b>	(Required.) Enter a name to uniquely identify this connector.
<b>Description</b>	Optional description.
<b>Pull Interval</b>	(Default 30 seconds.) Interval at which IP mappings are retrieved from Azure. The minimum value for <b>Pull Interval</b> is 1 second. You can set the maximum to any value you want. We recommend against setting the minimum to a low value because it can generate a lot of traffic, and, when applicable, can result in your being billed for the traffic.
<b>Subscription Id</b>	(Required.) Enter your Azure subscription ID.
<b>Tenant Id</b>	(Required.) Enter your tenant ID.
<b>Client Id</b>	(Required.) Enter your client ID.
<b>Client Secret</b>	(Required.) Enter your client secret.

- Step 6** Click **Test** and make sure **Test connection succeeded** is displayed before you save the connector.
- Step 7** Click **Save**.

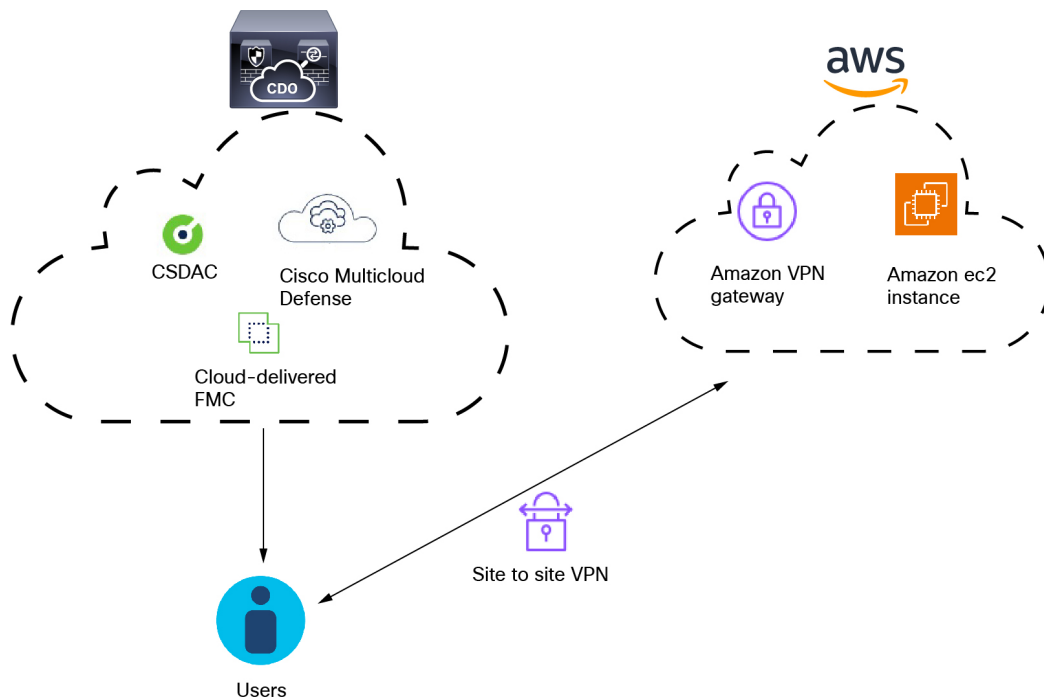
**Step 8** Make sure **Ok** is displayed in the Status column.

## Create a Multicloud Defense Connector

This topic discusses how to create a connector for Cisco Multicloud Defense. The connector sends dynamic application address objects to the configured Cloud-Delivered Firewall Management Center.

For more information, see the [Address Objects](#) chapter in the *Cisco Multicloud Defense User Guide* and [address object API documentation](#).

The following figure shows how the Cisco Multicloud Defense connector works.



As the figure shows:

- Users logging in and out of AWS create activity monitored by Multicloud Defense.
- The dynamic attributes connector and Multicloud Defense, both included in Security Cloud Control, send IP addresses from that activity to the Cloud-Delivered Firewall Management Center.
- These IP addresses can then be used in access control rules by the Cloud-Delivered Firewall Management Center.


### Procedure

**Step 1** Log in to Security Cloud Control.

**Step 2** Click **Firewall**.

**Step 3** Click **Administration** > **Dynamic Attributes Connector** > **Connectors**.

**Step 4** Do any of the following:

- Add a new connector: click Add icon (  ), then click the name of the connector.
- Edit a connector: click Edit icon (  Edit ).
- Delete a connector: click Delete icon (  Delete ).

**Step 5** Enter a **Name** and optional **Description** to identify the connector.

**Step 6** Enter a **Pull Interval**. (Default 30 seconds.) Interval at which objects are retrieved from the Multicloud Defense Connector.

**Step 7** Click **Test** and make sure the test succeeds before you save the connector.

**Step 8** Click **Save**.

**Step 9** Make sure **Ok** is displayed in the Status column.

---

### What to do next


You must create a Cloud-Delivered Firewall Management Center adapter as discussed in [Create an Adapter, on page 29](#).

## Create a Cisco Cyber Vision Connector

This task discusses how to send data from [Cisco Cyber Vision](#) to the Security Cloud Control.

### Before you begin

Cisco Cyber Vision must be reachable from the machine on which the dynamic attributes connector is running. You must know its IP address, port, and API key.

To find the API key in the Cyber Vision management console, click **Admin** > **API** > **Token**, then click **Show** to display the token and  to copy the token to the clipboard.

### Procedure

---

**Step 1** Log in to Security Cloud Control.

**Step 2** Click **Firewall**.

**Step 3** Click **Administration** > **Dynamic Attributes Connector** > **Connectors**.

**Step 4** Do any of the following:

- Add a new connector: click Add icon (  ), then click the name of the connector.
- Edit a connector: click Edit icon (  Edit ).
- Delete a connector: click Delete icon (  Delete ).

**Step 5** Enter the following information.

Value	Description
<b>Name</b>	(Required.) Enter a name to uniquely identify this connector.
<b>Description</b>	Optional description.
<b>Cyber Vision Prefix</b>	Enter an alphanumeric string to identify dynamic objects from this Cyber Vision's IP address when objects are sent to Security Cloud Control.  If you have one Cyber Vision IP address, you can enter any value such as <b>1</b> .
<b>Pull Interval</b>	(Default 60 seconds.) Interval at which data mappings are retrieved from Cyber Vision.  The minimum value for <b>Pull Interval</b> is 1 second. You can set the maximum to any value you want. We recommend against setting the minimum to a low value because it can generate a lot of traffic, and, when applicable, can result in your being billed for the traffic.
<b>IP</b>	(Required.) Enter the Cyber Vision IP address.
<b>Port</b>	(Required.) Enter the Cyber Vision listen port.
<b>Token</b>	(Required.) Enter the API token.

**Step 6** Click **Test** and make sure the test succeeds before you save the connector.

**Step 7** Click **Save**.

**Step 8** Make sure **Ok** is displayed in the Status column.

## Create a Generic Text Connector

This task discusses how to create an ad hoc list of IP addresses you maintain manually and retrieve at an interval you select (30 seconds by default). You can update the list of addresses anytime you want.

### Before you begin

Create text files with IP addresses and put it on a web server that is accessible from the Security Cloud Control. IP addresses can include CIDR notation. The text file must have only one IP address per line.




For example, you might have a list of IP addresses for an "allow list" in access control rules and another list of IP addresses for a "block list" in access control rules.

You can specify up to 10,000 IP addresses per text file.



**Note** Do not include a scheme (**http://** or **https://**) in your IP addresses.

## Procedure

- 
- Step 1** Log in to Security Cloud Control.
- Step 2** Click **Firewall**.
- Step 3** Click **Administration** > **Dynamic Attributes Connector** > **Connectors**.
- Step 4** Do any of the following:
- Add a new connector: click Add icon (  ), then click the name of the connector.
  - Edit a connector: click Edit icon (  Edit ).
  - Delete a connector: click Delete icon (  Delete ).
- Step 5** Enter a **Name** and an optional description.
- Step 6** (Optional.) In the **Pull Interval** field, change the frequency, in seconds, at which the dynamic attributes connector retrieves IP addresses from the text file. The default is 30 seconds.
- The minimum value for **Pull Interval** is 1 second. You can set the maximum to any value you want. We recommend against setting the minimum to a low value because it can generate a lot of traffic, and, when applicable, can result in your being billed for the traffic.
- Step 7** In the **URLs** field, enter each URL from which to retrieve IP addresses, one URL per line.
- Step 8** (Optional.) Click **Add another URL** to add an additional URL to monitor.
- Step 9** (Optional.) In the **Certificate** field, paste your server's certificate chain
- Step 10** Click **Test** and make sure the test succeeds before you save the connector.
- Step 11** Click **Save**.
- Step 12** Make sure **Ok** is displayed in the Status column.
- 

## Create a GitHub Connector

This section discusses how to create a GitHub connector that sends data to the Security Cloud Control for use in policies. The IP addresses associated with these tags are maintained by GitHub. You do not have to create a dynamic attributes filters.

For more information, see [About GitHub's IP addresses](#).




---

**Note** Do not change the URL because doing so will fail to retrieve any IP addresses.

---

## Procedure

- 
- Step 1** Log in to Security Cloud Control.

**Step 2** Click **Firewall**.

**Step 3** Click **Administration > Dynamic Attributes Connector > Connectors**.

**Step 4** Do any of the following:

- Add a new connector: click Add icon (  ), then click the name of the connector.
- Edit a connector: click Edit icon (  Edit ).
- Delete a connector: click Delete icon (  Delete ).

**Step 5** Enter a **Name** and an optional description.

**Step 6** (Optional.) In the **Pull Interval** field, change the frequency, in seconds, at which the dynamic attributes connector retrieves IP addresses from GitHub. The default is 21,600 seconds (6 hours).

**Step 7** Click **Test** and make sure the test succeeds before you save the connector.

**Step 8** Click **Save**.

**Step 9** Make sure **Ok** is displayed in the Status column.

## Google Cloud Connector—About User Permissions and Imported Data

The Cisco Secure Dynamic Attributes Connector imports dynamic attributes from Google Cloud to Security Cloud Control for use in policies.

### Dynamic attributes imported

We import the following dynamic attributes from Google Cloud:

- *Labels*, key-value pairs you can use to organize your Google Cloud resources.  
For more information, see [Creating and Managing Labels](#) in the Google Cloud documentation.
- *Network tags*, key-value pairs associated with an organization, folder, or project.  
For more information, see [Creating and Managing Tags](#) in the Google Cloud documentation.
- *IP addresses* of virtual machines in Google Cloud.

### Minimum permissions required

The Cisco Secure Dynamic Attributes Connector requires a user at minimum with the **Basic > Viewer** permission to be able to import dynamic attributes.

## Create a Google Cloud User with Minimal Permissions for the Cisco Secure Dynamic Attributes Connector

This task discusses how to set up a service account with minimum permissions to send dynamic attributes to Security Cloud Control. For a list of these attributes, see [Google Cloud Connector—About User Permissions and Imported Data, on page 24](#).

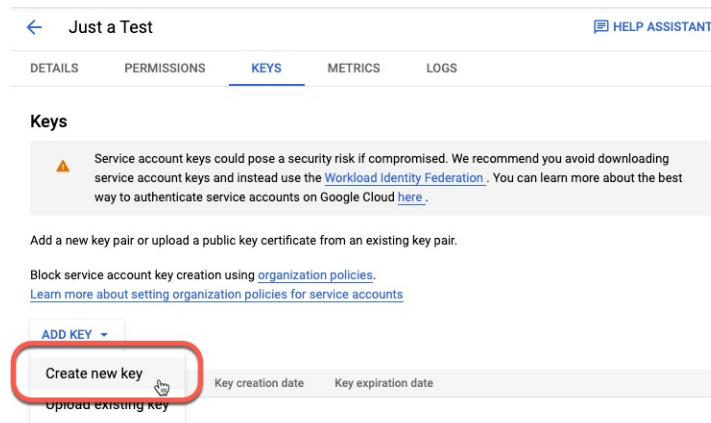


## Before you begin

You must already have set up your Google Cloud account. For more information about doing that, see [Setting Up Your Environment](#) in the Google Cloud documentation.

## Procedure

- Step 1** Log in to your Google Cloud account as a user with the owner role.
- Step 2** Click **IAM & Admin > Service Accounts > Create Service Account**.
- Step 3** Enter the following information:
- **Service account name:** A name to identify this account; for example, **CSDAC**.
  - **Service account ID:** Should be populated with a unique value after you enter the service account name.
  - **Service account description:** Enter an optional description.
- For more information about service accounts, see [Understanding Service Accounts](#) in the Google Cloud documentation.
- Step 4** Click **Create and Continue**.
- Step 5** Follow the prompts on your screen until the Grant users access to this service account section is displayed.
- Step 6** Grant the user the **Basic > Viewer** role.
- Step 7** Click **Done**.
- A list of service accounts is displayed.
- Step 8** Click **More** (⋮) at the end of the row of the service account you created.
- Step 9** Click **Manage Keys**.
- Step 10** Click **Add Key > Create New Key**.



- Step 11** Click **JSON**.
- Step 12** Click **Create**.
- The JSON key is downloaded to your computer.

**Step 13** Keep the key handy when you configure the GCP connector.

#### What to do next

See [Create a Google Cloud Connector](#), on page 26.

## Create a Google Cloud Connector

#### Before you begin

Have your Google Cloud JSON-formatted service account data ready; it's required to set up the connector.

#### Procedure

**Step 1** Log in to Security Cloud Control.

**Step 2** Click **Firewall**.

**Step 3** Click **Administration > Dynamic Attributes Connector > Connectors**.

**Step 4** Do any of the following:

- Add a new connector: click Add icon (  ), then click the name of the connector.
- Edit a connector: click Edit icon (  ).
- Delete a connector: click Delete icon (  ).

**Step 5** Enter the following information.

Value	Description
<b>Name</b>	(Required.) Enter a name to uniquely identify this connector.
<b>Description</b>	Optional description.
<b>Pull Interval</b>	(Default 30 seconds.) Interval at which IP mappings are retrieved from AWS.  The minimum value for <b>Pull Interval</b> is 1 second. You can set the maximum to any value you want. We recommend against setting the minimum to a low value because it can generate a lot of traffic, and, when applicable, can result in your being billed for the traffic.
<b>GCP region</b>	(Required.) Enter the GCP region in which your Google Cloud is located. For more information, see <a href="#">Regions and Zones</a> in the Google Cloud documentation.
<b>Service account</b>	Paste the JSON code for your Google Cloud service account.

**Step 6** Click **Test** and make sure the test succeeds before you save the connector.

**Step 7** Click **Save**.

**Step 8** Make sure **Ok** is displayed in the Status column.

## Create an Office 365 Connector

This task discusses how to create a connector for Office 365 tags to send data to the Security Cloud Control for use in policies. The IP addresses associated with these tags are updated every week by Microsoft. You do not have to create a dynamic attributes filter to use the data.

For more information, see [Office 365 URLs and IP address ranges](https://docs.microsoft.com/en-us/office365-security/office365-urls-and-ip-address-ranges) on docs.microsoft.com.

### Procedure

**Step 1** Log in to Security Cloud Control.

**Step 2** Click **Firewall**.

**Step 3** Click **Administration** > **Dynamic Attributes Connector** > **Connectors**.

**Step 4** Do any of the following:

- Add a new connector: click Add icon (  ), then click the name of the connector.
- Edit a connector: click Edit icon (  Edit ).
- Delete a connector: click Delete icon (  Delete ).

**Step 5** Enter the following information.

Value	Description
<b>Name</b>	(Required.) Enter a name to uniquely identify this connector.
<b>Description</b>	Optional description.
<b>Pull Interval</b>	(Default 30 seconds.) Interval at which IP mappings are retrieved from Azure.  The minimum value for <b>Pull Interval</b> is 1 second. You can set the maximum to any value you want. We recommend against setting the minimum to a low value because it can generate a lot of traffic, and, when applicable, can result in your being billed for the traffic.
<b>Base API URL</b>	(Required.) Enter the URL from which to retrieve Office 365 information, if it's different from the default. For more information, see <a href="#">Office 365 IP Address and URL web service</a> on the Microsoft documentation site.
<b>Instance name</b>	(Required.) From the list, click an instance name. For more information, see <a href="#">Office 365 IP Address and URL web service</a> on the Microsoft documentation site.
<b>Disable optional IPs</b>	(Required.) Enter <b>true</b> or <b>false</b> .

**Step 6** Click **Test** and make sure the test succeeds before you save the connector.




- Step 7** Click **Save**.
- Step 8** Make sure **Ok** is displayed in the Status column.

## Create a Webex Connector

This section discusses how to create a Webex connector that sends data to the Security Cloud Control for use in policies. The IP addresses associated with these tags are maintained by Webex. You do not have to create a dynamic attributes filters.

For more information, see [Port Reference for Webex Calling](#).

### Procedure

- Step 1** Log in to Security Cloud Control.
- Step 2** Click **Firewall**.
- Step 3** Click **Administration > Dynamic Attributes Connector > Connectors**.
- Step 4** Do any of the following:
- Add a new connector: click Add icon (  ), then click the name of the connector.
  - Edit a connector: click Edit icon (  Edit ).
  - Delete a connector: click Delete icon (  Delete ).
- Step 5** Enter the following information.

Value	Description
<b>Name</b>	(Required.) Enter a name to uniquely identify this connector.
<b>Description</b>	Optional description.
<b>Pull Interval</b>	(Default 30 seconds.) Interval at which IP mappings are retrieved from Webex.  The minimum value for <b>Pull Interval</b> is 1 second. You can set the maximum to any value you want. We recommend against setting the minimum to a low value because it can generate a lot of traffic, and, when applicable, can result in your being billed for the traffic.
<b>Provider Reserved IPs</b>	(Required.) (Required.) Slide to enabled to retrieve any reserved IP addresses.

- Step 6** Click **Test** and make sure the test succeeds before you save the connector.
- Step 7** Click **Save**.
- Step 8** Make sure **Ok** is displayed in the Status column.

## Create a Zoom Connector

This section discusses how to create a Zoom connector that sends data to the Security Cloud Control for use in policies. The IP addresses associated with these tags are maintained by Zoom. You do not have to create a dynamic attributes filters.

For more information, see [Zoom network firewall or proxy server settings](#).

### Procedure

- 
- Step 1** Log in to Security Cloud Control.
- Step 2** Click **Firewall**.
- Step 3** Click **Administration** > **Dynamic Attributes Connector** > **Connectors**.
- Step 4** Do any of the following:

- Add a new connector: click Add icon (  ), then click the name of the connector.
- Edit a connector: click Edit icon (  Edit ).
- Delete a connector: click Delete icon (  Delete ).

- Step 5** Enter the following information.

Value	Description
Name	(Required.) Enter a name to uniquely identify this connector.
Description	Optional description.
Pull Interval	(Default 30 seconds.) Interval at which IP mappings are retrieved from Zoom.  The minimum value for <b>Pull Interval</b> is 1 second. You can set the maximum to any value you want. We recommend against setting the minimum to a low value because it can generate a lot of traffic, and, when applicable, can result in your being billed for the traffic.
Provider Reserved IPs	(Required.) Slide to enabled to retrieve any reserved IP addresses.

- Step 6** Click **Test** and make sure the test succeeds before you save the connector.
- Step 7** Click **Save**.
- Step 8** Make sure **Ok** is displayed in the Status column.
- 

## Create an Adapter

An *adapter* is a secure connection to Cloud-Delivered Firewall Management Center to which you push network information from cloud objects for use in access control policies.

You can create the following adapters:

- *On-Prem Firewall Management Center* for an on-premises Secure Firewall Management Center
- *Cloud-Delivered Firewall Management Center* for devices managed by Security Cloud Control



**Note** You must have a **Super Admin** user role to create the first Cloud-Delivered Firewall Management Center adapter. To view or modify existing adapters, you must have an Admin or Super Admin user role.



**Note** Deleting an adapter by itself does not delete dynamic objects created by the adapter. If you wish to delete those objects permanently, do so on the device associated with the adapter.

Before deleting the adapter, you can set its **Operative Status** to **Paused and Clear**. Doing this stops sending network object groups to ASA and clears any previously sent objects from ASA.

Editing an adapter does not push updated objects to the associated device. If you must change the adapter's settings, delete the adapter and add it again.

## How to Create an On-Prem Firewall Management Center Adapter

This topic discusses how to create an adapter to push dynamic objects from the dynamic attributes connector to Security Cloud Control.




### Before you begin

Onboard the firewall manager to Security Cloud Control as discussed in *Onboard a Management Center* in the *Managing Security and Network Devices with Firewall in Security Cloud Control* online help.

### Required User Role:

- Super Admin

### Procedure

- Step 1** Log in to Security Cloud Control as a user with the Super Admin role.
- Step 2** Click **Firewall**.
- Step 3** Click **Administration > Dynamic Attributes Connector > Adapters**.
- Step 4** To add an adapter, click Add icon (  ) > On-Prem Firewall Management Center.
- Step 5** To edit or delete an adapter, click Edit icon (  **Edit** ), or Delete icon (  **Delete** ).
- Step 6** Add or edit the following information.

Value	Description
<b>Name</b>	(Required.) Enter a unique name to identify this adapter.

Value	Description
Description	Optional description of the adapter.
Primary Device	From the list, click the IP address of a management center associated with your tenant.
Secondary Device	(Optional.) If you have a secondary On-Prem Firewall Management Center, click its name from the list.

**Step 7** Click **OK**.

## How to Create a Cloud-Delivered Firewall Management Center Adapter




This topic discusses how to create an adapter to push dynamic objects from the dynamic attributes connector to Security Cloud Control.

### Before you begin

#### Required User Role:

- Super Admin

### Procedure

- Step 1** Log in to Security Cloud Control as a user with the Super Admin role.
- Step 2** Click **Firewall**.
- Step 3** Click **Administration > Dynamic Attributes Connector > Adapters**.
- Step 4** To add an adapter, click Add icon (  ) > Cloud-Delivered Firewall Management Center.
- Step 5** To edit or delete an adapter, click Edit icon (  ), or Delete icon (  ).
- Step 6** Edit the following information.

Value	Description
Name	(Required.) Enter a unique name to identify this adapter.
Description	Optional description of the adapter.
Cloud FMC URL	From the list, click the URL for your Cloud-Delivered Firewall Management Center.

**Step 7** Click **Test** and make sure the test succeeds before you save the adapter.

**Step 8** Click **Save**.

# Create Dynamic Attributes Filters

Dynamic attributes filters that you define using the Cisco Secure Dynamic Attributes Connector are exposed in the Security Cloud Control as dynamic objects that can be used in access control policies. For example, restrict access to an AWS server for the Finance Department to only members of the Finance group defined in Microsoft Active Directory.



**Note** You cannot create dynamic attributes filters for AWS, Azure, Azure Service Tags, Cisco Multicloud Defense, Generic Text, GitHub, Google Cloud, and Outlook 365, pxGrid cloud identity source, vCenter, Webex, and Zoom). These types of cloud objects provide their own IP addresses.

For more information about access control rules, see [Create Access Control Rules Using Dynamic Attributes Filters, on page 35](#).



## Before you begin

[Create a Connector, on page 10](#)


## Procedure

**Step 1** Click **Administration > Dynamic Attributes Connector**.

**Step 2** Click **Dynamic Attributes Filters**.

- Add a new filter: click **Add** (.
- Edit or delete a filter: Click **More** () , then click **Edit** or **Delete** at the end of the row.

**Step 3** Enter the following information.

Item	Description
Name	Unique name to identify the dynamic filter (as a dynamic object) in a policy and in the Security Cloud Control Object Manager ( <b>External Attributes &gt; Dynamic Object</b> ).
Connector	From the list, click the name of a connector to use.
Query	Click Add  .

**Step 4** To add or edit a query, enter the following information.

Item	Description
Key	Click a key from the list. Keys are fetched from the connector.



Item	Description
Operation	Click one of the following: <ul style="list-style-type: none"> <li>• <b>Equals</b> to exactly match the key to the value.</li> <li>• <b>Contains</b> to match the key to the value if any part of the value matches.</li> </ul>
Values	Click either <b>Any</b> or <b>All</b> and click one or more values from the list. Click <b>Add another value</b> to add values to your query.

**Step 5** Click **Show Preview** to display a list of networks or IP addresses returned by your query.

**Step 6** When you're finished, click **Save**.

**Step 7** (Optional.) Verify the dynamic object in the Security Cloud Control.

- Log in to the Security Cloud Control.
- Click **Manage > Policies > Firewall Threat Defense**.
- Click **Objects > Object Management**.
- In the left pane, click **External Attributes > Dynamic Object**.

The dynamic attribute query you created should be displayed as a dynamic object.

## Dynamic Attribute Filter Examples

This topic provides some examples of setting up dynamic attribute filters.

### Example: Azure

The following example shows one criterion: a server tagged as a Finance app.

Add Dynamic Attribute Filter

Name\*  Connector\*

Query\* +

Type	Op.	Value
all	eq	Finance
any	eq	App

> Show Preview Cancel Save

### Example: AWS

The following example shows one criterion: a FinanceApp with a value of 1.

Add Dynamic Attribute Filter

Name\*  Connector\*

Query\* +

Type	Op.	Value
<span>all</span> FinanceApp	eq	<span>any</span> 1

[Show Preview](#) Cancel Save

### Example: pxGrid Cloud

The following example shows one criterion: PostureStatus is NonCompliant.

Add Dynamic Attribute Filter

Name\*  Connector\*

Query\* +

Type	Op.	Value
<span>all</span> PostureStatus	eq	<span>any</span> NonCompliant

[Show Preview](#) Cancel Save

## Use Dynamic Objects in Access Control Policies

The dynamic attributes connector enables you to configure dynamic filters, seen in the Security Cloud Controls dynamic objects, in access control rules.

### About Dynamic Objects in Access Control Rules

A *dynamic object* is automatically pushed from the dynamic attributes connector to the Secure Firewall Manager after you create connectors and save a dynamic attributes filter on the connector.

You can use these dynamic objects on the access control rule's **Dynamic Attributes** tab page, similarly to the way you used Security Group Tags (SGTs). You can add dynamic objects as source or destination attributes; for example, in an access control block rule, you can add a Finance dynamic object as a destination attribute to block access to Finance servers by whatever objects match the other criteria in the rule.



**Note** You cannot create dynamic attributes filters for AWS, Azure, Azure Service Tags, Cisco Multicloud Defense, Generic Text, GitHub, Google Cloud, and Outlook 365, pxGrid cloud identity source, vCenter, Webex, and Zoom). These types of cloud objects provide their own IP addresses.

## Dynamic Attributes Rule Conditions

Dynamic attributes include the following:

- Dynamic objects (such as from the Cisco Secure Dynamic Attributes Connector)

The dynamic attributes connector enables you to collect data (such as networks and IP addresses) from cloud providers and send it to the Secure Firewall Management Center so it can be used in access control rules.

For more information about the dynamic attributes connector, see the [Cisco Secure Dynamic Attributes Connector Configuration Guide](#).

For more information about the dynamic attributes connector, see the information later in this guide.

- SGT objects
- Location IP objects
- Device type objects
- Endpoint profile objects

Dynamic attributes can be used as source criteria and destination criteria in access control rules. Use the following guidelines:

- Objects of different types are ANDd together
- Objects of a similar type are ORd together

For example, if you choose source destination criteria SGT 1, SGT 2, and device type 1; the rule is matched if device type 1 is detected on either SGT 1 or SGT 2.

## Create Access Control Rules Using Dynamic Attributes Filters

This topic discusses how to create access control rules using dynamic objects (these dynamic objects are named after the dynamic attributes filters you created previously).

### Before you begin

Create dynamic attributes filters as discussed in [Create Dynamic Attributes Filters, on page 32](#).

**Note**

You cannot create dynamic attributes filters for AWS, Azure, Azure Service Tags, Cisco Multicloud Defense, Generic Text, GitHub, Google Cloud, and Outlook 365, pxGrid cloud identity source, vCenter, Webex, and Zoom). These types of cloud objects provide their own IP addresses.

### Procedure

- 
- Step 1** Log in to Cisco Security Cloud Control as a user with the Super Admin role.
- Step 2** Click **Firewall**.

- Step 3** Click **Administration > Dynamic Attributes Connector > Connectors**.
- Step 4** Click **Manage > Policies > Firewall Threat Defense > Access Control heading > Access Control**.
- Step 5** Click **Edit** (✎) next to an access control policy.
- Step 6** Click **Add Rule**.
- Step 7** Click the **Dynamic Attributes** tab.
- Step 8** In the Available Attributes section, from the list, click **Dynamic Objects**.

The following figure shows an example.

The screenshot displays the 'Add Rule' configuration interface. At the top, there are input fields for 'Name', a checkbox for 'Enabled', a dropdown for 'Insert into Mandatory', a dropdown for 'Action' (set to 'Allow'), and a dropdown for 'Time Range' (set to 'None'). Below these fields is a horizontal tab bar with categories: Zones, Networks, VLAN Tags, Users, Applications, Ports, URLs, Dynamic Attributes, Inspection, Logging, and Comments. The 'Dynamic Attributes' tab is selected. Under this tab, there is a section titled 'Available Attributes' with a search bar and a list containing 'Dynamic Objects' and 'FinanceNetwork'. To the right of this list are two buttons: 'Add to Source' and 'Add to Destination'. Further right are two empty boxes labeled 'Selected Source Attributes (0)' and 'Selected Destination Attributes (0)'. At the bottom right of the form are 'Cancel' and 'Add' buttons.

The preceding example shows a dynamic object named `APIC Dynamic Attribute` that corresponds to the dynamic attribute filter created in the Cisco Secure Dynamic Attributes Connector.

- Step 9** Add the desired object to source or destination attributes.
- Step 10** Add other conditions to the rule if desired.

### What to do next

See [Dynamic Attributes Rule Conditions](#).

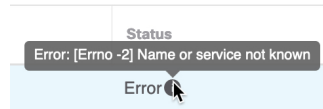
## Troubleshoot the Cisco Secure Dynamic Attributes Connector

How to troubleshoot issues with the dynamic attributes connector, including using provided tools.

## Troubleshoot Error Messages

### Problem: Name or service not known error

This error is displayed as a tooltip when you hover the mouse over an error condition on a connector. An example follows; yours might look different.

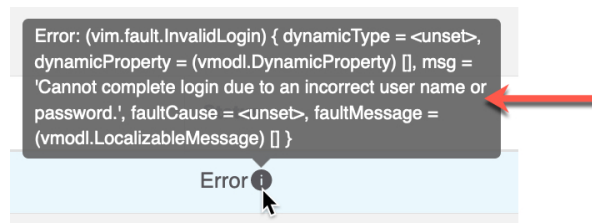


**Solution:** Edit the connector and check for:

- A trailing slash on a host name
- Verify the password is correct

### Problem: Incorrect username or password

This error is displayed as a tooltip when you hover the mouse over an error condition on a connector.



**Solution:** Edit the connector and change the user name or password.

## Get Your Tenant ID

If you require assistance with the Cisco Secure Dynamic Attributes Connector, you must provide your tenant ID to Cisco TAC so we can look at your logs.

### Procedure

- 
- Step 1** Log in to Security Cloud Control.
  - Step 2** Click **Settings** > **General Settings**.
  - Step 3** Copy your tenant ID to the clipboard to provide to Cisco TAC.
- A sample follows.

General Settings

User Management

Notification Settings

Logging Settings

### General Settings

Web Analytics ⓘ  
☒

Default Recurring Backup Schedule ⓘ  
Frequency: Weekly Time (UTC +00:00): 22 : 00  
Su Mo Tu We Th Fr Sa  
☒ ☐ ☐ ☐ ☐ ☐ ☐

Tenant ID  
a3e5ce4f-721d-4ae5-9c04-257b53a2858e