



Customizing Clientless SSL VPN

- [Clientless SSL VPN End User Setup, on page 1](#)
- [Customize Bookmark Help, on page 14](#)

Clientless SSL VPN End User Setup

This section is for the system administrator who sets up Clientless SSL VPN for end users. It describes how to customize the end-user interface and summarizes configuration requirements and tasks for a remote system. It specifies information to communicate to users to get them started using Clientless SSL VPN.

Define the End User Interface

The Clientless SSL VPN end user interface consists of a series of HTML panels. A user logs on to Clientless SSL VPN by entering the IP address of an ASA interface in the format `https://address`. The first panel that displays is the login screen.

View the Clientless SSL VPN Home Page

After the user logs in, the portal page opens.

The home page displays all of the Clientless SSL VPN features you have configured, and its appearance reflects the logo, text, and colors you have selected. This sample home page includes all available Clientless SSL VPN features with the exception of identifying specific file shares. It lets users browse the network, enter URLs, access specific websites, and use Application Access (port forwarding and smart tunnels) to access TCP applications.

View the Clientless SSL VPN Application Access Panel

To start port forwarding or smart tunnels, a user clicks the **Go** button in the Application Access box. The Application Access window opens and displays the TCP applications configured for this Clientless SSL VPN connection. To use an application with this panel open, the user starts the application in the normal way.

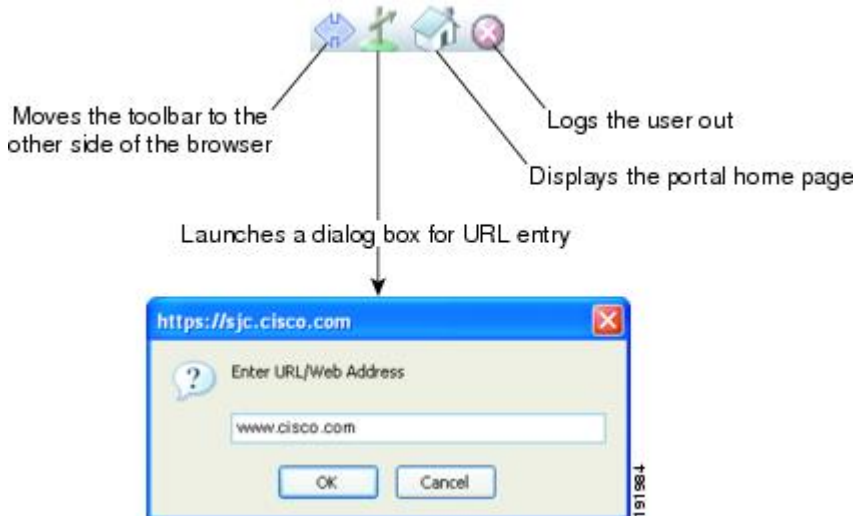


Note A stateful failover does not retain sessions established using Application Access. Users must reconnect following a failover.

View the Floating Toolbar

The floating toolbar shown in the following figure represents the current Clientless SSL VPN session.

Figure 1: Clientless SSL VPN Floating Toolbar



Be aware of the following characteristics of the floating toolbar:

- The toolbar lets you enter URLs, browse file locations, and choose preconfigured Web connections without interfering with the main browser window.
- If you configure your browser to block popups, the floating toolbar cannot display.
- If you close the toolbar, the ASA prompts you to end the Clientless SSL VPN session.

Customize Clientless SSL VPN Pages

You can change the appearance of the portal pages displayed to Clientless SSL VPN users. This includes the Login page displayed to users when they connect to the security appliance, the Home page displayed to users after the security appliance authenticates them, the Application Access window displayed when users launch an application, and the Logout page displayed when users log out of Clientless SSL VPN sessions.

After you customize the portal pages, you can save your customization and apply it to a specific connection profile, group policy, or user. The changes do not take effect until you reload the ASA, or you switch off and then enable clientless SSL.

You can create and save many customization objects, enabling the security appliance to change the appearance of portal pages for individual users or groups of users.

Information About Customization

The ASA uses customization objects to define the appearance of user screens. A customization object is compiled from an XML file which contains XML tags for all the customizable screen items displayed to remote users. The ASA software contains a customization template that you can export to a remote PC. You can edit this template and import the template back into the ASA as a new customization object.

When you export a customization object, an XML file containing XML tags is created at the URL you specify. The XML file created by the customization object named *Template* contains empty XML tags and provides the basis for creating new customization objects. This object cannot be changed or deleted from cache memory but can be exported, edited, and imported back into the ASA as a new customization object.

Customization Objects, Connection Profiles, and Group Policies

Initially, when a user first connects, the default customization object (named *DfltCustomization*) identified in the connection profile (tunnel group) determines how the logon screen appears. If the connection profile list is enabled, and the user selects a different group which has its own customization, the screen changes to reflect the customization object for that new group.

After the remote user is authenticated, the screen appearance is determined by whether a customization object has been assigned to the group policy.

Export a Customization Template

When you export a customization object, an XML file is created at the URL you specify. The customization template (named *Template*) contains empty XML tags and provides the basis for creating new customization objects. This object cannot be changed or deleted from cache memory but can be exported, edited, and imported back into the ASA as a new customization object.

Procedure

Step 1 Export a customization object and make changes to the XML tags:

```
export webvpn customization
```

Step 2 Import the file as a new object:

```
import webvpn customization
```

Example:

The following example exports the default customization object (*DfltCustomization*) and creates the XML file named *dflt_custom*.

```
hostname# export webvpn customization DfltCustomization tftp://209.165.200.225/dflt_custom
!!!!!!!!!!!!!!!!!!!!!!INFO: Customization object 'DfltCustomization' was exported to
tftp://10.86.240.197/dflt_custom
hostname#
```

Edit the Customization Template

This section shows the contents of the customization template and has convenient figures to help you quickly choose the correct XML tag and make changes that affect the screens.

You can use a text editor or an XML editor to edit the XML file. The following example shows the XML tags of the customization template. Some redundant tags have been removed for easier viewing:

```
<custom>
```

```

<localization>
  <languages>en, ja, zh, ru, ua</languages>
  <default-language>en</default-language>
</localization>
<auth-page>
  <window>
    <title-text l10n="yes"><![CDATA[SSL VPN Service</title-text>
  </window>
  <full-customization>
    <mode>disable</mode>
    <url></url>
  </full-customization>
  <language-selector>
    <mode>disable</mode>
    <title l10n="yes">Language:</title>
    <language>
      <code>en</code>
      <text>English</text>
    </language>
    <language>
      <code>zh</code>
      <text>(Chinese)</text>
    </language>
    <language>
      <code>ja</code>
      <text>(Japanese)</text>
    </language>
    <language>
      <code>ru</code>
      <text>(Russian)</text>
    </language>
    <language>
      <code>ua</code>
      <text>(Ukrainian)</text>
    </language>
  </language-selector>
  <logon-form>
    <title-text l10n="yes"><![CDATA[Login</title-text>
    <title-background-color><![CDATA[#666666</title-background-color>
    <title-font-color><![CDATA[#ffffff</title-font-color>
    <message-text l10n="yes"><![CDATA[Please enter your username and
password.</message-text>
    <username-prompt-text l10n="yes"><![CDATA[USERNAME:</username-prompt-text>
    <password-prompt-text l10n="yes"><![CDATA[PASSWORD:</password-prompt-text>
    <internal-password-prompt-text l10n="yes">Internal
Password:</internal-password-prompt-text>
    <internal-password-first>no</internal-password-first>
    <group-prompt-text l10n="yes"><![CDATA[GROUP:</group-prompt-text>
    <submit-button-text l10n="yes"><![CDATA[Login</submit-button-text>
    <title-font-color><![CDATA[#ffffff</title-font-color>
    <title-background-color><![CDATA[#666666</title-background-color>
    <font-color>#000000</font-color>
    <background-color>#ffffff</background-color>
    <border-color>#858A91</border-color>
  </logon-form>
  <logout-form>
    <title-text l10n="yes"><![CDATA[Logout</title-text>
    <message-text l10n="yes"><![CDATA[Goodbye.<br>

For your own security, please:<br>

<li>Clear the browser's cache

<li>Delete any downloaded files

```

```

<li>Close the browser's window</message-text>
  <login-button-text l10n="yes">Logon</login-button-text>
  <hide-login-button>no</hide-login-button>
  <title-background-color><![CDATA[#666666</title-background-color>
  <title-font-color><![CDATA[#ffffff</title-font-color>
  <title-font-color><![CDATA[#ffffff</title-font-color>
  <title-background-color><![CDATA[#666666</title-background-color>
  <font-color>#000000</font-color>
  <background-color>#ffffff</background-color>
  <border-color>#858A91</border-color>
</logout-form>
<title-panel>
  <mode>enable</mode>
  <text l10n="yes"><![CDATA[SSL VPN Service</text>
  <logo-url l10n="yes">/+CSCOU+/cisco_logo.gif</logo-url>
  <gradient>yes</gradient>
  <style></style>
  <background-color><![CDATA[#ffffff</background-color>
  <font-size><![CDATA[larger</font-size>
  <font-color><![CDATA[#800000</font-color>
  <font-weight><![CDATA[bold</font-weight>
</title-panel>
<info-panel>
  <mode>disable</mode>
  <image-url l10n="yes">/+CSCOU+/clear.gif</image-url>
  <image-position>above</image-position>
  <text l10n="yes"></text>
</info-panel>
<copyright-panel>
  <mode>disable</mode>
  <text l10n="yes"></text>
</copyright-panel>
</auth-page>
<portal>
  <title-panel>
    <mode>enable</mode>
    <text l10n="yes"><![CDATA[SSL VPN Service</text>
    <logo-url l10n="yes">/+CSCOU+/cisco_logo.gif</logo-url>
    <gradient>yes</gradient>
    <style></style>
    <background-color><![CDATA[#ffffff</background-color>
    <font-size><![CDATA[larger</font-size>
    <font-color><![CDATA[#800000</font-color>
    <font-weight><![CDATA[bold</font-weight>
  </title-panel>
  <browse-network-title l10n="yes">Browse Entire Network</browse-network-title>
  <access-network-title l10n="yes">Start AnyConnect</access-network-title>
  <application>
    <mode>enable</mode>
    <id>home</id>
    <tab-title l10n="yes">Home</tab-title>
    <order>1</order>
  </application>
  <application>
    <mode>enable</mode>
    <id>web-access</id>
    <tab-title l10n="yes"><![CDATA[Web Applications</tab-title>
    <url-list-title l10n="yes"><![CDATA[Web Bookmarks</url-list-title>
    <order>2</order>
  </application>
  <application>
    <mode>enable</mode>
    <id>file-access</id>

```

```

        <tab-title l10n="yes"><![CDATA[Browse Networks</tab-title>
        <url-list-title l10n="yes"><![CDATA[File Folder Bookmarks</url-list-title>
        <order>3</order>
    </application>
    <application>
        <mode>enable</mode>
        <id>app-access</id>
        <tab-title l10n="yes"><![CDATA[Application Access</tab-title>
        <order>4</order>
    </application>
    <application>
        <mode>enable</mode>
        <id>net-access</id>
        <tab-title l10n="yes">AnyConnect</tab-title>
        <order>4</order>
    </application>
    <application>
        <mode>enable</mode>
        <id>help</id>
        <tab-title l10n="yes">Help</tab-title>
        <order>1000000</order>
    </application>
    <toolbar>
        <mode>enable</mode>
        <logout-prompt-text l10n="yes">Logout</logout-prompt-text>
        <prompt-box-title l10n="yes">Address</prompt-box-title>
        <browse-button-text l10n="yes">Browse</browse-button-text>
        <username-prompt-text l10n="yes"></username-prompt-text>
    </toolbar>
    <column>
        <width>100%</width>
        <order>1</order>
    </column>
    <pane>
        <type>TEXT</type>
        <mode>disable</mode>
        <title></title>
        <text></text>
        <notitle></notitle>
        <column></column>
        <row></row>
        <height></height>
    </pane>
    <pane>
        <type>IMAGE</type>
        <mode>disable</mode>
        <title></title>
        <url l10n="yes"></url>
        <notitle></notitle>
        <column></column>
        <row></row>
        <height></height>
    </pane>
    <pane>
        <type>HTML</type>
        <mode>disable</mode>
        <title></title>
        <url l10n="yes"></url>
        <notitle></notitle>
        <column></column>
        <row></row>
        <height></height>
    </pane>
    <pane>

```

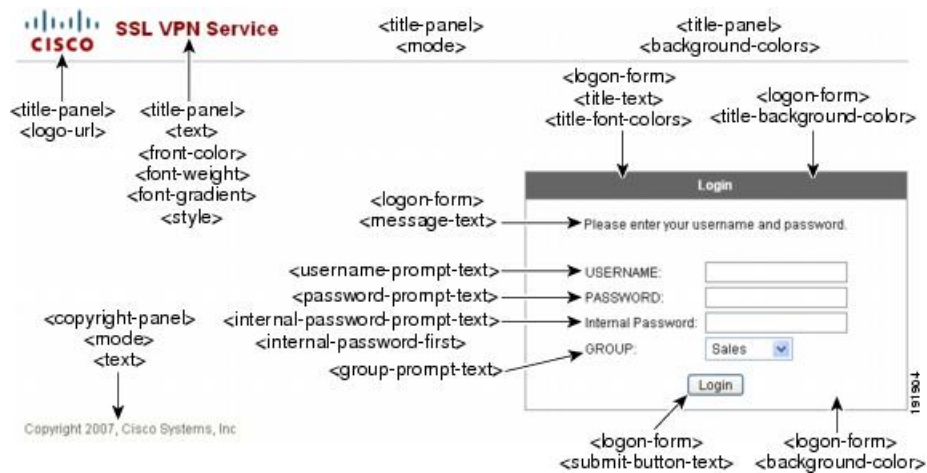
```

        <type>RSS</type>
        <mode>disable</mode>
        <title></title>
        <url l10n="yes"></url>
        <notitle></notitle>
        <column></column>
        <row></row>
        <height></height>
    </pane>
    <url-lists>
        <mode>group</mode>
    </url-lists>
    <home-page>
        <mode>standard</mode>
        <url></url>
    </home-page>
</portal>
</custom>

```

The following figure shows the Logon page and its customizing XML tags. All these tags are nested within the higher-level tag <auth-page>.

Figure 2: Logon Page and Associated XML Tags



The following figure shows the Language Selector drop-down list that is available on the Logon page, and the XML tags for customizing this feature. All these tags are nested within the higher-level <auth-page> tag.

Figure 3: Language Selector on Logon Screen and Associated XML Tags



The following figure shows the Information Panel that is available on the Logon page, and the XML tags for customizing this feature. This information can appear to the left or right of the login box. These tags are nested within the higher-level <auth-page> tag.


```

hostname# import webvpn customization custom1
tftp://209.165.201.22/customization /General.xml
Accessing
tftp://209.165.201.22/customization/General.xml...!!!!!!!!!!!!!!!!!!!!!!!!!!!!!!!!!!!!!!!!!!!!!!!!!!!!!!!!!!!!!!!!!!!!!!!!!!!!!!
Writing file disk0:/cisco_config/97/custom1..
!!!!!!!!!!!!!!!!!!!!!!!!!!!!!!!!!!!!!!!!!!!!!!!!!!!!!!!!!!!!!!!!!!!!!!!!!!!!!!!!!!!!!!!!!!!!!!!!!!!!!!!!!!!!!!!!!!!!!!!!!!!!!!
329994 bytes copied in 5.350 secs (65998 bytes/sec)

```

Apply Customizations to Connection Profiles, Group Policies, and Users

After you create a customization, you can apply the customization to a connection profile (tunnel group), a group, or a user, with the **customization** command. The options displayed with this command are different depending on the mode you are in.



Note After you customize the portal pages, the changes do not take effect until you reload the ASA, or you disable and then enable clientless SSL.

Procedure

- Step 1** Switch to Clientless SSL VPN configuration mode:
- ```
webvpn
```
- Step 2** Switch to either tunnel-group, group-policy, or username Clientless SSL VPN configuration:
- ```
tunnel-group webvpn OR group-policy webvpn OR username webvpn
```
- Step 3** Apply a customization to a connection profile with name as the name of a customization to apply to the connection profile:
- ```
customization name
```
- Or apply a customization to a group or user. The following options are included:
- **none** disables the customization for the group or user, prevents the value from being inherited, and displays the default Clientless SSL VPN pages.
  - **value** name is the name of a customization for a group or user.

### Example:

This example enters tunnel-group Clientless SSL VPN configuration mode and enables the customization *cisco* for the connection profile *cisco\_telecommutes*:

```

hostname (config)# tunnel-group cisco_telecommuters webvpn-attributes
hostname (tunnel-group-webvpn)# customization cisco

```

This example enters group policy Clientless SSL VPN configuration mode, queries the security appliance for a list of customizations, and enables the customization *cisco* for the group policy *cisco\_sales*:

```

hostname (config)# group-policy cisco_sales attributes
hostname (config-group-policy)# webvpn

```

```
hostname(config-username-webvpn)# customization value ?
config-username-webvpn mode commands/options:
Available configured customization profiles:
 DfltCustomization
 cisco
hostname(config-group-webvpn)#customization value cisco
```

This example enters username Clientless SSL VPN configuration mode and enables the customization *cisco* for the user *cisco\_employee*:

```
hostname(config)# username cisco_employee attributes
hostname(config-username)# webvpn
hostname(config-username-webvpn)#customization value cisco
```

- Step 4** (Optional) Remove the command from the configuration and remove a customization from the connection profile:
- ```
[ no] customization name
```
- Step 5** (Optional) Remove the command from the configuration and revert to the default:
- ```
[no] customization {none | value name}
```
- Step 6** Show a list of existing customizations:
- ```
customization ?
```
-

Login Screen Advanced Customization

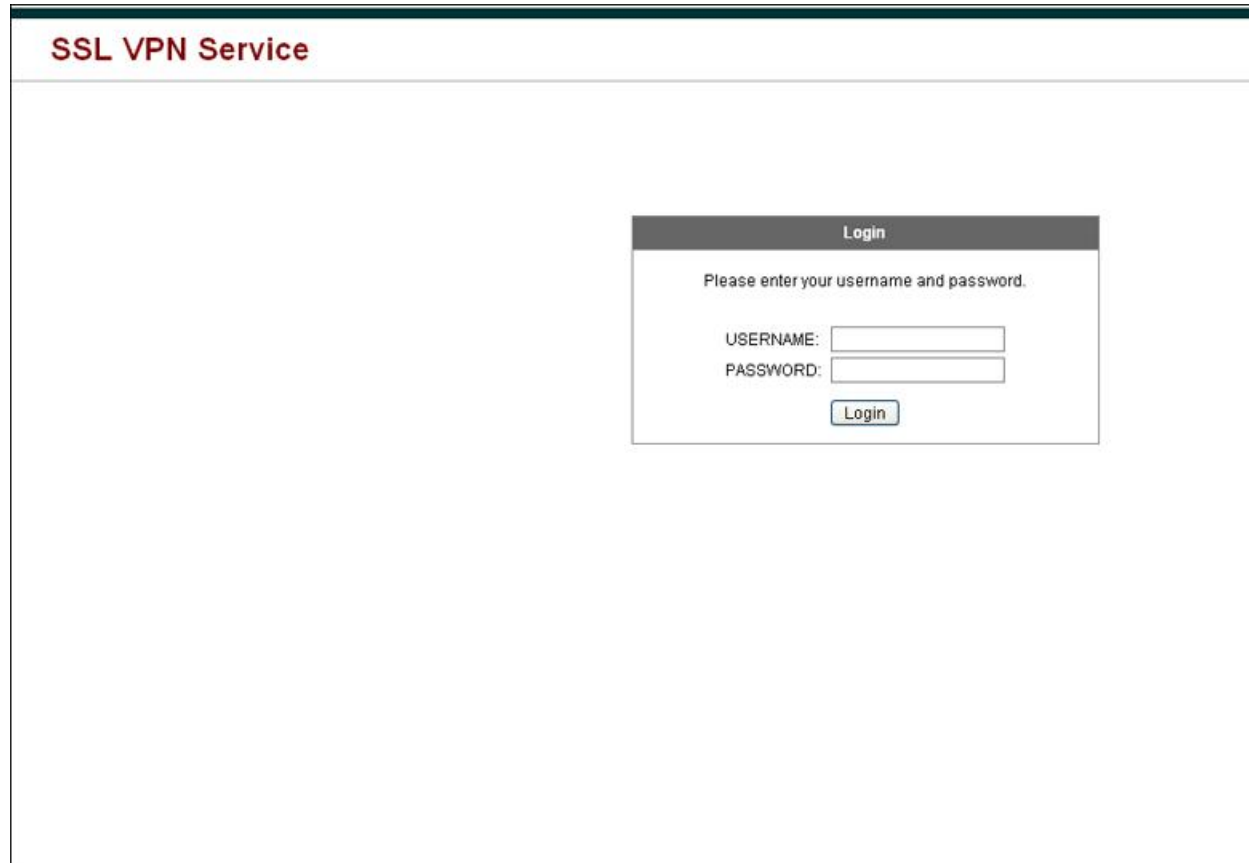
If you prefer to use your own, custom login screen, rather than changing specific screen elements of the login screen we provide, you can perform this advanced customization using the Full Customization feature.

With Full Customization, you provide the HTML for your own login screen, and you insert Cisco HTML code that calls functions on the ASA that create the Login form and the Language Selector drop-down list.

This section describes the modifications you need to make to your HTML code and the tasks required to configure the ASA to use your code.

The following figure shows the standard Cisco login screen that displays to Clientless SSL VPN users. The Login form is displayed by a function called by the HTML code.

Figure 6: Standard Cisco Login Page



The screenshot shows a web page titled "SSL VPN Service" in a dark red font. Below the title is a large white rectangular area containing a login form. The form has a dark grey header with the word "Login" in white. Below the header, the text "Please enter your username and password." is displayed. There are two input fields: "USERNAME:" followed by a text box, and "PASSWORD:" followed by a text box. Below these fields is a "Login" button with a light blue gradient.

The following figure shows the Language Selector drop-down list. This feature is an option for Clientless SSL VPN users and is also called by a function in the HTML code of the login screen.

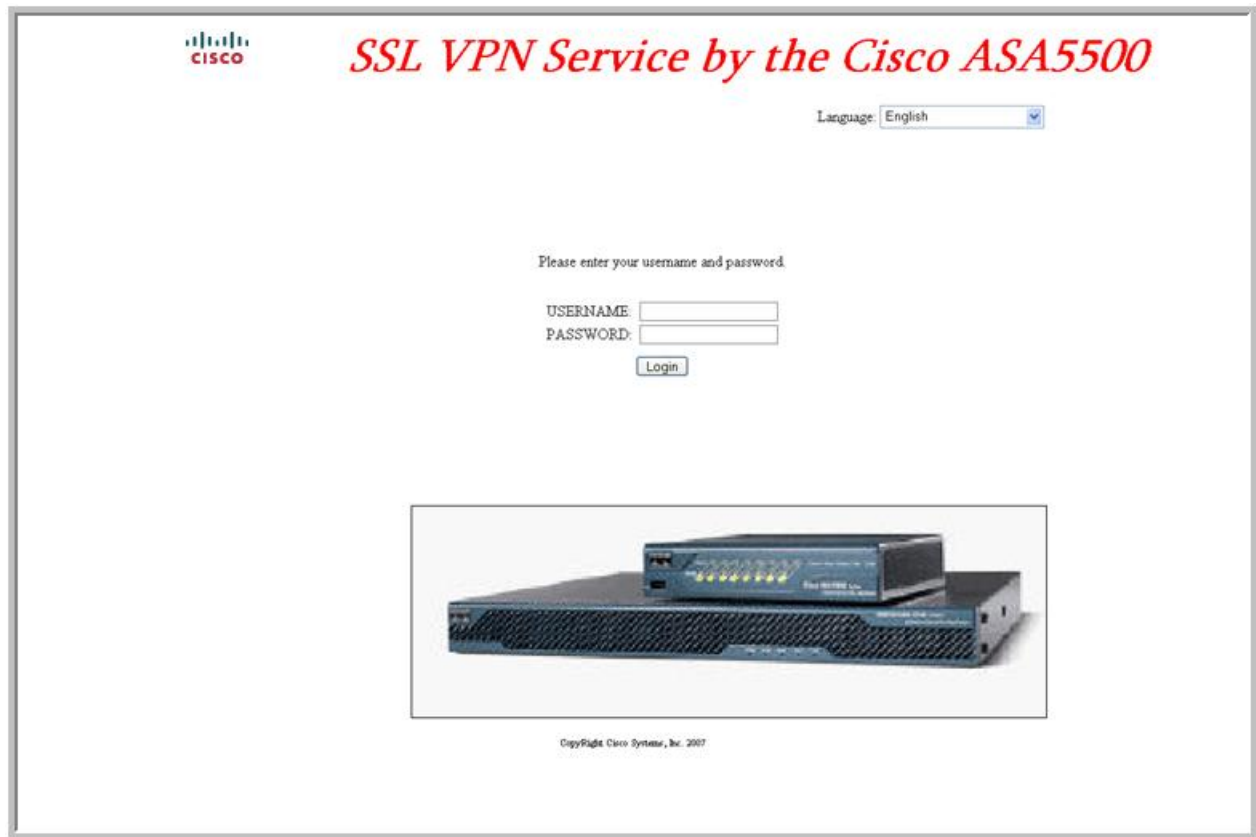
Figure 7: Language Selector Drop-down List



The screenshot shows a small rectangular window with a white background. On the left side, the word "Languages" is written. To its right is a drop-down menu. The menu is currently open, showing two options: "English" and "Spanish". A small blue downward-pointing arrow is visible next to the "English" option. The number "181735" is printed vertically on the right side of the window.

The following figure shows a simple example of a custom login screen enabled by the Full Customization feature.

Figure 8: Example of Full Customization of Login Screens



The following HTML code is used as an example and is the code that displays:

```
<head>
<meta http-equiv="Content-Type" content="text/html; charset=windows-1252">
<title>New Page 3</title>
<base target="_self">
</head>

<p align="center">
<font face="Snap ITC"
size="6" color="#FF00FF">
</font><font face="Snap ITC" color="#FF00FF" size="7">&nbsp;</font><i><b><font color="#FF0000"
size="7" face="Sylfaen"> SSL VPN Service by the Cisco ASA5500</font></b></i></p>

<body onload="cscs_ShowLoginForm('lform');cscs_ShowLanguageSelector('selector') ">

<table>

<tr><td colspan=3 height=20 align=right><div id="selector" style="width:
300px"></div></td></tr>
<tr><td></td><td></td><td></td></tr>
<tr>
<td height="379"></td>
<td height="379"></td>
<td align=middle valign=middle>
<div id=lform >
<p>&nbsp;</p>
</td></tr>
</table>
```

```

<p>&nbsp;</p>
<p>&nbsp;</p>
<p>Loading...</p>
</div>
</td>
</tr>
<tr>
<td width="251"></td>
<td width="1"></td>
<td align=right valign=right width="800">

</td></tr>

</table>

```

The indented code injects the Login form and the Language Selector on the screen. The function **cscs_ShowLoginForm('lform')** injects the logon form. **cscs_ShowLanguageSelector('selector')** injects the Language Selector.

Modify Your HTML File

Procedure

-
- Step 1** Name your file logon.inc. When you import the file, the ASA recognizes this filename as the logon screen.
- Step 2** Modify the paths of images used by the file to include `/+CSCOU+/.`
- Files that are displayed to remote users before authentication must reside in a specific area of the ASA cache memory represented by the path `/+CSCOU+/.` Therefore, the source for each image in the file must include this path.
- For example:
- src="/+CSCOU+/asa5520.gif"**
- Step 3** Insert the special HTML code below. This code contains the Cisco functions, described earlier, that inject the login form and language selector onto the screen.

```

<body onload="cscs_ShowLoginForm('lform');cscs_ShowLanguageSelector('selector')">

<table>

<tr><td colspan=3 height=20 align=right><div id="selector" style="width:
300px"></div></td></tr>
<tr><td></td><td></td><td></td></tr>
<tr>
<td height="379"></td>
<td height="379"></td>
<td align=middle valign=middle>
<div id=lform >
<p>&nbsp;</p>
<p>&nbsp;</p>
<p>&nbsp;</p>
<p>Loading...</p>
</div>
</td>
</tr>
<tr>

```

```

<td width="251"></td>
<td width="1"></td>
<td align="right" valign="right" width="800">

</td></tr>

</table>

```

Customize Bookmark Help

The ASA displays help content on the application panels for each selected bookmark. You can customize those help files or create help files in other languages. You then import them to flash memory for display during subsequent sessions. You can also retrieve previously imported help content files, modify them, and reimport them to flash memory.

Each application panel displays its own help file content using a predetermined filename. The prospective location of each is in the `/+CSCOE+/help/language/` URL within flash memory of the ASA. The following table shows the details about each of the help files you can maintain for VPN sessions.

Table 1: VPN Application Help Files

Application Type	Panel	URL of Help File in Flash Memory of the Security Appliance	Help File Provided By Cisco in English?
Standard	Application Access	<code>#CSCOE+/help/language/aaaeshelp</code>	Yes
Standard	Browse Networks	<code>#CSCOE+/help/language/leaseshelp</code>	Yes
Standard	AnyConnect Client	<code>#CSCOE+/help/language/taaseshelp</code>	Yes
Standard	Web Access	<code>#CSCOE+/help/language/webaseshelp</code>	Yes
Plug-in	MetaFrame Access	<code>#CSCOE+/help/language/mcahelp</code>	No
Plug-in	Terminal Servers	<code>#CSCOE+/help/language/tshelp</code>	Yes
Plug-in	Telnet/SSH Servers	<code>#CSCOE+/help/language/shhelp</code>	Yes
Plug-in	VNC Connections	<code>#CSCOE+/help/language/vncshelp</code>	Yes

language is the abbreviation of the language rendered by the browser. This field is *not* used for file translation; it indicates the language used in the file. To specify a particular language code, copy the language abbreviation from the list of languages rendered by your browser. For example, a dialog window displays the languages and associated language codes when you use one of the following procedures:

- Open Internet Explorer and choose **Tools > Internet Options > Languages > Add**.
- Open Mozilla Firefox and choose **Tools > Options > Advanced > General**, click **Choose** next to Languages, and click **Select a language to add**.

Import a Help file to Flash Memory

Procedure

Import a help content file to flash memory for display in Clientless SSL VPN sessions.

import webvpn webcontent *destination_url source_url*

- *destination_url* is the string in the URL of Help File in Flash Memory of the Security Appliance column.
 - *source_url* is the URL of the file to import. Valid prefixes are ftp://, http://, and tftp://.
-

Example

This example copies the help file *app-access-help.inc* to flash memory from the TFTP server at 209.165.200.225. The URL includes the abbreviation *en* for the English language:

```
hostname# import webvpn webcontent /+CSCOE+/help/en/app-access-hlp.inc
tftp://209.165.200.225/app-access-hlp.inc
```

Export a Previously Imported Help File from Flash Memory

Procedure

Retrieve a previously imported help content file for subsequent edits.

export webvpn webcontent *source_url destination_url*

- *source_url* is the string in “URL of Help File in Flash Memory of the Security Appliance.”
 - *destination_url* is **the target URL**. Valid prefixes are ftp:// and tftp://. The maximum number of characters is 255.
-

Example

This example copies the English language help file *file-access-hlp.inc* displayed on the Browser Networks panel to TFTP Server 209.165.200.225.

```
hostname# export webvpn webcontent /+CSCOE+/help/en/file-access-hlp.inc
tftp://209.165.200.225/file-access-hlp.inc
```

Understand Language Translation

The ASA provides language translation for the entire Clientless SSL VPN session. This includes login, logout banners, and portal pages displayed after authentication such as plugins and AnyConnect. Functional areas and their messages that are visible to remote users are organized into translation domains. The following table shows the translation domains and the functional areas translated.

Language Translation Domain Options

Translation Domain	Functional Areas Translated
AnyConnect	Messages displayed on the user interface of the Cisco AnyConnect VPN client.
banners	Message displayed when VPN access is denied for a clientless connection.
CSD	Messages for the Cisco Secure Desktop (CSD).
customization	Messages on the logon and logout pages, portal page, and all the messages customizable by the user.
plugin-ica	Messages for the Citrix plug-in.
plugin-rdp	Messages for the Remote Desktop Protocol plug-in.
plugin-rdp2	Messages for the Java Remote Desktop Protocol plug-in.
plugin-telnet,ssh	Messages for the Telnet and SSH plug-in.
plugin-vnc	Messages for the VNC plug-in.
PortForwarder	Messages displayed to Port Forwarding users.
url-list	Text that user specifies for URL bookmarks on the portal page.
webvpn	All the layer 7, AAA and portal messages that are not customizable.

The ASA includes a translation table template for each domain that is part of standard functionality. The templates for plug-ins are included with the plug-ins and define their own translation domains.

You can export the template for a translation domain, which creates an XML file of the template at the URL you provide. The message fields in this file are empty. You can edit the messages and import the template to create a new translation table object that resides in flash memory.

You can also export an existing translation table. The XML file created displays the messages you edited previously. Reimporting this XML file with the same language name creates a new version of the translation table object, overwriting previous messages.

Some templates are static, but some change based on the configuration of the ASA. Because you can customize the logon and logout pages, portal page, and URL bookmarks for clientless users, the **ASA generates the customization and url-list** translation domain templates dynamically, and the template automatically reflects your changes to these functional areas.

After creating translation tables, they are available to customization objects that you create and apply to group policies or user attributes. With the exception of the AnyConnect translation domain, a translation table has no affect, and messages are not translated on user screens until you create a customization object, identify a translation table to use in that object, and specify that customization for the group policy or user. Changes to the translation table for the AnyConnect domain are immediately visible to AnyConnect client users.

Create Translation Tables

You can create translation tables in both single context mode and multi-context mode:

Procedure

Step 1 Export a translation table template to a computer.

export webvpn translation-table

Example:

This example shows available translation table templates and exports them for the customization domain, which affects messages displayed for users in Clientless SSL VPN sessions. The filename of the XML file created is *portal* (user-specified) and contains empty message fields.

```
hostname# show import webvpn translation-table
Translation Tables' Templates:
customization
AnyConnect

PortForwarder
url-list
webvpn
Citrix-plugin
RPC-plugin
Telnet-SSH-plugin
VNC-plugin

Translation Tables:

hostname# export webvpn translation-table customization template
tftp://209.165.200.225/portal
```

Step 2 Edit the translation table XML file.

Example:

This example shows a portion of the template that was exported as *portal*. The end of this output includes a message ID field (*msgid*) and a message string field (*msgstr*) for the message which is displayed on the portal page when a user establishes a Clientless SSL VPN session. The complete template contains many pairs of message fields.

```
# Copyright (C) 2006 by Cisco Systems, Inc.
#
#, fuzzy
msgid ""
msgstr ""
"Project-Id-Version: ASA\n"
```

```
"Report-Msgid-Bugs-To: vkamyshe@cisco.com\n"
"POT-Creation-Date: 2007-03-12 18:57 GMT\n"
"PO-Revision-Date: YEAR-MO-DA HO:MI+ZONE\n"
"Last-Translator: FULL NAME <EMAIL@ADDRESS>\n"
"Language-Team: LANGUAGE <LL@li.org>\n"
"MIME-Version: 1.0\n"
"Content-Type: text/plain; charset=UTF-8\n"
"Content-Transfer-Encoding: 8bit\n"

#: DfltCustomization:24 DfltCustomization:64
msgid "Clientless SSL VPN Service"
msgstr ""
```

Step 3 Import the translation table.

import webvpn translation-table

Example:

This example imports the XML file. *es-us* is the abbreviation for Spanish spoken in the United States.

```
hostname# import webvpn translation-table customization language es-us
tftp://209.165.200.225/portal
hostname# !!!!!!!!!!!!!!!!!!!!!!!!!!!!!!!!!!!!!!!!!!!!!!!
hostname# show import webvpn translation-table
Translation Tables' Templates:
AnyConnect
PortForwarder

customization
keepout
url-list
webvpn
Citrix-plugin
RPC-plugin
Telnet-SSH-plugin
VNC-plugin

Translation Tables:
es-us customization
```

If you import a translation table for the AnyConnect domain, your changes are effective immediately. If you import a translation table for any other domain, you must create a customization object, identify the translation table to use in that object, and specify that customization object for the group policy or user.

Reference the Language in a Customization Object

This section describes how to export the customization template, edit it, and import it as a customization object so that you can refer to it.

Before you begin

For the customization object to call these translation tables correctly, the tables must have been previously imported using the same names. These names must be compatible with language options of the browser.

Procedure

Step 1 Export a customization template to a URL where you can edit it.

export webvpn customization template

This example exports the template and creates the copy *sales* at the URL specified.

```
hostname# export webvpn customization template tftp://209.165.200.225/sales
```

Step 2 Two areas of XML code in the customization template pertain to translation tables. Edit the customization template and reference the previously-imported translation table.

This example specifies the translation table to use.

- The `<languages>` tag in the XML code is followed by the names of the translation tables. In this example, they are en, ja, zh, ru, and ua.
- The `<default-language>` tag specifies the language that the remote user first encounters when connecting to the ASA. In the example code above, the language is English.

```
<localization>
  <languages>en, ja, zh, ru, ua</languages>
  <default-language>en</default-language>
</localization>
```

This example affects the display of the Language Selector and includes the `<language-selector>` tag and the associated `<language>` tags that enable and customize the Language Selector:

- The `<language-selector>` group of tags includes the `<mode>` tag that enables and disables the displaying of the Language Selector and the `<title>` tag that specifies the title of the drop-down box listing the languages.
- The `<language>` group of tags includes the `<code>` and `<text>` tags that map the language name displayed in the Language Selector drop-down box to a specific translation table.

```
<auth-page>
  ....
  <language-selector>
    <mode>enable</mode>
    <title l10n="yes">Language:</title>
    <language>
      <code>en</code>
      <text>English</text>
    </language>
    <language>
      <code>es-us</code>
      <text>Spanish</text>
    </language>
  </language-selector>
```

Step 3 Save the file after making your changes.

Step 4 Import the customization template as a new object.

```
import webvpn customization
```

Example:

Step 5 Show the new customization object *sales*.

```
show import webvpn customization
```

Example:

```
hostname# import webvpn customization sales tftp://209.165.200.225/sales
hostname# !!!!!!!!!!!!!!!!!!!!!!!!!!!!!!!!!!!!!!!!!!!!!!!
```

Change a Group Policy or User Attributes to Use the Customization Object

This section describes how to activate your changes for specific groups or users.

Procedure

Step 1 Switch to Clientless SSL VPN configuration mode.

```
webvpn
```

Step 2 Switch to group-policy Clientless SSL VPN configuration mode.

```
group-policy webvpn
```

Step 3 Enable the customization object.

```
customization
```

Example

This example shows the customization object *sales* enabled in the group policy *sales*.

```
hostname(config)# group-policy sales attributes
hostname(config-group-policy)# webvpn
hostname(config-group-webvpn)# customization value sales
```