



Dashboard

- [Dashboard, on page 1](#)
- [VPN Dashboard Overview, on page 6](#)

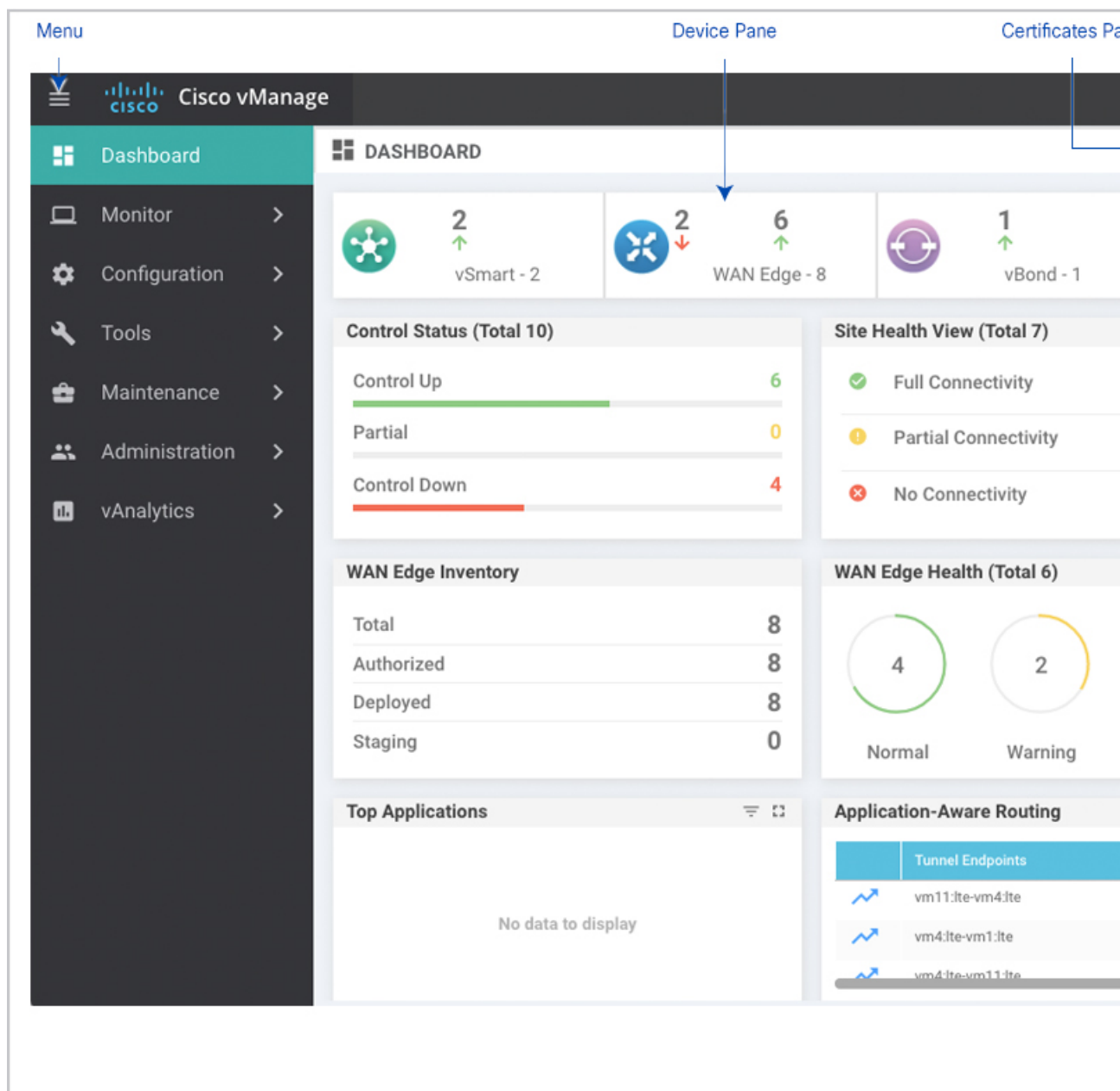
Dashboard

Use the dashboard screen to monitor, at a glance, the overall health of the Viptela overlay network.

Top Bar

The top bar is located at the top of every vManage screen and includes the following screen elements:

- Menu icon—Click the icon to expand or collapse the vManage menu. The vManage menu is closed by default.
- vManage application server logo. To change the logo, see [How to Load a Custom Logo onto the vManage Web Application Server](#).
- Cloud onRamp icon—Enables Cloud onRamp service to optimize access to cloud applications. When Cloud onRamp service is enabled, the icon turns blue.
- Tasks icon—Click on the icon to see a list of all active and completed tasks started from the vManage NMS. While the task is in progress, the Tasks tab displays a counter on the top. When the task is completed, the count disappears and Completed Tasks count is incremented. To view details about any task, click the task to display its Status screen.
- Alarm bell icon—Displays the total count of all active alarms. Click on the icon to see a list of all active and cleared alarms. To view details about any alarm, click the alarm to display its Alarms Details screen.
- Help—Links to product help, software version information about the vManage NMS software, and current time and timezone on the vManage server.
- Hostname—Hostname of the vManage NMS that you are logged into.
- User profile drop-down—Click to sign out or edit user-related options in your profile.



Device Pane

The Device pane, which runs across the top of the Dashboard screen, displays all control connections from the vManage NMS to the vSmart controllers, WAN Edge routers, and vBond orchestrators in the overlay network. It also displays the status of the vManage NMSs in the network.

For each device, the Device pane shows:

- Total number of connections.
- Number of up connections.
- Number of down connections.

Click the number or the Up or Down arrow to display a table with detailed information for each connection. The Dashboard page automatically refreshes when the status of the members of a vManage cluster changes.

Click the More Actions icon to the right of each table row to access the Device Dashboard or Real Time view in the Monitor ► Network screen or to access the Tools ► SSH Terminal screen.

Reboot Pane

The Reboot pane displays the total number of reboots in the last 24 hours for all devices in the network, including soft and cold reboots and reboots that occurred as a result of power-cycling a device. Click the Reboot pane to open the Reboot popup window which lists, for each reboot, the system IP and hostname of the device that rebooted, the time the reboot occurred, and the reason for the reboot. If the same device reboots more than once, each reboot option is reported separately.

In the Reboot popup window, click the Crashes tab to list, for all device crashes, the system IP and hostname of the device on which the crash occurred, the crash index, and the core time and filename.

Certificates Pane

The Certificates pane displays the state of all certificates on all controller devices, and it shows a count of all expired or invalidated certificates. Click the Certificates pane to open the Certificate Details popup window, which displays the hostname and system IP of the device on which the certificate is installed, the certificate serial number, and its expiration date and status.

Control Status Pane

The Control Status pane displays whether vSmart and WAN Edge devices are connected to the required number of vSmart controllers. Each vSmart controller must connect to all other vSmart controllers in the network. Each WAN Edge router must connect to the configured maximum number of vSmart controllers.

The Control Status pane shows three counts:

- Control Up—Total number of devices with the required number of operational control plane connections to a vSmart controller.
- Partial—Total number of devices with some, but not all, operational control plane connections to vSmart controllers.
- Control Down—Total number of devices with no control plane connection to a vSmart controller.

Click any row to display a table with device details. Click the More Actions icon to the right of each table row to access the Device Dashboard or Device Details view in the Monitor ► Network screen.

Site Health View Pane

The Site Health View pane displays the state of a site's data connections. When a site has multiple WAN Edge routers, this pane displays the state for the entire site, not for individual devices. The Site Health View pane displays three states:

- Full WAN Connectivity—Total number of sites where all BFD sessions on all WAN Edge routers are in the up state.
- Partial WAN Connectivity—Total number of sites where a TLOC or a tunnel is in the down state. These sites still have limited data plane connectivity.

- **No WAN Connectivity**—Total number of sites where all BFD sessions on all WAN Edge routers are in the down state. These sites have no data plane connectivity.

Click a row to display a popup window with detailed information on each site, node, or tunnel. Click the More Actions icon to the right of each table row to access the Device Dashboard or Real Time view in the Monitor ► Network screen or the Tools ► SSH Terminal screen.

Transport Interface Distribution

The Transport Interface Distribution pane displays interface usage in the last 24 hours for all WAN Edge interfaces in VPN 0. This includes all TLOC interfaces. Click a row to see details of interface usage.

WAN Edge Inventory Pane

The WAN Edge Inventory pane provides four counts:

- **Total**—Total number of WAN Edge routers whose authorized serial number has been uploaded on the vManage server. The serial number is uploaded in the Configuration ► Devices screen.
- **Authorized**—Total number of authorized WAN Edge routers in the overlay network. These are routers marked as Valid in the Configuration ► Certificates ► WAN Edge List screen.
- **Deployed**—Total number of deployed WAN Edge routers. These are routers marked as Valid that are now operational in the network.
- **Staging**—Total number of WAN Edge routers in staging state. These are routers you configure at a staging site before shipping them to the actual branch and making them a part of the overlay network. These routers do not take part in any routing decisions nor do they affect network monitoring through the vManage NMS.

Click any row to display a table with the hostname, system IP, site ID, and other details of each router.

WAN Edge Health Pane

The WAN Edge Health pane displays an aggregated view for each router state and a count of how many WAN Edge routers are in that state, thereby describing the health of the hardware nodes. The three states are:

- **Normal**—Number of routers with memory, hardware, and CPU in normal state. Using less than 70% of total memory or total CPU is classified as normal.
- **Warning**—Number of routers with memory, hardware, or CPU in warning state. Using between 70% and 90% of total memory or total CPU is classified as a warning.
- **Error**—Number of routers with memory, hardware, or CPU in error state. Using more than 90% of total memory or total CPU is classified as an error.

Click the number or the state to display a table with the last 12 or 24 hours of memory usage, CPU utilization, and hardware-related alarms, including temperature, power supply, and PIM modules. Click the More Actions icon to the right of each table row to access the Device Dashboard or Device Details view in the Monitor ► Network screen or the Tools ► SSH Terminal screen.

Transport Health Pane

The Transport Health pane displays the aggregated average loss, latency, and jitter for all links and all combinations of colors (for example, all LTE-to-LTE links, all LTE-to-3G links).

From the Type drop-down, select loss, latency, or jitter.

Click the Filter icon to select a time period for which to display data.

Click the Expand icon to open the Transport Health pop-up window. This full-screen window displays a more detailed view of the same information. To display the information in tabular format, click the Details tab. You can change the displayed type and time period as described above.

Top Applications Pane

The Top Applications pane displays DPI flow information for traffic transiting WAN Edge routers in the overlay network.

Click the Filter icon to select a time period for which to display data. From the VPN drop-down list, select a VPN to display DPI information for all flows in that VPN.

Click the Expand icon to open the Top Applications pop-up window. This full-screen window displays a more detailed view of the same information. You can change the VPN and time period as described above.

Application-Aware Routing Pane

The Application-Aware Routing pane displays the 10 worst tunnels based on criteria you specify from the Type drop-down list, including loss, latency, and jitter. So, if you choose loss, this pane shows the ten tunnels with the greatest average loss over the last 24 hours.

Click any row to display a graphical representation of the data. Select a time period for which to display data or click Custom to display a drop-down for specifying a custom time period.

Click the Expand icon to open the Application-Aware Routing pop-up window. This full-screen window displays the 25 worst tunnels based on criteria you specify from the Type drop-down list, including loss, latency, and jitter.

FireWall Enforcement Pane

The FireWall Enforcement pane displays the number of sessions that were inspected or dropped over the specified time period.

Click the Filter icon to select a time period for which to display data.

Click the Expand icon to open the FireWall Enforcement pop-up window. This full-screen window displays a more detailed view of the same information. To display the information in tabular format, click the Details tab. You can change the time period as described above.

Top Signature Hits Pane

The Top Signature Hits pane displays the Intrusion Prevention System (IPS) signature violations by severity or by count over the specified time period.

Click the Filter icon to select a time period for which to display data.

Click the Expand icon to open the Top Signature Hits pop-up window. This full-screen window displays a more detailed view of the same information. To display the information in tabular format, click the Details tab. You can change the time period as described above.

URL Filtering Pane

The URL Filtering pane displays the number and types of URLs that were blocked or allowed over the specified time period.

Click the Filter icon to select a time period for which to display data.

Click the Expand icon to open the URL Filtering pop-up window. This full-screen window displays a more detailed view of the same information. To display the information in tabular format, click the Details tab. You can change the time period as described above.

Web Server Certificate Expiration Date Notification

When you establish a secure connection between your web browser and the vManage server using authentication certificates, you configure the time period for which the certification is valid, in the Administration ► Settings screen. At the end of this time period, the certificate expires. The Web Server Certificate bar shows the expiration date and time.

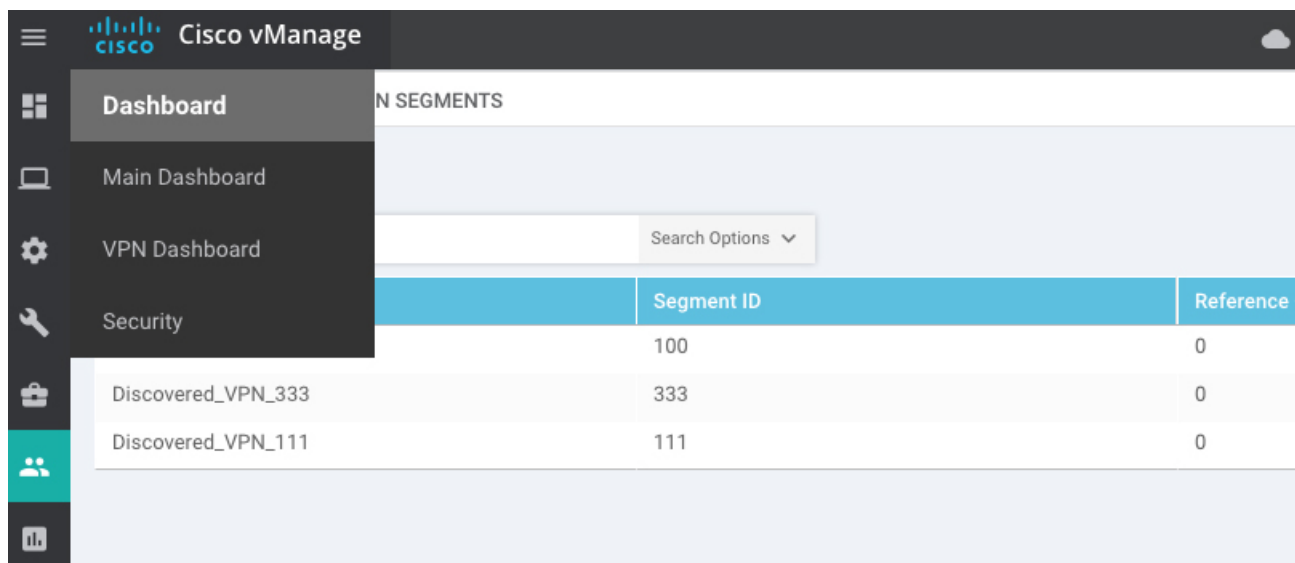
Starting 60 days before the certificate expires, the vManage Dashboard displays a notification indicating that the certificate is about to expire. This notification is then redisplayed 30, 15, and 7 days before the expiration date, and then daily.

Maintenance Window Alert Notification

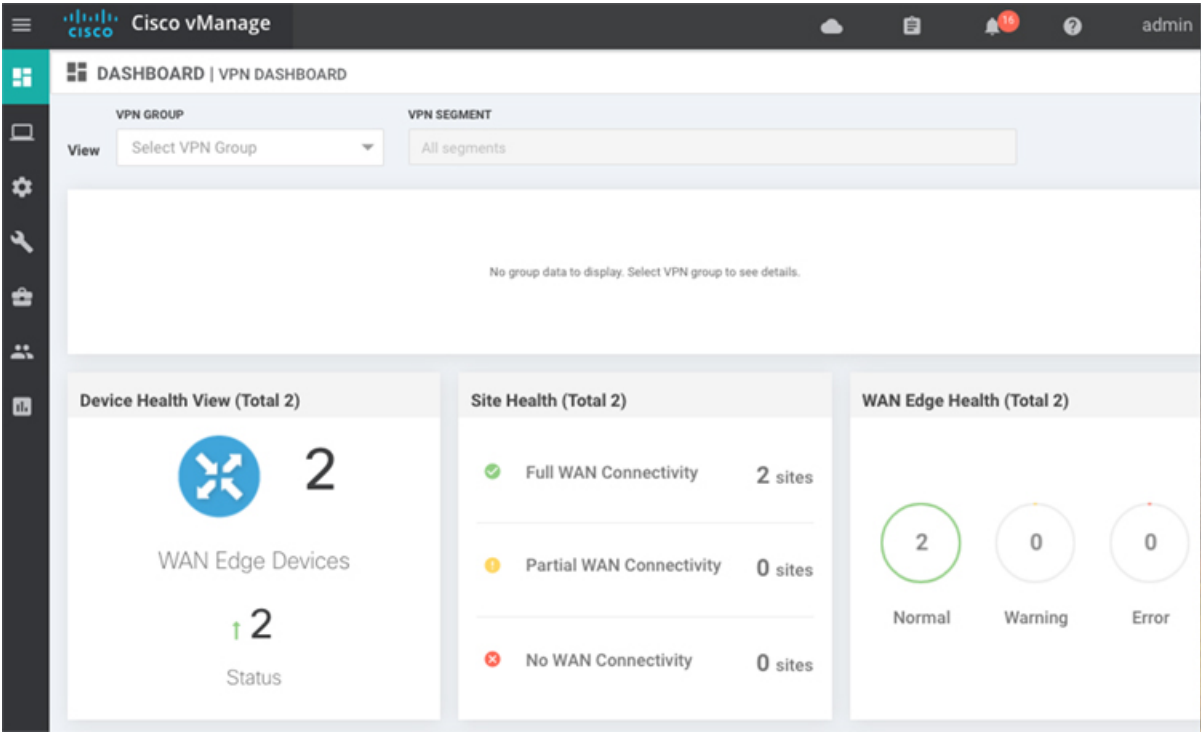
If an upcoming maintenance window is configured on the vManage server, in the Administration ► Settings screen, the vManage Dashboard displays a maintenance window alert notification two days before the start of the window.

VPN Dashboard Overview

Users configured with VPN group can access only the VPN Dashboard, and it is read-only access. User with Admin access can create the VPN groups and has access to both Admin Dashboard and VPN Dashboard(s). Admin user can view these dashboards in the left panel as shown in the following figures:



Segment ID	Reference	
100	0	
Discovered_VPN_333	0	
Discovered_VPN_111	0	



520038

