



Cisco Catalyst SD-WAN Bridging Configuration Guide, Releases 26.x and Later

First Published: 2026-01-21

Last Modified: 2026-03-09

Americas Headquarters

Cisco Systems, Inc.
170 West Tasman Drive
San Jose, CA 95134-1706
USA
<http://www.cisco.com>
Tel: 408 526-4000
800 553-NETS (6387)
Fax: 408 527-0883

THE SPECIFICATIONS AND INFORMATION REGARDING THE PRODUCTS IN THIS MANUAL ARE SUBJECT TO CHANGE WITHOUT NOTICE. ALL STATEMENTS, INFORMATION, AND RECOMMENDATIONS IN THIS MANUAL ARE BELIEVED TO BE ACCURATE BUT ARE PRESENTED WITHOUT WARRANTY OF ANY KIND, EXPRESS OR IMPLIED. USERS MUST TAKE FULL RESPONSIBILITY FOR THEIR APPLICATION OF ANY PRODUCTS.

THE SOFTWARE LICENSE AND LIMITED WARRANTY FOR THE ACCOMPANYING PRODUCT ARE SET FORTH IN THE INFORMATION PACKET THAT SHIPPED WITH THE PRODUCT AND ARE INCORPORATED HEREIN BY THIS REFERENCE. IF YOU ARE UNABLE TO LOCATE THE SOFTWARE LICENSE OR LIMITED WARRANTY, CONTACT YOUR CISCO REPRESENTATIVE FOR A COPY.

The Cisco implementation of TCP header compression is an adaptation of a program developed by the University of California, Berkeley (UCB) as part of UCB's public domain version of the UNIX operating system. All rights reserved. Copyright © 1981, Regents of the University of California.

NOTWITHSTANDING ANY OTHER WARRANTY HEREIN, ALL DOCUMENT FILES AND SOFTWARE OF THESE SUPPLIERS ARE PROVIDED "AS IS" WITH ALL FAULTS. CISCO AND THE ABOVE-NAMED SUPPLIERS DISCLAIM ALL WARRANTIES, EXPRESSED OR IMPLIED, INCLUDING, WITHOUT LIMITATION, THOSE OF MERCHANTABILITY, FITNESS FOR A PARTICULAR PURPOSE AND NON-INFRINGEMENT OR ARISING FROM A COURSE OF DEALING, USAGE, OR TRADE PRACTICE.

IN NO EVENT SHALL CISCO OR ITS SUPPLIERS BE LIABLE FOR ANY INDIRECT, SPECIAL, CONSEQUENTIAL, OR INCIDENTAL DAMAGES, INCLUDING, WITHOUT LIMITATION, LOST PROFITS OR LOSS OR DAMAGE TO DATA ARISING OUT OF THE USE OR INABILITY TO USE THIS MANUAL, EVEN IF CISCO OR ITS SUPPLIERS HAVE BEEN ADVISED OF THE POSSIBILITY OF SUCH DAMAGES.

Any Internet Protocol (IP) addresses and phone numbers used in this document are not intended to be actual addresses and phone numbers. Any examples, command display output, network topology diagrams, and other figures included in the document are shown for illustrative purposes only. Any use of actual IP addresses or phone numbers in illustrative content is unintentional and coincidental.

All printed copies and duplicate soft copies of this document are considered uncontrolled. See the current online version for the latest version.

Cisco has more than 200 offices worldwide. Addresses and phone numbers are listed on the Cisco website at www.cisco.com/go/offices.

Cisco and the Cisco logo are trademarks or registered trademarks of Cisco and/or its affiliates in the U.S. and other countries. To view a list of Cisco trademarks, go to this URL: <https://www.cisco.com/c/en/us/about/legal/trademarks.html>. Third-party trademarks mentioned are the property of their respective owners. The use of the word partner does not imply a partnership relationship between Cisco and any other company. (1721R)

© 2026–2026 Cisco Systems, Inc. All rights reserved.



CONTENTS

CHAPTER 1

Read Me First 1

CHAPTER 2

Bridging 3

Components of Bridging 3

VLANs (concept) 4

SVI 5

VRF 5

VLAN and Switchport Support 5

Restrictions for Cisco IOS XE Catalyst SD-WAN Devices 6

Configure Bridging Using Cisco SD-WAN Manager 6

Configure Switchports 7

Configure VPN Interface SVI using Cisco SD-WAN Manager 9

Configure Bridging Using CLI for Cisco IOS XE Catalyst SD-WAN Devices 13

Configure VLANs 13

Configure SVI 14

CHAPTER 3

Layer 2 and Layer 3 Flex Port Support 17

Information About Layer 2 and Layer 3 Flex Port Support 17

Prerequisites for Layer 2 and Layer 3 Flex Port Support 18

Restrictions For Layer 2 and Layer 3 Flex Port Support 18

Use Cases for Layer 2 and Layer 3 Flex Port Support 18

Configure Layer 2 and Layer 3 Flex Port Support using Cisco SD-WAN Manager 18

Troubleshoot Layer 2 and Layer 3 Flex Port Support 20



CHAPTER 1

Read Me First



Note To achieve simplification and consistency, the Cisco SD-WAN solution has been rebranded as Cisco Catalyst SD-WAN. In addition, from Cisco IOS XE SD-WAN Release 17.12.1a and Cisco Catalyst SD-WAN Release 20.12.1, the following component changes are applicable: **Cisco vManage** to **Cisco Catalyst SD-WAN Manager**, **Cisco vAnalytics** to **Cisco Catalyst SD-WAN Analytics**, **Cisco vBond** to **Cisco Catalyst SD-WAN Validator**, **Cisco vSmart** to **Cisco Catalyst SD-WAN Controller**, and **Cisco Controllers** to **Cisco Catalyst SD-WAN Control Components**. See the latest Release Notes for a comprehensive list of all the component brand name changes. While we transition to the new names, some inconsistencies might be present in the documentation set because of a phased approach to the user interface updates of the software product.

Related References

- [Cisco Catalyst SD-WAN Control Components Compatibility Matrix and Server Recommendations](#)
- [Cisco Catalyst SD-WAN Device Compatibility](#)

User Documentation

- [User Documentation for Cisco IOS XE Catalyst SD-WAN Release 17](#)

Communications, Services, and Additional Information

- Sign up for Cisco email newsletters and other communications at: [Cisco Profile Manager](#).
- For information on the latest technical, advanced, and remote services to increase the operational reliability of your network visit [Cisco Services](#).
- To browse and discover secure, validated enterprise-class apps, products, solutions, and services, visit [Cisco Devnet](#).
- To obtain general networking, training, and certification titles from Cisco Press Publishers, visit [Cisco Press](#).
- To find warranty information for a specific product or product family, visit [Cisco Warranty Finder](#).
- To view open and resolved bugs for a release, access the [Cisco Bug Search Tool](#).
- To submit a service request, visit [Cisco Support](#).

Documentation Feedback

To provide feedback about Cisco technical documentation use the feedback form available in the right pane of every online document.



CHAPTER 2

Bridging

A Cisco IOS XE Catalyst SD-WAN device can act as a transparent bridge, switching traffic between LANs that are part of a Virtual Local Area Network (VLAN) at the site of local router. To implement bridging, each VLAN acts as a separate broadcast domain, and each has its own Ethernet switching table (or MAC table) to use for switching traffic within the broadcast domain. Multiple VLANs can coexist in a single Cisco IOS XE Catalyst SD-WAN device.

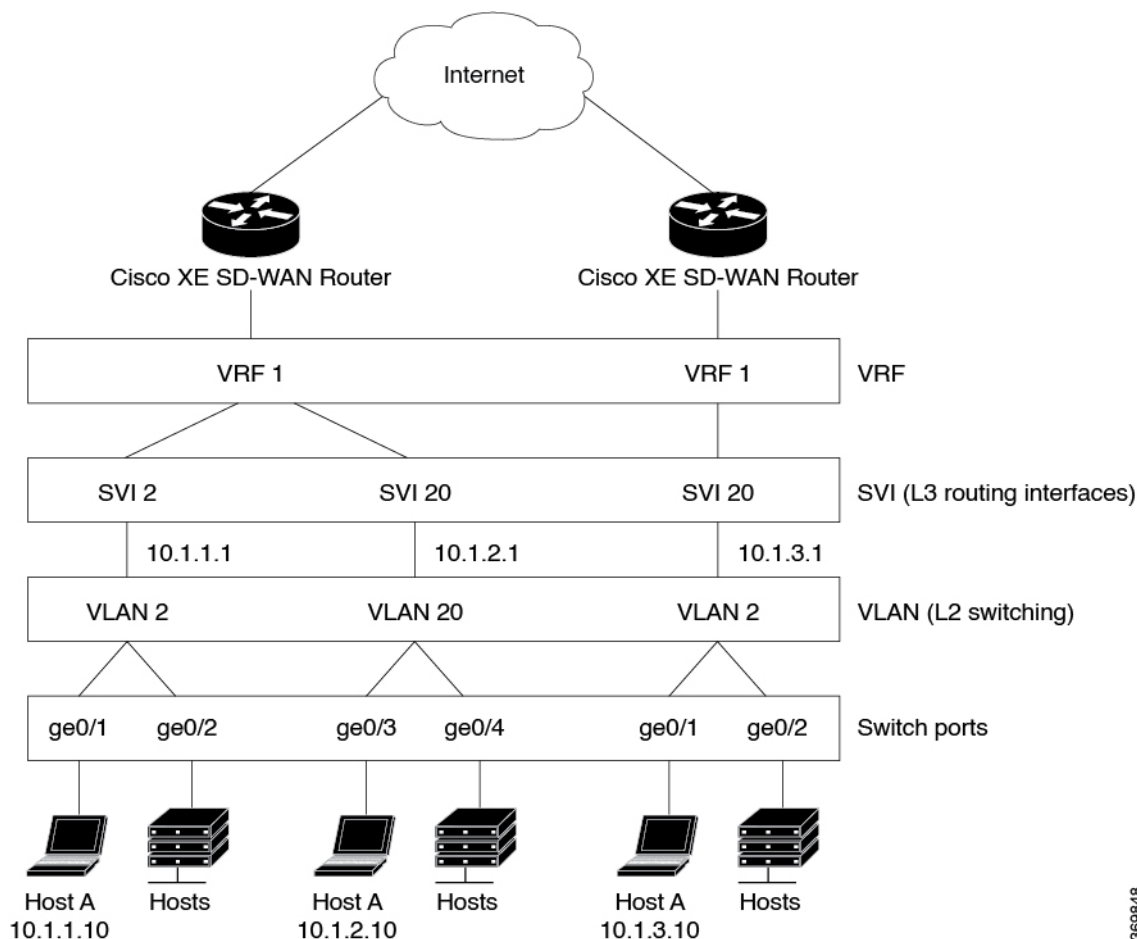
To allow hosts associated with different VLANs to communicate with each other, Cisco IOS XE Catalyst SD-WAN devices support Switch Virtual Interface (SVI). SVIs provide Layer 3 routing services to allow traffic exchange between various VLANs. Each VLAN can have a single SVI.

- [Components of Bridging, on page 3](#)
- [VLAN and Switchport Support, on page 5](#)
- [Restrictions for Cisco IOS XE Catalyst SD-WAN Devices, on page 6](#)
- [Configure Bridging Using Cisco SD-WAN Manager, on page 6](#)
- [Configure Bridging Using CLI for Cisco IOS XE Catalyst SD-WAN Devices , on page 13](#)

Components of Bridging

The following figure illustrates the components of bridging in Cisco Catalyst SD-WAN for Cisco IOS XE Catalyst SD-WAN devices.

Figure 1: Components of Bridging



369848

VLANs (concept)

What is a VLAN

A VLAN is a switched network that is logically segmented by function, project team, or application, without regard to the physical locations of the users. VLANs provide the means to divide LAN into smaller broadcast domains. VLANs have the same attributes as physical LANs, but you can group end stations even if they are not physically located on the same LAN segment. Any device port can belong to a VLAN, and unicast, broadcast, and multicast packets are forwarded and flooded only to end stations in the VLAN. Each VLAN is considered a logical network, and packets destined for stations that do not belong to the VLAN must be forwarded through a router or a device supporting fallback bridging. In a device stack, VLANs can be formed with ports across the stack. Because a VLAN is considered a separate logical network, it contains its own bridge Management Information Base (MIB) information and can support its own implementation of spanning tree.

VLANs are often associated with IP subnetworks. For example, all the end stations in a particular IP subnet belong to the same VLAN. Interface VLAN membership on the device is assigned manually on an interface-by-interface basis. When you assign device interfaces to VLANs by using this method, it is known as interface-based, or static, VLAN membership. Traffic between VLANs must be routed. The device can

route traffic between VLANs by using device virtual interfaces (SVIs). An SVI must be explicitly configured and assigned an IP address to route traffic between VLANs.

Ports that connect to WAN segments are associated with VLANs. In the Cisco Catalyst SD-WAN overlay network, these ports are the physical Gigabit Ethernet interfaces on Cisco IOS XE Catalyst SD-WAN devices. Specifically, they are the base interfaces, for example, Gi0/1/0.

There is a one-to-one association between an SVI and a VLAN. An SVI can be associated only with one VLAN, and the other way around.

Native VLANs

Native VLAN is used primarily on trunk ports. VLAN provides backwards compatibility for devices that do not support VLAN tagging. For example, native VLAN allows trunk ports to accept all traffic regardless of what devices are connected to the port. Without native VLAN, the trunk ports would accept traffic only from devices that support VLAN tagging.

SVI

VLANs divide a LAN into smaller broadcast domains. Each VLAN is a separate broadcast domain, and switching within that domain directs traffic to destinations within the VLAN. The result is that hosts within a single bridge domain can communicate among themselves, but cannot communicate with hosts in other VLANs.

The only way for the traffic to cross Layer 2 VLAN boundaries to allow communication between VLANs is through Layer 3 routing. Switch Virtual Interfaces (SVI) on Cisco IOS XE Catalyst SD-WAN devices is designed to provide basic Layer 3 functions for the Layer 2 switch ports that belong to a specific VLAN. SVI is a logical interface that inherits all the properties of a regular interface, but is not associated with a port or with a physical interface.

The switch ports on Cisco IOS XE Catalyst SD-WAN devices do not natively support Layer 3 addresses. They must be assigned to an SVI and use a VLAN interface to enable Layer 3 features.

To configure IP routing, you need to assign IP addresses to Layer 3 network interfaces, in this case SVI. This enables communication with the hosts on those interfaces that use IP. IP routing is disabled by default, and no IP addresses are assigned to Switch Virtual Interfaces (SVIs).

VRF

Virtual Routing and Forwarding (VRF) associates a VRF instance with an SVI to map VLANs to different logical or physical VPN WAN connections. VRF allows a single physical router to have multiple route tables to enable multiple routing instances. In a single network component, multiple VRF resources create the isolation between virtual networks.

VLAN and Switchport Support

Supported Switch Modules

The following switch modules are supported.

Cisco 1000 Series Integrated Services Routers:

- NIM-ES2-4: Single-wide NIM form factor
- NIM-ES2-8: Single-wide NIM form factor
- NIM-ES2-8-P: Single-wide NIM form factor

Cisco 4000 Series Integrated Services Routers (see [Interfaces and Modules](#)):

- NIM-ES2-4: Single-wide NIM form factor
- NIM-ES2-8: Single-wide NIM form factor
- NIM-ES2-8-P: Single-wide NIM form factor
- SM-X-16G4M2X: Single-wide SM form factor
- SM-X-40G8M2X: Double-wide SM form factor

Cisco Catalyst 8300 Series Edge Platforms (see [Interfaces and Modules](#)):

- C-SM-16P4M2X: Single-wide SM form factor
- C-SM-40P8M2X: Double-wide SM form factor



Note Bridging is supported on the IR1800 series of router in SD-WAN mode.

Restrictions for Cisco IOS XE Catalyst SD-WAN Devices

- Configuring MAC aging time per VLAN is not supported. You can only configure global MAC aging time.
- Setting a maximum limit for MAC addresses per VLAN is not supported.
- Configuring a single static MAC address on multiple switch ports is not supported.
- Packet statistics is not supported on VLANs.
- Bridge Domain Interface (BDI) is not supported on the Cisco IOS XE Catalyst SD-WAN Devices. However, starting from Cisco IOS XE Catalyst SD-WAN Release 17.15.1a, L2 support service is supported on the Cisco IOS XE Catalyst SD-WAN Devices.

Configure Bridging Using Cisco SD-WAN Manager

Use the Switch Port template to configure bridging for Cisco Catalyst SD-WAN.

To have a Cisco IOS XE Catalyst SD-WAN device act as a bridge, configure VLANs on the router. A router can have up to 16 VLANs.

Configure Switchports

1. From the Cisco SD-WAN Manager menu, choose **Configuration > Templates**.
2. In **Device Templates**, click **Create Template**.
3. From the Create Template drop-down, choose **From Feature Template**.
4. From the Device Model drop-down, choose the type of device for which you are creating the template.
5. Click **Additional Templates**, or scroll to the Additional Templates section.
6. Click the plus sign (+) next to Switch Port.
7. In the Switch Port drop-down, choose the port number.
8. If the switch port you want to choose does not exist, from the lower Switch Port drop-down, click **Create Template**. The Switch Port template form is displayed. The form contains fields for naming the template, and fields for defining switch port parameters.
9. In the Template Name field, enter a name for the template. The name can be up to 128 characters and can contain only alphanumeric characters.
10. In the Template Description field, enter a description of the template. The description can be up to 2048 characters and can contain only alphanumeric characters.

When you first open a feature template, for each parameter that has a default value, the scope is set to Default (indicated by a check mark), and the default setting or value is shown. To change the default or to enter a value, click the scope drop-down next to the parameter field and choose one of the following:

Table 1:

Parameter Scope	Scope Description
Device Specific (indicated by a host icon)	<p>Use a device-specific value for the parameter. For device-specific parameters, you cannot enter a value in the feature template. You enter the value when you attach a Viptela device to a device template .</p> <p>When you click Device Specific, the Enter Key box opens. This box displays a key, which is a unique string that identifies the parameter in a CSV file that you create. This file is an Excel spreadsheet that contains one column for each key. The header row contains the key names (one key per column), and each row after that corresponds to a device and defines the values of the keys for that device. You upload the CSV file when you attach a Cisco Catalyst SD-WAN device to a device template.</p> <p>To change the default key, type a new string and move the cursor out of the Enter Key box.</p> <p>Examples of device-specific parameters are system IP address, hostname, GPS location, and site ID.</p>
Global (indicated by a globe icon)	<p>Enter a value for the parameter, and apply that value to all devices.</p> <p>Examples of parameters that you might apply globally to a group of devices are DNS server, syslog server, and interface MTUs.</p>

Configure Basic Switch Port Parameters

To configure basic switch port parameters, choose Basic Configuration and configure the following parameters:

Table 2:

Parameter Name	Description
Slot	Enter the number of the slot in which the Layer 2 switch port module is installed.
Sub-Slot	Enter the number of the sub-slot.
Module	Choose the switch port module type. You can choose from 4, 8, or 22 ports.

To save the feature template, click **Save**.

Associate Interfaces with the Switch Port

To associate an interface with the switch port, click Interface and click **Add New Interface**.

The Wlan-GigabitEthernet0/1/8 interface applies only to C1111-8PW and C1111-8PLTExxW routers. When you configure this interface, choose either **C1111-8PW** or **C1111-8PLTExxW** when you create a switch port, and choose **8 port** from the Module drop-down list. In addition, from the New Interface drop-down menu, make sure to choose **Wlan-GigabitEthernet0/1/8**.

Table 3:

Parameter Name	Description
Interface Name	Enter the name of the interface to associate with the bridging domain, in the format Gi slot/sub-slot/port .
Shutdown	Click No to enable the interface. By default, an interface is disabled.
Switch Port	Choose the switch port mode: <ul style="list-style-type: none"> • Access—Configure the interface as an access port. You can configure only one VLAN on an access port, and the port can carry traffic for only one VLAN. <ul style="list-style-type: none"> • VLAN Name—Enter a description for the VLAN. • VLAN ID—Enter the VLAN number, which can be a value from 1 through 4094. • Trunk—Configure the interface as a trunk port. You can configure a range of VLANs on a trunk port, and the port can carry traffic for multiple VLANs. This range should include the VLAN from SVI. Alternatively, you can assign one of the switchport interfaces to access mode. This ensures that the VLAN is added to the VLAN database. <ul style="list-style-type: none"> • Allowed VLANs—Enter the range of the VLANs for which the trunk can carry traffic for the VLAN. • Native VLAN ID—Enter the number of the VLAN allowed to carry untagged traffic.

Click **Save**.

To use the switch port for routing, associate it with an SVI.

Configure Other Interface Properties

To configure other interface properties, choose **Advanced** and configure the following properties:



Note For Cisco IOS XE Catalyst SD-WAN devices, you cannot configure MAC age-out time and static MAC address per interface. You can only configure them globally.

Table 4:

Parameter Name	Description
Age-Out Time	Enter how long an entry is in the MAC table before it ages out. Set the value to 0 to prevent entries from timing out. <i>Range:</i> 0, 10 through 1000000 seconds <i>Default:</i> 300 seconds
Static MAC Address	Click Add Static MAC Address to map a MAC address to a switch port. In the MAC Static Address field that appears, enter the following: <ul style="list-style-type: none"> • MAC Address—Enter the static MAC address to map to the switch port interface. • Switch Port Interface Name—Enter the name of the switch port interface. • VLAN ID—Enter the number of the VLAN for the switch port. Click Add to save the static MAC address mapping.

Click **Save**.

Configure VPN Interface SVI using Cisco SD-WAN Manager

Use the VPN Interface SVI template to configure SVI for Cisco IOS XE Catalyst SD-WAN devices. You configure a switch virtual interface (SVI) to configure a VLAN interface.

To configure DSL interfaces on Cisco routers using Cisco SD-WAN Manager templates, create a VPN Interface SVI feature template to configure VLAN interface parameters.

Create VPN Interface SVI Template

1. From the Cisco SD-WAN Manager menu, choose **Configuration > Templates**.
2. In **Device Templates**, click **Create Template**.



Note In Cisco vManage Release 20.7.x and earlier releases, **Device Templates** is titled **Device**.

3. From the **Create Template** drop-down, choose **From Feature Template**.

4. From the **Device Model** drop-down, choose the type of device for which you are creating the template.
5. If you are configuring the SVI in the transport VPN (VPN 0):
 - a. Click **Transport & Management VPN**, or scroll to the Transport & Management VPN section.
 - b. Under Additional VPN 0 Templates, click **VPN Interface SVI**.
6. If you are configuring the SVI in a service VPN (VPNs other than VPN 0):
 - a. Click **Service VPN**, or scroll to the Service VPN section.
 - b. In the **Service VPN** drop-down list, enter the number of the service VPN.
 - c. Under **Additional VPN Templates**, click **VPN Interface SVI**.
7. From the **VPN Interface SVI** drop-down, click **Create Template**. The VPN Interface SVI template form is displayed.
The form contains fields for naming the template, and fields for defining VLAN Interface parameters.
8. In **Template Name**, enter a name for the template. The name can be up to 128 characters and can contain only alphanumeric characters.
9. In **Template Description**, enter a description of the template. The description can be up to 2048 characters and can contain only alphanumeric characters.

When you open a feature template initially, for each parameter that has a default value, the scope is set to Default (indicated by a check mark), and the default setting or value is shown. To change the default or to enter a value, click the **scope** drop-down next to the parameter field.



Note To get the SVI interface up and functional, ensure that the appropriate VLAN is explicitly configured on the Switch Port Access or Trunk interface.

Configure Basic Interface Functionality

Table 5: Feature History

Feature Name	Release Information	Description
Support for Configuring Secondary IP Address	Cisco IOS XE Catalyst SD-WAN Release 17.2.1r	You can configure up to four secondary IPv4 or IPv6 addresses, and up to four DHCP helpers. Secondary IP addresses can be useful for forcing unequal load sharing between different interfaces, for increasing the number of IP addresses in a LAN when no more IPs are available from the subnet, and for resolving issues with discontinuous subnets and classful routing protocol.

To configure basic VLAN interface functionality in a VPN, choose **Basic Configuration** and configure the following parameters. Parameters marked with an asterisk are required to configure an interface.

Table 6:

Parameter Name	Description
Shutdown*	Click No to enable the VLAN interface.
VLAN Interface Name*	Enter the VLAN identifier of the interface. <i>Range:</i> 1 through 1094.
Description	Enter a description for the interface.
IP MTU	Specify the maximum MTU size of packets on the interface. <i>Range:</i> 576 through 1500. <i>Default:</i> 2000 bytes
IPv4* or IPv6	Click to configure one or more IPv4 or IPv6 addresses for the interface. (Beginning with Cisco IOS XE SD-WAN Release 17.2.)
IPv4 Address*	Enter the IPv4 address for the interface.
IPv6 Address	
Secondary IP Address	Click Add to enter up to four secondary IP addresses. (Beginning with Cisco IOS XE SD-WAN Release 17.2.)
DHCP Helper*	Enter up to eight IP addresses for DHCP servers in the network to have the interface be a DHCP helper. Separate each address with a comma. A DHCP helper interface forwards BOOTP (Broadcast) DHCP requests that it receives from the specified DHCP servers. Click Add to configure up to four DHCP helpers. (Beginning with Cisco IOS XE SD-WAN Release 17.2, for IPv6.)

To save the feature template, click **Save**.

Apply Access Lists

To apply a rewrite rule, access lists, and policers to a router interface, choose **ACL** and configure the following parameters:

Table 7:

Parameter Name	Description
Ingress ACL – IPv4	Click On and specify the name of the access list to apply to IPv4 packets being received on the interface.
Egress ACL – IPv4	Click On and specify the name of the access list to apply to IPv4 packets being transmitted on the interface.
Ingress Policer	Click On and specify the name of the policer to apply to packets being received on the interface.

Parameter Name	Description
Egress Policer	Click On and specify the name of the policer to apply to packets being transmitted on the interface.

To save the feature template, click **Save**.

Configure VRRP

To have an interface run the Virtual Router Redundancy Protocol (VRRP), which allows multiple routers to share a common virtual IP address for default gateway redundancy, choose **VRRP**. Then click **Add New VRRP** and configure the following parameters:

Table 8:

Parameter Name	Description
Group ID	Enter the virtual router ID, which is a numeric identifier of the virtual router. You can configure a maximum of 24 groups. <i>Range:</i> 1 through 255
Priority	Enter the priority level of the router. The router with the highest priority is elected as the primary router. If two Cisco IOS XE Catalyst SD-WAN devices have the same priority, the one with the higher IP address is elected as the primary one. <i>Range:</i> 1 through 254 <i>Default:</i> 100
Timer	Specify how often the primary VRRP router sends VRRP advertisement messages. If the subordinate routers miss three consecutive VRRP advertisements, they elect a new primary router. <i>Range:</i> 1 through 3600 seconds <i>Default:</i> 1 second
Track OMP Track Prefix List	By default, VRRP uses the state of the service (LAN) interface on which it is running to determine which Cisco IOS XE Catalyst SD-WAN device is the primary virtual router. If a Cisco IOS XE Catalyst SD-WAN device loses all its WAN control connections, the LAN interface still indicates that it is up even though the router is functionally unable to participate in VRRP. To take WAN side connectivity into account for VRRP, configure one of the following: Track OMP—Click On for VRRP to track the Overlay Management Protocol (OMP) session running on the WAN connection. If the primary VRRP router loses all its OMP sessions, VRRP elects a new default gateway from those that have at least one active OMP session. Track Prefix List—Track both the OMP session and a list of remote prefixes, which is defined in a prefix list configured on the local router. If the primary VRRP router loses all its OMP sessions, VRRP failover occurs as described for the Track OMP option. In addition, if reachability to all of the prefixes in the list is lost, VRRP failover occurs immediately, without waiting for the OMP hold timer to expire, thus minimizing the amount of overlay traffic is dropped while the Cisco IOS XE Catalyst SD-WAN device determines the primary VRRP router.
IP Address	Enter the IP address of the virtual router. This address must be different from the configured interface IP addresses of both the local Cisco IOS XE Catalyst SD-WAN device and the peer running VRRP.

Add ARP Table Entries

To configure static Address Resolution Protocol (ARP) table entries on the interface, choose **ARP**. Then click **Add New ARP** and configure the following parameters:

Table 9:

Parameter Name	Description
IP Address	Enter the IP address for the ARP entry in dotted decimal notation or as a fully qualified host name.
MAC Address	Enter the MAC address in colon-separated hexadecimal notation.

To save the ARP configuration, click **Add**.

To save the feature template, click **Save**.

Configure Other Interface Properties

To configure other interface properties, choose **Advanced** and configure the following properties:

Table 10:

Parameter Name	Description
TCP MSS	Specify the maximum segment size (MSS) of TCP SYN packets passing through the Cisco IOS XE Catalyst SD-WAN device. By default, the MSS is dynamically adjusted based on the interface or tunnel MTU such that TCP SYN packets are never fragmented. <i>Range:</i> 552 to 1460 bytes <i>Default:</i> None
ARP Timeout	Specify how long it takes for a dynamically learned ARP entry to time out. <i>Range:</i> 0 through 2678400 seconds (744 hours) <i>Default:</i> 1200 (20 minutes)

To save the feature template, click **Save**.

Configure Bridging Using CLI for Cisco IOS XE Catalyst SD-WAN Devices

To configure bridging on Cisco IOS XE Catalyst SD-WAN devices, you must create VLANs to enable L2 switching, and SVIs to enable routing traffic between various VLANs. Follow these steps to configure Bridging on Cisco IOS XE Catalyst SD-WAN devices.

Configure VLANs

VLANs enable L2 switching by creating separate broadcast domains.

1. Create a VLAN.

```
vlan 10
name atm
commit
```

2. Configure a trunk interface. A trunk interface allows a switch port to carry traffic from multiple VLANs.

```
interface GigabitEthernet0/2/0
switchport mode trunk
switchport trunk allowed vlan10-20
commit
```

3. Configure native VLAN for trunk interface.

```
interface GigabitEthernet0/2/0
switchport trunk native vlan100
commit
```

4. Configure access interface.

```
interface GigabitEthernet0/2/0
switchport mode access
switchport access vlan20
commit
```

5. [Optional] Modify MAC aging time.

```
mac address-table aging-time60
commit
```

Note: Cisco IOS XE Catalyst SD-WAN devices do not support modifying MAC aging-time for individual VLANs. Only global configuration on MAC aging-time is supported.

6. [Optional] Configure static MAC address.

```
mac address-table static0001.1111.1111
vlan 100 interface GigabitEthernet0/1/0
commit
```

Configuration Example

The following example shows how to attach an access mode switchport to a VLAN name.

```
config-transaction
vlan 10
name test
commit
exit
!
interface GigabitEthernet0/1/2
switchport mode access
switchport access vlan name test
commit
```

Configure SVI

After you create VLANs to enable L2 switching between hosts, you must configure Switch Virtual Interfaces (SVI) to be able to route traffic between various VLANs.

Create an SVI interface to associate it with the VLAN you created in the Create VLAN topic.

```
interface vlan10
ip address 192.0.2.1 255.255.255.0
commit
```

Run the **show ip interface brief** command to verify the creation of SVI.

```
Device# show ip interface brief
Interface                IP-Address      OK? Method Status      Protocol
GigabitEthernet0/1/1    unassigned      YES NVRAM  up          up
GigabitEthernet0/2/0    unassigned      YES unset  up          up
GigabitEthernet0/2/1    unassigned      YES unset  up          up
GigabitEthernet0        10.10.10.1      YES other  up          up
Vlan1                    unassigned      YES unset  up          up
Vlan10                   192.0.2.1       YES other  up          up
```




CHAPTER 3

Layer 2 and Layer 3 Flex Port Support

Table 11: Feature History

Feature Name	Release Information	Description
Layer 2 and Layer 3 Flex Port Support	Cisco IOS XE Catalyst SD-WAN Release 17.11.1a Cisco vManage Release 20.11.1	Cisco SD-WAN Manager provides flex support on Layer 2 switchports on Cisco IOS XE Catalyst SD-WAN devices, allowing flexibility for LAN ports at Layer 2 to be converted to Layer 3 ports. You can configure the flex ports on Layer 2 as Layer 3 ports using feature profiles and CLI add-on profile.

- [Information About Layer 2 and Layer 3 Flex Port Support, on page 17](#)
- [Prerequisites for Layer 2 and Layer 3 Flex Port Support, on page 18](#)
- [Restrictions For Layer 2 and Layer 3 Flex Port Support, on page 18](#)
- [Use Cases for Layer 2 and Layer 3 Flex Port Support, on page 18](#)
- [Configure Layer 2 and Layer 3 Flex Port Support using Cisco SD-WAN Manager, on page 18](#)
- [Troubleshoot Layer 2 and Layer 3 Flex Port Support, on page 20](#)

Information About Layer 2 and Layer 3 Flex Port Support

With flex ports, you can configure a single switch port to operate as either a Layer 2 or Layer 3 port, depending on your specific requirements. The flex port connects the Cisco Catalyst SD-WAN device to a WAN link or another network device, and the operating mode (Layer 2 or Layer 3) is changed as needed to support different network topologies or connectivity requirements. You can configure flex ports using feature profiles and CLI add-on profile.

You can configure a port as either Layer 2 or Layer 3, depending on the requirements of the network. This provides greater flexibility in configuring the network and allows for a more optimized use of network resources.

**Note**

- The flex ports are set to Layer 2 interface by default for Cisco ISR1100 series routers.
- You can only convert Layer 3 ports back to Layer 2 ports that were previously Layer 2 flex ports.

Prerequisites for Layer 2 and Layer 3 Flex Port Support

A configuration group is mandatory to configure flex support. For more information on configuration groups see, [Use the Configuration Group Workflows](#).

Restrictions For Layer 2 and Layer 3 Flex Port Support

- The last two ports of the front-panel fixed ports are the flex ports.
- Flex Layer 2 and Layer 3 interfaces do not have PoE support because PoE is enabled only on the half lower number interfaces.
- STP is disabled by default for Cisco ISR 1100 Series L2 switch modules.

Use Cases for Layer 2 and Layer 3 Flex Port Support

- The Layer 2 flex port support is helpful in scenarios where there is an existing Layer 2 network and needs to integrate with Cisco Catalyst SD-WAN network. In this case, the Cisco IOS XE Catalyst SD-WAN device can be configured to support Layer 3 connectivity, allowing the existing network to be seamlessly integrated with the Cisco Catalyst SD-WAN overlay network.
- The Layer 3 flex port support is helpful when there are multiple Layer 3 networks that need to be interconnected. With flex support, the Cisco IOS XE Catalyst SD-WAN device can be configured to support Layer 2 connectivity, allowing the different networks to be interconnected and route the traffic.

Configure Layer 2 and Layer 3 Flex Port Support using Cisco SD-WAN Manager

Create a Configuration Group

For more information on creating a configuration group see, [Use the Configuration Group Workflows](#).

Configure Layer 2 Support on Flex Ports

1. From the Cisco SD-WAN Manager menu, choose **Configuration > Templates > Configuration Groups**.
2. Click ... adjacent to the configuration group name and choose **Edit**.

3. Click the **Service Profile** in the **Feature Profiles** pane.
4. Click **Add Feature**.
5. From the feature drop-down list, choose **Switchport**. For more information on switchport see, [Switchport](#).
6. In the **Add Feature** pane, Enter a name for the switchport in the **Name** field.
7. In the **Description** field, enter a description of the feature. The description can contain any characters and spaces.
8. Configure the **Basic Configuration** options as needed.
9. Navigate to the **Interface** tab and click **Add Interface** to add the flex interface. For more information on configuring the interface see, [the table describing the options for configuring the switchport](#).
10. Click **Save**.



Note To change the mode of the flex port interface, remove all existing configurations associated with the flex port. If the flex port is referenced by other configurations, such as **ip ftp source interface GigabitEthernet0/1** ensure you remove these references to prevent conflicts during reconfiguration.

To configure an interface in Layer 3 mode, you must enable **negotiation auto** on the flex port interface. To turn off negotiation, you must configure **negotiation auto**, and then apply **no negotiation auto**.

Deploy the Device

Before You Begin

Ensure that one or more configuration groups are created so that you can choose a group from the list to deploy the associated devices.

Deploy Devices

1. From the Cisco SD-WAN Manager menu, choose **Configuration > Templates > Configuration Groups**.
2. Click the ... icon adjacent to the respective configuration group and choose **Edit**.
3. Click **Associated Devices**.



Note Use the **CLI Preview** option to verify the configuration before deploying. The new configuration is highlighted in green color.

4. Choose one or more devices, and then click **Deploy**.

Configure Layer 3 Support on Flex Ports

1. Delete the flex port configuration from the switchport parcel in the configuration group to undo the layer 2 support configuration on flex ports. For more information on how to delete a feature see, [Delete a Feature](#).

2. Configure the **Service Profile** or **Transport Profile** feature parcels to configure a LAN VPN or VPN 0 as an L3 interface. For more information see, [Configure Service VPN](#).
3. Once the LAN VPN or VPN is configured, click the ... icon in the respective VPN interface and choose **Add Sub Feature**.
4. In the **Add Sub Feature** drop-down list, choose **Ethernet Interface**. For more information see, [Ethernet Interface](#).
5. Configure the **CLI Add-on Profile** feature parcel. You can add the route-target CLIs through the CLI add-on profile. For more information see, [CLI Profile](#). Add **no switchport** under flex port interface to the CLI configuration.

```
no switchport
```



Note Use **no switchport** for Layer 3 mode and **switchport** for Layer 2 mode in the interface configuration.

Deploy Devices

1. From the Cisco SD-WAN Manager menu, choose **Configuration > Templates > Configuration Groups**.
2. Click ... adjacent to the configuration group name and choose **Edit**.
3. Click **Associated Devices**.



Note Use the **CLI Preview** option to verify the configuration before deploying. The new configuration is highlighted in green color.

4. Choose one or more devices, and then click **Deploy**.

Troubleshoot Layer 2 and Layer 3 Flex Port Support

Problem

Configuring Layer 2 flex port support failed.

Solution

Ensure that the flex port support configuration parcel added to the VPN interface (WAN/LAN) is deleted before the flex support is configured on layer 2 port.

Problem

Configuring Layer 3 flex port support failed.

Solution

1. Ensure that the flex port support configuration is deleted from the switchport profile.

2. Ensure that the add-on CLI profile configuration attached to the flex port contains the code line, **no switchport** added to it.

