



## Information About SCADA

---

- [SCADA Overview, on page 1](#)
- [Role of the IR8340, on page 1](#)
- [Key Terms, on page 2](#)
- [Protocol Translation Application, on page 2](#)
- [Prerequisites, on page 3](#)
- [Guidelines and Limitations, on page 4](#)
- [Default Settings, on page 4](#)
- [Configuring Protocol Translation, on page 4](#)
- [Configuring the T101 Protocol Stack, on page 6](#)
- [Configuring the T104 Protocol Stack, on page 8](#)
- [Configuration Example, on page 11](#)
- [Configuring the DNP3 Protocol Stacks, on page 13](#)
- [Starting and Stopping the Protocol Translation Engine, on page 17](#)
- [Verifying Configuration, on page 18](#)
- [Debug Commands, on page 19](#)

## SCADA Overview

SCADA refers to a control and management system employed in industries such as water management, electric power, and manufacturing. A SCADA system collects data from various types of equipment within the system and forwards that information back to a Control Center for analysis. Generally, individuals located at the Control Center monitor the activity on the SCADA system and intervene when necessary.

The Remote Terminal Unit (RTU) acts as the primary control system within a SCADA system. RTUs are configured to control specific functions within the SCADA system, which can be modified as necessary through a user interface.

Change the serial interface mode as async and then configure the interface.

## Role of the IR8340

In the network, the Control Center always serves as the master in the network when communicating with the IR8340. The IR8340 serves as a proxy master station for the Control Center when it communicates with the RTU.

The IR8340 provides protocol translation to serve as a SCADA gateway to do the following:

- Receive data from RTUs and relay configuration commands from the Control Center to RTUs.
- Receive configuration commands from the Control Center and relay RTU data to the Control Center.
- Terminate incoming requests from the Control Center, when an RTU is offline.

The IR8340 performs Protocol Translation for the following protocols:

- IEC 60870 T101 to/from IEC 60870 T104
- DNP3 serial to DNP3 IP

## Key Terms

The following terms are relevant when you configure the T101 and T104 protocol stacks on the IR8340:

- Channel—A channel is configured on each IR8340 serial port interface to provide a connection to a single RTU for each IP connection to a remote Control Center. Each connection transports a single T101 (RTU) or T104 (Control Center) protocol stack.
- Link Address—Refers to the device or station address.
- Link Mode (Balanced and Unbalanced)—Refers to the modes of data transfer.
  - An Unbalanced setting refers to a data transfer initiated from the master.
  - A Balanced setting can refer to either a master or slave initiated data transfer.
- Sector—Refers to a single RTU within a remote site.
- Sessions—Represents a single connection to a remote site.

The following terms are relevant when you configure the DNP3 protocol stacks on the on the IR8340:

- Channel—A channel is configured on the IR8340 serial port interface to provide a connection to a single RTU for each IP connection to a remote Control Center. Each connection transports a single DNP3 serial (RTU) or DNP3 IP (Control Center) protocol stack.
- Link Address—Refers to the device or station address.
- Sessions—Represents a single connection to a remote site.

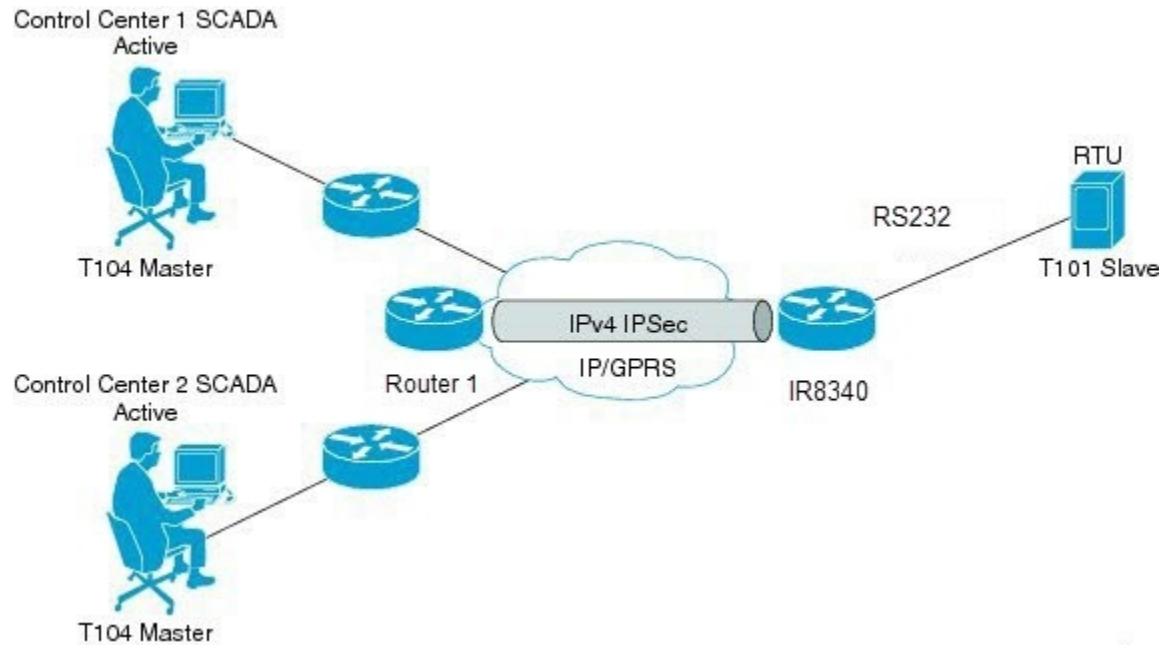
## Protocol Translation Application

In the following figure, IR8340 (installed within a secondary substation of the Utility Network) employs Protocol Translation to provide secure, end-to-end connectivity between Control Centers and RTUs within a SCADA System.

The IR8340 connects to the RTU (slave) through a RS232 connection. To protect the traffic when forwarded over public infrastructures (for example, cellular), the IR8340 forwards SCADA data from the RTU to the Control Center in the SCADA system through an IPSec tunnel (FlexVPN site-to-site or hub and spoke). The IPSec tunnel protects all traffic between the IR8340 and the Head-end aggregation router. SCADA traffic can

be inspected through an IPS device positioned in the path of the SCADA traffic before it is forwarded to the proper Control Center.

**Figure 1: Routers Within a SCADA System**



## Prerequisites

RTUs must be configured and operating in the network.

For each RTU that connects to the IR8340, you will need the following information for T101/T104:

- Channel information
  - Channel name
  - Connection type: serial
  - Link transmission procedure setting: unbalanced or balanced
  - Address field of the link (number expressed in octets)
- Session information
  - Session name
  - Size of common address of Application Service Data Unit (ASDU) (number expressed in octets)
  - Cause of transmission (COT) size (number expressed in octets)
  - Information object address (IOA) size (number expressed in octets)
- Sector information
  - Sector name

- ASDU address, (number expressed in octets)

For each RTU that connects to the IR8340, you will need the following information for DNP3:

- Channel information
  - Channel name
  - Connection type: serial
  - Link address
- Session information
  - Session name

## Guidelines and Limitations

Each channel supports only one session.

Each sessions supports only one sector.

## Default Settings

T101/T104 Parameters	Default
Role for T101	Slave
Role for T104	Master

DNP3 Parameters	Default
Unsolicited Response (DNP3-serial)	Not Enabled
Send Unsolicited Message (DNP3-IP)	Enabled

## Configuring Protocol Translation

Before making any configuration changes to a IR8340 operating with Protocol Translation, please review the section on [Starting and Stopping the Protocol Translation Engine, on page 17](#).

## Enabling the IR8340 Serial Port and SCADA Encapsulation

Before you can enable and configure Protocol Translation on the IR8340, you must first enable the serial port on the IR8340 and enable SCADA encapsulation on that port.

**Before you begin**

Determine availability of serial port on the IR8340.

**Procedure**

	Command or Action	Purpose
<b>Step 1</b>	<b>configure terminal</b>	Enters the global configuration mode.
<b>Step 2</b>	<b>interface serial</b> <i>slot/port/interface</i>	Enters the interface command mode for the serial slot/port/interface.  <i>slot</i> –value of 0 <i>port</i> –value of 2 or 3 <i>interface</i> –value of 0
<b>Step 3</b>	<b>physical-layer async</b>	Configure the serial interface to Asynchronous mode.
<b>Step 4</b>	<b>no shutdown</b>	Brings up the port, administratively.
<b>Step 5</b>	<b>encapsulation scada</b>	Enables encapsulation on the serial port for protocol translation and other SCADA protocols.

**EXAMPLE**

This example shows how to enable serial port 0/2/0 and how to enable encapsulation on that interface to support SCADA protocols.

```
router# configure terminal
router(config)# interface serial 0/2/0
router(config-if)# physical-layer async
router(config-if)# no shutdown
router(config-if)# encapsulation scada
```

**Configuring T101 and T104 Protocol Stacks**

You can configure T101 and T104 protocol stacks, which allow end-to-end communication between Control Centers (T104) and RTUs (T101) within a SCADA system.

- [Configuring the T101 Protocol Stack, on page 6](#)
- [Configuring the T104 Protocol Stack, on page 8](#)
- [Starting and Stopping the Protocol Translation Engine, on page 17](#)

**Prerequisites**

Ensure that you have gathered all the required configuration information.

Enable the serial port and SCADA encapsulation.

# Configuring the T101 Protocol Stack

Configure the channel, session, and sector parameters for the T101 protocol stack.

## Before you begin

Ensure that you have gathered all the required configuration information. (See [Prerequisites](#), on page 3.)

Enable the serial port and SCADA encapsulation. (See [Enabling the IR8340 Serial Port and SCADA Encapsulation](#), on page 4.)

## Procedure

	Command or Action	Purpose
<b>Step 1</b>	<code>configure terminal</code>	Enters global configuration mode.
<b>Step 2</b>	<code>scada-gw protocol t101</code>	Enters the configuration mode for the T101 protocol.
<b>Step 3</b>	<code>channel <i>channel_name</i></code>	<p>Enters the channel configuration mode for the T101 protocol.</p> <p><i>channel_name</i> –Identifies the channel on which the serial port of the IR8340 communicates to the RTU.</p> <p><b>Note</b> When the entered channel name does not already exist, the router creates a new channel.</p> <p>Entering the <b>no</b> form of this command deletes an existing channel. However, all sessions must be deleted before you can delete a channel.</p>
<b>Step 4</b>	<code>role master</code>	Assigns the master role to the T101 protocol channel (default).
<b>Step 5</b>	<code>link-mode {balanced   unbalanced}</code>	<p>Configures the link-mode as either balanced or unbalanced.</p> <p>unbalanced–Refers to a data transfer initiated from the master.</p> <p>balanced–Refers to either a master or slave data transfer.</p>
<b>Step 6</b>	<code>link-addr-size {none   one   two}</code>	Defines the link address size in octets.
<b>Step 7</b>	<code>bind-to-interface serial <i>slot/port/interface</i></code>	<p>Defines the IR8340 serial interface on which the system sends its T101 protocol traffic.</p> <p><i>slot</i> –Value of 0</p> <p><i>port</i> –Value of 2</p>

	Command or Action	Purpose
		<i>interface</i> –Value of 0
<b>Step 8</b>	<b>exit</b>	Ends configuration of the channel and exits the channel configuration mode. Saves all settings.
<b>Step 9</b>	<b>session</b> <i>session_name</i>	Enters the session configuration mode and assigns a name to the session.
<b>Step 10</b>	<b>attach-to-channel</b> <i>channel_name</i>	Attaches the session to the channel. Enter the same channel name that you entered in Step 3 . <i>channel_name</i> –Identifies the channel.
<b>Step 11</b>	<b>common-addr-size</b> { <b>one</b>   <b>two</b>   <b>three</b> }	Defines the common address size in octets.
<b>Step 12</b>	<b>cot size</b> { <b>one</b>   <b>two</b>   <b>three</b> }	Defines the cause of transmission such as spontaneous or cyclic data schemes in octets.
<b>Step 13</b>	<b>info-obj-addr-size</b> { <b>one</b>   <b>two</b>   <b>three</b> }	Defines the information object element address size in octets.
<b>Step 14</b>	<b>link-addr-size</b> { <b>one</b>   <b>two</b>   <b>three</b> }	Defines the link address size in octets.
<b>Step 15</b>	<b>link-addr</b> <i>link_address</i>	Refers to the link address of the RTU. <b>Note</b> The link address entered here must match the value set on the RTU to which the serial port connects. <i>link_address</i> –Range of 0-65535.
<b>Step 16</b>	<b>exit</b>	Exits the session configuration mode.
<b>Step 17</b>	<b>sector</b> <i>sector_name</i>	Enters the sector configuration mode and assigns a name to the sector for the RTU. <i>sector_name</i> –Identifies the sector.
<b>Step 18</b>	<b>attach-to-session</b> <i>session_name</i>	Attaches the RTU sector to the session. Enter the same session name that you entered in Step 9 . <i>session_name</i> - Identifies the session.
<b>Step 19</b>	<b>asdu-addr</b> <i>asdu_address</i>	Refers to the ASDU structure address of the RTU.
<b>Step 20</b>	<b>exit</b>	Exits the sector configuration mode.
<b>Step 21</b>	<b>exit</b>	Exits the protocol configuration mode.

## EXAMPLE

This example shows how to configure the parameters for the T101 protocol stack.

```

router# configure terminal
router(config)# scada-gw protocol t101
router(config-t101)# channel rtu_channel
router(config-t101-channel)# role master
router(config-t101-channel)# link-mode unbalanced
router(config-t101-channel)# link-addr-size one
router(config-t101-channel)# bind-to-interface serial 0/2/0
router(config-t101-channel)# exit
router(config-t101)# session rtu_session
router(config-t101-session)# attach-to-channel rtu_channel
router(config-t101-session)# common-addr-size two
router(config-t101-session)# cot-size one
router(config-t101-session)# info-obj-addr-size two
router(config-t101-session)# link-addr 3
router(config-t101-session)# exit
router(config-t101)# sector rtu_sector
router(config-t101-sector)# attach-to-session rtu_session
router(config-t101-sector)# asdu-addr 3
router(config-t101-sector)# exit
router(config-t101)# exit
router(config)#

```

## Configuring the T104 Protocol Stack

Follow the steps below for each Control Center that you want to connect to over a T104 protocol.

### Before you begin

Ensure that you have gathered all the required configuration information. (See [Prerequisites](#), on page 3.)

Enable the serial port and SCADA encapsulation. (See [Enabling the IR8340 Serial Port and SCADA Encapsulation](#), on page 4.)

### Procedure

	Command or Action	Purpose
<b>Step 1</b>	<b>configure terminal</b>	Enters configuration mode.
<b>Step 2</b>	<b>scada-gw protocol t104</b>	Enters the configuration mode for the T104 protocol.
<b>Step 3</b>	<b>channel <i>channel_name</i></b>	Enters the channel configuration mode for the T104 protocol.  <i>channel_name</i> –Identifies the channel on which the router communicates with the Control Center.  <b>Note</b> When the entered channel name does not already exist, the router creates a new channel.



	Command or Action	Purpose
		Entering the <b>no</b> form of this command deletes an existing channel. However, all sessions must be deleted before you can delete a channel.
<b>Step 4</b>	<b>k-value</b> <i>value</i>	Sets the maximum number of outstanding Application Protocol Data Units (APDUs) for the channel.  <b>Note</b> An APDU incorporates the ASDU and a control header.  <i>value</i> –Range of values from 1 to 32767. Default value is 12 APDUs.
<b>Step 5</b>	<b>w-value</b> <i>value</i>	Sets the maximum number of APDUs for the channel.  <i>value</i> –Range of values from 1 to 32767. Default value is 8 APDUs.
<b>Step 6</b>	<b>t0-timeout</b> <i>value</i>	Defines the t0-timeout value for connection establishment of the T104 channel.
<b>Step 7</b>	<b>t1-timeout</b> <i>value</i>	Defines the t1-timeout value for send or test APDUs on the T104 channel.
<b>Step 8</b>	<b>t2-timeout</b> <i>value</i>	Defines the t2-timeout value for acknowledgements when the router receives no data message.  <b>Note</b> The t2 value must always be set to a lower value than the t1 value on the T104 channel.
<b>Step 9</b>	<b>t3-timeout</b> <i>value</i>	Defines the t3-timeout value for sending s-frames in case of a long idle state on the T104 channel.  <b>Note</b> The t3 value must always be set to a higher value than the t1 value on the T104 channel.
<b>Step 10</b>	<b>tcp-connection</b> {0 1} <b>local-port</b> { <i>port_number</i>   <b>default</b> } <b>remote-ip</b> { <i>A.B.C.D</i>   <i>A.B.C.D/LEN</i>   <b>any</b> } [ <b>vrf</b> <i>WORD</i> ]	In a configuration where there are redundant Control Centers, sets the connection value for the secondary Control Center as defined on the primary Control Center.  <i>port-number</i> –value between 2000 and 65535. <i>default</i> –value of 2404. <i>A.B.C.D</i> –single host. <i>A.B.C.D/m</i> –subnet A.B.C.D/LEN.

## EXAMPLE

	Command or Action	Purpose
		any-any remote hosts 0.0.0.0/0. WORD-VRF name.
<b>Step 11</b>	<b>exit</b>	Exits the channel configuration mode.
<b>Step 12</b>	<b>session</b> <i>session_name</i>	Enters the session configuration mode and assigns a name to the session.  <i>session_name</i> –Use the same name that you assigned to the channel in Step 3.
<b>Step 13</b>	<b>attach-to-channel</b> <i>channel_name</i>	Defines the name of the channel that transports the session traffic.
<b>Step 14</b>	<b>cot size</b> { <b>one</b>   <b>two</b>   <b>three</b> }	Defines the cause of transmission (cot), such as spontaneous or cyclic data schemes in octets.
<b>Step 15</b>	<b>exit</b>	Exits the session configuration mode.
<b>Step 16</b>	<b>sector</b> <i>sector_name</i>	Enters the sector configuration mode and assigns a name to the sector for the Control Center.
<b>Step 17</b>	<b>attach-to-session</b> <i>session_name</i>	Attaches the Control Center sector to the channel.  <i>session_name</i> –Use the same name that you assigned to the channel in Step 3.
<b>Step 18</b>	<b>asdu-addr</b> <i>asdu_address</i>	Refers to the ASDU structure address. Value entered here must match the ASDU value on the RTU.  <i>asdu_address</i> – <i>asdu_address</i> –Value of 1 or 2.
<b>Step 19</b>	<b>map-to-sector</b> <i>sector_name</i>	Maps the Control Center (T104) sector to the RTU (T101) sector.
<b>Step 20</b>	Return to Step 1.	Repeat all steps in this section for each Control Center active in the network.

## EXAMPLE

This example shows how to configure the parameters for the T104 protocol stack on *Control Center 1* and *Control Center 2*, both of which are configured as *masters*, and how to map the T104 sector to the T101 sector.

To configure Control Center 1 (*cc\_master1*), enter the following commands.

```
router# configure terminal
```

```

router(config)# scada-gw protocol t104
router(config-t104)# channel cc_master1
router(config-t104-channel)# k-value 12
router(config-t104-channel)# w-value 8
router(config-t104-channel)# t0-timeout 30
router(config-t104-channel)# t1-timeout 15
router(config-t104-channel)# t2-timeout 10
router(config-t104-channel)# t3-timeout 30
router(config-t104-channel)# tcp-connection 0 local-port 2050 remote-ip 209.165.200.225
router(config-t104-channel)# tcp-connection 1 local-port 2051 remote-ip 209.165.201.25
router(config-t104-channel)# exit
router(config-t104)# session cc_master1
router(config-t104-session)# attach-to-channel cc_master1
router(config-t104-session)# cot-size two
router(config-t104-session)# exit
router(config-t104)# sector cc_master1-sector
router(config-t104-sector)# attach-to-session cc_master1
router(config-t104-sector)# asdu-adr 3
router(config-t104-sector)# map-to-sector rtu_sector
router(config-t104)# exit
router(config)#

```

To configure Control Center 2 (*cc\_master2*), enter the following commands.

```

router(config)# scada-gw protocol t104
router(config-t104)# channel cc_master2
router(config-t104-channel)# k-value 12
router(config-t104-channel)# w-value 8
router(config-t104-channel)# t0-timeout 30
router(config-t104-channel)# t1-timeout 15
router(config-t104-channel)# t2-timeout 10
router(config-t104-channel)# t3-timeout 30
router(config-t104-channel)# tcp-connection 0 local-port 2060 remote-ip 209.165.201.237
router(config-t104-channel)# tcp-connection 1 local-port 2061 remote-ip 209.165.200.27
router(config-t104-channel)# exit
router(config-t104)# session
cc_master2
router(config-t104-session)# attach-to-channel cc_master2
router(config-t104-session)# cot-size two
router(config-t104-session)# exit
router(config-t104)# sector cc_master2-sector
router(config-t104-sector)# attach-to-session cc_master2
router(config-t104-sector)# asdu-adr 3
router(config-t104-sector)# map-to-sector rtu_sector
router(config-t104-sector)# exit
router(config-t104)# exit
router(config)#

```

## Configuration Example

The following example shows how to configure the serial port interface for T101 connection, configure T101 and T104 protocol stacks, and starts the Protocol Translation Engine on the IR8340.

```

router# configure terminal
router(config)# interface serial 0/2/0
router (config-if)# no shutdown
router (config-if)# encapsulation scada
router (config-if)# exit

```

```

router(config)# scada-gw protocol t101
router(config-t101)# channel rtu_channel
router(config-t101-channel)# role master
router(config-t101-channel)# link-mode unbalanced
router(config-t101-channel)# link-addr-size one
router(config-t101-channel)# bind-to-interface serial 0/2/0
router(config-t101-channel)# exit
router(config-t101)# session rtu_session
router(config-t101-session)# attach-to-channel rtu_channel
router(config-t101-session)# common-addr-size two
router(config-t101-session)# cot-size one
router(config-t101-session)# info-obj-addr-size two
router(config-t101-session)# link-addr 3
router(config-t101-session)# exit
router(config-t101)# sector rtu_sector
router(config-t101-sector)# attach-to-session rtu_session
router(config-t101-sector)# asdu-addr 3
router(config-t101-sector)# exit
router(config-t101)# exit
router(config)# scada-gw protocol t104
router(config-t104)# channel cc_master1
router(config-t104-channel)# k-value 12
router(config-t104-channel)# w-value 8
router(config-t104-channel)# t0-timeout 30
router(config-t104-channel)# t1-timeout 15
router(config-t104-channel)# t2-timeout 10
router(config-t104-channel)# t3-timeout 30
router(config-t104-channel)# tcp-connection 0 local-port 2050 remote-ip any
router(config-t104-channel)# tcp-connection 1 local-port 2051 remote-ip any
router(config-t104-channel)# exit
router(config-t104)# session cc_master1
router(config-t104-session)# attach-to-channel cc_master1
router(config-t104-session)# cot-size two
router(config-t104-session)# exit
router(config-t104)# sector cc_master1-sector
router(config-t104-sector)# attach-to-session cc_master1
router(config-t104-sector)# asdu-adr 3
router(config-t104-sector)# map-to-sector rtu_sector
router(config-t104)# exit

router(config-t104)# session cc_master2
router(config-t104-session)# attach-to-channel cc_master2
router(config-t104-session)# cot-size two
router(config-t104-session)# exit
router(config-t104)# sector cc_master2-sector
router(config-t104-sector)# attach-to-session cc_master2
router(config-t104-sector)# asdu-adr 3
router(config-t104-sector)# map-to-sector rtu_sector
router(config-t104-sector)# exit
router(config-t104)# exit
router(config)# scada-gw enable

```

This example configures end-to-end communication between Control Centers and RTUs within a SCADA system using the DNP3 protocol stacks and starts the Protocol Translation Engine on the IR8340:

```

router# configure terminal
router(config)# interface serial 0/2/0
router (config-if)# no shutdown
router (config-if)# encapsulation scada
router (config-if)# exit
router(config)# scada-gw protocol dnp3-serial
router(config-dnp3s)# channel rtu_channel

```

```

router(config-dnp3s-channel)# bind-to-interface serial 0/2/0
router(config-dnp3s-channel)# link-addr source 3
router(config-dnp3s-channel)# unsolicited-response enable
router(config-dnp3s-channel)# exit
router(config-dnp3s)# session rtu_session
router(config-dnp3s-session)# attach-to-channel rtu_channel
router(config-dnp3s-session)# link-addr dest 3
router(config-dnp3s-session)# exit
router(config-dnp3s)# exit
router(config)# scada-gw protocol dnp3-ip
router(config-dnp3n)# channel cc_channel
router(config-dnp3n-channel)# link-addr dest 3
router(config-dnp3n-channel)# tcp-connection local-port default remote-ip any
router(config-dnp3n-channel)# exit
router(config-dnp3n)# session cc_session
router(config-dnp3n-session)# attach-to-channel cc_channel
router(config-dnp3n-session)# link-addr source 3
router(config-dnp3n-session)# map-to-session rtu_session
router(config-dnp3n)# exit
router(config)# exit
router(config)# scada-gw enable

```




---

**Note** IOA addresses obtained from T101 side are sent to T104 side without any modification by the SCADA Gateway

---

## Configuring the DNP3 Protocol Stacks

You can configure the DNP3 serial and DNP3 IP protocol stacks, which allow end-to-end communication between Control Centers and RTUs within a SCADA system.

### Configuring DNP3 Serial

Configure the channel and session parameters for the DNP serial communication with an RTU.

#### Procedure

	Command or Action	Purpose
<b>Step 1</b>	<code>configure terminal</code>	Enters global configuration mode.
<b>Step 2</b>	<code>scada-gw protocol dnp3-serial</code>	Enters configuration mode for the DNP3 serial protocol.
<b>Step 3</b>	<code>channel channel_name</code>	Enters channel configuration mode for the DNP3 serial protocol.  <i>channel_name</i> –Identifies the channel on which the router serial port communicates to the RTU.

## EXAMPLE

	Command or Action	Purpose
		Note: When the entered channel name does not already exist, the router creates a new channel  Entering the <b>no</b> form of this command deletes an existing channel. However, all sessions must be deleted before you can delete a channel.
<b>Step 4</b>	<b>bind-to-interface serial 0/2/0</b>	Defines the router async interface on which the system sends its DNP3 protocol traffic.
<b>Step 5</b>	<b>link-addr source</b> <i>source_address</i>	Refers to the link address of the master.  <i>source_address</i> –Range of values from 1 to 65535.
<b>Step 6</b>	<b>unsolicited-response enable</b>	(Optional) Allows unsolicited responses.  Entering the <b>no</b> form of this command disables unsolicited responses.  The default is disabled.
<b>Step 7</b>	<b>exit</b>	Ends configuration of the channel and exits channel configuration mode. Saves all settings.
<b>Step 8</b>	<b>session</b> <i>session_name</i>	Enters session configuration mode and assigns a name to the session.  Note: When the entered session name does not already exist, the router creates a new session.  Entering the <b>no</b> form of this command deletes an existing session.
<b>Step 9</b>	<b>attach-to-channel</b> <i>channel_name</i>	Attaches the session to the channel.  Note: Enter the same channel name that you entered in Step 3 above  <i>channel_name</i> –Identifies the channel.
<b>Step 10</b>	<b>link-addr dest</b> <i>destination_address</i>	Refers to the link address of the slave.  <i>destination_address</i> –Range of values from 1 to 65535.
<b>Step 11</b>	<b>exit</b>	Exits session configuration mode.
<b>Step 12</b>	<b>exit</b>	Exits protocol configuration mode.

## EXAMPLE

This example shows how to configure the parameters for the DPN3-serial protocol stack:

```

router# configure terminal
router(config)# scada-gw protocol dnp3-serial
router(config-dnp3s)# channel rtu_channel
router(config-dnp3s-channel)# bind-to-interface serial 0/2/0
router(config-dnp3s-channel)# link-addr source 3
router(config-dnp3s-channel)# unsolicited-response enable
router(config-dnp3s-channel)# exit
router(config-dnp3s)# session rtu_session
router(config-dnp3s-session)# attach-to-channel rtu_channel
router(config-dnp3s-session)# link-addr dest 3
router(config-dnp3s-session)# exit
router(config-dnp3s)# exit
router(config)#

```

## Configuring DNP3 IP

Follow the steps below for the Control Center that you want to connect to over DNP3 IP. For redundancy, you can create multiple connections that share the same session configuration under the same session.

### Procedure

	Command or Action	Purpose
<b>Step 1</b>	<b>configure terminal</b>	Enters configuration mode.
<b>Step 2</b>	<b>scada-gw protocol dnp3-ip</b>	Enters configuration mode for the DNP-IP protocol.
<b>Step 3</b>	<b>channel <i>channel_name</i></b>	Enters channel configuration mode for the DNP-IP protocol.  <i>channel_name</i> –Identifies the channel on which the router communicates with the Control Center.  Note: When the entered channel name does not already exist, the router creates a new channel.  Entering the <b>no</b> form of this command deletes an existing channel. However, all sessions must be deleted before you can delete a channel.
<b>Step 4</b>	<b>link-addr dest <i>destination_address</i></b>	Refers to the link address of the master.  <i>destination_address</i> –Range of values from 1 to 65535.
<b>Step 5</b>	<b>send-unsolicited-msg enable</b>	(Optional) Allow unsolicited messages.  The default is enabled.
<b>Step 6</b>	<b>tcp-connection local-port [default   <i>local_port</i> ] remote-ip [any   <i>remote_ip</i>   <i>remote_subnet</i> ]</b>	Configures the local port number and remote IP address for the TCP connection:  • <b>default</b> –20000.

## EXAMPLE

	Command or Action	Purpose
		<ul style="list-style-type: none"> <li>• <i>local_port</i> –Range of values from 2000 to 65535.</li> <li>• <i>any</i>–Any remote hosts 0.0.0.0/0</li> <li>• <i>remote_ip</i> –Single host: A.B.C.D</li> <li>• <i>remote_subnet</i> –Subnet: A.B.C.D/LEN</li> </ul> <p>If <i>remote_subnet</i> is specified, when two channels have the same local ports, the remote subnets cannot overlap each other.</p> <p>Note: Every &lt;local-port, remote-ip&gt; must be unique per channel. If <i>remote_subnet</i> is specified, when two channels have the same local ports, the remote subnets cannot overlap each other.</p>
<b>Step 7</b>	<b>exit</b>	Exits channel configuration mode.
<b>Step 8</b>	<b>session</b> <i>session_name</i>	<p>Enters session configuration mode and assigns a name to the session.</p> <p>Note: When the entered session name does not already exist, the router creates a new session.</p> <p>Entering the <b>no</b> form of this command deletes an existing session.</p>
<b>Step 9</b>	<b>attach-to-channel</b> <i>channel_name</i>	<p>Attaches the session to the channel.</p> <p>Enter the same channel name that you entered in Step 3.</p> <p><i>channel_name</i> –Identifies the channel.</p>
<b>Step 10</b>	<b>link-addr source</b> <i>source_address</i>	<p>Refers to the link address of the slave.</p> <p><i>source_address</i> –Value of 1-65535.</p>
<b>Step 11</b>	<b>map-to-session</b> <i>session_name</i>	<p>Maps the dnp3-ip session to an existing dnp3-serial session.</p> <p>Note: One dnp3-ip session can be mapped to only one dnp3-serial session.</p>
<b>Step 12</b>	<b>exit</b>	Exits session configuration mode.
<b>Step 13</b>	<b>exit</b>	Exits protocol configuration mode.

## EXAMPLE

This example shows how to configure the DNP3 IP parameters:



```

router# configure terminal
router(config)# scada-gw protocol dnp3-ip
router(config-dnp3n)# channel cc_channel
router(config-dnp3n-channel)# link-addr dest 3
router(config-dnp3n-channel)# tcp-connection local-port default remote-ip any
router(config-dnp3n-channel)# exit
router(config-dnp3n)# session cc_session
router(config-dnp3n-session)# attach-to-channel cc_channel
router(config-dnp3n-session)# link-addr source 4
router(config-dnp3n-session)# map-to-session rtu_session
router(config-dnp3n)# exit
router(config)# exit

```

## Starting and Stopping the Protocol Translation Engine

You must start the Protocol Translation Engine to use Protocol Translation on the IR8340.

**Starting**—After enabling SCADA encapsulation on the IR8340 serial port and configuring the T101 and T104 protocols on the IR8340, you can start the Protocol Translation Engine.

**Stopping**—Before you can make any configuration changes to Protocol Translation on the IR8340 with an active Protocol Translation Engine, you must stop the engine.

### Before you begin

Before **starting** the Protocol Translation Engine on the router for the **first time**, make sure you complete the following items:

[Enabling the IR8340 Serial Port and SCADA Encapsulation, on page 4](#)

[Configuring T101 and T104 Protocol Stacks, on page 5](#)

### Procedure

	Command or Action	Purpose
<b>Step 1</b>	<code>configure terminal</code>	Enters global configuration mode.
<b>Step 2</b>	<code>[no] scada-gw enable</code>	Starts ( <b>scada-gw enable</b> ) or stops ( <b>no scada-gw enable</b> ) the Protocol Translation Engine on the IR8340.

## EXAMPLE

To start the protocol translation engine on the router, enter the following commands:

```

router# configure terminal
router(config)# scada-gw enable

```

To stop the protocol translation engine on the router, enter the following commands:

```

router# configure terminal
router(config)# no
scada-gw enable

```

## Verifying Configuration

Command	Purpose
<b>show running-config</b>	Shows the configuration of the router including active features and their settings.
<b>show scada database</b>	Displays details on the SCADA database.
<b>show scada statistics</b>	Shows statistics for the SCADA gateway, including the number of messages sent and received, timeouts, and errors.
<b>show scada tcp</b>	Displays TCP connections associated with the SCADA gateway.

This example shows the output from the `show scada tcp` and `show scada statistics` commands:

```
Router#show scada tcp
DNP3 network channel [test]: 4 max simultaneous connections
conn: local-ip: 3.3.3.21 local-port 20000 remote-ip 3.3.3.15 data-socket
1
Total:
1 current client connections
0 total closed connections

Router#show scada statistics
DNP3 network Channel [test]:
5 messages sent, 2 messages received
0 timeouts, 0 aborts, 0 rejections
2 protocol errors, 2 link errors, 0 address errors
DNP3 serial Channel [test]:
152 messages sent, 152 messages received
1 timeouts, 0 aborts, 0 rejections
0 protocol errors, 0 link errors, 0 address errors

Router#show scada database
----- Scada Gateway Database -----
Configuration Root
State -- 0x3
MaxEvents -- 0x258
Retry -- 0x3
DegradedFrequency -- 0x2710
Timeout -- 0x2710
PointsAvailableToAlloc -- 0x470
From Master
  IEC 104
    Line(2) status:DOWN
    Link(2) status:DOWN InUse(0)
    Request(-99):NOT running
    function(1)id(1)Triggered(0)MustRun(0)Attempt(4)diff(3604)Freq(100)
    RTU(101) status:DOWN InUse(0) Online(0)
    Object(Single Input)
      DI(100)
        Value -- 0x0
        Quality -- 0x4
      DI(101)
        Value -- 0x0
        Quality -- 0x4
      DI(102)
        Value -- 0x0
        Quality -- 0x4
```

# Debug Commands

This section lists some debug commands that are helpful when troubleshooting.

- SCADA device to trace debug commands:

```
#debug scada device ?
network    Network device to trace
none      No device to trace
serial    Serial device to trace

#debug scada device network ?
<0-65535>  Address of device to trace

#debug scada device none ?
<cr> <cr>

#debug scada device serial ?
<0-65535>  Address of device to trace
```

- SCADA function level debug commands:

```
#debug scada function ?
analog      analog ouput trace
clock      clock trace
config     config trace
control    control trace
datalink   datalink trace
driver-event Driver event debug
driver-packet Driver Packet debug
error      error trace
event      event trace
file       file trace
freeze     freeze trace
general    general debug
physical   physical trace
poll       poll trace
protocol   protocol trace
request    request trace
stack      stack trace
status     status trace
tcp-event  TCP event debug
timer      timer trace
transport  transport trace
umode     umode trace
```

