



Flexible NetFlow—MPLS Egress NetFlow

The Flexible NetFlow--MPLS Egress NetFlow feature allows you to capture IP flow information for packets undergoing MPLS label disposition; that is, packets that arrive on a router as MPLS packets and are transmitted as IP packets.

- [Information About Flexible NetFlow MPLS Egress NetFlow](#) , on page 1
- [How to Configure Flexible NetFlow MPLS Egress NetFlow](#) , on page 2
- [Configuration Examples for Flexible NetFlow MPLS Egress NetFlow](#) , on page 9
- [Additional References](#), on page 10
- [Feature Information for Flexible NetFlow - MPLS Egress NetFlow](#) , on page 10

Information About Flexible NetFlow MPLS Egress NetFlow

Flexible NetFlow MPLS Egress NetFlow

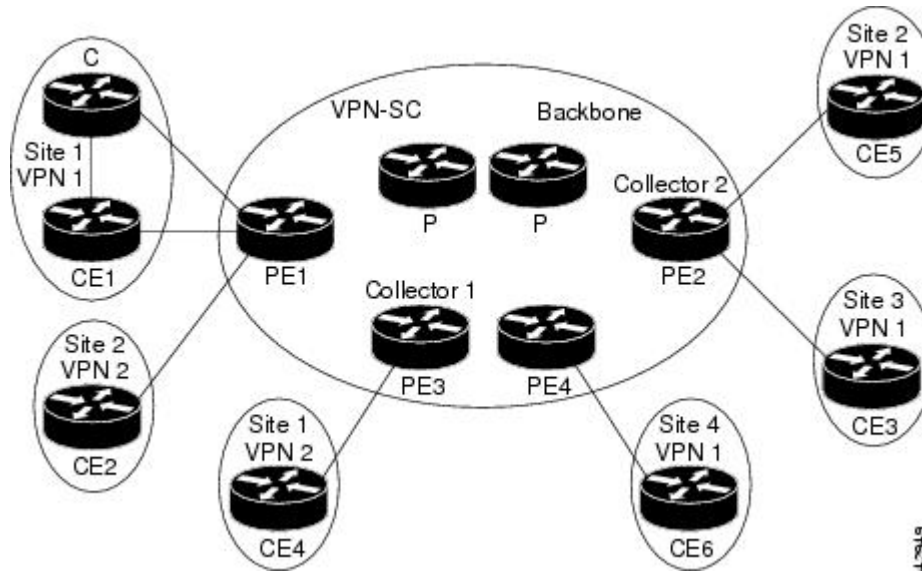
The Flexible NetFlow - MPLS Egress NetFlow feature allows you to capture IP flow information for packets that arrive on a router as Multiprotocol Label Switching (MPLS) packets and are transmitted as IP packets. This feature allows you to capture the MPLS VPN IP flows that are traveling through the service provider backbone from one site of a VPN to another site of the same VPN. The Flexible NetFlow - MPLS Egress NetFlow feature is enabled by applying a flow monitor in output (egress) mode on the provider edge (PE) to customer edge (CE) interface of the provider's network.

The figure below shows a sample MPLS VPN network topology that includes four VPN 1 sites and two VPN 2 sites. If the Flexible NetFlow - MPLS Egress NetFlow is enabled on an outgoing PE interface by applying a flow monitor in output mode, IP flow information for packets that arrive at the PE as MPLS packets (from an MPLS VPN) and that are transmitted as IP packets to the PE router is captured. For example:

- To capture the flow of traffic going to site 2 of VPN 1 from any remote VPN 1 sites, you enable a flow monitor in output mode on link PE2-CE5 of provider edge router PE2.
- To capture the flow of traffic going to site 1 of VPN 2 from any remote VPN 2 site, you enable a flow monitor in output mode on link PE3-CE4 of the provider edge router PE3.

The flow data is stored in the Flexible NetFlow cache. You can use the **show flow monitor** *monitor-name* **cache** command to display the flow data in the cache.

Figure 1: Sample MPLS VPN Network Topology with Flexible NetFlow--MPLS Egress NetFlow Feature



If you configure a Flexible NetFlow exporter for the flow monitors you use for the Flexible NetFlow - MPLS Egress NetFlow feature, the PE routers will export the captured flows to the configured collector devices in the provider network. Applications such as the Network Data Analyzer or the VPN Solution Center (VPN-SC) can gather information from the captured flows and compute and display site-to-site VPN traffic statistics.

Limitations

When using Flexible NetFlow to monitor outbound traffic on a router at the edge of an MPLS cloud, for IP traffic that leaves over a VRF, the following fields are not collected and have a value of 0:

- destination mask
- destination prefix
- destination AS numbers
- destination BGP traffic index
- nexthop
- BGP nexthop

How to Configure Flexible NetFlow MPLS Egress NetFlow

Configuring a Flow Exporter for the Flow Monitor

Perform this optional task to configure a flow exporter for the flow monitor in order to export the data that is collected by Flexible NetFlow to a remote system for further analysis and storage.

Flow exporters are used to send the data that you collect with Flexible NetFlow to a remote system such as a NetFlow Collection Engine. Exporters use UDP as the transport protocol and use the Version 9 export format.



Note Each flow exporter supports only one destination. If you want to export the data to multiple destinations, you must configure multiple flow exporters and assign them to the flow monitor.

You can export to a destination using either an IPv4 or IPv6 address.



Note When you configure an exporter, configure the exporter in such a way that the source interface is defined as a WAN interface. This configuration helps you prevent any unpredictable behavior because the NAT is not applied on the packets.

SUMMARY STEPS

1. **enable**
2. **configure terminal**
3. **flow exporter** *exporter-name*
4. **description** *description*
5. **destination** {*hostname* | *ip-address*} [**vrf** *vrf-name*]
6. **export-protocol** {**netflow-v5** | **netflow-v9** | **ipfix**}
7. **transport udp** *udp-port*
8. **exit**
9. **flow monitor** *flow-monitor-name*
10. **exporter** *exporter-name*
11. **end**
12. **show flow exporter** *exporter-name*
13. **show running-config flow exporter** *exporter-name*

DETAILED STEPS

Procedure

	Command or Action	Purpose
Step 1	enable Example: <pre>Device> enable</pre>	Enables privileged EXEC mode. <ul style="list-style-type: none"> • Enter your password if prompted.
Step 2	configure terminal Example: <pre>Device# configure terminal</pre>	Enters global configuration mode.

	Command or Action	Purpose
Step 3	flow exporter <i>exporter-name</i> Example: <pre>Device(config)# flow exporter EXPORTER-1</pre>	Creates a flow exporter and enters Flexible NetFlow flow exporter configuration mode. <ul style="list-style-type: none"> This command also allows you to modify an existing flow exporter.
Step 4	description <i>description</i> Example: <pre>Device(config-flow-exporter)# description Exports to datacenter</pre>	(Optional) Creates a description for the flow exporter.
Step 5	destination { <i>hostname</i> <i>ip-address</i> } [vrf <i>vrf-name</i>] Example: <pre>Device(config-flow-exporter)# destination 172.16.10.2</pre>	Specifies the hostname or IP address of the system to which the exporter sends data. Note You can export to a destination using either an IPv4 or IPv6 address.
Step 6	export-protocol { netflow-v5 netflow-v9 ipfix } Example: <pre>Device(config-flow-exporter)# export-protocol netflow-v9</pre>	Specifies the version of the NetFlow export protocol used by the exporter. <ul style="list-style-type: none"> Default: netflow-v9.
Step 7	transport udp <i>udp-port</i> Example: <pre>Device(config-flow-exporter)# transport udp 65</pre>	Configures UDP as the transport protocol and specifies the UDP port on which the destination system is listening for exported Flexible NetFlow traffic.
Step 8	exit Example: <pre>Device(config-flow-exporter)# exit</pre>	Exits Flexible NetFlow flow exporter configuration mode and returns to global configuration mode.
Step 9	flow monitor <i>flow-monitor-name</i> Example: <pre>Device(config)# flow monitor FLOW-MONITOR-1</pre>	Enters Flexible NetFlow flow monitor configuration mode for the flow monitor that you created previously.
Step 10	exporter <i>exporter-name</i> Example: <pre>Device(config-flow-monitor)# exporter EXPORTER-1</pre>	Specifies the name of an exporter that you created previously.
Step 11	end Example:	Exits Flexible NetFlow flow monitor configuration mode and returns to privileged EXEC mode.

	Command or Action	Purpose
	Device(config-flow-monitor)# end	
Step 12	show flow exporter <i>exporter-name</i> Example: Device# show flow exporter FLOW_EXPORTER-1	(Optional) Displays the current status of the specified flow exporter.
Step 13	show running-config flow exporter <i>exporter-name</i> Example: Device<# show running-config flow exporter FLOW_EXPORTER-1	(Optional) Displays the configuration of the specified flow exporter.

Creating a Flow Monitor

Perform this required task to create a customized flow monitor.

Each flow monitor has a separate cache assigned to it. Each flow monitor requires a record to define the contents and layout of its cache entries. These record formats can be a user-defined format. An advanced user can create a customized format using the **flow record** command.

Before you begin

If you want to use a customized record, you must create the customized record before you can perform this task. If you want to add a flow exporter to the flow monitor for data export, you must create the exporter before you can complete this task.



Note You must use the **no ip flow monitor** command to remove a flow monitor from all of the interfaces to which you have applied it before you can modify the parameters for the **record** command on the flow monitor.

SUMMARY STEPS

1. **enable**
2. **configure terminal**
3. **flow monitor** *monitor-name*
4. **description** *description*
5. **record** {*record-name*}
6. **cache** {**timeout** {**active**} *seconds* | { **normal** }
7. Repeat Step 6 as required to finish modifying the cache parameters for this flow monitor.
8. **exporter** *exporter-name*
9. **end**
10. **show flow monitor** [[**name**] *monitor-name* [**cache** [**format** {**csv** | **record** | **table**}]]]
11. **show running-config flow monitor** *monitor-name*

DETAILED STEPS

Procedure

	Command or Action	Purpose
Step 1	enable Example: <pre>Device> enable</pre>	Enables privileged EXEC mode. <ul style="list-style-type: none"> • Enter your password if prompted.
Step 2	configure terminal Example: <pre>Device# configure terminal</pre>	Enters global configuration mode.
Step 3	flow monitor <i>monitor-name</i> Example: <pre>Device(config)# flow monitor FLOW-MONITOR-1</pre>	Creates a flow monitor and enters Flexible NetFlow flow monitor configuration mode. <ul style="list-style-type: none"> • This command also allows you to modify an existing flow monitor.
Step 4	description <i>description</i> Example: <pre>Device(config-flow-monitor)# description Used for basic ipv4 traffic analysis</pre>	(Optional) Creates a description for the flow monitor.
Step 5	record {<i>record-name</i>} Example: <pre>Device(config-flow-monitor)# record FLOW-RECORD-1</pre>	Specifies the record for the flow monitor.
Step 6	cache {<i>timeout</i> {<i>active</i>} <i>seconds</i> { <i>normal</i> } Example:	
Step 7	Repeat Step 6 as required to finish modifying the cache parameters for this flow monitor.	—
Step 8	exporter <i>exporter-name</i> Example: <pre>Device(config-flow-monitor)# exporter EXPORTER-1</pre>	(Optional) Specifies the name of an exporter that was created previously.
Step 9	end Example: <pre>Device(config-flow-monitor)# end</pre>	Exits Flexible NetFlow flow monitor configuration mode and returns to privileged EXEC mode.

	Command or Action	Purpose
Step 10	show flow monitor <i>[[name] monitor-name [cache [format {csv record table}]]]</i> Example: Device# show flow monitor FLOW-MONITOR-2 cache	(Optional) Displays the status for a Flexible NetFlow flow monitor.
Step 11	show running-config flow monitor <i>monitor-name</i> Example: Device# show running-config flow monitor FLOW_MONITOR-1	(Optional) Displays the configuration of the specified flow monitor.

Applying a Flow Monitor to an Interface

Before it can be activated, a flow monitor must be applied to at least one interface. Perform this required task to activate a flow monitor.

While running the **ip flow monitor** command for the first interface to enable FNF monitor, you may see the following warning message displaying a GLOBAL memory allocation failure. This log is triggered by enabling FNF monitoring with a large cache size.

```
Jul  4 01:45:00.255: %CPPEXMEM-3-NOMEM: F0/0: cpp_cp_svr: QFP: 0, GLOBAL memory allocation
of 90120448 bytes by FNF failed
Jul  4 01:45:00.258: %CPPEXMEM-3-TOPUSER: F0/0: cpp_cp_svr: QFP: 0, Top User: CPR STILE
EXMEM GRAPH, Allocations: 877, Type: GLOBAL
Jul  4 01:45:00.258: %CPPEXMEM-3-TOPUSER: F0/0: cpp_cp_svr: QFP: 0, Top User: SBC, Bytes
Allocated: 53850112, Type: GLOBAL
```

The warning message does not necessarily indicate a flow monitor application failure. The warning message can indicate internal steps that FNF uses for applying memory from the EXMEM infrastructure.

To ensure that the FNF monitor is enabled successfully, use the **show flow monitor** *monitor-name* command to check **Status** (**allocated** or **not allocated**) of a flow monitor. For more information, see [Displaying the Current Status of a Flow Monitor](#).

SUMMARY STEPS

1. **enable**
2. **configure terminal**
3. **interface** *type number*
4. **{ip | ipv6} flow monitor** *monitor-name {input | output}*
5. Repeat Steps 3 and 4 to activate a flow monitor on any other interfaces in the device over which you want to monitor traffic.
6. **end**
7. **show flow interface** *type number*
8. **show flow monitor name** *monitor-name cache format record*

DETAILED STEPS

Procedure

	Command or Action	Purpose
Step 1	enable Example: <pre>Device> enable</pre>	Enables privileged EXEC mode. <ul style="list-style-type: none"> • Enter your password if prompted.
Step 2	configure terminal Example: <pre>Device# configure terminal</pre>	Enters global configuration mode.
Step 3	interface <i>type number</i> Example: <pre>Device(config)# interface GigabitEthernet 0/0/0</pre>	Specifies an interface and enters interface configuration mode.
Step 4	{ip ipv6} flow monitor <i>monitor-name</i> {input output} Example: <pre>Device(config-if)# ip flow monitor FLOW-MONITOR-1 input</pre>	Activates a flow monitor that was created previously by assigning it to the interface to analyze traffic.
Step 5	Repeat Steps 3 and 4 to activate a flow monitor on any other interfaces in the device over which you want to monitor traffic.	—
Step 6	end Example: <pre>Device(config-if)# end</pre>	Exits interface configuration mode and returns to privileged EXEC mode.
Step 7	show flow interface <i>type number</i> Example: <pre>Device# show flow interface GigabitEthernet 0/0/0</pre>	Displays the status of Flexible NetFlow (enabled or disabled) on the specified interface.
Step 8	show flow monitor name <i>monitor-name</i> cache format record Example: <pre>Device# show flow monitor name FLOW_MONITOR-1 cache format record</pre>	Displays the status, statistics, and flow data in the cache for the specified flow monitor.

Configuration Examples for Flexible NetFlow MPLS Egress NetFlow

Example: Configuring Flexible NetFlow Egress Accounting for IPv4 and IPv6 Traffic

The following example shows how to configure Flexible NetFlow egress accounting for IPv4 and IPv6 traffic.

This example starts in global configuration mode.

```
!  
flow record v4_r1  
match ipv4 tos  
match ipv4 protocol  
match ipv4 source address  
match ipv4 destination address  
match transport source-port  
match transport destination-port  
collect counter bytes long  
collect counter packets long  
!  
flow record v6_r1  
match ipv6 traffic-class  
match ipv6 protocol  
match ipv6 source address  
match ipv6 destination address  
match transport source-port  
match transport destination-port  
collect counter bytes long  
collect counter packets long  
!  
flow monitor FLOW-MONITOR-1  
record v4_r1  
exit  
!  
!  
flow monitor FLOW-MONITOR-2  
record v6_r1  
exit  
!  
ip cef  
ipv6 cef  
!  
interface GigabitEthernet0/0/0  
ip address 172.16.6.2 255.255.255.0  
ipv6 address 2001:DB8:2:ABCD::2/48  
ip flow monitor FLOW-MONITOR-1 output  
ipv6 flow monitor FLOW-MONITOR-2 output  
!
```

Additional References

Related Documents

Related Topic	Document Title
Cisco IOS commands	Cisco IOS Master Command List, All Releases
Flexible NetFlow conceptual information and configuration tasks	<i>Flexible NetFlow Configuration Guide</i>
Flexible NetFlow commands	<i>Cisco IOS Flexible NetFlow Command Reference</i>

Standards/RFCs

Standard	Title
No new or modified standards/RFCs are supported by this feature.	—

MIBs

MIB	MIBs Link
None	To locate and download MIBs for selected platforms, Cisco software releases, and feature sets, use Cisco MIB Locator found at the following URL: http://www.cisco.com/go/mibs

Technical Assistance

Description	Link
The Cisco Support and Documentation website provides online resources to download documentation, software, and tools. Use these resources to install and configure the software and to troubleshoot and resolve technical issues with Cisco products and technologies. Access to most tools on the Cisco Support and Documentation website requires a Cisco.com user ID and password.	http://www.cisco.com/cisco/web/support/index.html

Feature Information for Flexible NetFlow - MPLS Egress NetFlow

The following table provides release information about the feature or features described in this module. This table lists only the software release that introduced support for a given feature in a given software release train. Unless noted otherwise, subsequent releases of that software release train also support that feature.

Use Cisco Feature Navigator to find information about platform support and Cisco software image support. To access Cisco Feature Navigator, go to www.cisco.com/go/cfn. An account on Cisco.com is not required.

Table 1: Feature Information for Flexible NetFlow - MPLS Egress NetFlow

Feature Name	Releases	Feature Information
Flexible NetFlow - MPLS Egress NetFlow	12.2(33)SRE 12.2(50)SY 12.4(22)T 15.0(1)SY 15.0(1)SY1 Cisco IOS XE Release 3.1S	<p>The Flexible NetFlow--MPLS Egress NetFlow feature allows you to capture IP flow information for packets undergoing MPLS label disposition; that is, packets that arrive on a router as MPLS packets and are transmitted as IP packets.</p> <p>Support for this feature was added for Cisco 7200 and 7300 NPE series routers in Cisco IOS Release 12.2(33)SRE.</p> <p>No commands were introduced or modified by this feature.</p>

