



Appendix

This chapter contains the following sections:

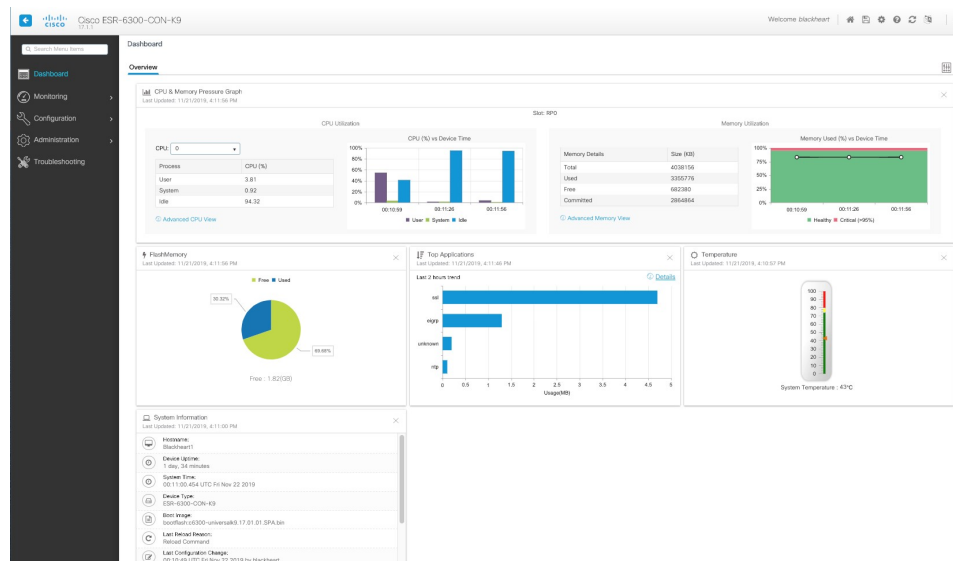
- [Web User Interface, on page 1](#)
- [Compliance and Safety Information, on page 2](#)
- [RoHS \(Restriction of Hazardous Substances\), on page 2](#)
- [Related Documentation, on page 3](#)
- [Communications, Services, and Additional Information, on page 3](#)

Web User Interface

The Cisco IOS-XE operating system provides a graphical user interface for monitoring and configuration of your device. The WebUI needs to be enabled before it can be used. Use these commands to enable it:

```
username admin privilege 15 password 0 passwordname
ip http server
ip http authentication local
ip http secure-server
```

When launched, the initial display is a dashboard that looks similar to the following example:



Compliance and Safety Information

The ESR6300 was installed in a representative chassis, tested, and shown to meet the standards listed in the following table. Individual results will depend on final implementation. Formal compliance testing must be performed by the integrator in a fully assembled product.

Specification	Description
Safety	<ul style="list-style-type: none"> • UL 60950-1 Recognized Component (R/C) • CSA22.2-No. 60950-1 • EN60950-1 • IEC60950-1
Emissions	<ul style="list-style-type: none"> • EN 55022 / CISPR 22 • EN 55032 / CISPR 32 • FCC Part 15 Subpart B • ICES 003 for class A device
Immunity	<ul style="list-style-type: none"> • EN 55024 • EN 55035 • EN 61000-4-2 • EN 61000-4-3 • EN 61000-4-4 • EN 61000-4-5 • EN 61000-4-8 • EN 61000-4-16 • EN 61000-4-18

RoHS (Restriction of Hazardous Substances)

RoHS is directive being adopted worldwide that restricts certain limits of the following materials from certain manufactured products:

- Lead (Pb): < 1000 ppm
- Mercury (Hg): < 100 ppm
- Cadmium (Cd): < 100 ppm
- Hexavalent Chromium: (Cr VI) < 1000 ppm
- Polybrominated Biphenyls (PBB): < 1000 ppm
- Polybrominated Diphenyl Ethers (PBDE): < 1000 ppm

Cisco products fall under RoHS Category 3, Computing & Communications Equipment. Cisco products must be RoHS-certified prior to being shipped/imported to the following RoHS countries: Austria, Belgium, Bulgaria, Cyprus, Czech Republic, Denmark, Estonia, Finland, France, Germany, Greece, Hungary, Ireland, Italy, Latvia, Lithuania, Luxembourg, Malta, Netherlands, Poland, Portugal, Romania, Slovakia, Slovenia, Spain, Sweden, United Kingdom

Related Documentation

Cisco ESR6300 Embedded Series Router

[ESR6300 documentation landing page](#)

Product Independent Documentation

[Cisco Industrial Routers and Industrial Wireless Access Points Antenna Guide](#)

[Cisco IOS XE 17.x](#)

[Cisco SD-WAN](#)

[Cisco IoT Field Network Director](#)

[Cisco Industrial Network Director](#)

Communications, Services, and Additional Information

- To receive timely, relevant information from Cisco, sign up at [Cisco Profile Manager](#).
- To get the business impact you're looking for with the technologies that matter, visit [Cisco Services](#).
- To submit a service request, visit [Cisco Support](#).
- To discover and browse secure, validated enterprise-class apps, products, solutions, and services, visit [Cisco DevNet](#).
- To obtain general networking, training, and certification titles, visit [Cisco Press](#).
- To find warranty information for a specific product or product family, access [Cisco Warranty Finder](#).

Documentation Feedback

To provide feedback about Cisco technical documentation, use the feedback form available in the right pane of every online document.

