



# Release Notes for Cisco Connected Grid Device Manager, Version 1.1

---

**Last Published: August 2012**

**Part Number: OL-27651-03**

Cisco 1000 Series Connected Grid Routers (Cisco CG-OS routers) are multi-service communications platforms designed for use in field area networks. The portfolio consists of two models - Cisco CGR 1240 and Cisco CGR 1120 - both ruggedized to varying degrees for outdoor and indoor deployments. Both models are modular and support a wide-range of communications interfaces such as 2G/3G, Ethernet, and WiFi.

The Cisco Connected Grid Device Manager (Device Manager) is a Windows-based application that field technicians can use to manage the Cisco CG-OS Router remotely.

The Device Manager connects to the Cisco CG-OS Router by using a secure Ethernet or WiFi link.

## Tell Us What You Think



Send your feedback about this document directly to the Connected Energy Documentation Team.

[Connected Energy Documentation Feedback Form](#)



---

**Americas Headquarters:**  
Cisco Systems, Inc., 170 West Tasman Drive, San Jose, CA 95134-1706 USA

# Contents

This document contains the following sections:

- [New Features, page 2](#)
- [System Requirements, page 3](#)
- [Installation Notes, page 3](#)
- [Operational Notes, page 4](#)
- [Caveats, page 4](#)
- [Documentation Updates, page 5](#)
- [Related Documentation, page 7](#)
- [Obtaining Documentation and Submitting a Service Request, page 7](#)

## New Features

[Table 1](#) lists the new features added in Cisco Connected Grid Device Manager, Version 1.1(.0.131).

**Table 1**      ***New Feature Summary for CG-DM Version 1.1***

<b>Feature</b>	<b>Description</b>	<b>Related Documentation</b>
Support for Cisco 1120 Connected Grid Router (CGR 1120)	The new CGR 1120 is a ruggedized communication platform, designed for use inside substations or utility cabinets. This platform is built to meet the communication infrastructure needs of electric, gas, and water utilities.  Applications for the CGR 1120 include Advanced Metering Infrastructure (AMI), Distribution Automation (DA), integration of Distributed Energy Resources (DER), and remote workforce automation.	See <a href="#">Cisco 1120 Connected Grid Router Hardware Installation Guide</a> .
Upload Image one-touch button	The Upload Image button allows you to upload and store a copy of a software image on the CGR without initiating an immediate image install. You can find this new feature on the Update Image page.	See <a href="#">Documentation Updates, page 5</a> .

# System Requirements

Microsoft Windows 7 Enterprise / Professional or Windows XP (with Service Pack 3)

2 GHz or faster processor recommended

1 GB RAM minimum (for potential large log file processing)

WiFi or Ethernet interface

4 GB disk storage space

Windows login enabled

Utility-signed Certificate Authority (CA) and Client Certificate for router authentication (obtained from your IT department)

## Installation Notes



### Note

---

Before installing the Device Manager, you must install the client identity and CA certificates in the computer.

---

To install the certificate on the computer running the Device Manager, follow these steps.

- 
- Step 1** Contact your IT Department for the PKCS #12 formatted certificate, which should contain the client identity and CA certificates (along with the private key and its password to import the certificates onto the laptop).
  - Step 2** Copy the certificate (provided by your IT Department) to your computer, for example, on the Desktop.
  - Step 3** Double-click the certificate to open the Installation Wizard.
  - Step 4** Click **Next** to start the installation.
  - Step 5** Browse to the location of the certificate file, and then click **Next**.
  - Step 6** Enter the password, unmark the 'Enable strong private key protection', mark 'Include all extended properties', and then click **Next**.
  - Step 7** Keep the default setting 'Automatically select the certificate store based on the type of certificate,' and then click **Next**.
  - Step 8** Click **Finish**.
  - Step 9** Click **OK** to complete installation of the certificate.
  - Step 10** Launch the Device Manager.



### Note

---

If a valid Certificate Common Name is not found in the registry, then Device Manager will launch the Settings page instead. After you enter a valid Certificate Common Name, the Device Manager will launch.

---

To verify the client certificate (optional), follow these steps.

---

**Step 1** (Optional) Verify the client certificate in the Internet Explorer browser:

IE browser\Tools\Internet Options\Content\Certificates\Personal

**Step 2** (Optional) Verify the CA certificate in the Internet Explorer browser:

IE browser\Tools\Internet Options\Content\Certificates\Trusted Root Certification Authorities

---

## Operational Notes

### WiMAX Module Not Supported

Although references to the Cisco Connected Grid WiMAX Module for CGR 1000 Series appear in this version of the Cisco Connected Grid Device Manager, it is not currently supported on the CGR 1000 routers.

## Caveats

### Open Caveats

- **CSCub00167**

**Symptom:** An improper error indication related to a CGR 1000 image update is returned to the Device Manager.

**Conditions:** All conditions.

**Workaround:** There is no workaround.

- **CSCub16913**

**Symptom:** Instead of connecting to the specified CGR 1000 through an Ethernet connection, the CG-DM might connect to a different, known CGR 1000 over WiFi.

**Conditions:** Occurs on WinXP SP3 (with IPv6 stack) and Windows 7 laptops.

**Workaround:** None.

## Resolved Caveats

- **CSCty59604**

**Symptom:** The SSID passphrase displayed in clear text in the Connected Grid Device Manager Connection screen.

**Conditions:** This issue occurred under all conditions.

**Workaround:** This issue is resolved in Cisco Connected Grid Device Manager, Version 1.1.

- **CSCtz79170**

**Symptom:** When using CG Device Manager (CGDM) 1.0 to upgrade Cisco CG-OS on the CGR 1000, the RFLAN software does not update.

**Conditions:** This issue occurred when using CG DM to upgrade CG-OS releases 5.2(1)CG1(3c) or earlier.

**Workaround:** This issue is resolved in Cisco Connected Grid Device Manager, Version 1.1.

## Documentation Updates

### Omissions

This section provides details on features that are not documented in the latest version of the *Cisco Connected Grid Device Manager 1.1 Installation and User Guide*:

- [Upload Image One-Touch Button, page 6](#)

## Upload Image One-Touch Button

An Upload Image option is available on the Update Image page.

The Upload Image button allows you to upload and store a copy of a software image on the CGR 1000 without initiating an immediate image install.

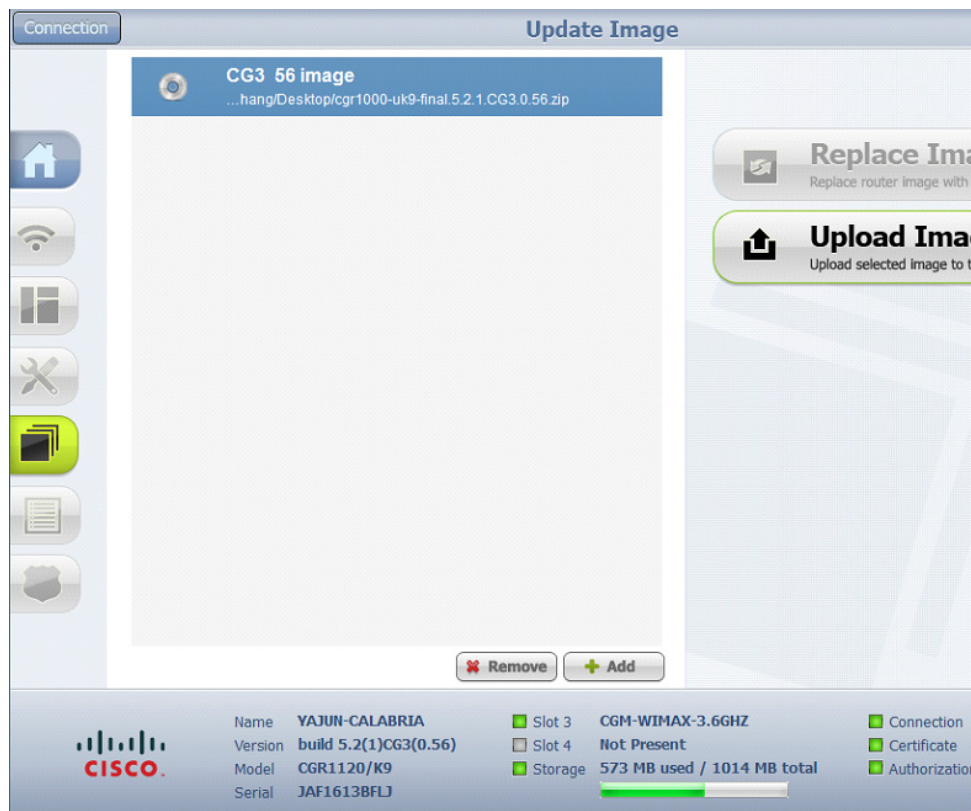
To upload a software image to a CGR 1000 router, do the following:

- 
- Step 1** After log in to the target router and Device Manager, choose **Update Image**.
- Step 2** At the Update Image page, select the software image that you want to upload to the CGR 1000 (left-pane).



**Note** If the software image that you want to download is not listed, click **Add** and browse to the image; and, then click **OK** to upload the image.

---



- Step 3** Click **Upload Image**.
-

## Related Documentation

See all support documentation for Cisco 1000 Series Connected Grid Routers at:

[www.cisco.com/go/cgr1000-docs](http://www.cisco.com/go/cgr1000-docs)

See all support documentation for Cisco Connected Grid Modules at:

[www.cisco.com/go/cg-modules](http://www.cisco.com/go/cg-modules)

## Obtaining Documentation and Submitting a Service Request

For information on obtaining documentation, submitting a service request, and gathering additional information, see the monthly *What's New in Cisco Product Documentation*, which also lists all new and revised Cisco technical documentation, at:

<http://www.cisco.com/en/US/docs/general/whatsnew/whatsnew.html>

Subscribe to the What's New in Cisco Product Documentation as an RSS feed and set content to be delivered directly to your desktop using a reader application. The RSS feeds are a free service. Cisco currently supports RSS Version 2.0.


---

This document is to be used in conjunction with the documents listed in the "Installation Notes" section.

Cisco and the Cisco logo are trademarks or registered trademarks of Cisco and/or its affiliates in the U.S. and other countries. To view a list of Cisco trademarks, go to this URL: [www.cisco.com/go/trademarks](http://www.cisco.com/go/trademarks). Third-party trademarks mentioned are the property of their respective owners. The use of the word partner does not imply a partnership relationship between Cisco and any other company. (1110R)

Any Internet Protocol (IP) addresses and phone numbers used in this document are not intended to be actual addresses and phone numbers. Any examples, command display output, network topology diagrams, and other figures included in the document are shown for illustrative purposes only. Any use of actual IP addresses or phone numbers in illustrative content is unintentional and coincidental.

© 2012 Cisco Systems, Inc. All rights reserved.

 Printed in the USA on recycled paper containing 10% postconsumer waste.

