



## Installation

---

This chapter explains how to install the Device Manager software and contains the following topics:

- [Required Expertise, page 2-1](#)
- [System Requirements, page 2-1](#)
- [Certificate Installation, page 2-1](#)
- [Device Manager Installation, page 2-2](#)
- [Device Manager Removal, page 2-3](#)

## Required Expertise

This guide is intended for Field Technicians who have basic experience operating a computer laptop.

## System Requirements

The Device Manager has the following system requirements:

- Microsoft Windows 7 Enterprise
- 2 GHz or faster processor recommended
- 1 GB RAM minimum (for potential large log file processing)
- WiFi or Ethernet interface
- 4 GB disk storage space
- Windows login enabled
- Utility-signed Certificate Authority (CA) and Client Certificate for router authentication (obtained from your IT department)
- Customer-specific IT security hardening to keep the Device Manager laptop secure

## Certificate Installation

You can import certificates through the Device Manager by employing the Setup wizard or by command line. (See [Import Certificates, page 3-35](#).)

When the Device Manager cannot locate a valid Certificate Common Name in the registry, the Device Manager launches the Settings page to import a certificate.

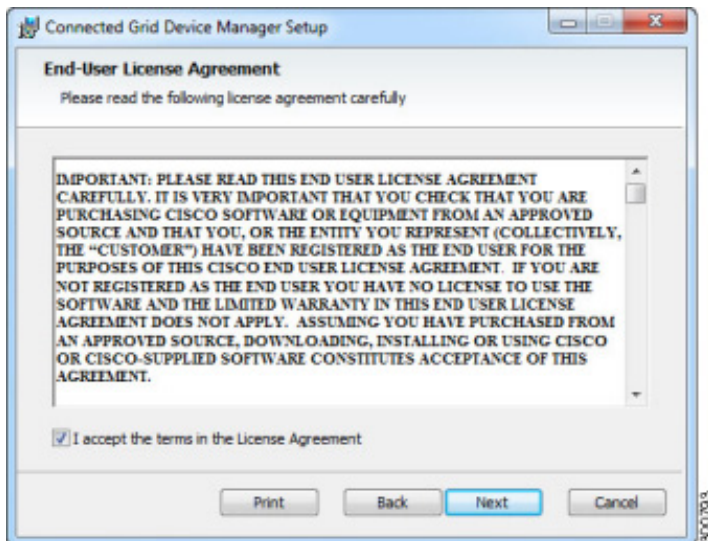
## Device Manager Installation

Follow these steps to install the Device Manager:

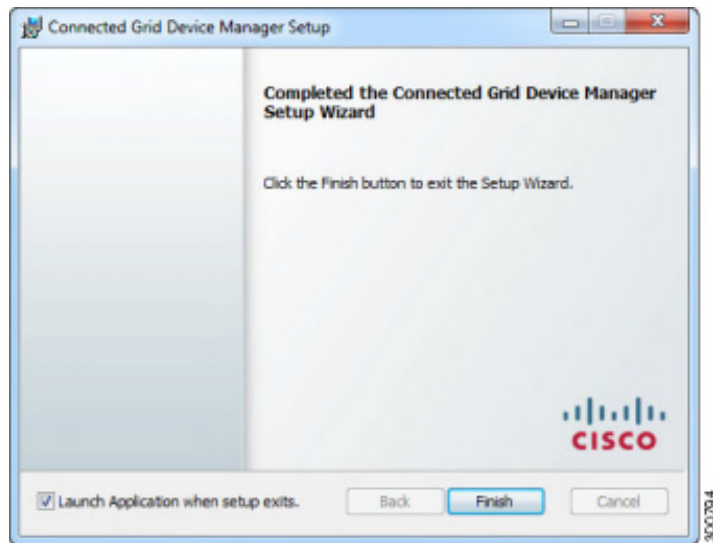
- Step 1** Double-click the CGDManager executable to start installation.
- Step 2** Click **Next**.



- Step 3** Select the check box to accept the terms of the License Agreement, and then click **Next**.



- Step 4** Click **Finish** to exit the Setup Wizard and launch the Device Manager.



When the Device Manager cannot locate a valid Certificate Common Name in the registry, the Device Manager launches the Settings page to import a certificate.

---

## Device Manager Removal

To remove the Device Manager application, click **Start > All Programs > Cisco CGD Manager > Uninstall Cisco CGD Manager**, or use Add or Remove Programs from the Control Panel.

