



CHAPTER 2

Installation

This chapter explains how to install the Device Manager software, and contains the following topics:

- [Required Expertise, page 2-1](#)
- [System Requirements, page 2-1](#)
- [Certificate Installation, page 2-2](#)
- [Device Manager Installation, page 2-5](#)
- [Device Manager Removal, page 2-6](#)

Required Expertise

This guide is intended for Field Technicians who have experience with a Cisco Field Area Router (FAR).

System Requirements

The Device Manager has the following system requirements:

- Microsoft Windows 7 Enterprise / Professional or Windows XP (with Service Pack 3)
- 2 GHz or faster processor recommended
- 1 GB RAM minimum (for potential large log file processing)
- WiFi or Ethernet interfaces
- 4 GB disk storage space
- Windows login enabled
- Utility-signed Certificate Authority (CA) and Client Certificate for FAR authentication (obtained from your IT department)

Certificate Installation

Before you can install the Device Manager, you must install the client identity and CA certificates in the computer.

Follow these steps to install the certificate on the computer running the Device Manager:

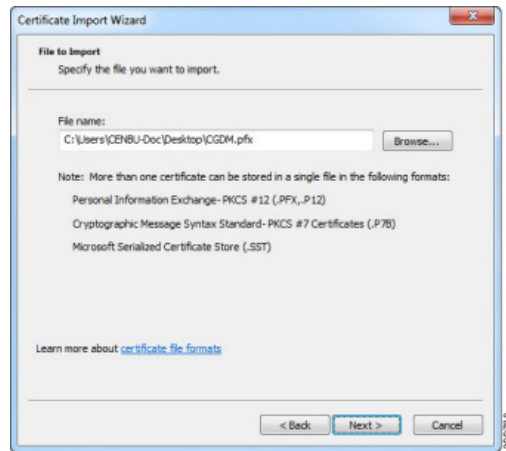
-
- Step 1** Contact your IT Department for the PKCS #12 formatted certificate, which should contain the client identity and CA certificates (along with the private key and its password to import the certificates onto the laptop).
 - Step 2** Copy the certificate (provided by your IT Department) to your computer, for example, on the Desktop.
 - Step 3** Double-click the certificate to open the Installation Wizard.



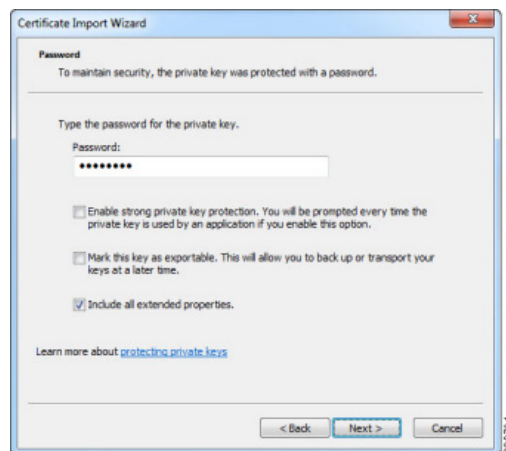
- Step 4** Click **Next** to start the installation.



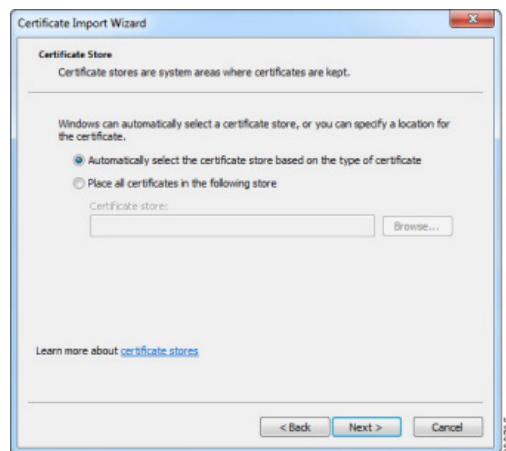
Step 5 Browse to the location of the certificate file, and then click **Next**.



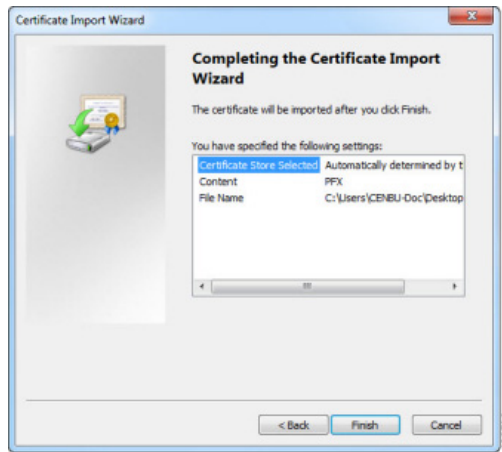
Step 6 Enter the password, unmark the 'Enable strong private key protection', mark 'Include all extended properties', and then click **Next**.



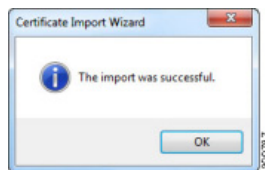
Step 7 Keep the default setting 'Automatically select the certificate store based on the type of certificate,' and then click **Next**.



Step 8 Click **Finish**.



Step 9 Click **OK** to complete installation of the certificate.



Step 10 Open the Windows Registry using regedit and search for the following registry entry:

Computer\HKEY_CURRENT_USER\Software\Cisco\CGDManager\Cgdm

Step 11 Edit the CERT_COMMON_NAME to match the common name of the certificate from step 1 (above).



Note Specify the CA_COMMON_NAME field or leave it as --AutoDetect--.

Follow these steps to verify the client certificate (optional):

Step 1 (Optional) Verify the client certificate in the Internet Explorer browser:

IE browser\Tools\Internet Options\Content\Certificates\Personal

Step 2 (Optional) Verify the CA certificate in the Internet Explorer browser:

IE browser\Tools\Internet Options\Content\Certificates\Trusted Root Certification Authorities

Step 3 (Optional) Delete the *C:\ProgramData\Cisco\CGDManager* folder. Run the Device Manager to automatically generate this folder, and then quit the Device Manager without any actions (to clean up any previous settings).

**Note**

The program data directory for the Device Manager is hidden, by default. To view this directory, open an Explorer window, select Folder Options from the Tools menu, and then select the View tab. Select 'Show hidden files and folders', and then click **OK**.

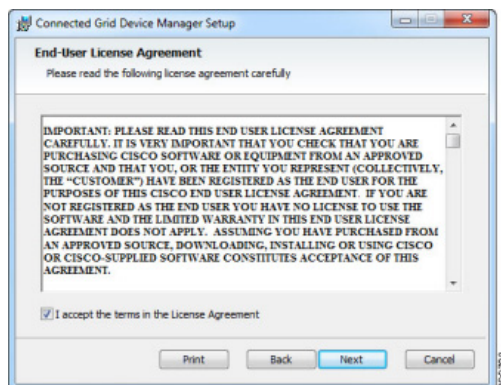
Device Manager Installation

Follow these steps to install the Device Manager:

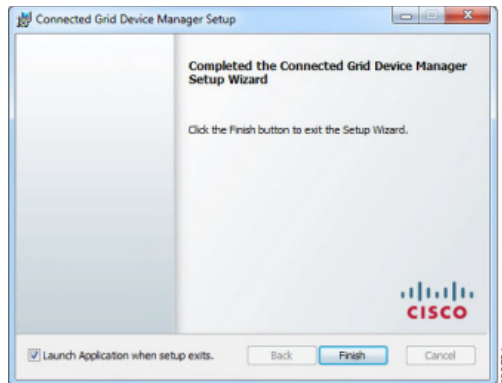
- Step 1** Double-click CGDManager executable to start installation.
- Step 2** Click **Next**.



- Step 3** Select the checkbox to accept the terms of the License Agreement, and then click **Next**.



Step 4 Click **Finish** to exit the Setup Wizard and launch the Device Manager.



Device Manager Removal

To remove the Device Manager application, click **Start > All Programs > Cisco CGD Manager > Uninstall Cisco CGD Manager**, or use Add or Remove Programs from the Control Panel.