



UP Geo Redundancy

- [Feature Summary, on page 1](#)
- [Revision History, on page 1](#)
- [Feature Description, on page 2](#)
- [Benefits of UP Geo Redundancy, on page 7](#)
- [Supported Features in UP Geo Redundancy, on page 7](#)
- [UP Geo Redundancy Configuration Guidelines, on page 8](#)
- [Configuring UP Geo Redundancy , on page 8](#)
- [Session Synchronization between UPs, on page 13](#)
- [Route Synchronization between CP and UP , on page 15](#)
- [Order of Reconciliation, on page 16](#)
- [Monitoring Support, on page 16](#)

Feature Summary

Table 1: Feature Summary

Applicable Product(s) or Functional Area	cnBNG
Applicable Platform(s)	SMI
Feature Default Setting	Disabled – Configuration Required
Related Changes in this Release	First Release
Related Documentation	Not Applicable

Revision History

Table 2: Revision History

Revision Details	Release
First introduced	2022.04.0

Feature Description



Note This feature is Network Services Orchestrator (NSO) integrated.

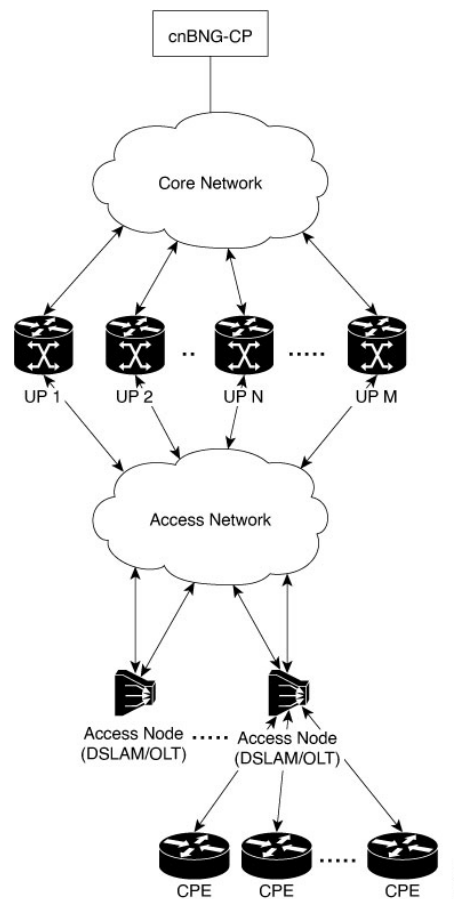
To provide redundancy for the subscriber sessions, cnBNG supports Geographical Redundancy across multiple User Planes (UPs), without having any L1 or L2 connectivity between them. The UPs may be located in multiple geographical locations, and they have L3 connectivity over a shared core network through IP or MPLS routing.

Geo redundancy feature is currently supported for IPoE DHCP-triggered (IPv4, IPv6 and dual-stack) sessions.

UP Geo Redundancy Architecture

The following figure depicts a UP geo redundancy deployment network model:

Figure 1: UP Geo Redundancy Deployment Network Model



The redundancy pairing between UPs work by synchronizing the subscriber state from cnBNG CP to primary (active) and its subordinate (standby).

Geo redundancy works in conjunction with any of the access technologies. The CPEs are agnostic to redundancy; they see only one UP or gateway. The access nodes are dual or multi-homed for redundancy using a variety of technologies based on the service provider network design and choices. Multi-chassis Link Aggregation (MC-LAG), dual-homed (Multiple Spanning Tree - Access Gateway or MST-AG), Ring (MST-AG or G.8032), xSTP and seamless MPLS (pseudowires) are a few such access networks.

For more information on access technologies supported on UP, see the *Broadband Network Gateway Configuration Guide for Cisco ASR 9000 Series Routers* guide.

Subscriber Redundancy Group

Geo redundancy for subscribers is delivered by transferring the relevant session state from primary UP to subordinate UP which can then help in failover (FO) or planned switchover (SO) of sessions from one UP to another. Subscriber Redundancy Group (SRG) which is a set of access-interface (or a single access-interface) is introduced in cnBNG, and all subscribers in an SRG would FO or SO as a group.

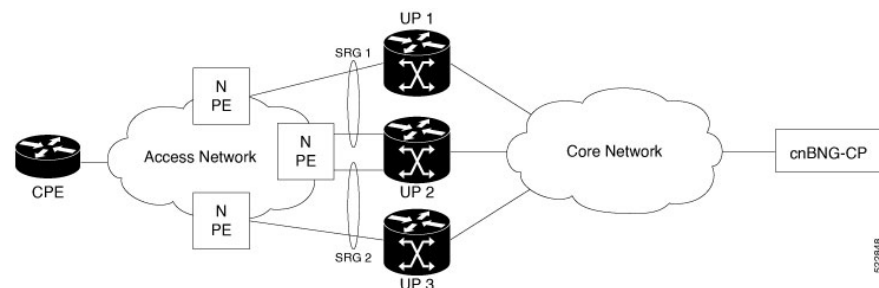
The SRG has two modes of operation:

- Hot-standby
- Warm-standby

Currently UP geo redundancy supports only the hot-standby subordinate mode. This is achieved by a 1:1 mirroring of subscriber session state from the primary to the subordinate where the entire provisioning is done before the FO or SO. The sessions provisioned on subordinate is in sync with the set up on the primary. Because the data plane is already set up for sub-second traffic impact, there is minimal action on switchover in the case of hot-standby mode and therefore, it is suitable for subscribers requiring high service level agreement (SLA). With appropriate capacity planning, the sessions can also be distributed across multiple UPs to achieve an M: N model. The primary-subordinate terminology is always in the context of a specific SRG; not for the UP as a whole.

The following figure depicts a typical subscriber redundancy group (SRG):

Figure 2: Subscriber Redundancy Group



SRG Virtual MAC

For seamless switchover between two UPs, the L2-connected CPE devices must not detect change in gateway MAC and IPv4 or IPv6 addresses. The access technology like MC-LAG uses the same MAC address on both UPs with active-standby roles, providing seamless switchover. Where MAC sharing is not provided by the access technology or protocol (like MST-AG, G.8032), the cnBNG SRG virtual MAC (vMAC) must be used.

For more information on SRG Virtual MAC, see the *BNG Geo Redundancy* chapter of *Broadband Network Gateway Configuration Guide for Cisco ASR 9000 Series Routers* guide.

Session Distribution Across SRG

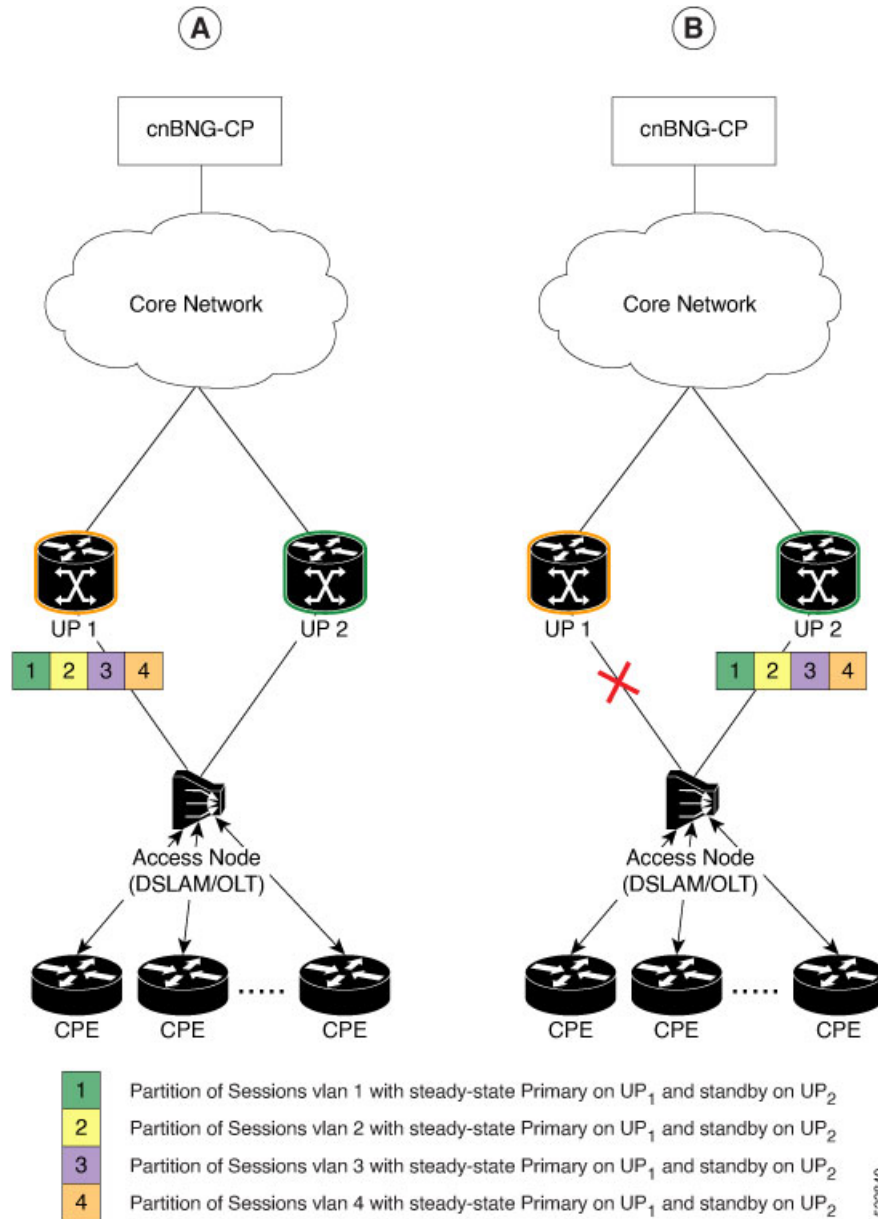
The session distribution across SRGs can be in either of these modes:

- Active-standby mode:

In this mode, a dedicated standby UP can be a subordinate for multiple SRGs from different active UPs which are primaries for those respective SRGs.

This figure shows an active-standby mode of session distribution across SRGs:

Figure 3: Active-standby Mode of Session Distribution



In figure A:

- Sessions are associated with partitions (VLAN 1, 2, 3 and 4) on UP1, with each VLAN mapped to separate SRG configured as primary role.
- UP2 acts as standby for all VLANs.
- Each VLAN has 8K sessions terminated on it.

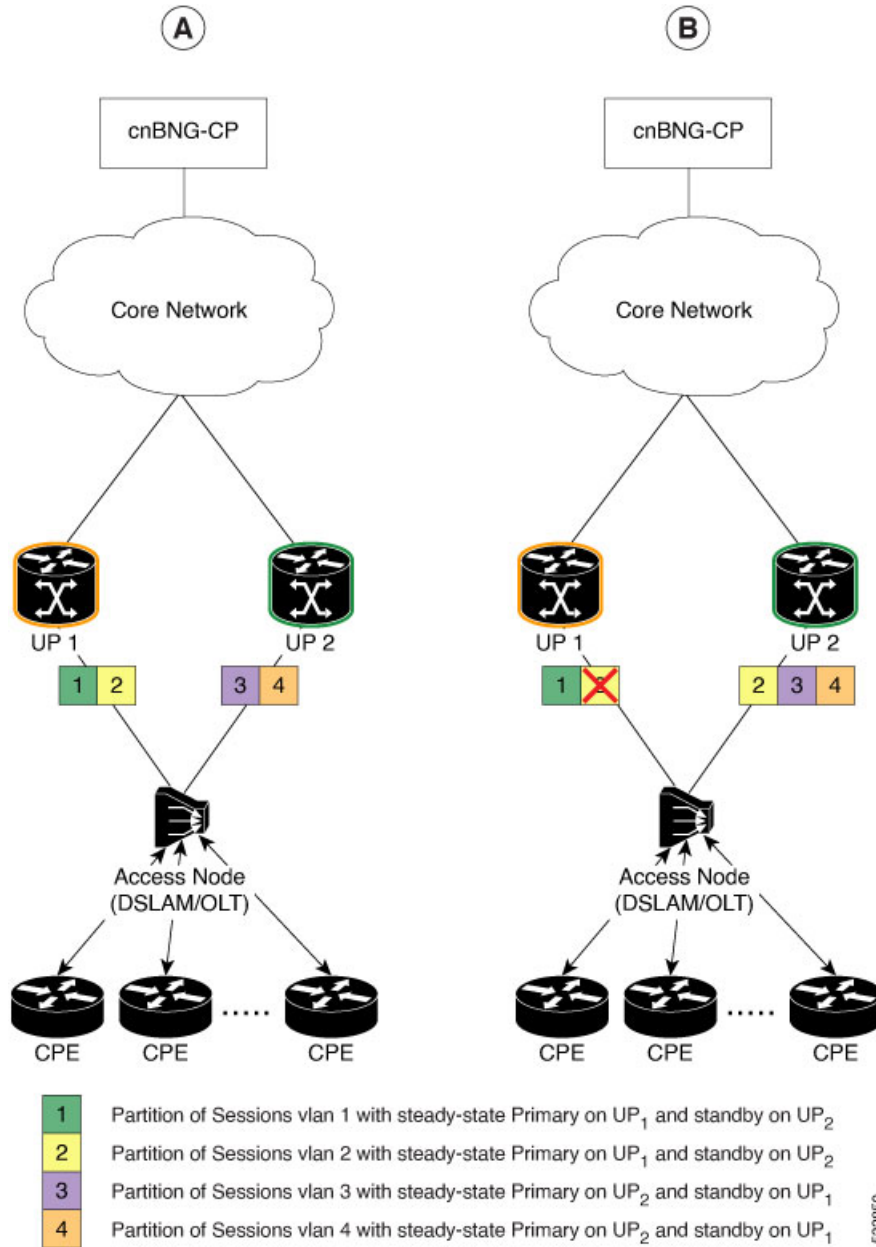
In figure B:

- An interface failure gets detected (using object-tracking of the access-interface).
 - SRG for each VLAN on UP2 gets the primary role.
 - All 32K sessions are switched to UP2.
 - UP2 sees a session termination count of 32K.
- Active-active mode:

In this mode, an UP can be primary for one SRG and a standby for another SRG at the same time.

The following figure shows an active-active mode of session distribution across SRGs:

Figure 4: Active-active Mode of Session Distribution



In figure A:

- Sessions are associated with partitions (VLAN 1, 2) on UP₁, with each VLAN mapped to separate SRG configured as primary role.
- Sessions are associated with partitions (VLAN 3, 4) on UP₂, with each VLAN mapped to separate SRG configured as primary role.
- Each VLAN has 8K sessions terminated on it.
- Each UP has 16K sessions terminated on it.

In figure B:

- The interface associated with VLAN 2 on UP1 goes down.
- Sessions associated with partitions (VLAN 2) on UP1 are switched to UP2.
- UP1 sees a session termination count of 8K and UP2 sees a session termination count of 24K.

Benefits of UP Geo Redundancy

Major benefits of UP Geo Redundancy include:

- Supports various redundancy models such as 1:1 (active-active) and M:N, including M:1.
- Provides flexible redundancy pairing on access-link basis.
- Works with multiple access networks such as MC-LAG, dual-home and OLT rings.
- Supports various types of subscribers such as IPv4, IPv6 and dual-stack IPoE sessions.
- Provides failure protection to access link failures, N4 link failures, LC failures, RP failures and chassis failures.
- Performs automatic switchovers during dynamic failures or planned events such as maintenance, upgrades and transitions.
- Co-exists with other high availability (HA) or redundancy mechanisms.
- Does switchover of the impacted session group only; other session groups remain on the same UP.
- Provides fast convergence and rapid setup of sessions, with minimal subscriber impact during switchover.
- Provides automatic routing convergence towards core and efficient address pool management.
- Provides seamless switchover for subscriber CPE without the need for any signaling.
- Integrates with RADIUS systems.
- Does not impact session scale and call-per-second (CPS) during normal operation.

Supported Features in UP Geo Redundancy

These base geo redundancy features are supported:

- Multiple SRG groups to different peer routers.
- Hot-standby mode for subordinate (that is, subscribers provisioned in hardware on the subordinate as they are synchronized).
- Dynamic role negotiation between peers.
- Manual SRG switchover through command line interface (CLI).
- Dynamic failure detection using object tracking (link up-down, route and IPSLA tracking).
- Revertive timer per SRG group.

- SRG active-active mode without any access protocol.
- G.8032 (dual-home and ring) access technologies.

These DHCP features are supported:

- DHCPv6 IA-NA and IA-PD support for L2 connected sessions.
- DHCPv4 support for L2 connected sessions.
- DHCPv4 or DHCPv6 dual-stack support.
- DHCP server mode.
- Session initiation through DHCPv4 or DHCPv6 protocol.

UP Geo Redundancy Configuration Guidelines

UP Configuration Consistency

- Geo redundancy feature infrastructure synchronizes individual subscriber session state from primary to subordinate. But, it does not synchronize the UP related configurations (namely dynamic-template, DHCP profiles, policy-maps, access-interface configurations, external RADIUS or DHCP server, and so on).
- For successful synchronization and setup of subscriber sessions between the two UPs, it is mandatory that the relevant UP configurations must be identical on the two routers and on the access-interfaces pairs in the SRG.
- While the access-interfaces or their types (or both) may vary between the paired UPs, their outer-VLAN tag (that is, S-VLAN imposed by the access or aggregation devices) must be identical.
- Inconsistencies in base UP or SRG configurations may result in synchronization failure and improper setup of sessions on the subordinate.

Session Sync

Once the session is up on the primary node, the entire session information gets synced to the subordinate node. This includes dynamic synchronization of updates such as CoA or service logon.

Configuring UP Geo Redundancy

To configure the subscriber redundancy group in the control plane, use the following sample configuration:

```

config
  user-plane instance instance_id
    user-plane user_plane_name
      subscriber-redundancy
        group group_name
          disable
          domain-identifier domain_name
          peer-identifier peer_id

```



```

port-id-map port-name port_name port_number
preferred-role-active
revertive-timer revertive_timer_value
exit

```

NOTES:

- **subscriber-redundancy:** Configures subscriber geo-redundancy. All SRG groups are configured in this mode.
- **group** *group_name*: Specifies the name of the subscriber redundancy group that is unique to a user plane.
- **disable:** Disables an SRG group without deleting the entire configuration of the group. By default, an SRG group is enabled.
- **domain-identifier** *domain_name*: Specifies the domain name to identify all groups between two user planes.
- **peer-identifier** *peer_id*: Identifies the peer user-plane for the group. This identifier must be unique across all groups in the control plane. The same peer-identifier must be configured in the peer user-plane.
- **port-id-map port-name** *port_name port_number*: Specifies the mapping of access interfaces between user planes. At least one **port-map-id** must be configured.
- **preferred-role-active:** This is an optional configuration.
Sets the preferred role active for user plane. Default value: false.
- **revertive-timer** *revertive_timer_value*: This is an optional configuration.
Specifies the revertive timer in seconds. *revertive_timer_value* must be an integer in the range of 60 to 3600. This command is available only when **preferred-role-active** is configured.

Configuration Example

The following is a sample configuration for configuring UP Geo Redundancy, as illustrated in Figure 5.

```

config
user-plane
instance 1
user-plane user-plane1
peer-address ipv4 {UP1 ipv4-address}
subscriber-redundancy
group Group1
preferred-role-active
revertive-timer 3600
domain-identifier domain1
peer-identifier Peer1
port-id-map port-name Bundle-Ether1.10 1
exit
exit
user-plane user-plane2
peer-address ipv4 {UP2 ipv4-address}
subscriber-redundancy
group Group1
domain-identifier domain1
peer-identifier Peer1
port-id-map port-name Bundle-Ether2.10 1
exit

```

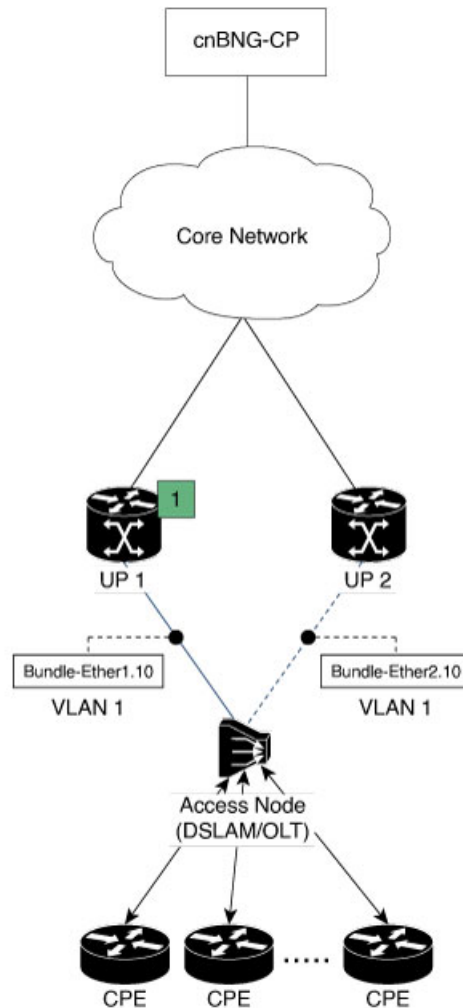
```

exit
exit
exit
exit

```

The following diagram illustrates the sample configuration.

Figure 5: Sample Configuration



1 Partition of Sessions vlan 1 with steady-state Primary on UP₁ and standby on UP₂

522698

Configuration Verification

To verify the configuration, execute the following commands:

- `show subscriber redundancy [count | debug | detail | gr-instance gr_instance_id | srg-peer-id srg_peer_id | upf upf_name]`
- `show subscriber redundancy-sync [gr-instance gr_instance_id | srg-peer-id srg_peer_id | upf upf_name]`

- `show subscriber dhcp [count | detail | filter filter_value | gr-instance instance_id | sublabel sublabel_name]`
- `show subscriber session [detail | filter { smupstate { upf_name/smUpSessionCreated } }]`
- `show subscriber synchronize [srg-peer-id peer_id | upf upf_name]`

For more information on these commands, see the [Monitoring Support, on page 16](#) section.

Configuring IPAM

Dynamic Pool Configuration

Use the following configuration to configure dynamic pool:

```

config
  ipam
    instance instance_id
    source local
      address-pool pool_name
      vrf-name string
      ipv4
        split-size
          per-cache value
          per-dp value
        exit
        address-range start_ipv4_address end_ipv4_address
      exit
      ipv6
        address-ranges
          split-size
            per-cache value
            per-dp value
          exit
          address-range start_ipv6_address end_ipv6_address
        exit
        prefix-ranges
          split-size
            per-cache value
            per-dp value }
          exit
          prefix-range prefix_value length prefix_length
        exit
      exit
    exit
  exit

```

Static Pool Configuration

Use the following configuration to configure static pool:

```

config
  ipam
    instance instance_id
      address-pool pool_name
        vrf-name string
        static enable user-plane srg_id
      ipv4
        split-size
        no-split
        exit
        address-range start_ipv4_address end_ipv4_address
      exit
      ipv6
        address-ranges
          split-size
          no-split
          exit
          address-range start_ipv6_address end_ipv6_address
        exit
        prefix-ranges
          split-size
          no-split
          exit
          prefix-length prefix_length
          prefix-range prefix_value length prefix_length
        exit
      exit
    exit
  exit

```

NOTES:

- **ipam**: Enters the IPAM Configuration mode.
- **instance** *instance_id*: Configures multiple instances for the specified instance and enters the instance sub-mode.
- **source local**: Enters the local datastore as the pool source.
- **address-pool** *pool_name* [**address-quarantine-timer**] [**offline**] [**static** *user_plane_name*] [**vrf-name** *string*]: Configures the address pool configuration. *pool_name* must be the name of the address pool.
- **ipv4**: Enters the IPv4 mode of the pool.
- **split-size** { **per-cache** *value* | **per-dp** *value* }: Specifies the size of the IPv4 range to be split for each IPAM cache allocation. The IPAM server consumes this configuration. The **no-split** command disables the splitting of the address-ranges into smaller chunks.

per-cache *value*: Specifies the size of the IPv4 range to be split for each Data-Plane (User-Plane) allocation. The valid values range from 2 to 262144. The default value is 1024.

per-dp *value*: Specifies the size of the IPv4 range to be split for each Data-Plane (User-Plane) allocation. The valid values range from 2 to 262144. The default value is 256.
- **address-range** *start_ipv4_address* *end_ipv4_address*: Configures the IPv4 address range with the starting and ending IPv4 address.

- **ipv6**: Enters the IPv6 mode of the pool.
- **address-ranges**: Enters the IPv6 address ranges sub-mode.
- **prefix-ranges**: Enters the prefix ranges mode.
- **prefix-length** *prefix_length*: Specifies the IPv6 prefix length.
- **prefix-range** *prefix_value* **length** *prefix_length*: Specifies the IPv6 prefix range, and prefix length.
- **static enable user-plane** *srg_id*: Associates an user plane for the static pool.

Session Synchronization between UPs

This section describes different scenarios where the subscriber needs to be synchronized to a UP manually.

Scenario 1

One UP in a Subscriber Redundancy group is active, and a session is created. Now, another UP in the same SRG is connected for the first time. All the groups in the second UP become standby. To synchronize the sessions with the second (standby) UP, use the following CLI command:

```
bng# subscriber redundancy session-synchronize add domain [ domain_ID ]
target-upf upf_ID
```

You can also use the following CLI command, if there are only two UPs involved (as in Scenario 1):

```
bng# subscriber redundancy session-synchronize add upf-id [ upf_ID ]
target-upf upf_ID
```

Example-1:

```
subscriber redundancy session-synchronize add domain [ Domain12 ] target-upf Upf2
```

The above CLI command synchronizes all the subscribers from active UP, which are part of *Domain12*, to the target UP (*Upf2*).

Or,

```
subscriber redundancy session-synchronize add upf-id [ Upf1 ] target-upf Upf2
```

The above CLI command synchronizes all the subscribers from *Upf1* to *Upf2*.

Example-2:

The following is a sample configuration if two UPs are active, and a third UP is connected later.

```
subscriber redundancy session-synchronize add domain [ Domain12 Domain13 ] target-upf Upf1
```

The above CLI command synchronizes all the subscribers from the active UPs, which are part of *Domain12*, and *Domain13* to the target UP (*Upf1*).

Scenario 2

Initially, a Subscriber Redundancy group is configured on only one UP, and a session is created. Later, the second UP is configured with SRG. Now, to synchronize the session with the second UP in the group, use the following CLI command:

```
bng# subscriber redundancy session-synchronize add peer-id [ peer_ID ]
target-upf upf_ID
```

Example:

```
subscriber redundancy session-synchronize add peer-id [ Peer1 ] target-upf Upf2
```

The above CLI command synchronizes subscribers that are part of a group with peer-id *Peer1* to target UP (*Upf2*).

Scenario 3

A group is removed from an UP. To remove sessions in the group, use the following CLI command:

```
bng# subscriber redundancy session-synchronize delete peer-id [ peer_ID ]
target-upf upf_ID
```

Example:

```
subscriber redundancy session-synchronize delete peer-id [ Peer1 ] target-upf Upf2
```

The above CLI command removes subscribers from target UP (*Upf2*) that are part of the SRG group with peer-id *peer1*.

Scenario 4

All groups are removed from an UP. To remove all sessions in an UP, use the following CLI command:

```
bng# subscriber redundancy session-synchronize delete domain [ domain_list
] target-upf upf_ID
```

Example:

```
subscriber redundancy session-synchronize delete domain [ domain12 domain13 ] target-upf
Upf3
```

The above CLI command deletes all the subscribers that are part of the domains *domain12*, and *domain13* from the target UP (*Upf3*).

Or,

```
subscriber redundancy session-synchronize delete upf-id [ Upf3 ] target-upf Upf3
```

The above CLI command deletes all the subscribers that are related to *Upf3* from the target UP (*Upf3*).



Note You can also delete all non-SRG sessions in the UP.

Scenario 5

An UP from a group is replaced with another UP. To synchronize the sessions, use the following CLI commands:

```
bng# subscriber redundancy session-synchronize delete peer-id [ peer_ID ]
target-upf old_upf_id
```

```
bng# subscriber redundancy session-synchronize add peer-id [ peer_ID ]
target-upf new_upf_id
```

Example:

```
subscriber redundancy session-synchronize delete peer-id [ peer1 ] target-upf Upf1
subscriber redundancy session-synchronize add peer-id [ peer1 ] target-upf Upf2
```

The above CLI commands remove the sessions in the group with peer-id *peer1* from *Upf1*, and add the group to *Upf2*.

Scenario 6

An UP is replaced with another UP in all the groups in a domain. To synchronize the sessions, use the following CLI commands:

```
bng# subscriber redundancy session-synchronize delete domain [ domain_ID ]
    target-upf upf_ID
bng# subscriber redundancy session-synchronize add domain [ domain_ID ]
    target-upf upf_ID
```

Example:

```
subscriber redundancy session-synchronize delete domain [ domain1 ] target-upf Upf1
subscriber redundancy session-synchronize add domain [ domain1 ] target-upf Upf2
```

The above CLI commands remove the sessions in the groups that are part of *domain1* from *Upf1*, and add the groups to *Upf2*.

Scenario 7

All domain/group/peers are moved from one UP to another. Initially, to delete all subscribers from the UP, use the following CLI command:

```
bng# subscriber redundancy session-synchronize delete upf [ upf_ID ]
    target-upf upf_ID
```

Example:

```
subscriber redundancy session-synchronize delete upf [ Upf1 ] target-upf Upf1
```

The above CLI command removes all the sessions from *Upf1*.

Configure the second UP with the configurations deleted from the first UP. Then, to synchronize the sessions, use the following CLI command:

```
bng# subscriber redundancy session-synchronize add domain [ domain_list ]
    target-upf upf_ID
```

Example:

```
subscriber redundancy session-synchronize add domain [ domain1...domainN ] target-upf Upf2
```

The above CLI command synchronizes all the sessions that are in the list of given domains to the new UP (*Upf2*).

Route Synchronization between CP and UP

Use the following CLI command to synchronize the routes between the Control Plane and the User Plane.

```
subscriber route-synchronize upf upf_name
```

To check the status of route synchronization, use the following CLI command:

```
subscriber route-synchronize upf upf-name status
```

Order of Reconciliation

It is recommended to perform the reconciliation activity in the following order:

1. Group reconciliation
2. Route reconciliation
3. CP reconciliation (CP-Audit)
4. CP-UP reconciliation

Monitoring Support

This section describes the monitoring support information for the UP Geo Redundancy feature.

Use the following show and clear commands for troubleshooting. The output of these commands provides specific configuration and status information.

clear subscriber sessmgr

Use this command to clear subscribers.

```
clear subscriber sessmgr [ gr-instance gr_instance_id | srg-peer-id srg_peer_id
| upf upf_name ]
```

NOTES:

- **clear subscriber sessmgr srg-peer-id *srg_peer_id***: Clears subscribers in CP and both UPs.
- **clear subscriber sessmgr upf *upf_name* srg-group-id *srg_group_id***: If the group is active, this command clears sessions in CP and both UPs. If the group is standby, this command clears sessions in the standby UP.

show subscriber redundancy

Use this command to display the key values of SRG groups.

```
show subscriber redundancy [ count | debug | detail | gr-instance
gr_instance_id | srg-peer-id srg_peer_id | upf upf_name ]
```

NOTES:

- **show subscriber redundancy count**: Displays the count of SRG groups.
- **show subscriber redundancy detail**: Displays the detailed content of SRG groups.
- **show subscriber redundancy upf *upf_name***: Displays all the groups related to UPF.
- **show subscriber redundancy peer-id *peer_id* debug**: Displays the detailed output with event history.

The following is a sample output of the **show subscriber redundancy detail** command:

```
bng# show subscriber redundancy detail
Fri Apr 29 14:48:36.840 UTC+00:00
subscriber-details
{
  "subResponses": [
    {
      "PeerID": "Peer15993-x",
      "GroupID": "Group-5-3-15993-x",
      "UP List": {
        "asr9k-3": {
          "N4 State": "Connected",
          "Srg State": "Up",
          "RoleChangeInProgress": true,
          "Srg Role": "Active",
          "Interface map": {
            "GigabitEthernet11636": 1,
            "GigabitEthernet11637": 2
          }
        },
        "asr9k-5": {
          "N4 State": "Disconnected",
          "Srg State": "Init",
          "Srg Role": "Standby",
          "Interface map": {
            "GigabitEthernet58174": 1,
            "GigabitEthernet58175": 2
          }
        }
      }
    }
  ]
}
```

show subscriber redundancy-sync

Use this command to display the subscriber reconciliation details.

```
show subscriber redundancy-sync [ gr-instance gr_instance_id | srg-peer-id
srg_peer_id | upf upf_name ]
```

NOTES:

- **gr-instance** *gr_instance_id*: Displays the reconciliation details for the specified GR instance.
- **srg-peer-id** *srg_peer_id*: Displays the reconciliation details for the specified SRG peer ID.
- **upf** *upf_name*: Displays the reconciliation details for the specified UPF.

The following is a sample output of the **show subscriber redundancy-sync upf upf_name** command:

```
bng# show subscriber redundancy-sync upf asr9k-1
Tue Apr 5 17:31:15.659 UTC+00:00
subscriber-details
{
  "Upf": "asr9k-1",
  "State": "Completed",
  "Status": "Passed",
  "Total Number of Groups": 2914,
  "Number of enabled Groups": 2914,
  "Maximum Duration": 180,
  "Started": "2022-04-05 17:31:30 +0000 UTC",
```

```

    "Ended": "2022-04-05 17:31:33 +0000 UTC",
    "Time Taken": "3 Seconds"
  }
}

```

show subscriber dhcp

Use this command to display the DHCP CDL record keys per session.

```

show subscriber dhcp [ count | detail | filter filter_value | gr-instance
instance_id | sublabel sublabel_name ]

```

NOTES:

- **show subscriber dhcp detail:** Displays the session details from DHCP CDL record.

The following is a sample output of the **show subscriber dhcp** command:

```

bng# show subscriber dhcp
Mon Mar 14 09:12:59.135 UTC+00:00
subscriber-details
{
  "subResponses": [
    {
      "records": [
        {
          "cdl-keys": [
            "aall.0000.0001:m:100:v1:200:v2:1:p:Peer1:r@dhcp",
            "sublabel:33554433@dhcp",
            "type:dhcp",
            "mac:aall.0000.0001",
            "srg-peer-id:Peer1",
            "upf:asr9k-2",
            "upf:asr9k-1",
            "port-id:asr9k-1/GigabitEthernet0/0/0/1",
            "port-id:asr9k-2/GigabitEthernet0/0/0/3",
            "vrf:ISP",
            "ipv4-addr:pool-ISP/11.0.96.2",
            "ipv4-pool:pool-ISP",
            "ipv4-range:pool-ISP/11.0.0.1",
            "ipv4-startrange:pool-ISP/11.0.96.0",
            "ipv4-state:bound",
            "ipv6-addr-startrange:pool-ISP/1:2::2000",
            "ipv6-addr:pool-ISP/1:2::2000",
            "ipv6-addr-pool:pool-ISP",
            "ipv6-addr-range:pool-ISP/1:2::1",
            "ipv6-addr-state:bound",
            "afi:dual"
          ]
        }
      ]
    }
  ]
}

```

show subscriber session

Use this command to display the session manager (SM) CDL record keys per session.

```

show subscriber session [ detail | filter { smupstate {
upf_name/smUpSessionCreated } } ]

```

NOTES:

- **show subscriber session detail:** Displays the session details from SM CDL record.
- **show subscriber session filter { smupstate { upf_name/smUpSessionCreated } }:** Use this command to check whether the session is created in the respective UPF for the SRG sessions.

The session count for both UPFs show up in both SM and DHCP CDL records after SRG is created successfully in the respective UPFs.

The following is a sample output of the **show subscriber session** command:

```
bng# show subscriber session
Mon Mar 14 09:12:52.653 UTC+00:00
subscriber-details
{
  "subResponses": [
    {
      "records": [
        {
          "cdl-keys": [
            "33554433@sm",
            "acct-sess-id:Local_DC_33554433@sm",
            "upf:asr9k-1",
            "port-id:asr9k-1/GigabitEthernet0/0/0/1",
            "feat-template:svcl",
            "feat-template:automation-feature-template-accounting",
            "type:sessmgr",
            "mac:aall.0000.0001",
            "sesstype:ipoe",
            "srg-peer-id:Peer1",
            "smupstate:smUpSessionCreated",
            "up-subs-id:asr9k-1/1",
            "smupstate:asr9k-1/smUpSessionCreated",
            "srg-group-id:asr9k-1/Group1",
            "upf:asr9k-2",
            "port-id:asr9k-2/GigabitEthernet0/0/0/3",
            "srg-group-id:asr9k-2/Group1",
            "smstate:established",
            "up-subs-id:asr9k-2/1",
            "smupstate:asr9k-2/smUpSessionCreated",
            "afi:dual"
          ]
        }
      ]
    }
  ]
}
```

show subscriber synchronize

The **subscriber session-synchronize [srg-peer-id peer_id | upf upf_name]** command is used to synchronize subscriber information on the UP.

To view the status of subscriber information synchronization, use the following CLI command:

```
show subscriber synchronize [ srg-peer-id peer_id | upf upf_name ]
```

The following is a sample output of the **show subscriber synchronize** command:

```
bng# show subscriber synchronize srg-peer-id Peer108-x
Tue Apr 5 06:31:51.167 UTC+00:00
```

```

subscriber-details
{
  "asr9k-11": {
    "upf": "asr9k-11",
    "sync status": "sync start in progress",
    "sync state": "Start",
    "sync startTIme": "05 Apr 22 06:31 UTC",
    "sync srgGroupId": "Group-11-8-108-x"
  },
  "asr9k-8": {
    "upf": "asr9k-8",
    "sync status": "sync start in progress",
    "sync state": "Start",
    "sync startTIme": "05 Apr 22 06:31 UTC",
    "sync srgGroupId": "Group-11-8-108-x"
  }
}

```

show ipam dp

Use this command to view the list of UPFs to which the corresponding routes (both static and dynamic) are pushed.

- **show ipam dp peerid { ipv4-address | ipv6-address | ipv6-prefix }**

NOTES:

- **show ipam dp peerid ipv4-address:** Displays the UPFs of IPv4 address type
- **show ipam dp peerid ipv6-address:** Displays the UPFs of IPv6 address type
- **show ipam dp peerid ipv6-prefix:** Displays the UPFs of IPv6 prefix type

The following is a sample output of the **show ipam dp peerid ipv4-address**:

```

bng# show ipam dp peer-asr9k2 ipv4-addr
Wed Mar 30 12:43:09.313 UTC+00:00

```

```

=====
Flag Indication: S(Static) O(Offline) R(For Remote Instance) RF(Route Sync Failed)
G:N/P Indication: G(Cluster InstId) N(Native NM InstId) P(Peer NM InstId)
=====

```

StartAddress	EndAddress	Route	G:N/P	Utilization	Flag
7.67.133.0	7.67.133.255	7.67.133.0/24	1:N/A		S
srg-9k-static2(default) (asr9k-11,asr9k-12)					
7.67.134.0	7.67.134.255	7.67.134.0/24	1:N/A		S
srg-9k-static2(default) (asr9k-11,asr9k-12)					
7.67.135.0	7.67.135.255	7.67.135.0/24	1:N/A		S
srg-9k-static2(default) (asr9k-11,asr9k-12)					
7.67.136.0	7.67.136.255	7.67.136.0/24	1:N/A		S
srg-9k-static2(default) (asr9k-11,asr9k-12)					
7.67.137.0	7.67.137.255	7.67.137.0/24	1:N/A		S
srg-9k-static2(default) (asr9k-11,asr9k-12)					
7.67.138.0	7.67.138.255	7.67.138.0/24	1:N/A		S
srg-9k-static2(default) (asr9k-11,asr9k-12)					
7.67.139.0	7.67.139.255	7.67.139.0/24	1:N/A		S
srg-9k-static2(default) (asr9k-11,asr9k-12)					
7.67.140.0	7.67.140.255	7.67.140.0/24	1:N/A		S
srg-9k-static2(default) (asr9k-11,asr9k-12)					
7.67.141.0	7.67.141.255	7.67.141.0/24	1:N/A		S

```
srg-9k-static2(default) (asr9k-11, asr9k-12)
7.67.142.0          7.67.142.255      7.67.142.0/24      1:N/A              S
srg-9k-static2(default) (asr9k-11, asr9k-12)
33.0.0.0           33.0.7.255        33.0.0.0/21        1:0/-1            0.20%
automation-poolv4(default) (asr9k-11, asr9k-12)
```

show ipam dp