



Cloud Native BNG Control Plane Statistics Reference Guide, Release 2022.01.0

First Published: 2022-01-31

Americas Headquarters

Cisco Systems, Inc.
170 West Tasman Drive
San Jose, CA 95134-1706
USA
<http://www.cisco.com>
Tel: 408 526-4000
800 553-NETS (6387)
Fax: 408 527-0883

THE SPECIFICATIONS AND INFORMATION REGARDING THE PRODUCTS IN THIS MANUAL ARE SUBJECT TO CHANGE WITHOUT NOTICE. ALL STATEMENTS, INFORMATION, AND RECOMMENDATIONS IN THIS MANUAL ARE BELIEVED TO BE ACCURATE BUT ARE PRESENTED WITHOUT WARRANTY OF ANY KIND, EXPRESS OR IMPLIED. USERS MUST TAKE FULL RESPONSIBILITY FOR THEIR APPLICATION OF ANY PRODUCTS.

THE SOFTWARE LICENSE AND LIMITED WARRANTY FOR THE ACCOMPANYING PRODUCT ARE SET FORTH IN THE INFORMATION PACKET THAT SHIPPED WITH THE PRODUCT AND ARE INCORPORATED HEREIN BY THIS REFERENCE. IF YOU ARE UNABLE TO LOCATE THE SOFTWARE LICENSE OR LIMITED WARRANTY, CONTACT YOUR CISCO REPRESENTATIVE FOR A COPY.

The Cisco implementation of TCP header compression is an adaptation of a program developed by the University of California, Berkeley (UCB) as part of UCB's public domain version of the UNIX operating system. All rights reserved. Copyright © 1981, Regents of the University of California.

NOTWITHSTANDING ANY OTHER WARRANTY HEREIN, ALL DOCUMENT FILES AND SOFTWARE OF THESE SUPPLIERS ARE PROVIDED "AS IS" WITH ALL FAULTS. CISCO AND THE ABOVE-NAMED SUPPLIERS DISCLAIM ALL WARRANTIES, EXPRESSED OR IMPLIED, INCLUDING, WITHOUT LIMITATION, THOSE OF MERCHANTABILITY, FITNESS FOR A PARTICULAR PURPOSE AND NON-INFRINGEMENT OR ARISING FROM A COURSE OF DEALING, USAGE, OR TRADE PRACTICE.

IN NO EVENT SHALL CISCO OR ITS SUPPLIERS BE LIABLE FOR ANY INDIRECT, SPECIAL, CONSEQUENTIAL, OR INCIDENTAL DAMAGES, INCLUDING, WITHOUT LIMITATION, LOST PROFITS OR LOSS OR DAMAGE TO DATA ARISING OUT OF THE USE OR INABILITY TO USE THIS MANUAL, EVEN IF CISCO OR ITS SUPPLIERS HAVE BEEN ADVISED OF THE POSSIBILITY OF SUCH DAMAGES.

Any Internet Protocol (IP) addresses and phone numbers used in this document are not intended to be actual addresses and phone numbers. Any examples, command display output, network topology diagrams, and other figures included in the document are shown for illustrative purposes only. Any use of actual IP addresses or phone numbers in illustrative content is unintentional and coincidental.

All printed copies and duplicate soft copies of this document are considered uncontrolled. See the current online version for the latest version.

Cisco has more than 200 offices worldwide. Addresses and phone numbers are listed on the Cisco website at www.cisco.com/go/offices.

Cisco and the Cisco logo are trademarks or registered trademarks of Cisco and/or its affiliates in the U.S. and other countries. To view a list of Cisco trademarks, go to this URL: <https://www.cisco.com/c/en/us/about/legal/trademarks.html>. Third-party trademarks mentioned are the property of their respective owners. The use of the word partner does not imply a partnership relationship between Cisco and any other company. (1721R)

© 2022 Cisco Systems, Inc. All rights reserved.



CONTENTS

PREFACE

About this Guide	v
Conventions Used	v

CHAPTER 1

Cloud Native BNG Control Plane Interface for Metrics	1
Feature Summary and Revision History	1
Summary Data	1
Feature Description	1

CHAPTER 2

Cloud Native BNG Control Plane Metrics	3
cnBNG Accounting Statistics Category	3
cnBNG CP Audit Category	6
cnBNG DHCP Statistics Category	10
cnBNG Flowcontrol Statistics Category	11
cnBNG IPAM Statistics Category	13
cnBNG L2TP Statistics Category	16
cnBNG PFCP and GTPU Packet Statistics Category	17
cnBNG PPPOE PPP Statistics Category	19
cnBNG Radius Statistics Category	24
cnBNG Session Manager Statistics Category	27
cnBNG UPF Status Category	28



About this Guide



Note The documentation set for this product strives to use bias-free language. For purposes of this documentation set, bias-free is defined as language that does not imply discrimination based on age, disability, gender, racial identity, ethnic identity, sexual orientation, socioeconomic status, and intersectionality. While any existing biased terms are being substituted, exceptions may be present in the documentation due to language that is hardcoded in the user interfaces of the product software, language used based on RFP documentation, or language that is used by a referenced third-party product.

This preface describes how the *Cisco Broadband Network Gateway (BNG) Control Plane Statistics Reference Guide* is organized and its document conventions.

- [Conventions Used, on page v](#)

Conventions Used

The following tables describe the conventions used throughout this documentation.

Notice Type	Description
Information Note	Provides information about important features or instructions.
Caution	Alerts you of potential damage to a program, device, or system.
Warning	Alerts you of potential personal injury or fatality. May also alert you of potential electrical hazards.

Typeface Conventions	Description
Text represented as a screen display	This typeface represents displays that appear on your terminal screen, for example: Login:

Typeface Conventions	Description
Text represented as commands	<p>This typeface represents commands that you enter, for example:</p> <p>show ip access-list</p> <p>This document always gives the full form of a command in lowercase letters. Commands are not case sensitive.</p>
Text represented as a command <i>variable</i>	<p>This typeface represents a variable that is part of a command, for example:</p> <p>show card <i>slot_number</i></p> <p><i>slot_number</i> is a variable representing the desired chassis slot number.</p>
Text represented as menu or sub-menu names	<p>This typeface represents menus and sub-menus that you access within a software application, for example:</p> <p>Click the File menu, then click New</p>



CHAPTER 1

Cloud Native BNG Control Plane Interface for Metrics

- [Feature Summary and Revision History](#), on page 1
- [Feature Description](#), on page 1

Feature Summary and Revision History

Summary Data

Table 1: Summary Data

Applicable Product(s) or FunctionalArea	Cloud Native Broadband Network Gateway
Applicable Platform(s)	SMI
Feature Default Setting	Enabled – Always-on
Related Changes in this Release	Not Applicable
Related Documentation	Not Applicable

Feature Description

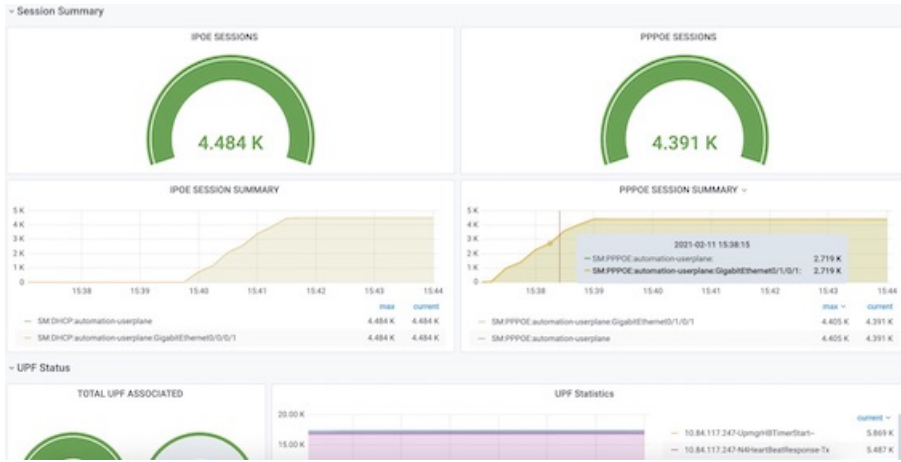
The Cisco Cloud Native Broadband Network Gateway uses Prometheus for gathering statistics/counters from its microservices.

Grafana is used as the user interface to view metrics. It pulls the data from the Prometheus data store. Default graphs for KPI are available using Grafana for rendering a graphical view of the statistics with timelines.

For each microservice, counters and a set of labels are defined. Counters are incremented/decremented with the set of labels depending on the functionality.

The following snapshot is a sample of the Grafana dashboard.

Figure 1: Grafana Dashboard





CHAPTER 2

Cloud Native BNG Control Plane Metrics

- [cnBNG Accounting Statistics Category, on page 3](#)
- [cnBNG CP Audit Category, on page 6](#)
- [cnBNG DHCP Statistics Category, on page 10](#)
- [cnBNG Flowcontrol Statistics Category, on page 11](#)
- [cnBNG IPAM Statistics Category, on page 13](#)
- [cnBNG L2TP Statistics Category, on page 16](#)
- [cnBNG PFCP and GTPU Packet Statistics Category, on page 17](#)
- [cnBNG PPPOE PPP Statistics Category, on page 19](#)
- [cnBNG Radius Statistics Category, on page 24](#)
- [cnBNG Session Manager Statistics Category, on page 27](#)
- [cnBNG UPF Status Category, on page 28](#)

cnBNG Accounting Statistics Category

Accounting_message_current

Description: Current number of Start/Stop/Interim Message triggered towards Server and Waiting for Response

Sample Query: 'Accounting_message_current{acct_type="Start",upf="asr9k-1",service_name="qos1"}'

Labels:

- Label: `acct_type`
Label Description: Accounting Packet type
Example: Start, Interim, Stop
- Label: `acct_level`
Label Description: Accounting category
Example: Session, Service
- Label: `upf`
Label Description: UPF Name
Example: Any string

- Label: `service_name`
Label Description: Name of service
Example: Any string

Accounting_message_total

Description: Total number of Start/Stop/Interim Message trigger towards Radius Server

Sample Query: `'Accounting_message_total{acct_type="Start",upf="asr9k-1",service_name="qos1"}'`

Labels:

- Label: `acct_type`
Label Description: Accounting Packet type
Example: Start, Interim, Stop
- Label: `acct_level`
Label Description: Accounting category
Example: Session, Service
- Label: `upf`
Label Description: UPF Name
Example: Any string
- Label: `aaa_profile`
Label Description: AAA profile used
Example: Any string
- Label: `service_name`
Label Description: Name of service
Example: Any string
- Label: `status`
Label Description: Status of accounting request
Example: Attempt, Success, Failure

Charging_subscriber_total

Description: Total number of Subscriber regardless of accounting enable or not

Sample Query: `'Charging_subscriber_total{upf="asr9k-1"}'`

Labels:

- Label: `upf`
Label Description: UPF Name
Example: Any string

Service_usage_report_total

Description: Total number of Usage Report Coming from PFCP per service

Sample Query:

```
'Service_usage_report_total{report_type="ChargingFinalUsageReport",upf="asr9k-1",service_name="qos1"}'
```

Labels:

- Label: `report_type`
Label Description: Usage report type
Example: ChargingFinalUsageReport, ChargingInterimUsageReport
- Label: `upf`
Label Description: UPF Name
Example: Any string
- Label: `aaa_profile`
Label Description: AAA profile used
Example: Any string
- Label: `service_name`
Label Description: Name of service
Example: Any string

Session_usage_report_total

Description: Total number of Usage Report Coming from PFCP per session

Sample Query:

```
'Session_usage_report_total{report_type="ChargingFinalUsageReport",upf="asr9k-1"}'
```

Labels:

- Label: `report_type`
Label Description: Usage report type
Example: ChargingFinalUsageReport, ChargingInterimUsageReport
- Label: `upf`
Label Description: UPF Name
Example: Any string
- Label: `aaa_profile`
Label Description: AAA profile used
Example: Any string

db_records_total

Description: Current number of Subscriber regardless of accounting enable or not

Sample Query: 'db_records_total{session_type="Charging"}'

Labels:

- Label: `session_type`
Label Description: Session type
Example: Charging, Charging:<upf>

cnBNG CP Audit Category

DHCP_Audit_Confirmation_Total

Description: CP audit events in Dhcp

Sample Query: 'sum(DHCP_Audit_Confirmation_Total) by (event)'

Labels:

- Label: `event`
Label Description: |
type of event which can be:
no-session: Session audited in sm is not present in dhcp
session-fetch-error: Session audited in sm is not present in dhcp
match: Session audited in sm is present in dhcp with matching audit id.
mis-match: Session audited in sm is present in dhcp with wrong audit id.

DHCP_ReconCP_Events_Total

Description: CP audit events in Dhcp

Sample Query: 'sum(DHCP_ReconCP_Events_Total) by (upf)'

Labels:

- Label: `upf`
Label Description: UPF ID
Example: asr9k-1
- Label: `event`
Label Description: |
type of event which can be:
found: Audited Dhcp session is present in sm.
not-found: Audited Dhcp session is not present in sm.
NM-Recon-IP-Not-allocated: IP address of audited Dhcp session is not allocated in pool.
NM-Recon-IP-allocated: IP address of audited Dhcp session is allocated in pool.

IPIDReconReq

Description: CP audit events in PPPoE

Sample Query: 'sum(IPIDReconReq) by (Routename)'

Labels:

- Label: `Routename`
Label Description: UPF ID
Example: asr9k-1
- Label: `Status`
Label Description: |
type of event which can be Success: Audited PPPoE has allocation in ipam.
Failure: Audited PPPoE does not have allocation in ipam.

PPPoE_Audit_Confirmation_Total

Description: CP audit events in PPPoE

Sample Query: 'sum(PPPoE_Audit_Confirmation_Total) by (Event)'

Labels:

- Label: `Event`
Label Description: |
type of event which can be:
no-session: Session audited in sm is not present in pppoe.
session-fetch-failed: Session audited in sm is not present in pppoe.
match: Session audited in sm is present in pppoe with matching audit id.
mis-match: Session audited in sm is present in pppoe with wrong audit id.

PPPoE_ReconCP_Events_Total

Description: CP audit events in PPPoE

Sample Query: 'sum(PPPoE_ReconCP_Events_Total) by (Routename)'

Labels:

- Label: `Routename`
Label Description: UPF ID
Example: asr9k-1
- Label: `Event`
Label Description: |
type of event which can be:
found: Audited Dhcp session is present in sm.

not-found: Audited Dhcp session is not present in sm."

reconCpEventsTotal

Description: CP audit events

Sample Query: `'sum(reconCpEventsTotal) by (event,instance)'`

Labels:

- Label: `upf`

Label Description: UPF ID

Example: asr9k-1

- Label: `event`

Label Description: |

type of event which can be:

AuditStarted: CP audit Started.

FSolAuditStarted: CP audit Started for dhcp and pppoe sessions.

SMAuditStarted: CP audit Started for sm sessions.

dhcp-AuditCompleted: All audit notifications received for dhcp sessions.

pppoe-AuditCompleted: All audit notifications received for pppoe sessions.

sessmgr-AuditCompleted: All audit notifications received for sm sessions.

AuditCompleted: All audit notifications received for all type of sessions.

- Label: `instance`

Label Description: Instance ID of NM Pod

Example: 0, 1

reconCpNotificationTotal

Description: Number of sessions audited

Sample Query: `'sum(reconCpNotificationTotal) by (sessionType)'`

Labels:

- Label: `upf`

Label Description: UPF

Example: asr9k-1

- Label: `sessionType`

Label Description: type of session

Example: dhcp, pppoe, sessmgr

smc_audit_cp_stats_total

Description: CP audit events in SM

Sample Query: 'sum(smc_audit_cp_stats_total) by (Upf)'

Labels:

- Label: `sessType`

Label Description: Type of session

Example: dhcp

- Label: `Upf`

Label Description: Upf ID

Example: asr9k-1

- Label: `status`

Label Description: status can be following:

- DhcpFsolMatch: Session Audited by dhcp has matching audit id.
- PppFsolMatch: Session Audited by pppoe has matching audit id.
- DhcpFsolMismatch: Session Audited by dhcp has audit di mismatch.
- PppFsolMismatch: Session Audited by pppoe has audit di mismatch.
- DhcpMatch: Dhcp Session Audited by sm has matching audit id.
- PppV4Match: PPPoE v4 Session Audited by sm has matching audit id.
- PppV6Match: PPPoE v6 Session Audited by sm has matching audit id.
- DhcpMismatch: Dhcp Session Audited by sm has audit id mismatch.
- DhcpAuditIdMismatch: Dhcp Session Audited by sm has cdl audit id mismatch.
- PppAuditIdMismatch: PPPoE Session Audited by sm has cdl audit id mismatch.
- DhcpAuditConfirmed: Dhcp Confirmed audit id match for session audited in sm.
- PppV6AuditConfirmed: PPPoE Confirmed audit id match for session audited in sm.
- PppV6AuditNotConfirmed: PPPoE Confirmed audit id mismatch for session audited in sm.
- DhcpAuditNotConfirmed: Dhcp Confirmed audit id mismatch for session audited in sm.
- PppV6DhcpAuditConfirmed: Dhcp Confirmed audit id mismatch for pppoe session audited in sm.
- PppV6DhcpAuditNotConfirmed: Dhcp Confirmed audit id mismatch for pppoe session audited in sm.
- PppV4AuditNotConfirmed: PPPoE Confirmed audit id mismatch for session audited in sm.
- PppV4AuditConfirmed: PPPoE Confirmed audit id match for session audited in sm.

cnBNG DHCP Statistics Category

DHCPv4_packet_stats

Description: Total DHCPv4 packet statistics

Sample Query:

```
'DHCPv4_packet_stats{pkt_type="Discover",upf="asr9k-1",port_id="Bundle-Ether1.1"}'
```

Labels:

- Label: `pkt_type`
Label Description: Packet type
Example: Discover, Request, Release, Decline, Inform, Offer, Ack, Nak
- Label: `direction`
Label Description: Transmitted or Received packet
Example: In, Out
- Label: `upf`
Label Description: UPF Name
Example: Any string
- Label: `port_id`
Label Description: Access interface Name
Example: Any string
- Label: `vrf`
Label Description: VRF Name
Example: Any string

DHCPv6_packet_stats

Description: Total DHCPv6 packet statistics

Sample Query: 'DHCPv6_packet_stats{pkt_type="Solicit",upf="asr9k-1",port_id="Bundle-Ether1.1"}'

Labels:

- Label: `pkt_type`
Label Description: Packet type
Example: Solicit, Request, Renew, Rebind, Release, Decline, Inform, Advertise, Reply
- Label: `direction`
Label Description: Transmitted or Received packet
Example: In, Out

- Label: `upf`
Label Description: UPF Name
Example: Any string
- Label: `port_id`
Label Description: Access interface Name
Example: Any string
- Label: `vrf`
Label Description: VRF Name
Example: Any string

db_records_total

Description: Current number of DHCP sessions

Sample Query: `'db_records_total{session_type="dhcp:ipoe"}'`

Labels:

- Label: `session_type`
Label Description: Session type
Example: `dhcp:ipoe`, `dhcp:ipoe:<upf>`, `dhcp:ipoe:<upf>:<intf>`, `dhcp:pppoe`, `dhcp:pppoe:<upf>`, `dhcp:pppoe:<upf>:<intf>`, `dhcp:afi:dual`, `dhcp:afi:ipv4`, `dhcp:afi:ipv6`, `dhcp:ipv4-state:<state>`, `dhcp:ipv6-addr-state:<state>`, `dhcp:ipv6-pfx-state:<state>`

cnBNG Flowcontrol Statistics Category

incoming_drop_queued_total

Description: Total number of incoming queued request dropped

Sample Query:

`'incoming_drop_queued_total{interface="n4",local_address="10.1.0.1",protocol="Udp",peer_address="10.1.0.2",cause="DispatcherQueueFull",queue_id="1"}'`

Labels:

- Label: `interface`
Label Description: Interface Name
Example: N4, GTPU
- Label: `local_address`
Label Description: Local Address
Example: Any string
- Label: `protocol`
Label Description: Protocol Type

Example: Udp

- Label: `peer_address`

Label Description: Peer Address

Example: Any string

- Label: `cause`

Label Description: Drop Cause

Example: DispatcherQueueFull, DispatcherQueueNotAvailable, DispatcherRetryRequestDrop, DispatcherThresholdRequestDrop

- Label: `queue_id`

Label Description: Queue Index

Example: Integer value represented as string

incoming_queued_rate_limit_reached_total

Description: Total number of incoming rate limit hit count

Sample Query: `'incoming_queued_rate_limit_reached_total{interface="n4", protocol="Udp", queue_id="1"}'`

Labels:

- Label: `interface`

Label Description: Interface Name

Example: N4, GTPU

- Label: `protocol`

Label Description: Protocol Type

Example: Udp

- Label: `queue_id`

Label Description: Queue Index

Example: Integer value represented as string

virtual_message_drop_total

Description: Total number of messages dropped in virtual id queue

Sample Query: `'virtual_message_drop_total{interface="n4", msg_type="pfcprresponse", virtual_msg_id="1", cause="VirtualMsgQueueFull"}'`

Labels:

- Label: `interface`

Label Description: Interface Name

Example: n4

- Label: `msg_type`
Label Description: Logical Message Type
Example: `pfcpresponse`, `lcpkeepalive`, `pfcpkeepalive`, `sessionreport`, `all`
- Label: `virtual_msg_id`
Label Description: Virtual Message Id of Queue
Example: 1, 2, 3, 4, 5
- Label: `cause`
Label Description: Drop Cause
Example: `VirtualMsgQueueFull`, `PendingRequestsLimitReached`

virtual_message_rate_limit_reached_total

Description: Total number of times the rate limit is reached for virtual id queue

Sample Query:

```
'virtual_message_rate_limit_reached_total{interface="n4",msg_type="pfcpresponse",virtual_msg_id="1"}'
```

Labels:

- Label: `interface`
Label Description: Interface Name
Example: `n4`
- Label: `msg_type`
Label Description: Logical Message Type
Example: `pfcpresponse`, `lcpkeepalive`, `pfcpkeepalive`, `sessionreport`, `all`
- Label: `virtual_msg_id`
Label Description: Virtual Message Id of Queue
Example: 1, 2, 3, 4, 5

cnBNG IPAM Statistics Category

IPAM_address_allocations_current

Description: Current state of IPAM Address allocations

Sample Query:

```
'IPAM_address_allocations_current{pool="p1",allocationType="dynamic",addressType="IPv4",upf="dpl"}'
```

Labels:

- Label: `pool`
Label Description: name of the pool associated with the request

Example: Any string

- Label: `allocationType`

Label Description: type of allocation associated with the request

Example: static/dynamic

- Label: `addressType`

Label Description: address type associated with the request

Example: IPv4/IPv6NA/IPv6PD

- Label: `upf`

Label Description: upf identifier associated with the request

Example: Any string

- Label: `grInstId`

Label Description: GR instance ID

Example: GR instance ID

IPAM_address_events_total

Description: Total number of IPAM Address events

Sample Query:

```
'IPAM_address_events_total{pool="p1",eventType="Allocation",allocationType="dynamic",addressType="IPv4",upf="cp1"}'
```

Labels:

- Label: `pool`

Label Description: name of the pool associated with the request

Example: Any string

- Label: `eventType`

Label Description: type of event associated with the request

Example: Allocation/Release

- Label: `allocationType`

Label Description: type of allocation associated with the request

Example: static/dynamic

- Label: `addressType`

Label Description: address type associated with the request

Example: IPv4/IPv6NA/IPv6PD

- Label: `upf`

Label Description: upf identifier associated with the request

Example: Any string

- Label: `grInstId`
Label Description: GR instance ID
Example: GR instance ID

IPAM_chunk_allocations_current

Description: Current state of IPAM Address Chunk allocations

Sample Query: `'IPAM_chunk_allocations_current{pool="p1",addressType="IPv4",upf="dp1"}'`

Labels:

- Label: `pool`
Label Description: name of the pool associated with the request
Example: Any string
- Label: `addressType`
Label Description: address type associated with the request
Example: IPv4/IPv6NA/IPv6PD
- Label: `upf`
Label Description: upf identifier associated with the request
Example: Any string
- Label: `grInstId`
Label Description: GR instance ID
Example: GR instance ID

IPAM_chunk_events_total

Description: Total number of IPAM Address Chunk events

Sample Query:

`'IPAM_chunk_events_total{pool="p1",eventType="Allocation",addressType="IPv4",upf="dp1"}'`

Labels:

- Label: `pool`
Label Description: name of the pool associated with the request
Example: Any string
- Label: `eventType`
Label Description: type of event associated with the request
Example: Allocation/Release
- Label: `addressType`
Label Description: address type associated with the request
Example: IPv4/IPv6NA/IPv6PD

- Label: `upf`
Label Description: upf identifier associated with the request
Example: Any string
- Label: `grInstId`
Label Description: GR instance ID
Example: GR instance ID

cnBNG L2TP Statistics Category

L2TPMgr_IPC_Events_total

Description: Total IPC events

Sample Query:

```
'L2TPMgr_IPC_Events_total{MessageType="SessionIDAllocReq",Routername="lps_lns_asr9k-1",Status="Success"}'
```

Labels:

- Label: `Routername`
Label Description: Router name
Example: `lps_lns_asr9k-1`
- Label: `MessageType`
Label Description: Message Type
Example: `BGIPC-Request,BGIPC-Response,SessionDeleteReq,SessionIDReleaseReq,SessionIDReleaseRsp,SessionIDAllocReq,SessionIDAllocRsp,BGIPC-CDN-Response`
- Label: `Status`
Label Description: Status
Example: `IPC-failure,Success,Failure`

L2TPMgr_Packet_Events_total

Description: Total L2TP packets

Sample Query:

```
'L2TPMgr_Packet_Events_total{Direction="Rx",PacketType="CDN",Routername="lps_lns_asr9k-1"}'
```

Labels:

- Label: `Routername`
Label Description: Router name
Example: `lps_lns_asr9k-1`
- Label: `PacketType`
Label Description: Packet Type

Example: CDN,HELLO,ICCN,ICRQ,PPP,SCCCN,SCCRQ,StopCCN,ZLB ACK,ICRP,SCCRP,StopCCN

- Label: `Direction`

Label Description: Direction

Example: Rx,Tx

L2TPMgr_Retransmit_Packet_Events_total

Description: Total L2TP Retransmit packets

Sample Query:

```
'L2TPMgr_Retransmit_Packet_Events_total{PacketType="HELLO",Routername="lps_lns_asr9k-1}'
```

Labels:

- Label: `Routername`

Label Description: Router name

Example: lps_lns_asr9k-1

- Label: `PacketType`

Label Description: Packet Type

Example: CDN,HELLO,ICCN,ICRQ,PPP,SCCCN,SCCRQ,StopCCN,ZLB ACK,ICRP,SCCRP,StopCCN

L2TPMgr_disconnect_events_total

Description: Total L2TP Disconnect Events

Sample Query:

```
'L2TPMgr_disconnect_events_total{MessageType="NoSessionTimeout",Routername="lps_lns_asr9k-1}'
```

Labels:

- Label: `Routername`

Label Description: Router name

Example: lps_lns_asr9k-1

- Label: `MessageType`

Label Description: Message Type

Example: NoSessionTimeout,RxStopCCNfromLAC

cnBNG PFCP and GTPU Packet Statistics Category

bng_proto_dhcp_total

Description: Total number of GTPU DHCP packets received/transmitted

Sample Query: 'bng_proto_dhcp_total{pkt_type="Gtpu",message_name="IPoE", upf="asr9k-1}'

Labels:

- Label: `pkt_type`
Label Description: Type of packet
Example: Gtpu
- Label: `message_direction`
Label Description: Transmitted or received packet
Example: inbound, outbound
- Label: `status`
Label Description: Status of packet processing
Example: accepted, discarded, decode-error, encode-error
- Label: `message_name`
Label Description: IPoE message type
Example: IPoE
- Label: `upf`
Label Description: upf identifier associated with the request
Example: Any string

bng_proto_pppoe_total

Description: Total number of GTPU PPPOE packets received/transmitted

Sample Query: `'bng_proto_pppoe_total{pkt_type="Gtpu",message_name="PPPoE", upf="asr9k-1"}'`

Labels:

- Label: `pkt_type`
Label Description: Type of packet
Example: Gtpu
- Label: `message_direction`
Label Description: Transmitted or received packet
Example: inbound, outbound
- Label: `status`
Label Description: Status of packet processing
Example: accepted, discarded, decode-error, encode-error
- Label: `message_name`
Label Description: PPPoE message type
Example: PPPoE
- Label: `upf`
Label Description: upf identifier associated with the request

Example: Any string

bng_proto_udp_total

Description: Total number of PFCP/GTPU packets received/transmitted

Sample Query:

```
'bng_proto_udp_total{pkt_type="PfcP",message_name="n4_session_establishment_req"}'
```

Labels:

- Label: `pkt_type`
Label Description: Type of packet
Example: PfcP, Gtpu
- Label: `message_direction`
Label Description: Transmitted or received packet
Example: inbound, outbound
- Label: `status`
Label Description: Status of packet processing
Example: accepted, discarded, decode-error, encode-error
- Label: `transport_type`
Label Description: Initial or retransmitted request
Example: original, retransmitted
- Label: `message_name`
Label Description: pfcP/gtpu message type
Example: n4_session_establishment_req, n4_session_establishment_res, n4_session_modification_req, gtpu_bng_control_packet, gtpu_bng_control_packet_dhcp, gtpu_bng_control_packet_pppoe
- Label: `upf`
Label Description: upf identifier associated with the request
Example: Any string

cnBNG PPPOE PPP Statistics Category

PPPOE_L2TP_ipc_events_total

Description: PPPoE L2TP ipc total

Sample Query:

```
'PPPOE_L2TP_ipc_events_total{MessageType="L2TPIDAllocReq",PortID="Bundle-Ether1.2",RouteName="lps_lns_asr9k-2",Status="Success"}'
```

Labels:

- Label: `MessageType`

Label Description: Message Type

Example: L2TPIDAllocReq,L2TPIDReleaseReq

- Label: `PortID`

Label Description: Access interface Name

Example: Any string

- Label: `Routrername`

Label Description: UPF Name

Example: Any string

- Label: `Status`

Label Description: Status of IPC processing

Example: Success,Failure

PPPOE_packet_events_total

Description: Total number of PPPoE packets transmitted and received

Sample Query:

```
'PPPOE_packet_events_total{PacketType="PADI",Routrername="asr9k-1",PortID="Bundle-Ether1.1"}'
```

Labels:

- Label: `PacketType`

Label Description: Packet type

Example: PADI, PADO, PADR, PADS, PADT

- Label: `Direction`

Label Description: Transmitted or Received packet

Example: Tx, Rx

- Label: `Routrername`

Label Description: UPF Name

Example: Any string

- Label: `PortID`

Label Description: Access interface Name

Example: Any string

- Label: `Status`

Label Description: Status of packet processing

Example: Processed | Dropped

PPP_IPCP_packet_events_total

Description: Total number of PPP IPCP packets transmitted and received

Sample Query:

```
'PPP_IPCP_packet_events_total{PacketType="Conf-Req",Routername="asr9k-1",PortID="Bundle-Ether1.1"}'
```

Labels:

- Label: `PacketType`
Label Description: Packet type
Example: Conf-Req, Conf-Ack, Conf-Nak, Term-Req, Term-Ack, Proto-Rej, Code-Rej, Conf-Rej
- Label: `Direction`
Label Description: Transmitted or Received packet
Example: Tx, Rx
- Label: `Routername`
Label Description: UPF Name
Example: Any string
- Label: `PortID`
Label Description: Access interface Name
Example: Any string

PPP_IPV6CP_packet_events_total

Description: Total number of PPP IPv6CP packets transmitted and received

Sample Query:

```
'PPP_IPV6CP_packet_events_total{PacketType="Conf-Req",Routername="asr9k-1",PortID="Bundle-Ether1.1"}'
```

Labels:

- Label: `PacketType`
Label Description: Packet type
Example: Conf-Req, Conf-Ack, Conf-Nak, Term-Req, Term-Ack, Proto-Rej, Code-Rej, Conf-Rej
- Label: `Direction`
Label Description: Transmitted or Received packet
Example: Tx, Rx
- Label: `Routername`
Label Description: UPF Name
Example: Any string
- Label: `PortID`
Label Description: Access interface Name
Example: Any string

PPP_LCP_CHAP_packet_events_total

Description: Total number of PPP LCP CHAP packets transmitted and received

Sample Query:

```
'PPP_LCP_CHAP_packet_events_total{PacketType="Challenge",Routername="asr9k-1",PortID="Bundle-Ether1.1"}'
```

Labels:

- Label: `PacketType`
Label Description: Packet type
Example: Challenge, Response, Rep-Success, Rep-Fail
- Label: `Direction`
Label Description: Transmitted or Received packet
Example: Tx, Rx
- Label: `Routername`
Label Description: UPF Name
Example: Any string
- Label: `PortID`
Label Description: Access interface Name
Example: Any string

PPP_LCP_PAP_packet_events_total

Description: Total number of PPP LCP PAP packets transmitted and received

Sample Query:

```
'PPP_LCP_PAP_packet_events_total{PacketType="Request",Routername="asr9k-1",PortID="Bundle-Ether1.1"}'
```

Labels:

- Label: `PacketType`
Label Description: Packet type
Example: Request, Ack, Nack
- Label: `Direction`
Label Description: Transmitted or Received packet
Example: Tx, Rx
- Label: `Routername`
Label Description: UPF Name
Example: Any string
- Label: `PortID`
Label Description: Access interface Name
Example: Any string

PPP_LCP_packet_events_total

Description: Total number of PPP LCP packets transmitted and received

Sample Query:

```
'PPP_LCP_packet_events_total{PacketType="Conf-Req",Routername="asr9k-1",PortID="Bundle-Ether1.1"}'
```

Labels:

- Label: `PacketType`
Label Description: Packet type
Example: Conf-Req, Conf-Ack, Conf-Nak, Conf-Rej, Term-Req, Term-Ack, Proto-Rej, Code-Rej, Echo-Req, Echo-Rep
- Label: `Direction`
Label Description: Transmitted or Received packet
Example: Tx, Rx
- Label: `Routername`
Label Description: UPF Name
Example: Any string
- Label: `PortID`
Label Description: Access interface Name
Example: Any string

PPPoE_session_limits_total

Description: Total number of PPPoE session limit hits

Sample Query: 'PPPoE_session_limits_total{profile="pppoe-prof1",limit="circuit-id"}'

Labels:

- Label: `profile`
Label Description: pppoe profile name
Example: Any string
- Label: `limit_type`
Label Description: Type of pppoe limit
Example: Any string
- Label: `status`
Label Description: Status of pppoe limit
Example: accepted, warned, rejected

db_records_total

Description: Current PPPoE session count

Sample Query: 'db_records_total{session_type="PPPOE:dual"}'

Labels:

- Label: `session_type`

Label Description: Session type

Example: PPPOE, PPPOE:<upf>, PPPOE:<upf>:<intf>, PPPOE:dual, PPPOE:ipv4, PPPOE:ipv6

cnBNG Radius Statistics Category

Radius_CoaDM_Requests_Current

Description: Current outstanding radius COA/DM requests

Sample Query: 'Radius_CoaDM_Requests_Current{radSvrIp="1.1.1.1",radMsgCode="CoaReq"}'

Labels:

- Label: `radSvrIp`

Label Description: Radius Server IP address

Example: Any string

- Label: `radMsgCode`

Label Description: Message type

Example: CoaReq, DMReq, CoaAck, CoaNak

- Label: `grInstId`

Label Description: GR instance ID

Example: GR instance ID

Radius_CoaDM_Requests_Statistics

Description: Total number of radius COA and DM packets sent and received

Sample Query: 'Radius_CoaDM_Requests_Statistics{radSvrIp="1.1.1.1",radMsgCode="CoaReq"}'

Labels:

- Label: `radSvrIp`

Label Description: Radius Server IP address

Example: Any string

- Label: `radMsgCode`

Label Description: Message type

Example: CoaReq, DMReq, CoaAck, CoaNak

- Label: `radPacketType`

Label Description: Direction

Example: Tx, Rx

- Label: `radResult`

Label Description: Result

Example: Success, Failure_Invalid_Request

- Label: `grInstId`

Label Description: GR instance ID

Example: GR instance ID

Radius_Server_Status

Description: Display active/inactive status of radius-server

Sample Query:

```
'Radius_Server_Status{radSvrIp="1.1.1.1",radSvrPort="1812",radSvrPortType="Auth"}'
```

Labels:

- Label: `radSvrIP`

Label Description: Radius Server IP address

Example: Any string

- Label: `radSvrPort`

Label Description: Radius Server Port

Example: Any string

- Label: `radSvrPortType`

Label Description: Type of server

Example: Auth, Acct

Radius_requests_current

Description: Current outstanding radius requests

Sample Query:

```
'Radius_requests_current{radSvrIp="1.1.1.1",radSvrPort="1812",radSvrPortType="Auth"}'
```

Labels:

- Label: `radSvrIp`

Label Description: Radius Server IP address

Example: Any string

- Label: `radSvrPort`

Label Description: Radius Server Port

Example: Any string

- Label: `radSvrPortType`

Label Description: Type of server

Example: Auth, Acct

- Label: `radMsgCode`

Label Description: Message type

Example: AaaAuthReq, AaaAcctReq

- Label: `radPacketType`

Label Description: Direction

Example: Tx, Rx

- Label: `grInstId`

Label Description: GR instance ID

Example: GR instance ID

Radius_requests_statistics

Description: Total number of radius packets sent and received

Sample Query:

```
'Radius_requests_statistics{radSvrIp="1.1.1.1",radSvrPort="1812",radSvrPortType="Auth"}'
```

Labels:

- Label: `radSvrIp`

Label Description: Radius Server IP address

Example: Any string

- Label: `radSvrPort`

Label Description: Radius Server Port

Example: Any string

- Label: `radSvrPortType`

Label Description: Type of server

Example: Auth, Acct

- Label: `radMsgCode`

Label Description: Message type

Example: AaaAuthReq, AaaAcctReq

- Label: `radPacketType`

Label Description: Direction

Example: Tx, Retry_Tx, Rx

- Label: `radResult`

Label Description: Result

Example: Success, Timeout, Failure_Reject, Failure_NoServer

- Label: `grInstId`

Label Description: GR instance ID

Example: GR instance ID

cnBNG Session Manager Statistics Category

db_records_total

Description: Current number of IPOE, PPPOE sessions

Sample Query: `'db_records_total{session_type="SM:DHCP"}'`

Labels:

- Label: `session_type`

Label Description: Type of session

Example: SM:DHCP, SM:DHCP:<upf>, SM:DHCP:<upf>:<intf>, SM:PPPOE, SM:PPPOE:<upf>, SM:PPPOE:<upf>:<intf>

smc_pre_events_status_total

Description: Total number of execution status of PRE-events.

Sample Query: `'smc_pre_events_status_total{session_type="DHCP", Upf="asr9k-1", preEvent="session-start", status="success"}'`

Labels:

- Label: `SessType`

Label Description: Type of session

Example: DHCP, PPPOE

- Label: `Upf`

Label Description: UPF Name

Example: Any string

- Label: `PortID`

Label Description: Port Identifier

Example: Any string

- Label: `preEvent`

Label Description: PRE event name

Example: session-start, session-activate, session-update, session-disconnect, account-update

- Label: `status`

Label Description: PRE event status

Example: success, error

- Label: `status_code`

Label Description: PRE event status code

Example: `policySuccess`, `policySvmApplyFailed`, `policySubsProfNotFound`, `policyActionAuthenFailure`, `policyActionAuthorFailure`

smc_pre_events_total

Description: Total number of PRE-events started.

Sample Query: `'smc_pre_events_total{session_type="DHCP", Upf="asr9k-1", preEvent="session-start"}'`

Labels:

- Label: `SessType`

Label Description: Type of session

Example: DHCP, PPPOE

- Label: `Upf`

Label Description: UPF Name

Example: Any string

- Label: `PortID`

Label Description: Port Identifier

Example: Any string

- Label: `preEvent`

Label Description: PRE event name

Example: `session-start`, `session-activate`, `session-update`, `session-disconnect`, `account-update`

cnBNG UPF Status Category

UPF_Status

Description: UPF status

Sample Query: `'UPF_Status{Status="Active", UpIp="asr9k-1"}'`

Labels:

- Label: `Status`

Label Description: Status value

Example: Active, InActive, Deleting, Deleted

- Label: `upIp`

Label Description: upf identifier associated with the request

Example: Any string

