



EVPN Virtual Private Wire Service (VPWS) Single Homed

Effective Release Cisco IOS XE 3.18, this feature is now supported on Cisco ASR 920 Series Aggregation Services Router. EVPN-VPWS single homed is a BGP control plane solution for point-to-point services. It has the ability to forward traffic from or to one network to another using the Ethernet Segment without MAC lookup.

EVPN VPWS single homed technology works on IP and MPLS core. IP core to support BGP and MPLS core for switching packets between the endpoints.

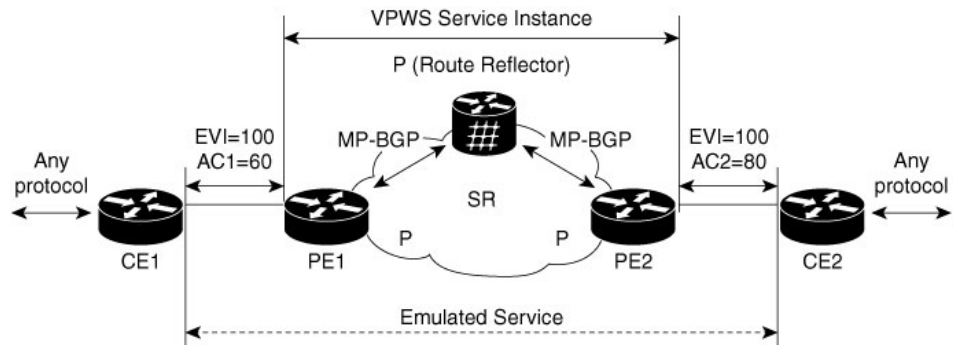
- [Information About EVPN-VPWS, on page 1](#)
- [Prerequisites for EVPN-VPWS, on page 2](#)
- [Restrictions for EVPN-VPWS, on page 2](#)
- [How to Configure EVPN-VPWS, on page 3](#)
- [Configuration Examples for EVPN-VPWS Instance, on page 9](#)
- [Additional References for EVPN-VPWS, on page 11](#)

Information About EVPN-VPWS

The EVPN-VPWS solution supports per EVI Ethernet Auto Discovery route. EVPN defines a new BGP Network Layer Reachability Information (NLRI) that is used to carry all EVPN routes. BGP Capabilities Advertisement is used to ensure that two speakers support EVPN NLRI (AFI 25, SAFI 70) as per RFC 4760.

The architecture for EVPN VPWS is that the PEs run Multi-Protocol BGP in control-plane. The following image describes the EVPN-VPWS over SR configuration:

Figure 1: EVPN-VPWS over SR Configuration



Benefits of EVPN-VPWS Single Homed

- Scalability is achieved without signaling pseudowires.
- There is ease of provisioning.
- Pseudowires (PWs) are not used.
- EVPN-VPWS Single Homed leverages BGP best-path selection (optimal forwarding).

Prerequisites for EVPN-VPWS

- Ensure BGP is configured for EVPN SAFI.
- MPLS LDP core is used for MPLS LSP between PE. MPLS LDP core is required when Segment Routing is not used.
- CE-facing interface, such as service instance, is Ethernet family without IP address on PE.
- BGP session between PEs with 'address-family l2vpn evpn' to exchange EVPN routes.
- A BGP Route Reflector is supported.
- IGP, such as ISIS, core for IP reachability between PEs and BGP next-hop reachability.

Restrictions for EVPN-VPWS

- The combination of EVPN ID and VPWS Instance ID must be unique according to ASN.
- Cisco Multiprotocol Label Switching Traffic Engineering (MPLS-TE) core is *not* supported.
- inter-AS Option B is *not* supported.
- NSR is *not* supported for l2vpn family.
- Ensure that Cisco Nonstop Forwarding (NSF) is configured on BGP, OSPF(iBGP), and MPLS.
- NSF is supported, you should see neigh flap, but not traffic drop.

- Without NSF, if you are doing Stateful Switchover (SSO), then you would see traffic drop for l2vpn evpn traffic.
- ELB is *not* supported on EVPN.
- L2VPN traffic is not load balanced for inner payload src-ip, dst-ip, src-dst-ip hashing algorithms in the egress PoCh interface. We recommend you to use other hashing algorithms like src-mac, dst-mac, src-dst-mac.

Scaling Information

Number of supported EVPN-VPWS service instances is 2000 on Cisco ASR 920 Series Aggregation Services Router.

How to Configure EVPN-VPWS

The following steps are performed to configure EVPN-VPWS

- Configuring BGP for EVPN-VPWS
- Configuring EVPN-VPWS Instance

Configuring BGP for EVPN-VPWS

To configure EVPN-VPWS in BGP, follow these steps:

Procedure

```
router bgp 1
address-family l2vpn evpn
neighbor 192.168.0.1 activate
exit-address-family
```

Configuring EVPN-VPWS Instance

To configure EVPN VPWS instance, follow these steps:

Procedure

```
enable
configure terminal
l2vpn evpn instance 11 point-to-point
vpws context test
service target 100 source 100
member GigabitEthernet0/0/0 service-instance 10
no shut
end
```

Rewrite for EVI Service Instance

You need to have the rewrite command when the VLANs are mismatched on the remote ACs. This allows ingress traffic movement. To configure EVPN-VPWS service instance for rewrite, follow these steps:

Procedure

```
interface GigabitEthernet0/0/1
service instance 2 ethernet
encapsulation dot1q 2
rewrite ingress tag pop 1 symmetric
end
```

Configuring EVPN-VPWS for Logging

To configure EVPN-VPWS for logging, follow these steps:

Procedure

```
enable
configure terminal
l2vpn evpn logging vc-state
end
```

Verifying EVPN-VPWS Instance

Verifying EVPN-VPWS Configuration

You can verify the configuration using the following show commands:

- **show l2vpn evpn summary**
- **show l2vpn evpn evi (<evpn-id> | all) [detail]**
- **show l2vpn evpn rib ead [detail] |evi**
- **show l2vpn evpn checkpoint**
- **show l2vpn evpn route-target [<rt>]**
- **show bgp l2vpn evpn**
- **show l2vpn evpn memory [detail]**

This command displays a summary of L2VPN EVPN with total number of EVIs, VCs and routes.

```
show l2vpn evpn summary
```

```
L2VPN EVPN VPWS:
EVI s (point-to-point): 1
Total VCs: 1
    1 up, 0 down, 0 admin-down, 0 hot-standby, 0 other
Total EVPN EAD routes: 2
    1 local, 1 remote
Total EVI EAD routes: 2
    1 local, 1 remote (1 in-use)
BGP: ASN 1, address-family l2vpn evpn configured
Router ID: 192.168.0.2
```

This command displays brief or detail info for EVIs.

```
show l2vpn evpn evi 100 det
```

```
EVPN instance: 100 (point-to-point)
RD: 192.168.0.2:100 (auto)
```

```

Import-RTs: 1:100
Export-RTs: 1:100
Total VCs: 1
    1 up, 0 down, 0 admin-down, 0 hot-standby, 0 other
Total EAD routes: 2
    1 local, 1 remote (1 in-use)

```

This command displays the contents of the global EVPN route.

```
show l2vpn evpn rib ead
```

```

+- Origin of entry                               (i=iBGP/e=eBGP/L=Local)
| +- Best path                                   (Yes/No)?
| |
v v
O B          RD          Ethernet Segment Id      Eth Tag      Next Hop
+---+-----+-----+-----+-----+-----+-----+
i Y 192.168.0.3:100      0000.0000.0000.0000.0000 2          192.168.0.3
L - 192.168.0.2:100      0000.0000.0000.0000.0000 1

```

```
show l2vpn evpn rib ead evi
```

```

+- Origin of entry                               (i=iBGP/e=eBGP/L=Local)
| +- Provisioned                                (Yes/No)?
| | +- Best path                                (Yes/No)?
| | |
v v v
O P B  EVI      Ethernet Segment Id      Eth Tag      Next Hop      Label
+---+-----+-----+-----+-----+-----+-----+
i Y Y 100      0000.0000.0000.0000.0000 2          192.168.0.3      16
L - - 100      0000.0000.0000.0000.0000 1

```

```
show l2vpn evpn checkpoint
```

```

EVPN Checkpoint info for active RP
Checkpointing is allowed
Bulk-sync checkpointed state for 0 VC
ISSU Context:95, Compatible:1, Negotiated L2HW types: 0

```

This command displays the contents of the global route-target (RT).

```
show l2vpn evpn route-target
```

```

Route Target          EVPN Instances
1:100                  100

```

```
show bgp l2vpn evpn
```

```

BGP table version is 4, local router ID is 192.168.0.2
Status codes: s suppressed, d damped, h history, * valid, > best, i - internal,
               r RIB-failure, S Stale, m multipath, b backup-path, f RT-Filter,
               x best-external, a additional-path, c RIB-compressed,
Origin codes: i - IGP, e - EGP, ? - incomplete
RPKI validation codes: V valid, I invalid, N Not found

```

```

Network          Next Hop          Metric LocPrf Weight Path
Route Distinguisher: 192.168.0.2:100
*> [1][192.168.0.2:100][00000000000000000000][5]/23
    ::                                          32768 ?
Route Distinguisher: 192.168.0.3:100
*>i [1][192.168.0.3:100][00000000000000000000][6]/23
    192.168.0.3          0      100      0 ?

```

This command displays brief or detail EVPN memory usage.

```
show l2vpn evpn memory
```

Verifying EVPN-VPWS Configuration for Logging

Allocator-Name	In-use/Allocated	Count
EVPN DB	: 648/65632 (0%) [9]	Chunk
EVPN EAD DB	: 432/65632 (0%) [6]	Chunk
EVPN EAD Handle Table	: 21856/22040 (99%) [2]	
EVPN EAD Paths	: 104/65632 (0%) [1]	Chunk
EVPN EAD Routes	: 96/65648 (0%) [2]	Chunk
EVPN RIB MGR	: 976/1344 (72%) [4]	
EVPN RIB NHs	: 0/10096 (0%) [0]	Chunk
EVPN RIB RTs	: 96/10096 (0%) [2]	Chunk
EVPN RIB msg	: 0/10096 (0%) [0]	Chunk
EVPN Thread	: 1684/2144 (78%) [5]	
EVPN context chunk	: 768/32864 (2%) [1]	Chunk
EVPN context handle table	: 70968/71152 (99%) [2]	
EVPN dtrace elem per-cont	: 1280/65632 (1%) [20]	Chunk
EVPN dtrace stridx	: 1194876/1194968 (99%) [1]	
EVPN dtrace stridx freeli	: 132764/132856 (99%) [1]	
EVPN dtrace stridx hash	: 76/168 (45%) [1]	
EVPN dtrace stridx slots	: 265532/265624 (99%) [1]	
EVPN dtrace stridx2slot	: 132764/132856 (99%) [1]	
EVPN instance chunk	: 168/10096 (1%) [1]	Chunk
EVPN rt-db ee	: 124/216 (57%) [1]	
EVPN rt-db rte	: 204/296 (68%) [1]	

Total allocated: 2.121 Mb, 2172 Kb, 2225088 bytes

Verifying EVPN-VPWS Configuration for Logging

You can verify the logging using the **show l2vpn evpn vc** command.

This command displays brief information for VCs.

```
show l2vpn evpn vc all
```

EVPN ID	Source	Target	Type	Name/Interface	Status
100	1	2	p2p	vc100	up
				Et0/0	up

This command displays detail information for VCs.

```
show l2vpn evpn vc all detail
```

```
EVPN name: vc100, state: up, type: point-to-point
EVPN ID: 100
VPWS Service Instance ID: Source 1, Target 2
Labels: Local 16, Remote 16
Next Hop Address: 192.168.0.3
Associated member Et0/0 is up, status is up
Dataplane:
  SSM segment/switch IDs: 4098/4097 (used), PWID: 1
Rx Counters
  78 input transit packets, 26425 bytes
  0 drops
Tx Counters
  79 output transit packets, 28240 bytes
  0 drops
5 VC FSM state transitions, Last 5 shown
  Prov: Idle -> Prov, Tue Sep 29 13:15:37.848 (00:52:21 ago)
  AdmUp: Prov -> LocWait, Tue Sep 29 13:15:40.287 (00:52:18 ago)
  LocUp: LocWait -> RemWait, Tue Sep 29 13:15:40.287 (00:52:18 ago)
  RemUp: RemWait -> Act, Tue Sep 29 13:17:19.368 (00:50:39 ago)
  DpUp: Act -> Est, Tue Sep 29 13:17:19.371 (00:50:39 ago)
```

Troubleshooting

Virtual Circuit (VC) is in Down state

EVPN VPWS protocol has no communication of VC state between endpoints. Furthermore LDP transport LSP is unidirectional and there is no end-to-end checking for connectivity. VC can be up on one end and down on the other end in the following cases:

- Core-facing mpls dataplane down on one side only. For example, if loopback configured with /24 on one-end and configured correctly with /32 at other end.
- UUT has no remote EVPN EAD route from peer. Several variants:
 - Peer never sent it.
 - Peer sent it, but RT mismatch: No intersection between UUT Import-RT and peer Export-RT.
 - Peer sent it, RT matches, but etag mismatch: For service etags tgt/src, UUT has x/y, peer has y/z.

Problem VC is in down state.

Possible Cause None

Solution Perform these steps to check whether the VC is not active:

Solution

- **Solution** Check if any VC is not active.
- **Solution** Identify EVIs that has not got an active VCs
- **Solution** Gather information for the EVIs that has not got an active VCs
- **Solution** Locate the not active VCs for the EVI
- **Solution** Display detail information of the not active VC

Solution

```
show l2vpn evpn vc all detail
EVPN name: vc100, state: up, type: point-to-point
EVPN ID: 100
VPWS Service Instance ID: Source 1, Target 2
Labels: Local 16, Remote 16

// Must have a valid Local Label. If missing, contact support.

// Must have valid Remote Label. If missing, then there is no matching remote route.
Cross-check with BGP: 'show bgp l2vpn evpn [...] detail'.

Next Hop Address: 192.168.0.3

// Must have valid Next Hop Address. If missing, then there is no matching remote route.
Cross-check with BGP: 'show bgp l2vpn evpn [...] detail'.

Associated member Et0/0 is up, status is up

// AC must be up. If not up, check why.

Dataplane:
SSM segment/switch IDs: 4098/4097 (used), PWID: 1
```

```

Rx Counters
  78 input transit packets, 26425 bytes
  0 drops
Tx Counters
  79 output transit packets, 28240 bytes
  0 drops
5 VC FSM state transitions, Last 5 shown
  Prov: Idle -> Prov, Tue Sep 29 13:15:37.848 (00:52:21 ago)
  AdmUp: Prov -> LocWait, Tue Sep 29 13:15:40.287 (00:52:18 ago)
  LocUp: LocWait -> RemWait, Tue Sep 29 13:15:40.287 (00:52:18 ago)
  RemUp: RemWait -> Act, Tue Sep 29 13:17:19.368 (00:50:39 ago)
  DpUp: Act -> Est, Tue Sep 29 13:17:19.371 (00:50:39 ago)

// Pay close attention to last line of VC FSM history. The format is:
// <Event>: <OldState> -> <NewState>
// Troubleshooting info appears below.

```

VC FSM History

Problem The state of the VC is Prov — Provisioned: VC is disabled.

Possible Cause None

Solution Perform these steps for a solution to the state:

- **Solution** Check BGP is running.
- **Solution** Check BGP 'address-family l2vpn evpn' is configured.
- **Solution** Check VC is not shutdown.

Problem The state of the VC is LocWait — Local-Wait: Waiting for local AC information to come up.

Possible Cause None

Solution Check AC is up.

Problem The state of the VC is Act — Activating: Control plane ok. Trying to activate dataplane.

Possible Cause None

- **Solution** Check core facing information is up.
- **Solution** Check Segment-Routing is configured and preferred.

Remote-Wait State

Problem The state of the VC is RemWait — Remote-Wait: Waiting for matching remote route.

Possible Cause This state occurs due to no matching remote route for the VC. A matching remote route means all of the following are true:

- Route is present in BGP. Requires a local EVI to have route target in the route.
- Remote path is best path.
- Route is present in global EVPN route.
- Route is present in EVI route. Requires the EVI to have route target in the route.
- Route has ETag which matches the VC source identity. (**service target <tgt-id> source <src-id>**).

Solution Perform these steps to check whether the VC is in remote wait state:

Solution

- Check for EVI configuration mismatch.
- Check for VC configuration mismatch.
- Check if the remote route is present in BGP.
 - If no remote route then check if
 - remote route was discarded by BGP due to RT filter
 - peer did not send route to UUT
 - EVI or VC configuration mismatch
 - all the prerequisites are satisfied
 - If a remote route is present in global EVPN then check if the remote route is present in EVI route.
 - **Solution** Check for EVI or VC configuration mismatch.

Configuration Examples for EVPN-VPWS Instance

The following example is for configuration for an EVPN-VPWS instance.

Example: EVPN-VPWS Instance Configuration

```
Router(config)#l2vpn evpn instance 11 point-to-point
Router(config-evpn-evi)#rd 1:1
Router(config-evpn-evi)#vpws context test
Router(config-evpn-vpws)#service target 100 source 100
Router(config-evpn-vpws)#member GigabitEthernet0/0/0 service-instance 10
Router(config-evpn-vpws)#no shut
```

The following example has running configurations on PE1 and PE2

Example: EVPN-VPWS PE1 configuration

```
interface Loopback0
 ip address 10.1.1.1 255.255.255.255
 ip ospf 1 area 0
!
interface GigabitEthernet0/0/0
 description CE1 facing
 no ip address
!
service instance 300 ethernet
 encapsulation dot1q 300
 rewrite ingress tag pop 1 symmetric

l2vpn evpn instance 100 point-to-point
!
vpws context vc100
 service target 2 source 1
 member GigabitEthernet0/0/0 service-instance 300
!
interface GigabitEthernet0/0/1
 description Core facing
 ip address 10.0.1.1 255.255.255.0
 ip ospf 1 area 0
 mpls ip
```

```

!
router ospf 1
  router-id 10.1.1.1
!
router bgp 1
  bgp router-id 10.1.1.1
  neighbor 2.2.2.2 remote-as 1
  neighbor 2.2.2.2 update-source Loopback0
!
  address-family ipv4
    neighbor 2.2.2.2 activate
  exit-address-family
!
  address-family l2vpn evpn
    neighbor 2.2.2.2 activate
  exit-address-family
!
l2vpn evpn instance 100 point-to-point
!
vpws context vc100
  service target 2 source 1
  member GigabitEthernet0/0/0
!
mpls ldp router-id Loopback0
!

```

Example: EVPN-VPWS PE2 configuration

```

interface Loopback0
  ip address 2.2.2.2 255.255.255.255
  ip ospf 1 area 0
!
interface GigabitEthernet0/0/0
  description CE2 facing
  no ip address
!
service instance 300 ethernet
  encapsulation dot1q 300
  rewrite ingress tag pop 1 symmetric

  l2vpn evpn instance 100 point-to-point
!
vpws context vc100
  service target 2 source 1
  member GigabitEthernet0/0/0 service-instance 300

interface GigabitEthernet0/0/1
  description Core facing
  ip address 10.0.1.2 255.255.255.0
  ip ospf 1 area 0
  mpls ip
!
router ospf 1
  router-id 2.2.2.2
!
router bgp 1
  bgp router-id 2.2.2.2
  neighbor 10.1.1.1 remote-as 1
  neighbor 10.1.1.1 update-source Loopback0
!
  address-family ipv4
    neighbor 10.1.1.1 activate

```

```

exit-address-family
!
address-family l2vpn evpn
  neighbor 10.1.1.1 activate
exit-address-family
!
l2vpn evpn instance 100 point-to-point
!
vpws context vc100
  service target 1 source 2
  member GigabitEthernet0/0/0
!
mpls ldp router-id Loopback0
!

```

Additional References for EVPN-VPWS

Related Documents

Related Topic	Document Title
Cisco IOS commands	Cisco IOS Master Commands List, All Releases

Standards and RFCs

Standard/RFC	Title
RFC 7432	<i>BGP MPLS-Based Ethernet VPN</i>
Standard	<i>VPWS support in EVPN</i>

MIBs

MIB	MIBs Link
•	—

Technical Assistance

Description	Link
<p>The Cisco Support website provides extensive online resources, including documentation and tools for troubleshooting and resolving technical issues with Cisco products and technologies.</p> <p>To receive security and technical information about your products, you can subscribe to various services, such as the Product Alert Tool (accessed from Field Notices), the Cisco Technical Services Newsletter, and Really Simple Syndication (RSS) Feeds.</p> <p>Access to most tools on the Cisco Support website requires a Cisco.com user ID and password.</p>	<p>http://www.cisco.com/cisco/web/support/index.html</p>