



## E and M Signals over MPLS

---

This chapter provides information about peer-to-peer transport of receive and transmit (E and M) signals and voice data over MPLS on the Cisco ASR 903 Router.

E and M signals and voice data over MPLS are supported on the RSP2 module of the Cisco ASR 902 and ASR 903 routers.

- [E and M Signaling Overview, on page 1](#)
- [Restrictions, on page 1](#)
- [Information About Voice Port Configuration, on page 2](#)
- [How to Configure Analog Voice Ports, on page 6](#)
- [Configuration Examples for E and M, on page 9](#)
- [Verifying E & M Configuration, on page 10](#)
- [Additional References for Configuring E and M Signals , on page 11](#)

## E and M Signaling Overview

E and M signaling defines a trunk circuit side and a signaling unit side for each connection similar to the data circuit-terminating equipment (DCE) and data terminal equipment (DTE) reference type. The analog E and M interface functions as the signaling unit side and it expects the other side to be a trunk circuit.



---

**Note** E and M controller indexes are populated in IfTable, the IfTable is defined in IF-MIB.

---

## Restrictions

- E&M Interface Type IV is not supported on Cisco gateways.
- E&M modules only support CAS in-band signaling.
- E&M controller index in the IfTable does *not* provide the information of the following:
  - Maximum Transmit Unit (MTU)
  - Counters

- The ports 0, 1, 2, and 3 can be configured either in voice or Transmission Only (TO) mode. The combination of voice and TO mode for these set of ports is not supported.
- The ports 4 and 5 can be configured either in voice or TO mode. The combination of voice and TO mode for these set of ports is not supported.

## Information About Voice Port Configuration

The following section provides an overview of voice port configuration.

### Voice Port Configuration Overview

Voice ports are found at the intersections of packet-based networks and traditional telephony networks, and they facilitate the passing of voice and call signals between the two networks. Physically, voice ports connect a router or access server to a line from a circuit-switched telephony device in a PBX or the PSTN.

Basic software configuration for voice ports describes the type of connection being made and the type of signaling to take place over this connection. In addition to the commands for basic configuration, there are also commands that provide fine-tuning for voice quality, enable special features, and specify parameters to match those of proprietary PBXs.

Voice ports on routers and access servers emulate physical telephony switch connections so that voice calls and their associated signaling can be transferred intact between a packet network and a circuit-switched network or device. For a voice call to occur, certain information must be passed between the telephony devices at either end of the call. This information is referred to as signaling. The devices at both ends of the call segment must use the same type of signaling.

The devices in the packet network must be configured to convey signaling information in a way that the circuit-switched network can understand. The devices must also be able to understand signaling information received from the circuit-switched network.

### Telephony Signaling Interfaces

Voice ports on routers and access servers physically connect the router or access server to telephony devices such as telephones, fax machines, PBXs, and PSTN central office (CO) switches. These devices may use any of several types of signaling interfaces to generate information about on-hook status, ringing, and line seizure.

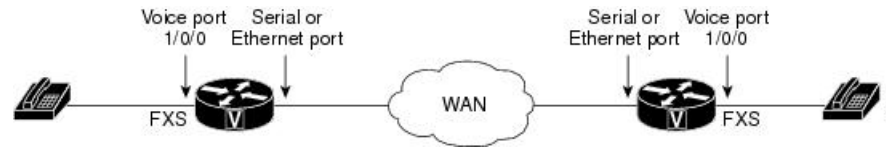
The router's voice-port hardware and software need to be configured to transmit and receive the same type of signaling being used by the device with which they are interfacing so that calls can be exchanged smoothly between the packet network and the circuit-switched network.

The signaling interfaces discussed in this document include foreign exchange office (FXO), foreign exchange station (FXS), and receive and transmit (E&M), which are types of analog interfaces. Some digital connections emulate FXO, FXS, and E&M interfaces, and they are discussed in "FXS and FXO Interfaces" and the *E and M Interfaces* section. It is important to know which signaling method the telephony side of the connection is using, and to match the router configuration and voice interface hardware to that signaling method.

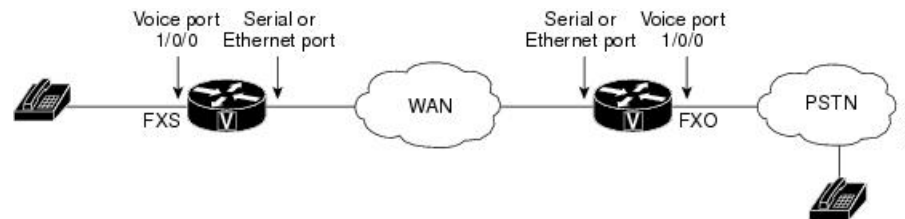
The next three illustrations show how the different signaling interfaces are associated with different uses of voice ports. In the "FXS Signaling Interfaces" figure, FXS signaling is used for end-user telephony equipment, such as a telephone or fax machine. The "FXS and FXO Signaling Interfaces" figure shows an FXS connection to a telephone and an FXO connection to the PSTN at the far side of a WAN; this might be a telephone at a

local office going over a WAN to a router at headquarters that connects to the PSTN. In the "E&M Signaling Interfaces" figure, two PBXs are connected across a WAN by E&M interfaces. This illustrates the path over a WAN between two geographically separated offices in the same company.

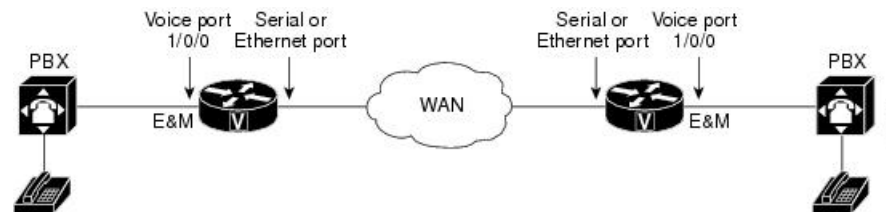
**Figure 1: FXS Signaling Interfaces**



**Figure 2: FXS and FXO Signaling Interfaces**



**Figure 3: E and M Signaling Interfaces**



## E and M Interfaces

Trunk circuits connect telephone switches to one another; they do not connect end-user equipment to the network. The most common form of analog trunk circuit is the E&M interface, which uses special signaling paths that are separate from the trunk's audio path to convey information about the calls. The signaling paths are known as the *E-lead* and the *M-lead*. The name *E&M* is thought to derive from the phrase *Ear* and *Mouth* or *rEceive* and *transMit* although it could also come from *Earth* and *Magnet*. The history of these names dates back to the days of telegraphy, when the CO side had a key that grounded the E circuit, and the other side had a sounder with an electromagnet attached to a battery. Descriptions such as *Ear* and *Mouth* were adopted to help field personnel determine the direction of a signal in a wire. E&M connections from routers to telephone switches or to PBXs are preferable to FXS/FXO connections because E&M provides better answer and disconnect supervision.

Like a serial port, an E&M interface has a data terminal equipment/data communications equipment (DTE/DCE) type of reference. In telecommunications, the *trunking* side is similar to the DCE, and is usually associated with CO functionality. The router acts as this side of the interface. The other side is referred to as the *signaling* side, like a DTE, and is usually a device such as a PBX. Five distinct physical configurations for the signaling part of the interface (Types I-V) use different methods to signal on-hook/off-hook status, as shown in the table below. Cisco voice implementation supports E&M Types I, II, III, and V.

Table 1: EandM Wiring and Signaling Methods

E&M Type	E-Lead Configuration	M-Lead Configuration	Signal Battery Lead Configuration	Signal Ground Lead Configuration
I	Output, relay to ground	Input, referenced to ground	--	--
II	Output, relay to SG	Input, referenced to ground	Feed for M, connected to -48V	Return for E, galvanically isolated from ground
III	Output, relay to ground	Input, referenced to ground	Connected to -48V	Connected to ground
V	Output, relay to ground	Input, referenced to -48V	--	--

The physical E&M interface is an RJ-48 connector that connects to PBX trunk lines, which are classified as either two-wire or four-wire. This refers to whether the audio path is full duplex on one pair of wires (two-wire) or on two pair of wires (four-wire). A connection may be called a four-wire E&M circuit although it actually has six to eight physical wires. It is an analog connection although an analog E&M circuit may be emulated on a digital line. For more information on digital voice port configuration of E&M signaling, see the "DS0 Groups on Digital T1/E1 Voice Ports" section in the "Configuring Digital Voice Ports" chapter .

PBXs built by different manufacturers can indicate on-hook/off-hook status and telephone line seizure on the E&M interface by using any of the following three types of access signaling:

- Immediate-start is the simplest method of E&M access signaling. The calling side seizes the line by going off-hook on its E-lead and sends address information as dual-tone multifrequency (DTMF) digits (or as dialed pulses on Cisco 2600 and Cisco 3600 series routers) following a short, fixed-length pause.
- Wink-start is the most commonly used method for E&M access signaling, and is the default for E&M voice ports. Wink-start was developed to minimize glare, a condition found in immediate-start E&M, in which both ends attempt to seize a trunk at the same time. In wink-start, the calling side seizes the line by going off-hook on its E-lead, then waits for a short temporary off-hook pulse, or "wink," from the other end on its M-lead before sending address information. The switch interprets the pulse as an indication to proceed and then sends the dialed digits as DTMF or dialed pulses.
- In delay-dial signaling, the calling station seizes the line by going off-hook on its E-lead. After a timed interval, the calling side looks at the status of the called side. If the called side is on-hook, the calling side starts sending information as DTMF digits; otherwise, the calling side waits until the called side goes on-hook and then starts sending address information.

## E and M Interface Transmission Only

In Transmission Only (TO) mode configuration, CESoP is configured without CAS support to transport voice data using T1/E1CESoP PW. Field Programmable Gate Arrays (FPGA) configures the port to Transmission Only and port is always on off-hook mode.

In this mode, signaling is not expected to provide through router.

## E and M Signaling

Start dial supervision is the line protocol that defines how the equipment seizes the E&M trunk and passes the address signaling information such as dual tone multifrequency (DTMF) digits. There are three main techniques used for E&M start dial signaling:

- Immediate Start—This is the most basic protocol. In this technique, the originating switch goes off-hook, waits for a finite period of time (for example, 200 ms), then sends the dial digits to the far end.
- Wink Start—Wink is the most commonly used protocol. In this technique, the originating switch goes off-hook, waits for a temporary off-hook pulse from the other end (which is interpreted as an indication to proceed), then sends the dial digits.
- Delay Dial—In this technique, the originating side goes off-hook and waits for about 200 ms, then checks to see if the far end is on-hook. If the far end is on-hook, it then outputs dial digits. If the far end is off-hook, it waits until it goes on-hook, then outputs dial digits.

## Codec Complexity for Analog Voice Ports

The term *codec* stands for *coder-decoder*. A codec is a particular method of transforming analog voice into a digital bit stream (and vice versa) and also refers to the type of compression used. Several different codecs have been developed to perform these functions, and each one is known by the number of the International Telecommunication Union-Telecommunication Standardization Sector (ITU-T) standard in which it is defined. The various codecs use different algorithms to encode analog voice into digital bit-streams and have different bit rates, frame sizes, and coding delays associated with them. The codecs also differ in the type of perceived voice quality they achieve.

Select the same type of codec as the one that is used at the other end of the call. For instance, if a call was coded with a G.711 codec, it must be decoded with a G.711 codec.

## Circuit Emulation Service Overview

Circuit Emulation (CEM) is a technology that provides a protocol-independent transport over IP Networks. It enables proprietary or legacy applications to be carried transparently to the destination, similar to a leased line.

The Cisco ASR 903 Series Router E & M IM supports pseudowire types that utilize CEM transport, Circuit Emulation Service over Packet-Switched Network in T1 and E1 modes to transport Analog Signals and Voice traffic over MPLS.

The voice port interfaces that connect the router or access server to E & M lines pass voice data and signaling between the packet network and the Analog-circuit-switched network.

For more information about the Circuit Emulation Service over Packet-Switched Network on Cisco ASR 903 Series Router, see Chapter 16 Configuring Pseudowire.

## CAS Overview

Channel Associated Signaling (CAS) is also referred to as Robbed Bit Signaling. In this type of signaling, the least significant bit of information in a T1 signal is "robbed" from the channels that carry voice and is used to transmit framing and clocking information. This is sometimes called "in-band" signaling. CAS is a method of signaling each traffic channel rather than having a dedicated signaling channel (like ISDN). In

other words, the signaling for a particular traffic circuit is permanently associated with that circuit. The most common forms of CAS signaling are loop-start, ground-start, Equal Access North American (EANA), and E&M. In addition to receiving and placing calls, CAS signaling also processes the receipt of Dialed Number Identification Service (DNIS) and Automatic Number Identification (ANI) information, which is used to support authentication and other functions.

Each T1 channel carries a sequence of frames. These frames consist of 192 bits and an additional bit designated as the framing bit, for a total of 193 bits per frame. Super Frame (SF) groups twelve of these 193-bit frames together and designates the framing bits of the even-numbered frames as signaling bits. CAS looks specifically at every sixth frame for the time slot's or channel's associated signaling information. These bits are commonly referred to as A- and B-bits. Extended Super Frame (ESF), due to grouping the frames in sets of twenty-four, has four signaling bits per channel or time slot. These occur in frames 6, 12, 18, and 24 and are called the A-, B-, C-, and D-bits respectively.

The biggest disadvantage of CAS signaling is its use of user bandwidth in order to perform signaling functions.

#### Ear and Mouth Type Transmission Only

The Ear and Mouth (ENM) TO mode configuration supports CESoP without CAS configuration to transport data using T1 or E1 CESoP pseudowire. The CESoP is configured without signaling.

## How to Configure Analog Voice Ports

### Configuring CEM Group and Parameters on Analog E and M Voice Ports

Perform this task to configure cem group and basic parameters:

---

#### Step 1 **enable**

##### Example:

```
Router> enable
```

Enables privileged EXEC mode.

- Enter your password if prompted.

#### Step 2 **configure terminal**

##### Example:

```
Router# configure terminal
```

Enters global configuration mode.

#### Step 3 **controller voice-port slot / subslot / port**

##### Example:

```
voice-port slot/subslot/port
```

##### Example:

```
Router(config)# controller voice-port 1/0/0
```

Enters voice-port configuration mode.

**Note** The **show voice port summary** command enters into the controller for further parameter configuration.

**Step 4** **cem-group** *group-number timeslots timeslot*

**Example:**

```
Router(config-controller)# cem-group 0 timeslots 1
```

Configures cem-group with group number 0 in CESoP with speed (DS0).

**Note** The group number is always 0. The timeslot is always 1.

**Step 5** **compand-type** *a-law | u-law*

**Example:**

```
Router(config-controller)# compand-type u-law|a-law
```

Specifies the PCM encoding configuration for voice port.

- The default for E1 is **a-law**.
- The default for T1 is **u-law**.

**Step 6** **signal** *wink-start | immediate-start | delay-dial*

**Example:**

```
Router(config-controller)# signal immediate-start
```

Specifies the options of signaling type configuration.

- The default signaling type is **wink-start**.

**Step 7** **type** *1 | 2 | 3 | 5 | TO*

**Example:**

```
Router(config-controller)# type 2
```

Specifies the type of E&M interface to which this voice port is connecting in TO mode. See Table 2 in the "Voice Port Configuration Overview" chapter for an explanation of E&M types.

- The default is **1**.

In type TO, CEoP is configured without CAS type.

**Step 8** **operation** *2-wire | 4-wire*

**Example:**

```
Router(config-controller)# operation 4-wire
```

Specifies the number of wires used for voice transmission at this interface (the audio path only, not the signaling path).

- The default is **2-wire**.

**Step 9**     **impedance 600r | complex1 | complex2 | complex3**

**Example:**

```
Router(config-controller)# impedance complex1
```

Specifies the impedance depending upon the operation selected.

**Note**     The options for operations are:

- Option for operation 4-wire: 600r
- Option for operation 2-wire: 600r, complex1, complex2, complex3

The default impedance is **600r**.

**Step 10**    **exit**

**Example:**

```
Router(config-controller)# exit
```

Exits controller configuration mode and returns to privileged EXEC mode.

## Configuring CEM Group with Cross Connect

The following section describes how to configure a CEM group on the Cisco ASR 903 Series Router.

### SUMMARY STEPS

1. **enable**
2. **configure terminal**
3. **interface cem slotbay /port**
4. **cem number**
5. **xconnect router-id vcid encapsulation mpls**
6. **exit**

### DETAILED STEPS

	Command or Action	Purpose
<b>Step 1</b>	<b>enable</b> <b>Example:</b>  Router> enable	Enables privileged EXEC mode.  • Enter your password if prompted.
<b>Step 2</b>	<b>configure terminal</b> <b>Example:</b>	Enters global configuration mode.



	Command or Action	Purpose
	Router# <code>configure terminal</code>	
<b>Step 3</b>	<b>interface cem slot/bay/port</b> <b>Example:</b>  Router(config)# <code>int cem slot/bay/port</code>	To specify the slot number, bay number or port number to be configured.
<b>Step 4</b>	<b>cem number</b> <b>Example:</b>  Router(config-if)# <code>cem 0</code>	CEM number is always 0.
<b>Step 5</b>	<b>xconnect router-id vcid encapsulation mpls</b> <b>Example:</b>  Router(config-if)# <code>xconnect 1.1.1.1 40 encapsulation mpls</code>	To configure xconnect with other end using router-ID, VCID and encapsulation as MPLS.
<b>Step 6</b>	<b>exit</b> <b>Example:</b>  Router(config-if)# <code>exit</code>	Exits configuration mode and returns to privileged EXEC mode.

## Configuration Examples for E and M

This section provides examples for configuring E&M over MPLS

### Example: Configuring E&M Controller

The following example shows how to configure voice port interface.

```
Router> enable
Router# configure terminal
Router(config)# controller voice-port 0/1/4
Router(config-controller)# cem-group 0 timeslots 1
Router(config-controller)# compand a-law
Router(config-controller)# signal immediate
Router(config-controller)# type 5
Router(config-controller)# operation 4-wire
Router(config-controller)# exit
```

### Example: Configuring Xconnect

The following example shows how to configure xconnect.

```
Router> enable
Router# configure terminal
Router(config)# interface CEM0/1/0
Router(config-if)# cem 0
```

```
Router(config-if-cem)# xconnect 1.1.1.1 1 encapsulation mpls
Router(config-if-cem-xconn)# end
```

## Verifying E & M Configuration

The following show commands you can use to verify the E and M configuration.

- **show controllers voice-port:** This command shows how to configure voice port interface.

```
Router# show controllers voice-port 0/3/0
```

```
voice-port 0/3/0 - (A900-IMA6EM) is up
Encapsulation : None
Type          : Type I
Operation     : 2-Wire
Signalling    : wink-start
Companding    : u-law
```

- **show interface cem:** This command shows how to configure CEM.

```
Router# show interface CEM0/3/0
```

```
CEM0/3/0 is up, line protocol is up
Hardware is Circuit Emulation Interface
MTU 1500 bytes, BW 64 Kbit/sec, DLY 0 usec,
    reliability 255/255, txload 1/255, rxload 1/255
Encapsulation CEM, loopback not set
Keepalive not supported
Last input never, output never, output hang never
Last clearing of "show interface" counters never
Input queue: 0/375/0/0 (size/max/drops/flushes); Total output drops: 0
Queueing strategy: fifo
Output queue: 0/0 (size/max)
5 minute input rate 0 bits/sec, 0 packets/sec
5 minute output rate 0 bits/sec, 0 packets/sec
  0 packets input, 0 bytes, 0 no buffer
  Received 0 broadcasts (0 IP multicasts)
  0 runts, 0 giants, 0 throttles
  0 input errors, 0 CRC, 0 frame, 0 overrun, 0 ignored, 0 abort
  0 packets output, 0 bytes, 0 underruns
  0 output errors, 0 collisions, 0 interface resets
  0 unknown protocol drops
  0 output buffer failures, 0 output buffers swapped out
```

- **show cem circuit:** This command shows how to configure CEM circuit.

```
Router# show cem circuit 0
```

```
CEM0/3/0, ID: 0, Line: UP, Admin: UP, Ckt: ACTIVE
Controller state: up, T1/E1 state: up
Idle Pattern: 0xFF, Idle CAS: 0x8
Dejitter: 8 (In use: 0)
Payload Size: 32
Framing: Framed (DS0 channels: 1)
CEM Defects Set
None
```

```
Signalling: No CAS
RTP: No RTP
```

```
Ingress Pkts:      0                      Dropped:          0
```

```

Egress Pkts:      0                               Dropped:      0

CEM Counter Details
Input Errors:    0                               Output Errors: 0
Pkts Missing:   0                               Pkts Reordered: 0
Misorder Drops: 0                               JitterBuf Underrun: 0
Error Sec:      0                               Severly Errored Sec: 0
Unavailable Sec: 0                             Failure Counts: 0
Pkts Malformed: 0                             JitterBuf Overrun: 0

```

- **show xconnect all:** This command shows the output of xconnect command.

```
Router# show xconnect all
```

```

Legend:      XC ST=Xconnect State  S1=Segment1 State  S2=Segment2 State
             UP=Up                DN=Down            AD=Admin Down      IA=Inactive
             SB=Standby           HS=Hot Standby    RV=Recovering     NH=No Hardware

```

```

XC ST Segment 1          S1 Segment 2          S2
-----+-----+-----+-----+-----+-----+-----+-----+-----+-----+-----+-----+
UP pri ac CE0/3/0:0 (CESoPSN Basic)  UP mpls 1.1.1.1:1      UP
UP pri ac CE0/3/1:0 (CESoPSN Basic)  UP mpls 1.1.1.1:2      UP
UP pri ac CE0/3/2:0 (CESoPSN Basic)  UP mpls 1.1.1.1:3      UP
UP pri ac CE0/3/3:0 (CESoPSN Basic)  UP mpls 1.1.1.1:4      UP
UP pri ac CE0/3/4:0 (CESoPSN Basic)  UP mpls 1.1.1.1:5      UP
UP pri ac CE0/3/5:0 (CESoPSN Basic)  UP mpls 1.1.1.1:6      UP

```

- **show ip int brief:** This command shows the usability status of interfaces configured for IP.

```
Router# show ip int brief
```

```

Interface          IP-Address      OK? Method Status      Protocol
GigabitEthernet0/4/0 123.123.123.2  YES NVRAM  up          up
GigabitEthernet0    7.19.15.129    YES NVRAM  up          up
CEM0/3/0            unassigned     YES unset  up          up
CEM0/3/1            unassigned     YES unset  up          up
CEM0/3/2            unassigned     YES unset  up          up
CEM0/3/3            unassigned     YES unset  up          up
CEM0/3/4            unassigned     YES unset  up          up
CEM0/3/5            unassigned     YES unset  up          up

```

## Additional References for Configuring E and M Signals

### Related Documents

Related Topic	Document Title
Cisco IOS commands	<a href="#">Cisco IOS Master Commands List, All Releases</a>

### Standards and RFCs

Standard/RFC	Title
—	<i>There are no standards and RFCs for this feature.</i>

**MIBs**

<b>MIB</b>	<b>MIBs Link</b>
IF-MIB	To locate and download MIBs for selected platforms, Cisco IOS releases, and feature sets, use Cisco MIB Locator found at the following URL: <a href="http://www.cisco.com/go/mibs">http://www.cisco.com/go/mibs</a>

**Technical Assistance**

<b>Description</b>	<b>Link</b>
<p>The Cisco Support website provides extensive online resources, including documentation and tools for troubleshooting and resolving technical issues with Cisco products and technologies.</p> <p>To receive security and technical information about your products, you can subscribe to various services, such as the Product Alert Tool (accessed from Field Notices), the Cisco Technical Services Newsletter, and Really Simple Syndication (RSS) Feeds.</p> <p>Access to most tools on the Cisco Support website requires a Cisco.com user ID and password.</p>	<a href="http://www.cisco.com/cisco/web/support/index.html">http://www.cisco.com/cisco/web/support/index.html</a>