



# Configuring Subscriber Features

Subscriber features that are configured on BNG enable service providers to deploy certain specific functionalities like restricting the use of certain network resources, allowing Law Enforcement Agencies (LEAs) to conduct electronic surveillance, providing multicast services to the subscriber, and so on.

**Table 1: Feature History for Configuring Subscriber Features**

| Release       | Modification   |
|---------------|--|
| Release 6.0.1 | Added activating IPv6 router advertisement on an IPv4 subscriber interface enhancements  |
| Release 6.0.1 | Added Linking to Subscriber Traffic in a Shared Policy Instance Group feature  |
| Release 6.2.1 | These new features were introduced: <ul style="list-style-type: none"><li>• IGMP QoS Correlation for IPoE Subscribers</li><li>• SNMP Lawful Intercept Using Circuit-Id</li><li>• Controlling Subscriber Plans Using Protocol Options</li></ul>             |
| Release 6.3.1 | Added HTTP Redirect URL with Subscriber Information feature.   |
| Release 6.5.1 | These new features were introduced: <ul style="list-style-type: none"><li>• HTTP-Redirect Support for Static sessions</li><li>• HTTP Header Enrichment for BNG Subscribers</li></ul>   |
| Release 6.6.3 | Introduced these new features: <ul style="list-style-type: none"><li>• Header enrichment on pseduowire headend with subscriber redundancy group support.</li><li>• HTTP redirect on pseduowire headend with subscriber redundancy group support.</li></ul> |
| Release 7.0.1 | Introduced egress Lawful Intercept (LI) functionality over Pseudowire Headend subscriber interfaces.   |

| Release       | Modification   |
|---------------|--|
| Release 7.3.1 | Added BNG support on Cisco ASR 9000 5th Generation line cards. |

The subscriber features covered in this chapter are:

- [Access Control List and Access Control List-based Forwarding, on page 2](#)
- [Excessive Punt Flow Trap \(Deprecated\) , on page 6](#)
- [Support for Lawful Intercept, on page 6](#)
- [TCP MSS Adjustment for BNG, on page 15](#)
- [Linking to Subscriber Traffic in a Shared Policy Instance Group, on page 19](#)
- [Subscriber Session on Ambiguous VLANs , on page 20](#)
- [uRPF, on page 26](#)
- [Multicast Services, on page 26](#)
- [DAPS Support, on page 40](#)
- [HTTP Redirect Using PBR, on page 53](#)
- [HTTP-Redirect Support for Static Sessions, on page 70](#)
- [HTTP Header Enrichment for BNG Subscribers, on page 73](#)
- [Idle Timeout for IPoE and PPPoE Sessions, on page 78](#)
- [Routing Support on Subscriber Sessions , on page 78](#)
- [Traffic Mirroring on Subscriber Session, on page 80](#)
- [Randomization of Interim Timeout of Sessions or Services, on page 83](#)
- [Controlling Subscriber Plans Using Protocol Options, on page 83](#)
- [Additional References, on page 85](#)

## Access Control List and Access Control List-based Forwarding

An Access Control List (ACL) is used to define access rights for a subscriber. It is also used for filtering content, blocking access to various network resources, and so on.

Certain service providers need to route certain traffic be routed through specific paths, instead of using the path computed by routing protocols. For example, a service provider may require that voice traffic traverse through certain expensive routes, but data traffic to use the regular routing path. This is achieved by specifying the next-hop address in the ACL configuration, which is then used for forwarding packet towards its destination. This feature of using ACL for packet forwarding is called ACL-based Forwarding (ABF).

The ACL is defined through CLI or XML; however, it can be applied to a subscriber session either through a dynamic-template, or through VSAs from RADIUS. Deploying ABF (using ACL) involves these stages:

- Defining an ACL, see [Configuring Access-Control Lists, on page 3](#).
- Applying the ACL to an access-interface, see [Activating ACL, on page 4](#).



**Note** ACL is not supported for LAC sessions.

## Configuring Access-Control Lists

Perform this task to create an access control list. As an example, this access list is created to deploy ABF; therefore, it defines the next hop address.

### SUMMARY STEPS

1. **configure**
2. **{ipv4 | ipv6} access-list access-list-name**
3. **sequence-number permit tcp any any**
4. **sequence-number permit {ipv4 | ipv6} host source\_address nexthop source\_address destination\_address**
5. Use the **commit** or **end** command.

### DETAILED STEPS

| Procedure |   |   |
|-----------|---|---|
|           | Command or Action   | Purpose   |
| Step 1    | <b>configure</b><br><b>Example:</b><br>RP/0/RSP0/CPU0:router# configure   | Enters global configuration mode.   |
| Step 2    | <b>{ipv4   ipv6} access-list access-list-name</b><br><b>Example:</b><br>RP/0/RSP0/CPU0:router(config)# ipv4 access-list foo_in<br>or<br>RP/0/RSP0/CPU0:router(config)# ipv6 access-list foo_in                            | Configures the access-list.   |
| Step 3    | <b>sequence-number permit tcp any any</b><br><b>Example:</b><br>RP/0/RSP0/CPU0:router(config)# 10 permit tcp any any  | Enters an access control list rule to tcp traffic.  |
| Step 4    | <b>sequence-number permit {ipv4   ipv6} host source_address nexthop source_address destination_address</b><br><b>Example:</b><br>RP/0/RSP0/CPU0:router(config)# 10 permit ipv4 host 9.8.8.9 nexthop 6.6.6.6 7.7.7.7<br>or | Specifies packets to forward on ipv4 protocol from source IP address to destination IP address.<br><b>Note</b><br>Repeat steps 1 to 4 to configure the foo_out access-list. |

|               | Command or Action  | Purpose   |
|---------------|--|---|
|               | RP/0/RSP0/CPU0:router(config)# 10 permit ipv6 host 192:2:1:9 nexthop 192:2:6:8 |   |
| <b>Step 5</b> | Use the <b>commit</b> or <b>end</b> command.                                   | <p><b>commit</b> —Saves the configuration changes and remains within the configuration session.</p> <p><b>end</b> —Prompts user to take one of these actions:</p> <ul style="list-style-type: none"> <li>• <b>Yes</b> — Saves configuration changes and exits the configuration session.</li> <li>• <b>No</b> —Exits the configuration session without committing the configuration changes.</li> <li>• <b>Cancel</b> —Remains in the configuration session, without committing the configuration changes.</li> </ul> |

### Configuring Access-Control Lists: Examples

```
//For IPv4
configure
ipv4 access-list foo_in
10 permit tcp any any
10 permit ipv4 host 9.8.8.9 nexthop 6.6.6.6 7.7.7.7
!
!
end

//For IPv6
configure
ipv6 access-list foo_in
10 permit tcp any any
10 permit ipv4 host 192:2:1:9 nexthop 192:2:6:8
!
!
end
```

## Activating ACL

Perform this task to define a dynamic-template that is used to activate an access-control list.

### SUMMARY STEPS

1. **configure**
2. **dynamic-template**
3. **type**{**ipsubscriber** |**ppp** |**service**} *dynamic-template-name*
4. {**ipv4** | **ipv6**} **access-group** *access-list-name* **ingress**
5. Use the **commit** or **end** command.

## DETAILED STEPS

## Procedure

|               | Command or Action   | Purpose  |
|---------------|---|--|
| <b>Step 1</b> | <b>configure</b><br><b>Example:</b><br>RP/0/RSP0/CPU0:router# configure   | Enters global configuration mode.  |
| <b>Step 2</b> | <b>dynamic-template</b><br><b>Example:</b><br>RP/0/RSP0/CPU0:router(config)# dynamic-template   | Enters the dynamic-template configuration mode.  |
| <b>Step 3</b> | <b>type{ipsubscriber   ppp   service}</b><br><i>dynamic-template-name</i><br><b>Example:</b><br>RP/0/RSP0/CPU0:router(config-dynamic-template)# type<br>service foo   | Creates a service dynamic-template type.   |
| <b>Step 4</b> | <b>{ipv4   ipv6} access-group access-list-name ingress</b><br><b>Example:</b><br>RP/0/RSP0/CPU0:router(config-dynamic-template-type)# ipv4<br>access-group foo_in ingress<br>or<br>RP/0/RSP0/CPU0:router(config-dynamic-template-type)# ipv6<br>access-group foo_in ingress | Specifies access-control for the incoming packets.<br><b>Note</b><br>Similarly, create another access-group for the outgoing packets called foo_out.   |
| <b>Step 5</b> | Use the <b>commit</b> or <b>end</b> command.  | <b>commit</b> —Saves the configuration changes and remains within the configuration session.<br><b>end</b> —Prompts user to take one of these actions: <ul style="list-style-type: none"> <li>• <b>Yes</b> — Saves configuration changes and exits the configuration session.</li> <li>• <b>No</b> —Exits the configuration session without committing the configuration changes.</li> <li>• <b>Cancel</b> —Remains in the configuration session, without committing the configuration changes.</li> </ul> |

## Activating ACL: Examples

//For IPv4

```

configure
dynamic-template
type service foo
ipv4 access-group foo_in ingress
!
!
end

//For IPv6
configure
dynamic-template
type service foo
ipv6 access-group foo_in ingress
!
!
end

```

## Excessive Punt Flow Trap (Deprecated)

**Table 2: Feature History Table**

| Feature Name                                  | Release Information | Feature Description   |
|---|---------------------|---|
| Excessive Punt Flow Trap (Feature Deprecated) | Release 7.3.1       | This feature is deprecated starting IOS XR Release 7.3.1. To control user or subscriber traffic manually, we recommend you to use <a href="#">Access Control List and Access Control List-based Forwarding</a> , on page 2, <a href="#">Flow Aware QoS</a> , or <a href="#">enable policing through MQC</a> . |

## Support for Lawful Intercept

Lawful Intercept allows Law Enforcement Agencies (LEAs) to conduct electronic surveillance as authorized by judicial or administrative order. Increasingly, legislation is being adopted and regulations are being enforced that require service providers (SPs) and Internet service providers (ISPs) to implement their networks to explicitly support authorized electronic surveillance. The types of SPs or ISPs that are subject to Lawful Intercept mandates vary greatly from country to country. Lawful Intercept compliance in the United States is specified by the Communications Assistance for Law Enforcement Act (CALEA).

Cisco ASR 9000 Series Router supports the Cisco Service Independent Intercept (SII) architecture and PacketCable™<sup>1</sup> Lawful Intercept architecture. The Lawful Intercept components by themselves do not ensure customer compliance with applicable regulations but rather provide tools that can be used by SPs and ISPs to construct an Lawful Intercept compliant network.

BNG supports the [Per-session Lawful Intercept](#) and [RADIUS-based Lawful Intercept](#) for subscribers. Both, per-session and radius-based lawful intercepts are executed on IPoE, PPPoE, and PPPoE LAC subscriber sessions in BNG.

<sup>1</sup> PacketCable™ architecture addresses device interoperability and product compliance issues using the PacketCable™ Specifications.

**Caution**

This guide does not address legal obligations for the implementation of lawful intercept. Service providers are responsible for ensuring that network complies with applicable lawful intercept statutes and regulations. It is recommended that legal advice be sought to determine obligations.

**Note**

By default, Lawful Intercept is not a part of the Cisco IOS XR software. To enable Lawful Intercept, you must install and activate the **asr9k-li-px.pie**.

From Cisco IOS XR Software Release 7.0.1 onwards, the Egress Lawful Intercept feature on BNG supports pseudowire headend (PWHE) subscriber sessions as well

For more information about Lawful Intercept-related router configuration, see *Implementing Lawful Intercept* chapter in *Cisco ASR 9000 Series Aggregation Services Router System Security Configuration Guide*.

Maximum supported Lawful Intercept scale depends on the number of Network Processors (NP) on a line card. For example,

- Line cards with one or two NPs: 511 sessions per line card.
- Line cards with more than two NPs: 1024 divided by the number of NPs on the line card.

You can verify the number of NPs on a line card using the **show controllers np summary all location <location>** command.

## Per-session Lawful Intercept

Lawful interception of all Layer 2 or Layer 3 traffic on a specified subscriber interface, on both ingress as well egress directions, and sending the replicated stream to mediation device, is called the per-session Lawful Intercept. This Lawful Intercept implements IPv4, IPv6, and multicast traffic interception using the Cisco-defined MIBs. By default, the SNMP-based Lawful Intercept feature is enabled on the Cisco ASR 9000 Series Router, which allows you to configure the taps. For more information about disabling SNMP-based Lawful Intercept, see [Disabling SNMP-based Lawful Intercept, on page 8](#).

The subscriber session is identified by Account-session-ID, which acts as a key in identifying the specified subscriber interface for the subscriber user, whose traffic is getting intercepted.

Lawful Intercept, in general, can be implemented using either SII architecture or PacketCable™ specifications. The Cisco IOS-XR implementation of SNMP-based Lawful Intercept is based on service-independent intercept (SII) architecture. SNMPv3 authenticates data origin and ensures that the connection from Cisco ASR 9000 Series Router to the mediation device is secure. This ensures that unauthorized parties cannot forge an intercept target.



**Note** To implement lawful intercept, you must understand how the SNMP server functions. For this reason, carefully review the information described in the module *Implementing SNMP* in *System Management Configuration Guide for Cisco ASR 9000 Series Routers*.

Lawful intercept must be explicitly disabled. It is automatically enabled on a provisioned router after installing and activating the **asr9k-li-px.pie**. However, you should not disable LI if there is an active tap in progress, because this deletes the tap.

Management plane must be configured to enable SNMPv3. Allows the management plane to accept SNMP commands, so that the commands go to the interface (preferably, a loopback) on the router. This allows the mediation device (MD) to communicate with a physical interface. For more information about Management Plane Protection feature, see [Configuring the Inband Management Plane Protection Feature, on page 9](#) and for more information about enabling the mediation device, see [Enabling the Mediation Device to Intercept VoIP and Data Sessions, on page 9](#).

### Lawful Intercept MIBs

An external mediation device also known as collectors can create IPv4 or IPv6 address based TAPs using IP-TAP-MIB. The SNMPv3 protocol is used to provision the mediation device (defined by CISCO-TAP2-MIB) and the Taps(defined by CISCO-USER-CONNECTION-TAP-MIB). The Cisco ASR 9000 Series Router supports a total of 511 concurrent taps that includes both SNMP and Radius.

Lawful intercept uses these MIBs for interception:

- **CISCO-TAP2-MIB**—Used for lawful intercept processing. It contains SNMP management objects that control lawful intercepts on a Cisco ASR 9000 Series Router. The mediation device uses the MIB to configure and run lawful intercepts on targets sending traffic through the Cisco ASR 9000 Series Router. The CISCO-TAP2-MIB supports the SII feature and defines the provisioning of the mediation devices and generic Taps. It primarily consists of the mediation device table and a stream table. The mediation device table contains information about mediation devices with which the Cisco ASR 9000 Series Router communicates; for example, the device's address, the interfaces to send intercepted traffic over, and the protocol to use to transmit the intercepted traffic. The stream table contains a list of generic Taps that are provisioned by the MD table entries.
- **CISCO-USER-CONNECTION-TAP-MIB**—Used for intercepting traffic for individual subscribers. The MIB contains SNMP management objects to configure and execute wiretaps on individual user connections on the Cisco ASR 9000 Series Router. This MIB contains information about the user connections, each identified by a unique session ID. The CISCO-USER-CONNECTION-TAP-MIB cannot be configured without configuring the CISCO-TAP2-MIB.



**Note** It is not possible to configure an SNMP tap and a Radius tap at the same time. Also, the same session cannot be tapped more than once at a time.

## Disabling SNMP-based Lawful Intercept

Lawful Intercept is enabled by default on the Cisco ASR 9000 Series Router after installing and activating the **asr9k-li-px.pie**.

- To disable Lawful Intercept, enter the **lawful-intercept disable** command in global configuration mode.



- To re-enable it, use the **no** form of this command.

### Disabling SNMP-based Lawful Intercept: An example

```
RP/0/RSP0/CPU0:router# configure
RP/0/RSP0/CPU0:router(config)# lawful-intercept disable
```



**Note** The **lawful-intercept disable** command is available only after installing and activating the **asr9k-li-px.pie**.

All SNMP-based taps are dropped when lawful intercept is disabled.

## Configuring the Inband Management Plane Protection Feature

If MPP was not earlier configured to work with another protocol, then ensure that the MPP feature is also not configured to enable the SNMP server to communicate with the mediation device for lawful interception. In such cases, MPP must be configured specifically as an inband interface to allow SNMP commands to be accepted by the router, using a specified interface or all interfaces.



**Note** Ensure this task is performed, even if you have recently migrated to Cisco IOS XR Software from Cisco IOS, and you had MPP configured for a given protocol.

For lawful intercept, a loopback interface is often the choice for SNMP messages. If you choose this interface type, you must include it in your inband management configuration.

## Enabling the Mediation Device to Intercept VoIP and Data Sessions

These SNMP server configuration tasks enable the Cisco SII feature on a router running Cisco IOS XR Software by allowing the MD to intercept VoIP or data sessions.

### SUMMARY STEPS

1. **configure**
2. **snmp-server view** *view-name* **ciscoTap2MIB** **included**
3. **snmp-server view** *view-name* **ciscoUserConnectionTapMIB** **included**
4. **snmp-server group** *group-name* **v3auth read** *view-name* **write** *view-name* **notify** *view-name*
5. **snmp-server host** *ip-address* **traps version 3 auth** *username* **udp-port** *port-number*
6. **snmp-server user** *mduser-id* *groupname* **v3 auth md5** *md-password*
7. Use the **commit** or **end** command.
8. **show snmp users**
9. **show snmp group**
10. **show snmp view**

## DETAILED STEPS

## Procedure

|               | Command or Action   | Purpose  |
|---------------|---|--|
| <b>Step 1</b> | <b>configure</b><br><b>Example:</b><br><pre>RP/0/RSP0/CPU0:router# configure</pre>  | Enters global configuration mode.  |
| <b>Step 2</b> | <b>snmp-server view <i>view-name</i> ciscoTap2MIB included</b><br><b>Example:</b><br><pre>RP/0//CPU0:router(config)# snmp-server view TapName ciscoTap2MIB included</pre>   | Creates or modifies a view record and includes the CISCO-TAP2-MIB family in the view. The SNMP management objects in the CISCO-TAP2-MIB that controls lawful intercepts are included. This MIB is used by the mediation device to configure and run lawful intercepts on targets sending traffic through the router.   |
| <b>Step 3</b> | <b>snmp-server view <i>view-name</i> ciscoUserConnectionTapMIB included</b><br><b>Example:</b><br><pre>RP/0//CPU0:router(config)# snmp-server view TapName ciscoUserConnectionTapMIB included</pre>   | Creates or modifies a view record and includes the CISCO-USER-CONNECTION-TAP-MIB family, to manage the Cisco intercept feature for user connections. This MIB is used along with the CISCO-TAP2-MIB to intercept and filter user traffic.  |
| <b>Step 4</b> | <b>snmp-server group <i>group-name</i> v3auth read <i>view-name</i> write <i>view-name</i> notify <i>view-name</i></b><br><b>Example:</b><br><pre>RP/0//CPU0:router(config)# snmp-server group TapGroup v3 auth read TapView write TapView notify TapView</pre> | Configures a new SNMP group that maps SNMP users to SNMP views. This group must have read, write, and notify privileges for the SNMP view.   |
| <b>Step 5</b> | <b>snmp-server host <i>ip-address</i> traps version 3 auth <i>username</i> <i>udp-port</i> <i>port-number</i></b><br><b>Example:</b><br><pre>RP/0//CPU0:router(config)# snmp-server host 223.255.254.224 traps version 3 auth bgreen udp-port 2555</pre>        | Specifies SNMP trap notifications, the version of SNMP to use, the security level of the notifications, and the recipient (host) of the notifications.   |
| <b>Step 6</b> | <b>snmp-server user <i>mduser-id</i> <i>groupname</i> v3 auth md5 <i>md-password</i></b><br><b>Example:</b><br><pre>RP/0//CPU0:router(config)# snmp-server mduser-id TapGroup v3 auth md5 mdpassword</pre>  | <p>Configures the MD user as part of an SNMP group, using the v3 security model and the HMAC MD5 algorithm, which you associate with the MD password.</p> <ul style="list-style-type: none"> <li>• The <i>mduser-id</i> and <i>mdpassword</i> must match that configured on MD. Alternatively, these values must match those in use on the router.</li> <li>• Passwords must be eight characters or longer to comply with SNMPv3 security minimums.</li> </ul> |

|                | Command or Action  | Purpose   |
|----------------|--|---|
|                |  | <ul style="list-style-type: none"> <li>• Minimum Lawful Intercept security level is auth; The noauth option will not work, as it indicates noAuthnoPriv security level. The Lawful Intercept security level must also match that of the MD.</li> <li>• Choices other than MD5 are available on the router, but the MD values must match.</li> </ul> <p>Most MDs default to or support only MD5.</p>   |
| <b>Step 7</b>  | Use the <b>commit</b> or <b>end</b> command.                             | <p><b>commit</b> —Saves the configuration changes and remains within the configuration session.</p> <p><b>end</b> —Prompts user to take one of these actions:</p> <ul style="list-style-type: none"> <li>• <b>Yes</b> — Saves configuration changes and exits the configuration session.</li> <li>• <b>No</b> —Exits the configuration session without committing the configuration changes.</li> <li>• <b>Cancel</b> —Remains in the configuration session, without committing the configuration changes.</li> </ul> |
| <b>Step 8</b>  | show snmp users<br><b>Example:</b><br>RP/0//CPU0:router# show snmp users | Displays information about each SNMP username in the SNMP user table.   |
| <b>Step 9</b>  | show snmp group<br><b>Example:</b><br>RP/0//CPU0:router# show snmp group | Displays information about each SNMP group on the network.  |
| <b>Step 10</b> | show snmp view<br><b>Example:</b><br>RP/0//CPU0:router# show snmp view   | Displays information about the configured views, including the associated MIB view family name, storage type, and status.   |

### Enabling the Mediation Device to Intercept VoIP and Data Sessions: An example

```

configure
snmp-server view TapName ciscoTap2MIB included
snmp-server view TapName ciscoUserConnectionTapMIB included
snmp-server group TapGroup v3 auth read TapView write TapView notify TapView
snmp-server host 223.255.254.224 traps version 3 auth bgreen udp-port 2555
snmp-server mduser-id TapGroup v3 auth md5 mdpassword
end
!
!
```

## Radius-based Lawful Intercept

Radius-based Lawful Intercept feature provides mechanisms for interception of the BNG subscriber traffic by using the RADIUS attributes. This is a preferred method over SNMP user-connection MIB, as SNMP-based method prevents a session to be tapped until an IP address has been assigned to the session. In the Radius-based LI mechanism, tapping is possible as soon as a session is established.

A RADIUS-based Lawful Intercept solution enables intercept requests to be sent (through Access-Accept packets or Change of Authorization (CoA)-Request packets) to the network access server (NAS) or to the Layer 2 Tunnel Protocol access concentrator (LAC) from the RADIUS server. All traffic data going to or from a PPP or L2TP session is passed to a mediation device. Another advantage of RADIUS-based Lawful Intercept solution is to set the tap with Access-Accept packets that allows all target traffic to be intercepted simultaneously.

The RADIUS-based Lawful Intercept feature provides tap initiation support for these modes:

- Access-Accept based Lawful Intercept for the new session
- CoA based Lawful Intercept for existing session



**Note** By default, the Radius-based Lawful Intercept functionality is not enabled. For more information about enabling Radius-based Lawful Intercept, see [Enabling RADIUS-based Lawful Intercept, on page 12](#).

## Enabling RADIUS-based Lawful Intercept

Perform this task to enable the Radius-based Lawful Intercept feature.

### SUMMARY STEPS

1. **configure**
2. **aaa intercept**
3. **aaa server radius dynamic-author**
4. **port** *port\_number*
5. **server-key** [*0|7*] *word*
6. **client** *hostname* { **vrf** *vrf\_name* | **server-key** [*0|7*] *word* }
7. Use the **commit** or **end** command.

### DETAILED STEPS

#### Procedure

|               | Command or Action  | Purpose  |
|---------------|--|--|
| <b>Step 1</b> | <b>configure</b><br><br><b>Example:</b><br><br>RP/0/RSP0/CPU0:router# <b>configure</b> | Enters global configuration mode.                  |
| <b>Step 2</b> | <b>aaa intercept</b>   | Enables the radius-based lawful intercept feature. |

|               | Command or Action   | Purpose  |
|---------------|---|--|
|               | <b>Example:</b><br>RP/0/RSP0/CPU0:router(config)# aaa intercept   | <b>Note</b><br>This command is available only after installing and activating <b>asr9k-li-px.pie</b> .<br><br>When you disable aaa intercept, all radius-based taps are removed from the Cisco ASR 9000 Series Router.   |
| <b>Step 3</b> | <b>aaa server radius dynamic-author</b><br><br><b>Example:</b><br>RP/0/RSP0/CPU0:router(config)# aaa server radius dynamic-author   | Configures the lawful intercept as a AAA server and enters the dynamic authorization local server configuration mode.  |
| <b>Step 4</b> | <b>port port_number</b><br><br><b>Example:</b><br>RP/0/RSP0/CPU0:router(config-Dynamic Author)# port 1600   | Specifies the RADIUS server port. The default port number is 1700.   |
| <b>Step 5</b> | <b>server-key [0/7] word</b><br><br><b>Example:</b><br>RP/0/RSP0/CPU0:router(config-Dynamic Author)# server-key cisco   | Specifies the encryption key shared with the RADIUS client.  |
| <b>Step 6</b> | <b>client hostname{ vrf vrf_name   server-key [0/7] word }</b><br><br><b>Example:</b><br>RP/0/RSP0/CPU0:router(config-Dynamic Author)# client 3.0.0.28 vrf default server-key cisco | Specifies the client with which the AAA server will be communicating.<br><br><b>Note</b><br>You can configure the server key in a global mode and also as a per client type key.   |
| <b>Step 7</b> | Use the <b>commit</b> or <b>end</b> command.  | <b>commit</b> —Saves the configuration changes and remains within the configuration session.<br><br><b>end</b> —Prompts user to take one of these actions: <ul style="list-style-type: none"> <li>• <b>Yes</b> — Saves configuration changes and exits the configuration session.</li> <li>• <b>No</b> —Exits the configuration session without committing the configuration changes.</li> <li>• <b>Cancel</b> —Remains in the configuration session, without committing the configuration changes.</li> </ul> |

### Enabling RADIUS-based Lawful Intercept: An example

```
configure
aaa intercept
aaa server radius dynamic-author
port 1600
server-key cisco
```

```

client 3.0.0.28 vrf default server-key cisco
end
!
!

```

### What to do next

These attributes need to be present in the user profile to configure the Radius-based Lawful Intercept.

```

xyz_user1@domain.com Password == "cisco"
Cisco-avpair = "md-ip-addr=192.1.1.4",
Cisco-avpair += "md-port=203",
Cisco-avpair += "md-dscp=3",
Cisco-avpair += "intercept-id=abcd0003",
Cisco-avpair += "li-action=1"

```

## SNMP Lawful Intercept Using Circuit-Id

SNMP lawful intercept (LI) using Circuit-Id in BNG provides a way to intercept the subscriber traffic based on a static identifier rather than the interface name or accounting session ID that changes every time a subscriber logs in to the network. This feature reduces the constraints on the back end, thereby providing a seamless integration.

For more details on lawful intercept, refer *Implementing Lawful Intercept* chapter in *System Security Configuration Guide for Cisco ASR 9000 Series Routers*.

For more details on implementing SNMP, refer *Implementing SNMP* chapter in *System Management Configuration Guide for Cisco ASR 9000 Series Routers*.

### Configuration Example

Execute these commands on SNMP server:

- Create lawful intercept-mediation device (LI-MD):

```

# Create LI-MD
# CDID : 11
# MD IP: 5.5.5.2
# UDP PORT: 1234
# TIME TILL: 2016 (07-E0), FEB (02), 29 (1D)

snmpset -v3 -u li-user -A cisco123 -l authNoPriv 25.25.25.1 \
1.3.6.1.4.1.9.9.399.1.1.2.1.13.11 i 5 \
1.3.6.1.4.1.9.9.399.1.1.2.1.2.11 i 1 \
1.3.6.1.4.1.9.9.399.1.1.2.1.3.11 x "05 05 05 02" \
1.3.6.1.4.1.9.9.399.1.1.2.1.4.11 u 1234 \
1.3.6.1.4.1.9.9.399.1.1.2.1.5.11 i 0 \
1.3.6.1.4.1.9.9.399.1.1.2.1.11.11 i 1 \
1.3.6.1.4.1.9.9.399.1.1.2.1.10.11 x "07 E0 02 1D 00 00 00 00 2D 00 00" \
1.3.6.1.4.1.9.9.399.1.1.2.1.13.11 i 4

```

- Create subscriber TAP stream:

```

# CREATE SUBSCRIBER TAP STREAM BASED ON CID
# STREAM INDEX: 22
# SUBS CID: cid101

```

```
snmpset -v3 -u li-user -A cisco123 -l authNoPriv 25.25.25.1 \
1.3.6.1.4.1.9.9.400.1.1.2.1.3.11.22 s "cid101" \
1.3.6.1.4.1.9.9.400.1.1.2.1.2.11.22 i 4
```

- Enable TAP:

```
# ENABLE TAP ON THE STREAM
# MD CDDI: 11
# TAP STREAM ID: 22
# STREAM TYPE: 3 (SUBS)

snmpset -v3 -u li-user -A cisco123 -l authNoPriv 25.25.25.1 \
1.3.6.1.4.1.9.9.399.1.2.1.1.2.11.22 i 3 \
1.3.6.1.4.1.9.9.399.1.2.1.1.3.11.22 i 1 \
1.3.6.1.4.1.9.9.399.1.2.1.1.6.11.22 i 4
```

## Verification

Execute this command on SNMP server to verify the statistics:

```
snmpwalk -v3 -u li-user -A cisco123 -l authNoPriv 25.25.25.1 1.3.6.1.4.1.9.9.399
```

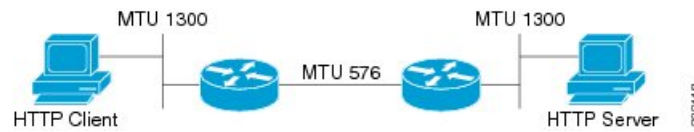
```
SNMPv2-SMI::enterprises.9.9.399.1.1.1.0 = INTEGER: 54
SNMPv2-SMI::enterprises.9.9.399.1.1.2.1.2.11 = INTEGER: 1
SNMPv2-SMI::enterprises.9.9.399.1.1.2.1.3.11 = Hex-STRING: 05 05 05 02
SNMPv2-SMI::enterprises.9.9.399.1.1.2.1.4.11 = Gauge32: 1234
SNMPv2-SMI::enterprises.9.9.399.1.1.2.1.5.11 = INTEGER: 0
SNMPv2-SMI::enterprises.9.9.399.1.1.2.1.7.11 = INTEGER: 34
SNMPv2-SMI::enterprises.9.9.399.1.1.2.1.10.11 = Hex-STRING: 07 E0 02 1D 00 00 00 00 2D 00
00
SNMPv2-SMI::enterprises.9.9.399.1.1.2.1.11.11 = INTEGER: 1
SNMPv2-SMI::enterprises.9.9.399.1.1.2.1.12.11 = INTEGER: 1
SNMPv2-SMI::enterprises.9.9.399.1.1.2.1.13.11 = INTEGER: 1
SNMPv2-SMI::enterprises.9.9.399.1.1.3.0 = Hex-STRING: A0
SNMPv2-SMI::enterprises.9.9.399.1.2.1.1.2.11.22 = INTEGER: 3
SNMPv2-SMI::enterprises.9.9.399.1.2.1.1.3.11.22 = INTEGER: 1
SNMPv2-SMI::enterprises.9.9.399.1.2.1.1.4.11.22 = Counter32: 13921356
SNMPv2-SMI::enterprises.9.9.399.1.2.1.1.5.11.22 = Counter32: 0
SNMPv2-SMI::enterprises.9.9.399.1.2.1.1.6.11.22 = INTEGER: 1
SNMPv2-SMI::enterprises.9.9.399.1.3.1.0 = INTEGER: 600
SNMPv2-SMI::enterprises.9.9.399.1.3.2.0 = INTEGER: 10
```

# TCP MSS Adjustment for BNG

The TCP MSS Adjustment feature allows the configuration of the maximum segment size (MSS) on transient packets that traverse a Cisco ASR 9000 Series Router.

When dealing with PPPoE or L2TP cases, an additional header that the client initiating a TCP session may not be aware of is added to the packet. This can result in lost packets, broken transmissions, or fragmentation when packet sizes exceed the maximum transmission units (MTUs) due to the added headers.

Here is a sample scenario that shows how the TCP MSS adjust feature works:

**Figure 1: Sample TCP MSS Adjust**

In this example, the HTTP client sends to the HTTP server a TCP synchronize (SYN) packet that signals an MSS value of 1300 (MTU) - 20 TCP - 20 IP header = 1260. On receiving it, the HTTP server acknowledges it with a SYN ACK message. The HTTP client confirms the TCP session with a single acknowledgment and opens up the TCP channel.



**Note** This is a sample scenario without PPPoE or L2TP.

When the HTTP server picks up a large file, it segments it into 1460 byte chunks (assuming that there are no http headers for now). When the HTTP server sends the packet, the first Cisco ASR 9000 Series Router (on the right) detects that the MTU is 576 downstream to the client and requires a 1300 byte packet to be fragmented.

If the server sets the DF ("don't fragment") bit, then the packet is dropped. And, if the packet does not have the DF bit set, then it gets fragmented, requiring the client to reassemble the packets. In digital subscriber line (DSL) or fibre-to-the-home (FTTH) like access, a CPE may block incoming fragments as a security mechanism, causing this transmission to be lost.

In a typical scenario, having packets that are dropped causes partial downloads, an obstruction, or a delay in displaying images in web pages. MSS adjust overcomes this scenario by intercepting the TCP SYN packet, reading the MSS option, and adjusting the value so that the server does not send packets larger than the configured size (plus headers).

Note that the TCP MSS value is only adjusted downward. If the clients request an MSS value lower than the configured value, then no action is taken.

In the case of PPPoE, an extra 8 bytes and in the case of L2TP, an extra 40 bytes is added to the packet. The recommended MSS adjust values are 1452 for PPPoE, and 1420 for L2TP scenarios, assuming a minimum MTU of 1500 end-to-end.

Separate unique global values for PTA and L2TP are supported, which once configured allows all future sessions to be TCP MSS adjustment; however, the sessions already established will not be TCP adjusted. If the global value is changed, then all new TCP subscriber sessions, will get the new global value.

For more information about configuring the TCP MSS value of packets, see [Configuring the TCP MSS Value of TCP Packets, on page 17](#).



**Note** To disable this on a session, you must first disable the global configuration, then delete the session and recreate it.

TCP encapsulated in both IPv4 and IPv6 are supported.

### Restrictions

These restrictions are applicable for TCP MSS Adjustment:



- Because the MSS is TCP-specific, the TCP MSS Adjustment feature is applicable only to (transit) TCP packets and the UDP packets are unaffected.
- TCP MSS Adjustment configuration affects only the PPPoE PTA and LAC sessions types. It does not affect IP sessions or any non-BNG interfaces.
- The MSS option must be the first option in the TCP header.
- The router uses the MSS value that the user configures for checking TCP/IPV4 packets. When checking TCP/IPV6 packets, the router automatically adjusts the configured MSS value down by 20 bytes to account for the larger IPv6 header. For example, if the TCP MSS value is configured to 1450, then the router adjusts the TCP MSS in an IPV4 packet down to 1450 and down to 1430 for an IPv6 packet.

## Configuring the TCP MSS Value of TCP Packets

Perform this task to configure the TCP MSS value of TCP packets in order to prevent TCP sessions from being dropped.

### SUMMARY STEPS

1. **configure**
2. **subscriber**
3. **pta tcp mss-adjust** *max-segment-size*
4. Use the **commit** or **end** command.
5. **configure**
6. **vpdn**
7. **l2tp tcp-mss-adjust** *max-segment-size*
8. Use the **commit** or **end** command.

### DETAILED STEPS

| Procedure |   |   |
|-----------|---|---|
|           | Command or Action   | Purpose   |
| Step 1    | <b>configure</b><br><b>Example:</b><br>RP/0/RSP0/CPU0:router# configure           | Enters global configuration mode.   |
| Step 2    | <b>subscriber</b><br><b>Example:</b><br>RP/0/RSP0/CPU0:router(config)# subscriber | Enables the subscriber configuration mode.  |
| Step 3    | <b>pta tcp mss-adjust</b> <i>max-segment-size</i><br><b>Example:</b>              | Sets the MSS value of TCP packets going through a Cisco ASR 9000 Series Router for a PTA subscriber. The TCP MSS Adjust maximum segment size ranges from 1280 to 1536 (in bytes). |

|               | Command or Action  | Purpose  |
|---------------|--|--|
|               | RP/0/RSP0/CPU0:router(config-subscriber)# pta tcp mss-adjust 1300  | <b>Note</b><br>The value represents the global value for the PTA sessions, when the feature is enabled it applies to all sessions.   |
| <b>Step 4</b> | Use the <b>commit</b> or <b>end</b> command.   | <b>commit</b> —Saves the configuration changes and remains within the configuration session.<br><b>end</b> —Prompts user to take one of these actions: <ul style="list-style-type: none"> <li>• <b>Yes</b> — Saves configuration changes and exits the configuration session.</li> <li>• <b>No</b> —Exits the configuration session without committing the configuration changes.</li> <li>• <b>Cancel</b> —Remains in the configuration session, without committing the configuration changes.</li> </ul> |
| <b>Step 5</b> | <b>configure</b><br><b>Example:</b><br><br>RP/0/RSP0/CPU0:router# configure  | Enters global configuration mode.  |
| <b>Step 6</b> | <b>vpdn</b><br><b>Example:</b><br><br>RP/0/RSP0/CPU0:router(config)# vpdn  | Enables the vpdn configuration mode.   |
| <b>Step 7</b> | <b>l2tp tcp-mss-adjust max-segment-size</b><br><b>Example:</b><br><br>RP/0/RSP0/CPU0:router(config-vpdn)# l2tp tcp-mss-adjust 1300 | Sets the MSS value of TCP packets going through a Cisco ASR 9000 Series Router for a LAC subscriber. The TCP MSS Adjust maximum segment size ranges from 1280 to 1460 (in bytes).  |
| <b>Step 8</b> | Use the <b>commit</b> or <b>end</b> command.   | <b>commit</b> —Saves the configuration changes and remains within the configuration session.<br><b>end</b> —Prompts user to take one of these actions: <ul style="list-style-type: none"> <li>• <b>Yes</b> — Saves configuration changes and exits the configuration session.</li> <li>• <b>No</b> —Exits the configuration session without committing the configuration changes.</li> <li>• <b>Cancel</b> —Remains in the configuration session, without committing the configuration changes.</li> </ul> |

### Configuring the TCP MSS Value of TCP Packets: Examples

```
//Example for configuring the TCP MSS value of TCP packets for a PPPoE PTA subscriber session:
```

```
configure
subscriber
pta tcp mss-adjust 1280
!!
```

```
// Example for configuring the TCP MSS value of TCP packets for a PPPoE LAC subscriber session:
```

```
configure
vpdn
l2tp tcp-mss-adjust 1460
!!
```

## Linking to Subscriber Traffic in a Shared Policy Instance Group

You can associate the subscriber traffic belonging to a Shared Policy Instance (SPI) group of multiple subinterfaces with a link using a Cisco Vendor-Specific Attribute (VSA). When you apply member hash Cisco:Avpair from RADIUS for a SPI group, traffic for that group will not spill across members. You can identify hash to member mapping based on the bundle's Link Ordering Number (LON).

To enable this feature, configure the following Cisco VSA in the RADIUS profile of the subscriber:

```
Cisco-avpair = "subscriber:member-hash=XX"
```

where XX is the hash value.

### Supported Features

- IPoE and PPPoE call flows
- IPv4 and IPv6
- Member hash can be downloaded from RADIUS server
- Traffic is programmed when a new hash value is downloaded and also when a bundle member is modified
- High availability scenarios such as Flap, LC OIR, Process restart, and RPFO
- Only route processor subscribers and with maximum scale

### Verifying Hash Value

To display the hash value programmed for the subscriber session, refer to Flow-tag value in the **show route address detail** command output:

```
RP/0/0/CPU0:server#show route 10.0.0.1/32 detail
Mon Mar  2 20:08:29.079 IST
```

```
Routing entry for 10.0.0.1/32
  Known via "subscriber", distance 2, metric 0 (connected)
  Installed Mar  2 20:07:35.448 for 00:00:54
```

```

Routing Descriptor Blocks
  directly connected, via GigabitEthernet0/0/0/0.pppoe1
    Route metric is 0
    Label: 0x300 (768)
    Tunnel ID: None
    Extended communities count: 0
    NHID:0x0(Ref:0)
  Route version is 0x1 (1)
  No local label
  IP Precedence: Not Set
  QoS Group ID: Not Set
Flow-tag: 33
  Route Priority: RIB_PRIORITY_RECURSIVE (9) SVD Type RIB_SVD_TYPE_LOCAL
  Download Priority 3, Download Version 5
  No advertising protos.

```

## Subscriber Session on Ambiguous VLANs

Ambiguous VLAN enables you to create multiple subscriber sessions on a single access-interfaces. As a result, it increases the scalability of the access-interface. An ambiguous VLAN is an L3 interface on which either a VLAN ID range, or a group of individual VLAN IDs are specified. Instead of individually mapping each subscriber to a VLAN, an ambiguous VLAN configuration performs the mapping for a group. Multiple subscribers can be mapped on the ambiguous VLAN as long as they possess a unique MAC address. The subscriber sessions created over ambiguous VLANs are identical to the ones created over regular VLANs, and support all regular configurations such as policy-map, VRFs, QoS, access-control list, and so on.

For enabling IPoE subscriber session creation on an ambiguous VLAN, see [Establishing Subscriber Session on Ambiguous VLANs, on page 20](#).

From Cisco IOS XR Release 5.1.3 and later, the DHCP offer can be send as Unicast (or as per the broadcast policy flag in the DHCP request) for ambiguous VLANs. The ambiguous VLAN configuration in this case, must use a range of VLAN tags (For example, **encapsulation ambiguous dot1q 10, 100**).

For ambiguous VLAN dot1q configuration where the match criteria is explicitly configured for inner and outer VLAN tags or where a range is specified or where **any** is used for outer VLAN tag, the MTU is calculated by adding 8 bytes (2x dot1q tags) to the default MTU. That is, if default is 1514, the MTU is set to 1522 bytes in such scenarios. Whereas, for configurations where the match criteria for inner VLAN is specified as **any**, the MTU on the sub-interface is calculated by adding 4 (and not 8) bytes to the main interface MTU. That is,  $1514 + 4 = 1518$  bytes. This behavior is applicable for both physical interfaces and bundle sub-interfaces.

### Restriction

The use of **any** tag in the ambiguous VLAN configuration is not supported for Unicast DHCP offers. The DHCP offer packets are not forwarded to the subscriber if **any** tag is used in the configuration.

A DHCP proxy debug error message saying, ARP is not supported on ambiguous VLAN interface, is logged in such failure scenarios.

## Establishing Subscriber Session on Ambiguous VLANs

Perform this task to define an ambiguous VLAN and enable creation of IP subscriber session on it.



**Note** There is no DHCP-specific configuration required for ambiguous VLANs.

## SUMMARY STEPS

1. **configure**
2. **interface** *type interface-path-id*
3. Use any of these commands to configure encapsulated ambiguous VLANs:
  - **encapsulation ambiguous { dot1q | dot1ad } {any | vlan-range }**
  - **encapsulation ambiguous dot1q vlan-id second-dot1q { any | vlan-range }**
  - **encapsulation ambiguous dot1q any second-dot1q { any | vlan-id }**
  - **encapsulation ambiguous dot1ad vlan-id dot1q { any | vlan-range }**
  - **encapsulation ambiguous dot1q vlan-range second-dot1q any**
  - **encapsulation ambiguous dot1ad vlan-range dot1q any**
4. **ipv4 | ipv6address** *source-ip-address destination-ip-address*
5. **service-policy type control subscriber** *policy\_name*
6. **ipsubscriber ipv4 l2-connected**
7. **initiator dhcp**
8. Use the **commit** or **end** command.

## DETAILED STEPS

### Procedure

|               | Command or Action   | Purpose   |
|---------------|---|---|
| <b>Step 1</b> | <b>configure</b><br><b>Example:</b><br>RP/0/RSP0/CPU0:router# <b>configure</b>  | Enters global configuration mode.   |
| <b>Step 2</b> | <b>interface</b> <i>type interface-path-id</i><br><b>Example:</b><br>RP/0/RSP0/CPU0:router(config)# <b>interface</b><br>GigabitEthernet0/1/0/0.12   | Configures the interface and enters the interface configuration mode.   |
| <b>Step 3</b> | Use any of these commands to configure encapsulated ambiguous VLANs: <ul style="list-style-type: none"> <li>• <b>encapsulation ambiguous { dot1q   dot1ad } {any   vlan-range }</b></li> <li>• <b>encapsulation ambiguous dot1q vlan-id second-dot1q { any   vlan-range }</b></li> <li>• <b>encapsulation ambiguous dot1q any second-dot1q { any   vlan-id }</b></li> </ul> | Configures IEEE 802.1Q VLAN configuration.<br>The <i>vlan-range</i> is given in comma-separated, or hyphen-separated format, or a combination of both, as shown in the examples.<br><b>Note</b><br>Although <b>encapsulation ambiguous dot1ad</b> is supported, it is not commonly used in BNG deployments. |

|               | Command or Action   | Purpose   |
|---------------|---|---|
|               | <ul style="list-style-type: none"> <li>• <b>encapsulation ambiguous dot1ad</b> <i>vlan-id</i> <b>dot1q</b> { <b>any</b>   <i>vlan-range</i> }</li> <li>• <b>encapsulation ambiguous dot1q</b> <i>vlan-range</i> <b>second-dot1q any</b></li> <li>• <b>encapsulation ambiguous dot1ad</b> <i>vlan-range</i> <b>dot1q any</b></li> </ul> <p><b>Example:</b></p> <pre>RP/0/RSP0/CPU0:router(config-if)# encapsulation ambiguous dot1q any RP/0/RSP0/CPU0:router(config-if)# encapsulation ambiguous dot1q 14 second-dot1q 100-200 RP/0/RSP0/CPU0:router(config-if)# encapsulation ambiguous dot1q any second-dot1q any RP/0/RSP0/CPU0:router(config-if)# encapsulation ambiguous dot1ad 14 dot1q 100,200,300-400 RP/0/RSP0/CPU0:router(config-if)# encapsulation ambiguous dot1q 1-1000 second-dot1q any</pre> | <b>encapsulation ambiguous dot1q any</b> is not supported for unicast DHCP offers. You must use <b>encapsulation ambiguous dot1q</b> <i>vlan-range</i> for such scenarios.  |
| <b>Step 4</b> | <p><b>ipv4   ipv6address</b> <i>source-ip-address</i> <i>destination-ip-address</i></p> <p><b>Example:</b></p> <pre>RP/0/RSP0/CPU0:router(config-if)# ipv4 address 2.1.12.1 255.255.255.0 RP/0/RSP0/CPU0:router(config-if)# ipv6 address 1:2:3::4 128</pre>   | Configures the IPv4 or IPv6 protocol address.   |
| <b>Step 5</b> | <p><b>service-policy type control subscriber</b> <i>policy_name</i></p> <p><b>Example:</b></p> <pre>RP/0/RSP0/CPU0:router(config-if)# service-policy type control subscriber PL1</pre>  | Applies a policy-map to an access interface where the policy-map was previously defined with the specified PL1 <i>policy_name</i> .   |
| <b>Step 6</b> | <p><b>ipsubscriber ipv4 l2-connected</b></p> <p><b>Example:</b></p> <pre>RP/0/RSP0/CPU0:router(config-if)# ipsubscriber ipv4 l2-connected</pre>   | Enables l2-connected IPv4 IP subscriber.  |
| <b>Step 7</b> | <p><b>initiator dhcp</b></p> <p><b>Example:</b></p> <pre>RP/0/RSP0/CPU0:router(config-if)# initiator dhcp</pre>   | Enables initiator DHCP on the IP subscriber.  |
| <b>Step 8</b> | Use the <b>commit</b> or <b>end</b> command.  | <p><b>commit</b> —Saves the configuration changes and remains within the configuration session.</p> <p><b>end</b> —Prompts user to take one of these actions:</p> <ul style="list-style-type: none"> <li>• <b>Yes</b> — Saves configuration changes and exits the configuration session.</li> </ul> |

|  | Command or Action | Purpose  |
|--|-------------------|--|
|  |                   | <ul style="list-style-type: none"> <li>• <b>No</b> —Exits the configuration session without committing the configuration changes.</li> <li>• <b>Cancel</b> —Remains in the configuration session, without committing the configuration changes.</li> </ul> |

### Establishing Subscriber Session on Ambiguous VLANs: An example

```

configure
interface Bundle-Ether100.10
encapsulation ambiguous dot1q 14 second-dot1q any
ipv4 address 2.1.12.12 55.255.255.0
service-policy type control subscriber PL1
ipsubscriber ipv4 l2-connected
!
!
end

```

## Outer VLAN Range

The Outer VLAN range is a BNG-specific feature that provides a more advanced VLAN encapsulation option of double-tagged VLANs, where the outer VLAN is specified as a range and the inner VLAN is specified as **any**.

The current BNG implementation supports a high scale of subscriber interface. However, due to QoS hardware limitation, the number of subscribers with QoS policies attached under a single L3 ambiguous VLAN sub-interface is limited to 8K. Therefore, in a large scale scenario, if QoS policies are to be attached to each of the subscribers and if the maximum scale per port is to be achieved, you must configure multiple L3 ambiguous VLAN sub-interfaces per port, with encapsulations that partition the subscribers among the VLAN sub-interfaces. The encapsulations used in such scenarios are:

- Single-tagged VLAN range encapsulations.
- Double-tagged encapsulation, with an inner VLAN range.
- Double-tagged encapsulations, with a fixed outer VLAN-ID and an inner VLAN match for **any**.

In certain scenarios, depending on how the VLAN-IDs are allocated for the subscribers, none of the above partitioning schemes may be suitable. In such scenarios, the L3 ambiguous encapsulation double tag that matches an outer VLAN range and **any** inner VLAN can be used.

The configuration options available for the Outer VLAN range feature are:

- **encapsulation ambiguous dot1q *vlan range* second-dot1q any**
- **encapsulation ambiguous dot1ad *vlan range* dot1q any**

## Sample Configuration for Outer VLAN Range

The sample configuration listed in this section shows how to configure 32K subscribers for each physical interface, using a double-tagged encapsulation to partition the subscribers across four sub-interfaces. Here,

8K subscribers, each with a separate QoS policy applied, are configured for each VLAN sub-interface. Further, a total of four VLAN sub-interfaces are configured to support 32K subscribers for each physical interface.

#### Option 1: Four VLAN sub-interfaces

```
interface GigabitEthernet0/0/0/0.1
encapsulation ambiguous dot1q 1-1000 second-dot1q any
!
interface GigabitEthernet0/0/0/0.2
encapsulation ambiguous dot1q 1001-2000 second-dot1q any
!
interface GigabitEthernet0/0/0/0.3
encapsulation ambiguous dot1q 2001-3000 second-dot1q any
!
interface GigabitEthernet0/0/0/0.4
encapsulation ambiguous dot1q 3001-4000 second-dot1q any
!
```

#### Option 2: Nine VLAN configuration ranges

```
interface GigabitEthernet0/0/0/0.1
encapsulation ambiguous dot1q 9-18, 19-25, 26, 27-30, 32, 33-40, 42, 43-50, 52 second-dot1q
any
!
```

## Verification of Outer VLAN Range Configurations

These show commands can be used to verify the outer VLAN range configurations in BNG:

### SUMMARY STEPS

1. **show interface** *VLAN sub-interface*
2. **show ethernet tags** *VLAN sub-interface*
3. **show ethernet tags** *VLAN sub-interface detail*

### DETAILED STEPS

#### Procedure

##### Step 1 **show interface** *VLAN sub-interface*

Displays VLAN sub-interface details, including encapsulations.

##### Example:

```
RP/0/RSP0/CPU0:router#
show interfaces GigabitEthernet 0/1/0/10.12
GigabitEthernet0/1/0/10.12 is up, line protocol is up
  Interface state transitions: 1
  Hardware is VLAN sub-interface(s), address is 0022.bde2.b222
  Internet address is Unknown
  MTU 1518 bytes, BW 1000000 Kbit (Max: 1000000 Kbit)
    reliability 255/255, txload 0/255, rxload 0/255
  Encapsulation 802.1Q Virtual LAN,
```



```

Outer Match: Dot1Q VLAN 11-20,21-30,31-60,61-100,101-140,141-180,181-220,221-260,261-300
Inner Match: Dot1Q VLAN any
Ethertype Any, MAC Match src any, dest any
loopback not set,
Last input never, output never
Last clearing of "show interface" counters never
5 minute input rate 0 bits/sec, 0 packets/sec
- - - - -
- - - - -

```

## Step 2 **show ethernet tags VLAN sub-interface**

Displays VLAN sub-interface outer tag information, including outer VLAN ranges.

### Example:

```

RP/0/RSP0/CPU0:router#
show ethernet tags tengigE 0/0/0/0.1
St:    AD - Administratively Down, Dn - Down, Up - Up
Ly:    L2 - Switched layer 2 service, L3 = Terminated layer 3 service,
Xtra   C - Match on Cos, E - Match on Ethertype, M - Match on source MAC
-,+:   Ingress rewrite operation; number of tags to pop and push respectively

Interface          St  MTU  Ly Outer          Inner          Xtra -,+
Te0/0/0/0.1        Up  1522 L3 .1Q:10         .1Q:100-200    -   0 0
- - - - -
- - - - -

```

## Step 3 **show ethernet tags VLAN sub-interface detail**

Displays VLAN sub-interface outer tag information, including outer VLAN ranges, in detail.

### Example:

```

RP/0/RSP0/CPU0:router#
show ethernet tags GigabitEthernet 0/0/0/0.1 detail
GigabitEthernet0/1/0/10.12 is up, service is L3
  Interface MTU is 1518
  Outer Match: Dot1Q VLAN 11-20,21-30,31-60,61-100,101-140,141-180,181-220,221-260,261-300
  Inner Match: Dot1Q VLAN any
  Local traffic encaps: -
  Pop 0 tags, push none

```

## Limitations of Outer VLAN Range

The Outer VLAN Range feature is subjected to these restrictions:

- It is specific to BNG.
- The double-tagged L3 ambiguous encapsulation that matches an outer VLAN range and **any** inner VLAN, and an overlapping single tag encapsulation must not be configured at the same time under the same parent trunk interface. For example, the configurations listed here shows a double-tagged encapsulation configured under one sub-interface and a single-tagged encapsulation configured under another sub-interface of the same parent interface. Although it is not a valid configuration, the system does not reject it.

```
interface Bundle-ether 1.1
encapsulation ambiguous dot1q 2-100 second any
!
interface Bundle-ether 1.2
encapsulation ambiguous dot1q 3
```

- Network layer protocols must not be configured on L3 VLAN sub-interfaces configured with VLAN ranges or the **any** keyword. If they are configured in that manner, then any layer 3 traffic may be dropped. This is a limitation of generic ambiguous VLANs, and is applicable to BNG-specific outer VLAN range feature too.

## uRPF

Unicast Reverse Path Forwarding (uRPF) is a feature in BNG that verifies whether the packets that are received on a subscriber interface are sent from a valid subscriber. uRPF only applies to subscribers using an L3 service.

For PPPoE subscribers, the uRPF check ensures that the source address in the arriving packet matches the set of addresses associated with the subscriber. The subscriber addresses are the IPCP assigned addresses, or any framed routed assigned through RADIUS. PPPoE subscribers are identified by session ID and VLAN keys. BNG performs the uRPF check to ensure that the source IP address in the arriving packets matches the expected session IDs and VLAN keys.

For IPoE subscribers, the subscriber addresses are the ones assigned through DHCP. IPoE subscribers are identified by the incoming MAC address. The uRPF check ensures that the source IP address is the one allocated by DHCP to the source MAC address.

uRPF is supported on both IPv4 and IPv6 subscribers and is enabled using a dynamic template. To define a dynamic template for enabling uRPF, see [Creating Dynamic Template for IPv4 or IPv6 Subscriber Session](#).

## Multicast Services

Multicast services enable multiple subscribers to be recipients of a single transmission from one source. For example, real-time audio and video conferencing makes good use of a multicast service. The multicast features applied on the PPPoE interfaces of BNG includes:

## Multicast Coexistence

On BNG, the multicast services coexist with regular unicast services. The multicast feature on BNG is the same as the existing L3 multicast feature already supported on the Cisco ASR 9000 Series Routers. On BNG, multicast is enabled on the trunk interfaces, and the VLANs created over physical interfaces and bundles. Multicast co-existence works for PPPoE PTA subscriber sessions. For more details on multicast implementation on ASR9k, see *Implementing Layer-3 Multicast Routing on Cisco IOS XR Software* chapter in *Multicast Configuration Guide for Cisco ASR 9000 Series Routers*.

To enable multicast function on BNG, see [Enabling Address Family for the VRF](#), on page 26.

## Enabling Address Family for the VRF

Perform this task to enable multicast functions for the required address family.

## SUMMARY STEPS

1. **configure**
2. **multicast-routing**
3. **vrf** *vrf\_name*
4. **address-family ipv4**
5. Use the **commit** or **end** command.

## DETAILED STEPS

## Procedure

|               | Command or Action   | Purpose  |
|---------------|---|--|
| <b>Step 1</b> | <b>configure</b><br><br><b>Example:</b><br><br>RP/0/RSP0/CPU0:router# configure                             | Enters global configuration mode.  |
| <b>Step 2</b> | <b>multicast-routing</b><br><br><b>Example:</b><br><br>RP/0/RSP0/CPU0:router(config)# multicast routing     | Configures multicast-routing.  |
| <b>Step 3</b> | <b>vrf</b> <i>vrf_name</i><br><br><b>Example:</b><br><br>RP/0/RSP0/CPU0:router(config)# vrf vrf1            | Configures the vrf name.   |
| <b>Step 4</b> | <b>address-family ipv4</b><br><br><b>Example:</b><br><br>RP/0/RSP0/CPU0:router(config)# address-family ipv4 | Enables the multicast functions in the ipv4 address family.  |
| <b>Step 5</b> | Use the <b>commit</b> or <b>end</b> command.  | <b>commit</b> —Saves the configuration changes and remains within the configuration session.<br><br><b>end</b> —Prompts user to take one of these actions: <ul style="list-style-type: none"> <li>• <b>Yes</b> — Saves configuration changes and exits the configuration session.</li> <li>• <b>No</b> —Exits the configuration session without committing the configuration changes.</li> <li>• <b>Cancel</b> —Remains in the configuration session, without committing the configuration changes.</li> </ul> |

## Enabling Address Family for the VRF: An example

```
multicast-routing
vrf vrf1
address-family ipv4
```

```

!
!
end

```

## Multicast Replication

BNG supports the multicast packet replication on PPPoE interfaces. It also supports multicast forwarding on subscriber interfaces, and transmission of multicast IP video content. When the multicast replication is enabled for a subscriber, BNG performs IGMP statistics gathering for that subscriber, and has the ability to export them. Multicast replication is supported on subscriber interfaces, which are configured in the passive mode.

## HQoS Correlation

The Hierarchical quality of service (HQoS) correlation feature monitors every subscriber's multicast bandwidth usage through IGMP reports received on each subscriber's PPPoE session, and limits the unicast bandwidth usage, to leave enough bandwidth for multicast traffic. This is useful when the multicast traffic and unicast traffic share the same physical link to the subscriber in the last mile, when the multicast and unicast traffic are forwarded onto the last mile link by different devices. This feature is configured on BNG that forwards the unicast traffic to the subscriber. Based on the IGMP reports received, BNG informs the unicast QoS shaper on the PPPoE session to alter the bandwidth limit allowed for unicast traffic flows. Using this HQoS correlation feature, a service provider can protect the multicast traffic to the PPPoE subscriber from bursty unicast traffic. The bandwidth profiles for multicast flows need to be configured on BNG.

To define the bandwidth profile, see [Configuring Minimum Unicast Bandwidth, on page 28](#).

To specify the mode for Multicast HQoS, see [Configuring Multicast HQOS Correlation Mode or Passive Mode, on page 30](#).

## Configuring Minimum Unicast Bandwidth

A minimum unicast bandwidth can be configured, to prevent unicast traffic from being completely cut off by oversubscribed multicast traffic. Perform this task to set the guaranteed minimum unicast bandwidth for a subscriber using QoS.

### SUMMARY STEPS

1. **configure**
2. **dynamic-template**
3. **type** `[ppp | ip-subscriber | service] name`
4. **qos output minimum-bandwidth** *range*
5. **exit**
6. Use the **commit** or **end** command.

## DETAILED STEPS

## Procedure

|               | Command or Action  | Purpose   |
|---------------|--|---|
| <b>Step 1</b> | <b>configure</b><br><b>Example:</b><br>RP/0/RSP0/CPU0:router# configure  | Enters global configuration mode.   |
| <b>Step 2</b> | <b>dynamic-template</b><br><b>Example:</b><br>RP/0/RSP0/CPU0:router(config)# dynamic-template  | Enters dynamic template configuration mode.   |
| <b>Step 3</b> | <b>type</b> [ppp   ip-subscriber   service] <i>name</i><br><b>Example:</b><br>RP/0/RSP0/CPU0:router(config-dynamic-template)# type<br>ppp p1                   | <p>.</p> <p>Specifies the type of dynamic template that needs to be applied. Three available types are:</p> <ul style="list-style-type: none"> <li>• PPP</li> <li>• IP-subscriber</li> <li>• Service</li> </ul>   |
| <b>Step 4</b> | <b>qos output minimum-bandwidth</b> <i>range</i><br><b>Example:</b><br>RP/0/RSP0/CPU0:router(config-dynamic-template-type)# qos<br>output minimum-bandwidth 10 | Sets the guaranteed minimum bandwidth, in kbps, for a subscriber. Range is from 1 to 4294967295.  |
| <b>Step 5</b> | <b>exit</b><br><b>Example:</b><br>RP/0/RSP0/CPU0:router(config-dynamic-template-type)# exit  | Exits from the current mode.  |
| <b>Step 6</b> | Use the <b>commit</b> or <b>end</b> command.   | <p><b>commit</b> —Saves the configuration changes and remains within the configuration session.</p> <p><b>end</b> —Prompts user to take one of these actions:</p> <ul style="list-style-type: none"> <li>• <b>Yes</b> — Saves configuration changes and exits the configuration session.</li> <li>• <b>No</b> —Exits the configuration session without committing the configuration changes.</li> <li>• <b>Cancel</b> —Remains in the configuration session, without committing the configuration changes.</li> </ul> |

### Configuring Minimum Bandwidth: An example

```
configure
dynamic-template
type ppp pl
service-policy output pmap
multicast ipv4 qos-correlation
qos output minimum-bandwidth 10
end
```

## Configuring Multicast HQoS Correlation Mode or Passive Mode

Perform this task to configure multicast in HQoS correlation mode or passive mode to enable multicast replication over PPPoE interfaces.

### SUMMARY STEPS

1. **configure**
2. **dynamic-template**
3. **type ppp** *dynamic-template name*
4. **multicast ipv4** **<qos-correlation | passive>**
5. Use the **commit** or **end** command.

### DETAILED STEPS

#### Procedure

|               | Command or Action   | Purpose   |
|---------------|---|---|
| <b>Step 1</b> | <b>configure</b><br><br><b>Example:</b><br><br>RP/0/RSP0/CPU0:router# configure   | Enters global configuration mode.   |
| <b>Step 2</b> | <b>dynamic-template</b><br><br><b>Example:</b><br><br>RP/0/RSP0/CPU0:router(config)# dynamic-template   | Enter the dynamic-template configuration mode.  |
| <b>Step 3</b> | <b>type ppp</b> <i>dynamic-template name</i><br><br><b>Example:</b><br><br>RP/0/RSP0/CPU0:router(config-dynamic-template)#<br>type ppp foo  | Enters the ppp type mode to configure igmp for subscriber interfaces.   |
| <b>Step 4</b> | <b>multicast ipv4</b> <b>&lt;qos-correlation   passive&gt;</b><br><br><b>Example:</b><br><br>RP/0/RSP0/CPU0:router(config-dynamic-template-type)#<br>multicast ipv4 qos-correlation | Configures the subscriber either in the QoS-correlation mode (IGMP-HQoS correlation), or passive mode (multicast forwarding). |

|        | Command or Action                            | Purpose   |
|--------|--|---|
| Step 5 | Use the <b>commit</b> or <b>end</b> command. | <p><b>commit</b> —Saves the configuration changes and remains within the configuration session.</p> <p><b>end</b> —Prompts user to take one of these actions:</p> <ul style="list-style-type: none"> <li>• <b>Yes</b> — Saves configuration changes and exits the configuration session.</li> <li>• <b>No</b> —Exits the configuration session without committing the configuration changes.</li> <li>• <b>Cancel</b> —Remains in the configuration session, without committing the configuration changes.</li> </ul> |

### Configuring Multicast HQoS Correlation Mode: An example

```
dynamic-template type ppp foo
multicast ipv4 qos-correlation
!
!
end
```

## IGMP to Unicast QoS Shaper Correlation

The Unicast QoS Shaper correlation feature configures the bandwidth profiles for the multicast flows and allows the IGMP messages to derive the multicast bandwidth usage for each subscriber. On the PPPoE subscriber sessions, the amount of multicast bandwidth that a subscriber uses is deducted from the unicast QoS shaper until a minimum threshold is reached.

For more information about configuring the IGMP QoS shaper, see [Configuring the IGMP to HQoS Correlation Feature in a VRF, on page 31](#). For more information about configuring the IGMP for subscriber interfaces, see [Configuring IGMP Parameters for Subscriber Interfaces, on page 35](#).

IGMP uses route-policies to distribute the absolute rate for all multicast flows. For more information for configuring the route-policy for unicast QoS shaper, see [Configuring route-policy for Unicast QoS Shaper, on page 33](#).

### Configuring the IGMP to HQoS Correlation Feature in a VRF

Perform this task to configure the IGMP to HQoS Correlation Feature in a VRF.

#### SUMMARY STEPS

1. **configure**
2. **router igmp**
3. **unicast-qos-adjust adjustment-delay** *time*
4. **unicast-qos-adjust download-interval** *time*
5. **unicast-qos-adjust holdoff** *time*
6. **vrf** *vrf-name*
7. **traffic profile** *profile-name*

8. Use the **commit** or **end** command.

## DETAILED STEPS

### Procedure

|               | Command or Action   | Purpose  |
|---------------|---|--|
| <b>Step 1</b> | <b>configure</b><br><b>Example:</b><br><br>RP/0/RSP0/CPU0:router# configure   | Enters global configuration mode.  |
| <b>Step 2</b> | <b>router igmp</b><br><b>Example:</b><br><br>RP/0/RSP0/CPU0:router(config)# router igmp   | Enters the router process for IGMP configuration mode.   |
| <b>Step 3</b> | <b>unicast-qos-adjust adjustment-delay time</b><br><b>Example:</b><br><br>RP/0/RSP0/CPU0:router(config-igmp)#<br>unicast-qos-adjust adjustment-delay 1    | Configures the time to wait before programming rate in IGMP QoS shaper for subscriber unicast traffic. The time to wait ranges from 0 to 10 seconds.   |
| <b>Step 4</b> | <b>unicast-qos-adjust download-interval time</b><br><b>Example:</b><br><br>RP/0/RSP0/CPU0:router(config-igmp)#<br>unicast-qos-adjust download-interval 10 | Configures the time before downloading a batch of interfaces to IGMP QoS shaper for subscriber unicast traffic. The download interval time ranges from 10 to 500 milliseconds.   |
| <b>Step 5</b> | <b>unicast-qos-adjust holdoff time</b><br><b>Example:</b><br><br>RP/0/RSP0/CPU0:router(config-igmp)#<br>unicast-qos-adjust holdoff 5                      | Configures the hold-off time before QoS clears the stale entries for the IGMP QoS shaper. The hold-off time ranges from 5 to 1800 seconds.   |
| <b>Step 6</b> | <b>vrf vrf-name</b><br><b>Example:</b><br><br>RP/0/RSP0/CPU0:router(config-igmp)# vrf vrf1  | Enters the VRF configuration mode.   |
| <b>Step 7</b> | <b>traffic profile profile-name</b><br><b>Example:</b><br><br>RP/0/RSP0/CPU0:router(config-igmp-vrf1)# traffic<br>profile routepolicy1                    | Configures the route-policy to be used to map the bandwidth profile.   |
| <b>Step 8</b> | Use the <b>commit</b> or <b>end</b> command.  | <b>commit</b> —Saves the configuration changes and remains within the configuration session.<br><br><b>end</b> —Prompts user to take one of these actions: <ul style="list-style-type: none"> <li>• <b>Yes</b> — Saves configuration changes and exits the configuration session.</li> </ul> |



|  | Command or Action | Purpose  |
|--|-------------------|--|
|  |                   | <ul style="list-style-type: none"> <li>• <b>No</b> —Exits the configuration session without committing the configuration changes.</li> <li>• <b>Cancel</b> —Remains in the configuration session, without committing the configuration changes.</li> </ul> |

### Configuring the IGMP QoS Shaper: An Example

```

configure
router igmp
unicast-qos-adjust adjustment-delay 1
unicast-qos-adjust download-interval 10
unicast-qos-adjust holdoff 5
vrf vrf1
traffic profile routepolicy1
!
!
end

```

## Configuring route-policy for Unicast QoS Shaper

Perform this task to configure route-policy for unicast QoS shaper.

### SUMMARY STEPS

1. **configure**
2. **router igmp**
3. **vrf** *vrf-name*
4. **traffic profile** *profile-name*
5. Use the **commit** or **end** command.
6. **show igmp unicast-qos-adjust statistics**
7. **show igmp unicast-qos-adjust statistics interface** *interface-name*

### DETAILED STEPS

| Procedure |  |   |
|-----------|--|---|
|           | Command or Action  | Purpose   |
| Step 1    | <b>configure</b><br><b>Example:</b><br><br>RP/0/RSP0/CPU0:router# <b>configure</b> | Enters global configuration mode.                     |
| Step 2    | <b>router igmp</b><br><b>Example:</b>  | Enter the router process for igmp configuration mode. |

|               | Command or Action  | Purpose  |
|---------------|--|--|
|               | RP/0/RSP0/CPU0:router(config)# router igmp   |  |
| <b>Step 3</b> | <b>vrf</b> <i>vrf-name</i><br><br><b>Example:</b><br>RP/0/RSP0/CPU0:router(config-igmp)# vrf vrf1  | Enters the vrf configuration mode.   |
| <b>Step 4</b> | <b>traffic profile</b> <i>profile-name</i><br><br><b>Example:</b><br>RP/0/RSP0/CPU0:router(config-igmp-vrf1)# traffic profile routepolicy1   | Configures the route-policy to be used to map the bandwidth profile.   |
| <b>Step 5</b> | Use the <b>commit</b> or <b>end</b> command.   | <b>commit</b> —Saves the configuration changes and remains within the configuration session.<br><br><b>end</b> —Prompts user to take one of these actions: <ul style="list-style-type: none"> <li>• <b>Yes</b> — Saves configuration changes and exits the configuration session.</li> <li>• <b>No</b> —Exits the configuration session without committing the configuration changes.</li> <li>• <b>Cancel</b> —Remains in the configuration session, without committing the configuration changes.</li> </ul> |
| <b>Step 6</b> | <b>show igmp unicast-qos-adjust statistics</b><br><br><b>Example:</b><br>RP/0/RSP0/CPU0:router# show igmp unicast-qos-adjusted statistics  | (Optional) Displays the internal statistics of the feature, such as total number of interface groups under adjustment, uptime since last clear command, and total number of rate adjustment calls for unicast QoS shaper.  |
| <b>Step 7</b> | <b>show igmp unicast-qos-adjust statistics interface</b> <i>interface-name</i><br><br><b>Example:</b><br>RP/0/RSP0/CPU0:router# show igmp unicast-qos-adjusted statistics interface interface1 | (Optional) Displays the interface name, number of flows adjusted, total rate adjusted, uptime after first adjustment for unicast QoS shaper.   |

### Configuring route-policy for Unicast QoS Shaper: Examples

```
#Adding a route-policy for profile1

route-policy profile1
if destination in (239.0.0.0/8 le 32) then
set weight 1000
endif
end-policy

# Configuring profile1 for Unicast QoS Shaper
router igmp
vrf vrf1
traffic profile profile1
!
```

```

!
end

```

## Configuring IGMP Parameters for Subscriber Interfaces

Perform this task to configure IGMP parameters for subscriber interfaces.

### SUMMARY STEPS

1. **configure**
2. **dynamic-template**
3. **type ppp** *dynamic-template name*
4. **igmp explicit-tracking**
5. **igmp query-interval** *value*
6. **igmp query-max-response-time** *query-response-value*
7. Use the **commit** or **end** command.

### DETAILED STEPS

| Procedure |   |   |
|-----------|---|---|
|           | Command or Action   | Purpose   |
| Step 1    | <b>configure</b><br><b>Example:</b><br>RP/0/RSP0/CPU0:router# configure   | Enters global configuration mode.   |
| Step 2    | <b>dynamic-template</b><br><b>Example:</b><br>RP/0/RSP0/CPU0:router(config)# dynamic-template                                   | Enter the dynamic-template configuration mode.  |
| Step 3    | <b>type ppp</b> <i>dynamic-template name</i><br><b>Example:</b><br>RP/0/RSP0/CPU0:router(config-dynamic-template)# type ppp foo | Enters the ppp type mode to configure igmp for subscriber interfaces.   |
| Step 4    | <b>igmp explicit-tracking</b><br><b>Example:</b><br>RP/0/RSP0/CPU0:router(config-dynamic-template-type)# igmp explicit-tracking | Enables IGMPv3 explicit host tracking.  |
| Step 5    | <b>igmp query-interval</b> <i>value</i><br><b>Example:</b>  | Sets the query-interval in seconds for igmp.<br><br><b>Note</b><br>The igmp query-interval value, in seconds, should be in the range from 1 to 3600. With 16000 PPPoE subscribers |

|               | Command or Action  | Purpose  |
|---------------|--|--|
|               | RP/0/RSP0/CPU0:router(config-dynamic-template-type)#<br>igmp query-interval 60   | or less, the recommended value, that also the default, is 60 seconds.  |
| <b>Step 6</b> | <b>igmp query-max-response-time</b> <i>query-response-value</i><br><br><b>Example:</b><br><br>RP/0/RSP0/CPU0:router(config-dynamic-template-type)#<br>igmp query-max-response-time 4 | Sets the query-max-response-time in seconds for igmp.<br><br><b>Note</b><br>The igmp query-interval value, in seconds, is in the range from 1 to 12.   |
| <b>Step 7</b> | Use the <b>commit</b> or <b>end</b> command.   | <b>commit</b> —Saves the configuration changes and remains within the configuration session.<br><br><b>end</b> —Prompts user to take one of these actions: <ul style="list-style-type: none"> <li>• <b>Yes</b> — Saves configuration changes and exits the configuration session.</li> <li>• <b>No</b> —Exits the configuration session without committing the configuration changes.</li> <li>• <b>Cancel</b> —Remains in the configuration session, without committing the configuration changes.</li> </ul> |

### Configuring IGMP for Subscriber Interfaces: An example

```
dynamic-template type ppp foo
igmp explicit-tracking
igmp query-interval 60
igmp query-max-response-time 4
!
!
end
```

## IGMP QoS Correlation for IPoE Subscribers

From Cisco IOS XR Software Release 6.2.1 and later, the IGMP QoS correlation feature is extended to IPoE subscribers, in addition to PPPoE subscribers.

Use **mcast ipv4 qos-correlation** command to enable IGMP QoS correlation feature.

### Running Configuration

```
/* IGMP configuration */
router igmp
 traffic profile MCAST_QOS_CVLAN
 maximum groups-per-interface 32000
 version 2
 query-timeout 60
 query-interval 600
 query-max-response-time 10
 maximum groups 75000
 unicast-qos-adjust holdoff 5
 unicast-qos-adjust download-interval 500
```

```

unicast-qos-adjust adjustment-delay 1

/* Route policy configuration */
route-policy MCAST_QOS_CVLAN
  if destination in (225.0.0.0/8 le 32) then
    set weight 2000
  endif
end-policy

/* Dynamic Template Configuration for IP subscriber*/
ipv4 unnumbered Loopback4
ipv6 enable
multicast ipv4 qos-correlation

/* Input policy-map applied to Bundle-Ether1.1.ip199 */

policy-map parent_policy_ingress_10mb
  class CLASS_IN_1
    service-policy SET_EXP_INGRESS
    police rate 1 mbps
  !
  class CLASS_IN_2
    service-policy SET_EXP_INGRESS
    police rate 10 mbps
  !
  class class-default
  !

/* Output policy-map applied to Bundle-Ether1.1.ip199 */

policy-map parent_policy_egress_10mb
  class class-default
    service-policy child_policy_egress_1mb
    shape average 10 mbps
  !

/* Child policy-map(s) of policy-map parent_policy_egress_10mb */

policy-map child_policy_egress_1mb
  class class-default
    bandwidth 1 mbps
  !

```

## Verification

```

RP/0/RSP0/CPU0:router#show qos interface bundle-Ether 1.1.ip199 output

Bandwidth configured: 10000 kbps Bandwidth programed: 10000 kbps
ANCP user configured: 0 kbps ANCP programed in HW: 0 kbps
Port Shaper programed in HW: 0 kbps
Policy: parent_policy_egress_10mb Total number of classes: 2
-----
Level: 0 Policy: parent_policy_egress_10mb Class: class-default
QueueID: N/A
Shape CIR : NONE

Shape PIR Profile : 0/3(S) Scale: 156 PIR: 9984 kbps PBS: 124800 bytes

```

```
WFQ Profile: 0/9 Committed Weight: 10 Excess Weight: 10
Bandwidth: 0 kbps, BW sum for Level 0: 0 kbps, Excess Ratio: 1

Level: 1 Policy: child_policy_egress_1mb Class: class-default
Parent Policy: parent_policy_egress_10mb Class: class-default
QueueID: 650 (Priority Normal)
Queue Limit: 126 kbytes Abs-Index: 29 Template: 0 Curve: 0
Shape CIR Profile: INVALID
WFQ Profile: 0/81 Committed Weight: 101 Excess Weight: 101

Bandwidth: 1000 kbps, BW sum for Level 1: 1000 kbps, Excess Ratio: 1
```

After IGMP join happens:

```
RP/0/RSP0/CPU0:router#show qos interface bundle-Ether 1.1.ip199 output

Bandwidth configured: 10000 kbps Bandwidth programed: 10000 kbps
- - -
- - -
Shape CIR : NONE

Shape PIR Profile : 0/3(S) Scale: 156 PIR: 7984 kbps PBS: 124800 bytes

WFQ Profile: 0/9 Committed Weight: 10 Excess Weight: 10
- - -
- - -
WFQ Profile: 0/81 Committed Weight: 101 Excess Weight: 101

Bandwidth: 1000 kbps, BW sum for Level 1: 1000 kbps, Excess Ratio: 1
```

## IGMP Accounting

The Internet Group Management Protocol (IGMP) accounting feature enables BNG to maintain a statistics file to log the instances of subscriber joining, or leaving a multicast group. The file's format is:

```
harddisk:/usr/data/igmp/accounting.dat.<Node ID>.<YYMMDD>
```

where

- Node ID is the name of the node that generates the file; for example, RP/0/RSP0/CPU0.
- YY is the year, MM is the month, and DD is the day.

An example of the statistics file name is:

```
harddisk:/usr/data/igmp/accounting.dat.RP_0_RSP0_CPU0.101225
```

The statistics file is stored on the route processor (RP) that is active. If a failover event occurs, then a new file is created on the new active RP, and no attempt is made to mirror the data between the active and the standby RP. Thus, the statistics files must be retrieved from both the active and standby RPs.

By default, the IGMP Accounting feature adds one file each day. To avoid exhausting disk space, you can specify in how many files, or for how many days, data should be retained, see [Configuring IGMP Accounting, on page 39](#). Files older than the specified period are deleted, and the data is discarded from BNG. The maximum size of each file should be no more than 250 MB.

## Configuring IGMP Accounting

Perform this task to configure the IGMP accounting.

### SUMMARY STEPS

1. **configure**
2. **router igmp**
3. **accounting [ max-history ] days**
4. Use the **commit** or **end** command.
5. **show igmp interface**

### DETAILED STEPS

#### Procedure

|               | Command or Action  | Purpose  |
|---------------|--|--|
| <b>Step 1</b> | <b>configure</b><br><br><b>Example:</b><br><br>RP/0/RSP0/CPU0:router# <b>configure</b>   | Enters global configuration mode.  |
| <b>Step 2</b> | <b>router igmp</b><br><br><b>Example:</b><br><br>RP/0/RSP0/CPU0:router(config)# <b>router igmp</b>   | Enter the router process for IGMP configuration mode.  |
| <b>Step 3</b> | <b>accounting [ max-history ] days</b><br><br><b>Example:</b><br><br>RP/0/RSP0/CPU0:router(config-igmp-vrfl)# <b>accounting</b><br><b>max-history 50</b> | Configures the IGMP accounting. The max-history parameter is optional and specifies how many files are kept; this number is equivalent to the number of days in the history.   |
| <b>Step 4</b> | Use the <b>commit</b> or <b>end</b> command.   | <b>commit</b> —Saves the configuration changes and remains within the configuration session.<br><br><b>end</b> —Prompts user to take one of these actions: <ul style="list-style-type: none"> <li>• <b>Yes</b> — Saves configuration changes and exits the configuration session.</li> <li>• <b>No</b> —Exits the configuration session without committing the configuration changes.</li> <li>• <b>Cancel</b> —Remains in the configuration session, without committing the configuration changes.</li> </ul> |
| <b>Step 5</b> | <b>show igmp interface</b><br><br><b>Example:</b><br><br>RP/0/RSP0/CPU0:router# <b>show igmp interface</b>   | (Optional) Displays IGMP interface information.  |

### Configuring IGMP Accounting: An example

```
configure
router igmp
accounting max-history 45
!
!
end
```

## DAPS Support

A Distributed Address Pool Service (DAPS) allows address pools to be shared between DHCP processes that run on a line card (LC) and the route processor (RP). The DHCP Server and PPPoE subscribers are clients to DAPS, and are known as the DAPS client. DAPS is used to return IP address to clients only when the RADIUS attributes contain the attribute "Pool Name". If the RADIUS attribute for a subscriber contains a fixed address, then the client does not contact DAPS for its IP address.

DAPS runs in two forms, as DAPS server on the RP, and as DAPS-Proxy on the LC. The RP has an in-build DAPS-Proxy module. This model ensures that all DAPS clients always talk to the DAPS-Proxy. The DAPS-Proxy instances talk to the central DAPS-Server on the RP for address assignments and other requests. DAPS-Proxy runs on all the LCs in the system. The DAPS-Proxy running on an LC can service multiple clients, from that LC; for example, PPP, DHCPv6, IPv6ND. DAPS serves multiple DAPS clients on two or more nodes. A separate DAPS-Proxy process runs on each node and connects locally to each DAPS Client.

DAPS supports dynamic IPv4 and IPv6 address allocation by pool name. For more information about configuring IPv4 DAPS, see [Configuring IPv4 Distributed Address Pool Service, on page 40](#). To create a configuration pool for IPv6, see [Creating a Configuration Pool Submode, on page 42](#).

You can configure various DAPS IPv6 parameters in the IPv6 configuration submode. You can configure the subnet number and mask for an IPv6 address pool, for more information, see [Configuring the Subnet Number and Mask for an Address Pool, on page 43](#). You can specify parameters such as a range of IPv6 addresses. For more information, see [Specifying a Range of IPv6 Addresses, on page 45](#). To specify a utilization threshold, see [Specifying a Utilization Threshold, on page 46](#). To specify a set of prefixes or addresses inside a subnet, see [Specifying a Set of Addresses or Prefixes Inside a Subnet, on page 49](#). You can also specify the length of a prefix. For more information, see [Specifying the Length of the Prefix, on page 48](#).

## Configuring IPv4 Distributed Address Pool Service

Perform this task to configure IPv4 distributed address pool service (DAPS).

### SUMMARY STEPS

1. **configure**
2. **pool ipv4** *ipv4-pool-name*
3. **address-range** *first\_address second\_address*
4. **pool vrf** *vrf-name* **ipv4** *ipv4-pool-name* {**address-range** *address-range*}
5. Use the **commit** or **end** command.



## DETAILED STEPS

## Procedure

|               | Command or Action  | Purpose  |
|---------------|--|--|
| <b>Step 1</b> | <b>configure</b><br><b>Example:</b><br>RP/0/RSP0/CPU0:router# configure  | Enters global configuration mode.  |
| <b>Step 2</b> | <b>pool ipv4 ipv4-pool-name</b><br><b>Example:</b><br>RP/0/RSP0/CPU0:router(config)# pool ipv4 pool1   | Configures IPv4 pool name.   |
| <b>Step 3</b> | <b>address-range first_address second_address</b><br><b>Example:</b><br>RP/0/RSP0/CPU0:router(config-pool-ipv4)# address-range 1.1.1.1 9.8.9.8   | Configures the address range for allocation.   |
| <b>Step 4</b> | <b>pool vrf vrf-name ipv4 ipv4-pool-name {address-range address-range}</b><br><b>Example:</b><br>RP/0/RSP0/CPU0:router(config)# pool vrf vrf1 ipv4 pool1 address-range 1.1.1.1 9.8.9.8 | Configures IPv4 pool name.   |
| <b>Step 5</b> | Use the <b>commit</b> or <b>end</b> command.   | <b>commit</b> —Saves the configuration changes and remains within the configuration session.<br><b>end</b> —Prompts user to take one of these actions: <ul style="list-style-type: none"> <li>• <b>Yes</b> — Saves configuration changes and exits the configuration session.</li> <li>• <b>No</b> —Exits the configuration session without committing the configuration changes.</li> <li>• <b>Cancel</b> —Remains in the configuration session, without committing the configuration changes.</li> </ul> |

## Configuring IPv4 Distributed Address Pool Service: An example

```

pool ipv4 pool1
address-range 1.1.1.1 9.8.9.8
pool vrf vrf1 ipv4 pool1 address-range 1.1.1.1 9.8.9.8
!
!
end

```

## Creating a Configuration Pool Submode

Perform this task to create and enable an IPv6 configuration pool submode for a default VRF and for a specific VRF.

### SUMMARY STEPS

1. **configure**
2. **pool ipv6** *ipv6-pool-name*
3. Use the **commit** or **end** command.
4. **configure**
5. **pool vrf** *vrf\_name* **ipv6** *ipv6-pool-name*
6. Use the **commit** or **end** command.

### DETAILED STEPS

| Procedure |   |  |
|-----------|---|--|
|           | Command or Action   | Purpose  |
| Step 1    | <b>configure</b><br><b>Example:</b><br>RP/0/RSP0/CPU0:router# configure                                     | Enters global configuration mode.  |
| Step 2    | <b>pool ipv6</b> <i>ipv6-pool-name</i><br><b>Example:</b><br>RP/0/RSP0/CPU0:router(config)# pool ipv6 pool1 | Creates the IPv6 pool name for a default VRF and enters the pool IPv6 configuration submode.   |
| Step 3    | Use the <b>commit</b> or <b>end</b> command.  | <b>commit</b> —Saves the configuration changes and remains within the configuration session.<br><b>end</b> —Prompts user to take one of these actions: <ul style="list-style-type: none"> <li>• <b>Yes</b> — Saves configuration changes and exits the configuration session.</li> <li>• <b>No</b> —Exits the configuration session without committing the configuration changes.</li> <li>• <b>Cancel</b> —Remains in the configuration session, without committing the configuration changes.</li> </ul> |
| Step 4    | <b>configure</b><br><b>Example:</b><br>RP/0/RSP0/CPU0:router# configure                                     | Enters global configuration mode.  |

|               | Command or Action  | Purpose  |
|---------------|--|--|
| <b>Step 5</b> | <b>pool vrf</b> <i>vrf_name</i> <b>ipv6</b> <i>ipv6-pool-name</i><br><b>Example:</b><br><pre>RP/0/RSP0/CPU0:router(config)# pool vrf vrf1 ipv6 pool1</pre> | Creates the IPv6 pool name for a specific VRF and enters the pool IPv6 configuration submenu.  |
| <b>Step 6</b> | Use the <b>commit</b> or <b>end</b> command.   | <b>commit</b> —Saves the configuration changes and remains within the configuration session.<br><b>end</b> —Prompts user to take one of these actions: <ul style="list-style-type: none"> <li>• <b>Yes</b> — Saves configuration changes and exits the configuration session.</li> <li>• <b>No</b> —Exits the configuration session without committing the configuration changes.</li> <li>• <b>Cancel</b> —Remains in the configuration session, without committing the configuration changes.</li> </ul> |

### Creating a Configuration Pool Submode: An example

```
configure
pool ipv6 pool1 (default vrf)
!
!
configure
pool vrf vrf1 ipv6 pool1 (for a specific vrf)
!
!
end
```

## Configuring the Subnet Number and Mask for an Address Pool

Perform this task to create the subnet number and mask for an IPv6 address pool.

### SUMMARY STEPS

1. **configure**
2. **pool vrf** *vrf\_name* **ipv6** *ipv6-pool-name*
3. **prefix-length** *value*
4. **network** *subnet*
5. **utilization-mark** **high** *value* **low** *value*
6. **exclude** *low\_ip\_address* *high\_ip\_address*
7. Use the **commit** or **end** command.

## DETAILED STEPS

## Procedure

|               | Command or Action  | Purpose  |
|---------------|--|--|
| <b>Step 1</b> | <b>configure</b><br><b>Example:</b><br>RP/0/RSP0/CPU0:router# configure  | Enters global configuration mode.  |
| <b>Step 2</b> | <b>pool vrf vrf_name ipv6 ipv6-pool-name</b><br><b>Example:</b><br>RP/0/RSP0/CPU0:router(config)# pool vrf default<br>ipv6 test                | Creates the IPv6 pool name for a specific VRF and enters the pool IPv6 configuration submode.  |
| <b>Step 3</b> | <b>prefix-length value</b><br><b>Example:</b><br>RP/0/RSP0/CPU0:router(config-pool-ipv6)# prefix-length<br>120                                 | Specifies the length of the prefix that is assigned to the clients. The value of the prefix length ranges from 1 to 128.   |
| <b>Step 4</b> | <b>network subnet</b><br><b>Example:</b><br>RP/0/RSP0/CPU0:router(config-pool-ipv6)# network<br>1101:1::/114                                   | Specifies a set of addresses or prefixes inside a subnet.<br><b>Note</b><br>The <b>prefix-length</b> command must be mandatorily configured whenever the <b>network</b> command is used.   |
| <b>Step 5</b> | <b>utilization-mark high value low value</b><br><b>Example:</b><br>RP/0/RSP0/CPU0:router(config-pool-ipv6)# utilization-mark<br>high 70 low 30 | Specifies a utilization threshold in the pool IPv6 submode. The high and low values are represented as percentages between 0 and 100.  |
| <b>Step 6</b> | <b>exclude low_ip_address high_ip_address</b><br><b>Example:</b><br>RP/0/RSP0/CPU0:router(config-pool-ipv6)# exclude<br>1101:1::100 ::         | Specifies a range of IPv6 addresses or prefixes that DAPS must not assign to clients. The high and low values are represented as percentages between 0 and 100.<br><b>Note</b><br>Multiple exclude commands are allowed within a pool. To exclude a single address, <i>&lt;high_ip_address&gt;</i> can be omitted. |
| <b>Step 7</b> | Use the <b>commit</b> or <b>end</b> command.   | <b>commit</b> —Saves the configuration changes and remains within the configuration session.<br><b>end</b> —Prompts user to take one of these actions: <ul style="list-style-type: none"> <li>• <b>Yes</b> — Saves configuration changes and exits the configuration session.</li> </ul>                           |

|  | Command or Action | Purpose  |
|--|-------------------|--|
|  |                   | <ul style="list-style-type: none"> <li>• <b>No</b> —Exits the configuration session without committing the configuration changes.</li> <li>• <b>Cancel</b> —Remains in the configuration session, without committing the configuration changes.</li> </ul> |

### Configuring the Subnet Number and Mask for an Address Pool: An example

```

configure
pool vrf default ipv6 test
prefix-length 120
network 1101:1::/114
utilization-mark high 70 low 30
exclude 1101:1::100 ::
!
!
end

```

## Specifying a Range of IPv6 Addresses

Perform this task to specify a range of IPv6 addresses within a pool.

### SUMMARY STEPS

1. **configure**
2. **pool vrf** *vrf\_name* **ipv6** *ipv6-pool-name*
3. **address-range** *low\_ip\_address* *high\_ip\_address*
4. Use the **commit** or **end** command.

### DETAILED STEPS

#### Procedure

|               | Command or Action   | Purpose   |
|---------------|---|---|
| <b>Step 1</b> | <b>configure</b><br><br><b>Example:</b><br><br>RP/0/RSP0/CPU0:router# configure   | Enters global configuration mode.   |
| <b>Step 2</b> | <b>pool vrf</b> <i>vrf_name</i> <b>ipv6</b> <i>ipv6-pool-name</i><br><br><b>Example:</b><br><br>RP/0/RSP0/CPU0:router(config)# pool vrf vrf1 ipv6<br>addr_vrf | Creates the IPv6 pool name for a specific VRF and enters the pool IPv6 configuration submenu. |

|               | Command or Action   | Purpose  |
|---------------|---|--|
| <b>Step 3</b> | <b>address-range</b> <i>low_ip_address high_ip_address</i><br><b>Example:</b><br><pre>RP/0/RSP0/CPU0:router(config-pool-ipv6)# address-range 1234::2 1234::3e81</pre> | Specifies the range of IPv6 addresses within a pool. Multiple address-ranges are allowed within a pool.  |
| <b>Step 4</b> | Use the <b>commit</b> or <b>end</b> command.  | <b>commit</b> —Saves the configuration changes and remains within the configuration session.<br><b>end</b> —Prompts user to take one of these actions: <ul style="list-style-type: none"> <li>• <b>Yes</b> — Saves configuration changes and exits the configuration session.</li> <li>• <b>No</b> —Exits the configuration session without committing the configuration changes.</li> <li>• <b>Cancel</b> —Remains in the configuration session, without committing the configuration changes.</li> </ul> |

### Specifying a Range of IPv6 Addresses: An example

```
configure
pool vrf vrf1 ipv6 addr_vrf
address-range 1234::2 1234::3e81
!
!
end
```

## Specifying a Utilization Threshold

Perform this task to specify a utilization threshold for a specific VRF in the pool IPv6 submode.

### SUMMARY STEPS

1. **configure**
2. **pool vrf** *vrf\_name* **ipv6** *ipv6-pool-name*
3. **prefix-length** *value*
4. **network** *subnet*
5. **utilization-mark** **high** *value* **low** *value*
6. Use the **commit** or **end** command.

## DETAILED STEPS

## Procedure

|               | Command or Action  | Purpose  |
|---------------|--|--|
| <b>Step 1</b> | <b>configure</b><br><b>Example:</b><br>RP/0/RSP0/CPU0:router# configure  | Enters global configuration mode.  |
| <b>Step 2</b> | <b>pool vrf vrf_name ipv6 ipv6-pool-name</b><br><b>Example:</b><br>RP/0/RSP0/CPU0:router(config)# pool vrf default<br>ipv6 test                | Creates the IPv6 pool name for a specific VRF and enters the pool IPv6 configuration submode.  |
| <b>Step 3</b> | <b>prefix-length value</b><br><b>Example:</b><br>RP/0/RSP0/CPU0:router(config-pool-ipv6)# prefix-length<br>120                                 | Specifies the length of the prefix that is assigned to the clients. The value of the prefix length ranges from 1 to 128.   |
| <b>Step 4</b> | <b>network subnet</b><br><b>Example:</b><br>RP/0/RSP0/CPU0:router(config-pool-ipv6)# network<br>1101:1::/114                                   | Specifies a set of addresses or prefixes inside a subnet.<br><b>Note</b><br>The <b>prefix-length</b> command should be mandatorily configured whenever the <b>network</b> command is used.   |
| <b>Step 5</b> | <b>utilization-mark high value low value</b><br><b>Example:</b><br>RP/0/RSP0/CPU0:router(config-pool-ipv6)# utilization-mark<br>high 70 low 30 | Specifies a utilization threshold in the pool IPv6 submode. The high and low values are represented as percentages between 0 and 100.  |
| <b>Step 6</b> | Use the <b>commit</b> or <b>end</b> command.   | <b>commit</b> —Saves the configuration changes and remains within the configuration session.<br><b>end</b> —Prompts user to take one of these actions: <ul style="list-style-type: none"> <li>• <b>Yes</b> — Saves configuration changes and exits the configuration session.</li> <li>• <b>No</b> —Exits the configuration session without committing the configuration changes.</li> <li>• <b>Cancel</b> —Remains in the configuration session, without committing the configuration changes.</li> </ul> |

### Specifying a Utilization Threshold: An example

```
configure
pool vrf default ipv6 test
prefix-length 120
network 1101:1::/114
utilization-mark high 70 low 30
!
!
end
```

## Specifying the Length of the Prefix

Perform this task to specify the length of the prefix that is assigned to the clients.

### SUMMARY STEPS

1. **configure**
2. **pool vrf** *vrf\_name* **ipv6** *ipv6-pool-name*
3. **prefix-length** *value*
4. **prefix-range** *low\_ipv6\_prefix* *high\_ipv6\_prefix*
5. Use the **commit** or **end** command.

### DETAILED STEPS

| Procedure     |   |  |
|---------------|---|--|
|               | Command or Action   | Purpose  |
| <b>Step 1</b> | <b>configure</b><br><b>Example:</b><br>RP/0/RSP0/CPU0:router# configure   | Enters global configuration mode.  |
| <b>Step 2</b> | <b>pool vrf</b> <i>vrf_name</i> <b>ipv6</b> <i>ipv6-pool-name</i><br><b>Example:</b><br>RP/0/RSP0/CPU0:router(config)# pool vrf vrf1 ipv6<br>prefix_vrf | Creates the IPv6 pool name for a specific VRF and enters the pool IPv6 configuration submode.                            |
| <b>Step 3</b> | <b>prefix-length</b> <i>value</i><br><b>Example:</b><br>RP/0/RSP0/CPU0:router(config-pool-ipv6)# prefix-length<br>64                                    | Specifies the length of the prefix that is assigned to the clients. The value of the prefix length ranges from 1 to 128. |
| <b>Step 4</b> | <b>prefix-range</b> <i>low_ipv6_prefix</i> <i>high_ipv6_prefix</i><br><b>Example:</b>   | Specifies a range of IPv6 address prefixes for a specific VRF in the pool IPv6 configuration mode.<br><b>Note</b>        |



|               | Command or Action  | Purpose  |
|---------------|--|--|
|               | RP/0/RSP0/CPU0:router(config-pool-ipv6)# prefix-range 9fff:1:: 9fff:1:0:3e7f:: | The <b>prefix-length</b> must be mandatorily configured whenever <b>prefix-range</b> is configured.  |
| <b>Step 5</b> | Use the <b>commit</b> or <b>end</b> command.                                   | <b>commit</b> —Saves the configuration changes and remains within the configuration session.<br><b>end</b> —Prompts user to take one of these actions: <ul style="list-style-type: none"> <li>• <b>Yes</b> — Saves configuration changes and exits the configuration session.</li> <li>• <b>No</b> —Exits the configuration session without committing the configuration changes.</li> <li>• <b>Cancel</b> —Remains in the configuration session, without committing the configuration changes.</li> </ul> |

### Specifying the Length of the Prefix that is Assigned to the Clients: An example

```
configure
pool vrf vrf1 ipv6 prefix_vrf
prefix-length 64
prefix-range 9fff:1:: 9fff:1:0:3e7f::
!
!
end
```

## Specifying a Set of Addresses or Prefixes Inside a Subnet

Perform this task to specify a set of addresses or prefixes inside a subnet in the pool IPv6 configuration submode.

### SUMMARY STEPS

1. **configure**
2. **pool vrf** *vrf\_name* **ipv6** *ipv6-pool-name*
3. **prefix-length** *value*
4. **network** *subnet*
5. **utilization-mark** **high** *value* **low** *value*
6. **exclude** *low\_ip\_address* *high\_ip\_address*
7. Use the **commit** or **end** command.

## DETAILED STEPS

## Procedure

|               | Command or Action  | Purpose   |
|---------------|--|---|
| <b>Step 1</b> | <b>configure</b><br><b>Example:</b><br>RP/0/RSP0/CPU0:router# configure  | Enters global configuration mode.   |
| <b>Step 2</b> | <b>pool vrf vrf_name ipv6 ipv6-pool-name</b><br><b>Example:</b><br>RP/0/RSP0/CPU0:router(config)# pool vrf default<br>ipv6 test                | Creates the IPv6 pool name for a specific VRF and enters the pool IPv6 configuration submode.   |
| <b>Step 3</b> | <b>prefix-length value</b><br><b>Example:</b><br>RP/0/RSP0/CPU0:router(config-pool-ipv6)# prefix-length<br>120                                 | Specifies the length of the prefix that is assigned to the clients. The value of the prefix length ranges from 1 to 128.  |
| <b>Step 4</b> | <b>network subnet</b><br><b>Example:</b><br>RP/0/RSP0/CPU0:router(config-pool-ipv6)# network<br>1101:1::/114                                   | Specifies a set of addresses or prefixes inside a subnet.<br><b>Note</b><br>The <b>prefix-length</b> command should be mandatorily configured whenever the <b>network</b> command is used.  |
| <b>Step 5</b> | <b>utilization-mark high value low value</b><br><b>Example:</b><br>RP/0/RSP0/CPU0:router(config-pool-ipv6)# utilization-mark<br>high 70 low 30 | Specifies a utilization threshold in the pool IPv6 submode. The high and low values are represented as percentages between 0 and 100.   |
| <b>Step 6</b> | <b>exclude low_ip_address high_ip_address</b><br><b>Example:</b><br>RP/0/RSP0/CPU0:router(config-pool-ipv6)# exclude<br>1101:1::100 ::         | Specifies a range of IPv6 addresses or prefixes that DAPS must not assign to clients. The high and low values are represented as percentages between 0 and 100.<br><b>Note</b><br>Multiple exclude commands are allowed within a pool. To exclude a single address, <high_ip_address> can be omitted. |
| <b>Step 7</b> | Use the <b>commit</b> or <b>end</b> command.   | <b>commit</b> —Saves the configuration changes and remains within the configuration session.<br><b>end</b> —Prompts user to take one of these actions: <ul style="list-style-type: none"> <li>• <b>Yes</b> — Saves configuration changes and exits the configuration session.</li> </ul>              |

|  | Command or Action | Purpose  |
|--|-------------------|--|
|  |                   | <ul style="list-style-type: none"> <li>• <b>No</b> —Exits the configuration session without committing the configuration changes.</li> <li>• <b>Cancel</b> —Remains in the configuration session, without committing the configuration changes.</li> </ul> |

### Specifying a Set of Addresses or Prefixes Inside a Subnet: An example

```

configure
pool vrf default ipv6 test
prefix-length 120
network 1101:1::/114
utilization-mark high 70 low 30
exclude 1101:1::100 ::
!
!
end

```

## Dynamic Modification of DAPS Pool

**Table 3: Feature History Table**

| Feature Name                      | Release Information | Feature Description  |
|-----------------------------------|---------------------|--|
| Dynamic Modification of DAPS Pool | Release 7.4.1       | <p>A Distributed Address Pool Service (DAPS) provides dynamic IP address allocation to the BNG subscriber. This feature allows you to modify the DAPS pool configuration in live networks without bringing down the interface or the BNG subscriber session. You can dynamically release the IP address, and thereby release the active subscriber session. This functionality in turn helps you to configure a new IP address pool with the same IP address range or a different one that can be used for a new subscriber.</p> <p>This feature introduces the <b>pool onfly pppoe</b> command.</p> |

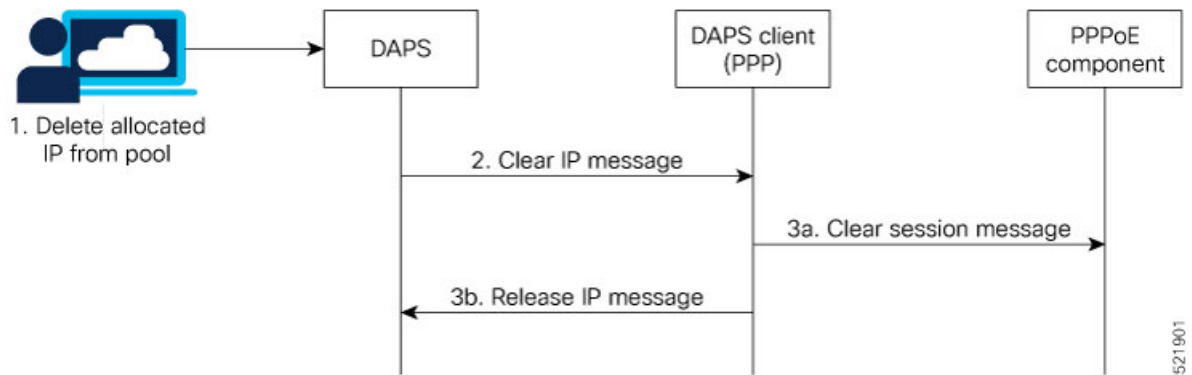
A Distributed Address Pool Service (DAPS) supports dynamic IP address allocation to the BNG subscriber. With the introduction of dynamic modification of DAPS pool feature, you can modify the IP address pool configuration on the fly without bringing down the interface or the subscriber session.

The following is the expected behavior when you dynamically modify the DAPS pool configuration:

- If you reduce the IP address range, and if the number of subscriber sessions is more than the remaining IP addresses in the pool, then the system releases those additional subscribers to match the remaining numbers in the pool.
- If you increase the IP address range, then there is no impact to the already allocated IP addresses.
- If you remove the pool configuration altogether, then the system releases all the allocated IP addresses.

### Call Flow of Dynamic Modification of DAPS Pool

Figure 2: Call Flow of Dynamic Modification of DAPS Pool



The call flow of dynamic modification of DAPS pool involves these steps within the router components:

1. The network administrator edits the DAPS pool configuration on BNG router and deletes an IP address from the address pool.
2. The DAPS sends a *CLEAR IP* message to the DAPS client (PPP).
3. **a:** The DAPS client in turn sends a *CLEAR SESSION* message to the PPPoE component to bring down the subscriber session. The PPPoE component then clears the sessions, and returns a *RELEASE IP* message to the DAPS client.  
**b:** The DAPS client forwards this *RELEASE IP* message to DAPS, and DAPS releases that IP address.  
 Meanwhile, the PPPoE component continues with the subscriber session deletion process, and the session eventually gets deleted.

### Restrictions

These restrictions apply to dynamic modification of DAPS pool feature:

- For the subscriber session to be released after the configuration changes are done, you may have to wait for approximately 5 to 20 minutes, depending on the number of IP addresses allocated from an address pool.
- The support is for PPPoE sessions; not for IPoE sessions.
- Subscriber redundancy group (SRG) is not supported.

## How to Enable Dynamic Modification of DAPS Pool

To enable dynamic modification of DAPS pool, use the **pool onfly pppoe** command in Global Configuration mode.

### Configuration Example

```
Router#configure
Router(config)#pool onfly pppoe
Router(config)#commit
```

### Running Configuration

```
pool onfly pppoe
!
```

### Verification

This command output shows the current IP address pool configuration:

```
Router#show run pool
pool vrf default ipv4 testv4
address-range 192.168.10.10 192.168.10.110
!
```

This command output displays the pool statistics:

```
Router#show pool statistics
Mon Jun 14 11:16:23.306 UTC
Debug stats:
alloc_req_msg_rcv: 1
alloc_rsp_msg_send: 1
shadow_ntfy_msg_rcv: 5
shadow_replay_req_msg_send: 1
shadow_replay_req_msg_rcv: 2
shadow_replay_end_msg_send: 2
shadow_replay_end_msg_rcv: 1
shadow_upload_req_msg_send: 1
shadow_upload_req_msg_rcv: 1
shadow_purge_msg_rcv: 1
proxy_resync_complete_msg_send: 5
shadow_alloc_create_rcv: 5
```

### Associated Commands

- **pool onfly pppoe**

## HTTP Redirect Using PBR

The HTTP Redirect (HTTPR) feature is used to redirect subscriber traffic to a destination other than the one to which it was originally destined. The HTTPR feature is implemented using Policy Based Routing (PBR) that makes packet forwarding decisions based on the policy configuration, instead of routing protocols. The HTTPR feature is implemented by sending an HTTP redirect response, which contains the redirect URL, back

to the HTTP client that originally sent the request. Thereafter, the HTTP client sends requests to the redirected URL. HTTPR is supported for both IPv4 and IPv6 subscribers.

The most common use of HTTPR feature is for initial logon. In some cases, it is not possible to uniquely identify a subscriber and authorize them. This happens when the subscriber is using a shared network access medium to connect to the network. In such cases, the subscriber is allowed to access the network but restricted to what is known as an "open-garden". An open-garden is a collection of network resources that subscribers can access as long as they have physical access to the network. Subscribers do not have to provide authentication information before accessing the web sites in an open-garden.

When subscribers try to access resources outside the open-garden (which is called the "walled-garden"), they are redirected to a web logon portal. The walled-garden refers to a collection of web sites or networks that subscribers can access after providing minimal authentication information. The web logon portal requires the subscriber to login using a username and password. Thereafter, the web logon portal sends an account-logon CoA to BNG with user credentials. On successful authentication of these credentials, BNG disables the redirect and applies the correct subscriber policies for direct network access. Other uses of HTTPR include periodic redirection to a web portal for advertising reasons, redirection to a billing server, and so on.

The PBR function is configured in its own dynamic template. If the dynamic template contains other functions too, then the PBR policy that redirects packets must be deactivated using a CoA.

BNG maintains HTTP redirect statistics counters that track the number of packets that are being either redirected or dropped. The HTTP protocol uses some status codes to implement HTTPR. Currently, the redirect codes 302 (for HTTP version 1.0) and 307 (for HTTP version 1.1) are supported on BNG.

From Cisco IOS XR Software Release 6.6.3 onwards, the HTTP redirect feature on BNG is enhanced to support pseudowire headend (PWHE) subscriber sessions as well. This enhancement is available along with subscriber redundancy group (SRG) support, thereby providing geographical redundancy for such sessions.

The process of configuring HTTPR involves these stages:

- Creating access lists that define the redirected and open-garden permissions. See, [Identifying HTTP Destinations for Redirection, on page 54](#).
- Creating the class-maps that uses the access list to classify the traffic as redirected, or permitted to access open-garden. See, [Configuring Class Maps for HTTP Redirection, on page 58](#).
- Creating the policy-map to define the action to be performed on the traffic classified using class-maps. See, [Configuring Policy Map for HTTP Redirect, on page 60](#).
- Creating the dynamic template to apply the service policy. See [Configuring Dynamic Template for Applying HTTPR Policy, on page 62](#).

To configure a web logon that specifies a time limit to perform the authentication, see [Configuring Web Logon, on page 64](#).

## Identifying HTTP Destinations for Redirection

Perform this task to define access lists that identify http destinations that require redirection or are part of an open garden:

### SUMMARY STEPS

1. **configure**
2. **{ipv4 | ipv6}access-list** *redirect\_acl\_name*

3. Do one of the following:

- [ *sequence-number* ] { **permit** | **deny** } *source source-wildcard destination destination-wildcard* [ **precedence** *precedence* ] [ **dscp** *dscp* ] [ **fragments** ] [ *packet-length operator packet-length value* ] [ **log** | **log-input** ]
- [ *sequence-number* ] { **permit** | **deny** } *protocol {source-ipv6-prefix/prefix-length | any | host source-ipv6-address} [operator {port | protocol-port}] {destination-ipv6-prefix/prefix-length | any | host destination-ipv6-address} [operator {port | protocol-port}] [dscp value] [routing] [authen] [destopts] [fragments] [packet-length operator packet-length value] [log | log-input]*

4. Repeat Step 3 as necessary, adding statements by sequence number. Use the **no sequence-number** command to delete an entry.

5. { **ipv4** | **ipv6** } **access-list** *open\_garden\_acl*

6. Do one of the following:

- [ *sequence-number* ] { **permit** | **deny** } *source source-wildcard destination destination-wildcard* [ **precedence** *precedence* ] [ **dscp** *dscp* ] [ **fragments** ] [ *packet-length operator packet-length value* ] [ **log** | **log-input** ]
- [ *sequence-number* ] { **permit** | **deny** } *protocol {source-ipv6-prefix/prefix-length | any | host source-ipv6-address} [operator {port | protocol-port}] {destination-ipv6-prefix/prefix-length | any | host destination-ipv6-address} [operator {port | protocol-port}] [dscp value] [routing] [authen] [destopts] [fragments] [packet-length operator packet-length value] [log | log-input]*

7. Repeat Step 6 as necessary, adding statements by sequence number. Use the **no sequence-number** command to delete an entry.

8. Use the **commit** or **end** command.

## DETAILED STEPS

### Procedure

|               | Command or Action  | Purpose   |
|---------------|--|---|
| <b>Step 1</b> | <b>configure</b><br><b>Example:</b><br>RP/0/RSP0/CPU0:router# configure  | Enters global configuration mode.   |
| <b>Step 2</b> | { <b>ipv4</b>   <b>ipv6</b> } <b>access-list</b> <i>redirect_acl_name</i><br><b>Example:</b><br>RP/0/RSP0/CPU0:router(config)# ipv4 access-lists redirect_acl<br>or<br>RP/0/RSP0/CPU0:router(config)# ipv6 access-lists redirect_acl | Enters either IPv4 or IPv6 access list configuration mode and configures the named access list. |
| <b>Step 3</b> | Do one of the following:<br>• [ <i>sequence-number</i> ] { <b>permit</b>   <b>deny</b> } <i>source source-wildcard destination destination-wildcard</i>  | Specifies one or more conditions allowed or denied in IPv4 or IPv6 access list redirect_acl.    |

|               | Command or Action   | Purpose  |
|---------------|---|--|
|               | <p>[<b>precedence</b> <i>precedence</i>] [<b>dscp</b> <i>dscp</i>] [<b>fragments</b>] [<i>packet-length operator packet-length value</i>] [<b>log</b>   <b>log-input</b>]</p> <ul style="list-style-type: none"> <li>[ <i>sequence-number</i> ] {<b>permit</b>   <b>deny</b>} <i>protocol</i> {<i>source-ipv6-prefix/prefix-length</i>   <b>any</b>   <b>host</b> <i>source-ipv6-address</i>} [<i>operator</i> {<i>port</i>   <i>protocol-port</i>}] {<i>destination-ipv6-prefix/prefix-length</i>   <b>any</b>   <b>host</b> <i>destination-ipv6-address</i>} [<i>operator</i> {<i>port</i>   <i>protocol-port</i>}] [<b>dscp</b> <i>value</i>] [<i>routing</i>] [<b>authen</b>] [<b>destopts</b>] [<b>fragments</b>] [<i>packet-length operator packet-length value</i>] [<b>log</b>   <b>log-input</b>]</li> </ul> <p><b>Example:</b></p> <pre>RP/0/RSP0/CPU0:router(config-ipv4-acl)# 10 permit 172.16.0.0 0.0.255.255 RP/0/RSP0/CPU0:router(config-ipv4-acl)# 20 deny 192.168.34.0 0.0.0.255</pre> <p>or</p> <pre>RP/0/RSP0/CPU0:router(config-ipv6-acl)# 20 permit icmp any any RP/0/RSP0/CPU0:router(config-ipv6-acl)# 30 deny tcp any any gt 5000</pre> | <ul style="list-style-type: none"> <li>The optional <b>log</b> keyword causes an information logging message about the packet that matches the entry to be sent to the console.</li> <li>The optional <b>log-input</b> keyword provides the same function as the <b>log</b> keyword, except that the logging message also includes the input interface.</li> </ul> <p>or</p> <p>Specifies one or more conditions allowed or denied in IPv6 access list <code>redirect_acl</code>.</p> <ul style="list-style-type: none"> <li>Refer to the <b>deny</b> (IPv6) and <b>permit</b> (IPv6) commands for more information on filtering IPv6 traffic based on based on IPv6 option headers and optional, upper-layer protocol type information.</li> </ul> <p><b>Note</b></p> <p>Every IPv6 access list has an implicit <b>deny ipv6 any any</b> statement as its last match condition. An IPv6 access list must contain at least one entry for the implicit <b>deny ipv6 any any</b> statement to take effect.</p> |
| <b>Step 4</b> | Repeat Step 3 as necessary, adding statements by sequence number. Use the <b>no sequence-number</b> command to delete an entry.   | Allows you to revise an access list.   |
| <b>Step 5</b> | <p>{<b>ipv4</b>   <b>ipv6</b>}<b>access-list</b> <i>open_garden_acl</i></p> <p><b>Example:</b></p> <pre>RP/0/RSP0/CPU0:router(config)# ipv4 access-lists open_garden_acl</pre> <p>or</p> <pre>RP/0/RSP0/CPU0:router(config)# ipv6 access-lists open_garden_acl</pre>  | Enters either IPv4 or IPv6 access list configuration mode and configures the named access list for open garden.  |
| <b>Step 6</b> | <p>Do one of the following:</p> <ul style="list-style-type: none"> <li>[ <i>sequence-number</i> ] {<b>permit</b>   <b>deny</b>} <i>source</i> <i>source-wildcard</i> <i>destination</i> <i>destination-wildcard</i> [<b>precedence</b> <i>precedence</i>] [<b>dscp</b> <i>dscp</i>] [<b>fragments</b>] [<i>packet-length operator packet-length value</i>] [<b>log</b>   <b>log-input</b>]</li> <li>[ <i>sequence-number</i> ] {<b>permit</b>   <b>deny</b>} <i>protocol</i> {<i>source-ipv6-prefix/prefix-length</i>   <b>any</b>   <b>host</b> <i>source-ipv6-address</i>} [<i>operator</i> {<i>port</i>   <i>protocol-port</i>}] {<i>destination-ipv6-prefix/prefix-length</i>   <b>any</b>   <b>host</b> <i>destination-ipv6-address</i>} [<i>operator</i> {<i>port</i>  </li> </ul>  | <p>Specifies one or more conditions allowed or denied in IPv4 access list <code>open_garden_acl</code>.</p> <ul style="list-style-type: none"> <li>The optional <b>log</b> keyword causes an information logging message about the packet that matches the entry to be sent to the console.</li> <li>The optional <b>log-input</b> keyword provides the same function as the <b>log</b> keyword, except that the logging message also includes the input interface.</li> </ul> <p>or</p>   |



|               | Command or Action  | Purpose   |
|---------------|--|---|
|               | <p><i>protocol-port</i>] [<b>dscp value</b>] [<i>routing</i>] [<b>authen</b>] [<b>destopts</b>] [<b>fragments</b>] [<i>packet-length operator packet-length value</i>] [<b>log</b>   <b>log-input</b>]</p> <p><b>Example:</b></p> <pre>RP/0/RSP0/CPU0:router(config-ipv4-acl)# 10 permit 172.16.0.0 0.0.255.255 RP/0/RSP0/CPU0:router(config-ipv4-acl)# 20 deny 192.168.34.0 0.0.0.255</pre> <p>or</p> <pre>RP/0/RSP0/CPU0:router(config-ipv6-acl)# 20 permit icmp any any RP/0/RSP0/CPU0:router(config-ipv6-acl)# 30 deny tcp any any gt 5000</pre> | <p>Specifies one or more conditions allowed or denied in IPv6 access list <code>open_garden_acl</code>.</p> <ul style="list-style-type: none"> <li>Refer to the <b>deny</b> (IPv6) and <b>permit</b> (IPv6) commands for more information on filtering IPv6 traffic based on based on IPv6 option headers and optional, upper-layer protocol type information.</li> </ul> <p><b>Note</b><br/>Every IPv6 access list has an implicit <b>deny ipv6 any any</b> statement as its last match condition. An IPv6 access list must contain at least one entry for the implicit <b>deny ipv6 any any</b> statement to take effect.</p> |
| <b>Step 7</b> | Repeat Step 6 as necessary, adding statements by sequence number. Use the <b>no sequence-number</b> command to delete an entry.  | Allows you to revise an access list.  |
| <b>Step 8</b> | Use the <b>commit</b> or <b>end</b> command.   | <p><b>commit</b> —Saves the configuration changes and remains within the configuration session.</p> <p><b>end</b> —Prompts user to take one of these actions:</p> <ul style="list-style-type: none"> <li><b>Yes</b> — Saves configuration changes and exits the configuration session.</li> <li><b>No</b> —Exits the configuration session without committing the configuration changes.</li> <li><b>Cancel</b> —Remains in the configuration session, without committing the configuration changes.</li> </ul>   |

### Identifying HTTP Destinations for Redirection: An example

```
configure
ipv4 access-list <redirect-acl>
 10 permit tcp any any syn eq www
 20 permit tcp any any ack eq www
 30 permit tcp any any eq www
ipv4 access-group <allow-acl>
 10 permit tcp any 10.1.1.0 0.0.0.255 eq www
 20 permit tcp any 20.1.1.0 0.0.0.255 eq www
 30 permit tcp any 30.1.1.0 0.0.0.255 eq www
 40 permit udp any any eq domain
!
!
!
end

configure
ipv6 access-list <redirect-acl>
 10 permit tcp any any syn eq www
```

```

20 permit tcp any any ack eq www
30 permit tcp any any eq www
ipv6 access-group <allow-acl>
10 permit tcp any 10.1.1.0 0.0.0.255 eq www
20 permit tcp any 20.1.1.0 0.0.0.255 eq www
30 permit tcp any 30.1.1.0 0.0.0.255 eq www
40 permit udp any any eq domain
!
!
!
end

```

## Configuring Class Maps for HTTP Redirection

Perform this task to configure the class maps for HTTP redirection. It makes use of previously defined ACLs.

### Before you begin

The configuration steps mentioned in [Identifying HTTP Destinations for Redirection, on page 54](#) has to be completed before performing the configuration of the HTTPR class maps.

### SUMMARY STEPS

1. **configure**
2. **class-map type traffic match-all** *open-garden-class\_name*
3. **match [not] access-group {ipv4 | ipv6}** *open\_garden\_acl*
4. **end-class-map**
5. **class-map type traffic match-all** *http\_redirect-class\_name*
6. **match [not] access-group {ipv4 | ipv6}** *redirect\_acl*
7. **end-class-map**
8. Use the **commit** or **end** command.

### DETAILED STEPS

| Procedure     |   |   |
|---------------|---|---|
|               | Command or Action   | Purpose   |
| <b>Step 1</b> | <b>configure</b><br><br><b>Example:</b><br><br>RP/0/RSP0/CPU0:router# configure   | Enters global configuration mode.   |
| <b>Step 2</b> | <b>class-map type traffic match-all</b> <i>open-garden-class_name</i><br><br><b>Example:</b><br><br>RP/0/RSP0/CPU0:router(config)# class-map type traffic match-all CL1 | Defines a traffic class and the associated rules that match packets to the class for a open garden class. |

|               | Command or Action   | Purpose  |
|---------------|---|--|
| <b>Step 3</b> | <b>match [not] access-group {ipv4   ipv6} <i>open_garden_acl</i></b><br><br><b>Example:</b><br><br>RP/0/RSP0/CPU0:router(config-cmap)# match not<br>access-group ipv4 open_garden_acl<br><br>or<br><br>RP/0/RSP0/CPU0:router(config-cmap)# match not<br>access-group ipv6 open_garden_acl | Identifies a specified access control list (ACL) number as the match criteria for a class map.<br><br><b>Note</b><br>The redirect acl name provided in this step is the one configured in the configuration step mentioned in the prerequisites.   |
| <b>Step 4</b> | <b>end-class-map</b><br><br><b>Example:</b><br><br>RP/0/RSP0/CPU0:router(config-cmap)# end-class-map  | Ends the configuration of match criteria for the class and exits the class map configuration mode.   |
| <b>Step 5</b> | <b>class-map type traffic match-all <i>http_redirect-class_name</i></b><br><br><b>Example:</b><br><br>RP/0/RSP0/CPU0:router(config)# class-map type<br>traffic match-all RCL1   | Defines a traffic class and the associated rules that match packets to the class for an open garden class.   |
| <b>Step 6</b> | <b>match [not] access-group {ipv4   ipv6} <i>redirect_acl</i></b><br><br><b>Example:</b><br><br>RP/0/RSP0/CPU0:router(config-cmap)# match not<br>access-group ipv4 redirect-acl<br><br>or<br><br>RP/0/RSP0/CPU0:router(config-cmap)# match not<br>access-group ipv6 redirect-acl          | Identifies a specified access control list (ACL) number as the match criteria for a class map.<br><br><b>Note</b><br>The redirect acl name provided in this step is the one configured in the configuration step mentioned in the prerequisites.   |
| <b>Step 7</b> | <b>end-class-map</b><br><br><b>Example:</b><br><br>RP/0/RSP0/CPU0:router(config-cmap)# end-class-map  | Ends the configuration of match criteria for the class and exits the class map configuration mode.   |
| <b>Step 8</b> | Use the <b>commit</b> or <b>end</b> command.  | <b>commit</b> —Saves the configuration changes and remains within the configuration session.<br><br><b>end</b> —Prompts user to take one of these actions: <ul style="list-style-type: none"> <li>• <b>Yes</b> — Saves configuration changes and exits the configuration session.</li> <li>• <b>No</b> —Exits the configuration session without committing the configuration changes.</li> </ul> |

|  | Command or Action | Purpose  |
|--|-------------------|--|
|  |                   | <ul style="list-style-type: none"> <li>• <b>Cancel</b> —Remains in the configuration session, without committing the configuration changes.</li> </ul> |

### Configuring Class Maps for HTTP Redirection: An example

```

configure
class-map type traffic [match-any | match-all] <open-garden-class>
match [not] access-group ipv4 allow-acl
end-class-map

class-map type traffic [match-any | match-all] <http-redirect-class>
match [not] access-group ipv4 redirect-acl
end-class-map
!
!
!
end

configure
class-map type traffic [match-any | match-all] <open-garden-class>
match [not] access-group ipv6 allow-acl
end-class-map

class-map type traffic [match-any | match-all] <http-redirect-class>
match [not] access-group ipv6 redirect-acl
end-class-map
!
!
!
end

```

## Configuring Policy Map for HTTP Redirect

Perform this task to configure policy maps for http redirect.

### Before you begin

The configuration steps mentioned in [Identifying HTTP Destinations for Redirection, on page 54](#) and [Configuring Class Maps for HTTP Redirection, on page 58](#) have to be completed before performing the configuration of the policy-map for HTTPR.

### SUMMARY STEPS

1. **configure**
2. **policy-map type pbr** *http-redirect\_policy\_name*
3. **class type traffic** *open\_garden\_class\_name*
4. **transmit**
5. **class type traffic** *http\_redirect-class\_name*
6. **http-redirect** *redirect\_url*
7. **class class-default**

8. **drop**
9. **end-policy-map**
10. Use the **commit** or **end** command.

## DETAILED STEPS

### Procedure

|               | Command or Action  | Purpose   |
|---------------|--|---|
| <b>Step 1</b> | <b>configure</b><br><b>Example:</b><br><pre>RP/0/RSP0/CPU0:router# configure</pre>   | Enters global configuration mode.   |
| <b>Step 2</b> | <b>policy-map type pbr <i>http-redirect_policy_name</i></b><br><b>Example:</b><br><pre>RP/0/RSP0/CPU0:router(config)# policy-map type pbr RPL1</pre>   | Creates a policy map of type policy-based routing that can be attached to one or more interfaces to specify a service policy.   |
| <b>Step 3</b> | <b>class type traffic <i>open_garden_class_name</i></b><br><b>Example:</b><br><pre>RP/0/RSP0/CPU0:router(config-pmap)# class type traffic CL1</pre>    | Specifies the name of the class whose policy you want to create or change.<br><br><b>Note</b><br>The open garden acl name provided in this step is the one configured in the configuration step mentioned in the prerequisites. |
| <b>Step 4</b> | <b>transmit</b><br><b>Example:</b><br><pre>RP/0/RSP0/CPU0:router(config-pmap)# transmit</pre>  | Forwards the packet to the original destination.  |
| <b>Step 5</b> | <b>class type traffic <i>http_redirect-class_name</i></b><br><b>Example:</b><br><pre>RP/0/RSP0/CPU0:router(config-pmap)# class type traffic RCL1</pre> | Specifies the name of the class whose policy you want to create or change.<br><br><b>Note</b><br>The open garden acl name provided in this step is the one configured in the configuration step mentioned in the prerequisites. |
| <b>Step 6</b> | <b>http-redirect <i>redirect_url</i></b><br><b>Example:</b><br><pre>RP/0/RSP0/CPU0:router(config-pmap-c)# http-redirect redirect_url</pre>             | Specifies the URL to which the HTTP requests should be redirected.  |
| <b>Step 7</b> | <b>class class-default</b><br><b>Example:</b>  | Configures default classes that cannot be used with user-defined classes.   |

|                | Command or Action  | Purpose  |
|----------------|--|--|
|                | RP/0/RSP0/CPU0:router(config-pmap)# class<br>class-default   |  |
| <b>Step 8</b>  | <b>drop</b><br><b>Example:</b><br><br>RP/0/RSP0/CPU0:router(config-pmap)# drop                     | Drops the packet.  |
| <b>Step 9</b>  | <b>end-policy-map</b><br><b>Example:</b><br><br>RP/0/RSP0/CPU0:router(config-cmap)# end-policy-map | Ends the configuration of a policy map and exits the policy map configuration mode.  |
| <b>Step 10</b> | Use the <b>commit</b> or <b>end</b> command.   | <b>commit</b> —Saves the configuration changes and remains within the configuration session.<br><br><b>end</b> —Prompts user to take one of these actions: <ul style="list-style-type: none"> <li>• <b>Yes</b> — Saves configuration changes and exits the configuration session.</li> <li>• <b>No</b> —Exits the configuration session without committing the configuration changes.</li> <li>• <b>Cancel</b> —Remains in the configuration session, without committing the configuration changes.</li> </ul> |

### Configuring Policy Map for HTTP Redirect: An example

```

configure
policy-map type pbr <http-redirect-policy>
class type traffic <open-garden-class>
transmit
!
class type traffic <http-redirect-class>
http-redirect <redirect-url>
!
class class-default
drop
!
end-policy-map
!
!
end

```

## Configuring Dynamic Template for Applying HTTPR Policy

Perform this task to configure dynamic template for applying the HTTPR policy to subscriber sessions.

**Before you begin**

The configuration steps mentioned in [Configuring Policy Map for HTTP Redirect, on page 60](#) have to be completed before defining the dynamic template that uses a previously defined policy-map.



**Note** Ensure that the Dynamic template contains only the Policy Based Routing policy, so it can be easily deactivated after web login.

**SUMMARY STEPS**

1. **configure**
2. **dynamic-template type ipsubscriber** *redirect\_template\_name*
3. **service-policy type pbr** *http-redirect-policy*
4. Use the **commit** or **end** command.

**DETAILED STEPS****Procedure**

|               | Command or Action   | Purpose  |
|---------------|---|--|
| <b>Step 1</b> | <b>configure</b><br><b>Example:</b><br><pre>RP/0/RSP0/CPU0:router# configure</pre>  | Enters global configuration mode.  |
| <b>Step 2</b> | <b>dynamic-template type ipsubscriber</b> <i>redirect_template_name</i><br><b>Example:</b><br><pre>RP/0/RSP0/CPU0:router(config)# dynamic-template<br/>type ipsubscriber RDL1</pre> | Creates a dynamic template of type "ipsubscriber".   |
| <b>Step 3</b> | <b>service-policy type pbr</b> <i>http-redirect-policy</i><br><b>Example:</b><br><pre>RP/0/RSP0/CPU0:router(config-pmap)# service-policy<br/>type pbr RPL1</pre>                    | Attaches the service policy as a pbr type within a policy map created in the earlier configuration.<br><b>Note</b><br>The http redirect policy name provided in this step is the one configured in the configuration step mentioned in the prerequisites.                                |
| <b>Step 4</b> | Use the <b>commit</b> or <b>end</b> command.  | <b>commit</b> —Saves the configuration changes and remains within the configuration session.<br><b>end</b> —Prompts user to take one of these actions: <ul style="list-style-type: none"> <li>• <b>Yes</b> — Saves configuration changes and exits the configuration session.</li> </ul> |

|  | Command or Action | Purpose  |
|--|-------------------|--|
|  |                   | <ul style="list-style-type: none"> <li>• <b>No</b> —Exits the configuration session without committing the configuration changes.</li> <li>• <b>Cancel</b> —Remains in the configuration session, without committing the configuration changes.</li> </ul> |

### Configuring Dynamic Template for Applying HTTPR Policy: An example

```

configure
dynamic-template type ip <redirect-template>
service-policy type pbr <http-redirect-policy>
!
!
!
end

```

## Configuring Web Logon

Perform this task to configure Web Logon. As an example, a timer defines the maximum time permitted for authentication.

### SUMMARY STEPS

1. **configure**
2. **class-map type control subscriber match-all** *classmap\_name*
3. **match timer** *name*
4. **match authen-status authenticated**
5. **policy-map type control subscriber** *polycymap\_name*
6. **event session-start match-all**
7. **class type control subscriber** *class\_name* **do-until-failure**
8. *sequence\_number* **activate dynamic-template** *dt\_name*
9. *sequence\_number* **activate dynamic-template** *dt\_name*
10. *sequence\_number* **set-timer** *timer\_name* *value*
11. **event account-logon match-all**
12. **class type control subscriber** *class\_name* **do-until-failure**
13. *sequence\_number* **authenticate aaa list default**
14. *sequence\_number* **deactivate dynamic-template** *dt\_name*
15. *sequence\_number* **stop-timer** *timer\_name*
16. **event time-expiry match-all**
17. **class type control subscriber** *class\_name* **do-all**
18. *sequence\_number* **disconnect**
19. Use the **commit** or **end** command.



## DETAILED STEPS

## Procedure

|               | Command or Action  | Purpose   |
|---------------|--|---|
| <b>Step 1</b> | <b>configure</b><br><b>Example:</b><br>RP/0/RSP0/CPU0:router# configure  | Enters global configuration mode.   |
| <b>Step 2</b> | <b>class-map type control subscriber match-all</b><br><i>classmap_name</i><br><b>Example:</b><br>RP/0/RSP0/CPU0:router(config)# class-map type control subscriber match-all IP_UNAUTH_COND                 | Configures a subscriber control class-map with the match-all match criteria.  |
| <b>Step 3</b> | <b>match timer</b> <i>name</i><br><b>Example:</b><br>RP/0/RSP0/CPU0:router(config-cmap)# match timer AUTH_TIMER  | Configures a match criteria for the class along with timer details.   |
| <b>Step 4</b> | <b>match authen-status authenticated</b><br><b>Example:</b><br>RP/0/RSP0/CPU0:router(config-cmap)# match timer AUTH_TIMER  | Configures a match criteria for the class along with authentication status details.   |
| <b>Step 5</b> | <b>policy-map type control subscriber</b> <i>polycymap_name</i><br><b>Example:</b><br>RP/0/RSP0/CPU0:router(config)# class-map type control subscriber match-all RULE_IP_WEBSESSION                        | Configures a subscriber control policy-map.   |
| <b>Step 6</b> | <b>event session-start match-all</b><br><b>Example:</b><br>RP/0/RSP0/CPU0:router(config-pmap)# event session-start match-all   | Configures the session start policy event that runs all the matched classes.  |
| <b>Step 7</b> | <b>class type control subscriber</b> <i>class_name</i><br><b>do-until-failure</b><br><b>Example:</b><br>RP/0/RSP0/CPU0:router(config-pmap-e)# class type control subscriber class-default do-until-failure | Configures the class to which the subscriber is to be matched. When there is a match, execute all actions that follow until a failure is encountered. |
| <b>Step 8</b> | <i>sequence_number</i> <b>activate dynamic-template</b> <i>dt_name</i><br><b>Example:</b><br>RP/0/RSP0/CPU0:router(config-pmap-c)# 10 activate dynamic-template DEFAULT_IP_SERVICE                         | Activates the dynamic-template defined locally on the CLI with the specified dynamic template name.   |

|                | Command or Action  | Purpose  |
|----------------|--|--|
| <b>Step 9</b>  | <b><i>sequence_number</i> activate dynamic-template <i>dt_name</i></b><br><b>Example:</b><br>RP/0/RSP0/CPU0:router(config-pmap-c)# 10 activate dynamic-template HTTP_REDIRECT                    | Activates the dynamic-template defined locally on the CLI with the specified dynamic template name.  |
| <b>Step 10</b> | <b><i>sequence_number</i> set-timer <i>timer_name</i> <i>value</i></b><br><b>Example:</b><br>RP/0/RSP0/CPU0:router(config-pmap-c)# 10 set-timer AUTH_TIMER 4567                                  | Sets a timer to run a rule on its expiry. The timer value, specified in minutes, ranges from 0 to 4294967295.  |
| <b>Step 11</b> | <b>event account-logon match-all</b><br><b>Example:</b><br>RP/0/RSP0/CPU0:router(config-pmap)# event session-start match-all   | Configures the account logon policy event that runs all matched classes.   |
| <b>Step 12</b> | <b>class type control subscriber <i>class_name</i> do-until-failure</b><br><b>Example:</b><br>RP/0/RSP0/CPU0:router(config-pmap-e)# class type control subscriber class-default do-until-failure | Configures the class to which the subscriber is to be matched. When there is a match, execute all actions that follow, until a failure is encountered. |
| <b>Step 13</b> | <b><i>sequence_number</i> authenticate aaa list default</b><br><b>Example:</b><br>RP/0/RSP0/CPU0:router(config-pmap-c)# 10 authenticate aaa list default   | Specifies and authenticates the default AAA method list.   |
| <b>Step 14</b> | <b><i>sequence_number</i> deactivate dynamic-template <i>dt_name</i></b><br><b>Example:</b><br>RP/0/RSP0/CPU0:router(config-pmap-c)# 10 deactivate dynamic-template HTTP_REDIRECT                | Disables the timer before it expires.  |
| <b>Step 15</b> | <b><i>sequence_number</i> stop-timer <i>timer_name</i></b><br><b>Example:</b><br>RP/0/RSP0/CPU0:router(config-pmap-c)# 20 stop-timer AUTH_TIMER  | Disables the timer before it expires.  |
| <b>Step 16</b> | <b>event time-expiry match-all</b><br><b>Example:</b><br>RP/0/RSP0/CPU0:router(config-pmap)# event session-start match-all   | Configures the timer expiry policy event that runs all the matched classes.  |
| <b>Step 17</b> | <b>class type control subscriber <i>class_name</i> do-all</b><br><b>Example:</b><br>RP/0/RSP0/CPU0:router(config-pmap-e)# class type control subscriber IP_UNAUTH_COND do-all                    | Configures the class to which the subscriber has to be matched. When there is a match, execute all actions.  |

|                | Command or Action   | Purpose  |
|----------------|---|--|
| <b>Step 18</b> | <i>sequence_number</i> <b>disconnect</b><br><br><b>Example:</b><br>RP/0/RSP0/CPU0:router(config-pmap-c)# 10<br>disconnect | Disconnects the session.   |
| <b>Step 19</b> | Use the <b>commit</b> or <b>end</b> command.  | <b>commit</b> —Saves the configuration changes and remains within the configuration session.<br><br><b>end</b> —Prompts user to take one of these actions: <ul style="list-style-type: none"> <li>• <b>Yes</b> — Saves configuration changes and exits the configuration session.</li> <li>• <b>No</b> —Exits the configuration session without committing the configuration changes.</li> <li>• <b>Cancel</b> —Remains in the configuration session, without committing the configuration changes.</li> </ul> |

### Configuring Web Logon: An example

This example illustrates an IP session that is HTTP-redirected to an authentication web-portal for credentials. On successful authentication, the timer is unset. Otherwise, the subscriber gets disconnected when the timer window expires:

```

class-map type control subscriber match-all IP_UNAUTH_COND
  match timer AUTH_TIMER
  match authen-status unauthenticated

policy-map type control subscriber RULE_IP_WEBSESSION
  event session-start match-all
    class type control subscriber class-default do-until-failure
      10 activate dynamic-template DEFAULT_IP_SERVICE
      20 activate dynamic-template HTTP_REDIRECT
      30 set-timer AUTH_TIMER 5

  event account-logon match-all
    class type control subscriber class-default do-until-failure
      10 authenticate aaa list default
      15 deactivate dynamic-template HTTP_REDIRECT
      20 stop-timer AUTH_TIMER

  event timer-expiry match-all
    class type control subscriber IP_UNAUTH_COND do-all
      10 disconnect

```

## HTTP Redirect URL with Subscriber Information

The existing HTTP Redirect feature in BNG is enhanced to provide subscriber information in addition to the redirect portal address in the redirect URL. This information includes the user name of the subscriber (in a Cisco Attribute-Value-Pair named *parsed-user-name*), the IP address of the subscriber and the source-identifier of the BNG. This functionality provides a mechanism to authenticate the subscriber as well as to enhance the

web server, which in turn can be used in multiple use cases of redirect scenarios. One such use case is, providing a subscriber-specific web page to the subscriber in a redirect scenario. This feature works with both RADIUS and DIAMETER protocols.

### Cisco AVP for HTTP Redirect URL with Subscriber Information

A new Cisco Attribute-Value-Pair (AVP) named, *parsed-user-name*, is introduced in order to enable this feature. This AVP must be sent by the AAA server as part of the user profile in an Access-Accept message to BNG. The presence of this AVP in the Access-Accept message indicates whether the redirect URL to be send out from BNG must append the subscriber's username, subscriber's IP address and the BNG source-identifier or not.

### Extension Format for Redirect URL

The redirect URL with subscriber information uses this format:

```
<portal address>/index.php?u=<username>&uip=<user-ip-address>&source=<BNG source-identifier>
```

Here, *portal address* is the domain name or IP address of the redirect web server. **u** denotes the username, **uip** denotes the IP address of subscriber and **source** denotes the BNG source-identifier. Currently, the *BNG source-identifier* is mentioned as 'bng' for all BNG routers.

### Restrictions

The HTTP redirect URL with subscriber information feature is subjected to these restrictions:

- Only IPv4 address of the subscriber is supported in the redirect URL; IPv6 address is not supported.
- Only one portal or web server is supported in the redirect URL.
- The maximum size of redirect URL cannot be greater than 256 bytes (characters).
- The redirect URL includes both original and extension information of portal web server or IP address packed in the defined format.

## Use Cases of HTTP Redirect URL with Subscriber Information

In general, HTTP redirect feature can be activated dynamically or in authorization or authentication failure scenarios. This section covers various redirect scenarios for the subscriber and the expected feature behavior of HTTP redirect URL with subscriber information.

### 1. Redirect triggered by DIAMETER GX Re-Auth-Request (RAR) or RADIUS Change-of-Authorization (CoA) message

This is a use case of dynamically activating HTTP redirect feature which is observed in scenarios such as:

- A DSL subscriber who is present in the AAA database with *Treatment Status* as *redirect*.
- A Fiber to the home (FTTH) subscriber who is present in the AAA database, but without having a privileged user profile, and with 'Treatment Status' as 'redirect'.

Once the subscriber session is created by the BNG router, it sends a Credit-Control-Request-Initial (CCR-I) message to the Policy and charging rule function (PCRF) server, which is the DIAMETER server. In response to this, the PCRF server sends the Credit-Control-Answer-Initial (CCA-I) message to the BNG,

along with the policy to be applied for the subscriber. Later, for example, when the user exceeds the usage quota, the PCRF server sends a RAR message whereby the redirect policies are applied dynamically for the subscriber.

## 2. Redirect triggered by GX Credit-Control-Answer Initial (CCA-I) message during the bring-up of the subscriber session

Here, the CCR-I and CCA-I message exchange happens as mentioned in use case 1 above. The redirect service policy for the subscriber which is carried in the CCA-I message is then downloaded by the BNG and applied to the subscriber profile. Whenever the subscriber tries to access a web portal, it is redirected by the BNG to the respective web server as per the redirect URL configured for that subscriber. The communication then happens between the subscriber and the redirect web server.

## 3. Redirect in Access-Accept message scenario

The redirect URL with subscriber information feature is enabled if the Access-Accept message sent from the AAA server to the BNG contains the Cisco AVP **parsed-user-name** as part of the user profile.

## 4. Redirect in authentication failure scenarios

The redirect URL with subscriber information feature is not enabled in access reject scenarios such as:

- A subscriber who is not provisioned in the AAA database
- A DSL subscriber with incorrect DHCP Option 82
- An FTTH subscriber with incorrect DHCP Option 82

The subscriber username, subscriber IP address and BNG source-identifier are not present in these scenarios. The AAA server sends the Access-Reject message without the *parsed-user-name* attribute to the BNG which results in subscriber authentication failure in the above scenarios. A default string with value as `NOTAVAILABLE` is sent in the Access-Reject message in such scenarios. The BNG redirects such subscribers to a portal server using a pre-configured `authentication-failed-redirect` URL. The subscriber accounting can be decided by enabling or disabling **accounting** on the BNG.

# Configure HTTP Redirect URL with Subscriber Information

The configuration steps remain the same for redirect URL with and without subscriber information. For detailed steps, see [HTTP Redirect Using PBR, on page 53](#).

## Running Configuration

```
/* Access List Configuration */
ipv4 access-list httppr-acl-example
  10 permit tcp any any eq www syn
  20 permit tcp any any eq www ack
  30 permit tcp any any eq www
!

/* Class Map Configuration */
class-map type traffic match-any httppr-class-example
  match access-group ipv4 httppr-acl-example
end-class-map
!
policy-map type pbr httppr-policy-example
  class type traffic httppr-class-example
    http-redirect http://example.com/index.php
```

```

!
class type traffic class-default
!
end-policy-map
!

/* Service Policy Configuration */
dynamic-template
  type service httprr-service-example
  service-policy type pbr httprr-policy-example
!
!

```

### Verification

Use this command to verify if the subscriber policy is applied or not:

```

Router# show policy-map type pbr interface Bundle-Ether1.1
Sun Feb 19 22:19:32.289 EDT
Bundle-Ether1.1 input: httprr-policy-example
Policy Name: httprr-policy-example
Class httprr-class-example
  Classification statistics          (packets)
    Matched                        :          26
  Httprr statistics                (packets)
    Requests Received              :          26
    Responses Sent                  :           0
    Redirect drops                  :          26
Class class-default
  Classification statistics          (packets/bytes) (May be 10secs old)
    Matched                        :         10/940

```

### Associated Commands

- class-map
- dynamic-template
- http-redirect
- policy-map
- show policy-map

## HTTP-Redirect Support for Static Sessions

From Cisco IOS XR Software Release 6.5.1 onwards, BNG extends the HTTP redirect feature support for static sessions.

For a detailed information on HTTP Redirect feature, refer to the section [HTTP Redirect Using PBR, on page 53](#).

### Restrictions for HTTP Redirect for Static Sessions

HTTP redirect for static sessions in BNG is subjected to the below restrictions:

- The maximum size of the redirect URL cannot be greater than 256 bytes (or characters). The redirect URL includes both the original information, such as the portal webserver or the IP address information, as well as the extension information which is packed in a defined format.

## Configure HTTP Redirect for Static Sessions

### Configuration Steps

The below section shows the steps to configure a redirect policy in which an authentication failure results in the subscriber being redirected to a portal server.

For instructions on creating access lists that define the redirected and open-garden permissions. See, [Identifying HTTP Destinations for Redirection, on page 54](#).

For instructions on Creating the class-maps that uses the access list to classify the traffic as redirected, or permitted to access open-garden. See, [Configuring Class Maps for HTTP Redirection, on page 58](#).

```
Router# config terminal
Router(config)# ipv4 access-list httppr-acl-cfg
Router(config-ipv4-acl)# 10 permit tcp any any eq www syn
Router(config-ipv4-acl)# 20 permit tcp any any eq www ack
Router(config-ipv4-acl)# 30 permit tcp any any eq www
Router(config-ipv4-acl)# exit
Router(config)# class-map type traffic match-any httppr-class-cfg
Router(config-cmap)# match access-group ipv4 httppr-acl-cfg
Router(config-cmap)# end-class-map
Router(config)# policy-map type pbr httppr-policy-cfg
Router(config-pmap)# class type traffic httppr-class-cfg
Router(config-pmap-c)# http-redirect http://203.0.113.103/index.php
Router(config-pmap-c)# exit
Router(config-pmap)# class type traffic class-default
Router(config-pmap-c)# drop
Router(config-pmap-c)# exit
Router(config-pmap)# end-policy-map
Router(config)# dynamic-template
Router(config-dynamic-template)# type ipsubscriber httppr-service-cfg
Router(config-dynamic-template-type)# service-policy type pbr httppr-policy-cfg
Router(config-dynamic-template-type)# exit
Router(config-dynamic-template)# exit
Router(config)# policy-map type control subscriber POLICY1
Router(config-pmap)# service-policy type pbr httppr-policy-cfg
Router(config-pmap-e)# event authentication-failure match-first
Router(config-pmap-e)# class type control subscriber CL1 do-until-failure
Router(config-pmap-c)# 2 activate dynamic-template httppr-service-cfg
Router(config-pmap-c)# exit
Router(config-pmap-e)# exit
Router(config-pmap)# end-policy-map
Router(config)# interface gigabitEthernet 0/0/0/0
Router(config-if)# bundle id 1 mode on
Router(config-if)# exit
Router(config)# interface bundle-ether 1
Router(config-if)# mac-address a1.b1.c1
Router(config-if)# exit
Router(config)# interface bundle-ether 1.100
Router(config-subif)# ipv4 address 192.0.2.10 255.255.255.0
Router(config-subif)# ipv6 address 2001:DB8::10/32
Router(config-subif)# ipv6 nd dad attempts 0
Router(config-subif)# encapsulation dot1q 100
Router(config-subif)# service-policy type control subscriber POLICY1
```

```
Router(config-subif)# ipsubscriber interface
Router(config-subif)# commit
```

## Running Configuration

The below example shows the running configuration for a redirect policy in which an authentication failure results in the subscriber being redirected to a portal server.

```
ipv4 access-list http-acl-cfg
 10 permit tcp any any eq www syn
 20 permit tcp any any eq www ack
 30 permit tcp any any eq www
!
class-map type traffic match-any http-class-cfg
 match access-group ipv4 http-acl-cfg
end-class-map
!
policy-map type pbr http-policy-cfg
 class type traffic http-class-cfg
   http-redirect http://203.0.113.103/index.php
 !
 class type traffic class-default
   drop
 !
end-policy-map
!
dynamic-template
 type ipsubscriber http-service-cfg
 service-policy type pbr http-policy-cfg
 !
!
policy-map type control subscriber POLICY1
 event authentication-failure match-first
 class type control subscriber CL1 do-until-failure
 2 activate dynamic-template http-service-cfg
end-policy-map
!
interface GigabitEthernet0/0/0/0
 bundle id 1 mode on
!
interface Bundle-Ether 1
 mac-address a1.b1.c1
!
interface Bundle-Ether 1.100
 ipv4 address 192.0.2.10 255.255.255.0
 ipv6 address 2001:DB8::10/32
 ipv6 nd dad attempts 0
 encapsulation dot1q 100
 service-policy type control subscriber POLICY1
 ipsubscriber interface
```



# HTTP Header Enrichment for BNG Subscribers

Table 4: Feature History Table

| Feature Name                               | Release Information | Feature Description  |
|--|---------------------|--|
| HTTP Header Enrichment for BNG Subscribers | Release 7.3.1       | The feature redirectes HTTP GET request packets sent by a broadband subscriber back to the original destination server with enriched header parameters. From this release onwards, a place-holder value is retained instead of the actual enriched parameters, thereby preventing any accidental sharing of BNG subscriber information with the subscribers. |

This feature enables you to intercept the HTTP GET request packet sent by a broadband subscriber, add custom HTTP headers to it and then forward the enriched HTTP GET request to the original destination server. This provides the capability to add information within the HTTP header, such as subscriber and BNG information, which the server can decode in order to decide whether to allow or deny the request.

From Cisco IOS XR Software Release 6.6.3 onwards, the HTTP header enrichment feature on BNG is enhanced to support pseudowire headend (PWHE) subscriber sessions as well. This enhancement is available along with subscriber redundancy group (SRG) support, thereby providing geographical redundancy for such sessions.

Figure 3: Example of an enriched HTTP header

```

Hypertext Transfer Protocol
GET /index.html HTTP/1.1\r\n
Host: [2001:DB8:1::1] \r\n
Connection: Keep-Alive\r\n
x-mac: 1222.c0a8.0001\r\n
x-ip4: 203.0.113.1
x-ip6: 2001:DB8:ABCD::1
x-bng: IPOE\r\n
x-bngip4: 209.165.201.1
x-bngip6: 2001:DB8:100::1
\r\n
[Full request URI: http:// [2001:DB8:1::1]/index.html]
[HTTP request 1/1]
[Response in frame: 12]

```

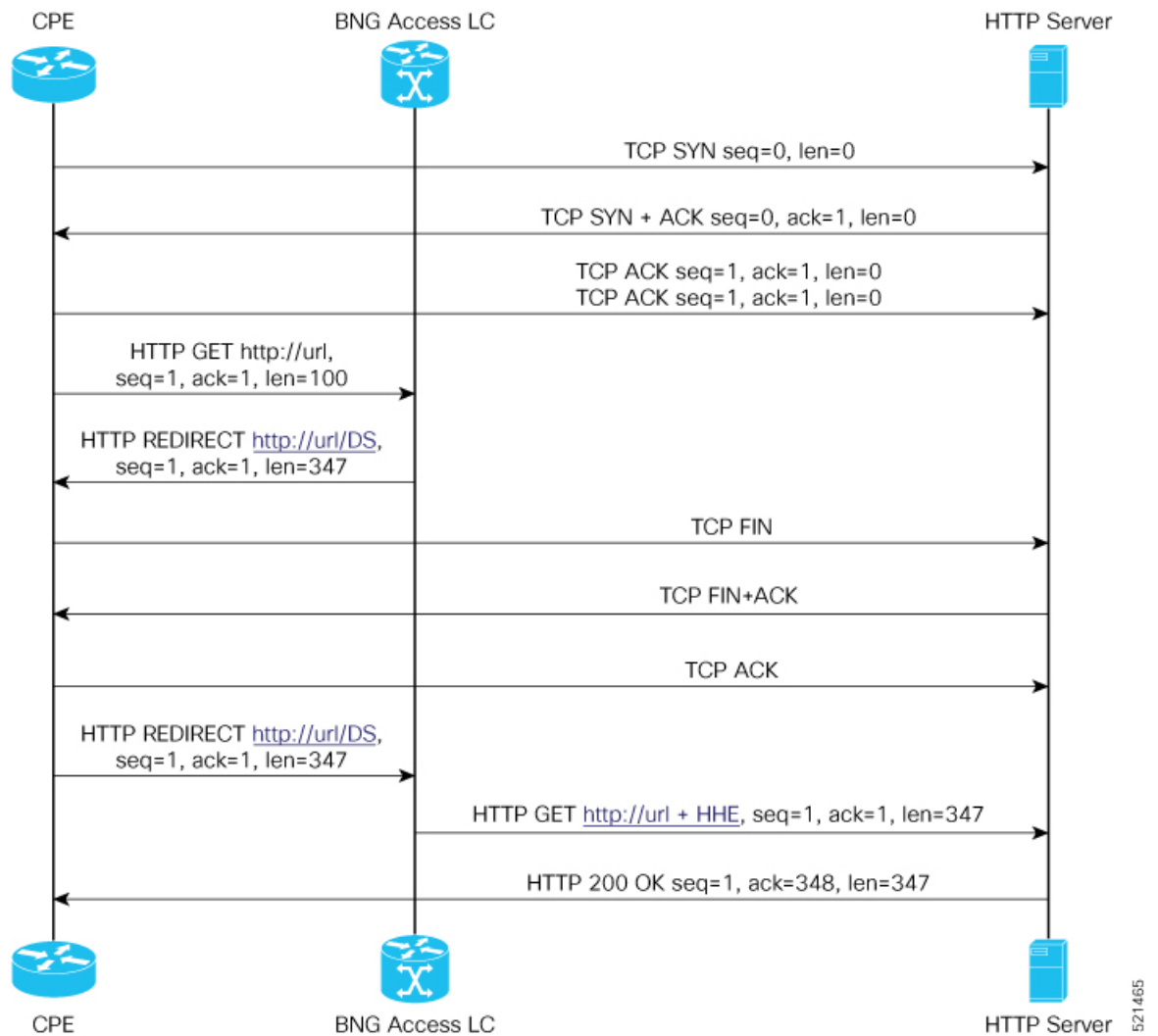
367582

Starting with Cisco IOS XR Software Release 7.3.1, an intercepted HTTP GET packet is redirected back to HTTP client with enriched header field, but instead of actual value of the enriched parameters, only place-holder value is retained. This method prevents leakage of BNG subscriber information back to the subscriber. Once the new HTTP GET packet is re-intercepted, the actual value is filled instead of place-holder value and then

forwarded to HTTP server. Furthermore, sequence number synchronization issue is also avoided between client and server because the HTTP client and server are in sync with actual HTTP packet length. The following events take place:

1. CPE sends HTTP get request to BNG.
2. BNG redirects it to CPE with a dummy signature.
3. CPE resends HTTP get with dummy signature.
4. BNG intercepts the HTTP GET request packet, adds additional parameters to it and then forwards the enriched HTTP GET request to the original destination server.

**Figure 4: Sequence of events for HTTP Header Enrichment**



**Note** The number of supported BNG subscribers per Line Card has been increased to 128K from 64K, beginning with Cisco IOS XR Software Release 7.3.1.

### Restrictions for HTTP Header Enrichment

HTTP header enrichment in BNG is subjected to the below restrictions:

- An HTTP request or response of length greater than 2000 bytes cannot be processed.
- This feature is not supported in cases where the HTTP request or response is fragmented.
- Only the first HTTP request packet from the client is enriched. After a SUCCESS response is obtained, no further HTTP packets will be received from subscriber for the entire duration of the timeout period, which is around 8 hours.
- The state of the BNG identifier interface will not be considered. In other words, even if the BNG identifier interface is shutdown the configured IP address will be used for enrichment.
- There can be additional spaces in encoded x-headers.
- IP options are not supported with HTTP header enrichment.
- HTTPS enrichment is not supported.
- The HTTP server or proxy need to be using TCP connection.
- In the case of high availability scenarios, the in-progress HTTP transactions will be dropped and the client will have to retry.
- HTTP header enrichment based on destination URL is not supported.
- This feature is supported only for IPoE and PWHE sessions.
- In the scenario where the hostname of the BNG is changed, the new hostname is used for both the new and existing subscribers. However, randomly changing the hostname of the router when there are existing subscribers present, is not recommended.
- This feature does not support random changes in the subscriber attributes such as IP address and MAC address.
- If the BNG interface is changed, the HTTP header enrichment feature uses the IP address of the new BNG interface for existing and new subscribers. However, randomly changing the BNG interface when existing subscribers are present on the router, is not recommended.
- In the scenario where the BNG interface is not configured, the HTTP header enrichment features uses 0.0.0.0 as the IPv4 address and 0::0 as the IPv6 address. This is a misconfiguration and is not recommended.
- It is not recommended to configure extra parameters in the **http-enrichment parameter-list** that is not mentioned in **subscriber http-enrichment parameter-list**. This is a misconfiguration and results in incorrect encoding.

## Configure HTTP Header Enrichment for BNG Subscribers

### Configuration Steps

The below section shows how to configure a PBR based policy-map with http-enrichment enabled on one of the classes:

```

Router# config terminal
Router(config)# policy-map type pbr http-enrichment-policy
Router(config-pmap)# class type traffic open-garden-class
Router(config-pmap-c)# transmit
Router(config-pmap-c)# exit
Router(config-pmap)# class type traffic http-enrich-class1
Router(config-pmap-c)# http-enrichment parameter-list subscriber-mac hostname bng-interface
Router(config-pmap-c)# exit
Router(config-pmap)# class class-default
Router(config-pmap-c)# drop
Router(config-pmap-c)# commit

```

The configuration steps for configuring a primary-list of http-enrichment parameters that are used in http-enrichment actions configured across all class-maps is shown below:

```

Router(config)# subscriber
Router(config-subscriber)# http-enrichment parameter-list subscriber-mac hostname
bng-interface
Router(config-subscriber)# commit

```

The configuration steps to set the bng identifier interface is shown below:

```

Router(config)# subscriber
Router(config-subscriber)# bng-interface Loopback8
Router(config-subscriber)# commit

```

## Running Configuration

An example of the running configuration for the policy-map with HTTP enrichment action is shown below:

```

policy-map type pbr http-enrichment-policy
  class type traffic open-garden-class
    transmit
  !
  class type traffic http-enrich-class1
    http-enrichment parameter-list subscriber-mac hostname bng-interface
  !

  class class-default
    drop
  !
!
end-policy-map

```

The running configuration for the subscriber enrichment parameter list is shown below:

```

subscriber
  http enrichment parameter-list subscriber-mac subscriber-ip hostname bng-interface
!

```

The running configuration for the subscriber BNG identifier interface is shown below:

```

subscriber
  bng-interface Loopback8
!

```

## Verification

The HTTP header enrichment statistics can be obtained using the commands **show policy-map type pbr interface all** and **show pbr internal statistics** .

```

Router# show policy-map type pbr interface all
node0_3_CPU0: (null): Service Policy not installed
node0_2_CPU0: (null): Service Policy not installed
node0_1_CPU0: (null): Service Policy not installed
node0_0_CPU0: (null): Service Policy not installed
node0_RSP0_CPU0:
Bundle-Ether20.1.ip296 input: http-policy-pldt
Policy Name: http-policy-pldt

Class http-class-pldt
  Classification statistics (packets)
    Matched : 13
  Http enrichment statistics (packets)
    HTTP Responses Sent : 13
    HTTP Request Sent : 6
    TCP packets Sent : 7
    Enrichment drops : 0
Class class-default
  Classification statistics (packets/bytes) (May be 10secs old)
    Matched : 308/31094

Router# show pbr internal statistics location 0/1/cp00
PBR EA Internal Statistics:
  RSI Replay End Pending: 0
  Database:
    IFH Add: 1
    IFH Delete: 1
    IFH Total: 0
    Mutex Block: 0
  IM:
    Caps Add: 1
    Caps Add Error: 0
    Caps Remove: 1
    Caps Remove Error: 0
    DPC: 4
    DPC Error: 0
    Init Data Update: 0
    Init Data Update Error: 0
  Switching:
    Rx HTTPR TCP SYN: 0
    Rx HTTPR TCP ACK: 0
    Rx HTTPR TCP FIN: 0
    Rx HTTPR HTTP GET: 0
    Rx HTTPR HTTP HEAD: 0
    Rx HTTPR HTTP POST: 0
    Tx HTTPR TCP SYN ACK: 0
    Tx HTTPR TCP FIN ACK: 0
    Tx HTTPR HTTP Redirect: 0
    Tx HTTP Enrichment TCP ACK: 8
    Tx HTTP Enrichment TCP FIN: 0
    Tx HTTP Enrichment TCP SYN: 2
    Tx HTTP Enrichment TCP RST: 3
    Tx HTTP Enrichment TCP SYN ACK: 0
    Tx HTTP Enrichment TCP FIN ACK: 0
    Tx HTTP Enrichment TCP RST ACK: 1
    Tx HTTP Enrichment Response: 0
    Tx HTTP Enrichment Request: 10
    DROP IFH Class ID Inval: 0
    DROP API Error: 0
    DROP No Connection: 0
    DROP HTTPR Fragment: 0
    DROP HTTPR IP Options: 0
    DROP HTTPR TCP ACK: 0
    DROP HTTPR TCP Parse: 0

```

```

DROPPED HTTPR HTTP Parse: 0
DROPPED HTTP Enrichment Fragment: 0
DROPPED HTTP Enrichment IP Option: 0
DROPPED HTTP Enrichment TCP ACK: 14
DROPPED HTTP Enrichment TCP Parse: 0
DROPPED HTTP Enrichment HTTP Parse: 0

```

## Idle Timeout for IPoE and PPPoE Sessions

The Idle Timeout feature for IPoE and PPPoE sessions allows users to configure a maximum period of time that the subscriber sessions may remain idle. The subscriber sessions are terminated when this timeout period expires. The BNG monitors both the ingress and egress traffic for the determination of the idle time for the subscriber sessions. Control packets are not considered while determining session inactivity.

You can configure a threshold rate, and if packets sent or received by BNG in that interval is less than this threshold rate, then that particular session is considered idle. The threshold option allows you to consider low traffic rates as being idle and to exclude DHCP lease renewal packets from the statistics used for idle time determination. For instance, if you want to discount the DHCP short lease of 5 minutes, then you must configure the threshold as 5 packets per minute.

The dynamic template configuration of idle timeout is extended to also support **type ppp** templates. If idle timeout is enabled and if **monitor** action is not specified under the idle timeout event for a subscriber policy, then, by default, the sessions are disconnected. You can prevent the sessions from getting disconnected, by setting, for that particular subscriber policy, the policy action under the idle timeout event as **monitor**.

These Cisco VSAs are used to configure or update the idle timeout threshold and traffic direction from the RADIUS server:

```

idlethreshold = <mins/pkt>
idle-timeout-direction = <inbound | outbound | both>

```

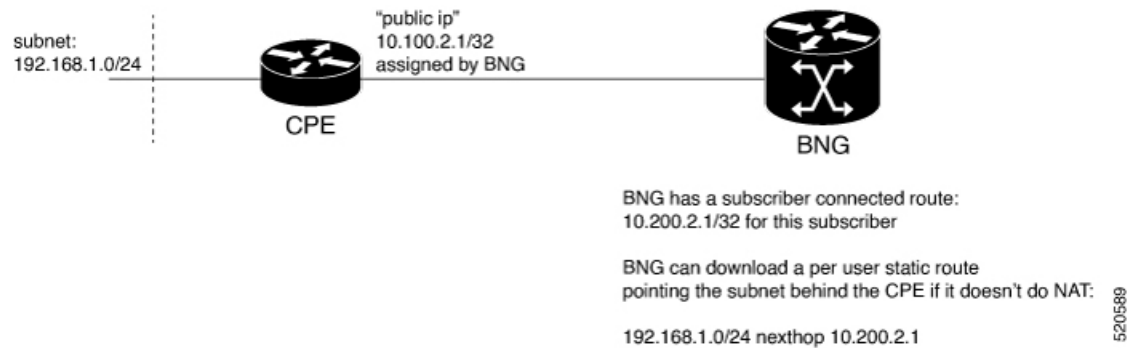
For details on configuring idle timeout, see [Creating Dynamic Template for IPv4 or IPv6 Subscriber Session](#).

For details on configuring a policy-map with the idle-timeout event, see [Configuring a Policy-Map](#).

## Routing Support on Subscriber Sessions

Routing support on subscriber sessions allows dynamic routes to be added on an individual subscriber basis for IPoE and PPPoE sessions. This allows forwarding traffic to a subscriber subnet that resides behind the customer premise equipment (CPE).

Here is a typical scenario:



Typically, a CPE provides NAT support and uses the public IP address provided during the session establishment through DHCP or PPPoE. This process doesn't require for the BNG to understand or know what subnet is behind the CPE.

In some cases, the CPE doesn't perform NAT. In such cases, an operator is required to provision a route on the BNG to point to the subnet behind the CPE using a next hop of the CPE.

To achieve this, you can do one of the following. But, neither of them are easy to manage.

- Use static route on the BNG router static configuration.
- Use a dynamic routing protocol to advertise and learn networks between CPE and BNG.

With RADIUS attribute value pairs, you can easily provide the subnet routing for such cases. The routes are dynamically downloaded from RADIUS and are added for each subscriber and the routes are configured as part of the RADIUS profile of the subscriber. The subscriber sessions are not disconnected even if the dynamic route insertion fails.

You can use the IETF defined (per user static routes) through the following attributes that exist in `Cisco:Avpair` format as well.

- Framed-Route for IPv4
- Framed-IPv6-Route for IPv6

The format of the `Cisco:Avpair` used for configuring the dynamic routes is:

For IPv4,

```
Cisco:Avpair = "ipv4:ipv4-route = {<prefix> } {<mask> } {<next_hop_ip_address> } [<metric> ]
[tag <tag_value> ]"
```

For example :

```
Cisco:Avpair = "ipv4:ipv4-route = 10.121.3.0 255.255.255.0 10.212.1.254 30 tag 12"
```

In this example, the route for 10.121.3.0 255.255.255.0 is added to the subscriber vrf with a next hop of 10.212.1.254. The route has a metric of 30 and a route tag value of 12.

For IPv6,

```
Framed-IPv6-Route + = "ipv6:ipv6-route = {<prefix> } {<mask> } {<next_hop_ip_address> }
[<metric> ] [tag <tag_value> ]"
```

For example,

```
Framed-IPv6-Route + = "ipv6:ipv6-route = 2000:18c8:1111::1111/128 :: 4 tag 1000"
```

In this example, the next hop is the subscriber interface and the route is installed with a metric of 4 and tag 1000.

Where,

- `prefix mask`: Specifies the IP route prefix and prefix mask for the destination.
- `next_hop_ip_address`: Specifies the next hop IP address.
- `metric`: Specifies the route metric. Range is 1 to 254. Default value is 2.
- `tag tag_value`: Specifies a tag value that can be used as a match for controlling redistribution using route policies. Range is 1 to 4294967295.

### Restrictions

- For IPv6 when a next hop and tag values are defined, you need to configure the metric value for the subscriber to be connected. If not defined, the subscriber fails to connect.
- For IPv6 when only the tag value is set and no metric is configured, the value is interpreted as a metric. The route fails to install if the tag is greater than 254, but the subscriber will be able to connect.

### Benefits of Routing Support on Subscriber Sessions

These are some of the benefits of routing support on subscriber sessions:

- Multiple dynamic routes for each subscriber are supported.
- The user can specify the next hop and metric for each route to be added. If the destination VRF isn't specified, the VRF of the subscriber is taken as the default. If the next hop VRF isn't specified, the same VRF as that of the destination prefix is taken as the default.
- Dynamic routes are the CoA attribute and therefore, they can be changed while the subscriber is connected to the BNG router.

## Traffic Mirroring on Subscriber Session

BNG supports the Traffic Mirroring feature on subscriber session. Traffic mirroring, also known as Switched Port Analyzer (SPAN), enables a user to monitor Layer 2 network traffic passing in or out of a set of Ethernet interfaces. This allows the mirroring of packets that pass through a source interface to a specified destination interface. The destination interface may then be attached to a network analyzer for debugging.

Traffic Mirroring or Switched Port Analyzer (SPAN) has these two distinct sets of configurations:

- Global configuration to create monitor sessions - A session is configured by specifying a session type and a destination that can be a local interface or a pseudo-wire interface.
- Source interface attachment configuration - This specifies how an interface should be attached to a monitor session.

For BNG, the source interface attachment configuration to a monitor session is through the use of dynamic templates. The subscriber is attached to the monitor session only when the template is applied to the subscriber. The template is applied or removed using the **activate-service** or **deactivate-service** CoA command sent from the RADIUS server or using the **test radius coa [activate | deactivate]** command.



For more information on Traffic Mirroring feature, see *Configuring Traffic Mirroring on the Cisco ASR 9000 Series Router* chapter in the *Interface and Hardware Component Configuration Guide for Cisco ASR 9000 Series Routers*. For complete command reference of the SPAN commands, see the *Traffic Mirroring Commands on the Cisco ASR 9000 Series Router* chapter in the *Interface and Hardware Component Command Reference for Cisco ASR 9000 Series Routers*.

For configuring traffic mirroring on BNG subscriber session, see [Enabling Traffic Mirroring on Subscriber Session, on page 81](#).


**Note**

- It is recommended that a dynamic template is dedicated to SPAN configuration, so that SPAN can be enabled or disabled on a subscriber without any adverse impact.
- Modifications to SPAN configuration under a dynamic template, including the removal of configuration, have an immediate effect on all the subscribers to which that template is currently applied.

## Enabling Traffic Mirroring on Subscriber Session

Perform this task to enable traffic mirroring on BNG subscriber session. These steps describe how to configure a dynamic template that references the monitor session and to associate or dis-associate it with a specific subscriber to enable or disable SPAN.

**Before you begin**

Create monitor sessions in global configuration mode using **monitor-session** command. Refer, [Traffic Mirroring on Subscriber Session, on page 80](#)

**SUMMARY STEPS**

1. **configure**
2. **dynamic-template type** {ipsubscriber | ppp | service} *dynamic-template-name*
3. Configure **monitor-session**, with optional **direction**, **acl** and **mirror first** options
4. Use the **commit** or **end** command.
5. **test radius coa** {activate | deactivate} **service name** **acct-ses-id** *name*

**DETAILED STEPS**
**Procedure**

|        | Command or Action  | Purpose   |
|--------|--|---|
| Step 1 | <b>configure</b><br><br><b>Example:</b><br><br>RP/0/RSP0/CPU0:router# configure          | Enters global configuration mode.               |
| Step 2 | <b>dynamic-template type</b> {ipsubscriber   ppp   service} <i>dynamic-template-name</i> | Creates a dynamic-template of type <b>ppp</b> . |

|               | Command or Action   | Purpose  |
|---------------|---|--|
|               | <b>Example:</b><br><br>RP/0/RSP0/CPU0:router(config)# dynamic-template<br>type ppp ppp_template   |  |
| <b>Step 3</b> | Configure <b>monitor-session</b> , with optional <b>direction</b> , <b>acl</b> and <b>mirror first</b> options<br><br><b>Example:</b><br><br>RP/0/RSP0/CPU0:router(config-dynamic-template-type)# monitor-session<br>mon1 direction rx-only<br>RP/0/RSP0/CPU0:router(config-dynamic-template-type)# acl<br>RP/0/RSP0/CPU0:router(config-dynamic-template-type)# mirror<br>first 100 | Configures a dynamic template that references the monitor session.<br><br><b>Note</b><br>This syntax of monitor-session command for dynamic templates is same as the syntax for regular interfaces.  |
| <b>Step 4</b> | Use the <b>commit</b> or <b>end</b> command.  | <b>commit</b> —Saves the configuration changes and remains within the configuration session.<br><br><b>end</b> —Prompts user to take one of these actions: <ul style="list-style-type: none"> <li>• <b>Yes</b> — Saves configuration changes and exits the configuration session.</li> <li>• <b>No</b> —Exits the configuration session without committing the configuration changes.</li> <li>• <b>Cancel</b> —Remains in the configuration session, without committing the configuration changes.</li> </ul> |
| <b>Step 5</b> | <b>test radius coa {activate   deactivate} service name acct-ses-id name</b><br><br><b>Example:</b><br><br>RP/0/RSP0/CPU0:router# test radius coa activate<br>acct-ses-id 0x00000001 service service1   | If <b>activate</b> keyword is used, this command enables SPAN by associating a dynamic template with a specific subscriber.<br><br>If <b>deactivate</b> keyword is used, this command disables SPAN by dis-associating a dynamic template with a specific subscriber.  |

### Enabling Traffic Mirroring on Subscriber Session: An example

```
//Global configuration to create monitor sessions
configure
monitor-session mon1
destination interface gigabitethernet0/0/0/1
ethernet-services access-list tm_filter
10 deny 0000.1234.5678 0000.abcd.abcd any capture
!
!

//Configuring a dynamic template that references the monitor session
configure
dynamic-template type ppp ppp_template
monitor-session mon1 direction rx-only
acl
mirror first 100
```

```

!
!

//Associating a dynamic-template with a specific subscriber to enable SPAN
test radius coa activate acct-ses-id 0x00000001 service service1

```

## Randomization of Interim Timeout of Sessions or Services

The randomization feature distributes the interim timeouts in a relatively uniform manner and prevents accumulation of timeouts for interim accounts of sessions or services. This prevents a cycle where all messages are sent at once (this occurs if a primary link was recently restored and many dial-up users were directed to the same BNG at once). This is useful in scenarios such as churn scenarios of session bring up (that is, a small spurt with very high session bring up rate), subscriber redundancy group (SRG) subordinate to primary switchover in BNG geo redundancy and so on.

For example, if a session is brought up at time 0, and it has an interim interval of 10 minutes (600 seconds), the first interim message is sent at time  $t_1 = 600$  seconds (this is without randomization enabled). With randomization enabled, a random number  $x$  which is less than 600 is selected and the first interim message is sent at that time,  $x$ . Use this command to specify the maximum variance allowed:

### accounting interim variation

Sample configuration:

```

subscriber
manager
    accounting interim variation 10

```

## Controlling Subscriber Plans Using Protocol Options

The BNG router supports identity change for DHCP Remote-Id parameter, thereby allowing modification of the subscriber service. This functionality of controlling subscriber plans using protocol options helps to deactivate an old service and activate a new service for the subscriber, based on the new service name received in Remote-Id parameter.

BNG does this by extracting the username and the service name from Remote-Id parameter. The DHCP server compares the Remote-Id received in the packet against the Remote-Id that was stored earlier. If there is a data mismatch, DHCP triggers an identity change event. DHCP adds the new Remote-Id in identity parameters to be added and places the old Remote-Id in identity parameters to be removed. On successful execution of the event, the new service gets activated.

## How to Control Subscriber Plans Using Protocol Options

To enable identity change handling across BNG router, use **subscriber feature identity-change** command in the global configuration mode. A new event, **session-identity-change**, is introduced to specify an identity change event. In order to decode the service encoded in the DHCP Remote-Id parameter, as per the defined AAA attribute format, use **decode** command in the policy-map event class configuration mode. The **activate** command in the class-map sub-configuration mode is also enhanced to include an option **service-from-line** to activate the service encoded in the DHCP Remote-Id parameter.

Consider an example where the Remote-Id parameter received by BNG is in the format '*Username|Service-Name*', say, *bng\_user/service1*. At session start stage, DHCP passes this Remote-Id in the 'parameters-to-add' list. The 'parameters-to-remove' list is empty at that point of time. The decode instruction decodes the Remote-Id based on the defined AAA attribute format (my-format in this example), extracts Username (*bng\_user*) and Service-Name (*service1*) from it, and adds these parameters to the system. The **service-from-line** parameter refers to this particular Service-Name. The extracted Service-Name is added to AAA\_AT\_SUBSCRIBER\_ACTIVATE\_SERVICE attribute in the transaction context and it gets activated.

FSOL clients trigger an event when they want to change an identity parameter. DHCP triggers this event only if identity-change feature is enabled. In this event, DHCP passes the new Remote-Id (say, *bng\_user/service2*) in parameters-to-add list and passes the old Remote-Id as part of parameters-to-remove list. The new Service-Name to be activated (*service2*) and the old Service-Name (*service1*) to be deactivated are decoded, extracted and added to AAA\_AT\_SUBSCRIBER\_ACTIVATE\_SERVICE and AAA\_AT\_SUBSCRIBER\_DEACTIVATE\_SERVICE attributes respectively, in the transaction context. The old Service-Name gets deactivated and the new Service-Name gets activated.

### Running Configuration

```
configure

/* This configuration defines the format of Remote-Id from which BNG can derive the Username
and Service-Name */
aaa attribute format my-format format-string length 253 "%[^\]|%[^\]|" username service-name

!

/* Enable identity change feature */
subscriber
  feature identity-change
!

policy-map type control subscriber pm-dtmpl-1
  event session-start match-first
  class type control subscriber CL1 do-until-failure
    1 decode remote-id format my-format
    2 activate dynamic-template service-from-line
    3 authorize aaa list default identifier remote-id password blank

event session-identity-change match-first
  class type control subscriber CL1 do-until-failure
    1 decode remote-id format my-format
    2 deactivate dynamic-template service-from-line
    3 activate dynamic-template service-from-line
    4 authorize aaa list default identifier remote-id password blank
```

Whenever the **deactivate dynamic-template service-from-line** is used after the **decode** instruction, it has to be placed before **activate** or **authorize** commands.

### Verification

Use these commands to verify the activation and deactivation of old and new services for the subscriber:

- **show subscriber session all detail**
- **show dhcp ipv6 server binding detail**
- **show policy-map applied interface bundle-ether *interface-name***

# Additional References

These sections provide references related to implementing BNG subscriber features.

## MIBs

| MIB | MIBs Link   |
|-----|---|
|     | <p>To locate and download MIBs for selected platforms, Cisco IOS releases, and feature sets, use Cisco MIB Locator found at the following URL:</p> <p><a href="http://www.cisco.com/go/mibs">http://www.cisco.com/go/mibs</a></p> |

## Technical Assistance

| Description   | Link   |
|---|--|
| <p>The Cisco Support website provides extensive online resources, including documentation and tools for troubleshooting and resolving technical issues with Cisco products and technologies.</p> <p>To receive security and technical information about your products, you can subscribe to various services, such as the Product Alert Tool (accessed from Field Notices), the Cisco Technical Services Newsletter, and Really Simple Syndication (RSS) Feeds.</p> <p>Access to most tools on the Cisco Support website requires a Cisco.com user ID and password.</p> | <p><a href="http://www.cisco.com/cisco/web/support/index.html">http://www.cisco.com/cisco/web/support/index.html</a></p> |

