



Designing Networks with MetroPlanner

Cisco MetroPlanner provides you numerous tools for customizing the software, creating and analyzing networks, and creating a bill of materials. You can use to MetroPlanner perform the following tasks:

- [2.1 Launching MetroPlanner and Updating the Pricing File, page 2-1](#)
- [2.2 Setting MetroPlanner Options, page 2-4](#)
- [2.3 Creating Networks, page 2-13](#)
- [2.4 Analyzing the Network, page 2-31](#)
- [2.5 Editing and Viewing Network Components, page 2-39](#)
- [2.6 Saving and Loading Network Designs, page 2-58](#)
- [2.7 Completing the Network Design, page 2-58](#)
- [2.8 Ordering the Equipment, page 2-64](#)
- [2.9 Generating a BOM, page 2-65](#)



Note

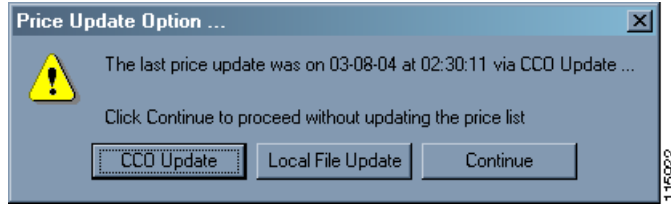
To run MetroPlanner, you must install the Java 2 Platform, Standard Edition (J2SE), v 1.4.2_04 Java Runtime Environment (JRE). You can download it from the following URL:

<http://www.oracle.com/technetwork/java/javase/downloads/index.html>

2.1 Launching MetroPlanner and Updating the Pricing File

When MetroPlanner Release 2.5 is first launched, you will have the option of downloading an updated pricing file from CCO.

- Step 1** Launch MetroPlanner by double-clicking the MetroPlanner R2.5 icon. The Price Update Option window appears ([Figure 2-1](#)).

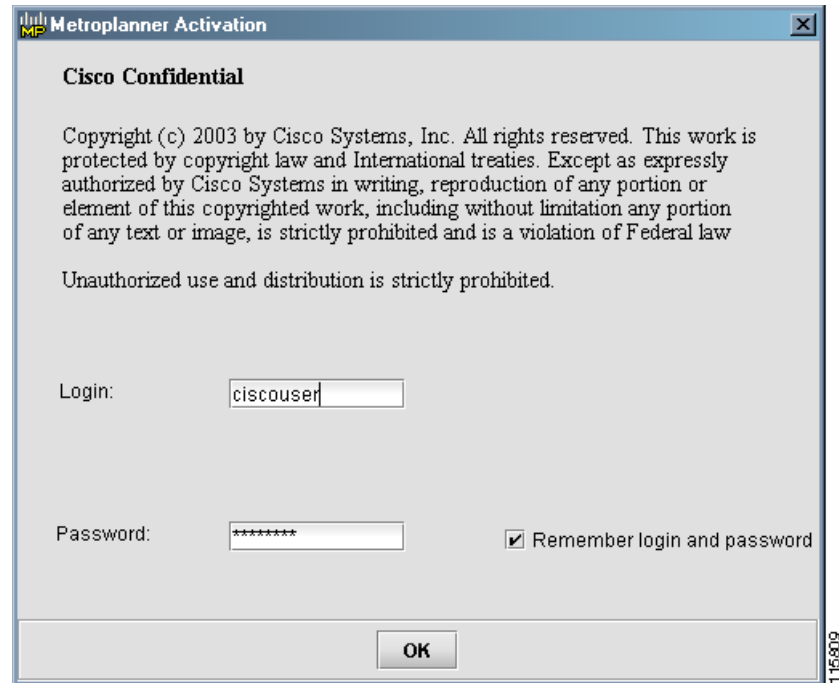
Figure 2-1 Price Update Option

Step 2 To obtain a new price list from CCO, click **CCO Update**. You will be asked for your CCO login and password before the new price list is downloaded.

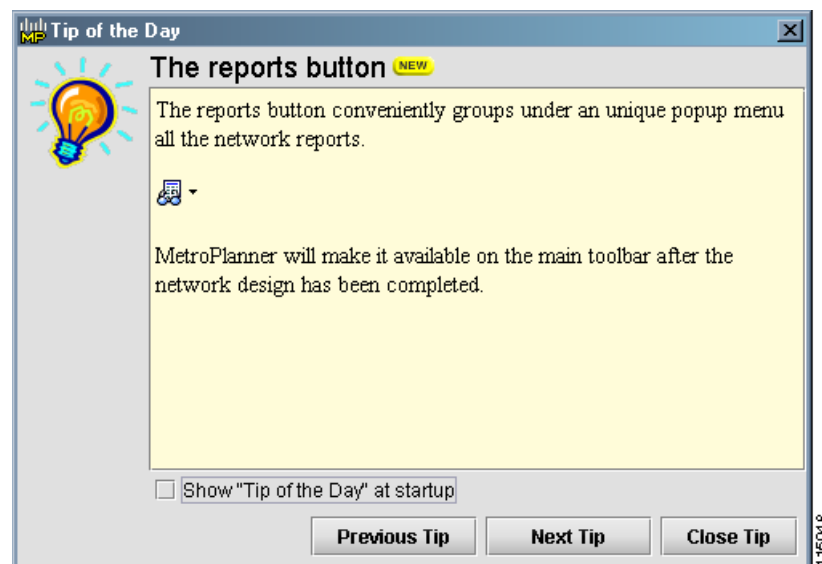
To use a pricing file that is already located on your workstation, click **Local File Update**. You will then be able to browse your workstation for the pricing file. The file format of the pricing file are separated by pipes. Each part has the following fields:

- List ID (Not used by MetroPlanner)
- Product Family or Major Parent
- Minor Parent (Not used by MetroPlanner)
- Product Number or Product ID
- Product Description
- Service Category
- Unit Price (\$USD)
- Major ID (Not used by MetroPlanner)
- Minor ID (Not used by MetroPlanner)

Step 3 To open MetroPlanner without updating, click **Continue**. The MetroPlanner Activation window opens ([Figure 2-2](#)).

Figure 2-2 MetroPlanner Activation Window

- Step 4** Enter your user name in the Login field.
- Step 5** Enter your password in the Password field.
- Step 6** Click Remember login and password if you want MetroPlanner to save your user login name and password.
- Step 7** Click **OK**. The Tip of the Day window opens (Figure 2-3).

Figure 2-3 Tip of the Day Window

The Tip of the Day window displays important tips about MetroPlanner features.

Step 8 Click **Previous Tip** or **Next Tip** to see either the previous or next tip in the tip sequence.

Step 9 Click **Close Tip** to close the window.

Step 10 If you want the Tip of the Day window to display each time you open MetroPlanner, select Show “Tip of the Day” At Startup. Deselecting this option causes the window to remain closed when you open MetroPlanner.

You can open the Tip of the Day window at any time from MetroPlanner by selecting **Help > Tip of the day** in the menu bar.

2.2 Setting MetroPlanner Options

MetroPlanner provides numerous options for customizing the tool and the designs. You can set the options for individual projects, you can create defaults for all projects, and you can set general options for the MetroPlanner tool.

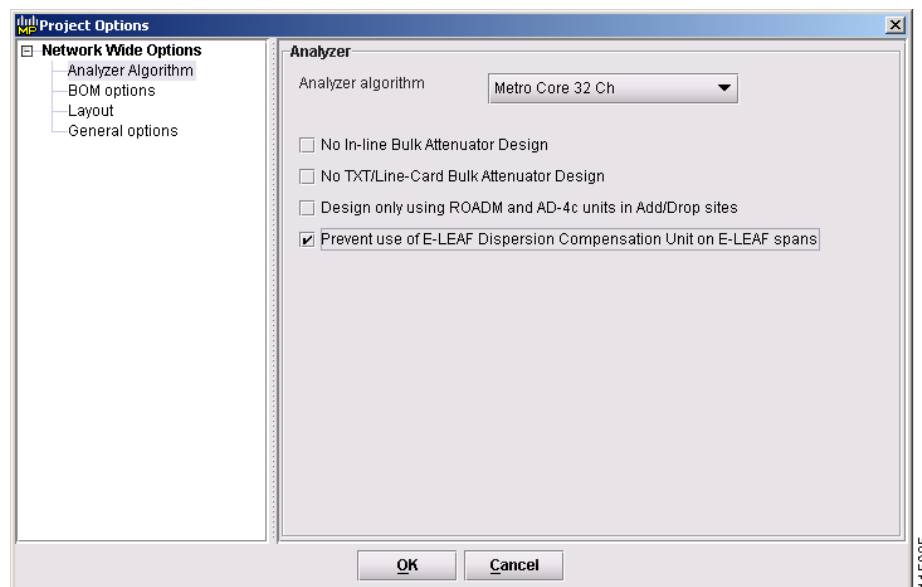
2.2.1 Setting Project Options

Setting the options for individual projects allows you to adjust the layout, BOM options, and other project-related options. You can only set project options when the network is in Design mode.

Step 1 Choose **Options > Project Options**. The Project Options window appears.

Step 2 Click **Analyzer Algorithm**. The Analyzer Algorithm section comes into focus (Figure 2-4).

Figure 2-4 Project Options Window—Analyzer Algorithm



Step 3 Select the analyzer algorithm type.

MetroPlanner distinguishes between two classes of applications: Metro Core, where the channel power is equalized and dispersion compensation is applied; and Metro Access, where the channels are not equalized and dispersion compensation is not applied. MetroPlanner offers 8, 16, and 32 channel Metro Core algorithm types.

**Note**

Placing an upper limit on the maximum number of allowed wavelengths in the design allows MetroPlanner to provide better optical performances.

**Note**

Use Metro Access for small networks. Small networks have a low number of sites (approximately three to five nodes) and short spans.

The Metro Access algorithm applicability is restricted by:

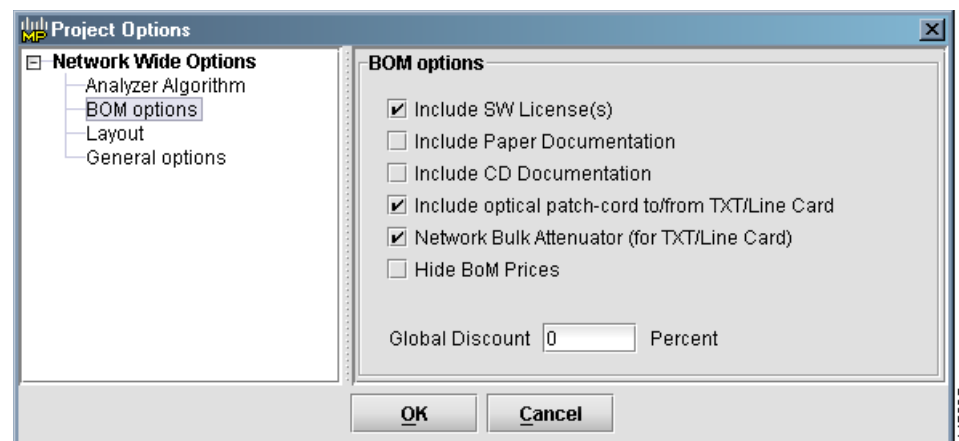
- The maximum number of required amplifiers for each path direction and for each subnetwork (maximum 5)
- Lack of Dispersion Compensation Unit (DCU) compensation requirement
- The overall network circumference (45 km [28.0 miles] if there is at least one 10-Gbps service circuit, and 120 km [74.5 miles] if there are only 2.5-Gbps service circuits)

Step 4 Select No In-line Bulk Attenuator Design to design the network without using any in-line bulk attenuators. If the network cannot be designed without using external in-line attenuators, MetroPlanner displays the following error message: "Unfeasible Network design. Site X should require usage of in-line attenuator".

Step 5 Select No TXT/Line-Card Bulk Attenuator Design to design the network without using any external Rx bulk attenuators on transponder or line cards. If any of the clients require Rx bulk attenuators, the related channel is shown with anomalous working condition (red, orange or yellow), and no Rx bulk attenuators are shown in any of the reports or BOMs.

Step 6 Click **BOM Options**. The BOM Options section comes into focus ([Figure 2-5](#)).

Figure 2-5 Project Options—BOM Options



Step 7 Select the following options, as required:

- Include SW License(s)—BOM includes one software license for each shelf for every site in the network. Only shelves containing cards that are carrying present traffic are included.
- Include Paper Documentation—BOM includes one hardcopy documentation item for each site in the network. Pass-through sites are not included.
- Include CD Documentation—BOM includes one documentation CD item for each site in the network. Pass-through sites are not included.
- Include Optical patch-cord to/from TXT/Line Card—The BOM includes both:

- All patch cords connecting the transponder and the line card with the optical add/drop multiplexing (OADM) and multiplexing/demultiplexing filters
- All patch cords connecting the transponder with the Y-cable flex-layer modules

Only the patch cord connecting the transponder and line card for present traffic are included on the BOM. The patch cord for connecting TXT cards and line card can be of different types and lengths.

- Network Bulk Attenuator (for TXT/Line Card)—The BOM includes all the receive bulk attenuators (based on the results in the Optical Channel Results tab) and the in-line bulk attenuator. Only the receive bulk attenuators that refer to the present traffic are included in BOM.

Bulk attenuators are also used in the following cases:

- In-line attenuation for sites without any added or dropped channels in one side, where attenuation is required to equalize the channels
- Line amplifier sites where both preamplifier and booster cards require 10 dB of attenuation between the preamplifier and the booster amplifier.

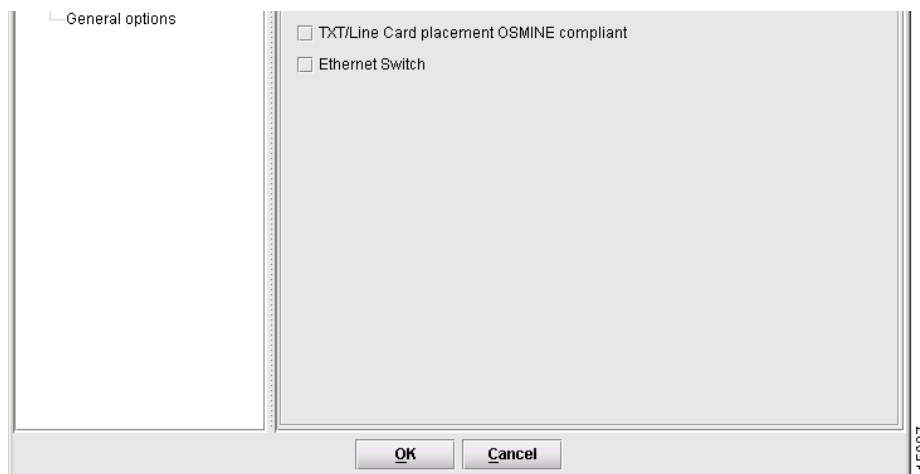
These bulk attenuators are always in the BOM, regardless of the TXT/Line Card Bulk Attenuator selection.

- Hide BoM Prices—Hides the dollar values of the items on the BOM.

Step 8 Enter the global discount percentage in the Global Discount field. MetroPlanner applies this percentage to all networks.

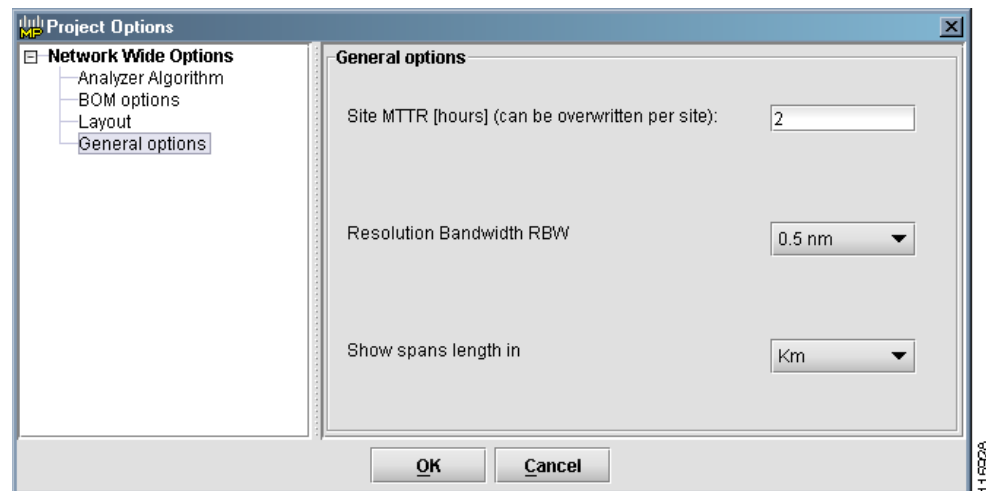
Step 9 Click **Layout**. The Layout section comes into focus ([Figure 2-6](#)).

Figure 2-6 Project Options—Layout



- Step 10** Select either American National Standards Institute (ANSI) or European Telecommunications Standards Institute (ETSI) in the Network Platform Layout drop-down list.
- Step 11** Check **TXT/Line Card placement OSMINE compliant** to place the TXT/line card in the shelf, with the following constraints:
- Each unprotected transponder or line card facing west can only be placed on the left side of the shelf (Slots 1 to 6), and each unprotected transponder or line card facing east can only be placed on the right side of the shelf (Slots 12 to 17).
 - Each pair of transponders or line cards that is involved in a Client 1+1 or Y-cable protection group must be placed in adjacent slots.
 - Each transponder involved in fiber-switched protection can be placed on the left or right side of the shelf in order to fill the empty slots.
- Leave **TXT/Line Card placement OSMINE compliant** unchecked to place the TXT/line card in the shelf with the following constraints:
- The transponder and line card facing west-side traffic must be placed in the left shelf section (Slots 1 to 6), and the transponder and line card facing the east side traffic must be placed in the right shelf section (Slots 12 to 17).
 - If the number of west and east added and dropped channels changes, the remaining client transponder/line cards are placed to fill the remaining available slots.
 - When using Y-cable protection, the two transponders must be placed in the same shelf.
 - When using Client 1+1 protection, MetroPlanner places the two client cards in the same shelf.
- Step 12** Click **General Options**. The General Options section comes into focus (Figure 2-7).

Figure 2-7 Project Options—General Options



- Step 13** In the Site MTTR field, enter the mean time to repair (MTTR) for each site in the network. If you change the MTTR value after creating sites, the new value will only apply to sites you create after the change.
- Step 14** Select whether the OSNR values in the Result tables are reported using 0.1-nm resolution bandwidth (RBW) or 0.5-nm RBW in the Resolution Bandwidth RBW field. The default value is 0.5 nm.
- Step 15** Choose either kilometers (km) or miles as the default span length unit of measure in the Show spans length in field.

Step 16 Click **OK** when finished.

2.2.2 Setting Default Project Options

Setting the default options for all new projects allows you to adjust the layout, BOM settings, and other project-related options. These options will be the default settings for each new project.

- Step 1** Select **Options > Default Project Options**. The Default Project Options window appears. The Default Project Options window is nearly identical to the Project Options window, with the addition of the Span Parameters option in the left panel.
- Step 2** Complete the steps in the [“2.2.1 Setting Project Options”](#) section on page 2-4.
- Step 3** Click **Span Parameters**. The Span Parameters area comes into focus ([Figure 2-8](#)).

Figure 2-8 Default Project Options—Span Parameters

Default Project Options

Span parameters

Span label: <new span>

Span Fibre Type: G652-SMF

Span length: 1.61 Km

Ageing factor: 1.0

Ageing loss [dB]: 0.0

Connector Loss East [dB]: 0.00

Connector Loss West [dB]: 0.00

☒ Length Based Model ☐ Absolute Model

Property	Value
Loss factor [dB / Km]	0.25
Total SOL Loss w/o connectors [dB]	0.40
Total SOL Loss [dB]	0.40
Total EOL Loss [dB]	0.40
Total Chromatic Dispersion [ps / nm]	26.87
Total PMD(DGD) [ps]	0.00

OK Cancel

The Span Parameters area displays the same information as the Fibres Dialog window ([Figure 2-20](#) on page 2-22).

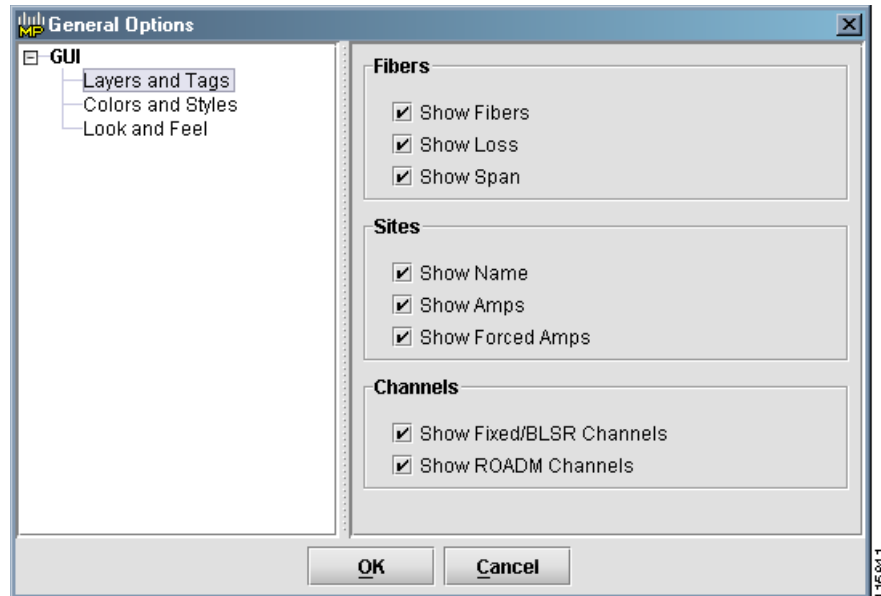
- Step 4** Complete [Step 5](#) through [Step 14](#) in the [“2.3.2.2 Adding Fiber Spans”](#) section on page 2-22.
- Step 5** Click **OK**. These settings are now the default settings for all new projects.

2.2.3 Setting General Options

Setting the general options allows you to change the way MetroPlanner displays information.

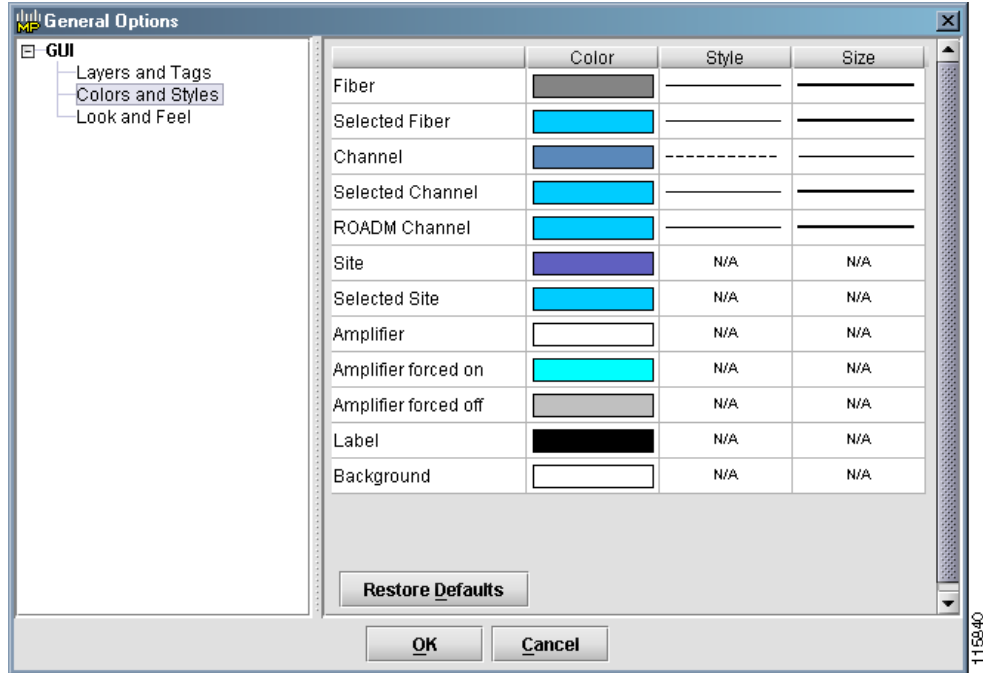
- Step 1** Choose **Options > General Options** from the menu. The General Options window appears.
- Step 2** Select **Layers and Tags**. The Layers and Tags section comes into focus ([Figure 2-9](#)).

Figure 2-9 General Options—Layers and Tags



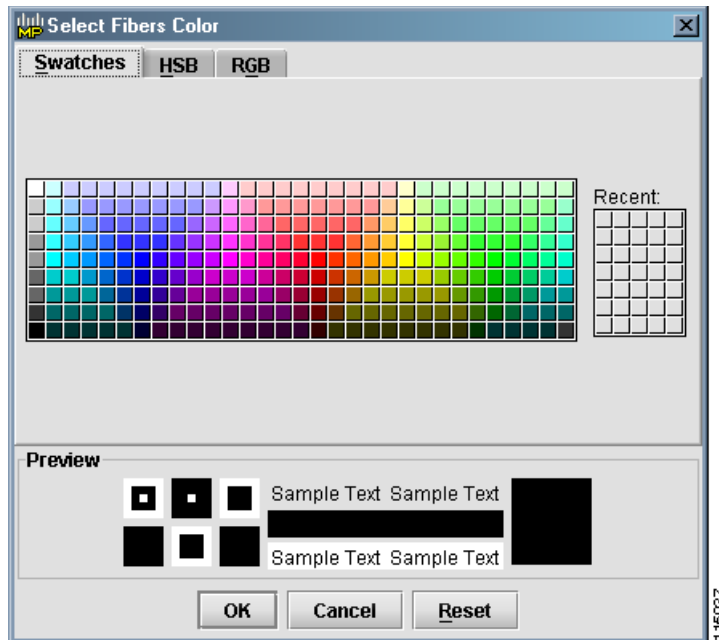
- Step 3** In the Fibers area, select one or more check box depending on whether or not you want MetroPlanner to display the fibers, the span loss, and the span.
- Step 4** In the Sites area, select one or more check box depending on whether or not you want MetroPlanner to display the names, the amplifiers (amps), and the forced amps of the sites in the network design.
- Step 5** In the Channels area, select one or more check box depending on whether or not you want MetroPlanner to display the Fixed/BLSR and ROADM channels in the network design.
- Step 6** Click **Colors and Styles**. The Colors and Styles section comes into focus ([Figure 2-10](#)).

Figure 2-10 General Options—Colors and Styles



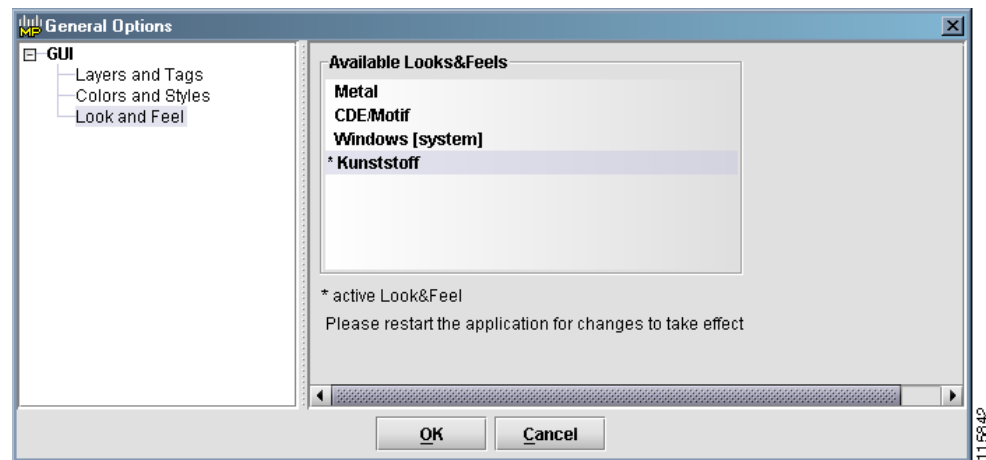
Step 7 Select the color for the items in the window by clicking the rectangles to the right of the text. The Pick a Color window appears (Figure 2-11).

Figure 2-11 Pick a Color Window



- Step 8** Use the Swatches, HSB, or RGB tab to select a new color for the item.
- Step 9** Click **OK** to keep the new color, or click **Reset** to restore the default color.
- Step 10** To change the line style for fibers, selected fibers, channels, selected channels, and ROADM channels, select a new style from the drop-down list in the Style column.
- Step 11** To change the line width for fibers, selected fibers, channels, selected channels, and ROADM channels, select a new width from the drop-down list in the Size column.
- Step 12** To discard all the changes, click **Restore Defaults** at the bottom of the graphic.
- Step 13** Select **Look and Feel**. The Look and Feel section comes into focus ([Figure 2-12](#)).

Figure 2-12 General Options—Look and Feel



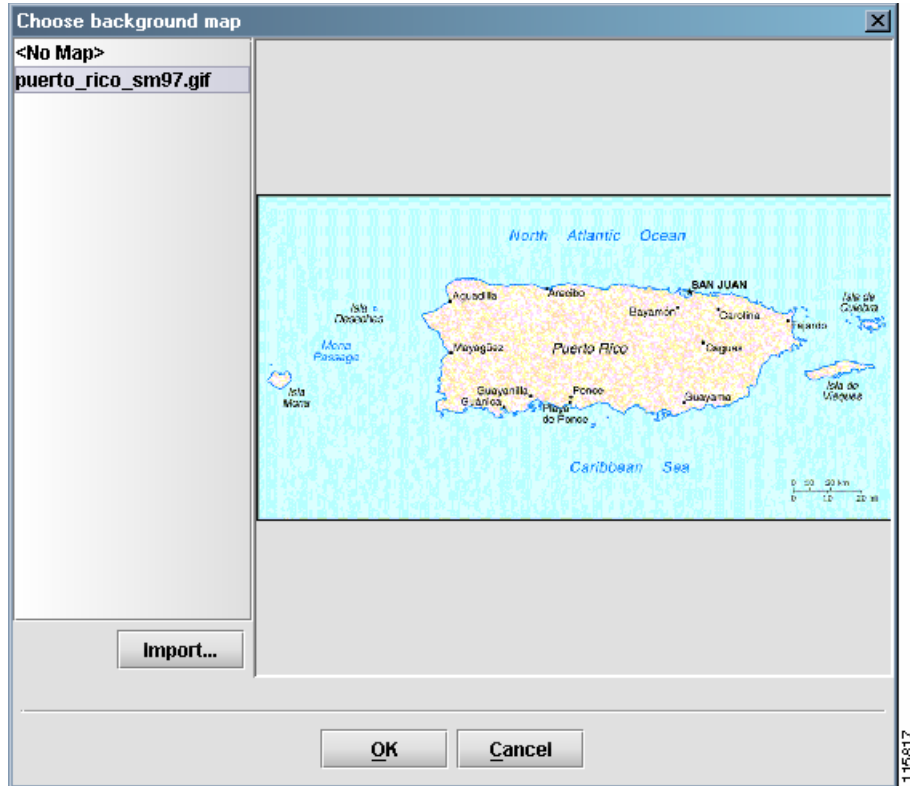
- Step 14** Select appearance for the MetroPlanner application. In order to see the new appearance, you must restart the application. The Windows (system) selection displays the application in your current Windows session.
- Step 15** Click **OK** to keep the changes and close the window.

2.2.4 Customizing the Design Background

You can customize your MetroPlanner window background with a graphic image to enhance the presentation of your network design.

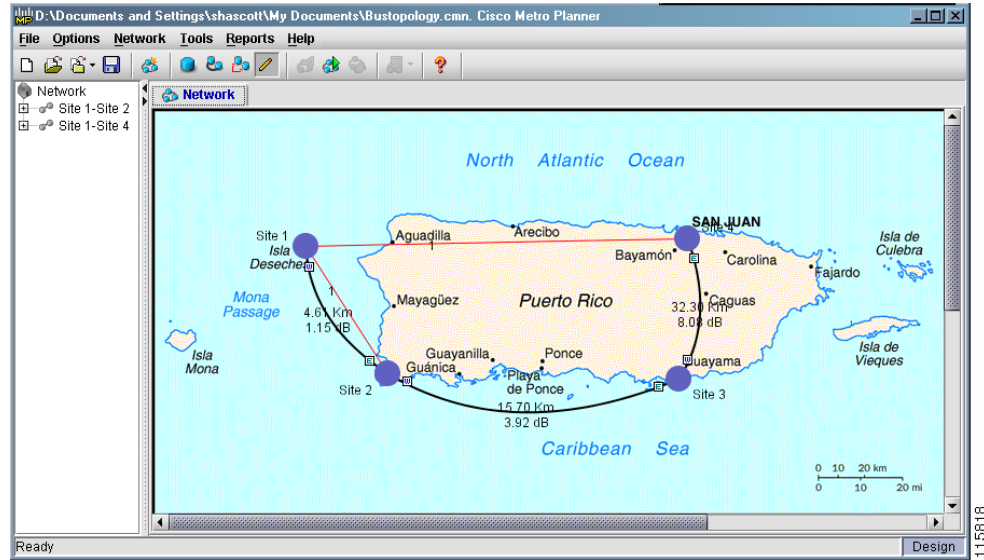
- Step 1** Choose **Options > Background Map** from the menu. The Choose Background Map window appears ([Figure 2-13](#)), allowing you to select a file in JPG or GIF format.

Figure 2-13 Choose Background Map Window



- Step 2** Select a map from the list on the left, or click **Import** to add a new map to the list.
- Step 3** Click **OK**. The file will appear as a background for any new network, or for the network you currently have open (Figure 2-14).

Figure 2-14 Map File Background





Step 4 If the network map does not appear, choose **Options > Show Map** from the menu.

2.3 Creating Networks

In MetroPlanner, network design components consist of sites, spans, and service demands. Components can be added to a network design by selecting the buttons shown in Table 2-1.

Table 2-1 Menu Buttons for Adding Network Design Components

Button	Description
	Network Wizard
	Add Site
	Add Fibre
	Add Channel/Service
	Edit Mode

2.3.1 Adding Networks Using the Network Wizard

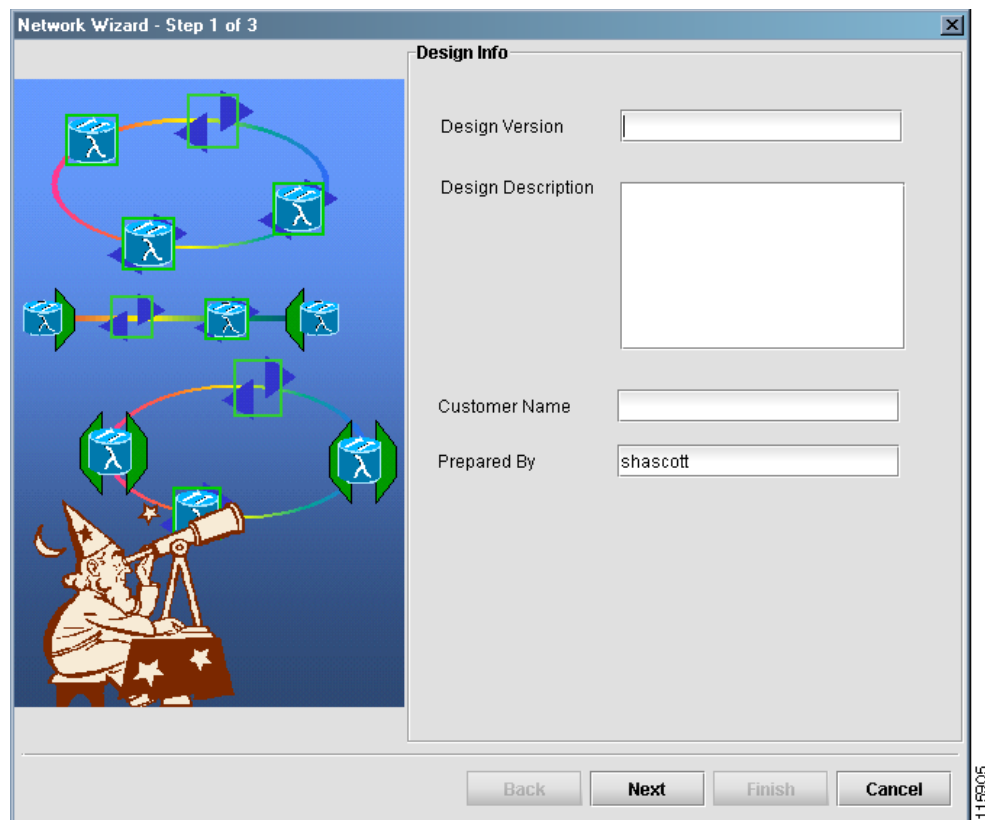
Use the Network Wizard button to add a ring or linear dense wavelength division multiplexing (DWDM) network to the network design. The Network Wizard button allows you to add several sites to the network design in one step.


Note

The Network Wizard feature adds a ring or linear DWDM network with a maximum of 16 active sites.

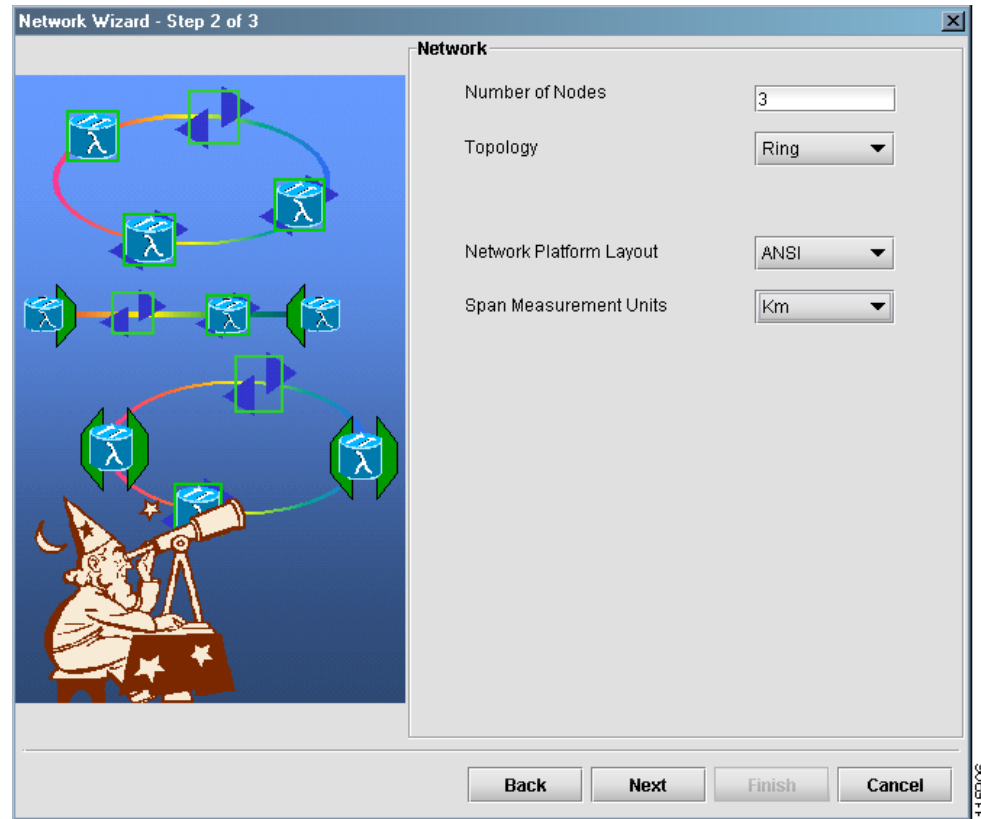
- Step 1** Click **Network Wizard** on the menu bar. The Network Wizard window appears ([Figure 2-15](#)).

Figure 2-15 Network Wizard (Step 1) Window



- Step 2** Enter a name for the designed network in the Design Version field (128 maximum characters).
- Step 3** Enter a description of the designed network in the Design Description field (256 maximum characters).
- Step 4** Enter the name of the customer requiring this network design in the Customer Name field (128 maximum characters).
- Step 5** Enter the name of the person who designed the network in the Prepared By field (128 maximum characters).
- Step 6** Click **Next**. The second panel of the Network Wizard appears ([Figure 2-16](#)).

Figure 2-16 Network Wizard (Step 2) Window



- Step 7** Enter the number of desired nodes in the network in the Number Of Nodes field. The maximum allowed value is 60.



Note The maximum number of non-passthrough ONS 15454 Multi-Service Transport Platform (MSTP) nodes is 16.

- Step 8** Select a topology from the Topology drop-down list. You can choose either a ring or a linear topology.

- Step 9** Select a network platform layout from the Network Platform Layout drop-down list. You can choose either ANSI (the North American standard) or ETSI (the international standard). ANSI networks will not allow you to define SDH (ETSI) service demands. ETSI networks will not allow you to define SONET (ANSI) service demands.

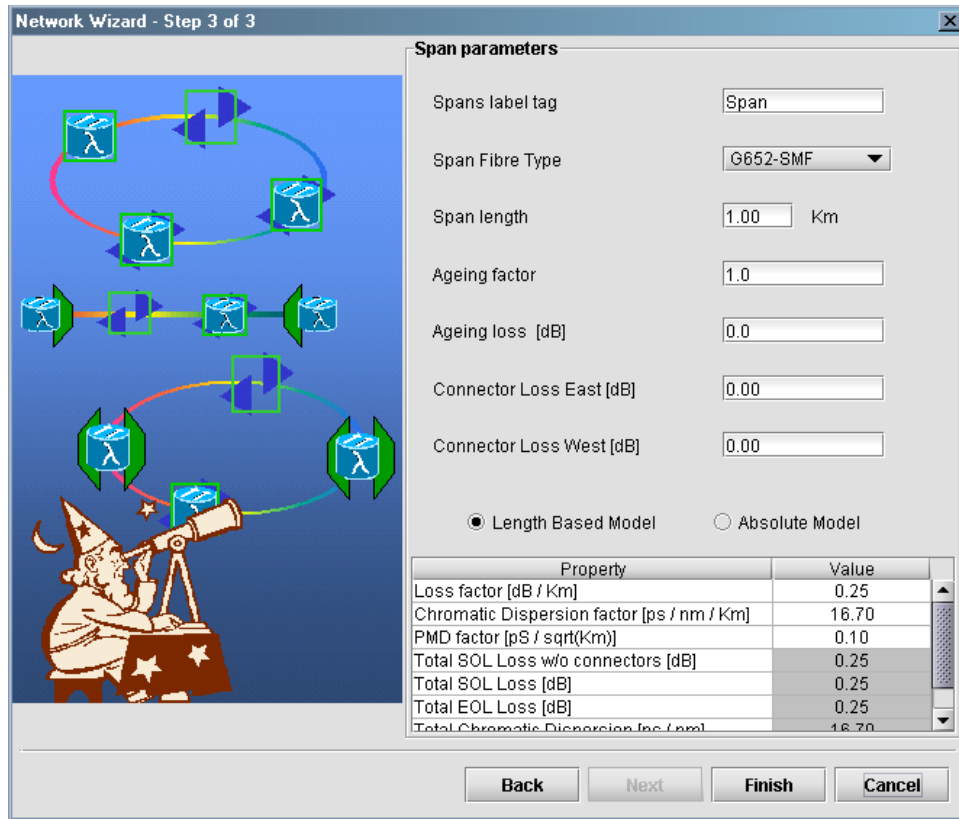


Note After the layout is set for a network, you cannot change the individual sites.

- Step 10** Select the unit of measure that MetroPlanner will use to specify the span length in each span in the Span Measurement Units drop-down list. The span units can be either kilometers (km) or miles.

- Step 11** Click **Next**. The third panel of the Network Wizard appears (Figure 2-17).

Figure 2-17 Network Wizard (Step 3) Window



- Step 12** Enter the substring text that defines the span labels in the Spans Label Tag field. MetroPlanner defines all subsequent spans by adding a sequential number to the label in the Spans Label Tag field (for example, Span 1).
- Step 13** Select a fiber type from the Span Fibre Type drop-down list. The MetroPlanner Analyzer performs a check to make sure that the network contains spans with fiber types that the design algorithm can manage on the same network. If this condition is not met, the analyzer stops analyzing the network and creates an error. The available fiber types are:
- G652-SMF—Supported for both Metro Core and Metro Access
 - E-LEAF—Supported for Metro Core only
 - TW-RS—Supported for Metro Core only
- Step 14** Enter a span length in the Span Length field. The displayed unit of measure is retrieved from the Span Measurements Units field.
- Step 15** Enter the end of life (EOL) aging factor in the Ageing Factor field. This factor is multiplied by the start of life (SOL) total span loss without connectors.
- Step 16** Enter the EOL aging loss in the Ageing Loss field. The EOL loss per span value is added at the end of life to each discrete fiber in the network (for example, to add an EOL margin for splicing).
- Step 17** Enter the concentrated loss at the east end of the span in the Connector Loss East field.
- Step 18** Enter the concentrated loss at the west end of the span in the Connector Loss West field.
- Step 19** Choose either the Length Based Model or the Absolute Model radio button.

- Step 20** If you choose Length Based Model in [Step 19](#), enter values in value fields for the following properties listed in the table at the bottom of the window:
- **Loss Factor**—The value of the SOL fiber loss per kilometer used to calculate the loss of each span in the network. The fiber loss factor is always entered in dB/km, even if you selected miles as the span measurement unit. MetroPlanner automatically converts the loss factor from miles to kilometers.
 - **Chromatic Dispersion factor**—The fiber chromatic dispersion factor. The default value is dependent on the selected fiber type. Any value you enter is lost whenever you change the fiber type. Chromatic dispersion is always entered in ps/nm/km, even if you selected miles as the span measurement unit. MetroPlanner automatically converts the loss factor from miles to kilometers. Fiber chromatic dispersion is defined for the middle of the wavelength band. It is defined at approximately 1545.3 nm.
 - **PMD factor**—The polarization mode dispersion (PMD) factor. The default value is dependent on the selected fiber type. Any value you enter is lost whenever you change the fiber type. PMD is always entered in ps/(√km), even if you selected miles as the span measurement unit. MetroPlanner automatically converts the loss factor from miles to kilometers.
 - **Total SOL Loss w/o Connectors**—The start of life link fiber loss for each span, without the connector concentrated loss. The total SOL loss without connectors is equal to the loss factor multiplied by the length. In the Length Based model, this value is calculated automatically.
 - **Total SOL Loss**—The start of life link fiber loss for each span with the connector concentrated loss contributions. The total SOL loss is equal to the total SOL loss without connectors added to the connector loss west and connector loss east. In the Length Based model, this value is calculated automatically.
 - **Total EOL Loss**—The end of life link fiber loss for each span. In the Length Based model, this value is calculated automatically.
 - **Total Chromatic Dispersion**—The overall link fiber chromatic dispersion for each span. In the Length Based model, this value is calculated automatically.
 - **Total PMD (DGD)**—The differential group delay (DGD) is the difference in arrival times of the two polarization modes at a particular wavelength and time with a specific PMD coefficient. In the Length Based model, this value is calculated automatically.
- Step 21** If you chose Absolute Model in [Step 19](#), enter values in value fields for the following properties listed in the table at the bottom of the window:
- **Total SOL Loss w/o Connectors**—The start of life link fiber loss for each span, without the connector concentrated loss. The total SOL loss without connectors is equal to the loss factor multiplied by the length.
- Step 22** Click **Finish**. MetroPlanner performs a check for fiber factor valid values. If the fiber factor values are within the valid range (refer to [Table 2-2 on page 2-19](#)), MetroPlanner creates a visual representation of the network ([Figure 2-18 on page 2-18](#)). If the values are out of range, MetroPlanner issues a warning, asking you to confirm the input values.

Figure 2-18 Initial Network View

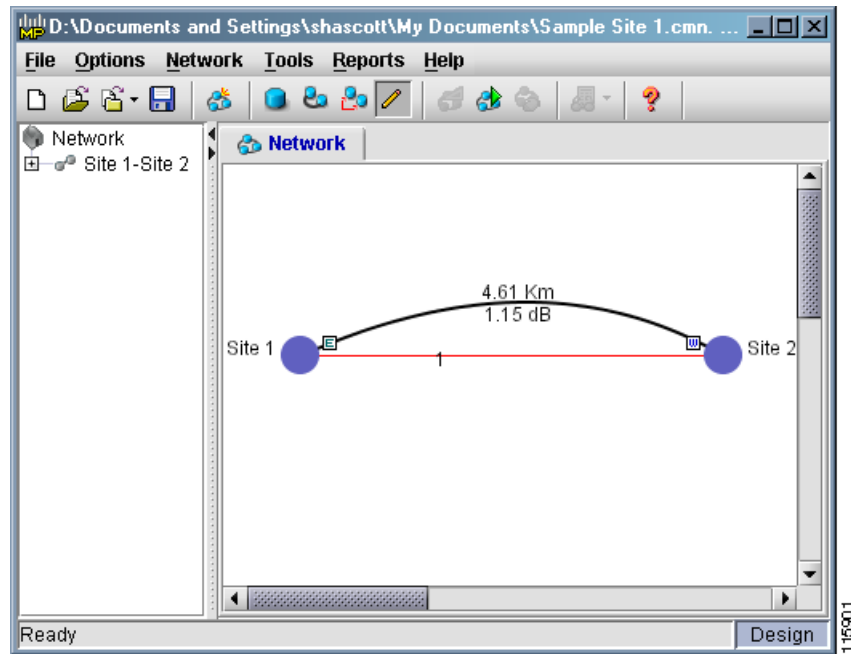


Table 2-2 Valid Ranges for Fiber Coefficient Values

Fiber Type	Parameter	Min Error Value	Min Warning Value	Default Value	Max Warning Value	Max Error Value
G.652-SMF	Loss factor	0 dB/km	0.2 dB/km	(*) dB/km	0.4 dB/km	10 dB/km
	Chromatic Dispersion factor @ 1545.3 nm	0 ps/nm/km	16.2 ps/nm/km	16.7 ps/nm/km	17.1 ps/nm/km	30 ps/nm/km
	PMD factor	0 ps/(√km)	0.0 ps/(√km)	0.1 ps/(√km)	0.5 ps/(√km)	10 ps/(√km)
G.655-E-LEAF	Loss factor	0 dB/km	0.2 dB/km	(*) dB/km	0.4 dB/km	10 dB/km
	Chromatic Dispersion factor @ 1545.3 nm	0 ps/nm/km	3.4 ps/nm/km	3.80 ps/nm/km	4.2 ps/nm/km	10 ps/nm/km
	PMD factor	0 ps/(√km)	0 ps/(√km)	0.1 ps/(√km)	0.5 ps/(√km)	10 ps/(√km)
G.655-TW-RS	Loss factor	0 dB/km	0.2 dB/km	(*) dB/km	0.4 dB/km	10 dB/km
	Chromatic Dispersion factor @ 1545.3 nm	0 ps/nm/km	3.8 ps/nm/km	4.19 ps/nm/km	4.6 ps/nm/km	10 ps/nm/km
	PMD factor	0 ps/(√km)	0 ps/(√km)	0.1 ps/(√km)	0.5 ps/(√km)	10 ps/(√km)

2.3.2 Adding Networks Manually

You can manually add network design elements using the following network design functions: adding sites, adding spans, and adding services.

2.3.2.1 Adding Sites

Use the Site Dialog window to place an empty site in the network design. You can also use the Site Dialog window to build a network manually, bypassing the Network Wizard, or to add new sites to an existing design. A site is a customer premises location where any equipment can be collocated in a rack within a building.

**Note**

MetroPlanner supports up to 60 sites. However, the ONS 15454 DWDM platform will only support up to 16 non-passthrough sites on any given network. Although MetroPlanner will allow you to add more than 16 sites, it will generate errors when the network analysis runs.

**Note**

MetroPlanner R2.5 only supports two fiber spans per site (east and west).

- Step 1** Click **Add Site Mode** on the menu bar. Alternatively, you can right-click in the main window and select Add New Default Site or Add New Site from the shortcut menu. The cursor then changes to a hand holding a blue circle.
- Step 2** Double-click the MetroPlanner window at the point where you want to place the new site. The Site Dialog window appears ([Figure 2-19](#)).

Figure 2-19 Site Dialog Window

Site Dialog

NE Site Parameters

Site Name: Site 4

Site IP Address (Opt.): 255.255.255.4

Site MTTR (hours): 2.0

Maint. Centre Name: [dropdown]

Shelf Layout: ANSI

NE Site Type

Configuration: Auto

Equipment: Auto

Hybrid Node Config: ☐

NE Site Amplifier

Preamplifier West Side: AUTO

Booster West Side: AUTO

Preamplifier East Side: AUTO

Booster East Side: AUTO

OK Cancel

- Step 3** Enter the name of the site in the Site Name field.
- Step 4** Enter the site IP address (if desired) in the Site IP Address field.
- Step 5** Enter the site MTTR hours in the Site MTTR field.

- Step 6** Select the maintenance center that will support this site in the Maint. Centre Name field. If there are no listed maintenance centers, create one using the steps in the “[2.9.6 Establishing Maintenance Centers](#)” section on page 2-71.
- Step 7** Select an ANSI or ETSI shelf layout in the Shelf Layout field.
- Step 8** Select a network element (NE) site type in the Configuration field. The choices are:
- Auto—The site type is determined based on the network analysis.
 - Hub—The site is a hub site.
 - Terminal—The site is a full (32 channel) terminal site.
 - ROADM—The site is an ROADM site with a single- or double-slot 32 DMX demultiplexer.
 - OADM Full—The site is a full OADM site.
 - OADM Active—The site is an active (amplified) OADM site.
 - OADM Passive—The site is a passive (non-amplified) OADM site.

Hub, terminal, and ROADM sites support the equipment listed in [Table 2-3](#). OADM Full Configuration sites are always implemented using 32 MUX-O and 32 DMX-O cards.

Table 2-3 Site Equipment

Site Configuration	Supported Equipment
Hub	Auto (default)
	32MUX-O/32DMX-O
	32 WSS/32 DMX
	32 WSS/32 DMX-O
Terminal	Auto (default)
	32MUX-O/32DMX-O
	32 WSS/32 DMX
	32 WSS/32 DMX-O
ROADM	32 WSS/32 DMX (default)
	32 WSS/32 DMX-O

- Step 9** Select the set of cards required for the selected configuration from the list in the Equipment field. Available choices are Auto, 32 Channel Mux/Demux, 32WSS/32DMX, and 32WSS/32DMX-O.
- Step 10** If this site is part of a hybrid node configuration, check the Hybrid Node Config check box. Hybrid node configuration is only available if you select Auto, OADM Active, OADM Passive, Line Amplifier, or Terminal.
- Step 11** In the Preamplifier West Side field, select whether to place a preamplifier on the west side of the node. If you select Auto, MetroPlanner decides whether to place the item automatically. This option is not available if you selected OADM Passive as the site type.
- Step 12** In the Booster West Side field, select whether to place a booster amplifier on the west side of the node. If you select Auto, MetroPlanner decides whether to place the item automatically. This option is not available if you selected OADM Passive as the site type.
- Step 13** In the Preamplifier East Side field, select whether to place a preamplifier on the east side of the node. If you select Auto, MetroPlanner decides whether to place the item automatically. This option is not available if you selected OADM Passive as the site type.

- Step 14** In the Booster East Side field, select whether to place a booster amplifier on the east side of the node. If you select Auto, MetroPlanner decides whether to place the item automatically. This option is not available if you selected OADM Passive as the site type.
- Step 15** Click **OK** to place the site, or **Cancel** to quit. The site appears as a blue icon, with the site name appearing below it.
- Step 16** To edit the site, click **Edit Mode** on the menu bar, then double-click the site you want to edit. The Site Dialog window (Figure 2-19) appears, allowing you to make changes to the site.

2.3.2.2 Adding Fiber Spans

After adding the sites, use the Add Fibre Mode feature to draw the fiber spans between sites. A fiber span consists of a pair of fibers (one transmit and one receive) between two sites.

- Step 1** Click **Add Fibre Mode** on the menu bar. The cursor changes to a pencil with a series of numbers beside it.
- Step 2** Click one of the sites you want to connect with a fiber span. This site will be the source site for later network analysis output.
- Step 3** Move the cursor to the other site. When you move the cursor, a line appears between the two sites. This site will be the destination site for later network analysis output.
- Step 4** Click the destination site. The Fibres Dialog window appears (Figure 2-20).

Figure 2-20 *Fibres Dialog Window*

Site A	Site B	Label	Loss BOL (dB)	Loss EOL (dB)	Dispersion
Site 1	Site 2	Span 1	1.15	1.35	76.99
Site 2	Site 1	Span 2	0.25	0.25	16.70

Span parameters

Span label:

Span Fibre Type:

Span length: Km

Ageing factor:

Ageing loss [dB]:

Connector Loss East [dB]:

Connector Loss West [dB]:

☒ Length Based Model ☐ Absolute Model

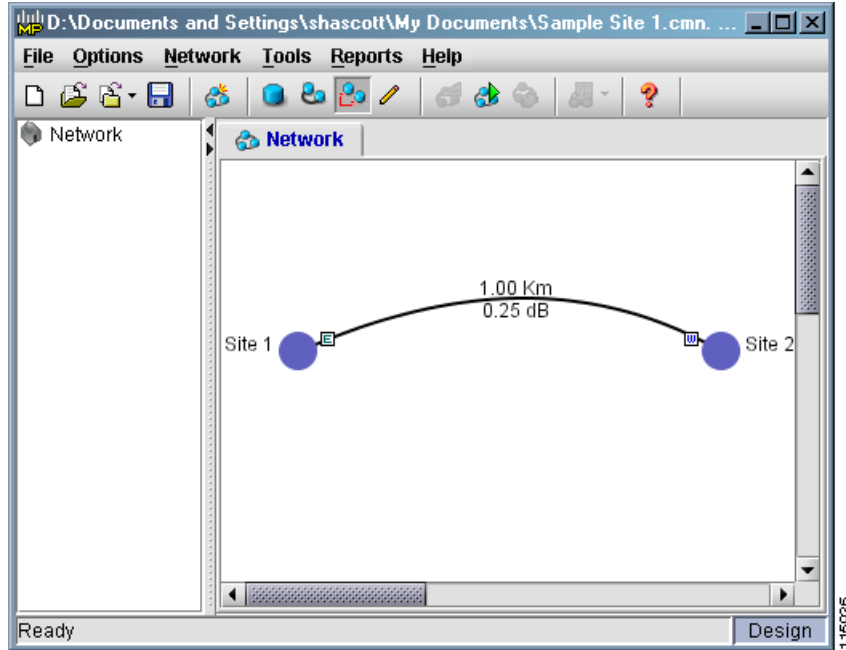
Property	Value
Loss factor [dB / Km]	0.25
Chromatic Dispersion factor [ps / nm / Km]	16.70
PMD factor [ps / sqrt(Km)]	0.10
Total SOL Loss w/o connectors [dB]	0.25
Total SOL Loss [dB]	0.25
Total EOL Loss [dB]	0.25
Total Chromatic Dispersion [ps / nm]	16.70

OK

- Step 5** Enter the name of the span displayed on the network design in the Span Label field. MetroPlanner automatically generates a default span name, starting with “Span 1”, and numbering sequentially. A second span would have the default name of “Span 2”.

- Step 6** Select the fiber type from the Span Fibre Type drop-down list.
- Step 7** Enter the length of the span, in kilometers, in the Span Length field.
- Step 8** Enter the EOL aging factor in the Ageing Factor field.
- Step 9** Enter the EOL aging loss in the Ageing Loss field. The EOL loss per span value is added at the EOL to each discrete fiber in the network.
- Step 10** Enter the concentrated loss at the east end of the span in the Connector Loss East field.
- Step 11** Enter the concentrated loss at the west end of the span in the Connector Loss West field.
- Step 12** Choose either the Length Based Model or the Absolute Model radio button.
- Step 13** If you choose Length Based Model in [Step 12](#), enter values in value fields for the following properties listed in the table at the bottom of the window:
- **Loss Factor**—The value of the start of life fiber loss per kilometer used to calculate the loss of each span in the network. The fiber loss factor is always entered in dB/km, even if you selected miles as the span measurement unit. MetroPlanner automatically converts the loss factor from miles to kilometers.
 - **Chromatic Dispersion factor**—The fiber chromatic dispersion factor. The default value is dependent on the selected fiber type. Any value you enter is lost whenever you change the fiber type. Chromatic dispersion is always entered in ps/nm/km, even if you selected miles as the span measurement unit. MetroPlanner automatically converts the loss factor from miles to kilometers. Fiber chromatic dispersion is defined for the middle of the wavelength band. It is defined at approximately 1545.3 nm.
 - **PMD factor**—The PMD factor. The default value is dependent on the selected fiber type. Any value you enter is lost whenever you change the fiber type. PMD is always entered in ps/(√km), even if you selected miles as the span measurement unit. MetroPlanner automatically converts the loss factor from miles to kilometers.
 - **Total SOL Loss w/o Connectors**—The start of life link fiber loss for each span, without the connector concentrated loss. The total SOL loss without connectors is equal to the loss factor multiplied by the length. This field is read-only.
 - **Total SOL Loss**—The start of life link fiber loss for each span with the connector concentrated loss contributions. The total SOL loss is equal to the total SOL loss without connectors added to the connector loss west and connector loss east. This field is read-only.
 - **Total EOL Loss**—The end of life link fiber loss for each span. This field is read-only.
 - **Total Chromatic Dispersion**—The overall link fiber chromatic dispersion for each span. This field is read-only.
 - **Total PMD (DGD)**—The DGD is the difference in arrival times of the two polarization modes at a particular wavelength and time with a specific PMD coefficient. This field is read-only.
- Step 14** If you chose Absolute Model in [Step 13](#), enter values in value fields for the following properties listed in the table at the bottom of the window:
- **Total SOL Loss w/o Connectors**—The start of life link fiber loss for each span, without the connector concentrated loss. The total SOL loss without connectors is equal to the loss factor multiplied by the length.
- Step 15** Click **OK** to place the span. The span length appears between the selected sites ([Figure 2-21](#)).

Figure 2-21 Sample Span Length Between Two Sites



2.3.2.3 Adding Services

Adding services between sites allows you to specify the fixed service requests that are needed between two sites.

- Step 1** Click **Add Channel Mode** on the menu bar. The cursor changes to a pencil with arrows pointing in opposite directions beside it.
- Step 2** Click and release on one of the sites to which you want to add a channel.
- Step 3** Move the cursor to the other site. When you move the cursor, a line appears between the two sites.
- Step 4** Click the destination site. The Service Demand Dialog window appears (Figure 2-22).

Figure 2-22 Service Demand Dialog Window

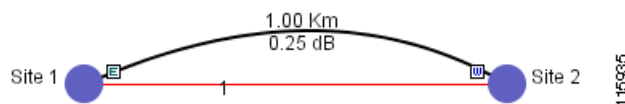
- Step 5** Enter a label for identifying the service in the Service Label field.
- Step 6** In the Present Demand area, enter the present number of demand channels required in the Num of Channels field.
- Step 7** In the Forecast Demand area, enter the total number of channels that will be needed in the future in the Num of Channels field. The value should be the number of channels needed on day one plus the number of channels the network will need to accommodate future growth.
- Step 8** Select a Client Service Type for the channel. The choices are:
- OC-3/12/48/192 (ANSI)
 - STM-1/4/16/64 (ETSI)
 - Gigabit Ethernet
 - 10GE—10 Gigabit Ethernet
 - Fibre Channel
 - Fibre Channel 2G
 - Fibre Channel 10G
 - 1G FICON (1 Gigabit Ethernet—FICON)
 - 2G FICON (2 Gigabit Ethernet—FICON)
 - ISC-Compat (ISC-1)
 - ISC-Peer (ISC-3)
 - Sysplex ETR (Sysplex External Time Reference)
 - Sysplex CLO (Sysplex Control Link Oscillator)
 - ESCON—Enterprise System Connection

2.3.3 Creating an ROADM Traffic Group

- D1 Video
- SDI—Serial digital interface
- HDTV—High-definition television
- DV-6000
- 2R Any Rate
- 15530 10-Gbps Aggregate
- 15530 2.5-Gbps Aggregate
- 15530 MR Transport
- 15530 Data MXP

- Step 9** Select a protection type from the Protection Type field. The four protection types are Client 1+1, Fiber Switched, Unprotected, and Y-Cable.
- Step 10** In the Optical Bypass area, enter the number of channels for the optical bypass in the Num. of Ch. field. The number of optical bypass channels must be less than the number of channels listed in the Present Demand area.
- Step 11** Select an optical bypass site name from the Site Name drop-down list.
- Step 12** Choose a DWDM interface type. The two choices are Transponder and Line Card.
- Step 13** Select a DWDM Card Type from the drop-down list.
- Step 14** Select a Client Interface Source from the drop-down list.
- Step 15** Select a Client Interface Destination from the drop-down list.
- Step 16** Click **OK** to place the channel, or **Cancel** to quit. If you click OK, a line representing the channel appears between the two sites (Figure 2-23). The line has a number above it that indicates the number of channels present.

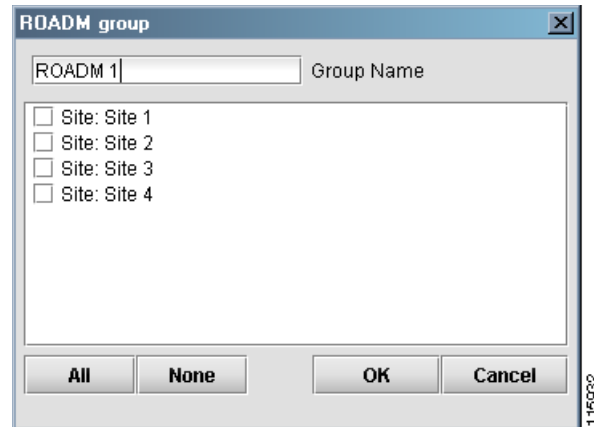
Figure 2-23 Sample Channel Between Two Sites



2.3.3 Creating an ROADM Traffic Group

MetroPlanner allows you to create ROADM traffic groups for a defined list of nodes.

- Step 1** Right-click the Network folder in the traffic view. A menu appears.
- Step 2** Select **Add ROADM Group** from the menu. The ROADM Group window appears (Figure 2-24).

Figure 2-24 ROADM Group Window

- Step 3** Enter a name for the group in the Group Name field.
- Step 4** Click the check boxes beside the nodes you want to include in the ROADM group. Only Auto, ROADM, and Terminal sites are available. Refer to the [“2.3.2.1 Adding Sites”](#) section on page 2-19 for more information.
- Step 5** Click **All** to add all the sites to the group.
- Step 6** Click **None** to remove all the sites from the group.
- Step 7** Click **OK** to create the group, or **Cancel** to close the window without creating the group.
-

2.3.4 Creating an ROADM Demand

MetroPlanner allows you to manually create ROADM demands for the selected ROADM traffic group.

- Step 1** Right-click on an ROADM traffic group. A menu appears.
- Step 2** Select **Add Demand > Roadm** from the menu. The Demand Dialog window appears ([Figure 2-25](#)).

Figure 2-25 Demand Dialog Window

Yes/No	Client Interface	Y Protected	1+1 Protected	Supported Se
<input checked="" type="checkbox"/>	10G MR TXP w/FEC	<input checked="" type="checkbox"/>	<input checked="" type="checkbox"/>	10GE
<input type="checkbox"/>	10G MR TXP w/o FEC	<input checked="" type="checkbox"/>	<input checked="" type="checkbox"/>	10GE
<input type="checkbox"/>	10Gbps LR ITU-T	<input type="checkbox"/>	<input checked="" type="checkbox"/>	
<input checked="" type="checkbox"/>	2.5G MR TXP 2R Mode	<input checked="" type="checkbox"/>	<input checked="" type="checkbox"/>	ESCON, HDTV
<input type="checkbox"/>	2.5G MR TXP 2R Mode (Fiber Switched)	<input type="checkbox"/>	<input type="checkbox"/>	ESCON, HDTV
<input checked="" type="checkbox"/>	2.5G MR TXP w/FEC	<input checked="" type="checkbox"/>	<input checked="" type="checkbox"/>	Gigabit Ethernet
<input type="checkbox"/>	2.5G MR TXP w/FEC (Fiber Switched)	<input type="checkbox"/>	<input type="checkbox"/>	Gigabit Ethernet
<input type="checkbox"/>	2.5G MR TXP w/o FEC	<input checked="" type="checkbox"/>	<input checked="" type="checkbox"/>	
<input type="checkbox"/>	2.5G MR TXP w/o FEC (Fiber Switched)	<input type="checkbox"/>	<input type="checkbox"/>	
<input type="checkbox"/>	2.5Gbps ELR ITU-T	<input type="checkbox"/>	<input checked="" type="checkbox"/>	
<input type="checkbox"/>	4x2.5Gbps MXP w/FEC	<input checked="" type="checkbox"/>	<input checked="" type="checkbox"/>	
<input type="checkbox"/>	4x2.5Gbps MXP w/o FEC	<input checked="" type="checkbox"/>	<input checked="" type="checkbox"/>	

- Step 3** Enter a name for the demand in the Demand Name field.
- Step 4** Select a traffic type from the drop-down list. If you select Hub, the First Site drop-down button becomes available. If you selected Meshed, skip to [Step 6](#).
- Step 5** For Hub traffic types, select the originating site from the First Site drop-down list.
- Step 6** Select a connectivity type from the Connectivity drop-down list. The connectivity choices are Protected, Unprotected Minimum Hop, Unprotected Optimum Path, and Unprotected Subnet. Refer to the [“1.6.3 ROADM Traffic Groups”](#) section on page 1-8 for more information on the connectivity choices. If you select Unprotected Subnet, the two drop-down buttons to the right of the Connectivity drop-down button become available. Skip to [Step 8](#) if you selected any other connectivity type.
- Step 7** Select the subnet starting node and outgoing side from the two drop-down buttons beside the Connectivity drop-down button.
- Step 8** Check the boxes for one or more service types for the ROADM demand from the list in the left panel.
- Step 9** You can further refine your choices in the right panel by adding client interfaces, and by choosing protection types. You can select more than one client interface to support the same service type. All the client interfaces supporting each selected service type are shown in the right panel. Client interfaces that only support unrequired service types are unavailable. MetroPlanner, by default, checks the best client interface to support each service. The protection check boxes allow you to define the type of protection that is supported for the selected client interface. These check boxes are only available when:
- The selected connectivity type is Protected
 - The client interface is not Fiber Switched
 - The Yes/No check box is checked
- Step 10** Click **OK** to create the demand, or **Cancel** to close the window without saving any changes.

2.3.5 Creating a Protected Ring Network

MetroPlanner allows you to create protected ring networks.

- Step 1** Create a ring network using either the procedures in the [“2.3.1 Adding Networks Using the Network Wizard” section on page 2-14](#) or by manually placing sites into a ring configuration.
- Step 2** Select **Tools > Create P-Ring** from the menu. The New Protected Ring window appears ([Figure 2-26](#)).

Figure 2-26 New Protected Ring Window

- Step 3** Enter the number of present demand channels in the Num. of Channels field.
- Step 4** Enter the number of forecasted demand channels in the second Num. of Channels field.
- Step 5** Select a service type from the Client Service Type drop-down list.



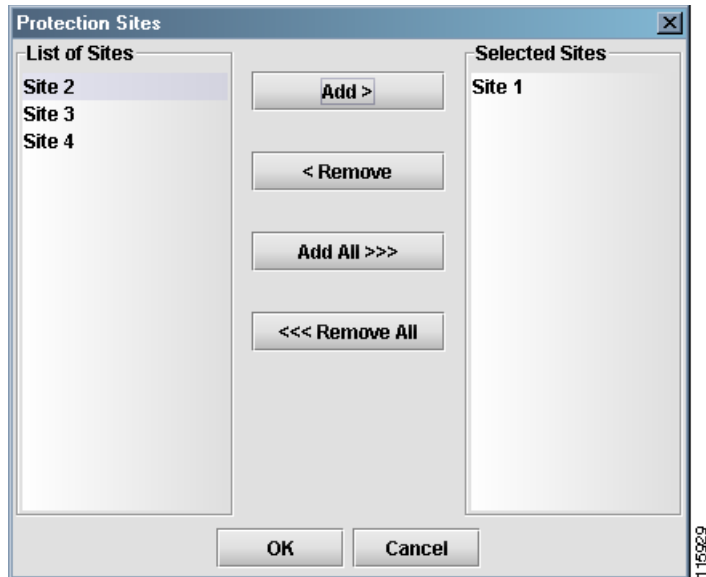
Note Refer to the [“2.3.2.3 Adding Services” section on page 2-24](#) for a detailed list of the items in the Client Equipment Type and Client Service Type fields.

- Step 6** In the Protection Sites area, click **All Sites** to add all the sites in the ring as protection sites, or click **Edit** to add individual sites. Clicking Edit displays the Protection Sites window ([Figure 2-27](#)).



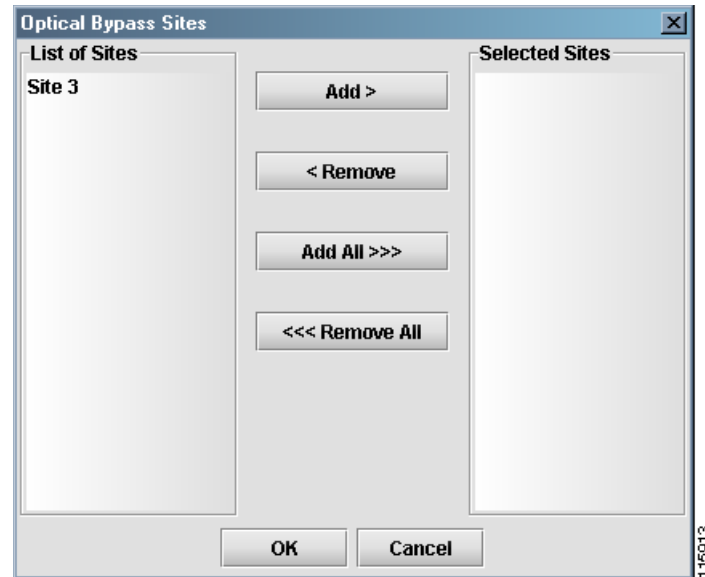
Note If you click All Sites, skip to [Step 13](#).

Figure 2-27 Protection Sites Window



- Step 7** Select one or more sites in the List of Sites area.
- Step 8** Click **Add** to add the sites to the Selected Sites area.
- Step 9** Click **Add All** to add all of the sites to the Selected Sites area.
- Step 10** Select one or more sites in the Selected Sites area and click **Remove** to remove sites from the area.
- Step 11** Click **Remove All** to remove all of the sites from the Selected Sites area.
- Step 12** Click **OK** to display the selected protection sites in the Protection Sites area of the New Protected Ring window. Click **Cancel** to close the window without making any changes.
- Step 13** If you want to add optical bypass sites, click **Edit** in the Optical Bypass area. The Optical Bypass Sites window appears (Figure 2-28). If you do not want to add optical bypass sites, proceed to [Step 20](#).

Figure 2-28 Optical Bypass Sites Window



The Optical Bypass Sites window lists any sites that are not part of the protection scheme.

- Step 14** Select one or more sites in the List of Sites area.
- Step 15** Click **Add** to add the sites to the Selected Sites area.
- Step 16** Click **Add All** to add all of the sites to the Selected Sites area.
- Step 17** Select one or more sites in the Selected Sites area and click **Remove** to remove sites from the area.
- Step 18** Click **Remove All** to remove all of the sites from the Selected Sites area.
- Step 19** Click **OK** to display the bypass sites in the Optical Bypass area of the New Protected Ring window. Click **Cancel** to close the window without making any changes.
- Step 20** Choose a DWDM interface type.
- Step 21** Select a DWDM card type from the drop-down list.
- Step 22** Select a client interface source from the drop-down list.
- Step 23** Click **OK** to create the protected ring group, or click **Cancel** to close the window without saving any changes.

2.4 Analyzing the Network

After you have placed the desired sites, spans, and service demands, click **Analyze Network** to examine the network performance. MetroPlanner automatically optimizes the design and summarizes the optical transmission performance in a summary report.

The Analyzer perform the following checks concerning the Any-to-Any and Any Client pattern:

- ROADM nodes cannot be used in conjunction with following node types:
 - HUB/Full-OADM (multi-hubbed ring cannot have ROADM units)

- OADM (both active and passive)

**Note**

These constraints allows MetroPlanner to simultaneously define ROADM (Any-to-Any), fixed and P-Ring traffic on the same network if all the added/dropped sites are ROADM, and if neither OADM nor Hub/Full-OADM sites are defined in the same network (with the exception of linear networks, where end sites must be terminal sites).

- Networks with Any-to-Any clients only support 32-channel Metro-Core algorithms.

After the network has been analyzed, MetroPlanner changes the appearance of the boosters and preamplifiers associated with the sites ([Figure 2-29](#)).

Figure 2-29 *Booster and Preamplifier Examples*

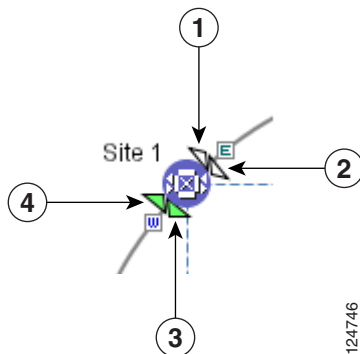


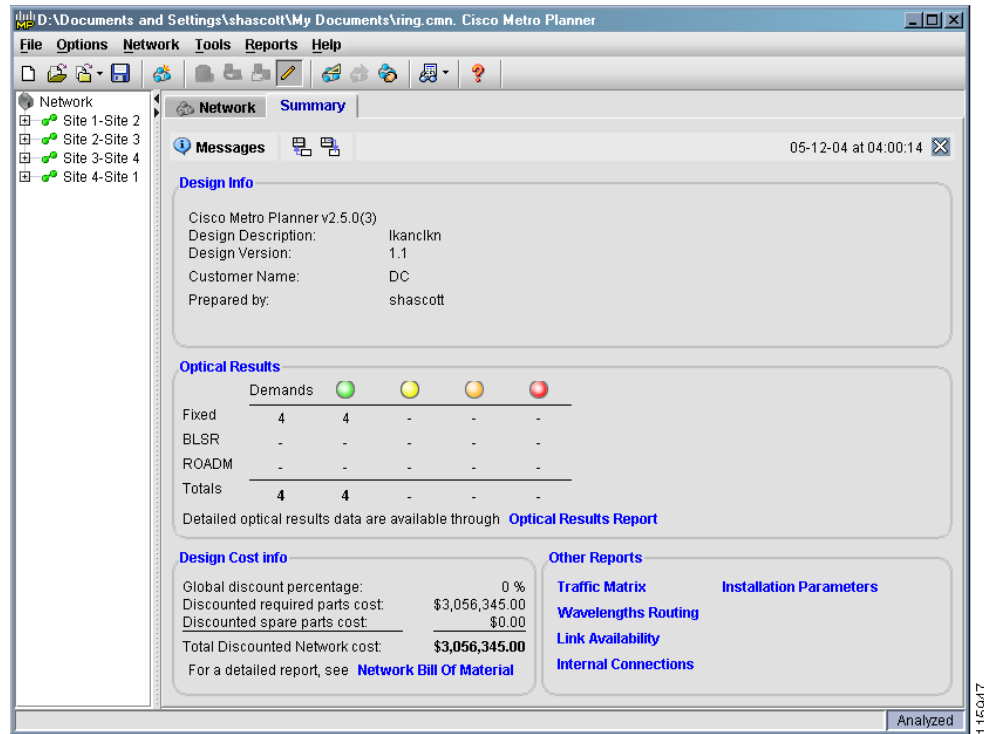
Table 2-4 *Booster and Preamplifier Example Legend*

Number	Description
1	East booster—unforced
2	East preamplifier—unforced
3	West booster—forced
4	West preamplifier—forced

2.4.1 Network Analysis Summary Tab

The Summary tab ([Figure 2-30](#)) is divided into four areas: Design Info, Optical Results, Design Cost Info, and Other Reports. The Design Info area displays information about the network. It is similar to the information found in the Add Network Wizard window ([Figure 2-15](#)).

Figure 2-30 Summary Tab



The Optical Results area displays the number of fixed, BLSR, and ROADM demands. The color in the columns indicate whether or not the current network design meets the requirements for the start to end of the equipment life. If a cell is green, the current design meets the requirements. If a cell is yellow or orange, the design is marginal. If the cell is red, the current network design does not meet the requirements for proper operation. Click the blue Optical Results Report text to view the Optical Results tab.

The Design Cost Info area displays the global discount percentage, the discounted required parts cost, the discounted spare parts cost, and the total discounted network cost. Click the blue Network Bill Of Material text to view the network bill of materials.

The Other Reports area allows you to view other MetroPlanner reports by clicking on the different selections in the area.

2.4.2 Viewing the Optical Results Tab

The Optical Results tab allows you to view the optical results of the network you created and analyzed.

- Step 1** You can launch the Optical Results tab from the Summary window, or by selecting **Reports > Optical Results** from the menu. The Optical Results tab (Figure 2-31) appears.

2.4.2 Viewing the Optical Results Tab

Figure 2-31 Optical Results Tab



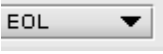
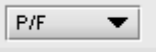



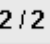



#	SOL	EOL	Traffic Group Label	Srv. Circuit Label	P/F	Source	Dest	Side	Protect	Wavelength	Span (km)	TX Type
1	●	●	Fixed	Site 1-Site 2_1_1.1	P/F	Site 1	Site 2	East	Client 1+1	58.1	1.61	10G MR TXP w/FEC
	●	●			P/F	Site 2	Site 1	West		58.1	1.61	
1	●	●		Site 1-Site 2_1_1.2	P/F	Site 2	Site 1	East		58.1	4.83	10G MR TXP w/FEC
	●	●			P/F	Site 1	Site 2	West		58.1	4.83	
2	●	●	Fixed	Site 1-Site 2_1_2.1	P/F	Site 1	Site 2	East	Client 1+1	58.9	1.61	10G MR TXP w/FEC
	●	●			P/F	Site 2	Site 1	West		58.9	1.61	
2	●	●		Site 1-Site 2_1_2.2	P/F	Site 2	Site 1	East		58.9	4.83	10G MR TXP w/FEC
	●	●			P/F	Site 1	Site 2	West		58.9	4.83	

Table 2-5 displays the various buttons and lists that appear on all the tabs.

Table 2-5 Tab Icons

Button	Description
	Expand Header—Shows an expanded view of the header, including design information.
	Shrink Header—Shows the default view of the header, without the additional design information.
	Dock View to Bottom Area—Moves the tab information to the bottom of the screen.
	Dock View to Center Area—Moves the tab information from the bottom area to the default center view.
	Undock View on Desktop—Moves the tab information to a separate window on the desktop. Click Dock View to Center Area or Dock View to Bottom Area to move the tab information back to the tab view.
	Export Report—Opens the Export Report window, which allows you to export the tab information to a text or HTML file.
	Show Messages Detail—Opens the Analyzer Messages window, which shows you any messages pertinent to the current network design.

Table 2-5 Tab Icons (continued)

Button	Description
 Errors	Show Errors Detail—Opens the Analyzer Messages window, which displays any error messages that occurred when you analyzed the network. It indicates that the network may not be feasible.
 New query	Run New Query—Opens the Optical Results Query Dialog Window .
	The EOL drop-down list allows you to filter the tab information. You can select start-of-life (SOL) information, EOL information, or both.
	The P/F drop-down list allows you to filter the tab information for present information, forecast information, or both.
	Go to the first page of the report.
	Go back 10 pages in the report.
	Go to the previous page.
	Displays the current page number and the total number of pages in the report.
	Go to the next page.
	Go forward 10 pages in the report.
	Go to the last page in the report.

Step 2 To change the table view to show SOL information, EOL information, or both, chooses a view from the SOL/EOL Filter drop-down list.

Each row in the tab shows the performance of one optical path. A protected channel has two paths, and therefore four rows. [Table 2-6](#) describes the information in the columns.

Table 2-6 Network Optical Channel Results Tab Columns

Column Label	Description
#	Displays the identification number automatically given to each path in the order that the channels were entered into the design.
SOL	Displays the results of the start of life analysis. The indicator displays the optical performance for the path. Green indicates success, yellow indicates success with a marginal failure risk (between 0-16%), orange indicates the channel has a higher risk of failure (between 16-50%), and red indicates failure.

Table 2-6 Network Optical Channel Results Tab Columns (continued)

Column Label	Description
EOL	Displays the end of life analysis. The indicator displays the optical performance for the path at the end of the fiber's life. Green indicates success, yellow indicates success with a marginal failure risk (between 0-16%), orange indicates the channel has a higher risk of failure (between 16-50%), and red indicates failure.
Traffic Group Label	Displays the Traffic Group name for ROADM and P-Ring traffic. Displays the predefined string "Fixed" for fixed traffic.
Srv Circuit Label	Displays the service circuit name. This field is optionally entered from the Channel Dialog window.
P/F	Displays the present/forecast services indication.
Source	Displays the name of the source site.
Dest	Displays the name of the destination site.
Side	Identifies the side of the source site that each path of the service circuit leaves.
Protect	Displays the protection type of the channel. For a protected channel, both paths are shown. The path leaving the east side of the source is shown first.
Wavelength	Displays the assigned wavelength of the optical path.
Span (km)	Displays the total span (source -> destination) for this path in kilometers.
TX type	Displays the type of transceiver that is the DWDM Card Type (see 2.3.2.3 Adding Services).
BER target	Displays the bit error rate (BER) target for this channel based on the capability of the channel's optical interface. It is 1.0E-15 for the interfaces using forward error correction (FEC) and 1.0E-12 for interfaces without FEC.
OSNR (dB)	Displays the SOL/EOL average OSNR value at the receiver. OSNR refers to the selected RBW bandwidth.
OSNR Margin	Displays the OSNR margin.
RX (dBm)	Displays the SOL and EOL received average power at the destination site.
Power Margin (dB)	Displays the power budget margin at the receiver. It is defined as the offset between the receiver working point and the "BER curve with margin." A positive value indicates no power problems.
Overload Margin (dB)	Displays the overload margin at the receiver. A positive value indicates no overload problems.
RX atten	Displays the attenuator at the input of the receiver.
PMD (ps)	Displays the calculated total PMD for each circuit. If the overall PMD for the link overcomes the maximum allowed, the PMD value is colored red. The maximum allowed value depends on the client interface. For these special cases, the network must be manually resolved by contacting a Cisco optical sales engineer.
Latency	Displays the latency time for the current circuit.
Chr Disp Check	Displays the status of the chromatic dispersion check. Green indicates that the dispersion check passed. Red indicates that the dispersion check failed.

Step 3 Use the directional buttons at the bottom of the tab to scroll forward and backward through the optical results pages.

- Step 4** Click **Shrink Header** to hide all the table header information.
- Step 5** Click **Export Report** to export the optical results information to a file. You can save the file as an HTML file, or as a tab-separated text file that can be opened by several applications.
- Step 6** Click **New Query** to open the Optical Results Query Dialog window (Figure 2-32). The Optical Results Query Dialog window allows you to filter the optical results using a variety of parameters and templates.

Figure 2-32 Optical Results Query Dialog Window

Table 2-7 describes the fields on the Optical Results Query Dialog Window.

Table 2-7 Optical Results Query Dialog Window Fields

Column Label	Description
Group	Selecting a traffic group filters the report to include only the data in the selected group. You can also view groups on the tree view under the Network root.
Demand	Selecting a traffic demand filters the report to include only the data in the selected demand. The demand field is available only when you select a specific traffic group.
DWDM Card Type	Selecting a card type filters the report to include only the data in the selected DWDM card type.
Site A / Site B	Allows you to filter only the results of incoming/outgoing services to or from a specific site (if you select Any), or between a pair of sites (if both are specified).

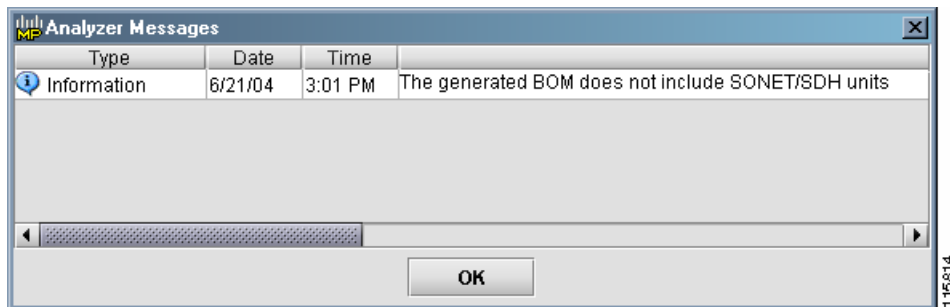
Table 2-7 Optical Results Query Dialog Window Fields (continued)

Column Label	Description
Direction	Allows you to filter for services that are routed in the specified direction. The direction refers to the fiber transmitting direction.
Wavelength	Allows you to filter for services using the specified wavelength.
Alarm	Allows you to filter for services flagged with a green, yellow, orange, or red indicator.
P/F	Allows you to filter for present services, forecast services, or both.
Virtual	Allows you to include or exclude virtual channels in the Optical Results Table.

- Step 7** To perform a query using individual parameters, select the desired parameters from the 10 drop-down lists in the Query Definition area. The selected parameters appear in the Query Preview area at the bottom of the screen.
- Step 8** To perform a query using a pre-defined query template, select a template from the Query Templates drop-down list and click **Init From Template**. The parameters included in the template appear in the Query Preview area.
- Step 9** Click **Run Query**. The window closes, and the query results appear in the Optical Results tab. The parameters of the query appear in the horizontal area just below the button bar.
- Step 10** Click **Reset Query** to clear your selections in the Optical Results Query Dialog window, or click **Close** to close the window without running a query.
- Step 11** To view a demand's optical channel result at any time, right-click on the desired traffic demand in the tree view and select Optical Results.
- Step 12** Click **Messages** on the tab to view the Analyzer Messages window (Figure 2-33), which displays any messages that occurred during the network analysis. If there are any errors in the analysis, click **Errors** to view the error messages in the window.



Note You can also select **Reports > Show Messages** to view the Analyzer Messages window.

Figure 2-33 Analyzer Messages Window

- Step 13** Click **OK** to close the Analyzer Messages window.
- Step 14** Click **Dock View to Bottom Area** to position the Optical Results tab below the Network tab. Click it again to return to the previous view.
- Step 15** Click **Undock View on Desktop** to detach the Optical Results tab and view it as a stand-alone window.

Step 16 Click **Dock View to Center Area** to return to the previous view.

2.5 Editing and Viewing Network Components

MetroPlanner allows you to edit and view the network components either before or after the analysis. Error messages that occur during the analysis often cannot be resolved until you edit one or more network components.

2.5.1 Editing Site Parameters

Editing the site parameters allows you to make changes to the current site configuration.

Step 1 Create or open a network design.

Step 2 Click **Edit** on the menu bar.

Step 3 Double-click a site in the main MetroPlanner window, or right-click a site and select **Edit Site** from the menu. The Site Dialog window ([Figure 2-19](#)) appears.

The window displays site, rack, shelf, slot, and card information, in addition to the site parameters, type, and amplifier information you selected when you created the site. The window is divided into three areas. The area on the far left contains the information you entered when you created the site. The middle area contains a button bar and expandable nodes that represent the site, racks, shelves, and additional equipment. The area at the far right contains a graphical representation of the site, racks, and shelves.

Step 4 Make any changes to the fields as described in the [“2.3.2.1 Adding Sites” section on page 2-19](#).

Step 5 To change the layout of the node graphic, right-click on the tree root site icon and select **Layout Customization**. A sub-menu opens, displaying the following customization options: AIC, Fibre Storage, and Patch Panels.

Step 6 Select the items you want to display on the node graphic. The node graphic updates in real-time to display the selected item.

Although there are two distinct patch panel options, the final network design only contains a single option that applies to both. The patch panel options are only available for Hub, Full OADM and Terminal site types. For Terminal types, only one patch panel is added/removed. For Hub and Full-OADM types, both patch panels are added/removed.



Note If you change the network design after the design has been analyzed, the changes are applied immediately to the site layout without having to re-analyze the network.

Step 7 Click **OK** to save the changes and close the window.

**Note**

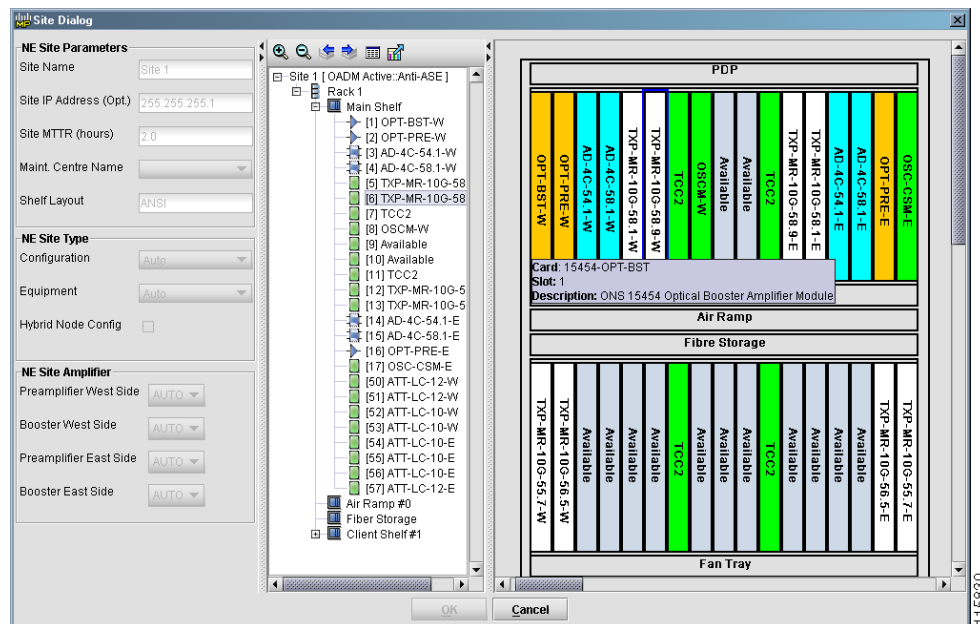
You can only make site changes before running the network analysis. If you need to make changes to a site that is a part of an analyzed network, click **Design Mode** on the menu bar to revert the network to the design mode, where you can edit the site. You must then run the Network Analyzer again to obtain a valid network configuration.

2.5.2 Displaying Shelf Configurations

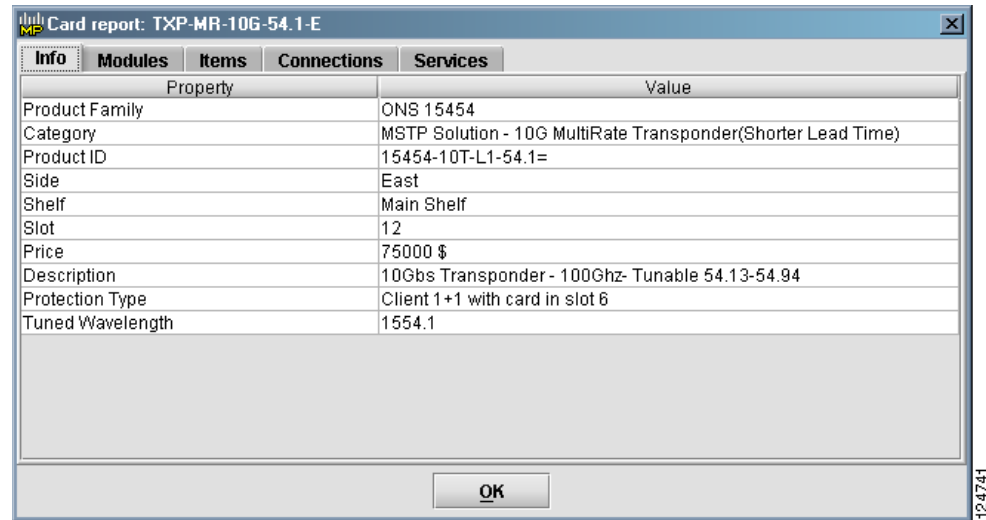
After analyzing the network design, you can examine the shelf configuration for each of the sites using the Edit Site dialog box.

- Step 1** Click **Edit** and double-click a site in the Network tab to display the Site Dialog window (Figure 2-34).

Figure 2-34 Site Dialog Window Showing Shelf Configuration



- Step 2** Double-click different areas of the graphic on the far right of the window to see information specific to that rack, shelf, or card. A separate window appears, displaying information for the selected item.

Figure 2-35 Sample Report Window

The information displayed in the window varies from item to item. See [Table 2-8](#) for a complete listing of the tabs and columns available in the window.

Table 2-8 Site Dialog Report Window Tabs and Columns

Tab	Column	Description
Info	Property	Displays the categories of information available for the selected item.
	Value	Displays the actual item description.
Modules	P/F	Displays the present and forecast module information.
	Module PID	Displays the module part number.
	Ch #	Displays the channel number.
	Description	Displays the description of the module.
Items	Item PID	Displays the item part number.
	Category	Displays the category to which the item belongs.
	Description	Displays a description of the item.
	Count	Indicates the number of these items present.
	Notes	Displays any notes available for the item.
Connections	Port	Displays the port name.
	Conn. Port	Displays the connection port name.
	Conn. Card	Displays the connection card name.
	Conn. Position	Displays the position of the connection.

Table 2-8 Site Dialog Report Window Tabs and Columns (continued)

Tab	Column	Description
Services	Service Filtering Option	Select a filtering option for the services. Choices are None, Only Added, Only Dropped, Only Express, and Only Optical Bypass.
	Service Label	Displays the service label.
	Src Site	Displays the source site name.
	Src Pos	Displays the source rack and shelf position.
	Src Unit	Displays the source card (unit) name.
	Src Port	Displays the source port.
	Dest Site	Displays the destination site name.
	Dest Pos	Displays the destination rack and shelf position.
	Dest Unit	Displays the destination card (unit) name.
	Dest Port	Displays the destination port.
	Cl. Service	Displays the client service type.
	Protection	Displays the current protection scheme.
	ITU Ch.	Displays the ITU channel.
	Op. Bypass	Displays the name of the optical bypass site.
	Cl. Interf.	Displays the DWDM interface type (transponder or line card).
	Cl. Card	Displays the DWDM card type.

- Step 3** Click **Zoom In** and **Zoom Out** on the button bar to view more or less detail on the graphic.
- Step 4** Click either the left or right arrow button to view information for the next or previous site in the network.
- Step 5** To view the site layout in table format, click **View Layout As Table**. The site information appears as a separate window in table format, allowing you to export to an external application, if you desire.
- Step 6** To export the layout to an image file, click **Export View To Image**.
- Step 7** To exit the shelf layout window, click **Cancel**.

2.5.3 Deleting a Site

Perform the following steps to delete an existing site from the network design.

- Step 1** Right-click the site in the main MetroPlanner window and select **Delete Site** from the menu. A confirmation message appears, asking you to confirm the deletion of the site.
- Step 2** Click **Yes** to delete the site.

**Note**

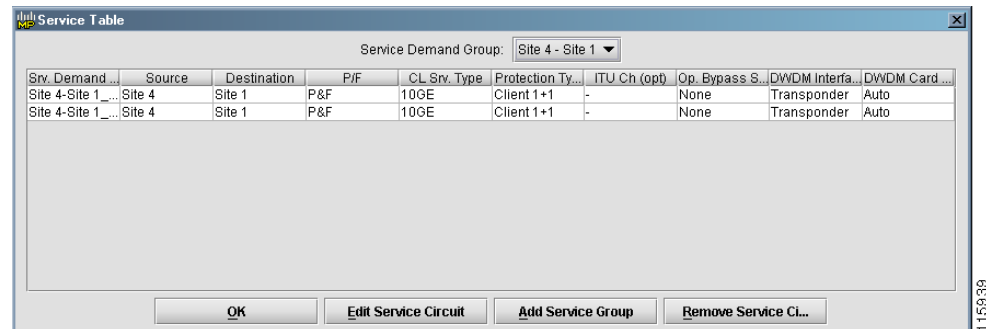
If the site has associated service demands or channels, you must first delete those demands or channels before deleting the site.

2.5.4 Editing Service Demand Allocations

You can change the distribution of services in a group of fixed or P-ring service demands as well as view the service requests between to sites using the following steps.

- Step 1** Create or open a network design.
- Step 2** Click **Edit Mode** on the menu bar.
- Step 3** Double-click a channel/service in the main MetroPlanner window, or right-click a service and select Edit Service from the menu. The Service Table window (Figure 2-36) appears.

Figure 2-36 Service Table Window



The Services Table window displays information about the selected service. Table 2-9 lists the fields and columns and their descriptions.

Table 2-9 Service Table Columns

Column/Field Label	Description
Srv. Demand Label	Displays the service demand label.
Source	Displays the name of the source node.
Destination	Displays the name of the destination node.
P/F	Present and Forecast. This column displays “P&F” if services are configured both currently and in the future. If services are for future only, “F” is displayed. If services are configured only for current activity, “P” is displayed.
CL Srv. Type	Displays the client service type.
Protection Type	Specifies the protection type, if any. You can force routing of service by selecting Unprotected-East or Unprotected-West from the drop-down list.

Table 2-9 Service Table Columns (continued)

Column/Field Label	Description
ITU Ch (opt)	Displays the ITU channel of the service demand. You can force the channel number by selecting a new channel from the drop-down list in the field.
Op. Bypass Site Name	Displays the name of the optical bypass site, if one is assigned.
DWDM Interface Type	Displays the DWDM interface type.
DWDM Card Type (opt)	Displays the DWDM card type.

- Step 4** To display the Service Demand Dialog window, double-click a row, or select a row and click **Edit Service Circuit**. The Service Demand Dialog window ([Figure 2-22](#)) appears, allowing you make changes to the service.



Note You can only make service changes before running the network analysis. If you need to make changes to a service that is a part of an analyzed network, click **Design Mode** on the menu bar to revert the network to the design mode, where you can edit the service. You must then run the Network Analyzer again to obtain a valid network configuration.

- Step 5** Make any changes to the fields as described in the “[2.3.2.3 Adding Services](#)” section on page 2-24.
- Step 6** To delete a service, select the service and click **Remove Service Circuit**.
- Step 7** To add a service group, click the **Add Service Group** button. The Service Demand Dialog window appears, allowing you to create a new service.
- Step 8** Click **OK** to save the changes and close the window.

2.5.5 Editing Fiber Span Parameters

Editing the fiber span parameters allows you make changes to fiber type, span length, and other fiber-related items.

- Step 1** Create or open a network design.
- Step 2** Click **Edit Mode** on the menu bar.
- Step 3** Double-click a fiber span in the main MetroPlanner window, or right-click the fiber span and select **Edit Fibre** from the menu. The Fibres Dialog window ([Figure 2-20](#)) appears, allowing you to make changes to the fiber span.



Note You can only make fiber changes before running the network analysis. If you need to make changes to a fiber that is a part of an analyzed network, click **Design Mode** on the menu bar to revert the network to the design mode, where you can edit the fiber. You must then run the Network Analyzer again to obtain a valid network configuration.

- Step 4** Make any changes to the fields as described in the “[2.3.2.2 Adding Fiber Spans](#)” section on page 2-22.
- Step 5** To save the changes, click **OK**.
-

2.5.6 Deleting a Fiber Span

Perform the following steps to delete a fiber span from the network design.

- Step 1** Right-click the fiber and select **Delete Fibre** from the menu. A confirmation dialog box appears, asking you to confirm the fiber deletion.
- Step 2** Click **Yes** to confirm the fiber deletion.
-

2.5.7 Viewing the Traffic Matrix

The Traffic Matrix window displays information about the external connections on the client side.



Note

When opened from the menu, the Traffic Matrix appears blank until after you run a query from the Traffic Matrix tab. See [Step 6](#) of “[2.4.2 Viewing the Optical Results Tab](#)” section on page 2-33 for information on running a query.

- Step 1** Create or open an analyzed network.
- Step 2** Select **Reports > Traffic Matrix**. The Traffic Matrix window appears ([Figure 2-37](#)). The query runs automatically, displaying information based on the selected item in the tree view. You can also view the traffic matrix for a specific demand by right-clicking the desired traffic demand in the tree view

Figure 2-37 Traffic Matrix Window

#	Traffic Group Label	Srv. Circuit Label	Source	Src. Side	Src. IP Address	Src. Position	Src. Unit
1	Fixed	Site 1-Site 2_1_1.1	Site 1	East	255.255.255.1	Rack #1.Main Shelf.13	15454-10T-L1-58.1
			Site 2	West	255.255.255.2	Rack #1.Main Shelf.03	15454-10T-L1-58.1
1		Site 1-Site 2_1_1.2	Site 2	East	255.255.255.2	Rack #1.Main Shelf.15	15454-10T-L1-58.1
			Site 1	West	255.255.255.1	Rack #1.Main Shelf.05	15454-10T-L1-58.1
2	Fixed	Site 1-Site 2_1_2.1	Site 1	East	255.255.255.1	Rack #1.Main Shelf.12	15454-10T-L1-58.1
			Site 2	West	255.255.255.2	Rack #1.Main Shelf.04	15454-10T-L1-58.1
2		Site 1-Site 2_1_2.2	Site 2	East	255.255.255.2	Rack #1.Main Shelf.14	15454-10T-L1-58.1
			Site 1	West	255.255.255.1	Rack #1.Main Shelf.06	15454-10T-L1-58.1
3	Fixed	Site 2-Site 3_1_1.1	Site 2	East	255.255.255.2	Rack #1.Main Shelf.13	15454-10T-L1-59.7
			Site 3	West	255.255.255.3	Rack #1.Main Shelf.04	15454-10T-L1-59.7
3		Site 2-Site 3_1_1.2	Site 3	East	255.255.255.3	Rack #1.Main Shelf.14	15454-10T-L1-59.7
			Site 2	West	255.255.255.2	Rack #1.Main Shelf.05	15454-10T-L1-59.7
4	Fixed	Site 2-Site 3_1_2.1	Site 2	East	255.255.255.2	Rack #1.Main Shelf.12	15454-10T-L1-59.7

Table 2-10 describes the information in the Traffic Matrix window.

Table 2-10 Traffic Matrix Columns

Column Name	Description
Traffic Group Label	Displays the traffic group name for ROADM and P-Ring traffic. Displays the predefined string "Fixed" for fixed traffic.
Srv. Circuit Label	Displays the service circuit label.
Source	Displays the source site name.
Src. Side	Displays the source side of the site (east or west).
Src. IP Address	Displays the IP address of the source site.
Src. Position	Displays the source rack and shelf position.
Src. Unit	Displays the source card (unit) name.
Src. Port	Displays the source port.
Destination	Displays the destination site name.
Dest. Side	Displays the destination side of the site (east or west).
Dest. IP Address	Displays the IP address of the destination site.
Dest. Position	Displays the destination rack and shelf position.
Dest. Unit	Displays the destination card (unit) name.
Dest. Port	Displays the destination port.
Cl. Service Type	Displays the client service type.
Protection Type	Displays the current protection scheme.

Table 2-10 Traffic Matrix Columns (continued)

Column Name	Description
Wavelength	Displays the wavelength.
Op. Bypass Site Name	Displays the name of the optical bypass site.
DWDM Interface Type	Displays the DWDM interface type (transponder or line card).
DWDM Card Type	Displays the DWDM card type (10G MR TXP w/FEC or 10G MR TXP w/o FEC).

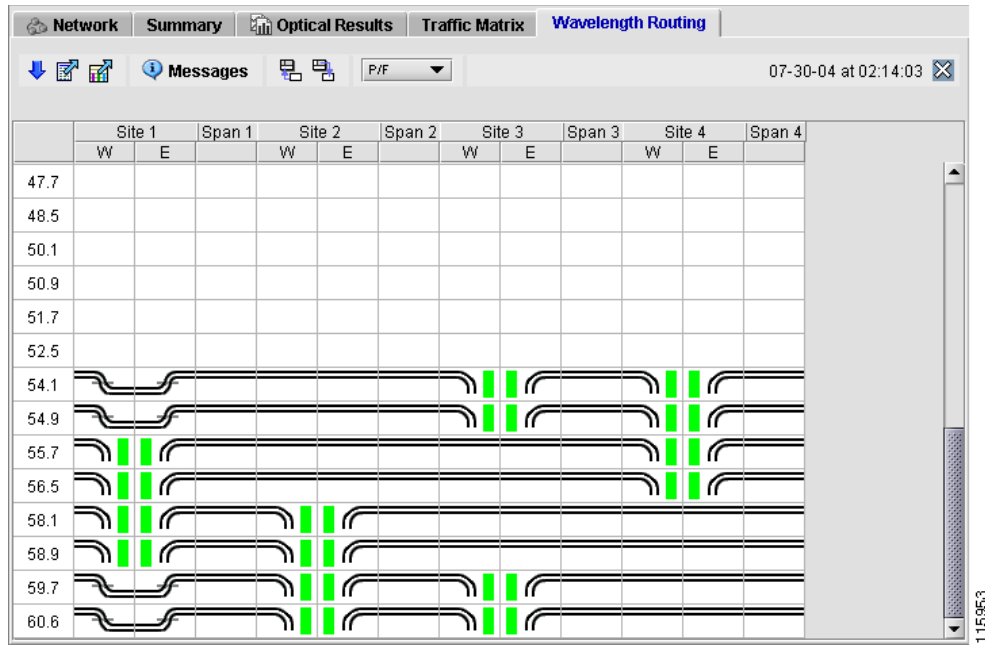
- Step 3** Click **Shrink Header** to hide the text that appears above the table rows.
- Step 4** Click **Export Report** to save the information to an external file. The Save Table window appears, allowing you to enter or select an HTML or text file name.
- Step 5** Click **Messages** to view the Analyzer Messages window ([Figure 2-33](#)).
- Step 6** Click **Dock View to Bottom Area** to position the tab below the Network tab. Click it again to return to the previous view.
- Step 7** Click **Undock View on Desktop** to detach the tab and view it as a stand-alone window.
- Step 8** Click **Dock View to Center Area** to return to the previous view.

2.5.8 Viewing the Wavelength Routing

The Wavelength Routing Map allows you to view a graphical traffic display of all the present and forecast, fixed and protected ring routed circuits in the network.

- Step 1** Create or open an analyzed network.
- Step 2** Select **Reports > Wavelength Routing** from the menu. Alternatively, you can open the Wavelength Routing window by clicking **View Reports** and selecting Wavelength Routing from the drop-down. The Wavelength Routing tab appears ([Figure 2-38](#)).

Figure 2-38 Wavelength Routing Tab



Each row represents a wavelength. The Wavelength Routing tab displays all the wavelengths, not just the wavelengths used by the network design. Each column represents the sites and each bidirectional span. The site columns are subdivided into two other columns, which represent the east and west side of the site.

Each bidirectional routed channel is represented by a line starting from the source site to the destination site through the sites and spans traversed by the channel. Protected circuits are represented by two distinct routes.

- Step 3** Place the cursor over the different sections of the map to display tool tip information about the routed circuits. The tool tips display the circuit label, service circuit type, protection type, and the DWDM card type.
- Step 4** Click **Shrink Header** to hide the text that appears above the table rows.
- Step 5** Click **Export Report** to save the information to an external file. The Save Table window appears, allowing you to enter or select an HTML or text file name.
- Step 6** Click **Export Report As Image** to save the information in the map to an external image file.
- Step 7** Click **Messages** to view the Analyzer Messages window (Figure 2-33).
- Step 8** Click **Dock View to Bottom Area** to position the tab below the Network tab. Click it again to return to the previous view.
- Step 9** Click **Undock View on Desktop** to detach the tab and view it as a stand-alone window.
- Step 10** Click **Dock View to Center Area** to return to the previous view.

2.5.9 Viewing the Link Availability

MetroPlanner provides the ability to view a link availability table listing an availability value (as a percentage) for each circuit in the network. MetroPlanner defines the value globally for the circuit, and factors in both paths for protected circuits. For BLSR/MSP-Ring-type ring protection, link availability is provided for each individual service circuit.

- Step 1** Create or open an analyzed network.
- Step 2** Select **Reports > Link Availability**. Alternatively, click **View Report** and select Link Availability from the list, or right-click an item in the tree view and select Link Availability.



Note Opening the Link Availability window via right-click displays all the circuits in the subtree in the window.

The Link Availability tab appears (Figure 2-39).

Figure 2-39 Link Availability Tab

#	Traffic Group Label	Service Circuit Label	P/F	DWDM Card Type	Protection Type	Cl. Service Type	Source	Destination	Link Availability % (Complete)
1	Fixed	Site 1-Site 2_1_1.2	P/F	10G MR TXP wFEC	Client 1+1	10GE	Site 1	Site 2	99.9999792698635
2	Fixed	Site 1-Site 2_1_2.2	P/F	10G MR TXP wFEC	Client 1+1	10GE	Site 1	Site 2	99.9999792698635
3	Fixed	Site 2-Site 3_1_1.2	P/F	10G MR TXP wFEC	Client 1+1	10GE	Site 2	Site 3	99.9999829992703
4	Fixed	Site 2-Site 3_1_2.2	P/F	10G MR TXP wFEC	Client 1+1	10GE	Site 2	Site 3	99.9999829992703
5	Fixed	Site 3-Site 4_1_1.2	P/F	10G MR TXP wFEC	Client 1+1	10GE	Site 3	Site 4	99.9999840435322
6	Fixed	Site 3-Site 4_1_2.2	P/F	10G MR TXP wFEC	Client 1+1	10GE	Site 3	Site 4	99.9999840435322
7	Fixed	Site 4-Site 1_1_1.2	P/F	10G MR TXP wFEC	Client 1+1	10GE	Site 4	Site 1	99.9999786798432
8	Fixed	Site 4-Site 1_1_2.2	P/F	10G MR TXP wFEC	Client 1+1	10GE	Site 4	Site 1	99.9999786798432

Table 2-11 describes the information in the Link Availability tab.

Table 2-11 Link Availability Tab Columns

Column Name	Description
Traffic Group Label	Displays the traffic group name for ROADM and P-Ring traffic. For fixed traffic, it displays the predefined string "Fixed".
Service Circuit Label	Displays the service circuit label.
Source	Displays the service circuit source site name.
Destination	Displays the service circuit destination site name.
Protection Type	Displays the service circuit protection type.

Table 2-11 Link Availability Tab Columns (continued)

Column Name	Description
DWDM Card Type	Displays the client DWDM card type.
Link Availability% Complete	Displays the link availability, in percentage complete.

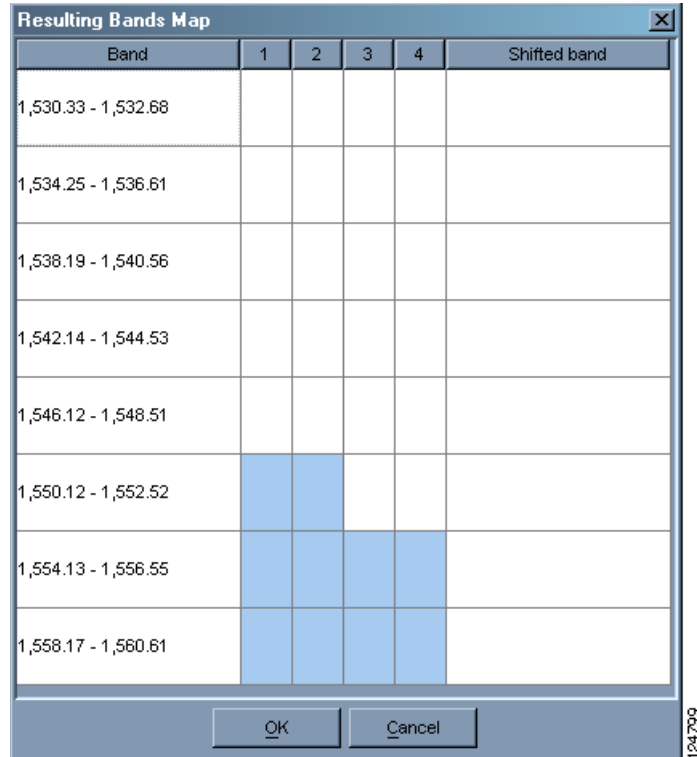
- Step 3** Click **Shrink Header** to hide the text that appears above the table rows.
- Step 4** Click **Export Report** to save the information to an external file. The Save Table window appears, allowing you to enter or select an HTML or text file name.
- Step 5** Click **Messages** to view the Analyzer Messages window ([Figure 2-33](#)).
- Step 6** Click **Dock View to Bottom Area** to position the tab below the Network tab. Click it again to return to the previous view.
- Step 7** Click **Undock View on Desktop** to detach the tab and view it as a stand-alone window.
- Step 8** Click **Dock View to Center Area** to return to the previous view.

2.5.10 Modifying the Filter Wavelengths

After analyzing the network, you can force channels to any one of the wavelength bands supported by the ONS 15454.

- Step 1** Create or open an analyzed network.
- Step 2** Choose **Network > Bands Shifting** from the menu bar. The Resulting Bands Map window will display ([Figure 2-40](#)).

Figure 2-40 Resulting Bands Map Window



Band	1	2	3	4	Shifted band
1,530.33 - 1,532.68					
1,534.25 - 1,536.61					
1,538.19 - 1,540.56					
1,542.14 - 1,544.53					
1,546.12 - 1,548.51					
1,550.12 - 1,552.52					
1,554.13 - 1,556.55					
1,558.17 - 1,560.61					

124799

The Resulting Bands Map window shows which wavelengths are in use in which bands. A used wavelength is indicated by light blue shading in the cell.

- Step 3** To switch the wavelengths to any available band, click on the drop down list in the Shifted Band column to the right of the wavelength.
- Step 4** Select a wavelength from the drop-down list. The new wavelength then appears in the Shifted Band column.



Note The drop-down list only appears after you click in the cell.

- Step 5** After switching bands, click **OK** to close the window, or click **Cancel** to close the window without saving any changes.

2.5.11 Viewing the Sites Table

The Sites Table displays a list of the sites in the network and their IP addresses.

- Step 1** Create or open a network design.
- Step 2** Select **Network > Sites Table**. The Sites Table appears (Figure 2-41).

Figure 2-41 Sites Table

Site name	IP address
Site 1	255.255.255.1
Site 2	255.255.255.2
Site 3	255.255.255.3
Site 4	255.255.255.4

- Step 3** To copy the information in the window, right-click any row and select **Copy Table**.
- Step 4** To export the information to an external file, right-click any row and select **Export Table**. A Save Table window appears, allowing you to enter or select a file name for the exported information. You can save site table files as either HTML or text files.
- Step 5** Click **Save**.
- Step 6** Click **OK** or **Cancel** to close the Sites Table window.

2.5.12 Viewing the Span Table

The Span table displays a list of the spans in the network.

- Step 1** Create or open a network design.
- Step 2** Select **Network > Span Table**. The Fibres Dialog window appears ([Figure 2-20](#)).
- Step 3** Click **OK** to close the window.

2.5.13 Arranging Sites in the Network View

After creating a network, you can use MetroPlanner to automatically arrange the sites into several configurations. MetroPlanner offers six different configurations.

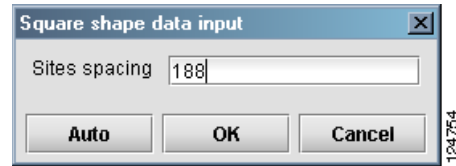
2.5.13.1 Using the Square Configuration

The square configuration displays the network in a square format.

- Step 1** Create or open a network design.

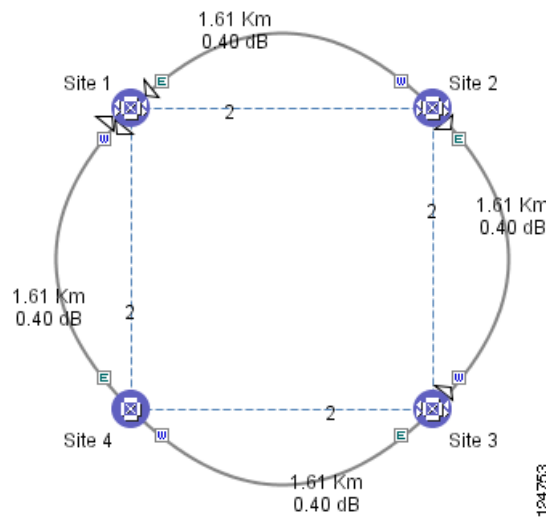
- Step 2** Select **Network > Arrange Sites > Square**. The Square Shape Data Input window appears (Figure 2-42).

Figure 2-42 Square Shape Data Input Window



- Step 3** Enter a number indicating the amount of space to place between the sites in the Sites Spacing field. Higher numbers create larger spaces between sites.
- Alternatively, click **Auto** to allow MetroPlanner to automatically place the sites at a predetermined distance from each other.
- Step 4** Click **OK** to create the spacing, or click **Cancel** to close the window without applying the square configuration. Refer to Figure 2-43.

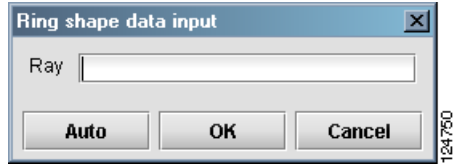
Figure 2-43 Example of a Square Configuration



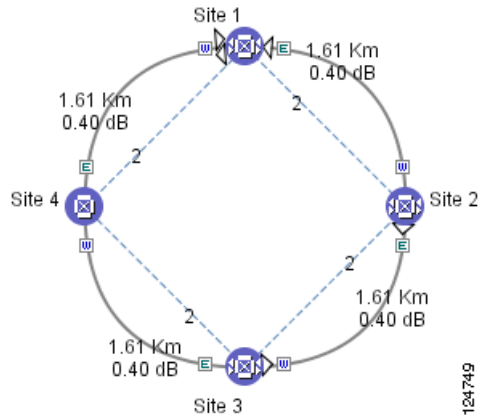
2.5.13.2 Using the Ring Configuration

The ring configuration displays the network in a circular, or ring format.

- Step 1** Create or open a network design.
- Step 2** Select **Network > Arrange Sites > Ring**. The Ring Shape Data Input window appears (Figure 2-44).

Figure 2-44 Ring Shape Data Input Window

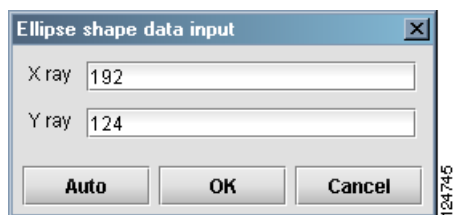
- Step 3** Enter a number indicating the radius of the ring in the Ray field. A higher numbers creates a larger ring. Alternatively, click **Auto** to allow MetroPlanner to automatically create a ring at a predetermined size.
- Step 4** Click **OK** to create the ring, or click **Cancel** to close the window without applying the ring configuration. Refer to [Figure 2-45](#).

Figure 2-45 Ring Configuration Example

2.5.13.3 Using the Ellipse Configuration

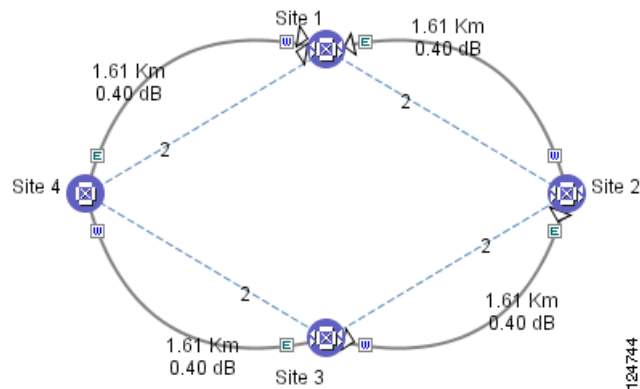
The ellipse configuration displays the network in a oval, or ellipse format.

- Step 1** Create or open a network design.
- Step 2** Select **Network > Arrange Sites > Ellipse**. The Ellipse Shape Data Input window appears ([Figure 2-46](#)).

Figure 2-46 Ellipse Shape Data Input Window

- Step 3** Enter a number indicating the length of the ellipse in the X Ray field. Higher numbers create longer ellipses.
- Step 4** Enter a number indicating the height of the ellipse in the Y Ray field. Higher numbers create wider ellipses.
- Alternatively, click **Auto** to allow MetroPlanner to automatically create an ellipse of a predetermined size.
- Step 5** Click **OK** to create the spacing, or click **Cancel** to close the window without applying the ellipse configuration. Refer to [Figure 2-47](#).

Figure 2-47 Ellipse Configuration Example

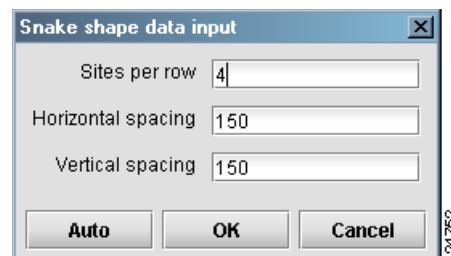


2.5.13.4 Using the Snake Configuration

The snake configuration displays the network in a serpentine, linear format.

- Step 1** Create or open a network design.
- Step 2** Select **Network > Arrange Sites > Snake**. The Snake Shape Data Input window appears ([Figure 2-48](#)).

Figure 2-48 Snake Shape Data Input Window



- Step 3** Enter a number indicating the number of sites to appear in each row in the Sites Per Row field.
- Step 4** Enter a number indicating the amount of space required between each site in the Horizontal Spacing field. Higher numbers create wider spaces between sites.

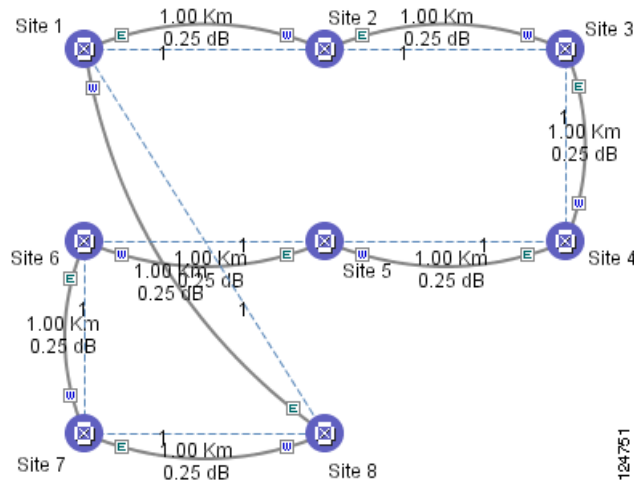
2.5.13 Arranging Sites in the Network View

Step 5 Enter a number indicating the amount of space required between each row in the Vertical Spacing field. Higher numbers create wider spaces between rows.

Alternatively, click **Auto** to allow MetroPlanner to automatically create a snake configuration of a predetermined layout.

Step 6 Click **OK** to create the spacing, or click **Cancel** to close the window without applying the snake configuration. Refer to [Figure 2-49](#).

Figure 2-49 Snake Configuration Example



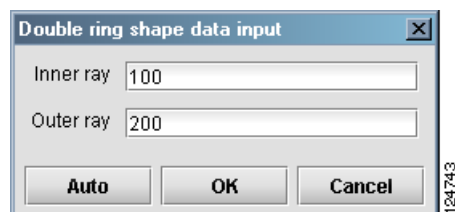
2.5.13.5 Using the Double Ring Configuration

The double ring configuration displays the network in a dual ring format.

Step 1 Create or open a network design.

Step 2 Select **Network > Arrange Sites > Double Ring**. The Double Ring Shape Data Input window appears ([Figure 2-50](#)).

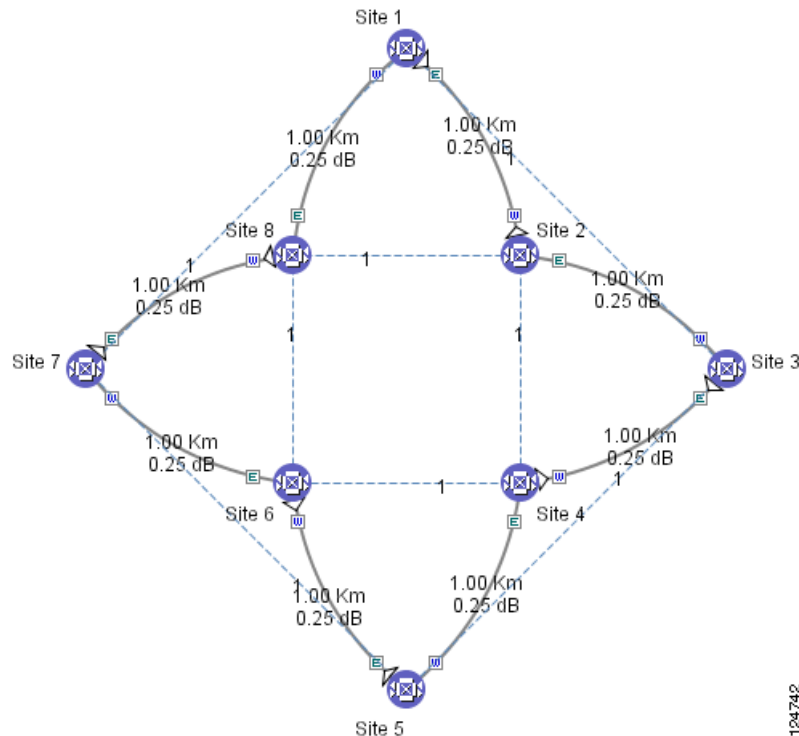
Figure 2-50 Double Ring Shape Data Input Window



Step 3 Enter a number indicating the radius of the inner ring in the Inner Ray field. Higher numbers create bigger rings.

- Step 4** Enter a number indicating the radius of the outer ring in the Outer Ray field. Higher numbers create bigger rings.
- Alternatively, click Auto to allow MetroPlanner to automatically create a double ring configuration of a predetermined size.
- Step 5** Click **OK** to create the spacing, or click **Cancel** to close the window without applying the double ring configuration. Refer to [Figure 2-51](#).

Figure 2-51 Double Ring Configuration Example



2.5.13.6 Using the Fit to Window Configuration

Use the Fit to Window configuration to adjust any existing configuration so that it fills the MetroPlanner window.

- Step 1** Create or open a network design.
- Step 2** Select **Network > Arrange Sites > Fit to Window**. The configuration expands or contracts to fit within the MetroPlanner window.

2.6 Saving and Loading Network Designs

MetroPlanner provides the capability to save network designs for future reference.

-
- Step 1** To save a network design to disk, click **Save**. If the design has not yet been saved to a file, a File dialog box appears, asking you to select a file path and specify a file name. MetroPlanner saves network designs with the extension “cmn”.
- Step 2** To load a network design from disk, click **Open**. The Select Network File dialog box appears, asking you to select a file path and specify a file name.



Note Network designs that were created in releases of MetroPlanner prior to Release 2.3 are incompatible with MetroPlanner R2.5.

- Step 3** To save the existing design with a new name, choose **File > Save As**. A File dialog box appears, asking you to select a file path and specify a file name.
-

2.7 Completing the Network Design

After creating, analyzing, and modifying the network design, you must prepare the design for installation at a customer site.

2.7.1 Freezing and Unfreezing the Network Layout

When the network design is in Install status, you can freeze and unfreeze the network layout, or the individual sites in the layout. Freezing a site forces the presence or absence of all preamplifiers, boosters, add/drop filters, and DCU units required by the site/network as a result of running the Network Analyzer previously.

The Install status refers to the current state of the network design. Network designs have several states, as follows.

- **Design**—The initial status for any new network design. You can add, delete, or change any aspect of the network design.
- **Design-Analyzed**—The status of the network design after you run the Network Analyzer. All the result tables are available and updated. You cannot change any aspect of the network design. You can also modify BOM aspects, such as global discounts and spare part management.
- **Install**—The status of the network after clicking **Install Mode**. Moving into the Install state from the Design-Analyzed state automatically freezes all the sites in the design. You cannot modify any aspect of the network design except the span parameters and (on unfrozen sites) amplifier forcing. You can modify the BOM. All routed circuits are fixed, and cannot be changed while in this state.
- **Installed-Analyzed**—The status of the network after running the Network Analyzer on a network in the Install state. MetroPlanner updates the results tables. You cannot modify any aspect of the network design except the span parameters and the amplifier forcing. All routed circuits are fixed, and cannot be changed while in this state.

MetroPlanner saves the state of the network along with the network itself.

-
- Step 1** Create or open a network design.
- Step 2** Click **Install Mode** to move the design into the Install state. All the sites in the network automatically freeze. Frozen sites are indicated by a closed padlock on the site (Figure 2-52).

Figure 2-52 Frozen Site Example



- Step 3** To unfreeze all the sites in the network, select **Network > Install > Layout Unfreezing**. The padlock disappears.
- Step 4** To unfreeze an individual site, right-click the frozen site and select **Network > Install > Site Layout Un-Freezing**.
- Step 5** To freeze the entire network, select **Network > Install > Layout Freezing**.
-

2.7.2 Viewing Internal Connections

You can view the network internal connections after the network has been analyzed, and when it is in the Install state. You can also view the patch cord connections between transponders and Y-Cable Protection FlexLayer modules. The Y-Cable Protection FlexLayer position is defined using the rack and shelf number resulting from the layout position, and the slots are numbered from left to right on each of the four FlexLayer modules that can be placed in a shelf.

-
- Step 1** Create or open a network design.
- Step 2** Analyze the network.
- Step 3** Select **Reports > Internal Connections** from the menu. The Internal Connections tab appears (Figure 2-53).

2.7.2 Viewing Internal Connections

Figure 2-53 Internal Connections Tab

Site	IP Address	Position-1	Unit-1	Port #-1	Port ID-1	Port Label-1	Attenuator
Site 1	255.255.255.1	Rack #1, Main Shelf.03	15454-AD-4C-54.1	1	CHAN-3-1-RX	1554.1-RX	
Site 1	255.255.255.1	Rack #1, Main Shelf.03	15454-AD-4C-54.1	2	CHAN-3-1-TX	1554.1-TX	
Site 1	255.255.255.1	Rack #1, Main Shelf.03	15454-AD-4C-54.1	3	CHAN-3-2-RX	1554.9-RX	
Site 1	255.255.255.1	Rack #1, Main Shelf.03	15454-AD-4C-54.1	4	CHAN-3-2-TX	1554.9-TX	
Site 1	255.255.255.1	Rack #1, Main Shelf.14	15454-AD-4C-54.1	5	CHAN-14-3-RX	1555.7-RX	
Site 1	255.255.255.1	Rack #1, Main Shelf.03	15454-AD-4C-54.1	5	CHAN-3-3-RX	1555.7-RX	
Site 1	255.255.255.1	Rack #1, Main Shelf.14	15454-AD-4C-54.1	7	CHAN-14-4-RX	1556.5-RX	
Site 1	255.255.255.1	Rack #1, Main Shelf.03	15454-AD-4C-54.1	7	CHAN-3-4-RX	1556.5-RX	
Site 1	255.255.255.1	Rack #1, Main Shelf.15	15454-AD-4C-58.1	1	CHAN-15-1-RX	1558.1-RX	
Site 1	255.255.255.1	Rack #1, Main Shelf.04	15454-AD-4C-58.1	1	CHAN-4-1-RX	1558.1-RX	
Site 1	255.255.255.1	Rack #1, Main Shelf.15	15454-AD-4C-58.1	3	CHAN-15-2-RX	1558.9-RX	
Site 1	255.255.255.1	Rack #1, Main Shelf.04	15454-AD-4C-58.1	3	CHAN-4-2-RX	1558.9-RX	
Site 1	255.255.255.1	Rack #1, Main Shelf.04	15454-AD-4C-58.1	5	CHAN-4-3-RX	1559.7-RX	
Site 1	255.255.255.1	Rack #1, Main Shelf.04	15454-AD-4C-58.1	6	CHAN-4-3-TX	1559.7-TX	
Site 1	255.255.255.1	Rack #1, Main Shelf.04	15454-AD-4C-58.1	7	CHAN-4-4-RX	1560.6-RX	
Site 1	255.255.255.1	Rack #1, Main Shelf.04	15454-AD-4C-58.1	8	CHAN-4-4-TX	1560.6-TX	
Site 1	255.255.255.1	Rack #1, Main Shelf.01	15454-OPT-BST	1	LINE-1-1-RX	COM-RX	
Site 1	255.255.255.1	Rack #1, Main Shelf.17	15454-OSC-CSM	1	LINE-17-1-RX	COM-RX	
Site 1	255.255.255.1	Rack #1, Main Shelf.02	15454-OPT-PRE	1	LINE-2-1-RX	COM-RX	
Site 1	255.255.255.1	Rack #1, Main Shelf.16	15454-OPT-PRE	2	LINE-16-1-TX	COM-TX	
Site 1	255.255.255.1	Rack #1, Main Shelf.17	15454-OSC-CSM	2	LINE-17-1-TX	COM-TX	

Table 2-12 lists the columns in the Internal Connections tab and their descriptions. Click on the columns to sort the table information by the selected column.

Table 2-12 Internal Connections Tab Columns

Column Name	Description
Site	Displays the name of the site.
IP Address	Displays the site IP address.
Position-1	Displays the rack, shelf, and slot position of the unit (card) from which the patch cord originates.
Unit-1	Displays the name of the unit (card).
Port #-1	Displays the port number from which the patch cord originates.
Port ID-1	Displays the port ID.
Port Label-1	Displays the name of the port.
Attenuator	When indicated, it is the PID of the bulk attenuator to be equipped on this connection. It also reports information for when an internal attenuator must be placed, between the DC-TX and DC-RX ports on the preamplifier when no DCU is equipped.
Position-2	Displays the rack, shelf, and slot position of the unit (card) where the patch cord terminates.
Unit-2	Displays the name of the unit (card).
Port #-2	Displays the port number where the patch cord terminates.
Port ID-2	Displays the port ID.
Port Label-2	Displays the name of the port.

Table 2-12 Internal Connections Tab Columns (continued)

Column Name	Description
Manually Set	<p>Defines when the internal connection must be manually set by means of the local craft terminal (CTC). The allowed values are:</p> <ul style="list-style-type: none"> No—This connection is automatically set on the site by the TL1 agent software. Yes—This connection must be manually set using CTC (or TL1). Remove—This connection must be manually removed using CTC (or TL1). <p>Note Every connection listed in the report must be connected with patch cords, except for connections marked “Remove”.</p>
P/F	Displays whether the connection relates to a present or forecast circuit.

- Step 4** Click **Shrink Header** to hide the text that appears above the table rows.
- Step 5** Click **Export Report** to save the information to an external file. The Save Table window appears, allowing you to enter or select an HTML or text file name.
- Step 6** Click **Messages** to view the Analyzer Messages window (Figure 2-33).
- Step 7** Click **Dock View to Bottom Area** to position the tab below the Network tab. Click it again to return to the previous view.
- Step 8** Click **Undock View on Desktop** to detach the tab and view it as a stand-alone window.
- Step 9** Click **Dock View to Center Area** to return to the previous view.

2.7.3 Viewing Installation Parameters

You can view the installation parameters of networks after the network has been analyzed, and when it is in the Install state. The network installation parameters report the parameter values to be set (provisioned) at installation time on each site in the network.

- Step 1** Create or open a network design.
- Step 2** Click **Install Mode** to move the design into the Install state.
- Step 3** Select **Reports > Installation Parameters** from the menu. The Installation Parameters tab appears (Figure 2-54).

2.7.3 Viewing Installation Parameters

Figure 2-54 Installation Parameters Tab

Site Name	IP Address	Side	Position	Unit	Port #	Port ID	Port Label	Parameter	Value	Measurement Unit
Site 1	255.255.255.1	East						SYSTEM_TYPE	0	string
Site 1	255.255.255.1	East						Channel Power Fail Low	-12.4	dBm
Site 1	255.255.255.1	East						OSC Power Fail Low	-11.9	dBm
Site 1	255.255.255.1	East						Pin OADM Stage	2.0	dBm
Site 1	255.255.255.1	East						Pout OADM Stage	-9.7	dBm
Site 1	255.255.255.1	East						Pout Band 54.1	-0.2	dBm
Site 1	255.255.255.1	East						Pout Band 58.1	0.0	dBm
Site 1	255.255.255.1	East						Power Fail Low [PRE Input]	-13.4	dBm
Site 1	255.255.255.1	West						SYSTEM_TYPE	0	string
Site 1	255.255.255.1	West						Channel Power Fail Low	-12.4	dBm
Site 1	255.255.255.1	West						OSC Power Fail Low	-11.9	dBm
Site 1	255.255.255.1	West						Pin OADM Stage	2.0	dBm
Site 1	255.255.255.1	West						Pout OADM Stage	-10.0	dBm
Site 1	255.255.255.1	West						Pout Band 54.1	0.2	dBm
Site 1	255.255.255.1	West						Pout Band 58.1	-0.3	dBm
Site 1	255.255.255.1	West						Power Fail Low [PRE Input]	-13.4	dBm
Site 2	255.255.255.2	East						SYSTEM_TYPE	0	string
Site 2	255.255.255.2	East						Channel Power Fail Low	-4.6	dBm
Site 2	255.255.255.2	East						OSC Power Fail Low	-11.7	dBm
Site 2	255.255.255.2	East						Pin OADM Stage	0.4	dBm
Site 2	255.255.255.2	East						Pout OADM Stage	-3.8	dBm
Site 2	255.255.255.2	East						Pout Band 58.1	-15.7	dBm
Site 2	255.255.255.2	West						SYSTEM_TYPE	0	string
Site 2	255.255.255.2	West						Channel Power Fail Low	-4.2	dBm

Table 2-13 lists the columns in the Installation Parameters tab and their descriptions.

Table 2-13 Installation Parameters Tab Columns

Column Name	Description
Site Name	Displays the name of the site.
IP Address	Displays the site IP address.
Side	Indicates the side of the site from which the parameter originates (east or west).
Position	Displays the rack, shelf, and slot position of the unit (card) from which the parameter originates.
Unit	Displays the name of the unit (card).
Port #	Displays the port number (IDL port identifier) of the parameter.
Port ID	Displays the port ID (TL1 identifier).
Port Label	Displays the name of the port as displayed on the front panel of the unit.
Parameter	Displays the name of the parameter.
Value	Displays the value to be set for the installation parameter.

Table 2-13 Installation Parameters Tab Columns (continued)

Column Name	Description
Measurement Unit	Displays the unit of measure for the parameter.
Manual Set	Defines when the installation parameter must be manually set by means of the local craft terminal (CTC). The allowed values are: <ul style="list-style-type: none"> No—This parameter is automatically set on the site using the assisted configuration file. Yes—This parameter must be manually set using CTC (or TL1). Troubleshooting—This parameters is used to check if the measured value in the specified point is the expected value.

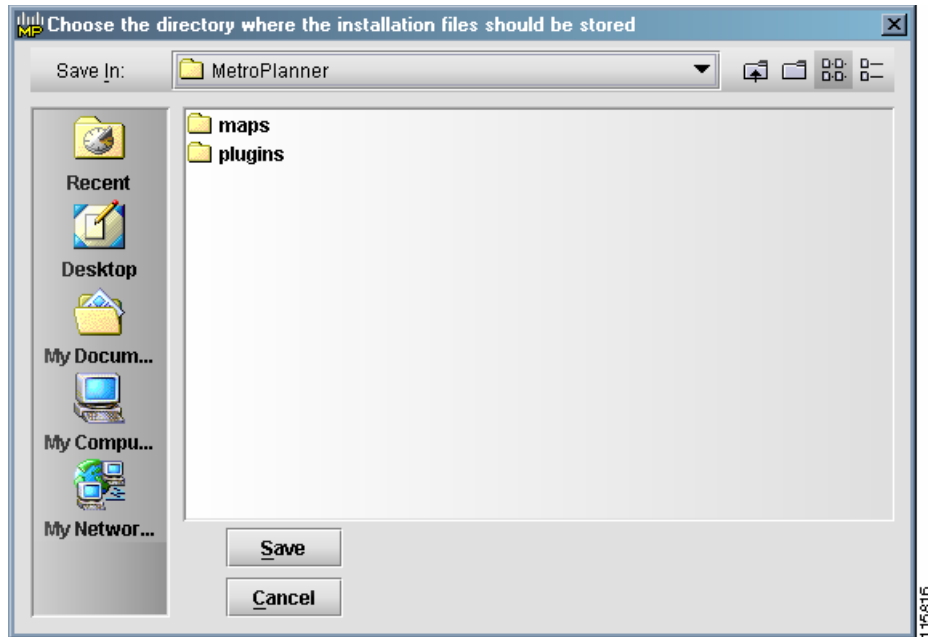
The installation parameters vary, depending on whether they apply to the network, system, or site.

- Step 4** Click **Shrink Header** to hide the text that appears above the table rows.
- Step 5** Click **Export Report** to save the information to an external file. The Save Table window appears, allowing you to enter or select an HTML or text file name.
- Step 6** Click **Messages** to view the Analyzer Messages window ([Figure 2-33](#)).
- Step 7** Click **Dock View to Bottom Area** to position the tab below the Network tab. Click it again to return to the previous view.
- Step 8** Click **Undock View on Desktop** to detach the tab and view it as a stand-alone window.
- Step 9** Click **Dock View to Center Area** to return to the previous view.

2.7.4 Saving the Installation Assisted Configuration File

After MetroPlanner calculates the installation parameters, it can create a separated ASCII configuration file for each site in the network. This file can be directly imported to a site using the NE Update feature in Cisco Transport Controller (CTC). MetroPlanner generates one text file for each site in the network in the MetroPlanner installation folder. Each file is named with the site name string by default.

- Step 1** Create or open a network design.
- Step 2** Click **Install Mode** to move the design into the Install state.
- Step 3** Select **Network > Install > Assisted Conf Setup**. The Assisted Configuration Setup Save File window appears ([Figure 2-55](#)).

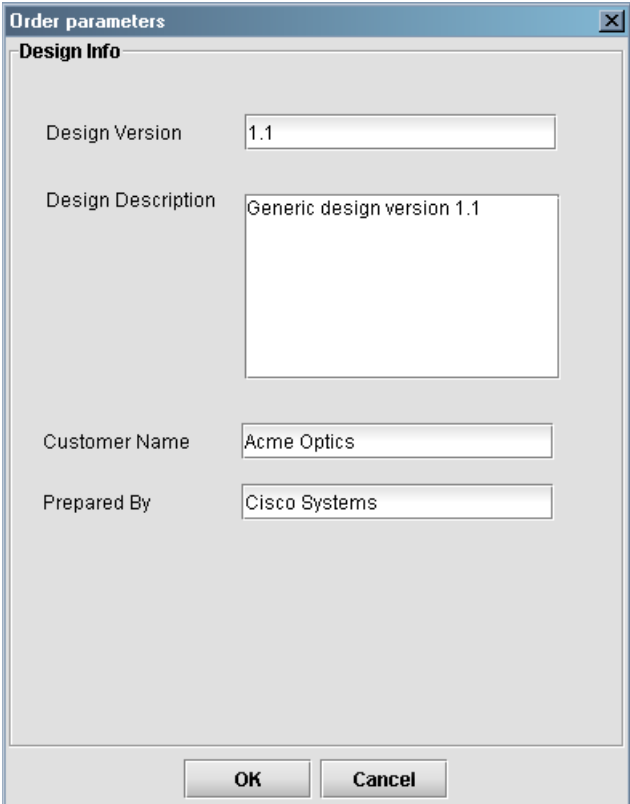
Figure 2-55 Assisted Configuration Setup Save File Window

- Step 4** Click **Save** to save the file to disk.
- Step 5** To change the directory, choose a new directory from the list, or use the drop-down list to select a directory.
- Step 6** Click **Cancel** to close the window without saving a configuration setup file.

2.8 Ordering the Equipment

MetroPlanner provides features to help you order your Cisco ONS 15454 DWDM equipment. After you complete the network design, you must create a unique order code (also referred to as an order description). This allows the order to be placed via Cisco.com. The following steps describe the process for creating an order code.

- Step 1** Choose **Options > Order Parameters**. The Order Parameters window appears ([Figure 2-56](#)).

Figure 2-56 Order Parameters Window

The image shows a software window titled "Order parameters" with a close button (X) in the top right corner. Inside the window, there is a tab labeled "Design Info". Below the tab, there are four input fields: "Design Version" with the value "1.1", "Design Description" with the value "Generic design version 1.1", "Customer Name" with the value "Acme Optics", and "Prepared By" with the value "Cisco Systems". At the bottom of the window, there are two buttons: "OK" and "Cancel". A small vertical text "115917" is visible on the right side of the window.

- Step 2** Enter the version of the design in the Design Version field.
- Step 3** Enter the description in the Design Description field.
- Step 4** Enter the name of the customer in the Customer Name field.
- Step 5** Enter the name of the designer in the Prepared By field.
- Step 6** Click **OK**. Click **Cancel** to close the window without saving any changes.

2.9 Generating a BOM

You can generate a BOM after you have successfully analyzed your network design.

2.9.1 Generating a Network BOM

Use the following steps to generate a BOM for the network.

2.9.1 Generating a Network BOM

- Step 1** Choose **Reports > Network Bill Of Material** to generate a BOM for the entire network. The Network BOM window (Figure 2-57) appears.

Figure 2-57 Network BOM Window

Product ID	Description	Quantity	Unit Price	Network Unit Discount	Total Price	Discounted Total Price
15454-AIR-RAMP=	ONS 15454 Air Ramp / Baffle for th...	4	\$120.00	0 %	\$480.00	\$480.00
15454-FBR-STRG=	Fiber Storage Shelf	4	\$800.00	0 %	\$3,200.00	\$3,200.00
15454-SA-HD=	15454 SA NEBS3 ANSI wRCA an...	6	\$2,700.00	0 %	\$16,200.00	\$16,200.00
15454-BLANK	Empty slot Filler Panel	33	\$225.00	0 %	\$7,425.00	\$7,425.00
15454-TCC2	Timing Communications Control ...	12	\$4,500.00	0 %	\$54,000.00	\$54,000.00
15454-FTA3-T	Shelf Fan Tray Assembly,ANSI,15...	6	\$720.00	0 %	\$4,320.00	\$4,320.00
15454-MSTP-4.7SW=	Rel. 4.7.0 MSTP Feature Pkg., CD...	6	\$1,995.00	0 %	\$11,970.00	\$11,970.00
SF15454-MSTP-4.7	Rel. 4.7.0 SW, MSTP, Pre-loaded ...	12	\$0.00	0 %	\$0.00	\$0.00
15454-OSCM=	ONS 15454 Optical Service Chann...	3	\$7,000.00	0 %	\$21,000.00	\$21,000.00
15454-OSC-CSM=	ONS 15454 Combiner and Separ...	5	\$9,000.00	0 %	\$45,000.00	\$45,000.00
15454-OPT-PRE=	ONS 15454 Optical Pre-Amplifier ...	2	\$40,000.00	0 %	\$80,000.00	\$80,000.00
15454-OPT-BST=	ONS 15454 Optical Booster Amplif...	3	\$40,000.00	0 %	\$120,000.00	\$120,000.00
15454-AD-2C-54.1=	ONS 15454 OADM - 2 Chs - 100G...	2	\$30,000.00	0 %	\$60,000.00	\$60,000.00
15454-AD-2C-59.7=	ONS 15454 OADM - 2 Chs - 100G...	2	\$30,000.00	0 %	\$60,000.00	\$60,000.00
15454-AD-4C-54.1=	ONS 15454 OADM - 4 Chs - 100G...	4	\$40,000.00	0 %	\$160,000.00	\$160,000.00
15454-AD-4C-58.1=	ONS 15454 OADM - 4 Chs - 100G...	4	\$40,000.00	0 %	\$160,000.00	\$160,000.00
15454-10T-L1-54.1=	10Gbs Transponder - 100Ghz- Tu...	8	\$75,000.00	0 %	\$600,000.00	\$600,000.00
15454-10T-L1-55.7=	10Gbs Transponder - 100Ghz- Tu...	8	\$75,000.00	0 %	\$600,000.00	\$600,000.00
15454-10T-L1-58.1=	10Gbs Transponder - 100Ghz- Tu...	8	\$75,000.00	0 %	\$600,000.00	\$600,000.00

- Step 2** To change the global discount for the entire network, enter a new global discount in the form of a percentage in the Global Discount Percentage field. The field shows the percentage from the Global Discount Percentage option in the Default Project Options window. The global discount is applied to all components in the BOM.
- Step 3** To change the global discount percentage for an individual network component, click the Network Unit Discount cell of the component you wish to change, and enter a new discount percentage. Table 2-14 describes the columns.

Table 2-14 BOM Window Columns

Column Label	Description
Shelf ID	Displays the ID string of the shelf (for site BOMs only).
Product ID	Displays the ID string of the product.
Description	Displays a description of the product.
Quantity	Displays the number of specific products in the BOM.
Unit Price	Displays the price per unit.
Network/Site Unit Discount	Displays the per unit discount amount that you assigned in the Global Discount Percentage field. If you leave the field blank, the discount amount is zero.
Total Price	Displays the total price of the products before applying the discount.
Discounted Total Price	Displays the total price of the products after applying the discount.
Site	Displays the number of products to be assigned to a particular site. The number of Site columns is the same as the number of sites in the network.

2.9.2 Generating a Site BOM

Use the following steps to generate a BOM for a site.

-
- Step 1** Right-click on a site and select **Generate Site BOM**. The Site BOM window ([Figure 2-58](#)) appears.

Figure 2-58 Site BOM Window

Shelf ID	Product ID	Quantity	Unit Price	Site Unit Discount	Discounted Total Price
Main Shelf items	SF15454-MSTP-4.7	2	\$0.00	0 %	\$0.00
	15454-MSTP-4.7SW=	1	\$1,995.00	0 %	\$1,995.00
	15454-LC-LC-2=	8	\$90.00	0 %	\$720.00
Main Shelf	15454-SA-HD=	1	\$2,700.00	0 %	\$2,700.00
	15454-LC-LC-2=	2	\$90.00	0 %	\$180.00
	15454-LC-LC-2=	2	\$90.00	0 %	\$180.00
	15454-LC-LC-2=	2	\$90.00	0 %	\$180.00
	15454-LC-LC-2=	2	\$90.00	0 %	\$180.00
	15454-TCC2	2	\$4,500.00	0 %	\$9,000.00
	15454-FTA3-T	1	\$720.00	0 %	\$720.00
	15216-ATT-LC-12=	3	\$200.00	0 %	\$600.00
	15216-ATT-LC-10=	5	\$200.00	0 %	\$1,000.00
	15454-OPT-PRE=	2	\$40,000.00	0 %	\$80,000.00
	15454-OSC-CSM=	1	\$9,000.00	0 %	\$9,000.00
	15454-OPT-BST=	1	\$40,000.00	0 %	\$40,000.00
	15454-OSC=	1	\$7,000.00	0 %	\$7,000.00
	15454-AD-4C-54.1=	2	\$40,000.00	0 %	\$80,000.00
	15454-AD-4C-58.1=	2	\$40,000.00	0 %	\$80,000.00

- Step 2** To change the discount percentage for a site component, click the Site Unit Discount cell of the component you wish to change, and enter a new discount percentage.

Table 2-14 describes the columns.

2.9.3 Exporting a BOM

MetroPlanner allows you to export the BOM to an external file (such as an HTML or text file).

- Step 1** Click **Export**. The Save Table dialog box appears.
- Step 2** Navigate to the destination folder and select or type the file name. MetroPlanner creates an HTML or text file containing the BOM.
- Step 3** Click **Save**. To cancel saving the BOM, click **Cancel**.

2.9.4 Importing a BOM to an Excel Spreadsheet

You can import a BOM that has been exported to a text file into a Microsoft Excel spreadsheet. For information about creating BOM text files, see the “2.9.3 Exporting a BOM” section.

- Step 1** Launch the Microsoft Excel application.
- Step 2** Select **File > Open**.

- Step 3** Select the saved BOM file.
- Step 4** The BOM information appears in the Excel spreadsheet (Figure 2-59).

Figure 2-59 BOM in Microsoft Excel Example

	A	B	C	D	E	F	G	H	I	J
1	Cisco Metro Planner v2.5.0(1)									
2	Customer Name:	none								
3	Design Name:	Sample design								
4	Last Price Alignment Date:	04-16-04 at 11:20:32 via CCO Update								
5										
6	Site 2									
7	Network Total Discount Price:	\$122,415.00								
8	Global Discount Percent:	0%								
9	com.cisco.onet.ndt.metroplanner.views.ViewsUI\$ToolBarButton[2,131,77x24,layout=javax.swing.OverlayLayout,alignmentX=0.0,alignmentY=0.5,border=javax.s									
10										
11		Shelf ID	Product ID	Quantity	Unit Price	Site Unit Discount	Discounted Total Cost			
12			15454-R4.6.DSWCD	1	\$1,995.00	0%	\$1,995.00			
13			SF15454-R4.6.D	2	\$0.00	0%	\$0.00			
14		Main Shelf	15454-SA-ANSI	1	\$2,700.00	0%	\$2,700.00			
15			15454-LC-LC-2=	2	\$90.00	0%	\$180.00			
16			15454-TCC2	2	\$4,500.00	0%	\$9,000.00			
17			15454-FTA3-T	1	\$720.00	0%	\$720.00			
18			15216-ATT-LC-10=	1	\$200.00	0%	\$200.00			
19			15454-OSC-CSM=	1	\$9,000.00	0%	\$9,000.00			
20			15454-AD-1C-58.1=	1	\$20,000.00	0%	\$20,000.00			
21			15454-10T-L1-58.1=	1	\$75,000.00	0%	\$75,000.00			
22			15454-BLANK	12	\$225.00	0%	\$2,700.00			
23		Air Ramp.#0	15454-AIR-RAMP=	1	\$120.00	0%	\$120.00			
24		Fiber Storage	15454-FBR-STRG=	1	\$800.00	0%	\$800.00			
25										
26										
27										

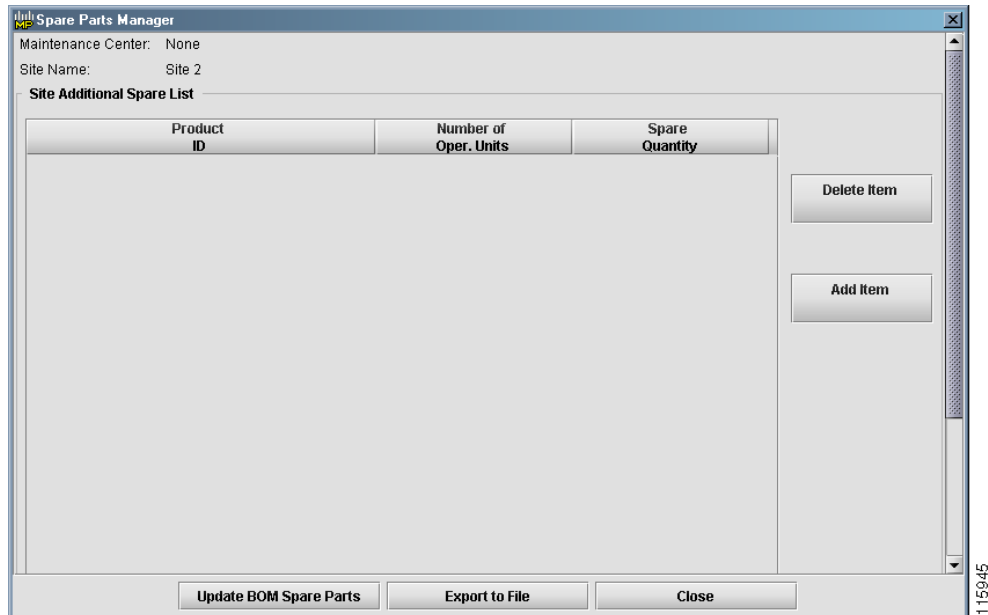
- Step 5** To improve the formatting, increase the column widths.

2.9.5 Managing Network Spare Parts

After you generate the BOM, use the Spare Parts Manager to determine the spare parts required by the network.

- Step 1** Select **Tools > Spares Management > Network Spare Parts**. The Spare Parts Manager window appears (Figure 2-60). To open the Spare Parts Manager window for a site, right-click the site and select **Manage Site Spare Part** from the shortcut menu.

Figure 2-60 Spare Parts Manager Window

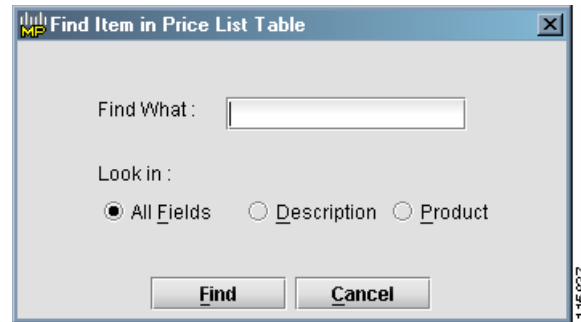


- Step 2** Click **Add Item** to add an item to the Network (Site) Additional Spare List area. An empty row appears in the area.
- Step 3** Click the new row. The Spare Parts Manager List Dialog window (Figure 2-61) appears.

Figure 2-61 Spare Parts Manager List Dialog Window



- Step 4** Select a product and click **OK**, or click **Search** to open the Find Item in Price List Table window (Figure 2-62).

Figure 2-62 Find Item in Price List Table Window

If you selected a product, it appears as a row in the Network (Site) Additional Spare List area. If you clicked search, complete the following substeps:

- a. Enter a search criteria in the Find What field.
- b. Select All Fields, Description, or Product from the Look In area.
- c. Click **Find**, or click **Cancel** to close the window without performing a search. The Spare Parts Manager List Dialog window appears, with the item highlighted.
- d. Select the product and click **OK**. The product appears as a row in the Network (Site) Additional Spare List area.

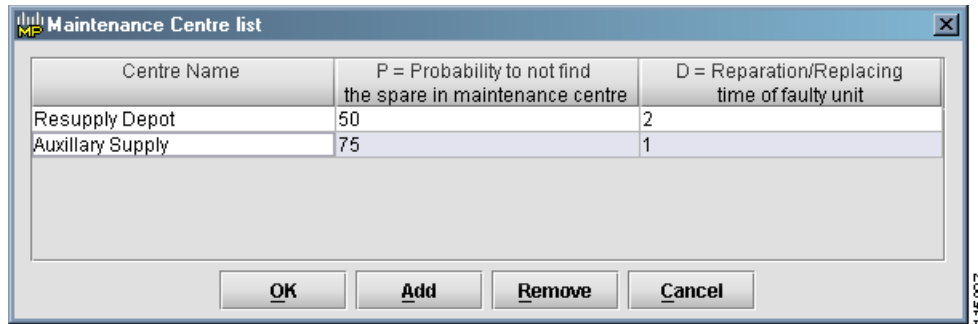
- Step 5** To delete the item, select the row and click **Delete Item**.
- Step 6** Click **Update BOM Spare Parts** to add the spare parts to the BOM. The BOM tab opens in the main window, displaying the spare parts in the lower portion of the tab.
- Step 7** Click **Export to File** to save the list of spare parts to an external HTML or text file.
- Step 8** Click **Close** to close the Spare Parts Manager window.
-

2.9.6 Establishing Maintenance Centers

You can identify maintenance centers that will supply your network with spare parts in the event of a failure. This feature helps your customer determine the quantity of spares that should be purchased, depending on their maintenance centers and their availability.

- Step 1** Select **Tools > Spares Management > Maintenance Center List**. The Maintenance Center List window appears ([Figure 2-63](#)).

Figure 2-63 Maintenance Centre List Window

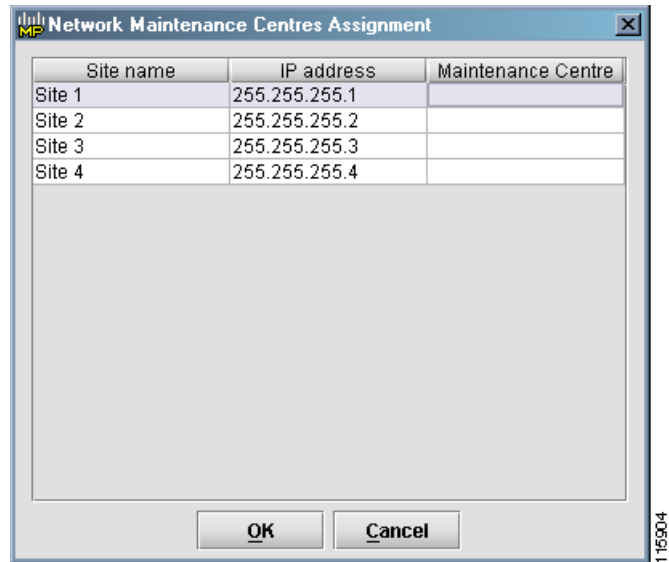


-
- Step 2** Click **Add** to add a maintenance center. A new row appears in the window.
- Step 3** Enter the center name in the Centre Name field.
- Step 4** Select the probability of finding the spare part in the selected maintenance center (represented by a percentage) from the Probability field. Probabilities are 50%, 75%, 95%, and 99%.
- Step 5** Enter the approximate time it takes to stock a maintenance center with a part (represented in months) in the Reparation/Replacing field.
- Step 6** To remove a maintenance center, select a center and click **Remove**.
- Step 7** Click **OK**.
-

2.9.7 Viewing Maintenance Center Assignments

After creating and assigning maintenance centers, you can use the Network Maintenance Centres Assignment window to view all the maintenance center assignments for each site in the network.

-
- Step 1** Select **Tools > Spares Management > Maintenance Center Assignment**. The Network Maintenance Centres Assignment window appears (Figure 2-64).

Figure 2-64 Network Maintenance Centres Assignment Window

The window displays the site name, IP address, and assigned maintenance center of each site.

- Step 2** To copy the information in the window, right-click any row and select **Copy Table**.
- Step 3** To export the information to an external file, right-click any row and select **Export Table**. A Save Table window appears, allowing you to enter or select a file name for the exported information. You can save maintenance center assignment files as either HTML or text files.
- Step 4** Click **Save**.
- Step 5** Click **OK** to close the Network Maintenance Centres Assignment window.

