



CHAPTER 13

Convert Network Configurations

This chapter explains how to convert from one SDH topology to another in a Cisco ONS 15454 SDH network. For initial network turn-up, see [Chapter 5, “Turn Up a Network.”](#)

Before You Begin

Before performing any of the following procedures, investigate all alarms and clear any trouble conditions. Refer to the *Cisco ONS 15454 SDH Troubleshooting Guide* as necessary.

This section lists the chapter procedures (NTPs). Turn to a procedure for applicable tasks (DLPs).

1. [NTP-D338 Convert a Point-to-Point to a Linear ADM Automatically, page 13-2](#)—Complete as needed.
2. [NTP-D154 Convert a Point-to-Point to a Linear ADM Manually, page 13-4](#)—Complete as needed if the in-service topology upgrade wizard is not available or you need to back out of the wizard.
3. [NTP-D318 Convert an Unprotected Point-to-Point or Linear ADM to a Two-Fiber MS-SPRing Automatically, page 13-6](#)—Complete as needed.
4. [NTP-D155 Convert a Point-to-Point or a Linear ADM to a Two-Fiber MS-SPRing Manually, page 13-8](#)—Complete as needed if the in-service topology upgrade wizard is not available or you need to back out of the wizard.
5. [NTP-D351 Convert a Point-to-Point or Linear ADM to an SNCP Automatically, page 13-10](#)—Complete as needed.
6. [NTP-D156 Convert a Point-to-Point or Linear ADM to an SNCP Manually, page 13-12](#)—Complete as needed if the in-service topology upgrade wizard is not available or you need to back out of the wizard.
7. [NTP-D320 Convert an SNCP to a Two-Fiber MS-SPRing Automatically, page 13-13](#)—Complete as needed.
8. [NTP-D210 Convert an SNCP to a Two-Fiber MS-SPRing Manually, page 13-15](#)—Complete as needed if the in-service topology upgrade wizard is not available or you need to back out of the wizard.
9. [NTP-D377 Convert an MS-SPRing to SNCP Manually, page 13-17](#)—Complete as needed.
10. [NTP-D211 Convert a Two-Fiber MS-SPRing to a Four-Fiber MS-SPRing Automatically, page 13-18](#)—Complete as needed.
11. [NTP-D159 Modify an MS-SPRing, page 13-20](#)—Complete as needed.

NTP-D338 Convert a Point-to-Point to a Linear ADM Automatically

Purpose	This procedure upgrades a point-to-point configuration (two nodes) to a linear add/drop multiplexer (ADM) configuration (three or more nodes) by adding a node to a 1+1 protection group without losing traffic.
Tools/Equipment	Compatible hardware Attenuators might be needed for some applications.
Prerequisite Procedures	The in-service topology upgrade procedure requires that the node to be added is reachable (has IP connectivity with Cisco Transport Controller [CTC]). Two technicians who can communicate with each other during the upgrade might be needed if the PC running CTC and the ONS 15454 SDH nodes are not at the same location.
Required/As Needed	As needed
Onsite/Remote	Onsite
Security Level	Provisioning or higher

**Note**

Optical transmit and receive levels should be in their acceptable range as shown in [Table 2-4 on page 2-17](#).

**Note**

If overhead circuits exist on the network, an in-service topology upgrade is service affecting. The overhead circuits will drop traffic and have a status of PARTIAL after the upgrade is complete.

- Step 1** Complete the “[DLP-D60 Log into CTC](#)” task on [page 17-44](#) at one of the two point-to-point nodes. If you are already logged in, continue with Step 2.
- Step 2** In network view, right-click the span between the two nodes where you want to add the new node. A dialog box appears.
- Step 3** Select **Upgrade Protection**. A drop-down list appears.
- Step 4** Select **Terminal to Linear**. The Upgrade Protection: Terminal to Linear page appear.
- Step 5** The Upgrade Protection: Terminal to Linear page lists the following conditions for adding a new node:
- The terminal network has no critical or major alarms.
 - The node that you will add has no critical or major alarms.
 - The node has compatible software version with that of the terminal nodes.
 - The node has four unused optical ports matching the speed of the 1+1 protection and no DCC has been provisioned on these four ports.
 - Fiber is available to connect the added node to the terminal nodes.

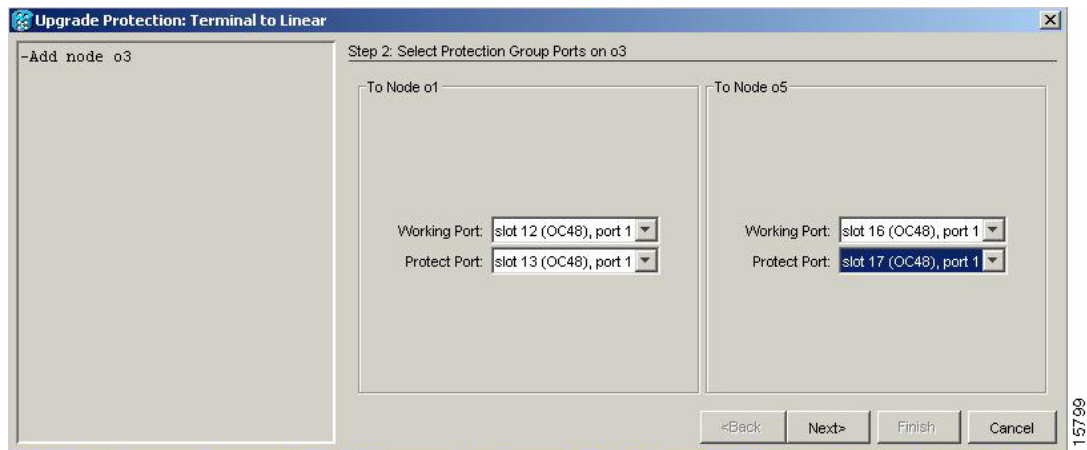
If all of these conditions are met and you wish to continue with the procedure, click **Next**.

**Note**

If you are attempting to add an unreachable node you must first log in to the unreachable node using a separate CTC session and configure that node. Delete any existing protection groups as described in the “DLP-D155 Delete a Protection Group” task on page 18-48. Delete any existing SDH DCC terminations as described in the “DLP-D360 Delete a Regenerator-Section DCC Termination” task on page 20-62.

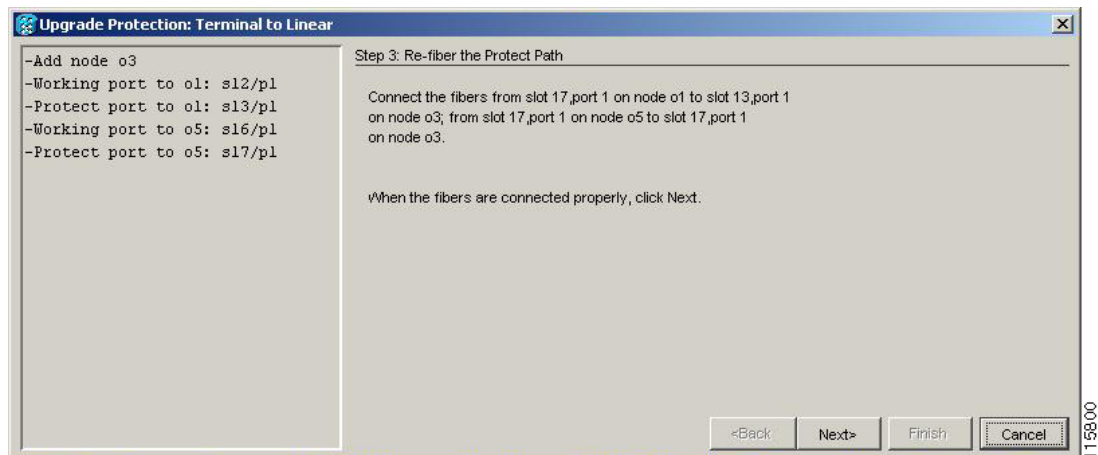
- Step 6** Enter the node host name or IP address or choose the name of the new node from the drop-down list. If you type in the name, make sure it is identical to the actual node name. The node name is case sensitive.
- Step 7** When you have the name of the node in the menu, click **Next**. The Select Protection Group Ports page appears (Figure 13-1).
- Step 8** From the drop-down lists, select the working and protect ports on the new node that you want to connect to each terminal node.

Figure 13-1 Selecting Protection Group Ports



- Step 9** Click **Next**. The Re-fiber the Protected Path dialog box appears (Figure 13-2).

Figure 13-2 Refibering the Protect Path



- Step 10** Follow the instructions on the page for connecting the fibers between the nodes.

Step 11 When the fibers are connected properly, click **Next**. The Update Circuit(s) on *Node-Name* page appears.



Note The Back button is not enabled in the wizard. You can click the **Cancel** button at this point and choose the **Yes** button if you want to cancel the upgrade protection procedure. If the procedure fails after you have physically moved the fiber-optic cables, you will need to restore the fiber-optic cables to the original positions and verify (through CTC) that traffic is on the working path of the nodes before restarting the process. To check traffic status go to node view, click the **Maintenance > Protection** tabs. In the Protection Groups area, click the 1+1 protection group. You can see the status of the traffic in the Selected Group area.

Step 12 Click **Next** on the Update Circuit(s) on *Node-Name* page to continue with the procedure.

Step 13 The Force Traffic to Protect Path page states that it is about to force the traffic from the working to protect path for the terminal nodes. When you are ready to proceed, click **Next**.

Step 14 Follow each step as instructed by the wizard as it guides you through the process of refibering the working path between nodes and forcing the traffic back to the working path.

Step 15 The Force Traffic to Working Path page states that it is about to force the traffic from the protect to working path for the terminal nodes. When you are ready to proceed, click **Next**.

Step 16 The Completed page appears. This page is the final one in the process. Click **Finish**.

Step 17 **Stop. You have completed this procedure.**

NTP-D154 Convert a Point-to-Point to a Linear ADM Manually

Purpose	This procedure upgrades a point-to-point configuration (two nodes) to a linear ADM configuration (three or more nodes) manually, that is, without using the in-service topology upgrade wizard. Use this procedure if the wizard is unavailable or you need to back out of the wizard.
Tools/Equipment	None
Prerequisite Procedures	NTP-D124 Provision a Point-to-Point Network, page 5-3
Required/As Needed	As needed
Onsite/Remote	Onsite
Security Level	Provisioning or higher



Caution

This procedure is service-affecting.



Note

Optical transmit and receive levels should be in their acceptable range as shown in [Table 2-4 on page 2-17](#).



Note In a point-to-point configuration, two STM-N cards are connected to two STM-N cards on a second node. The working STM-N ports have data communications channel (DCC) terminations, and the STM-N cards are in a 1+1 protection group.

- Step 1** Complete the “[DLP-D60 Log into CTC](#)” task on page 17-44 at one of the two point-to-point nodes. If you are already logged in, continue with Step 2.
- Step 2** Complete the “[DLP-D298 Check the Network for Alarms and Conditions](#)” task on page 19-89.
- Step 3** Log into the node that will be added to the point-to-point configuration (the new node).
- Step 4** Complete the “[NTP-D24 Verify Card Installation](#)” procedure on page 4-2 to ensure that the new node has two STM-N cards with the same rate as the point-to-point nodes.
- Step 5** Complete the “[NTP-D35 Verify Node Turn-Up](#)” procedure on page 5-2 for the new node.
- Step 6** Physically connect the fibers between the point-to-point node and the new node. The fiber connections should be connected working card to working card and protect card to protect card.
- Step 7** On the new node, create a 1+1 protection group for the STM-N cards that will connect to the point-to-point node. See the “[DLP-D73 Create a 1+1 Protection Group](#)” task on page 17-59.
- Step 8** Complete the “[DLP-D363 Provision Regenerator-Section DCC Terminations](#)” task on page 20-65 for the working STM-N cards in the new node that will connect to the linear ADM network. (Alternatively, if additional bandwidth is needed for CTC management, complete the “[DLP-D364 Provision Multiplex-Section DCC Terminations](#)” task on page 20-67.) Make sure to set the port administrative state in the Create RS-DCC Termination dialog box to **Unlocked**.



Note DCC failure alarms appear until you create DCC terminations in the point-to-point node.

- Step 9** Display the point-to-point node that will connect to the new node in CTC node view.
- Step 10** Complete the “[NTP-D24 Verify Card Installation](#)” procedure on page 4-2 to ensure that the point-to-point node has STM-N cards installed that can connect to the new node.
- Step 11** Create a 1+1 protection group for the STM-N cards in the point-to-point node that will connect to the new node. See the “[DLP-D73 Create a 1+1 Protection Group](#)” task on page 17-59 for instructions.
- Step 12** Create DCC terminations on the working STM-N card in the point-to-point node that will connect to the new node. See the “[DLP-D363 Provision Regenerator-Section DCC Terminations](#)” task on page 20-65. (Alternatively, if additional bandwidth is needed for CTC management, complete the “[DLP-D364 Provision Multiplex-Section DCC Terminations](#)” task on page 20-67.) In the Create RS-DCC Termination dialog box, set the port administrative state to **Unlocked**.
- Step 13** From the View menu, choose **Go to Node View** to display the new node in node view.
- Step 14** Complete the “[NTP-D28 Set Up Timing](#)” procedure on page 4-10 for the new node. If the new node is using line timing, set the working STM-N card as the timing source.
- Step 15** From the View menu, choose **Go to Network View** to display the network view to verify that the newly created linear ADM configuration is correct. One green span line should appear between each linear node.
- Step 16** Click the **Alarms** tab.
- a. Verify that the alarm filter is not on. See the “[DLP-D227 Disable Alarm Filtering](#)” task on page 19-26 as necessary.

- b. Verify that no unexplained alarms appear on the network. If alarms appear, investigate and resolve them before continuing. Refer to the *Cisco ONS 15454 SDH Troubleshooting Guide* for procedures.

Step 17 Repeat the procedure to add an additional node to the linear ADM.

Stop. You have completed this procedure.

NTP-D318 Convert an Unprotected Point-to-Point or Linear ADM to a Two-Fiber MS-SPRing Automatically

Purpose	This procedure converts an unprotected point-to-point or linear ADM to a two-fiber multiplex section-shared protection ring (MS-SPRing) without disrupting traffic.
Tools/Equipment	None
Prerequisite Procedures	NTP-D44 Provision SNCP Nodes, page 5-21
Required/As Needed	As needed
Onsite/Remote	Onsite or remote
Security Level	Provisioning or higher



Note

Before beginning this procedure, you should have a unique ring name to identify the new MS-SPRing and a unique node ID number for each node on the ring.



Note

Before beginning this procedure, optical transmit and receive levels should be in their acceptable range as shown in [Table 2-4 on page 2-17](#).



Note

If overhead circuits exist on the network, an in-service topology upgrade is service affecting. The overhead circuits will drop traffic and have a status of PARTIAL after the upgrade is complete.

- Step 1** Complete the “[DLP-D60 Log into CTC](#)” task on page 17-44 at a node on the point-to-point or linear ADM. If you are already logged in, continue with Step 2.
- Step 2** Complete the “[DLP-D298 Check the Network for Alarms and Conditions](#)” task on page 19-89.
- Step 3** Complete the “[DLP-D155 Delete a Protection Group](#)” task on page 18-48 at the nodes that support the point-to-point or linear ADM span.
- Step 4** Complete the “[DLP-D363 Provision Regenerator-Section DCC Terminations](#)” task on page 20-65 at the nodes that support the point-to-point or linear ADM span. (Alternatively, if additional bandwidth is needed for CTC management, complete the “[DLP-D364 Provision Multiplex-Section DCC Terminations](#)” task on page 20-67.) Provision the slot in each node that is not already in the RS-DCC Terminations list.
- Step 5** In the Tools menu, choose **Topology Upgrade > Convert SNCP to MS-SPRing**.
- Step 6** In the Topology Conversion dialog box, set the MS-SPRing properties:
- Ring Type—(Display only) The default is two-fiber.

- **Speed**—Choose the MS-SPRing ring speed: STM-1, STM-16, or STM-64. The speed must match the OC-N speed of the MS-SPRing trunk (span) cards.



Note If you are creating an STM-1 MS-SPRing and will eventually upgrade it to STM-16 or STM-64, use the single-port STM-1 cards (OC12 IR/STM4 SH 1310, OC12 LR/STM4 SH 1310, or OC12 LR/STM4 LH 1550).

- **Ring Name**—Assign a ring name. The name can be from 1 to 6 characters in length. Any alphanumeric string is permissible, and upper and lower case letters can be combined. Do not use the character string “All” in either upper or lower case letters. This is a TL1 keyword and will be rejected. Do not choose a name that is already assigned to another MS-SPRing.
- **Reversion time**—Set the amount of time that will pass before the traffic reverts to the original working path following a ring switch. The default is 5 minutes. Ring reversions can be set to Never.

Step 7 Click **Next**. If the network graphic appears, go to [Step 8](#).

If CTC determines that a MS-SPRing cannot be created, for example, not enough optical cards are installed or it finds circuits with subnetwork connection protection (SNCP) selectors, a “Cannot Create MS-SPRing” message appears. If this occurs, complete the following steps:

- Click **OK**.
- In the Create MS-SPRing window, click **Excluded Nodes**. Review the information explaining why the MS-SPRing could not be created, then click **OK**.
- Depending on the problem, click **Back** to start over or click **Cancel** to cancel the operation.
- Complete the “[NTP-D40 Provision MS-SPRing Nodes](#)” procedure on page 5-10, making sure all steps are completed accurately, then start this procedure again.

Step 8 In the network graphic, double-click a MS-SPRing span line. If the span line is DCC connected to other MS-SPRing cards that constitute a complete ring, the lines turn blue. If the lines do not form a complete ring, double-click span lines until a complete ring is formed. Click **Next**.

Step 9 The SNCP to MS-SPRing Topology Conversion dialog box appears. The dialog box states that the system is about to force traffic to the shortest SNCP paths. Click **Next** to continue.

Step 10 Another dialog box appears, stating that the force has been applied to the shortest SNCP path. Click **Finish**. If the MS-SPRing window appears with the MS-SPRing you created, go to [Step 11](#).

If a “Cannot Create MS-SPRing” or “Error While Creating MS-SPRing” message appears, complete the following:

- Click **OK**.
- In the Create MS-SPRing window, click **Excluded Nodes**. Review the information explaining why the MS-SPRing could not be created, then click **OK**.
- Depending on the problem, click **Back** to start over or click **Cancel** to cancel the operation.
- Complete the “[NTP-D40 Provision MS-SPRing Nodes](#)” procedure on page 5-10, making sure all steps are completed accurately, then start this procedure again.



Note Some or all of the following alarms may briefly appear during MS-SPRing setup: E-W MISMATCH, RING MISMATCH, APSCIMP, APSDFLTK, and MS-SPRingOSYNC.

Step 11 Verify the following:

- On the network map, a green span line appears between all MS-SPRing nodes.

- All E-W MISMATCH, RING MISMATCH, APSCIMP, DFLTK, and MS-SPRingOSYNC alarms are cleared.

Stop. You have completed this procedure.

NTP-D155 Convert a Point-to-Point or a Linear ADM to a Two-Fiber MS-SPRing Manually

Purpose	This procedure upgrades a point-to-point configuration (two nodes) or a linear ADM configuration (three or more nodes) to a two-fiber MS-SPRing manually, that is, without using the in-service topology upgrade wizard. Use this procedure if the wizard is unavailable or you need to back out of the wizard.
Tools/Equipment	None
Prerequisite Procedures	NTP-D124 Provision a Point-to-Point Network, page 5-3 or NTP-D38 Provision a Linear ADM Network, page 5-6
Required/As Needed	As needed
Onsite/Remote	Onsite
Security Level	Provisioning or higher



Caution

This procedure is service affecting.



Note

Optical transmit and receive levels should be in their acceptable range as shown in [Table 2-4 on page 2-17](#).

- Step 1** Complete the “[DLP-D60 Log into CTC](#)” task on [page 17-44](#) at one of the nodes that you want to convert from a point-to-point or linear ADM to an MS-SPRing. If you are already logged in, continue with Step 2.
- Step 2** According to local site practice, complete the “[NTP-D108 Back Up the Database](#)” procedure on [page 15-5](#) for each node in the configuration.
- Step 3** Check for alarms and conditions. See the “[DLP-D298 Check the Network for Alarms and Conditions](#)” task on [page 19-89](#) for instructions.
- Step 4** On the network map, right-click a span adjacent to the node you are logged into. A shortcut menu appears.
- Step 5** From the shortcut menu, click **Circuits**. The Circuits on Span window appears.
- Step 6** Verify that the total number of active VC4 circuits does not exceed 50 percent of the span bandwidth. In the Circuits column, there is a block titled “Unused.” This number should exceed 50 percent of the span bandwidth.

**Note**

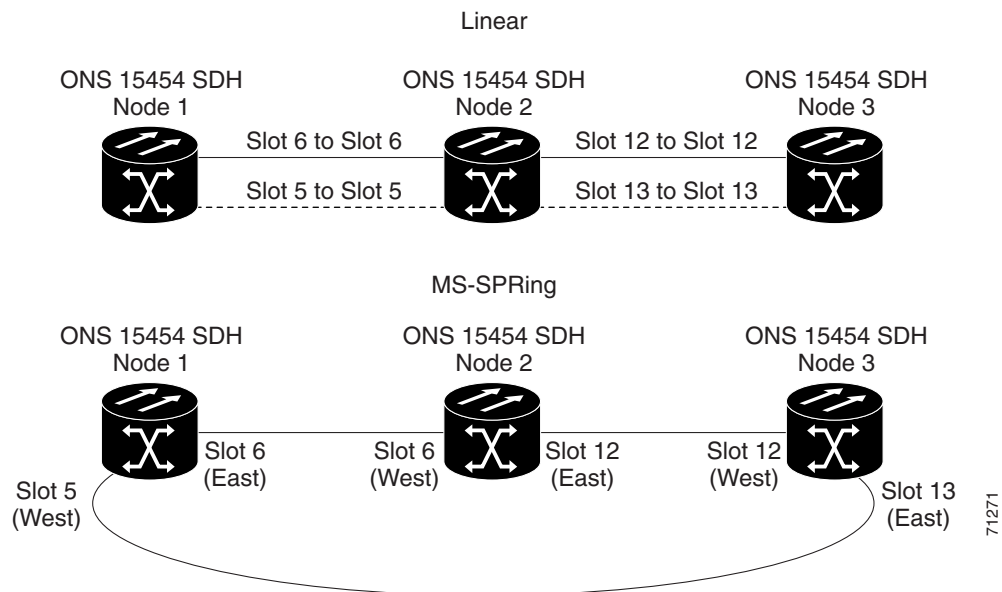
If the span is an STM-16, no more than 8 VC4s can be provisioned on the span. If the span is an STM-64, no more than 32 VC4s can be provisioned on the span. If the span is an STM-4, no more than 2 VC4s can be provisioned on the span.

**Caution**

If the first half of the capacity is exceeded, this procedure cannot be completed. Bandwidth must be 50 percent unassigned to convert to an MS-SPRing. Refer to local procedures for relocating circuits if these requirements are not met.

- Step 7** Repeat [Step 4](#) through [Step 6](#) for each node in the point-to-point or linear ADM that you will convert to MS-SPRing. When all nodes comply with [Step 6](#), continue with the next step.
- Step 8** For every node in the point-to-point or linear ADM network that you want to convert to an MS-SPRing, complete the following tasks:
- Complete the “[DLP-D189 Verify that a 1+1 Working Slot is Active](#)” task on [page 18-75](#) for every 1+1 protection group that supports a span in the point-to-point or linear ADM network.
 - Complete the “[DLP-D155 Delete a Protection Group](#)” task on [page 18-48](#) at each node that supports the point-to-point or linear ADM span.
 - Complete the “[DLP-D214 Change the Service State for a Port](#)” task on [page 19-11](#) to put the protect ports in the Unlocked-enabled service state at each node that supports the point-to-point or linear ADM span.
- Step 9** (Linear ADM only) Physically remove the protect fibers from all nodes in the linear ADM; for example, the fiber running from Node 2/Slot 13 to Node 3/Slot 13 can be removed ([Figure 13-3](#)).

Figure 13-3 Linear ADM to MS-SPRing Conversion



- Step 10** Create the ring by connecting the protect fiber from one end node to the protect port on the other end node. For example, the fiber between Node 1/Slot 5 and Node 2/Slot 5 can be rerouted to connect Node 1/Slot 5 to Node 3/Slot 13 ([Figure 13-3](#)).



Note If you need to remove any STM-N cards from the shelf, do so now. In this example, cards in Node 2/Slots 5 and 13 can be removed. See the [“NTP-D227 Remove and Replace a Card” procedure on page 2-21](#).

- Step 11** From network view, click the **Circuits** tabs and complete the [“DLP-D147 Export CTC Data” task on page 18-39](#) to save the circuit data to a file on your hard drive.
- Step 12** Complete the [“DLP-D363 Provision Regenerator-Section DCC Terminations” task on page 20-65](#) at the end nodes; provision the slot in each node that is not already in the RS-DCC Terminations list (in the [Figure 13-3](#) example, Port 1 of Node 1/Slot 5 and Port 1 of Node 3/Slot 13). (Alternatively, if additional bandwidth is needed for CTC management, complete the [“DLP-D364 Provision Multiplex-Section DCC Terminations” task on page 20-67](#).)
- Step 13** For circuits provisioned on a VC4 that is now part of the protection bandwidth (VC4s 3 to 4 for an STM-4 MS-SPRing, VC4s 9 to 16 for an STM-16 MS-SPRing, and VC4s 33 to 64 for an STM-64), delete and recreate each circuit:
- Complete the [“DLP-D27 Delete Circuits” task on page 17-21](#) for one circuit.
 - Create the circuit on VC4s 1 to 2 for an STM-4 MS-SPRing, 1 to 8 for an STM-16 MS-SPRing, or 1 to 32 for an STM-64 MS-SPRing on the fiber that served as the protect fiber in the linear ADM. See the [“NTP-D324 Create a Manually Routed High-Order Circuit” procedure on page 6-61](#) for instructions.
 - Repeat Steps [a](#) and [b](#) for each circuit residing on an MS-SPRing protect VC4.
- Step 14** Complete the [“NTP-D41 Create the MS-SPRing” procedure on page 5-12](#) to put the nodes into an MS-SPRing.

Stop. You have completed this procedure.

NTP-D351 Convert a Point-to-Point or Linear ADM to an SNCP Automatically

Purpose	This procedure upgrades a point-to-point or linear ADM to an SNCP without disrupting traffic. You can upgrade synchronous transport signal (STS), Virtual Tributary (VT), and VT tunnel circuits to SNCP. This option is a single circuit operation.
Tools/Equipment	None
Prerequisite Procedures	NTP-D124 Provision a Point-to-Point Network, page 5-3
Required/As Needed	As needed
Onsite/Remote	Onsite or remote
Security Level	Provisioning or higher



Note When upgrading VT tunnels, CTC does not convert the VT tunnel to SNCP, but instead creates a secondary tunnel for the alternate path. The result is two unprotected VT tunnels using alternate paths.

**Note**

If overhead circuits exist on the network, an in-service topology upgrade is service affecting. The overhead circuits will drop traffic and have a status of PARTIAL after the upgrade is complete.

-
- Step 1** Complete the “[DLP-D60 Log into CTC](#)” task on page 17-44 at a node on the point-to-point or linear ADM. If you are already logged in, continue with Step 2.
- Step 2** If the point-to-point or linear ADM is 1+1 protected, complete the “[DLP-D155 Delete a Protection Group](#)” task on page 18-48. If the point-to-point or linear ADM is unprotected, continue with Step 3.
- Step 3** Complete the “[DLP-D363 Provision Regenerator-Section DCC Terminations](#)” task on page 20-65 at the nodes that support the point-to-point or linear ADM span. (Alternatively, if additional bandwidth is needed for CTC management, complete the “[DLP-D364 Provision Multiplex-Section DCC Terminations](#)” task on page 20-67.) Provision the slot in each node that is not already in the RS-DCC Terminations list.
- Step 4** From network or node view, click the **Circuits** tab. Click the circuit you want to upgrade.
- Step 5** From the Tools menu, choose **Topology Upgrade > Convert Unprotected to SNCP**.
- Step 6** To set the SNCP parameters, complete the “[DLP-D218 Provision SNCP Ring Selectors During Circuit Creation](#)” task on page 19-18.

**Note**

When upgrading point-to-point or linear ADM circuits to an SNCP topology, a traffic hit of greater than 300 ms occurs if the “Provision working go & return on primary path” routing option is not checked in the Circuit Attributes pane.

- Step 7** Click **Next**.
- Step 8** Complete one of the following tasks:
- To route the new SNCP circuit automatically, complete the “[DLP-D471 Automatically Route an SNCP Circuit for a Topology Upgrade](#)” task on page 21-48.
 - To route the new SNCP circuit manually, complete the “[DLP-D470 Manually Route an SNCP Circuit for a Topology Upgrade](#)” task on page 21-47.

Stop. You have completed this procedure.

NTP-D156 Convert a Point-to-Point or Linear ADM to an SNCP Manually

Purpose	This procedure upgrades a point-to-point or linear ADM configuration to a SNCP ring manually, that is, without using the in-service topology upgrade wizard. Use this procedure if the wizard is unavailable or you need to back out of the wizard.
Tools/Equipment	None
Prerequisite Procedures	NTP-D124 Provision a Point-to-Point Network, page 5-3 or NTP-D38 Provision a Linear ADM Network, page 5-6
Required/As Needed	As needed
Onsite/Remote	Onsite or remote
Security Level	Provisioning or higher


Caution

This procedure is service affecting. All circuits are deleted and reprovisioned.

-
- Step 1** Complete the [“DLP-D60 Log into CTC” task on page 17-44](#) at a node on the point-to-point or linear ADM. If you are already logged in, continue with Step 2.
- Step 2** Complete the [“DLP-D298 Check the Network for Alarms and Conditions” task on page 19-89](#).
- Step 3** Complete the [“DLP-D189 Verify that a 1+1 Working Slot is Active” task on page 18-75](#) for each node.
- Step 4** Complete the [“DLP-D155 Delete a Protection Group” task on page 18-48](#) for each 1+1 protection group that supports the point-to-point or linear ADM span.
- Step 5** Complete the [“DLP-D363 Provision Regenerator-Section DCC Terminations” task on page 20-65](#) at the protect cards in all nodes that will be part of the SNCP ring. Alternatively, if additional bandwidth is needed for CTC management, complete the [“DLP-D364 Provision Multiplex-Section DCC Terminations” task on page 20-67](#).
- Step 6** Complete the [“DLP-D27 Delete Circuits” task on page 17-21](#) and the [“NTP-D323 Create an Automatically Routed High-Order Circuit” procedure on page 6-56](#) to delete and recreate the circuits one at a time.


Note

If you want to add additional nodes to the SNCP, see the [“NTP-D360 Add an SNCP Node” procedure on page 14-10](#).


Note

An SNCP is the default configuration if the cards installed are installed and the DCCs are configured.

Stop. You have completed this procedure.

NTP-D320 Convert an SNCP to a Two-Fiber MS-SPRing Automatically

Purpose	This procedure converts a SNCP to a two-fiber MS-SPRing without disrupting traffic.
Tools/Equipment	None
Prerequisite Procedures	NTP-D44 Provision SNCP Nodes, page 5-21
Required/As Needed	As needed
Onsite/Remote	Onsite or remote
Security Level	Provisioning or higher



Note Open-ended SNCP and SNCP dual-ring interconnect (DRI) configurations do not support in-service topology upgrades.



Note Before beginning this procedure, you should have a unique ring name to identify the new MS-SPRing and a unique node ID number for each node on the ring.



Note Before beginning this procedure, optical transmit and receive levels should be in their acceptable range as shown in [Table 2-4 on page 2-17](#).



Note If overhead circuits exist on the network, an in-service topology upgrade is service affecting. The overhead circuits will drop traffic and have a status of PARTIAL after the upgrade is complete.

- Step 1** Complete the “[DLP-D60 Log into CTC](#)” task on page 17-44 at a node on the SNCP. If you are already logged in, continue with Step 2.
- Step 2** Complete the “[DLP-D298 Check the Network for Alarms and Conditions](#)” task on page 19-89.
- Step 3** From the Tools menu, choose **Topology Upgrade > Convert SNCP to MS-SPRing**.
- Step 4** In the SNCP to MS-SPRing Topology Conversion dialog box, set the MS-SPRing properties:
- Ring Type—(Display only) The default is two-fiber.
 - Speed—Choose the MS-SPRing ring speed: **STM-1**, **STM-16**, or **STM-64**. The speed must match the OC-N speed of the MS-SPRing trunk (span) cards.



Note If you are creating an STM-1 MS-SPRing and will eventually upgrade it to STM-16 or STM-64, use the single-port STM-1 cards (OC12 IR/STM4 SH 1310, OC12 LR/STM4 SH 1310, or OC12 LR/STM4 LH 1550).

- Ring Name—Assign a ring name. The name can be from 1 to 6 characters in length. Any alphanumeric string is permissible, and upper and lower case letters can be combined. Do not use the character string “All” in either upper or lower case letters. This is a TL1 keyword and will be rejected. Do not choose a name that is already assigned to another MS-SPRing.

- Reversion time—Set the amount of time that will pass before the traffic reverts to the original working path following a ring switch. The default is 5 minutes. Ring reversions can be set to Never.

Step 5 Click **Next**. If the SNCP to MS-SPRing Topology Conversion dialog box with the network graphic appears, go to Step 6.

If CTC determines that a MS-SPRing cannot be created, for example, not enough optical cards are installed or it finds circuits with SNCP selectors, a “Cannot Create MS-SPRing” message appears. If this occurs, complete the following steps:

- Click **OK**.
- In the Create MS-SPRing window, click **Excluded Nodes**. Review the information explaining why the MS-SPRing could not be created, then click **OK**.
- Depending on the problem, click **Back** to start over or click **Cancel** to cancel the operation.
- Complete the “[NTP-D40 Provision MS-SPRing Nodes](#)” procedure on page 5-10, making sure all steps are completed accurately, then start this procedure again.

Step 6 In the network graphic, double-click a MS-SPRing span line. If the span line is DCC connected to other MS-SPRing cards that constitute a complete ring, the lines turn blue. If the lines do not form a complete ring, double-click span lines until a complete ring is formed. Click **Next**.

Step 7 The next SNCP to MS-SPRing Topology Conversion page appears. The page states that the system is about to force traffic to the shortest SNCP paths. Click **Next** to continue.

Step 8 Another page appears, stating that the force has been applied to the shortest SNCP path. Click **Finish**.

If the MS-SPRing window appears with the MS-SPRing you created, go to Step 9. If a “Cannot Create MS-SPRing” or “Error While Creating MS-SPRing” message appears, complete the following:

- Click **OK**.
- In the Create MS-SPRing window, click **Excluded Nodes**. Review the information explaining why the MS-SPRing could not be created, then click **OK**.
- Depending on the problem, click **Back** to start over or click **Cancel** to cancel the operation.
- Complete the “[NTP-D40 Provision MS-SPRing Nodes](#)” procedure on page 5-10, making sure all steps are completed accurately, then start this procedure again.



Note Some or all of the following alarms might briefly appear during MS-SPRing setup: E-W MISMATCH, RING MISMATCH, APSCIMP, APSDFLTK, and MS-SPRingOSYNC.

Step 9 Verify the following:

- On the network view graphic, a green span line appears between all MS-SPRing nodes.
- All E-W MISMATCH, RING MISMATCH, APSCIMP, DFLTK, and MS-SPRingOSYNC alarms are cleared. Refer to the *Cisco ONS 15454 SDH Troubleshooting Guide* for alarm troubleshooting.

Stop. You have completed this procedure.

NTP-D210 Convert an SNCP to a Two-Fiber MS-SPRing Manually

Purpose	This procedure converts an SNCP to an MS-SPRing manually, that is, without using the in-service topology upgrade wizard. Use this procedure if the wizard is unavailable or you need to back out of the wizard.
Tools/Equipment	None
Prerequisite Procedures	NTP-D44 Provision SNCP Nodes, page 5-21
Required/As Needed	As needed
Onsite/Remote	Onsite or remote
Security Level	Provisioning or higher

**Caution**

This procedure is service affecting. All circuits on the ring are deleted and reprovisioned.

**Caution**

Read through this procedure completely before beginning the conversion.

**Note**

Prior to beginning this procedure, you should have a unique ring ID name to identify the new MS-SPRing and a unique node ID number for each node on the ring.

**Note**

Prior to beginning this procedure, optical transmit and receive levels should be in their acceptable range as shown in [Table 2-4 on page 2-17](#).

- Step 1** Log into an ONS 15454 SDH on the network where you will begin the ring conversion. See the [“DLP-D60 Log into CTC” task on page 17-44](#). If you are already logged in, continue with Step 2.
- Step 2** Complete the [“DLP-D298 Check the Network for Alarms and Conditions” task on page 19-89](#).
- Step 3** On the network map, right-click a span adjacent to the node you are logged into. A shortcut menu appears.
- Step 4** From the shortcut menu, click **Circuits**. The Circuits on Span window appears.
- Step 5** Verify that the total number of active VC4 circuits does not exceed 50 percent of the span bandwidth. In the Circuits column, there is a block titled “Unused.” This number should exceed 50 percent of the span bandwidth.

**Note**

If the span is an STM-16, no more than 8 VC4s can be provisioned on the span. If the span is an STM-64, no more than 32 VC4s can be provisioned on the span. If the span is an STM-4, no more than 2 VC4s can be provisioned on the span.

**Caution**

If the first half of the capacity is exceeded, this procedure cannot be completed. Bandwidth must be 50 percent unassigned to convert to MS-SPRing. Refer to your site plan for relocating circuits if these requirements are not met.

Step 6 Repeat Steps 1 to 5 for each node in the SNCP that you will convert to an MS-SPRing. When all nodes comply with Step 5, continue with the next step.

Step 7 Save all circuit information:

- a. In network view, click the **Circuits** tab.
- b. Record the circuit information using one of the following options:
 - From the File menu, click **Print** to print the circuits table. See the “[DLP-D146 Print CTC Data](#)” task on page 18-37.
 - From the File menu, click **Export** and choose the data format: HTML, CSV (comma separated values), or TSV (tab separated values). Click **OK** and save the file in a temporary directory. See the “[DLP-D147 Export CTC Data](#)” task on page 18-39.

Step 8 Delete the circuits:

**Note**

This method uses the network view. To delete circuits one at a time from each node, see the “[DLP-D27 Delete Circuits](#)” task on page 17-21.

- a. In network view, click the **Circuits** tab. All circuits on the ring appear.
- b. With the **Ctrl** key pressed, click each circuit. Each line turns dark blue as it is selected.
- c. After all circuits have been selected, click **Delete**. Allow several minutes for processing; the actual length of time depends on the number of circuits in the network.

Step 9 Complete the “[NTP-D41 Create the MS-SPRing](#)” procedure on page 5-12 to create the MS-SPRing.

Step 10 To recreate the circuits, see [Chapter 6, “Create Circuits and Low-Order Tunnels.”](#) and choose the applicable procedure for the circuit type you want to enter.

**Note**

To add additional nodes to an MS-SPRing, see the “[NTP-D359 Add an MS-SPRing Node](#)” procedure on page 14-2.

Stop. You have completed this procedure.

NTP-D377 Convert an MS-SPRing to SNCP Manually

Purpose	This procedure converts an MS-SPRing to SNCP manually.
Tools/Equipment	None
Prerequisite Procedures	NTP-D40 Provision MS-SPRing Nodes, page 5-10
Required/As Needed	As needed
Onsite/Remote	Onsite or remote
Security Level	Provisioning or higher

**Note**

You cannot convert an MS-SPRing to SNCP automatically or by using the in-service topology upgrade wizard.

**Caution**

This procedure is service affecting. All circuits on the ring are deleted and reprovisioned.

**Caution**

Read through this procedure completely before beginning the conversion.

**Note**

Prior to beginning this procedure, you should have a unique ring ID name to identify the new SNCP and a unique node ID number for each node on the ring.

**Note**

Prior to beginning this procedure, optical transmit and receive levels should be in their acceptable range as shown in [Table 2-4 on page 2-17](#).

- Step 1** Log into an ONS 15454 SDH on the network where you will begin the ring conversion. See the [“DLP-D60 Log into CTC” task on page 17-44](#). If you are already logged in, continue with [Step 2](#).
- Step 2** Complete the [“DLP-D298 Check the Network for Alarms and Conditions” task on page 19-89](#).
- Step 3** Repeat [Steps 1](#) and [2](#) for each node in the MS-SPRing that you will convert to an SNCP.
- Step 4** Save all circuit information:
- In network view, click the **Circuits** tab.
 - Record the circuit information using one of the following options:
 - From the File menu, click **Print** to print the circuits table. See the [“DLP-D146 Print CTC Data” task on page 18-37](#).
 - From the File menu, click **Export** and choose the data format: HTML, CSV (comma separated values), or TSV (tab separated values). Click **OK** and save the file in a temporary directory. See the [“DLP-D147 Export CTC Data” task on page 18-39](#).
- Step 5** Convert the MS-SPRing:
- From the View menu, choose **Go to Network View**. Click the **Provisioning > MS-SPRing** tabs.

- b. With the **Ctrl** key pressed, select all the MS-SPRing that you want to convert and click **Delete**. In the confirmation dialog box that appears, click **Yes**.



Note If an error message is displayed, rectify the error and then delete the MS-SPRing. For more information, refer to *Cisco ONS 15454 SDH Troubleshooting Guide*.

- c. As needed, perform one of the following steps to upgrade the circuit to SNCP:
- Complete the [NTP-D351 Convert a Point-to-Point or Linear ADM to an SNCP Automatically, page 13-10](#).
 - Complete the [NTP-D156 Convert a Point-to-Point or Linear ADM to an SNCP Manually, page 13-12](#).

Step 6 In network view, verify the following:

- The Protection column in the **Circuits** tab displays SNCP.
- The Edit Circuit window displays working and alternate paths of nodes and spans in the circuit.

Stop. You have completed this procedure.

NTP-D211 Convert a Two-Fiber MS-SPRing to a Four-Fiber MS-SPRing Automatically

Purpose	This procedure upgrades a two-fiber MS-SPRing to a four-fiber MS-SPRing without disrupting traffic. The conversion will be easier if the same east and west configuration is used on all nodes being upgraded.
Tools/Equipment	None
Prerequisite Procedures	NTP-D41 Create the MS-SPRing, page 5-12
Required/As Needed	As needed
Onsite/Remote	Onsite
Security Level	Provisioning or higher



Note

Two-fiber STM-16 or STM-64 MS-SPRings can be converted to four-fiber MS-SPRings. To convert, you install two additional STM-16 or STM-64 cards at each two-fiber MS-SPRing node, then log into CTC and convert the MS-SPRing from two-fiber to four-fiber. The fibers that were divided into working and protect bandwidths for the two-fiber MS-SPRing are now fully allocated for working MS-SPRing traffic. A span upgrade can be performed prior to the two-fiber to four-fiber MS-SPRing conversion.



Note

MS-SPRing protection channel access (PCA) circuits, if present, will remain in their existing VC4s. Therefore, they will be located on the working path of the four-fiber MS-SPRing and will have full MS-SPRing protection. To route PCA circuits on protection channels in the four-fiber MS-SPRing, delete and recreate the circuits after the upgrade. For example, if you upgrade a two-fiber STM-16 MS-SPRing to four-fiber, PCA circuits on the protection VC4s (VCs 8 to 16) in the two-fiber MS-SPRing will remain in their existing VC4s, which are working VC4s in the four-fiber MS-SPRing.

Deleting and recreating the STM-16 PCA circuits moves the circuits to VC4s 1 to 7 in the protect bandwidth of the four-fiber MS-SPRing. To delete circuits, see the “[NTP-D288 Modify and Delete Overhead Circuits and Server Trails](#)” procedure on page 7-4. To create circuits, see Chapter 6, “[Create Circuits and Low-Order Tunnels](#).”

**Note**

Before beginning this procedure, optical transmit and receive levels should be in their acceptable range as shown in [Table 2-4 on page 2-17](#).

**Note**

If you use source and drop cards that are already carrying traffic to upgrade a two-fiber MS-SPRing to a four-fiber MS-SPRing, the APSC-IMP alarms will generate and remain outstanding.

- Step 1** Complete the “[DLP-D60 Log into CTC](#)” task on page 17-44 at one of the two-fiber nodes that you want to convert.
- Step 2** Complete the “[DLP-D298 Check the Network for Alarms and Conditions](#)” task on page 19-89.
- Step 3** Complete the “[NTP-D16 Install STM-N Cards and Connectors](#)” procedure on page 2-7 to install two STM-16 or STM-64 cards at each MS-SPRing node. You must install the same STM-N card rate as the two-fiber MS-SPRing.
- Step 4** Connect the fiber to the new cards. Use the same east-west connection scheme that was used to create the two-fiber connections. See the “[DLP-D338 Install Fiber-Optic Cables for MS-SPRing Configurations](#)” task on page 20-35.
- Step 5** Complete the “[DLP-D214 Change the Service State for a Port](#)” task on page 19-11 to put the ports in the Unlocked-enabled service state on each new STM-N card.
- Step 6** Test the new fiber connections using procedures standard for your site.
- Step 7** Convert the MS-SPRing:
- From the View menu, choose **Go to Network View**. Click the **Provisioning > MS-SPRing** tabs.
 - Choose the two-fiber MS-SPRing you want to convert, then click the **Upgrade to 4 Fiber** button.
 - In the Upgrade MS-SPRing dialog box, set the amount of time that will pass before the traffic reverts to the original working path after the condition that caused the switch has been resolved. The default is 5 minutes.
 - Click **Next**.
 - Assign the east and west protection ports:
 - West Protect—Select the west MS-SPRing port that will connect to the west protect fiber from the drop-down list.
 - East Protect—Select the east MS-SPRing port that will connect to the east protect fiber from the drop-down list.
 - Click **Finish**.
- Step 8** Click the **Alarms** tab.
- Verify that the alarm filter is not on. See the “[DLP-D227 Disable Alarm Filtering](#)” task on page 19-26 as necessary.
 - Verify that no unexplained alarms appear on the network. If alarms appear, investigate and resolve them before continuing. Refer to the *Cisco ONS 15454 SDH Troubleshooting Guide* for procedures.

- Step 9** Complete the “[NTP-D342 Four-Fiber MS-SPRing Acceptance Test](#)” procedure on page 5-15.
Stop. You have completed this procedure.
-

NTP-D159 Modify an MS-SPRing

Purpose	This procedure changes an MS-SPRing ring ID, node ID, or ring and span reversion times.
Tools/Equipment	None
Prerequisite Procedures	DLP-D468 Create a Two-Fiber MS-SPRing Using the MS-SPRing Wizard , page 21-44
Required/As Needed	As needed
Onsite/Remote	Onsite or remote
Security Level	Provisioning or higher

- Step 1** Complete the “[DLP-D60 Log into CTC](#)” task on page 17-44 at a node in the MS-SPRing that you want to modify. If you are already logged in, continue with Step 2.
- Step 2** Complete the “[DLP-D298 Check the Network for Alarms and Conditions](#)” task on page 19-89 for instructions.



Note Some or all of the following alarms appear during MS-SPRing setup: E-W MISMATCH, RING MISMATCH, APSCIMP, APSDFLTK, and MSSP-OSYNC. The alarms clear after you configure all the nodes in the MS-SPRing. For definitions of these alarms, see the *Cisco ONS 15454 SDH Troubleshooting Guide*.

- Step 3** To change the MS-SPRing ring name or the ring or span reversion times, complete the following steps. If you want to change a node ID, continue with [Step 4](#).
- Switch to network view and click the **Provisioning > MS-SPRing** tabs.
 - Click the MS-SPRing you want to modify and click **Edit**.
 - In the MS-SPRing window, change any of the following:
 - Ring Name—If needed, change the MS-SPRing ring name. The name can be from 1 to 6 characters in length. The alphanumeric character strings that can be used are 0 to 9 and A to Z. You can combine numbers and letters and use upper or lower case letters. Do not use the character string “All” in either upper or lower case letters because it is a TL1 keyword. Do not choose a name that is already assigned to another MS-SPRing.
 - Reversion time—If needed, change the amount of time that will pass before the traffic reverts to the original working path after a ring switch.
 - Span Reversion—(Four-fiber MS-SPRings only) If needed, change the amount of time that will pass before the traffic reverts to the original working path after a span switch.
 - Click **Apply**.
 - If you changed the ring name, the MS-SPRing window closes automatically. If you only changed a reversion time, close the window by choosing **Close** from the File menu.

Step 4 As needed complete the “[DLP-D24 Change an MS-SPRing Node ID](#)” task on page 17-19; otherwise, continue with [Step 5](#).

Step 5 In network view, verify the following:

- A green span line appears between all MS-SPRing nodes.
- All E-W MISMATCH, RING MISMATCH, APSCIMP, DFLTK, MSSP-OSYNC, and Node ID Mismatch alarms are cleared.



Note For definitions of these alarms, see the *Cisco ONS 15454 SDH Troubleshooting Guide*.

Stop. You have completed this procedure.
