



# Alarm Monitoring and Management

---

This chapter explains how to manage alarms with Cisco Transport Controller (CTC). To troubleshoot specific alarms, refer to the *Cisco ONS 15454 SDH Troubleshooting Guide*. Chapter topics include:

- [14.1 Overview, page 14-1](#)
- [14.2 LCD Alarm Counts, page 14-1](#)
- [14.3 Alarm Information, page 14-2](#)
- [14.4 Alarm Severities, page 14-10](#)
- [14.5 Alarm Profiles, page 14-10](#)
- [14.6 Alarm Suppression, page 14-14](#)
- [14.7 External Alarms and Controls, page 14-15](#)

## 14.1 Overview

CTC detects and reports SDH alarms generated by the Cisco ONS 15454 SDH and the larger SDH network. You can use CTC to monitor and manage alarms at the card, node, or network level. Default alarm severities conform to the ITU-T G.733 standard, but you can set alarm severities in customized alarm profiles or suppress CTC alarm reporting. For a detailed description of the standard ITU-T categories employed by Optical Networking System (ONS) nodes, refer to the *Cisco ONS 15454 SDH Troubleshooting Guide*.



**Note**

---

ONS 15454 SDH alarms can also be monitored and managed through a network management system (NMS).

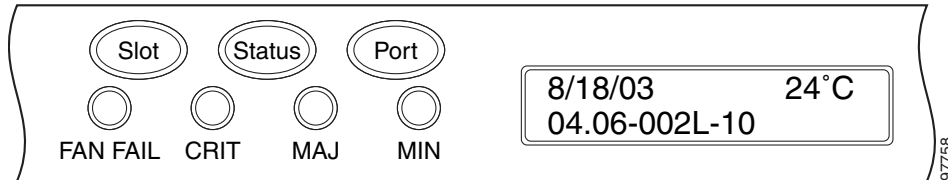
---

## 14.2 LCD Alarm Counts

You can view node, slot, or port-level alarm counts and summaries using the buttons on the ONS 15454 SDH LCD panel. The Slot and Port buttons toggle between display types; the Slot button toggles between node display and slot display, and the Port button toggles between slot and port views. Pressing the Status button after you choose the display mode changes the display from alarm count to alarm summary.

The ONS 15454 SDH has a one-button update for some commonly viewed alarm counts. If you press the Slot button once and then wait eight seconds, the display automatically changes from a slot alarm count to a slot alarm summary. If you press the Port button to toggle to port-level display, you can use the Port button to toggle to a specific slot and to view each port's port-level alarm count. [Figure 14-1](#) shows the LCD panel layout.

**Figure 14-1 Shelf LCD Panel**



## 14.3 Alarm Information

In the card, node, or network CTC view, click the Alarms tab to display the alarms for that card, node, or network. The Alarms window shows alarms in conformance with ITU-T G.733. This means that if a network problem causes two alarms, such as loss of frame (LOF) and loss of signal (LOS), CTC only shows the LOS alarm in this window because it supersedes LOF. (The LOF alarm can still be retrieved in the Conditions window.)

The Path Width column in the Alarms and Conditions tabs expands upon alarmed object information contained in the access identifier string (such as “VC4-6-1-6”) by giving the number of VC-4s contained in the alarmed path. For example, the Path Width will tell you whether a Critical alarm applies to a VC-4 (where the column will show 1) or a VC-12 (where the column will show 3). If the path contains a smaller circuit size than VC-4, the column is empty.

[Table 14-1](#) lists the column headings and the information recorded in each column.

**Table 14-1 Alarms Column Descriptions**

Column	Information Recorded
New	Indicates a new alarm. To change this status, click either the <b>Synchronize</b> button or the <b>Delete Cleared Alarms</b> button.
Date	Date and time of the alarm.
Node	Shows the name of the node where the condition or alarm occurred. (Visible in network view.).
Object	The object for an HPmon or LPmon alarm or condition.
Eqpt Type	Card type in this slot.
Shelf	For dense wavelength division multiplexing (DWDM) configurations, the shelf where the alarmed object is located. Visible in network view.
Slot	Slot where the alarm occurred (appears only in network and node view).
Port	Port where the alarm is raised. For HPterm and LPterm, the port refers to the upstream card it is partnered with.

**Table 14-1 Alarms Column Descriptions (continued)**

Column	Information Recorded
Path Width	Indicates how many VC-4s are contained in an alarmed path. (For any non-VC-4 object, such as a VC-3, the column is blank.) This information complements the alarm object notation, which is explained in <a href="#">Table 14-3</a> .
Sev	Severity level: CR (Critical), MJ (Major), MN (Minor), NA (Not Alarmed), NR (Not Reported).
ST	Status: R (raised), C (clear), T (transient).
SA	When checked, indicates a service-affecting alarm.
Cond	The error message/alarm name. These names are alphabetically defined in the “Alarm Troubleshooting” chapter of the <i>Cisco ONS 15454 SDH Troubleshooting Guide</i> .
Description	Description of the alarm.
Num	Num (number) is the quantity of alarm messages received, and is incremented automatically as alarms occur to display the current total of received error messages. (The column is hidden by default; to view it, right-click a column and choose <b>Show Column &gt; Num.</b> )
Ref	Ref (reference) is a unique identification number assigned to each alarm to reference a specific alarm message that is displayed. (The column is hidden by default; to view it, right-click a column and choose <b>Show Column &gt; Ref.</b> )

**Note**

When an entity is put in the Locked,maintenance administrative state, the ONS 15454 SDH suppresses all standing alarms on that entity. All alarms and events appear on the Conditions tab. You can change this behavior for the LPBKFACILITY and LPBKTERMINAL alarms. To display these alarms on the Alarms tab, set the NODE.general.ReportLoopbackConditionsOnPortsInLocked,Maintenance to TRUE on the NE Defaults tab.

[Table 14-2](#) lists the color codes for alarm and condition severities. The inherited (I) and unset (U) severities are only listed in the network view Provisioning > Alarm Profiles tab.

**Table 14-2 Color Codes for Alarm and Condition Severities**

Color	Description
Red	Raised Critical (CR) alarm
Orange	Raised Major (MJ) alarm
Yellow	Raised Minor (MN) alarm
Magenta (pink)	Raised Not Alarmed (NA) condition
Blue	Raised Not Reported (NR) condition
White	Cleared (C) alarm or condition

**Note**

Major and Minor alarms may appear yellow in CTC under certain circumstances. This is not due to a CTC problem but to a workstation memory and color utilization problem. For example, a workstation might run out of colors if many color-intensive applications are running. When using Netscape, you can limit the number of colors used by launching it from the command line with either the `-install` option or the `-ncols 32` option.

In network view, CTC identifies STM and VC alarm objects based upon the object IDs. [Table 14-3](#) lists the object numbering schemes for the MON (such as HPMon and LPMon) and TERM (such as HPterm and LPterm) objects.

**Table 14-3** Release 4.0 and Later Port-Based Alarm Numbering Scheme

STM and VC Alarm Numbering		
MON object	VC4-<slot>-<port>-<VC_within_port> For example, VC4-6-1-6	Port=1
TERM object	VC4-<slot>-<VC_within_slot> For example, VC4-6-6	Port=1

## 14.3.1 Viewing Alarms With Each Node's Time Zone

By default, alarms and conditions are displayed with the time stamp of the CTC workstation where you are viewing them. But you can set the node to report alarms (and conditions) using the time zone where the node is located by clicking `Edit > Preferences`, and clicking the `Display Events Using Each Node's Time Zone` check box.

## 14.3.2 Controlling Alarm Display

You can control the display of the alarms shown on the Alarms window. [Table 14-4](#) shows the actions you can perform in the Alarms window.

**Table 14-4** Alarm Display

Button/Check Box/Tool	Action
Filter button	Allows you to change the display on the Alarms window to show only alarms that meet a certain severity level, occur in a specified time frame, and/or reflect specific conditions. For example, you can set the filter so that only Critical alarms display on the window.  If you enable the Filter feature by clicking the Filter button in one CTC view, such as node view, it is enabled in the other views as well (card view and network view).
Synchronize button	Updates the alarm display. Although CTC displays alarms in real time, the Synchronize button allows you to verify the alarm display. This is particularly useful during provisioning or troubleshooting.
Delete Cleared Alarms button	Deletes, from the view, alarms that have been cleared.

**Table 14-4 Alarm Display (continued)**

Button/Check Box/Tool	Action
AutoDelete Cleared Alarms check box	If checked, CTC automatically deletes cleared alarms.
Filter tool	Enables or disables alarm filtering in the card, node, or network view. When enabled or disabled, this state applies to other views for that node and for all other nodes in the network. For example, if the Filter tool is enabled in the node (default login) view Alarms window, the network view Alarms window and card view Alarms window also have the tool enabled. All other nodes in the network also have the tool enabled.

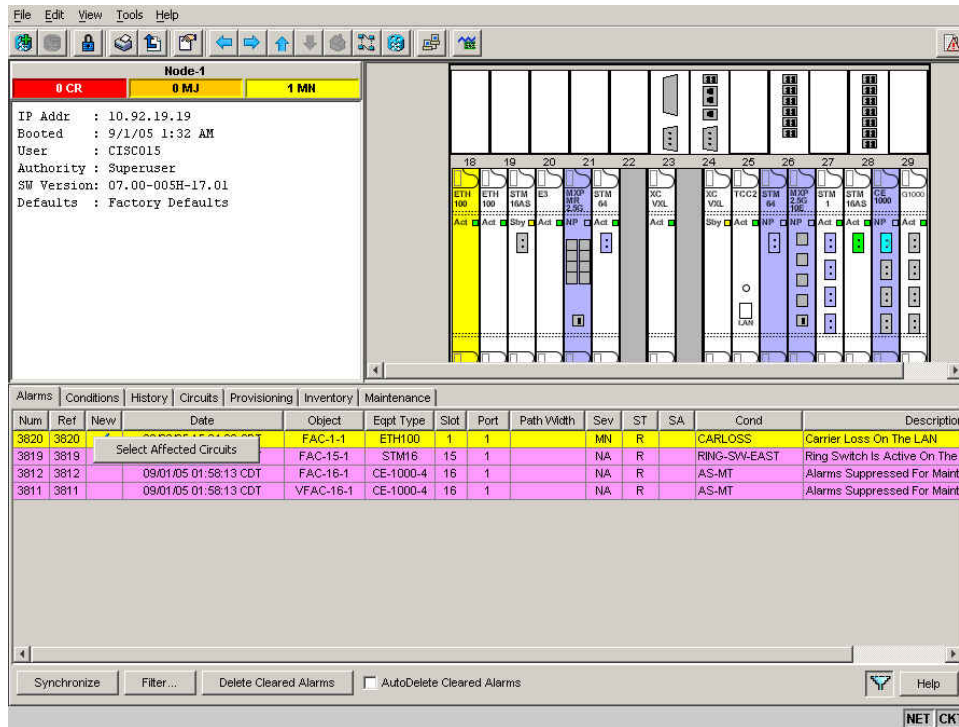
## 14.3.3 Filtering Alarms

The alarm display can be filtered to prevent display of alarms with certain severities or alarms that occurred between certain dates and times. You can set the filtering parameters by clicking the Filter button at the bottom-left of the Alarms window. You can turn the filter on or off by clicking the Filter tool at the bottom-right of the window. CTC retains your filter activation setting. For example, if you turn the filter on and then log out, CTC keeps the filter active the next time you log in.

## 14.3.4 Viewing Alarm-Affected Circuits

A user can view which ONS 15454 SDH circuits are affected by a specific alarm by positioning the cursor over the alarm in the Alarm window and right-clicking. A shortcut menu appears ([Figure 14-2](#)).

Figure 14-2 Select Affected Circuits Option



When the user selects the Select Affected Circuits option, the Circuits window opens to show the circuits that are affected by the alarm.

## 14.3.5 Conditions Tab

The Conditions window displays retrieved fault conditions. A condition is a fault or status detected by ONS 15454 SDH hardware or software. When a condition occurs and continues for a minimum period, CTC raises a condition, which is a flag showing that this particular condition currently exists on the ONS 15454 SDH.

The Conditions window shows all conditions that occur, including those that are superseded. For instance, if a network problem causes two alarms, such as LOF and LOS, CTC shows both the LOF and LOS conditions in this window (even though LOS supersedes LOF). Having all conditions visible can be helpful when troubleshooting the ONS 15454 SDH. If you want to retrieve conditions that obey a root-cause hierarchy (that is, LOS supersedes and replaces LOF), you can exclude the same root causes by checking “Exclude Same Root Cause” check box in the window.

Fault conditions include reported alarms and Not Reported or Not Alarmed conditions. Refer to the trouble notifications information in the *Cisco ONS 15454 SDH Troubleshooting Guide* for more information about alarm and condition classifications.

## 14.3.6 Controlling the Conditions Display

You can control the display of the conditions on the Conditions window. Table 14-5 shows the actions you can perform in the window.

**Table 14-5** Conditions Display

Button	Action
Retrieve	Retrieves the current set of all existing fault conditions, as maintained by the alarm manager, from the ONS 15454 SDH.
Filter	Allows you to change the Conditions window display to only show the conditions that meet a certain severity level or occur in a specified time. For example, you can set the filter so that only Critical conditions display on the window.  <b>Note</b> There is a Filter button on the lower-right of the window that allows you to enable or disable the filter feature.
Exclude Same Root Cause	Retrieves conditions that obey a root-cause hierarchy (for example, LOS supersedes and replaces LOF).

### 14.3.6.1 Retrieving and Displaying Conditions

The current set of all existing conditions maintained by the alarm manager can be seen when you click the Retrieve button. The set of conditions retrieved is relative to the view. For example, if you click the button while displaying the node view, node-specific conditions are displayed. If you click the button while displaying the network view, all conditions for the network (including ONS 15454 SDH nodes and other connected nodes) are displayed, and the card view shows only card-specific conditions.

You can also set a node to display conditions using the time zone where the node is located, rather than the time zone of the PC where they are being viewed. See the “[14.3.1 Viewing Alarms With Each Node’s Time Zone](#)” section on page 14-4 for more information.

### 14.3.6.2 Conditions Column Descriptions

Table 14-6 lists the Conditions window column headings and the information recorded in each column.

**Table 14-6** Conditions Column Description

Column	Information Recorded
New	Indicates a new condition.
Date	Date and time of the condition.
Node	Shows the name of the node where the condition or alarm occurred. (Visible in network view.)
Object	The object for an HPmon or LPmon.
Eqpt Type	Card type in this slot.
Shelf	For DWDM configurations, the shelf where the alarmed object is located. Visible in network view.
Slot	Slot where the condition occurred (appears only in network and node view).
Port	Port where the alarm is raised. For HPterm and LPterm, the port refers to the upstream card it is partnered with.
Path Width	Indicates how many VC-4s are contained in an alarmed path. (For any non-VC-4 object, such as a VC-3, the column is blank.) This information complements the alarm object notation, which is explained in <a href="#">Table 14-3</a> .

**Table 14-6** Conditions Column Description (continued)

Column	Information Recorded
Sev <sup>1</sup>	Severity level: CR (Critical), MJ (Major), MN (Minor), NA (Not Alarmed), NR (Not Reported).
SA <sup>1</sup>	Indicates a service-affecting alarm (when checked).
Cond	The error message/alarm name; these names are alphabetically defined in the “Alarm Troubleshooting” chapter of the <i>Cisco ONS 15454 SDH Troubleshooting Guide</i> .
Description	Description of the condition.

1. All alarms, their severities, and service-affecting statuses are also displayed in the Condition tab unless you choose to filter the alarm from the display using the Filter button.

### 14.3.6.3 Filtering Conditions

The condition display can be filtered to prevent display of conditions (including alarms) with certain severities or that occurred between certain dates. You can set the filtering parameters by clicking the Filter button at the bottom-left of the Conditions window. You can turn the filter on or off by clicking the Filter tool at the bottom-right of the window. CTC retains your filter activation setting. For example, if you turn the filter on and then log out, CTC keeps the filter active the next time you log in.

## 14.3.7 Viewing History

The History window displays historic alarm or condition data for the node or for your login session. You can choose to display only alarm history, only events, or both by checking check boxes in the History > Shelf window. You can view network-level alarm and condition history, such as for circuits, for all the nodes visible in network view. At the node level, you can see all port (facility), card, STS, and system-level history entries for that node. For example, protection-switching events or performance-monitoring threshold crossings appear here. If you double-click a card, you can view all port, card, and STS alarm or condition history that directly affects the card.



#### Note

In the Preference dialog General tab, the Maximum History Entries value only applies to the Session window.

Different views of CTC display the following kinds of history:

- The History > Session window is shown in network view, node view, and card view. It shows alarms and conditions that occurred during the current user CTC session.
- The History > Shelf window is only shown in node view. It shows the alarms and conditions that occurred on the node since CTC software was operated on the node.
- The History > Card window is only shown in card view. It shows the alarms and conditions that occurred on the card since CTC software was installed on the node.



#### Tip

Double-click an alarm in the History window to display the corresponding view. For example, double-clicking a card alarm takes you to card view. In network view, double-clicking a node alarm takes you to node view.



If you check the History window Alarms check box, you display the node history of alarms. If you check the Events check box, you display the node history of Not Alarmed and transient events (conditions). If you check both check boxes, you retrieve node history for both.

### 14.3.7.1 History Column Descriptions

Table 14-7 lists the History window column headings and the information recorded in each column.

**Table 14-7 History Column Description**

Column	Information Recorded
Date	Date and time of the condition.
Node	Shows the name of the node where the condition or alarm occurred. (Visible in network view.)
Object	Identifier for the condition object. For an LPMon or HPMon, the object.
Eqpt Type	Card type in this slot (only displays in network view and node view).
Shelf	For DWDM configurations, the shelf where the alarmed object is located. Visible in network view.
Slot	Slot where the condition occurred (only displays in network view and node view).
Port	Port where the alarm is raised. For HPterm and LPterm, the port refers to the upstream card it is partnered with.
Path Width	Indicates how many VC-4s are contained in an alarmed path. (For any non-VC-4 object, such as a VC-3, the column is blank.) This information complements the alarm object notation, which is explained in Table 14-3.
Sev	Severity level: Critical (CR), Major (MJ), Minor (MN), Not Alarmed (NA), Not Reported (NR).
ST	Status: raised (R), cleared (C), or transient (T).
SA	Indicates a service-affecting alarm (when checked).
Cond	Condition name.
Description	Description of the condition.
Num	An incrementing count of alarm or condition messages. (The column is hidden by default; to view it, right-click a column and choose <b>Show Column &gt; Num.</b> )
Ref	The reference number assigned to the alarm or condition. (The column is hidden by default; to view it, right-click a column and choose <b>Show Column &gt; Ref.</b> )

### 14.3.7.2 Retrieving and Displaying Alarm and Condition History

You can retrieve and view the history of alarms and conditions, as well as transients (passing notifications of processes as they occur) in the CTC history window. The information in this window is specific to the view where it is shown (that is, network history in the network view, node history in the node view, and card history in the card view).

The node and card history views are each divided into two tabs. In node view, when you click the Retrieve button, you can see the history of alarms, conditions, and transients that have occurred on the node in the History > Shelf window, and the history of alarms, conditions, and transients that have occurred on the node during your login session in the History > Session window. In the card-view history window, after you retrieve the card history, you can see the history of alarms, conditions, and transients

on the card in the History > Card window, or a history of alarms, conditions, and transients that have occurred during your login session in the History > Session window. You can also filter the severities and occurrence period in these history windows.

## 14.3.8 Alarm History and Log Buffer Capacities

The ONS 15454 SDH alarm history log, stored in the TCC2/TCC2P RSA memory, contains four categories of alarms. These include:

- CR severity alarms
- MJ severity alarms
- MN severity alarms
- the combined group of cleared, Not Alarmed severity, and Not Reported severity alarms

Each category can store between 4 and 640 alarm chunks, or entries. In each category, when the upper limit is reached, the oldest entry in the category is deleted. The capacity is not user-provisionable.

CTC also has a log buffer, separate from the alarm history log, that pertains to the total number of entries displayed in the Alarms, Conditions, and History windows. The total capacity is provisionable up to 5,000 entries. When the upper limit is reached, the oldest entries are deleted.

## 14.4 Alarm Severities

ONS 15454 SDH alarm severities follow the ITU-T G.733 standard, so a condition might be Alarmed (at a severity of Critical [CR], Major [MJ], or Minor [MN]), Not Alarmed (NA) or Not Reported (NR). These severities are reported in the CTC software Alarms, Conditions, and History windows at all levels: network, shelf, and card.

ONS equipment provides a standard profile named Default listing all alarms and conditions with severity settings based on ITU-T G.733 and other standards, but users can create their own profiles with different settings for some or all conditions and apply these wherever desired. (See the [“14.5 Alarm Profiles” section on page 14-10.](#)) For example, in a custom alarm profile, the default severity of a carrier loss (CARLOSS) alarm on an Ethernet port could be changed from Major to Critical. The profile allows setting to Not Reported or Not Alarmed, as well as the three alarmed severities.

Critical and Major severities are only used for service-affecting alarms. If a condition is set as Critical or Major by profile, it will raise as a Minor alarm in the following situations:

- In a protection group, if the alarm is on a standby entity (side not carrying traffic)
- If the alarmed entity has no traffic provisioned on it, so no service is lost

Because of this possibility of being raised at two different levels, the alarm profile pane shows Critical as CR / MN and Major as MJ / MN.

## 14.5 Alarm Profiles

The alarm profiles feature allows you to change default alarm severities by creating unique alarm profiles for individual ONS 15454 SDH ports, cards, or nodes. A created alarm profile can be applied to any node on the network. Alarm profiles can be saved to a file and imported elsewhere in the network, but the profile must be stored locally on a node before it can be applied to the node, its cards, or its cards' ports.

CTC can store up to ten active alarm profiles at any time to apply to the node. Custom profiles can take eight of these active profile positions. Two other profiles, Default profile and Inherited profile, are reserved by the NE, and cannot be edited. The reserved Default profile contains ITU-T G.733 severities. The reserved Inherited profile allows port alarm severities to be governed by the card-level severities, or card alarm severities to be determined by the node-level severities.

If one or more alarm profiles have been stored as files from elsewhere in the network onto the local PC or server hard drive where CTC resides, you can utilize as many profiles as you can physically store by deleting and replacing them locally in CTC so that only eight are active at any given time.

## 14.5.1 Creating and Modifying Alarm Profiles

Alarm profiles are created in the network view using the Provisioning > Alarm Profiles tabs. A default alarm profile following ITU-T G.733 is preprovisioned for every alarm. After loading the default profile or another profile on the node, you can use the Clone feature to create custom profiles. After the new profile is created, the Alarm Profiles window shows the original profile—frequently Default—and the new profile. The Default alarm profile list contains alarm and condition severities that correspond when applicable to default values established in ITU-T G.733. Up to ten profiles, including the two reserved profiles (Inherited and Default) can be stored in CTC.

**Note**

The alarm profile list contains a master list of alarms that is used for a mixed node network. Some of these alarms might not be used in all ONS nodes.

**Note**

All default or user-defined severity settings that are Critical (CR) or Major (MJ) are demoted to Minor (MN) in non-service-affecting situations.

**Tip**

To see the full list of profiles including those available for loading or cloning, click the Available button. You must load a profile before you can clone it.

Wherever it is applied, the Default alarm profile sets severities to standard ITU-T G.733 settings. The Inherited profile sets alarm severity to inherited (I) so that alarms inherit, or copy, severities from the next-highest level. For example, a card with an Inherited alarm profile copies the severities used by the node housing the card. If you choose the Inherited profile from the network view, the severities at the lower levels (node and card) be copied from this selection.

You do not have to apply a single severity profile to the node-, card-, and port-level alarms. Different profiles can be applied at different levels. You could use the inherited or default profile on a node and on all cards and ports, but apply a custom profile that downgrades an alarm on one particular card. For example, you might choose to downgrade an STM-N unequipped path alarm (HP-UNEQ) from Critical (CR) to Not Alarmed (NA) on an optical card because this alarm raises and then clears every time you create a circuit. HP-UNEQ alarms for the card with the custom profile would not display on the Alarms tab. (But they would still be recorded in the Conditions and History tabs.)

When you modify severities in an alarm profile, the following rules apply:

- All Critical (CR) or Major (MJ) default or user-defined severity settings are demoted to Minor (MN) in Non-Service-Affecting (NSA) situations.
- Default severities are used for all alarms and conditions until you create a new profile and apply it.

## 14.5.2 Alarm Profile Buttons

The Alarm Profiles window displays six buttons at the bottom. [Table 14-8](#) lists and describes each of the alarm profile buttons and their functions.

**Table 14-8 Alarm Profile Buttons**

Button	Description
New	Adds a new alarm profile.
Load	Loads a profile to a node or a file.
Store	Saves profiles on a node (or nodes) or in a file.
Delete	Deletes profiles from a node.
Compare	Displays differences between alarm profiles (for example, individual alarms that are not configured equivalently between profiles).
Available	Displays all profiles available on each node.
Usage	Displays all entities (nodes and alarm subjects) present in the network and which profiles contain the alarm. Can be printed.

## 14.5.3 Alarm Profile Editing

[Table 14-9](#) lists and describes the five profile-editing options available when you right-click an alarm item in the profile column.

**Table 14-9 Alarm Profile Editing Options**

Button	Description
Store	Saves a profile in a node or in a file.
Rename	Changes a profile name.
Clone	Creates a profile that contains the same alarm severity settings as the profile being cloned.
Reset	Restores a profile to its previous state or to the original state (if it has not yet been applied).
Remove	Removes a profile from the table editor.

## 14.5.4 Alarm Severity Options

To change or assign alarm severity, left-click the alarm severity you want to change in the alarm profile column. Seven severity levels appear for the alarm:

- Not Reported (NR)
- Not Alarmed (NA)
- Minor (MN)
- Major (MJ)
- Critical (CR)

- Use Default
- Transient (T)

Transient and Use Default severity alarms only appear in alarm profiles. They do not appear when you view alarms, history, or conditions.

## 14.5.5 Row Display Options

In the network view, the Alarm Profiles window displays the following check boxes at the bottom of the window:

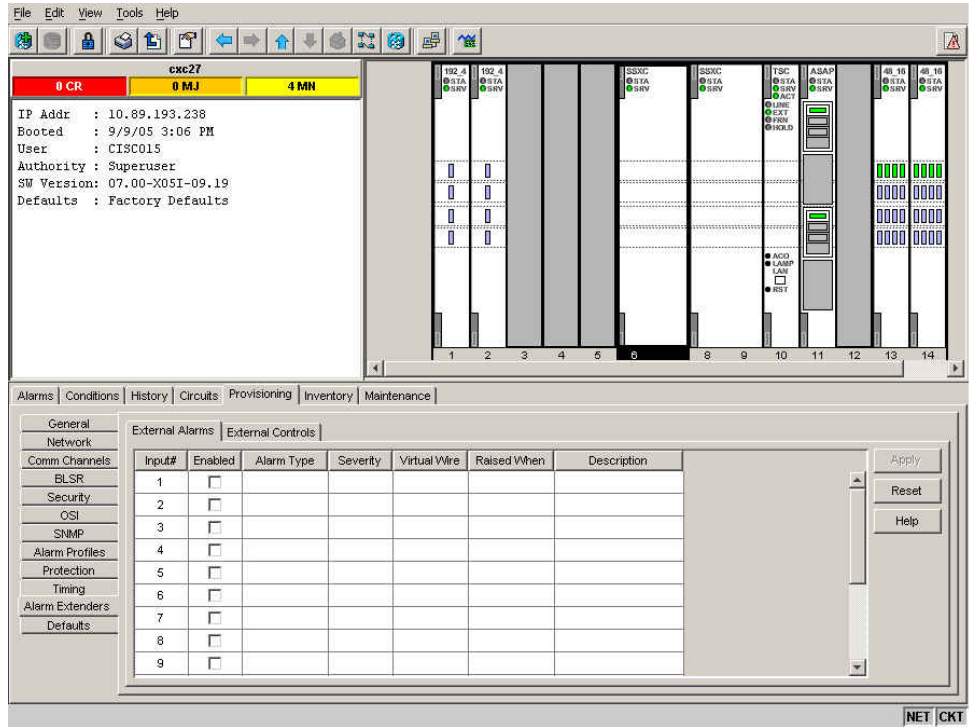
- Only show service-affecting severities—If unchecked, the editor shows severities in the format <sev1>/<sev2> where <sev1> is a service-affecting severity and <sev2> is not service-affecting. If checked, the editor only shows <sev1> alarms.
- Hide reference values—Highlights alarms with non-default severities by clearing alarm cells with default severities. This check-box is normally greyed out. It becomes active only when more than one profile is listed in the Alarm Profile Editor window. (The check box text changes to “Hide Values matching profile Default” in this case.)
- Hide identical rows—Hides rows of alarms that contain the same severity for each profile.

## 14.5.6 Applying Alarm Profiles

In CTC node view, the Alarm Behavior window displays alarm profiles for the node. In card view, the Alarm Behavior window displays the alarm profiles for the selected card. Alarm profiles form a hierarchy. A node-level alarm profile applies to all cards in the node except cards that have their own profiles. A card-level alarm profile applies to all ports on the card except ports that have their own profiles.

At the node level, you can apply profile changes on a card-by-card basis or set a profile for the entire node. At the card-level view, you can apply profile changes on a port-by-port basis or set alarm profiles for all ports on that card. [Figure 14-3](#) shows the alarm profiles for an eight-port STM-1 card.

Figure 14-3 Alarm Profile for an STM-1 Card



## 14.6 Alarm Suppression

The following sections explain alarm suppression features for the ONS 15454 SDH.

### 14.6.1 Alarms Suppressed for Maintenance

When you place a port in Locked,maintenance administrative state, this raises the alarm suppressed for maintenance (AS-MT) alarm in the Conditions and History windows<sup>1</sup> and causes subsequently raised alarms for that port to be suppressed.

While the facility is in the Locked,maintenance state, any alarms or conditions that are raised and suppressed on it (for example, a transmit failure [TRMT] alarm) are reported in the Conditions window and show their normal severity in the Sev column. The suppressed alarms are not shown in the Alarms and History windows. (These windows only show AS-MT). When you place the port back into Unlocked,automaticInService administrative state, the AS-MT alarm is resolved in all three windows. Suppressed alarms remain raised in the Conditions window until they are cleared.

1. AS-MT can be seen in the Alarms window as well if you have set the Filter dialog box to show NA severity events.

## 14.6.2 Alarms Suppressed by User Command

In the Provisioning > Alarm Profiles > Alarm Behavior tabs, the ONS 15454 SDH has an alarm suppression option that clears raised alarm messages for the node, chassis, one or more slots (cards), or one or more ports. Using this option raises the alarms suppressed by user command, or AS-CMD alarm. The AS-CMD alarm, like the AS-MT alarm, appears in the Conditions, and History<sup>1</sup> windows. Suppressed conditions (including alarms) appear only in the Conditions window--showing their normal severity in the Sev column. When the Suppress Alarms check box is unchecked, the AS-CMD alarm is cleared from all three windows.

A suppression command applied at a higher level does not supersede a command applied at a lower level. For example, applying a node-level alarm suppression command makes all raised alarms for the node appear to be cleared, but it does not cancel out card-level or port-level suppression. Each of these conditions can exist independently and must be cleared independently.

**Caution**

Use alarm suppression with caution. If multiple CTC or TL1 sessions are open, suppressing the alarms in one session suppresses the alarms in all other open sessions.

## 14.7 External Alarms and Controls

External alarm inputs can be provisioned on the Alarm Interface Controller-International (AIC-I) card for external sensors such as an open door and flood sensors, temperature sensors, and other environmental conditions. External control outputs on this card allow you to drive external visual or audible devices such as bells and lights. They can control other devices such as generators, heaters, and fans.

You provision external alarms in the AIC-I card view Provisioning > Card > External Alarms tab. Provision controls in the AIC-I card view Provisioning > Card > External Controls tab. Up to 16 external alarm inputs and 4 external controls are available with the AIC-I card.

### 14.7.1 External Alarm Input

You can provision each alarm input separately. Provisionable characteristics of external alarm inputs include:

- Alarm type, from a list of possibilities in a drop-down list
- Alarm severity (CR, MJ, MN, NA, and NR)
- Alarm-trigger setting (open or closed): Open means that the normal condition is no current flowing through the contact, and the alarm is generated when current does flow; closed means that normal condition is to have current flowing through the contact, and the alarm is generated with current stops flowing.
- Virtual wire associated with the alarm
- CTC alarm log description (up to 63 characters)

**Note**

If you provision an external alarm to raise when a contact is open, and you have not attached the alarm cable, the alarm will remain raised until the alarm cable is connected.

**Note**

---

When you provision an external alarm, the alarm object is ENV-IN-*nn*. The variable *nn* refers to the external alarm's number, regardless of the name you assign.

---

## 14.7.2 External Control Output

You can provision each alarm output separately. Provisionable characteristics of alarm outputs include:

- Control type
- Trigger type (alarm or virtual wire)
- Description for CTC display
- Closure setting (manually or by trigger). If you provision the output closure to be triggered, the following characteristics can be used as triggers:
  - Local NE alarm severity—A chosen alarm severity (for example, Major) and any higher-severity alarm (in this case, Critical) causes output closure.
  - Remote NE alarm severity—Similar to local NE alarm severity trigger setting, but applies to remote alarms.
  - Virtual wire entities—You can provision an alarm that is input to a virtual wire to trigger an external control output.